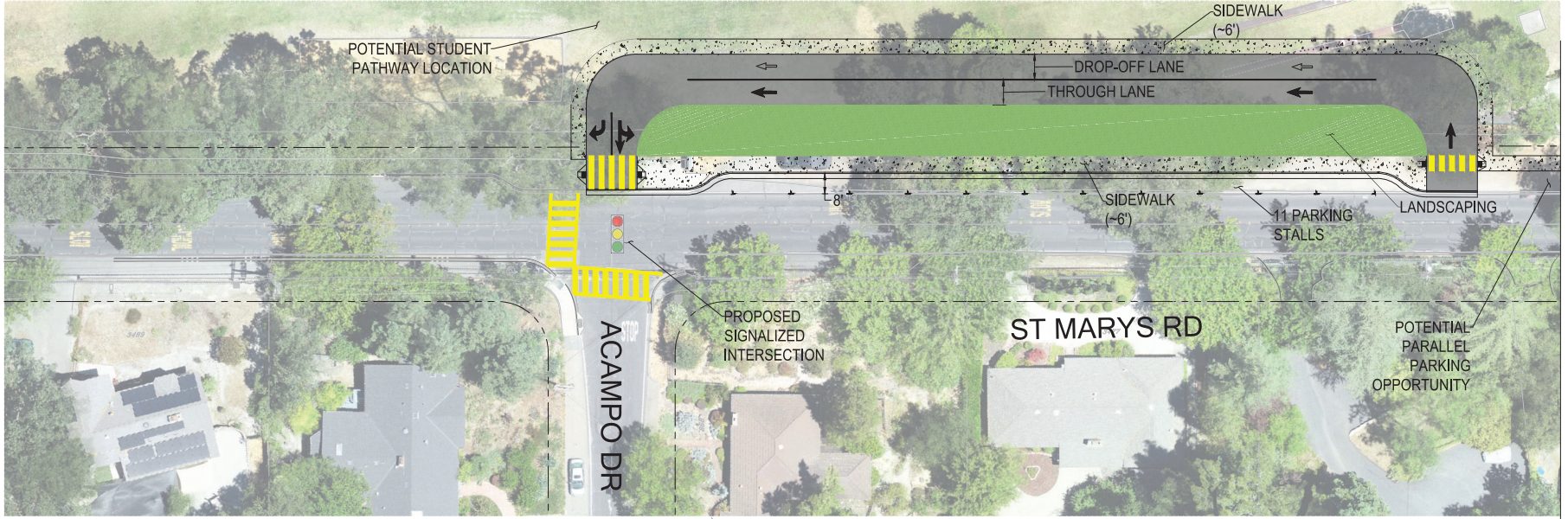
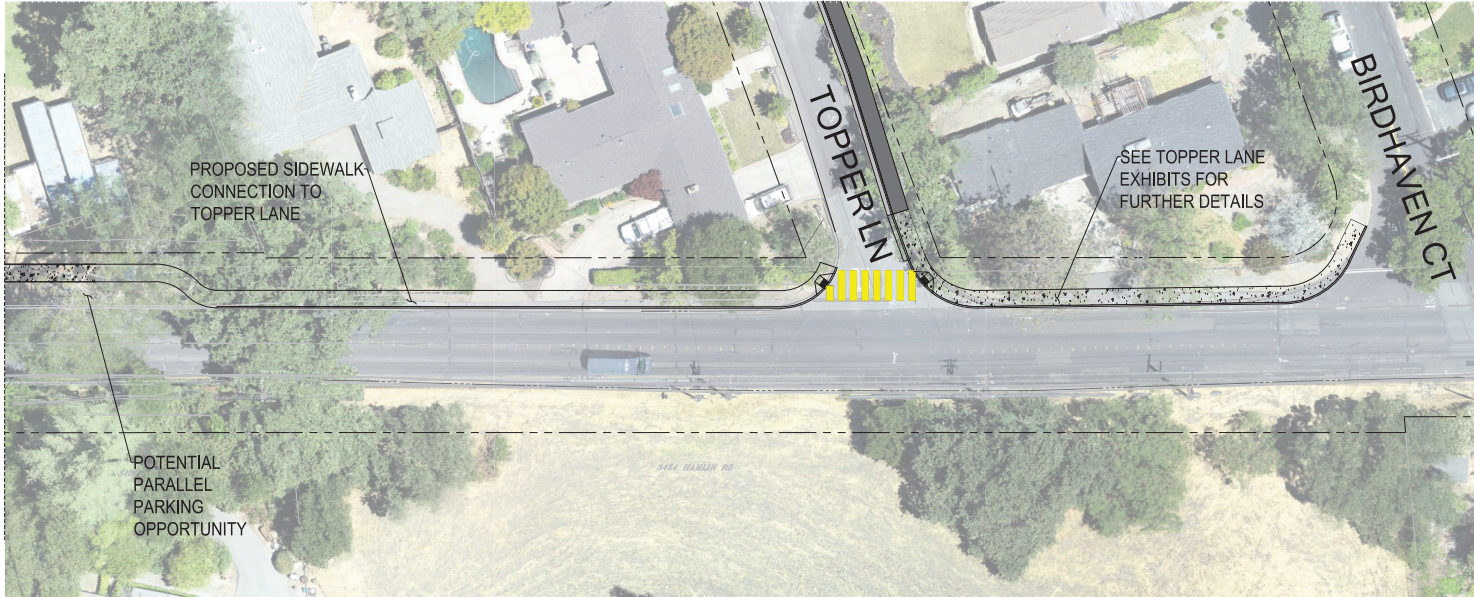


Attachment G: St. Mary's Drop-Off Concept Boards

NO PART OF THIS DOCUMENT MAY BE REPRODUCED OR TRANSMITTED IN ANY FORM INCLUDING PHOTOCOPYING, RECORDING OR ANY INFORMATION RETRIEVABLE AND STORAGE SYSTEM, WITHOUT PERMISSION IN WRITING FROM SANDIS.



MATCHLINE - SEE BELOW



MATCHLINE - SEE ABOVE

ON-STREET PARKING COMPARISON ST MARYS ROAD, TOPPER LANE TO AVALON AVE				
	UNSTRIPED DIAGONAL PARKING	UNSTRIPED PARALLEL PARKING	STRIPED PARKING	TOTAL PARKING
EXISTING	30	6	0	36
CONCEPT A	0	9	11	20

THE TABLE ABOVE DOES NOT INCLUDE PARKING WITHIN THE DROP-OFF LANE DURING NON-PEAK HOURS, WHICH IS BEING CONSIDERED. IF IMPLEMENTED, THIS WOULD ADD APPROXIMATELY 12 UNMARKED PARKING STALLS.



BUILD ON.
SANDIS.NET

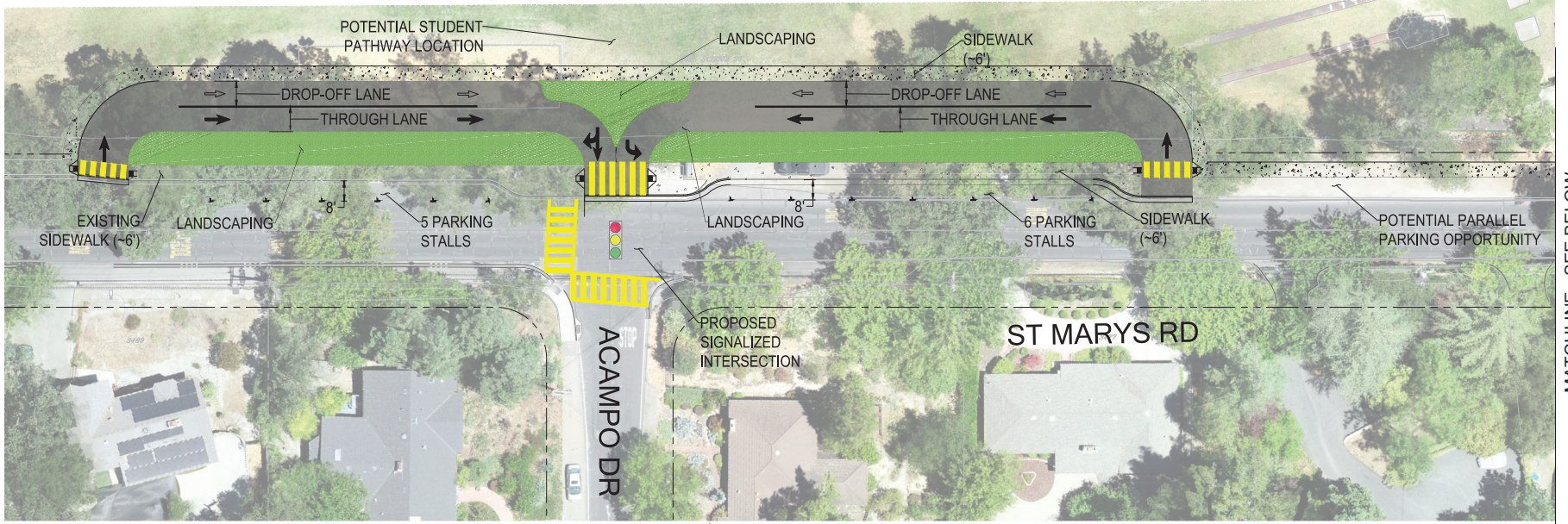
DATE: 2023-11-15
SCALE: 1" = 20'
PROJECT No.: 623048

No.	REVISION	DATE	BY

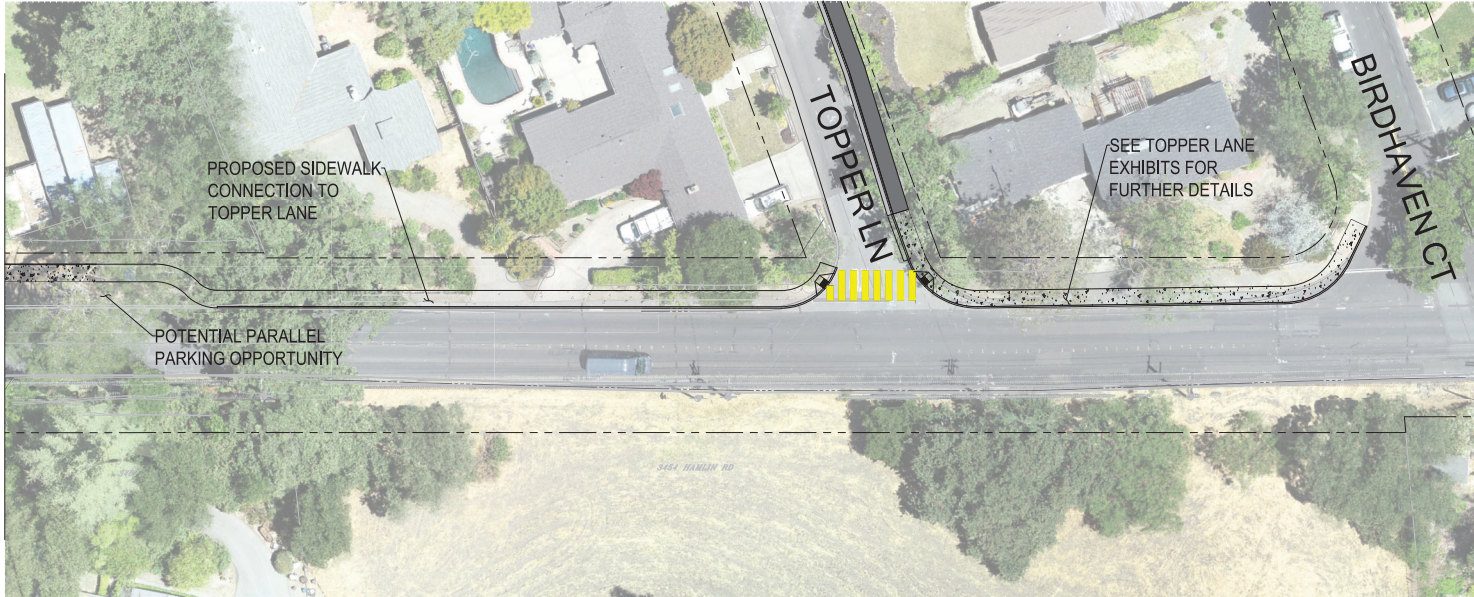
MULTI-USE PATH AND SCHOOLS
SAFETY PROJECT
LAFAYETTE CALIFORNIA

LAYOUT EXHIBIT
ST MARY ROAD DROP-OFF
CONCEPT A

NO PART OF THIS DOCUMENT MAY BE REPRODUCED OR TRANSMITTED IN ANY FORM INCLUDING PHOTOCOPYING, RECORDING OR ANY INFORMATION RETRIEVABLE AND STORAGE SYSTEM WITHOUT PERMISSION IN WRITING FROM SANDIS.



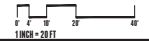
MATCHLINE - SEE BELOW



MATCHLINE - SEE ABOVE

ON-STREET PARKING COMPARISON ST MARYS ROAD, TOPPER LANE TO AVALON AVE				
	UNSTRIPED DIAGONAL PARKING	UNSTRIPED PARALLEL PARKING	STRIPED PARKING	TOTAL PARKING
EXISTING	30	6	0	36
CONCEPT B	0	7	11	18

THE TABLE ABOVE DOES NOT INCLUDE PARKING WITHIN THE DROP-OFF LANE DURING NON-PEAK HOURS, WHICH IS BEING CONSIDERED. IF IMPLEMENTED, THIS WOULD ADD APPROXIMATELY 12 UNMARKED PARKING STALLS.



BUILD ON.
SANDIS.NET

DATE: 2023-11-15
SCALE: 1" = 20'
PROJECT No.: 623048

No.	REVISION	DATE	BY

MULTI-USE PATH AND SCHOOLS
SAFETY PROJECT
LAFAYETTE CALIFORNIA

LAYOUT EXHIBIT
ST MARY ROAD DROP-OFF
CONCEPT B