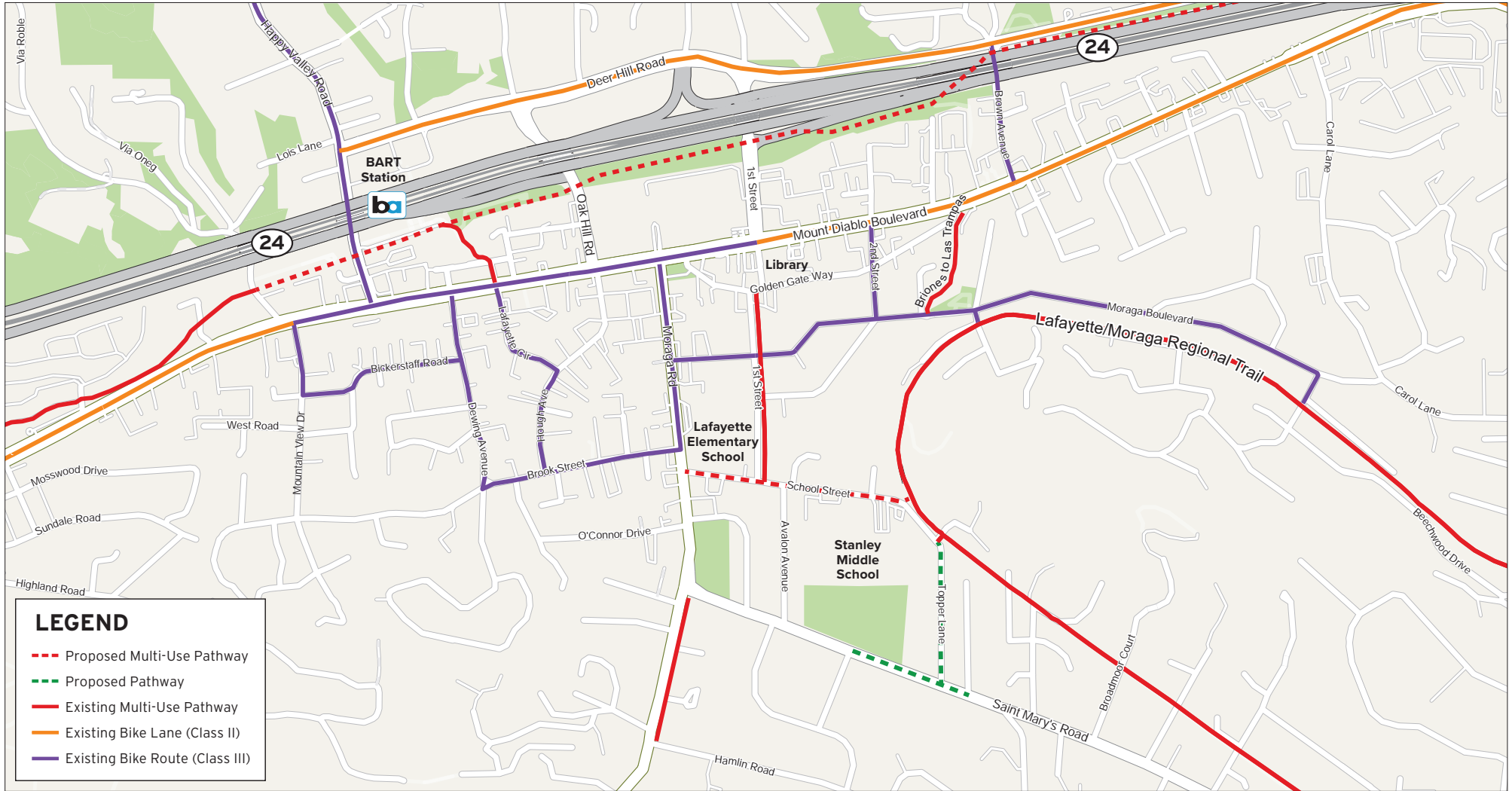


Attachment D: Project Overview Station Boards



Downtown Pathways and Schools Safety Project

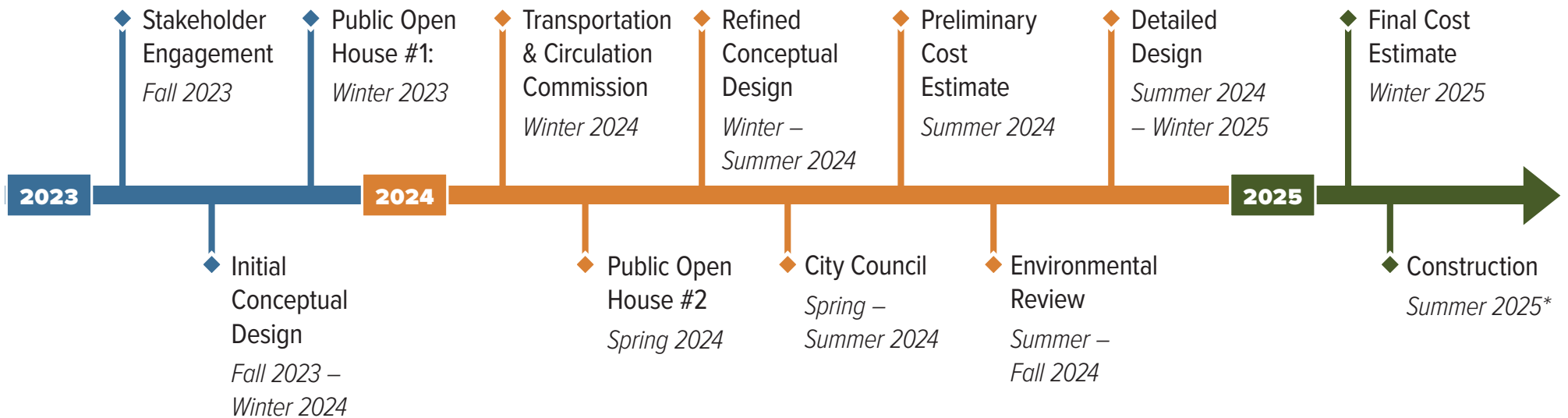
Bicycle Connections Map





Downtown Pathways and Schools Safety Project

Project Timeline*



*Subject to change

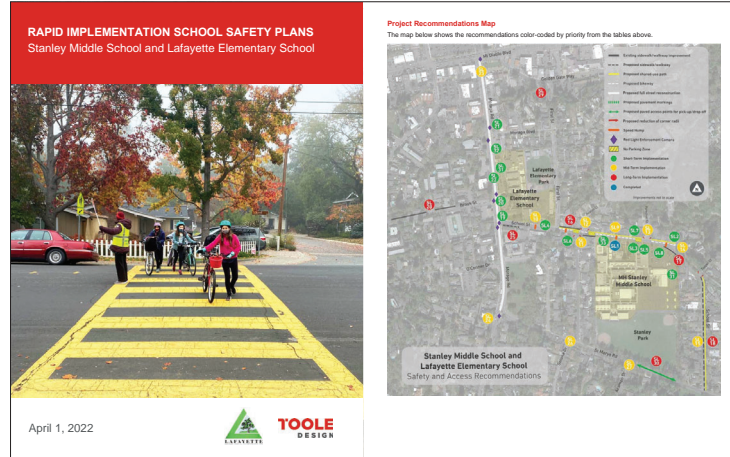
* Subject to Utility Coordination

Downtown Pathways and Schools Safety Project

Project History and Goals

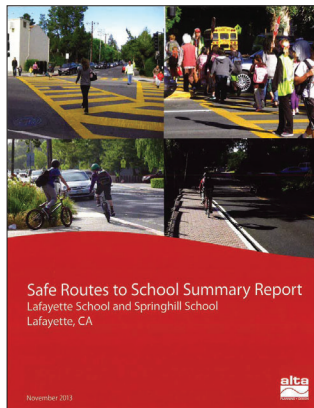
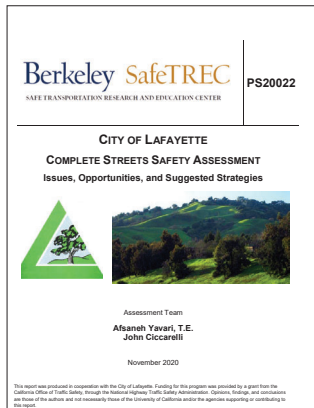
HISTORY OF THE PROJECT

The project elements, recommended in four studies done in the last decade, aim to enhance traffic safety, access, and circulation in Lafayette. These studies were initiated to improve safety and comfort for pedestrians and cyclists, including students.



GOALS OF THE PROJECT

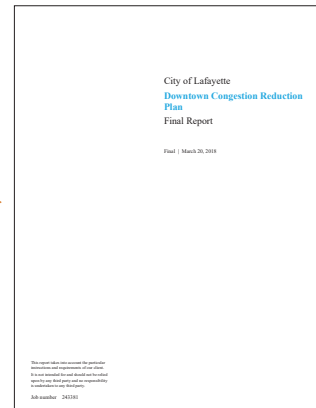
- ◆ Provide a **safe, complete, and protected walking/biking connection** between Downtown and the city's neighborhoods south of the project site.
- ◆ Expand Lafayette's **'low-stress'** pedestrian and bicycle network.
- ◆ **Fill the gap** between the Lafayette-Moraga Trail and the First Street pathway.
- ◆ **Improve safety** for students, parents, and caregivers who are walking or biking to and from Stanley Middle School and Lafayette Elementary School.
- ◆ **Reduce congestion** at school pick-up and drop-off adjacent to Stanley Middle School and Lafayette Elementary School.



▲ Rapid Implementation School Safety Plans
April 2022

▶ Downtown Congestion Reduction Plan
June 2018

◀ Safe Routes to School Summary Report
November 2013



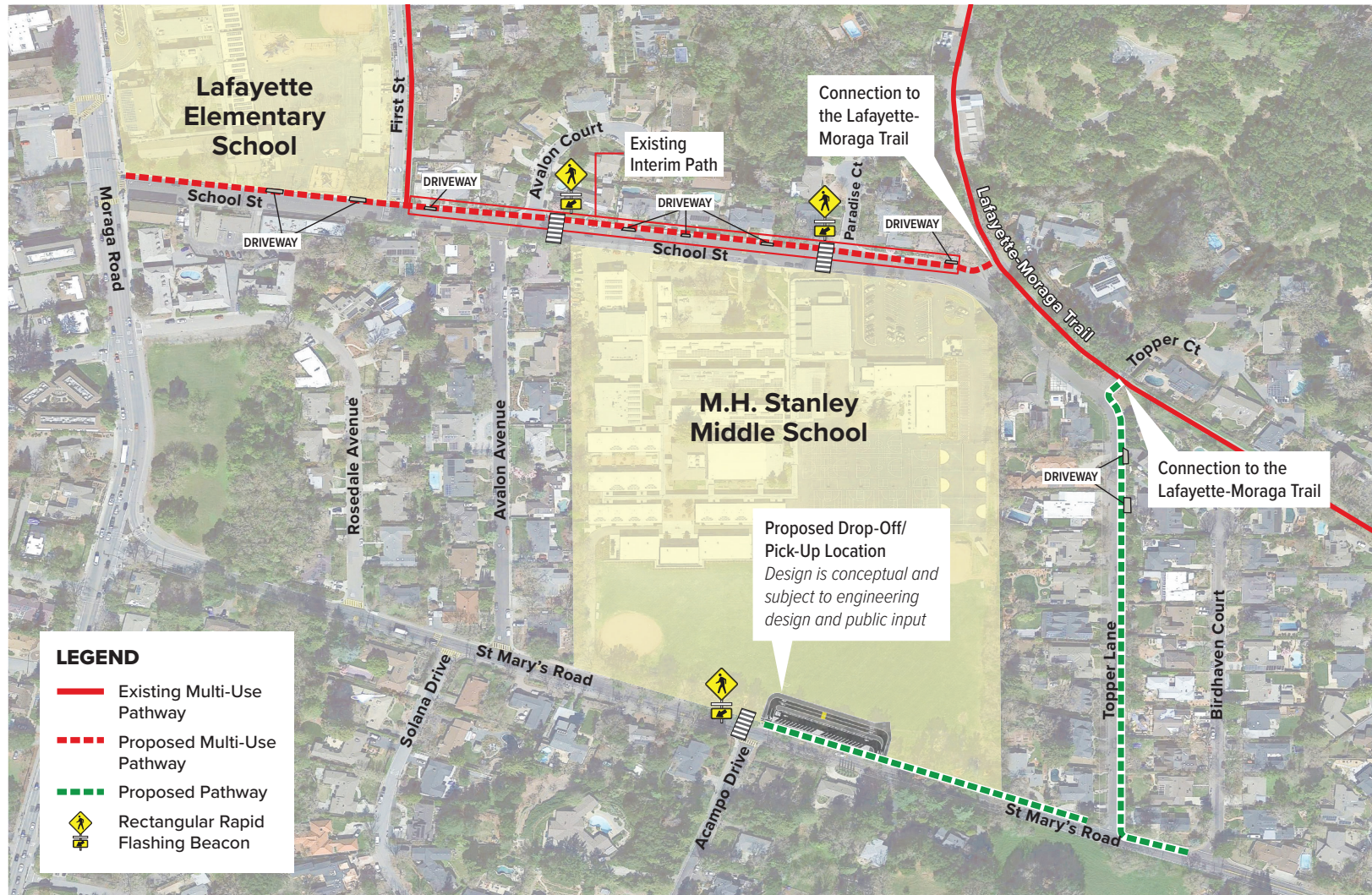
▲ Complete Streets Safety Assessment
November 2020





Downtown Pathways and Schools Safety Project

Project Map



Downtown Pathways and Schools Safety Project

Do you use the dropoff location on St Mary's Road below Stanley Middle School?

Place a **red dot** where you live/ start your trip and a **blue dot** where you end your trip after dropoff.

If your start/end is not shown on the map, place the dots near the edge of the map in the general direction of the location.

