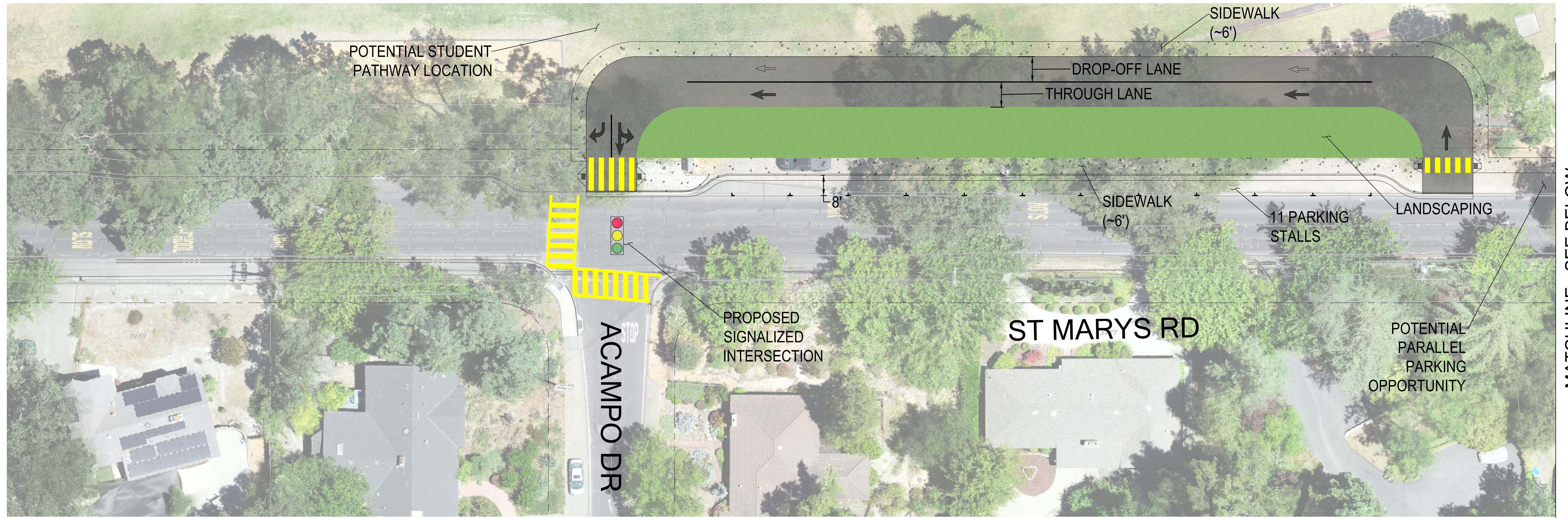
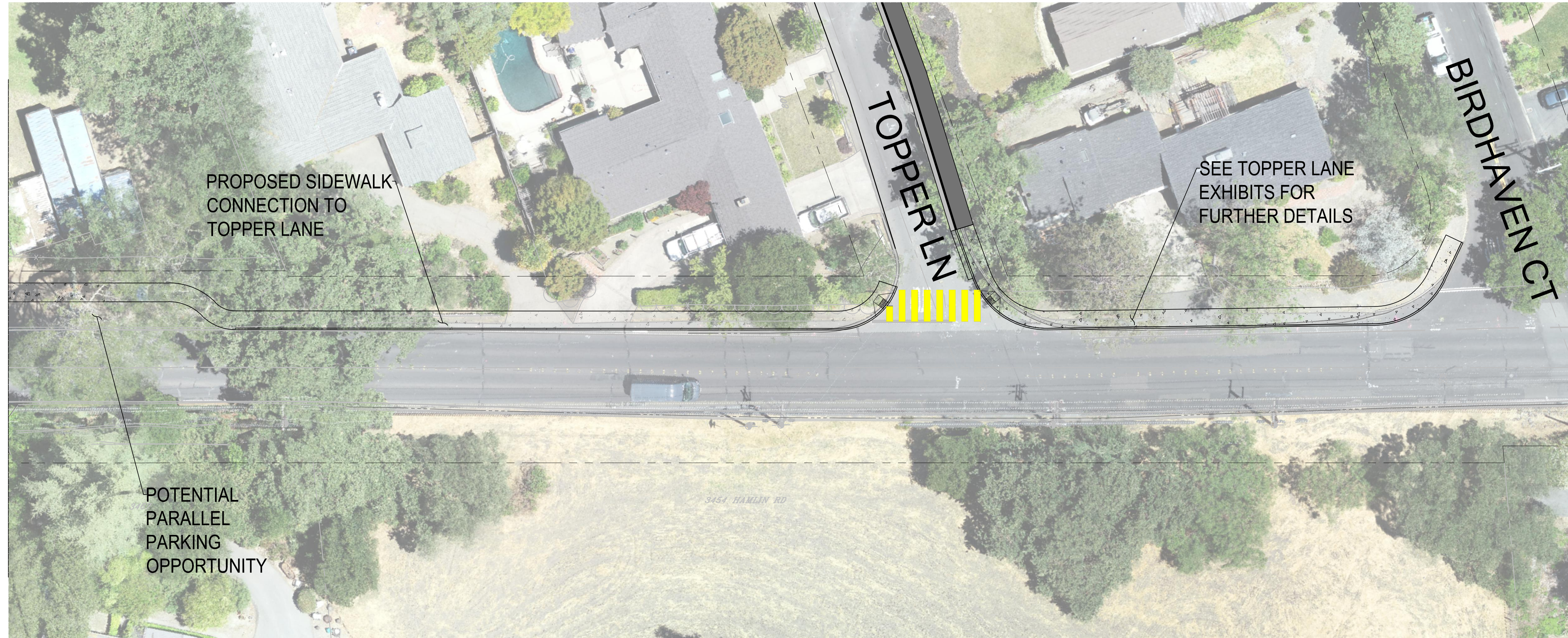


NO PART OF THIS DOCUMENT MAY BE REPRODUCED IN ANY FORM INCLUDING PHOTOCOPY, RECORDING OR ANY INFORMATION RETRIEVABLE AND STORAGE SYSTEM, WITHOUT PERMISSION IN WRITING FROM SANDIS.



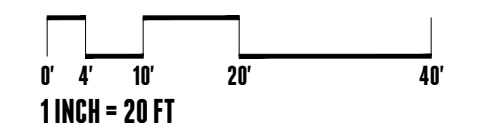
MATCHLINE - SEE BELOW



MATCHLINE - SEE ABOVE

ON-STREET PARKING COMPARISON ST MARYS ROAD, TOPPER LANE TO AVALON AVE				
	UNSTRIPED DIAGONAL PARKING	UNSTRIPED PARALLEL PARKING	STRIPED PARKING	TOTAL PARKING
EXISTING	30	6	0	36
CONCEPT A	0	9	11	20

THE TABLE ABOVE DOES NOT INCLUDE PARKING WITHIN THE DROP-OFF LANE DURING NON-PEAK HOURS, WHICH IS BEING CONSIDERED. IF IMPLEMENTED, THIS WOULD ADD APPROXIMATELY 12 UNMARKED PARKING STALLS.



BUILD ON.
SANDIS.NET

DATE: 2023-11-15
SCALE: 1" = 20'
PROJECT No.:
623048

No.	REVISION	DATE	BY

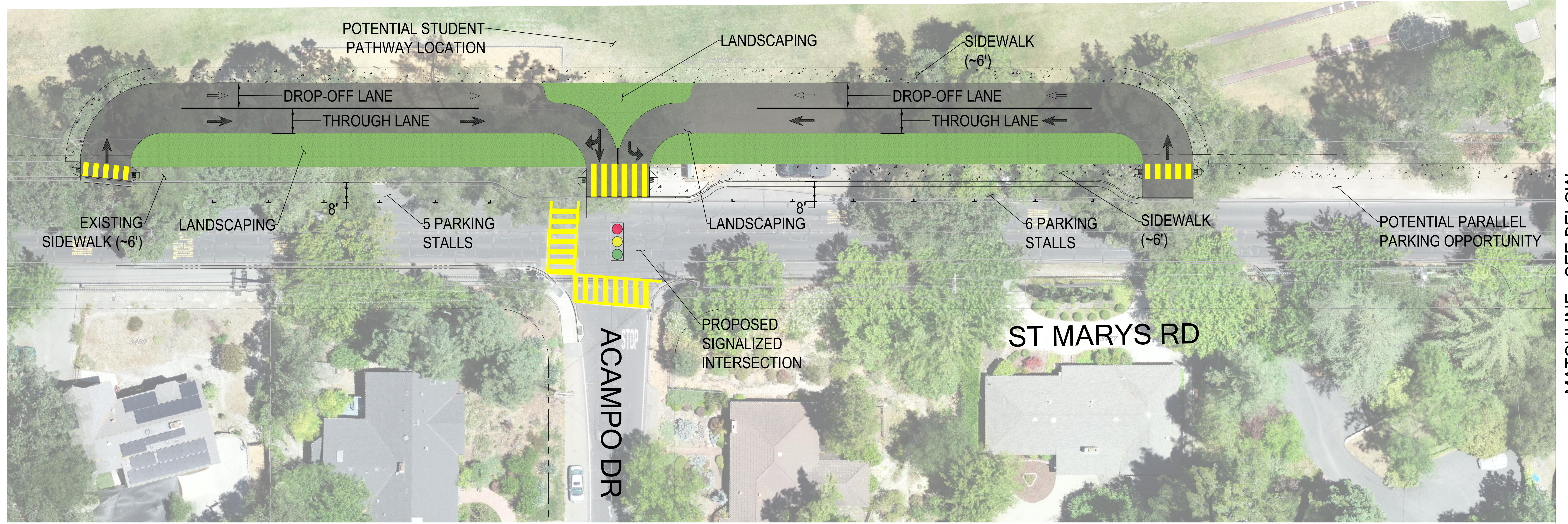
MULTI-USE PATH AND SCHOOLS
SAFETY PROJECT

LAFAYETTE

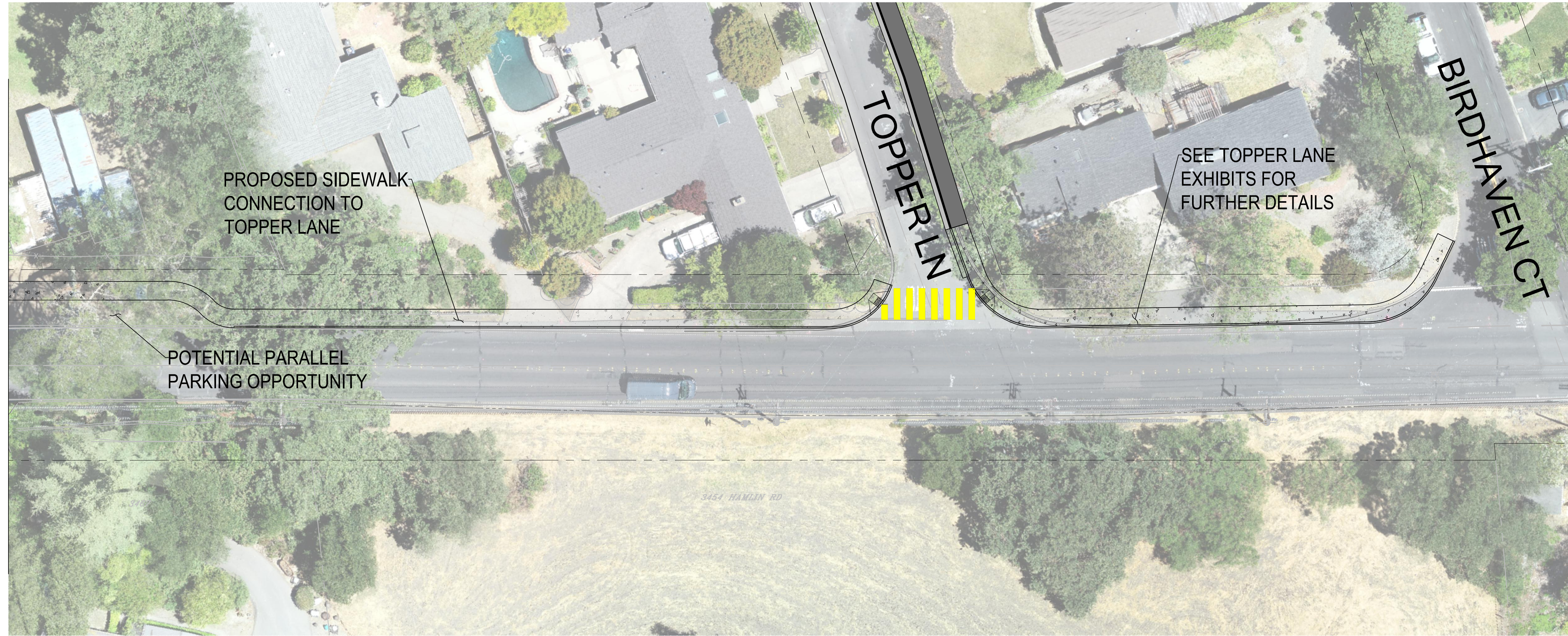
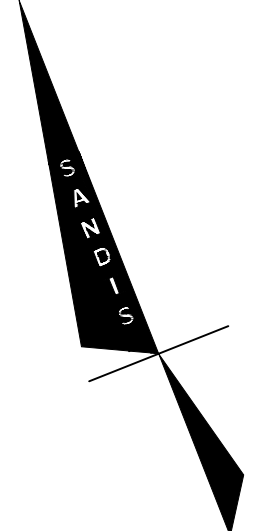
CALIFORNIA

LAYOUT EXHIBIT
ST MARY ROAD DROP-OFF
CONCEPT A

NO PART OF THIS DOCUMENT MAY BE REPRODUCED IN ANY FORM INCLUDING PHOTOCOPY, RECORDING OR ANY INFORMATION RETRIEVABLE AND STORAGE SYSTEM, WITHOUT PERMISSION IN WRITING FROM SANDIS.



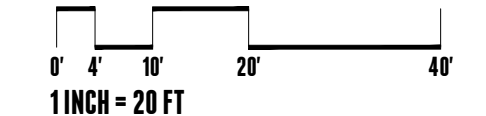
MATCHLINE - SEE BELOW



MATCHLINE - SEE ABOVE

ON-STREET PARKING COMPARISON ST MARYS ROAD, TOPPER LANE TO AVALON AVE				
	UNSTRIPED DIAGONAL PARKING	UNSTRIPED PARALLEL PARKING	STRIPED PARKING	TOTAL PARKING
EXISTING	30	6	0	36
CONCEPT B	0	7	11	18

THE TABLE ABOVE DOES NOT INCLUDE PARKING WITHIN THE DROP-OFF LANE DURING NON-PEAK HOURS, WHICH IS BEING CONSIDERED. IF IMPLEMENTED, THIS WOULD ADD APPROXIMATELY 12 UNMARKED PARKING STALLS.



BUILD ON.
SANDIS.NET

DATE: 2023-11-15
SCALE: 1" = 20'
PROJECT No.: 623048

No.	REVISION	DATE	BY

MULTI-USE PATH AND SCHOOLS
SAFETY PROJECT

LAFAYETTE

CALIFORNIA

LAYOUT EXHIBIT
ST MARY ROAD DROP-OFF
CONCEPT B