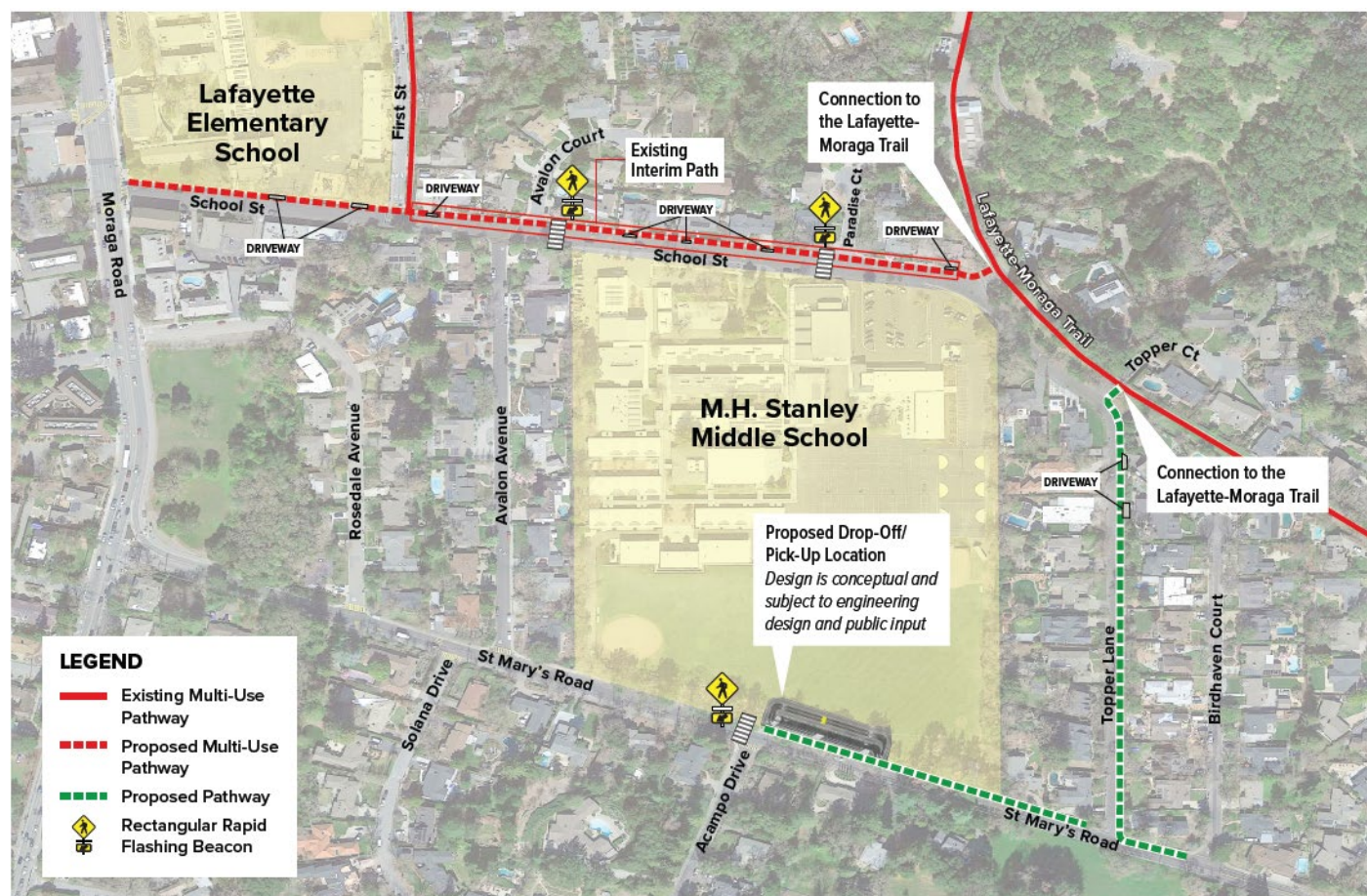


Connecting Lafayette: Downtown Pathways and Schools Safety Project Fact Sheet



What is the Project?

The Connecting Lafayette project enhances safety with a dedicated path connecting downtown, Lafayette Elementary, Stanley Middle School, and the Lafayette Moraga Pathway. It also eases neighborhood congestion by introducing an alternative drop-off area on St. Mary's Street for Stanley Middle School.



The project will:

- ▶ Expand Lafayette's 'low-stress' pedestrian and bicycle network.
- ▶ Fill the gap between the Lafayette-Moraga Trail and the First Street pathway.
- ▶ Provide a safe, complete, and protected walking/biking connection between Downtown and the city's neighborhoods south of the project site.
- ▶ Improve safety for students, parents, and caregivers who are walking or biking to and from Stanley Middle School and Lafayette Elementary School.
- ▶ Address congestion related to school pick-up and drop-off adjacent to Stanley Middle School and Lafayette Elementary School.

What is the Project Scope?

The Connecting Lafayette Project will include the following components:

School Street

- ▶ Design and construct a multi-use pathway from Moraga Road to Topper Lane

Topper Lane

- ▶ Design and construct a multi-use pathway from School Street to St. Mary's Road

St. Mary's Road

- ▶ Design and construct a sidewalk on the north side from Topper Lane to Birdhaven Court
- ▶ Design a formal and expanded drop-off/pick-up zone behind Stanley Middle School*
- ▶ Design an extension of the sidewalk along the north side from Acampo Drive to Topper Lane*

* At present time, funding is only available for the design of these components on St. Mary's Road. The City does not currently have funding for construction.

What is the history of the Project?

Over the last decade, the City conducted four studies on traffic safety, access, and circulation in Lafayette. The idea for the multi-use pathway originated from a 2022 Rapid Implementation School Safety Plan for Stanley Middle School and Lafayette Elementary School, a 2020 Complete Street Safety Assessment by Berkeley SafeTREC, and a 2013 Safe Routes to School Summary Report for Lafayette Elementary School and Springhill Elementary School. Furthermore, the multi-use pathways and Stanley Middle School drop-off zone were proposed in the 2018 Downtown Congestion Relief Plan.

What is a Multi-Use Pathway?

A multi-use pathway is a path for use by pedestrians and cyclists only with physical separation from and minimal crossflow by vehicles. A multi-use pathway can be one-way or two-way, can be raised at the same height as a sidewalk, or constructed as a trail.

What is the Funding Source for the Project?

The City secured two federal grants for the project, which will fund the design and construction of the pathways along School Street, Topper Lane, and the sidewalk along St. Mary's Road between Topper Lane and Birdhaven Court. Local funds will pay for the design of the drop-off zone along St. Mary's Road and the sidewalk extension between Acampo Drive and Topper Lane.

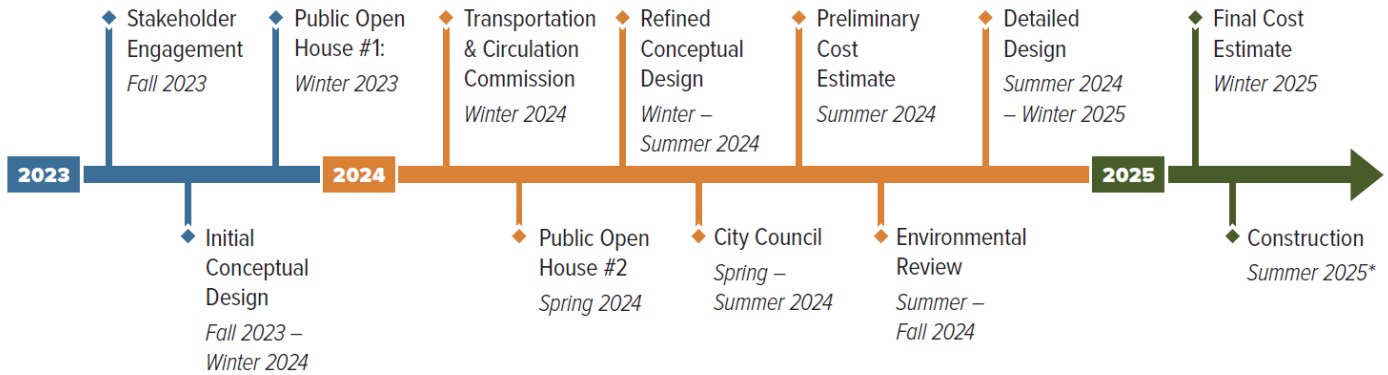
The two federal grants and total funding amounts include:

- ▶ Community Project Funding/Congressionally Directed Spending (\$3,100,000)

- ▶ One Bay Area Grant, Cycle 3 (\$750,000)

What is the Project Schedule?

The following represent the primary project phases with approximate timelines. This is subject to change.



Schedule is subject to change. *Subject to Utility Coordination.

What's Next

Sign up for project updates via the **City's E -Notification** system:
<https://www.lovelafayette.org/city-hall/e-notification>