

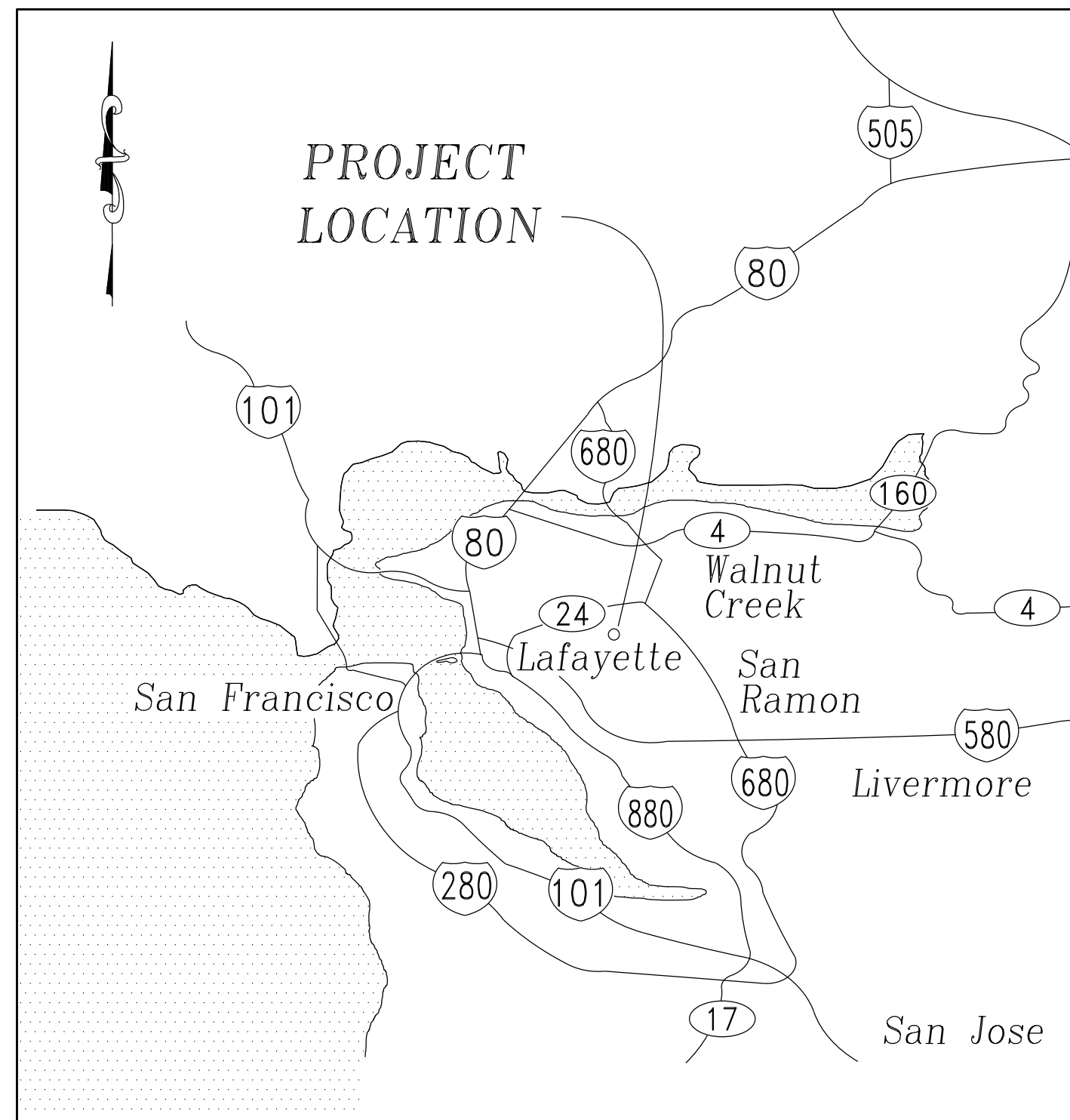
CITY OF LAFAYETTE

2023 PATHWAY PROJECT PROJECT NUMBER 014-9737

GENERAL NOTES:

- UTILITY INFORMATION AND OBSTRUCTIONS SHOWN ON THE PROJECT PLANS AND PROVIDED IN THE SPECIFICATION ARE ONLY INFORMATIONAL. IT IS THE CONTRACTOR'S RESPONSIBILITY TO VERIFY THE LOCATION AND ELEVATION OF ALL EXISTING UTILITIES WITHIN THE WORK AREA PRIOR TO BEGINNING CONSTRUCTION. CONTRACTOR SHALL NOTIFY UNDERGROUND SERVICE ALERT (U.S.A.) AT 811 A MINIMUM OF TWO WORKING DAYS IN ADVANCE OF ANY EXCAVATION. EXCAVATION SHALL NOT BEGIN UNTIL UNDERGROUND UTILITIES HAVE BEEN LOCATED.
- THE CONTRACTOR SHALL NOTIFY THE APPROPRIATE AGENCIES PRIOR TO THE START OF ANY WORK WHICH MAY AFFECT THEIR FACILITIES. THE FOLLOWING UTILITIES AND AGENCIES ARE KNOWN TO HAVE FACILITIES WITHIN THE PROJECT LIMITS:

| | |
|---|----------------|
| CENTRAL CONTRA COSTA SANITARY DISTRICT | (925) 228-9500 |
| EAST BAY MUNICIPAL UTILITY DISTRICT (WATER) | (510) 287-0834 |
| AT&T (TELEPHONE) | (866) 346-1168 |
| PACIFIC GAS AND ELECTRIC (EMERGENCY NUMBER) | (800) 743-5000 |
| REPUBLIC WASTE (GARBAGE/RECYCLING) | (925) 685-4711 |
| CONSOLIDATED FIRE PROTECTION DISTRICT | (925) 930-5531 |
| SENFNCO COMMUNICATIONS (COMCAST CABLE TV) | (925) 349-3300 |
- THE CONTRACTOR SHALL INSPECT THE PROJECT SITE PRIOR TO SUBMITTING A BID IN ORDER TO OBSERVE AND DETERMINE THE EXISTING SITE CONDITIONS.
- TRAFFIC CONTROL DURING CONSTRUCTION SHALL BE THE CONTRACTOR'S RESPONSIBILITY. ALL TRAFFIC CONTROL AND DEVICES SHALL BE IN ACCORDANCE WITH THE LATEST EDITION OF THE "MANUAL OF TRAFFIC CONTROLS FOR CONSTRUCTION AND MAINTENANCE WORK ZONES" USED BY THE STATE OF CALIFORNIA, DEPARTMENT OF TRANSPORTATION.
- THE CONTRACTOR SHALL ASSUME SOLE AND COMPLETE RESPONSIBILITY FOR JOB SITE CONDITIONS DURING THE COURSE OF CONSTRUCTION OF THE PROJECT. THESE PLANS DO NOT INCLUDE COMPONENTS NECESSARY FOR CONSTRUCTION SAFETY. IT IS THE CONTRACTOR'S RESPONSIBILITY TO PROVIDE FOR THE SAFETY OF ALL PERSONS AND PROPERTY DURING THE COURSE OF THE PROJECT.
- THE CONTRACTOR SHALL COMPLY WITH THE RULES AND REGULATIONS OF CAL/OSHA. THIS REQUIREMENT SHALL BE MADE TO APPLY CONTINUOUSLY AND NOT BE LIMITED TO NORMAL WORKING HOURS.
- THE CONTRACTOR SHALL PROVIDE FOR CONTINUOUS INGRESS AND EGRESS TO ALL PUBLIC AND PRIVATE PROPERTIES ADJACENT TO THE WORK THROUGHOUT THE PERIOD OF CONSTRUCTION.
- THE CONTRACTOR SHALL BE RESPONSIBLE FOR ANY DAMAGE TO THE SITE OR THE SURROUNDING AREA AS A RESULT OF THE CONTRACTOR'S WORK OR OPERATIONS. EXISTING CURB, GUTTER AND ANY OTHER IMPROVEMENTS THAT ARE DAMAGED OR DISPLACED BY THE CONTRACTOR SHALL BE REPLACED AT THE CONTRACTOR'S EXPENSE.
- THE CONTRACTOR SHALL LOCATE, REFERENCE, AND SET SUFFICIENT MARKS FOR ALL CITY OWNED AND NON-CITY OWNED EXISTING MANHOLE COVERS, VALVE COVERS, SURVEY MONUMENTS, IRON PIPES, AND RAILROAD SPIKES, PRIOR TO STARTING ANY WORK IN THE PAVING AREA WITHIN THE PROJECT LIMITS.
- UNLESS DRIVEWAY, SIDEWALK OR OTHER CONFORM WORK IS SHOWN, CONTRACTOR SHALL PROTECT ADJACENT DRIVEWAY, SIDEWALK OR OTHER IMPROVEMENTS IN PLACE WHEN DOING REMOVAL AND REPLACEMENT.



VICINITY MAP
NTS

APPLICABLE STANDARD PLANS

INCLUDING BUT NOT LIMITED TO THE FOLLOWING:

CALTRANS STANDARD PLANS (DATED 2018)

| | |
|-----------|--|
| A20 A,B | PAVEMENT MARKERS AND TRAFFIC LINES, TYPICAL DETAILS |
| A24 A,C,D | PAVEMENT MARKINGS, ARROWS, SYMBOLS, NUMERALS, WORDS AND CROSSWALKS |
| A73 B | MARKERS |
| A77 N1 | MIDWEST GUARDRAIL SYSTEM STANDARD RAILING SECTION |
| A77 L1 | (WOOD POST WITH WOOD BLOCKS) |
| | METAL BEAM GUARD RAILING RECONSTRUCT INSTALLATION |
| A77 L3 | MIDWEST GUARDRAIL SYSTEM WOOD POST AND WOOD BLOCK DETAIL |
| A87 A | CURBS AND DRIVEWAYS |
| A87 B | HOT MIX ASPHALT DIKES |
| A88 A,B | CURB RAMP DETAILS |
| D77 A,B | GRATE DETAILS |

CONTRA COSTA COUNTY STANDARD DETAILS (DATED 2014)

| | |
|------|---|
| CA71 | MEDIAN, CURB AND AC DIKE DETAILS |
| CA90 | MAILBOX DETAILS |
| CD27 | TYPE 'G' INLET |
| CD29 | TYPE 'J' INLET |
| CD35 | STANDARD INLET MANHOLE PLAN NOTES AND DETAILS |

LEGEND:

| | |
|---|--|
| CONFORM GRIND EXISTING PAVEMENT | |
| NEW ASPHALT PAVEMENT SECTION | |
| REMOVE CONCRETE OR ASPHALT IMPROVEMENTS | |
| CONSTRUCT NEW CONCRETE IMPROVEMENTS | |

ABBREVIATIONS:

| | |
|--------------|--------------------------------------|
| AB | AGGREGATE BASE |
| AC | ASPHALT CONCRETE |
| ADJ | ADJUST |
| BC | BEGIN CURVE |
| BVC | BEGIN VERTICAL CURVE |
| BW | BACK OF WALK |
| CL | CENTER LINE |
| CB | CATCH BASIN |
| CMP | CORRUGATED METAL PIPE |
| (D),DES | DESIGN |
| D/W,DWY | DRIVEWAY |
| DI | DRAIN INLET |
| EC | END CURVE |
| ELEV | ELEVATION |
| EP | EDGE OF PAVEMENT |
| ETW | EDGE OF TRAVELED WAY |
| EVC | END VERTICAL CURVE |
| (E),EX,EXIST | EXISTING |
| F/C,FC | FACE OF CURB |
| FG | FINISH GRADE |
| FL | FLOWLINE |
| G | GAS |
| GB | GRADE BREAK |
| GR | STORM DRAIN INLET GRATE |
| (H),HORIZ | HORIZONTAL |
| INV | INVERT |
| IP | IRON PIPE |
| IRR | IRRIGATION |
| JP | JOINT POLE |
| LF | LINEAR FEET |
| LIP | LIB. OF GUTTER |
| LT | LEFT |
| MAX | MAXIMUM |
| MBGR | METAL BEAM GUARD RAIL |
| MH | MANHOLE |
| MIN | MINIMUM |
| MON | MONUMENT |
| OG | ORIGINAL GROUND |
| OH | OVERHEAD |
| PCC | POINT OF COMPOUND CURVE |
| PCC | PORTLAND CEMENT CONCRETE |
| PCVC | POINT OF CURVATURE VERTICAL CURVE |
| PD | PRIVATE DRAIN LINE |
| PVI | POINT OF INTERSECTION VERTICAL CURVE |
| PRC | POINT OF REVERSE CURVE |
| PVCP | POLYVINYLCHLORIDE PIPE |
| PVMT | PAVEMENT |
| R | RADIUS |
| RCP | REINFORCED CONCRETE PIPE |
| RT | RIGHT |
| S | SLOPE |
| SD | STORM DRAIN |
| SDMH | STORM DRAIN MANHOLE |
| SS | SANITARY SEWER |
| SSMH | SANITARY SEWER MANHOLE |
| STA | STATION |
| STD | STANDARD |
| STDS | STANDARDS |
| TYP | TYPICAL |
| T/C, TC | TOP OF CURB |
| (V), VERT | VERTICAL |
| VCP | VITRIFIED CLAY PIPE |
| W | WATER |
| WM | WATER METER |
| WV | WATER VALVE |

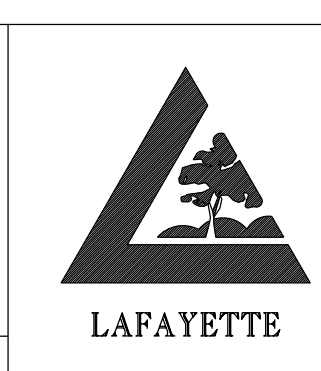
SHEET INDEX:

| NO. | DESCRIPTION |
|-------|--|
| 1 | TITLE SHEET |
| 2 | LOCATION MAP AND CONSTRUCTION AREA SIGNS |
| 3-4 | CONSTRUCTION DETAILS |
| 5 | RELIEZ VALLEY ROAD TYPICAL SECTIONS |
| 6 | RELIEZ VALLEY ROAD PLAN |
| 7 | PLEASANT HILL ROAD TYPICAL SECTIONS |
| 8-11 | PLEASANT HILL ROAD PLAN AND PROFILE |
| 12 | QUANDT ROAD TYPICAL SECTIONS |
| 13-16 | QUANDT ROAD PLAN AND PROFILE |

| DATE | MARK | REVISION | INIT. |
|------|------|----------|-------|
| | | | |
| | | | |
| | | | |
| | | | |
| | | | |
| | | | |
| | | | |
| | | | |
| | | | |
| | | | |

| | |
|--------------|--|
| Designed by: | |
| Drawn by: | |
| Checked by: | |
| Reviewed by: | |
| Date: | |

SIGN:



3675 Mount Diablo Boulevard, Suite 210
Lafayette, California, 94549-1968
(925) 299-3217 Fax (925) 284-3169
www.ci.lafayette.ca.us

REVIEWED BY:
CITY OF LAFAYETTE

CITY OF LAFAYETTE
PROJECT NO. 014-9737

2023 PATHWAY PROJECT
CONTRA COSTA COUNTY CALIFORNIA

TITLE SHEET AND
CONSTRUCTION AREA SIGNS

SCALE: NTS
SHEET 1 of 14



CONSTRUCTION AREA SIGNS:

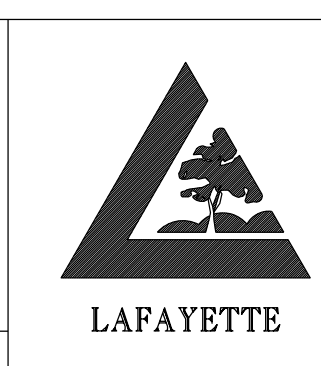
| SYMBOL | DESCRIPTION | SIZE | TOTAL QUANTITIES |
|--------|---|---------|------------------|
| G 20-2 | "END ROAD WORK" | 42"X18" | 6 |
| W 20-1 | "ROAD WORK AHEAD" | 36"X36" | 6 |
| C-FI | PROJECT IDENTIFICATION AND FUNDING SIGN | 48"X36" | 6 |

| DATE | MARK | REVISION | INIT. |
|------|------|----------|-------|
| | | | |
| | | | |
| | | | |
| | | | |
| | | | |
| | | | |
| | | | |
| | | | |
| | | | |
| | | | |

Designed by:
 Drawn by:
 Checked by:
 Reviewed by:
 Date:

REGISTERED PROFESSIONAL ENGINEER
 JOHN M. LUTTROPP
 No. 55064
 Exp. 6/30/24
 CIVIL
 STATE OF CALIFORNIA

SIGN: _____ DATE: _____

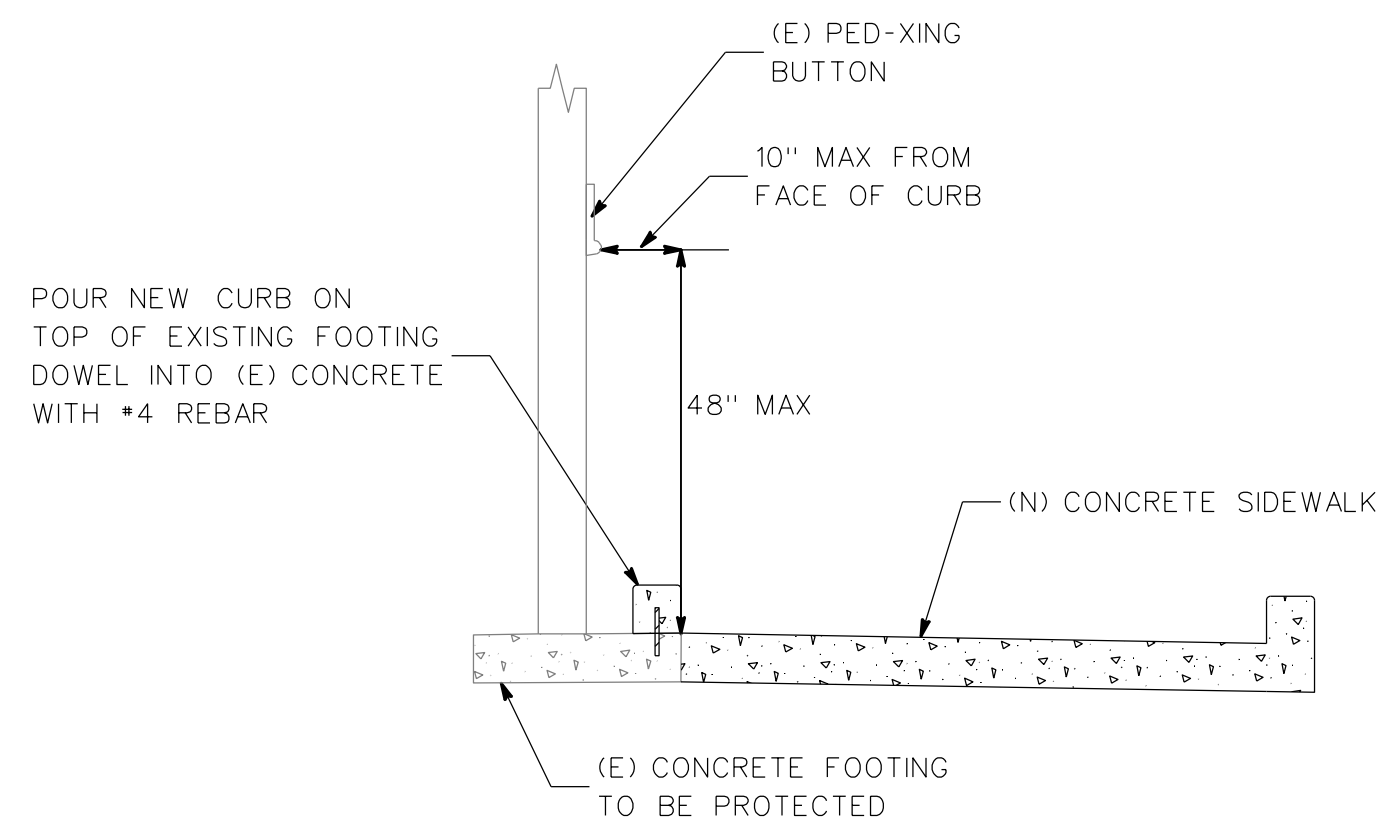


3675 Mount Diablo Boulevard, Suite 210
 Lafayette, California, 94549-1968
 (925) 299-3217 Fax (925) 284-3169
 www.ci.lafayette.ca.us

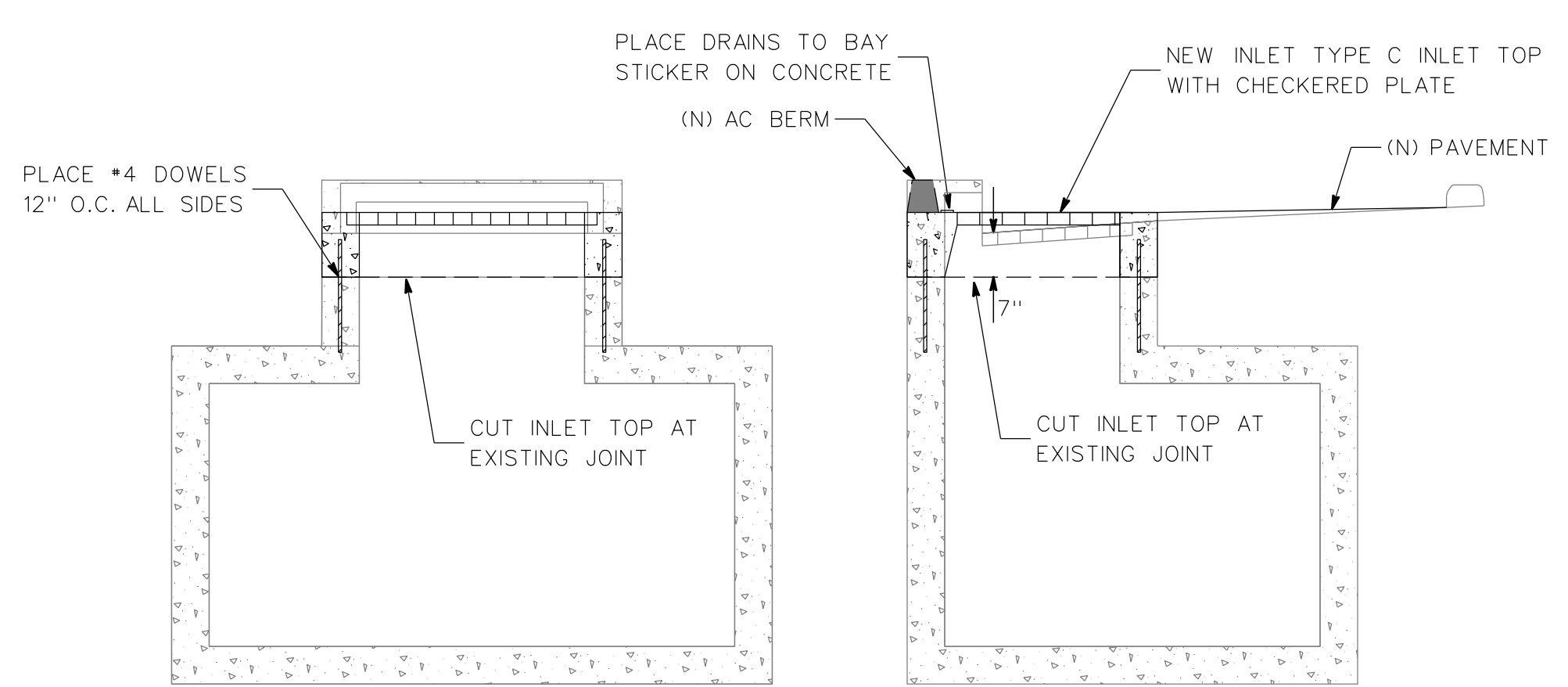
REVIEWED BY:
 CITY OF LAFAYETTE

CITY OF LAFAYETTE
 PROJECT NO. 014-9737
 2023 PATHWAY PROJECT
 CONTRA COSTA COUNTY CALIFORNIA

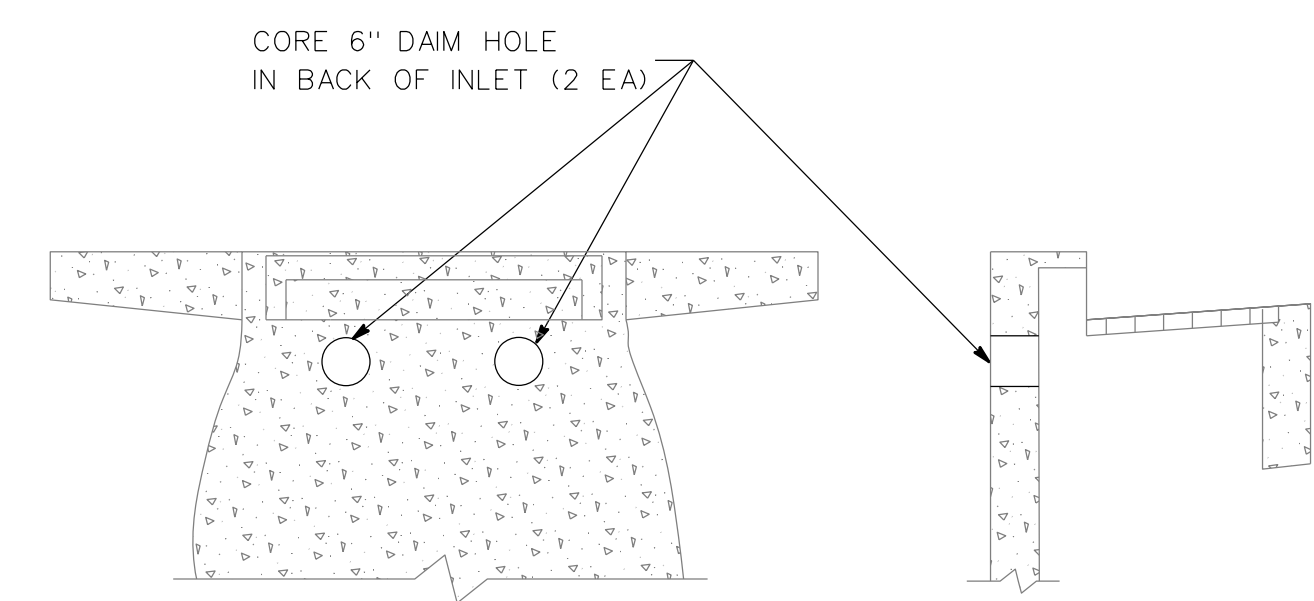
TITLE SHEET AND
 CONSTRUCTION AREA SIGNS
 SCALE: NTS SHEET 2 of 14



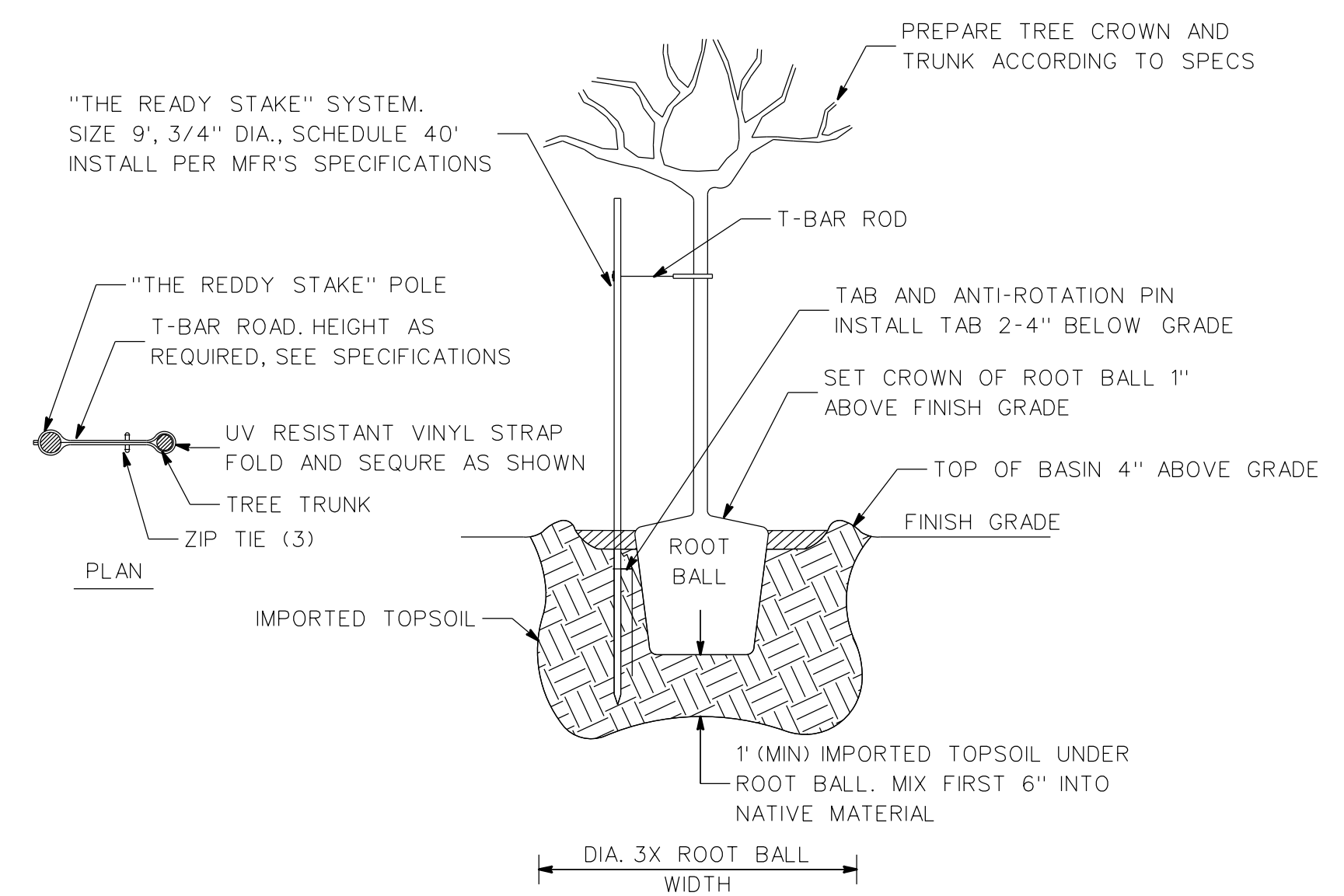
1 SIDEWALK AT PEDESTRAIN BUTTON



3 REPLACE INLET TOP WITH TYPE C INLET



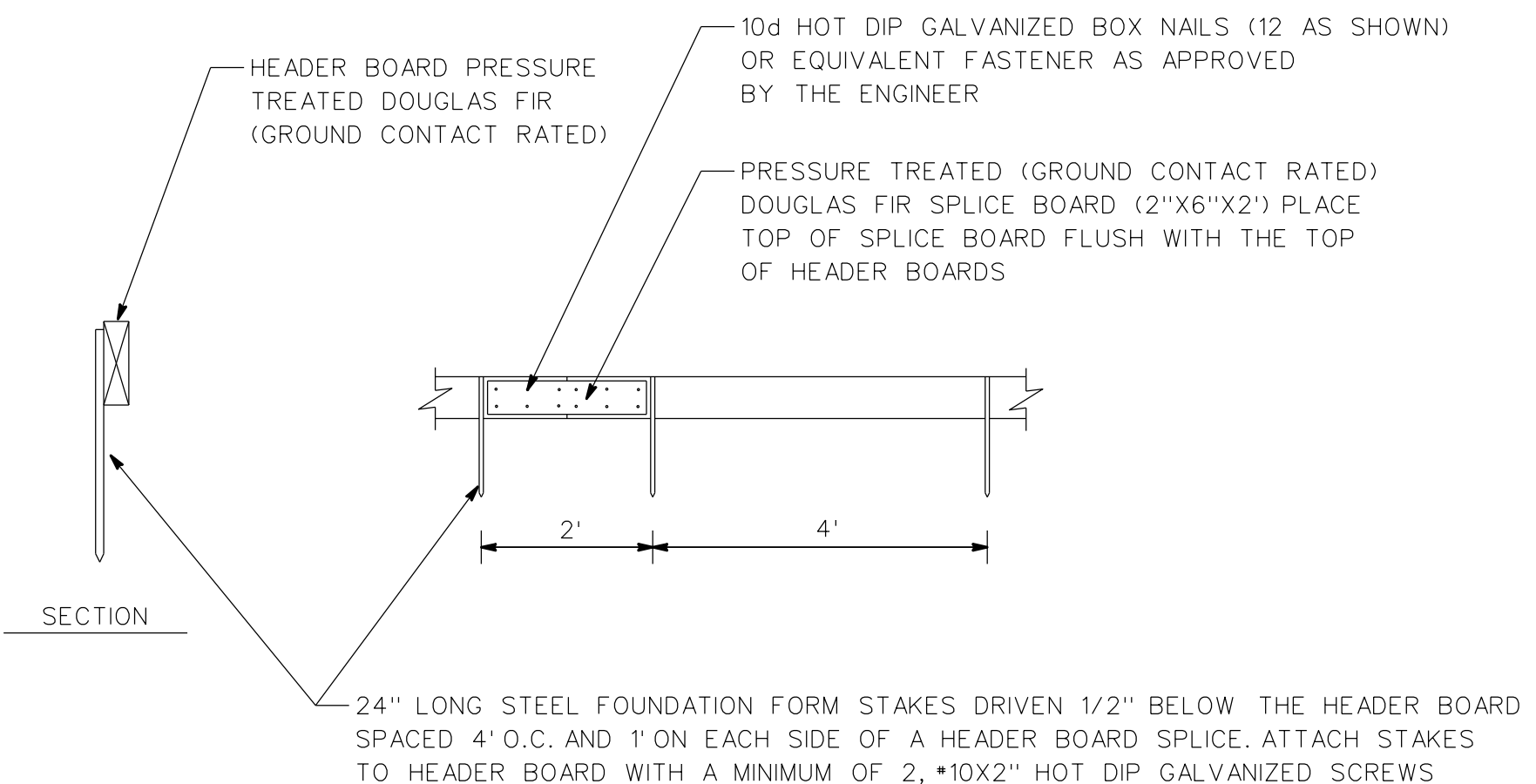
2 OPENING THROUGH BACK OF INLET



NOTE:

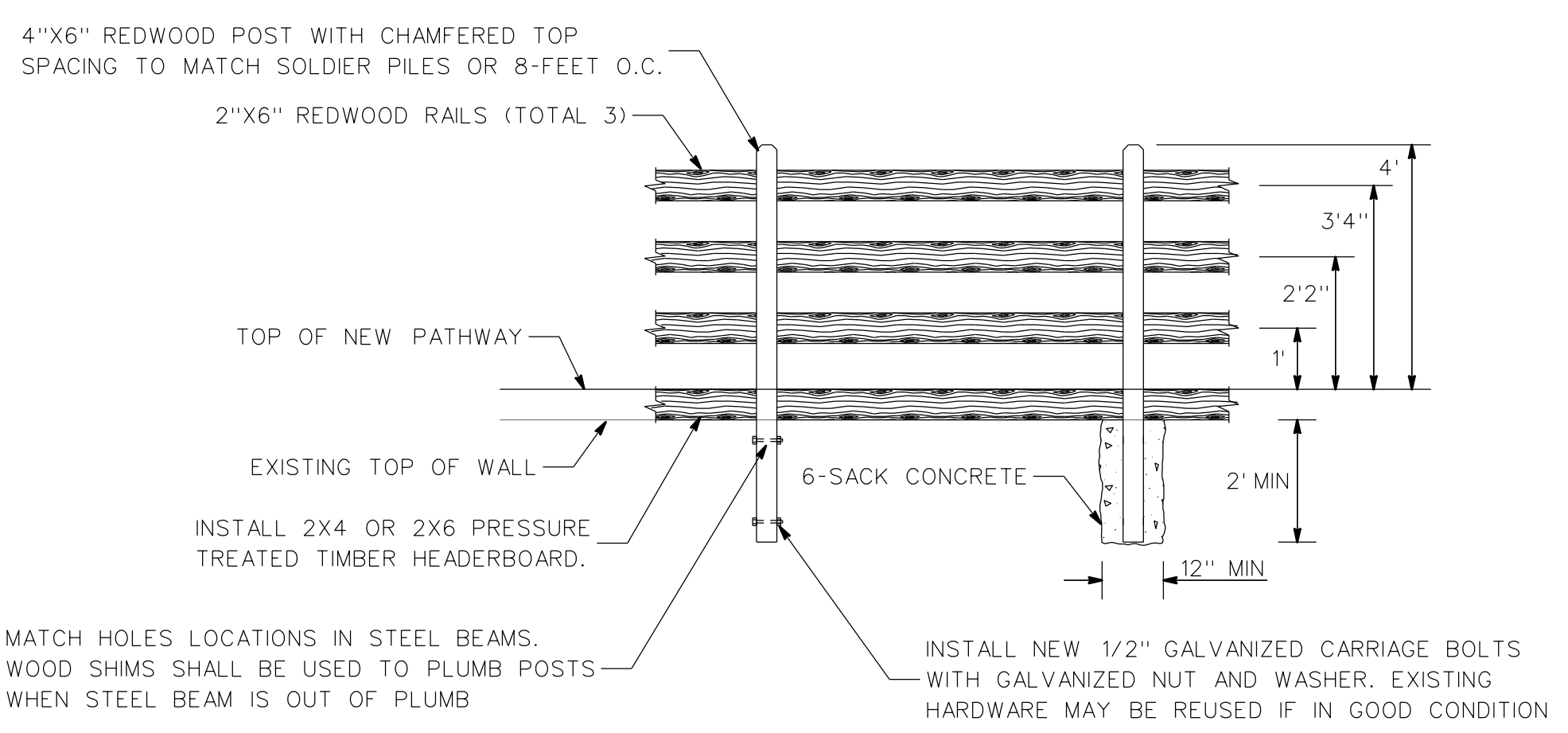
- FERTILIZER PLANTING TABLETS SHALL BE TIGHTLY COMPRESSED FERTILIZER CHIPS FORMING TABLET THAT IS INSOLUBLE IN WATER, AND IS DESIGNED TO RELEASE NUTRIENTS FOR AT LEAST 24 MONTHS. PLACE 1 TABLET BELOW ROOT BALL AND 4 ALONG SIDES OF ROOT BALL. TABLETS SHALL CONTAIN THE FOLLOWING MINIMUM PERCENTAGES, BY WEIGHT, OF THE FOLLOWING NUTRIENTS: 20% NITROGEN, 10% PHOSPHORUS, 5% POTASSIUM.
- ROOTBALL: TREES SHALL NOT BE ROOTBOUND. LOOSEN OUTSIDE ROOTS BEFORE PLANTING. PLANT TREE 1\"/>

4 TREE PLANTING DETAIL



- NOTES:
- PATHWAY HEADERBOARD SHALL BE 2\"/>

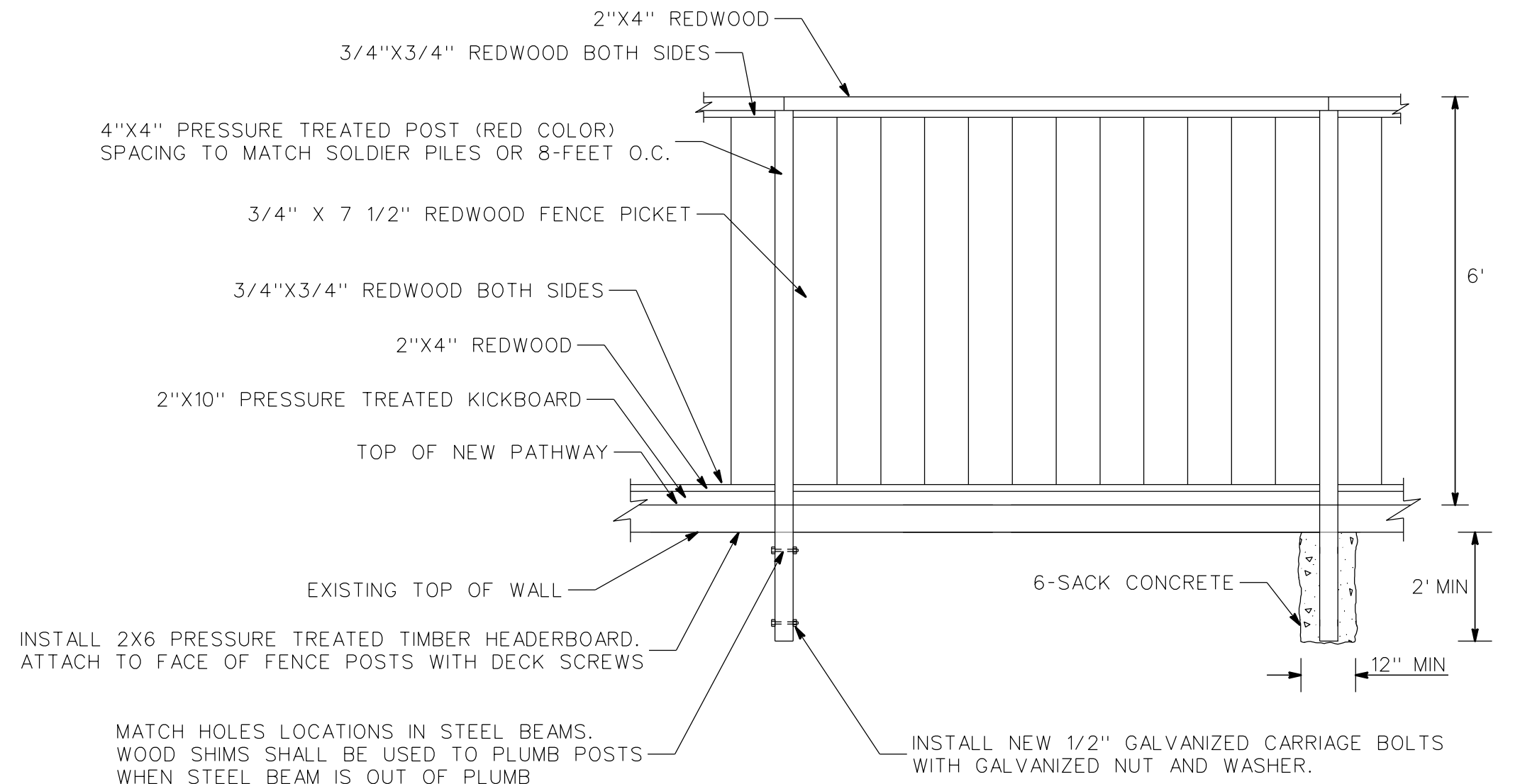
5 HEADER BOARD WITH FORM STAKES



MATCH HOLES LOCATIONS IN STEEL BEAMS. WOOD SHIMS SHALL BE USED TO PLUMB POSTS WHEN STEEL BEAM IS OUT OF PLUMB

INSTALL NEW 1/2\"/>

6 3-RAIL FENCE WITH HEADERBOARD MOUNTED ON WALL AND FREE STANDING



INSTALL 2X6 PRESSURE TREATED TIMBER HEADERBOARD. ATTACH TO FACE OF FENCE POSTS WITH DECK SCREWS

MATCH HOLES LOCATIONS IN STEEL BEAMS. WOOD SHIMS SHALL BE USED TO PLUMB POSTS WHEN STEEL BEAM IS OUT OF PLUMB

INSTALL NEW 1/2\"/>

7 6-FOOT TALL BOARD ON BOARD FENCE MOUNTED ON WALL AND FREE STANDING

| DATE | MARK | REVISION | INIT. |
|------|------|----------|-------|
| | | | |
| | | | |
| | | | |
| | | | |

Designed by:
 Drawn by:
 Checked by:
 Reviewed by:
 Date:

SIGN: _____ DATE: _____

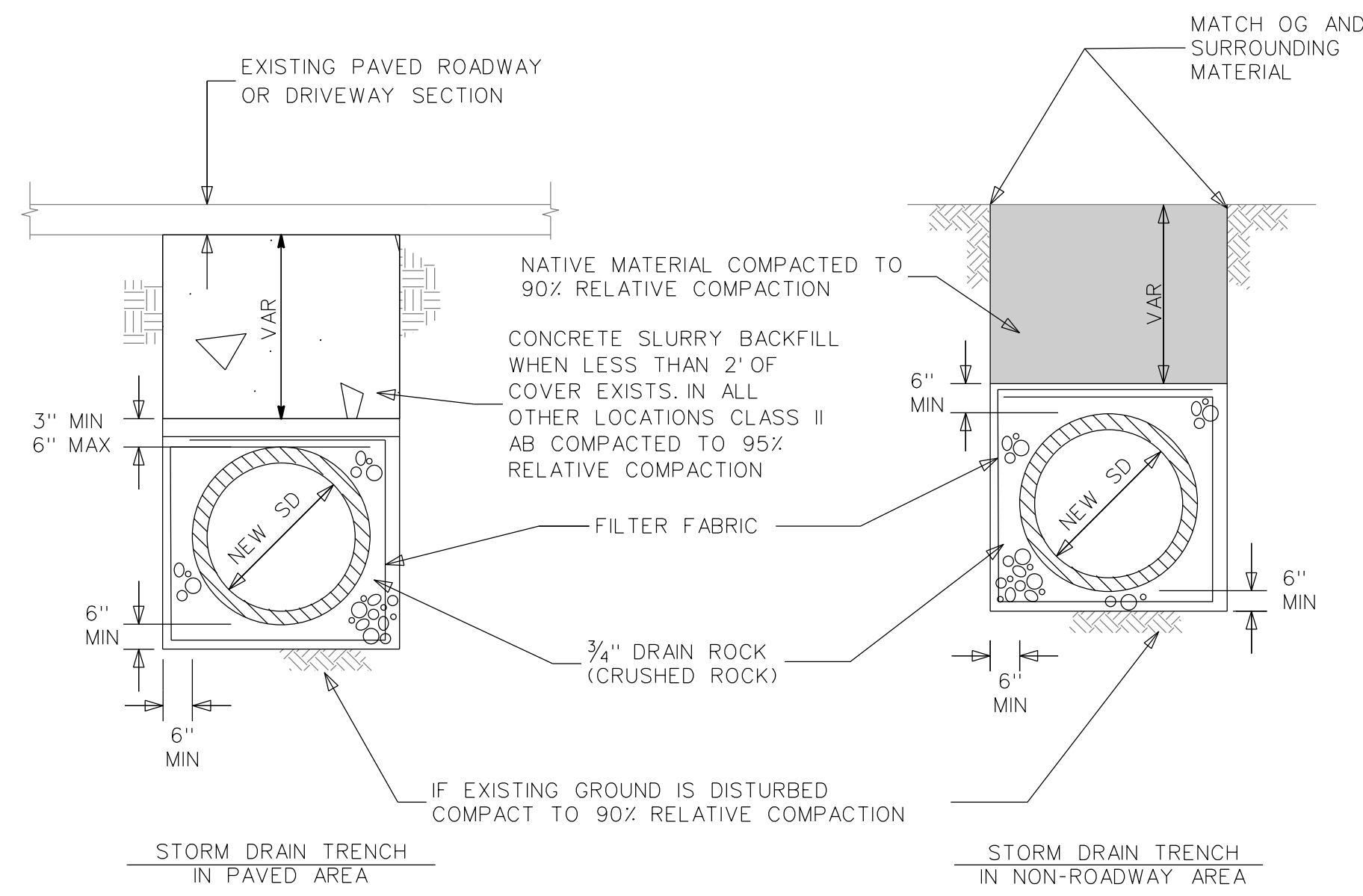


3675 Mount Diablo Boulevard, Suite 210
 Lafayette, California, 94549-1968
 (925) 299-3217 Fax (925) 284-3169
 www.ci.lafayette.ca.us

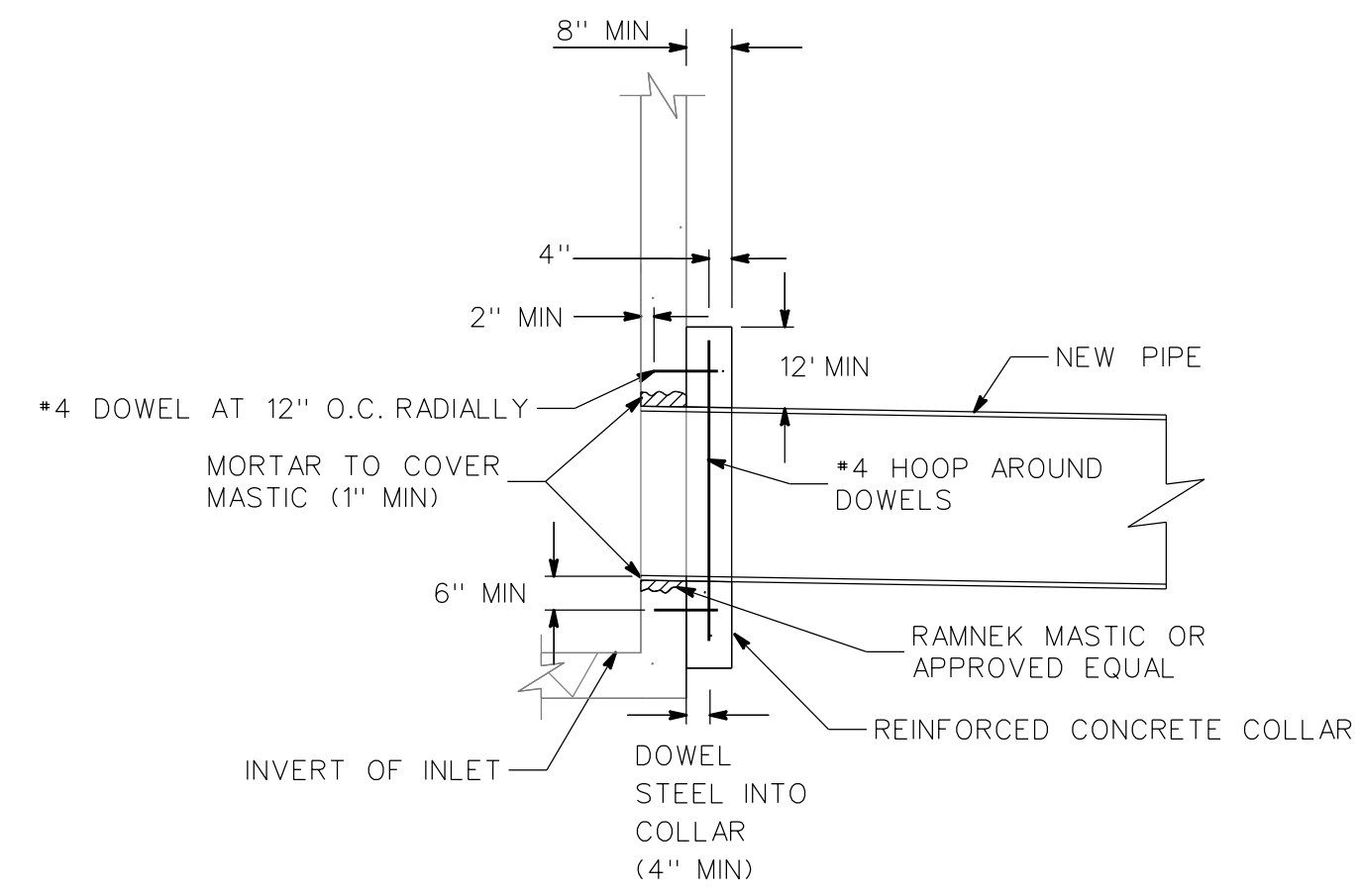
REVIEWED BY:
 CITY OF LAFAYETTE

CITY OF LAFAYETTE
 PROJECT NO. 014-9737
 2023 PATHWAY PROJECT
 CONTRA COSTA COUNTY CALIFORNIA

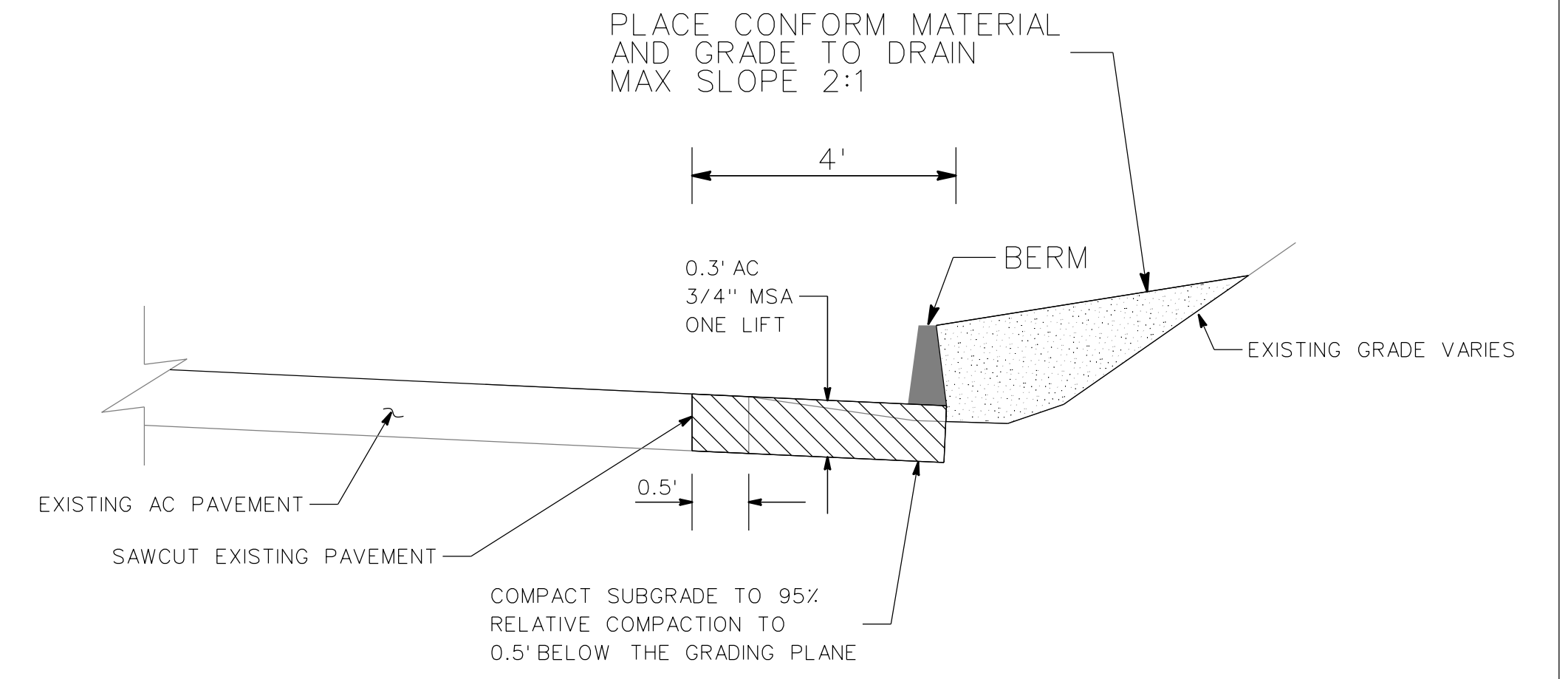
CONSTRUCTION
 DETAILS
 SCALE: _____ NTS _____ SHEET 3 of 14



1 STORM DRAIN TRENCH DETAILS
4 NTS



2 CONCRETE COLLAR PIPE CONNECTION
4 NTS TO EXISTING STRUCTURE

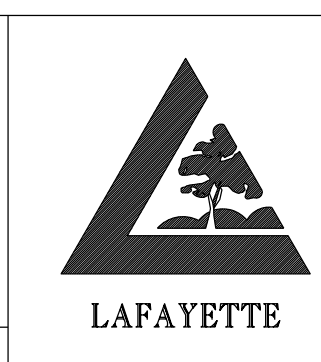


3 AC SHOULDER/ROAD WIDENING
4

| DATE | MARK | REVISION | INIT. |
|------|------|----------|-------|
| | | | |
| | | | |
| | | | |
| | | | |
| | | | |
| | | | |
| | | | |
| | | | |
| | | | |
| | | | |

Designed by:
 Drawn by:
 Checked by:
 Reviewed by:
 Date:

SIGN: _____ DATE: _____

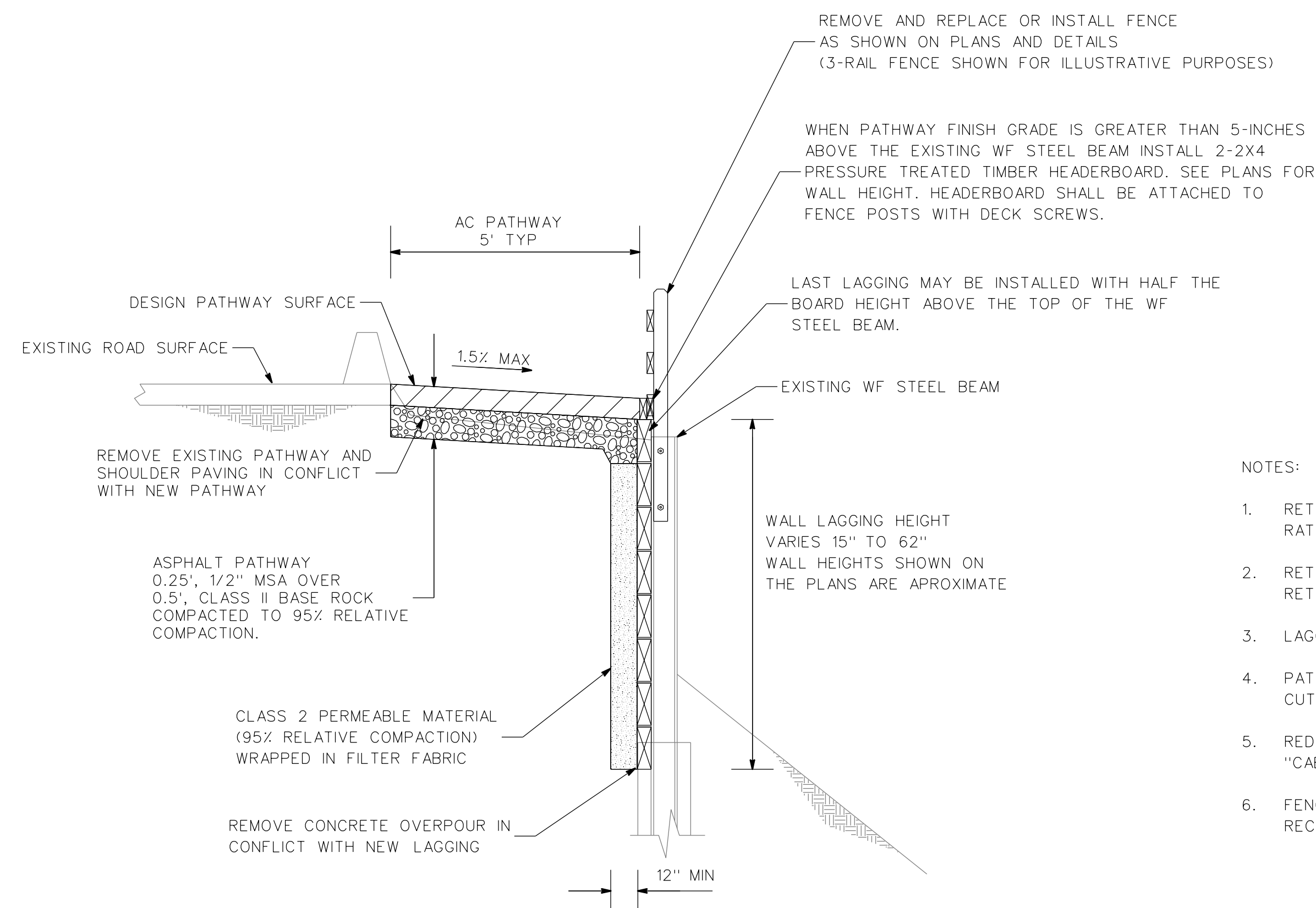


3675 Mount Diablo Boulevard, Suite 210
 Lafayette, California, 94549-1968
 (925) 299-3217 Fax (925) 284-3169
 www.ci.lafayette.ca.us

REVIEWED BY:
 CITY OF LAFAYETTE

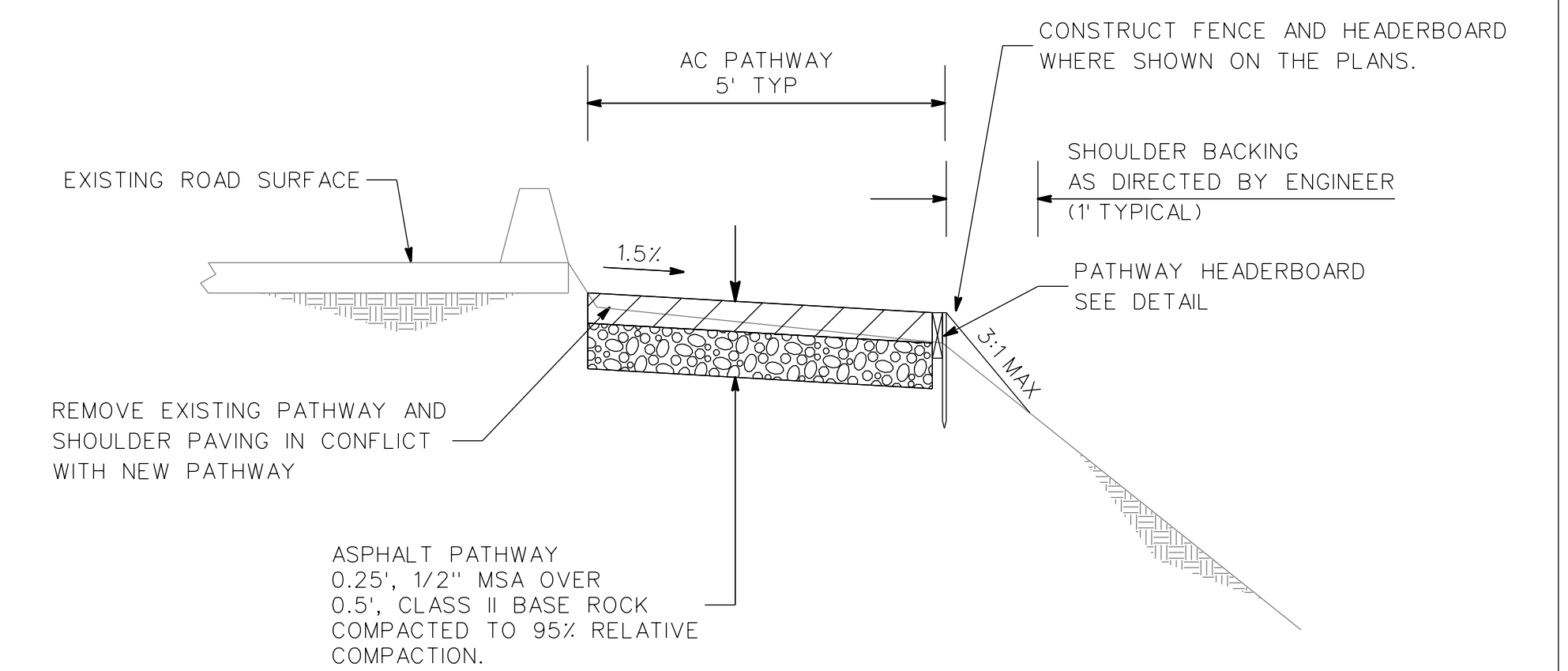
CITY OF LAFAYETTE
 PROJECT NO. 014-9737
 2023 PATHWAY PROJECT
 CONTRA COSTA COUNTY CALIFORNIA

CONSTRUCTION
 DETAILS
 SCALE: _____ NTS SHEET 4 of 14



NOTES:

1. RETAINING WALL LAGGING SHALL BE PRESSURE TREATED LUMBER SHALL BE GROUND CONTACT RATED DOGLAS FIR. CUT ENDS SHALL BE TREATED WITH PRESERVATIVE PRIOR TO INSTALLATION.
2. RETAINING WALL LAGGING SHALL BE 4"x12", 4"x10", 4"x8", AND OR 4"x6" AS NEEDED TO PROVIDE A RETAINING WALL OF THE DESIRED HEIGHT. THE TOP LAGGING SHALL BE 4"x12" IN ALL CASES.
3. LAGGING SHALL BE GAPPED WITH 1/4-INCH GALVANIZED STEEL SHIMS (NUTS MAY BE USED).
4. PATHWAY HEADERBOARD SHALL BE GROUND CONTACT PRESSURE TREATED TIMBER. CUT ENDS SHALL BE TREATED WITH PRESERVATIVE PRIOR TO ATTACHMENT TO FENCE POST.
5. REDWOOD SHALL BE CONSTRUCTION HEART GRADE OR BETTER AND TREATED WITH "CABOTS CLEAR SOLUTION" WATERSEALER PRIOR TO FABRICATION
6. FENCE RAILS SHALL BE ATTACHED WITH 3/8" CARRIAGE BOLTS WITH A PLAIN WASHER. RECESS BOLT HEADS FLUSH WITH THE RAIL.



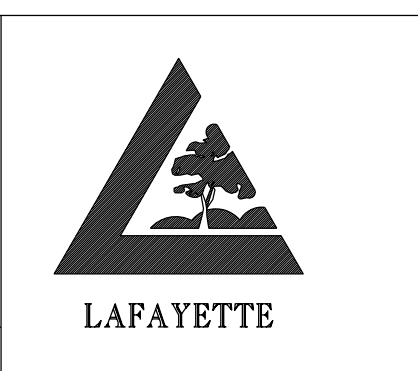
A
4 NTS TYPICAL SECTION WITH RETAINING WALL

B
4 NTS TYPICAL SECTION WITHOUT RETAINING WALL

| DATE | MARK | REVISION | INIT. |
|------|------|----------|-------|
| | | | |
| | | | |
| | | | |
| | | | |
| | | | |
| | | | |
| | | | |

Designed by:
 Drawn by:
 Checked by:
 Reviewed by:
 Date:

SIGN: _____ DATE: _____

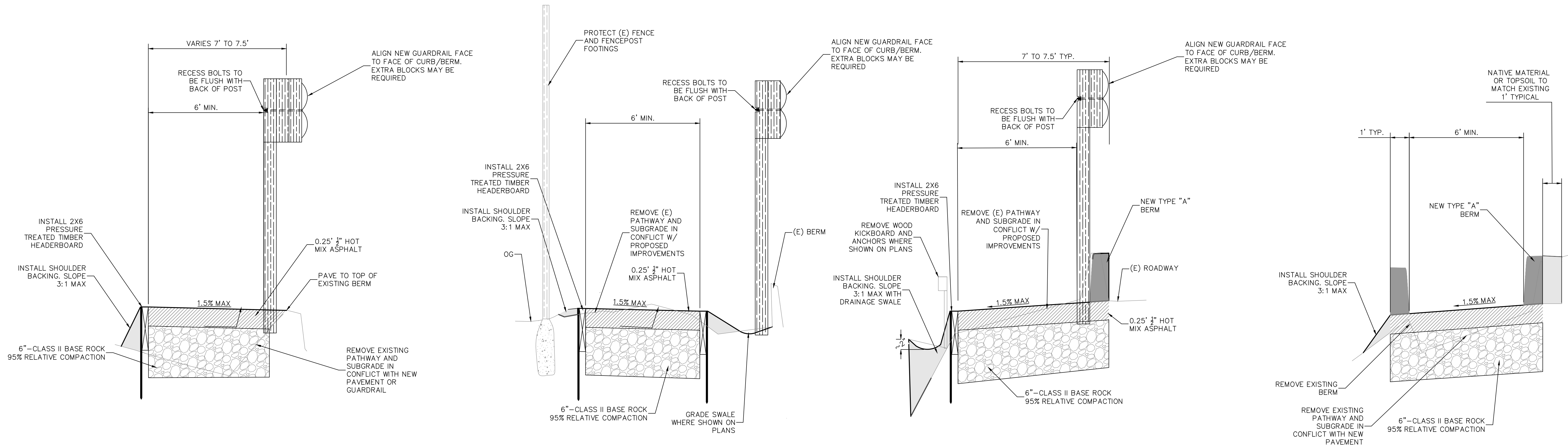


3675 Mount Diablo Boulevard, Suite 210
 Lafayette, California, 94549-1968
 (925) 299-3217 Fax (925) 284-3169
 www.ci.lafayette.ca.us

REVIEWED BY:
 CITY OF LAFAYETTE

CITY OF LAFAYETTE
 PROJECT NO. 014-9737
 2023 PATHWAY PROJECT
 CONTRA COSTA COUNTY CALIFORNIA

RELIEZ VALLEY ROAD
 TYPICAL SECTIONS
 SCALE: _____ NTS SHEET 5 of 14



1 PATHWAY TYPICAL SECTION
6 STA 10+20 TO 11+00

2 PATHWAY TYPICAL SECTION
6 STA 11+00 TO 14+00

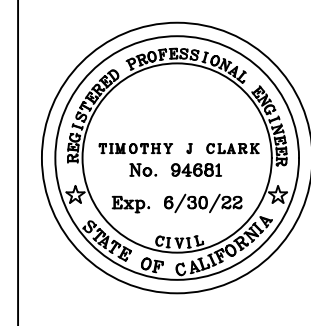
3 PATHWAY TYPICAL SECTION
6 STA 14+00 TO 15+00

4 PATHWAY TYPICAL SECTION
6 STA 15+00 TO 17+15

| DATE | MARK | REVISION | INIT. |
|------|------|----------|-------|
| | | | |
| | | | |
| | | | |
| | | | |

Designed by: TC
 Drawn by: TC
 Checked by: JML
 Reviewed by: MM
 Date: 3/31/2023

SIGN: _____
 DATE: 4/3/23



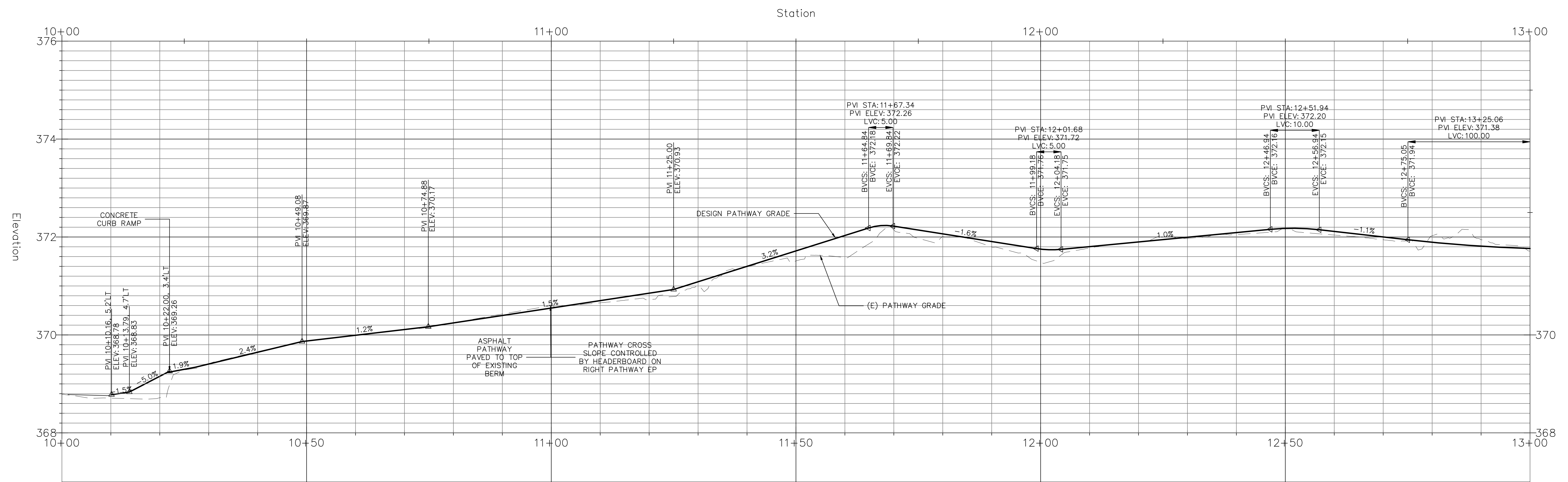
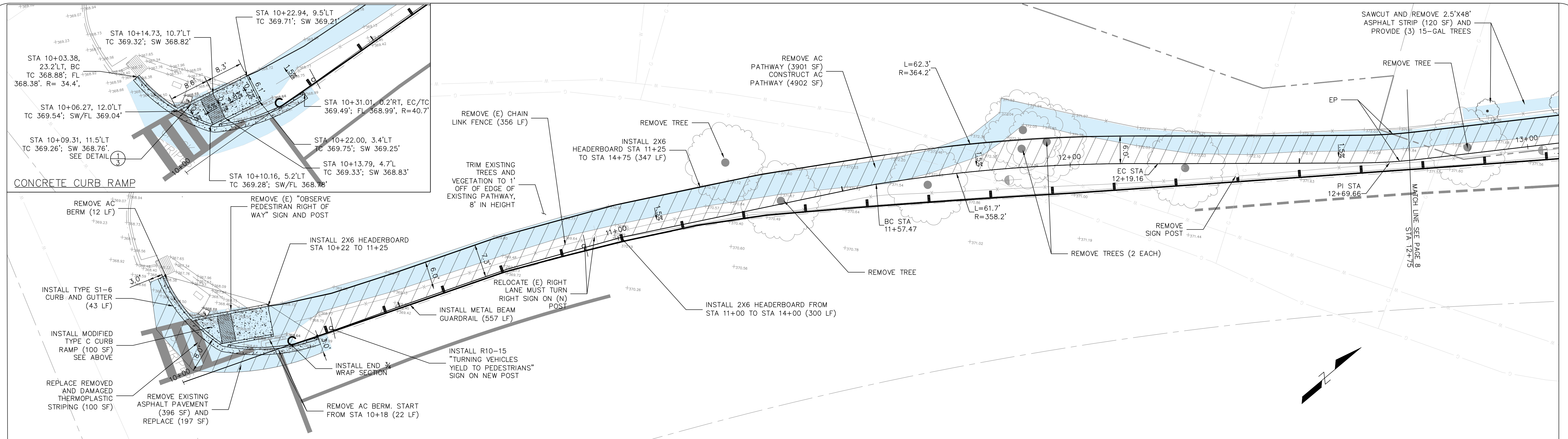
3675 Mount Diablo Boulevard, Suite 210
 Lafayette, California, 94549-1968
 (925) 299-3217 Fax (925) 284-3169
 www.ci.lafayette.ca.us

REVIEWED BY:
 CITY OF LAFAYETTE

 4/3/23
 MICHAEL MORAN, PUBLIC WORKS DIRECTOR

CITY OF LAFAYETTE
 PROJECT NO. 014-9737
 2023 PATHWAY PROJECT
 CONTRA COSTA COUNTY CALIFORNIA

PLEASANT HILL ROAD
 TYPICAL SECTIONS
 SCALE: NTS SHEET 6 of 14



| DATE | MARK | REVISION | INIT. |
|------|------|----------|-------|
| | | | |
| | | | |
| | | | |
| | | | |

Designed by: TC
 Drawn by: TC
 Checked by: JM
 Reviewed by: MM
 Date: 3/31/2023

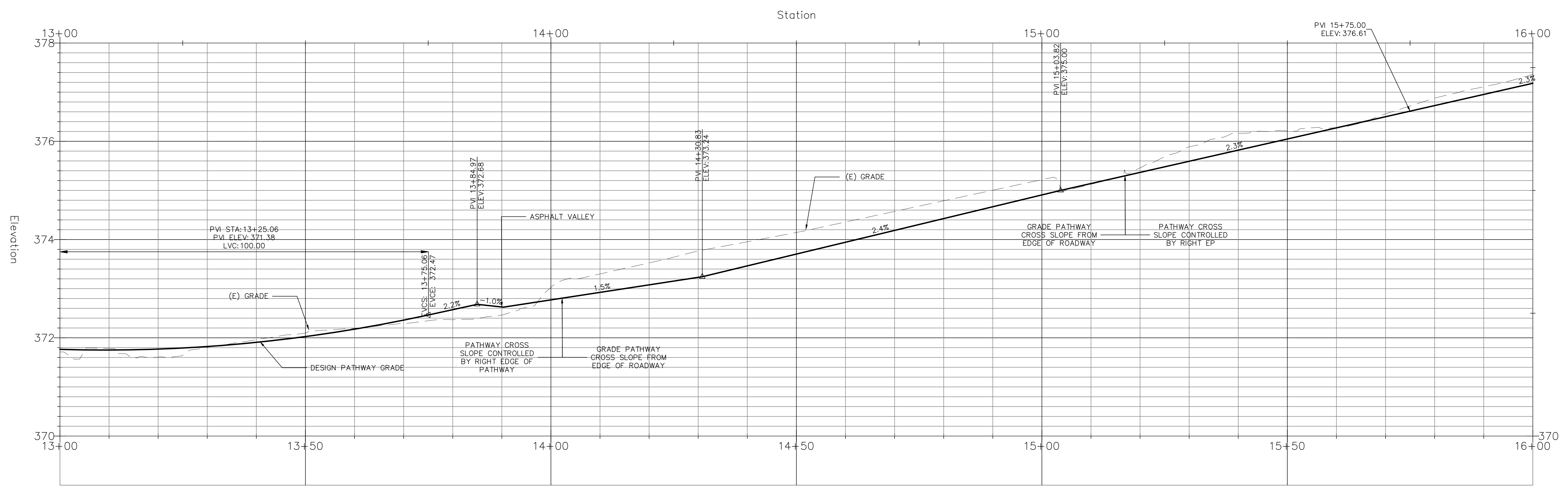
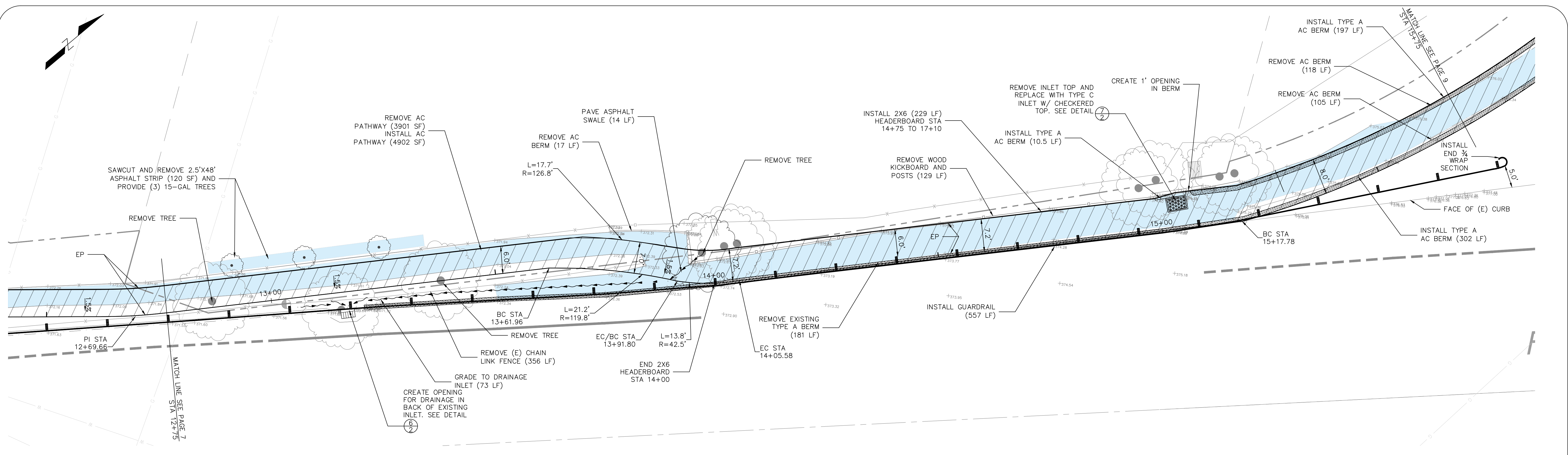
SIGN: DATE: 4/3/2023

3675 Mount Diablo Boulevard, Suite 210
 Lafayette, California, 94549-1968
 (925) 299-3217 Fax (925) 284-3169
 www.ci.lafayette.ca.us

REVIEWED BY:
 CITY OF LAFAYETTE
 MICHAEL MORAN, PUBLIC WORKS DIRECTOR
 4/3/2023

CITY OF LAFAYETTE
 PROJECT NO. 014-9737
 2023 PATHWAY PROJECT
 CONTRA COSTA COUNTY CALIFORNIA

PLEASANT HILL ROAD
 PLAN AND PROFILE
 SCALE: H: 1"=10', V: 1"=1' SHEET 7 of 14



| DATE | MARK | REVISION | INIT. |
|------|------|----------|-------|
| | | | |
| | | | |
| | | | |
| | | | |
| | | | |

Designed by: TC
 Drawn by: TC
 Checked by: JM
 Reviewed by: MM
 Date: 3/31/2023

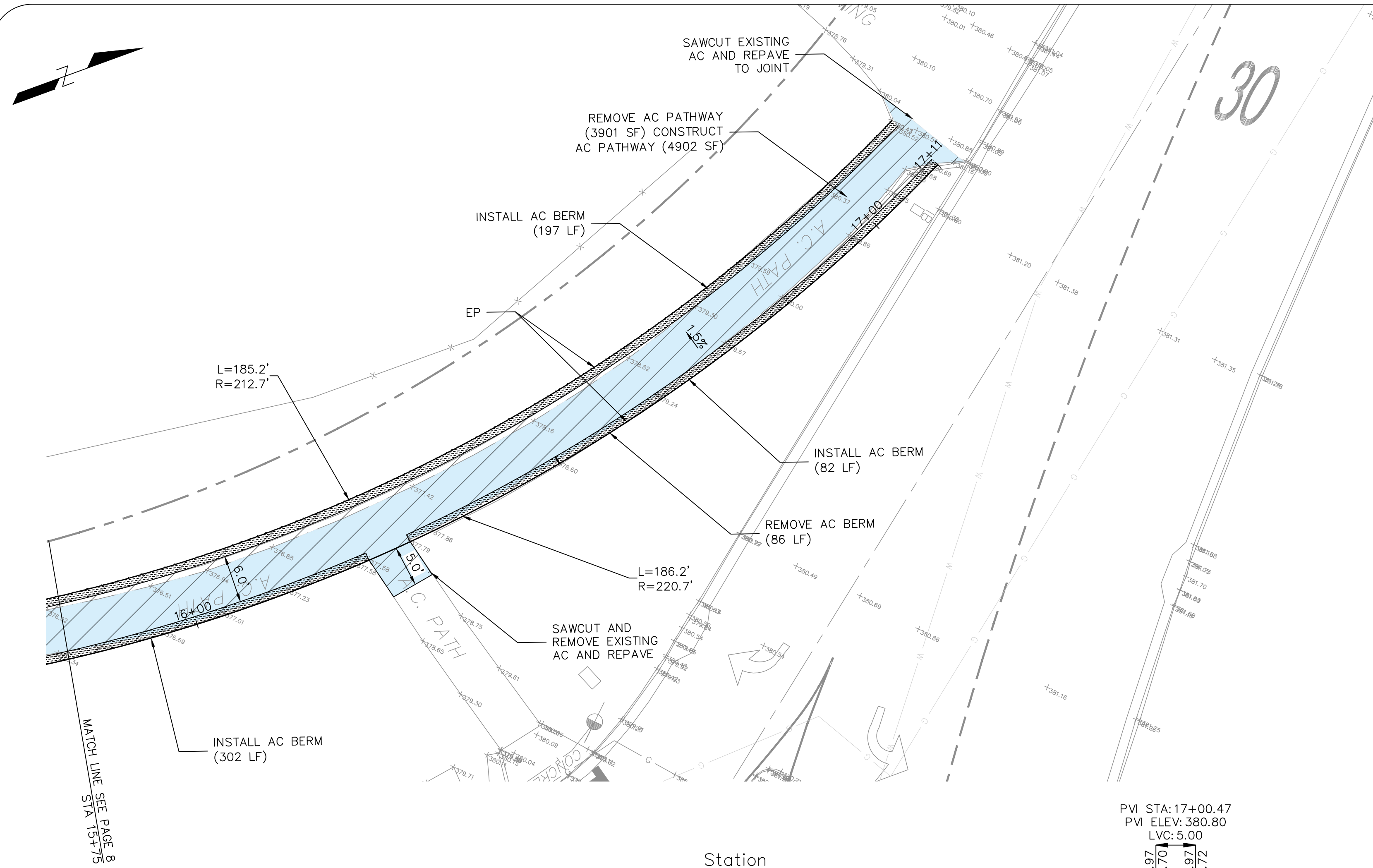
SIGN: _____ DATE: 4/3/2023

3675 Mount Diablo Boulevard, Suite 210
 Lafayette, California, 94549-1968
 (925) 299-3217 Fax (925) 284-3169
 www.ci.lafayette.ca.us

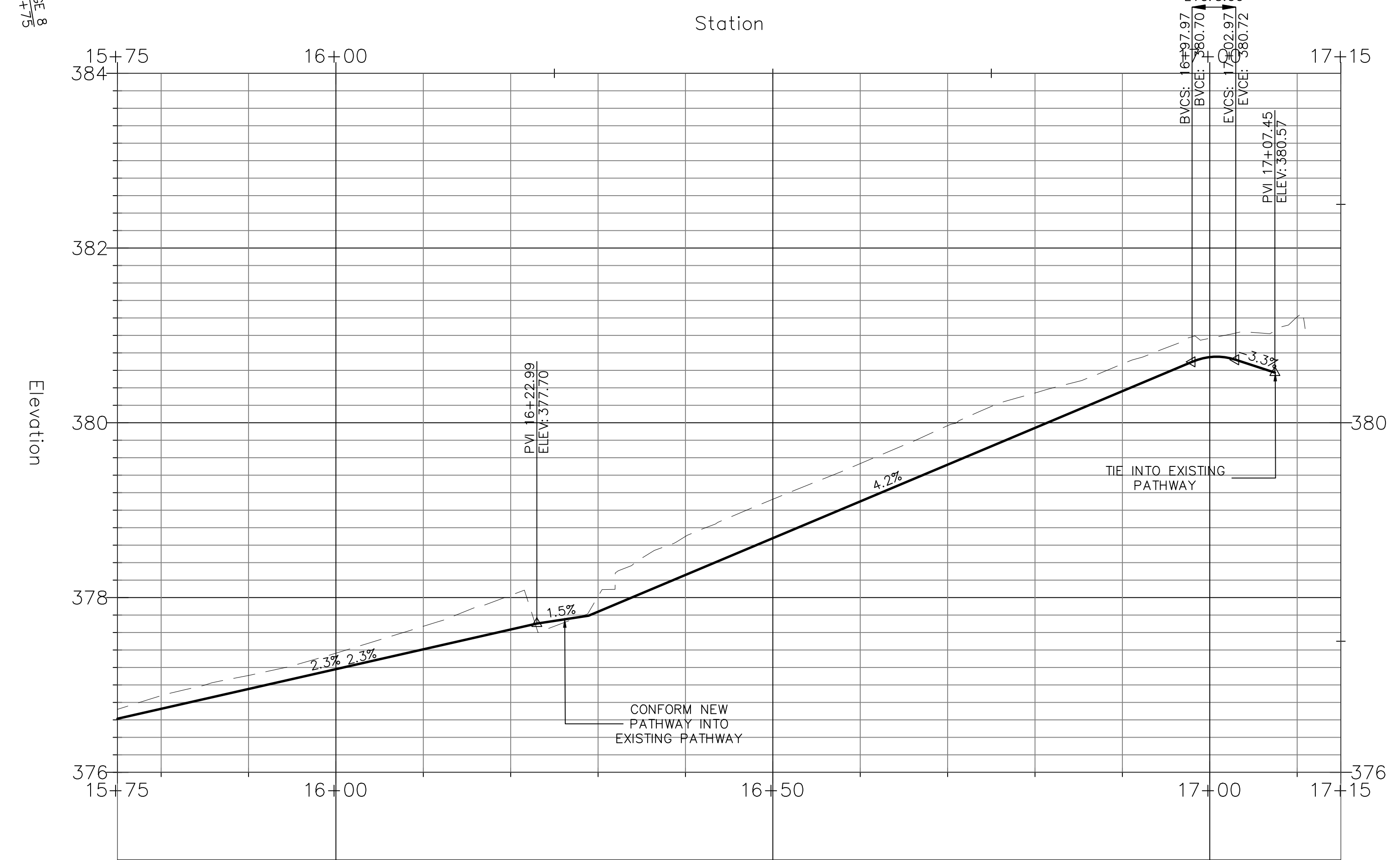
REVIEWED BY:
 CITY OF LAFAYETTE
 MICHAEL MORAN, PUBLIC WORKS DIRECTOR
 4/3/2023

CITY OF LAFAYETTE
 PROJECT NO. 014-9737
 2023 PATHWAY PROJECT
 CONTRA COSTA COUNTY CALIFORNIA

PLEASANT HILL ROAD
 PLAN AND PROFILE
 SCALE: H: 1"=10', V: 1"=1' SHEET 8 of 14



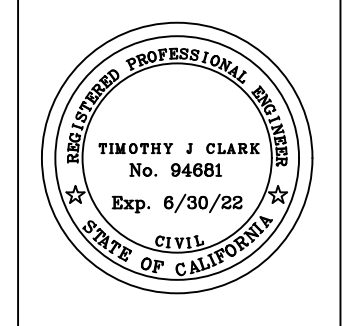
PVI STA: 17+00.47
 PVI ELEV: 380.80
 LVC: 5.00



| DATE | MARK | REVISION | INIT. |
|------|------|----------|-------|
| | | | |
| | | | |
| | | | |
| | | | |

Designed by: TC
 Drawn by: TC
 Checked by: JM
 Reviewed by: MM
 Date: 3/31/2023

SIGN: _____
 DATE: 4/3/2023



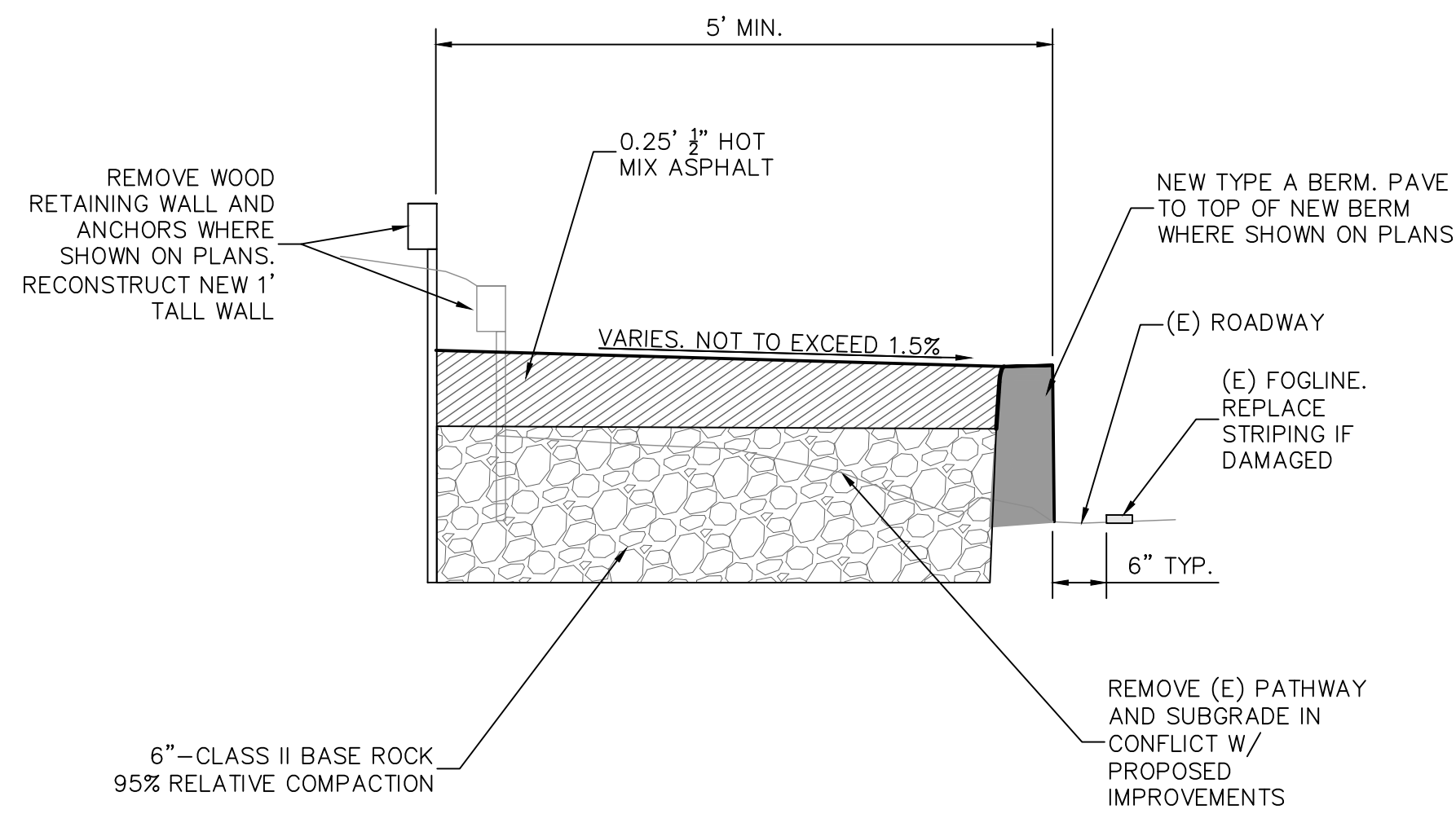
3675 Mount Diablo Boulevard, Suite 210
 Lafayette, California, 94549-1968
 (925) 299-3217 Fax (925)284-3169
 www.ci.lafayette.ca.us

REVIEWED BY:
 CITY OF LAFAYETTE

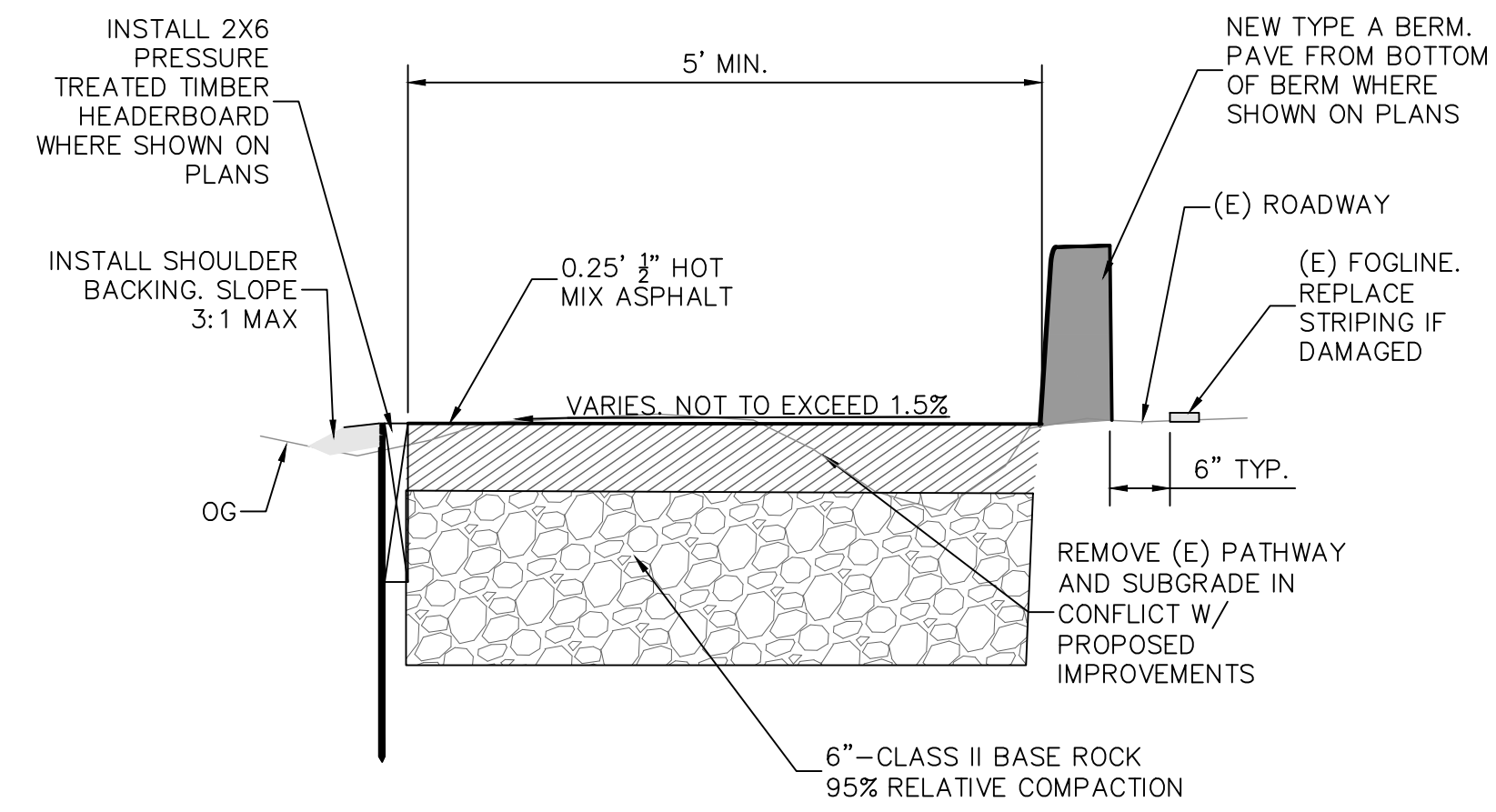
 MICHAEL MORAN, PUBLIC WORKS DIRECTOR
 4/3/2023

CITY OF LAFAYETTE
 PROJECT NO. 014-9737
 2023 PATHWAY PROJECT
 CONTRA COSTA COUNTY CALIFORNIA

PLEASANT HILL ROAD
 PLAN AND PROFILE
 SCALE: H: 1"=10', V: 1"=1'
 SHEET 9 of 14



1
10 PATHWAY TYPICAL SECTION

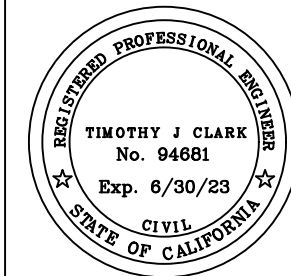


2
10 PATHWAY TYPICAL SECTION

| DATE | MARK | REVISION | INIT. |
|------|------|----------|-------|
| | | | |
| | | | |
| | | | |
| | | | |

Designed by: TC
 Drawn by: TC
 Checked by: JML
 Reviewed by: MM
 Date: 3/30/2023

SIGN: _____
 DATE: 4/3/23



LAFAYETTE

3675 Mount Diablo Boulevard, Suite 210
 Lafayette, California, 94549-1968
 (925) 299-3217 Fax (925)284-3169
 www.ci.lafayette.ca.us

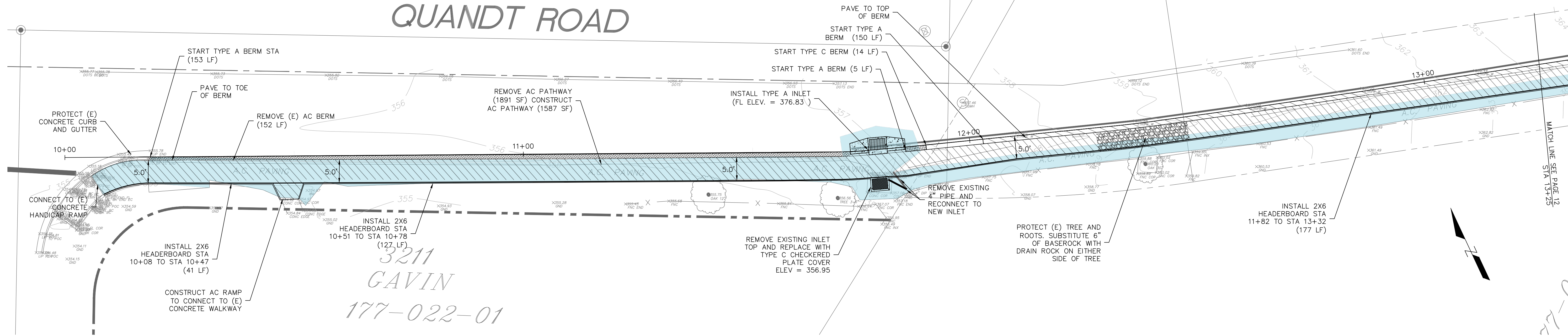
REVIEWED BY:
 CITY OF LAFAYETTE

 MICHAEL MORAN, PUBLIC WORKS DIRECTOR

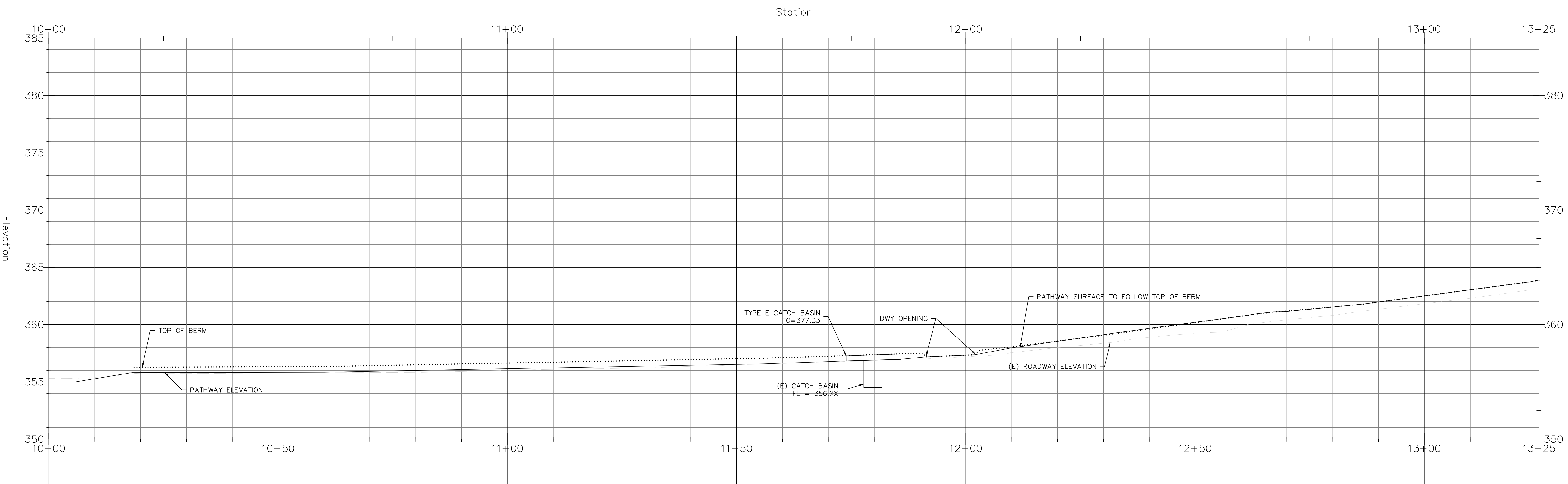
CITY OF LAFAYETTE
 PROJECT NO. 014-9737
 2023 PATHWAY PROJECT
 CONTRA COSTA COUNTY CALIFORNIA

QUANDT DRIVE TYPICAL SECTIONS
 SCALE: NTS _____ SHEET 10 of 14

QUANDT ROAD



3211
GAVIN
177-022-01



| DATE | MARK | REVISION | INIT. |
|------|------|----------|-------|
| | | | |
| | | | |
| | | | |
| | | | |

Designed by: TC
 Drawn by: TC
 Checked by: JML
 Reviewed by: MM
 Date: 3/30/2023

SIGN: _____ DATE: 4/3/23

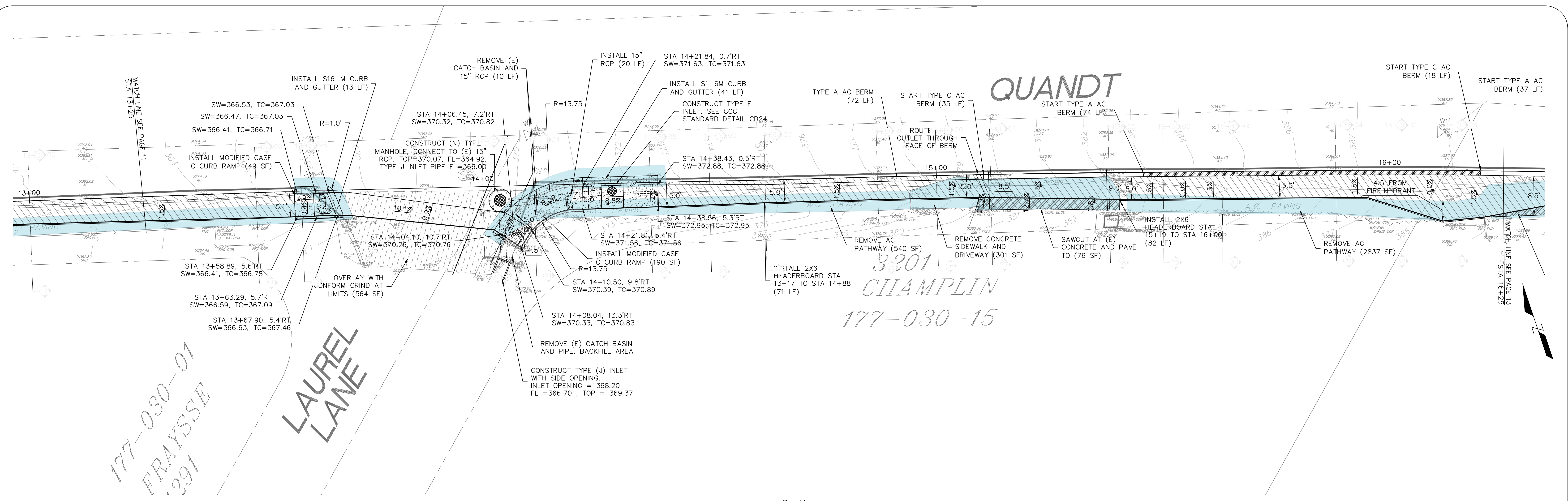


3675 Mount Diablo Boulevard, Suite 210
 Lafayette, California, 94549-1968
 (925) 299-3217 Fax (925)284-3169
 www.ci.lafayette.ca.us

REVIEWED BY:
 CITY OF LAFAYETTE
 MICHAEL MORAN, PUBLIC WORKS DIRECTOR
 4/3/23

CITY OF LAFAYETTE
 PROJECT NO. 014-9737
 2023 PATHWAY PROJECT
 CONTRA COSTA COUNTY CALIFORNIA

QUANDT DRIVE PLAN AND PROFILE
 SCALE: H:1"=10', V:1"=1' SHEET 11 of 14

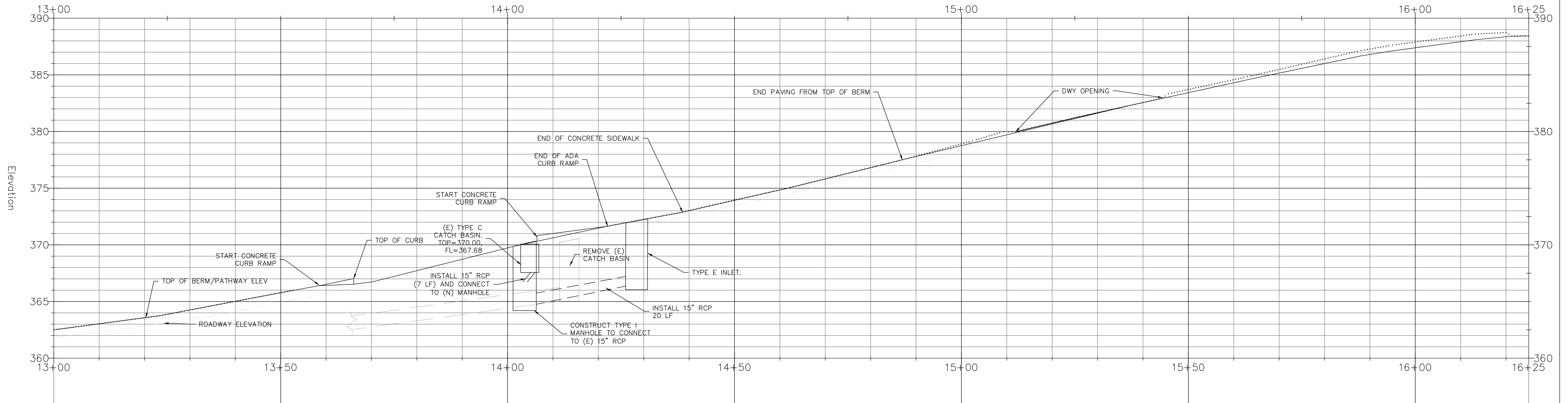


177-030-01
FRAYSSE
291

LAUREL LANE

3201
CHAMPLIN
177-030-15

Station



| DATE | MARK | REVISION | INIT. |
|------|------|----------|-------|
| | | | |
| | | | |
| | | | |
| | | | |

Designed by: TC
 Drawn by: TC
 Checked by: JM
 Reviewed by: MM
 Date: 3/30/2023

SIGN: _____ DATE: 3/30/23

3675 Mount Diablo Boulevard, Suite 210
 Lafayette, California, 94549-1968
 (925) 299-3217 Fax (925)284-3169
 www.ci.lafayette.ca.us

REVIEWED BY:
 CITY OF LAFAYETTE

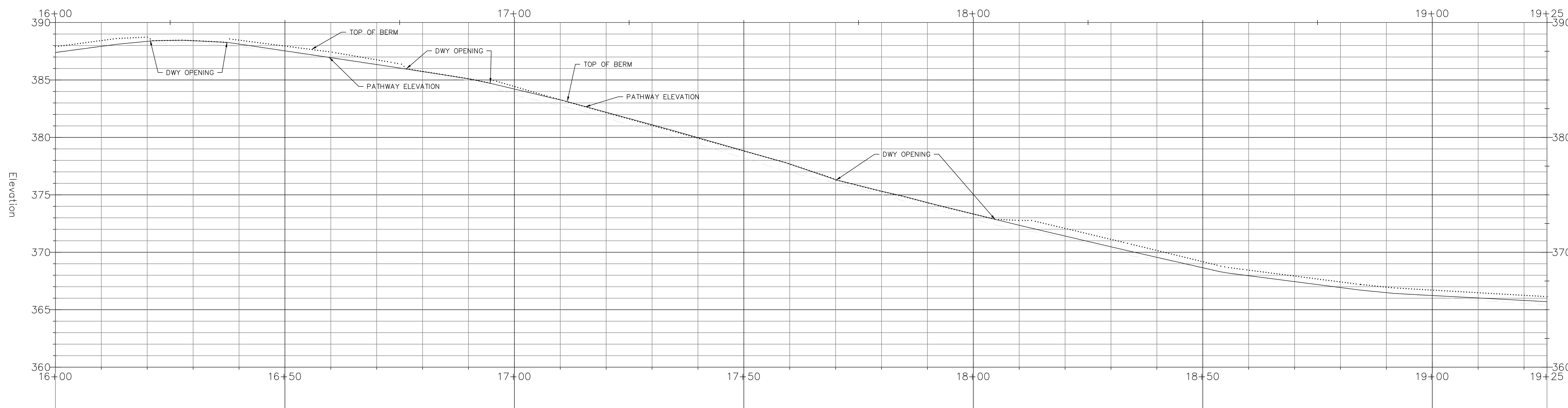
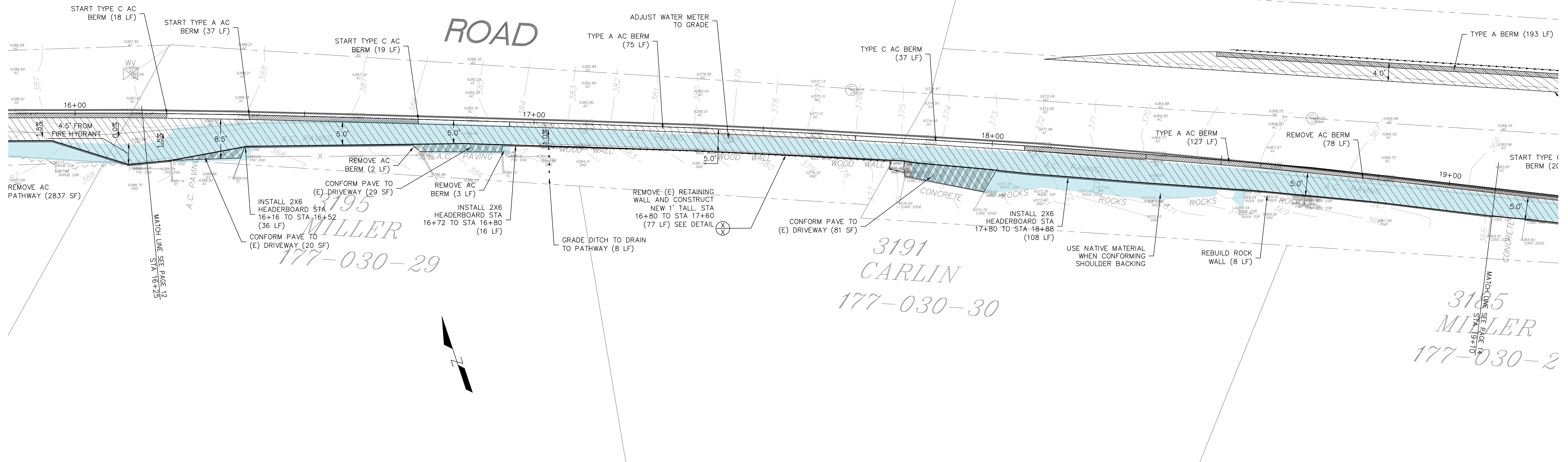
 3/30/23
 MICHAEL MORAN, PUBLIC WORKS DIRECTOR

CITY OF LAFAYETTE
 PROJECT NO. 014-9737
 2023 PATHWAY PROJECT

CONTRA COSTA COUNTY CALIFORNIA

QUANDT DRIVE PLAN AND PROFILE

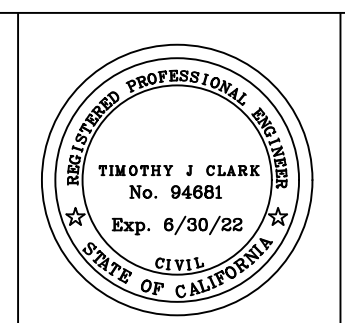
SCALE: H: 1"=10', V: 1"=1' SHEET 12 of 14



| DATE | MARK | REVISION | INIT. |
|------|------|----------|-------|
| | | | |
| | | | |
| | | | |
| | | | |

Designed by: TC
 Drawn by: TC
 Checked by: JML
 Reviewed by: MM
 Date: 3/30/2023

SIGN: _____
 DATE: 4/3/23



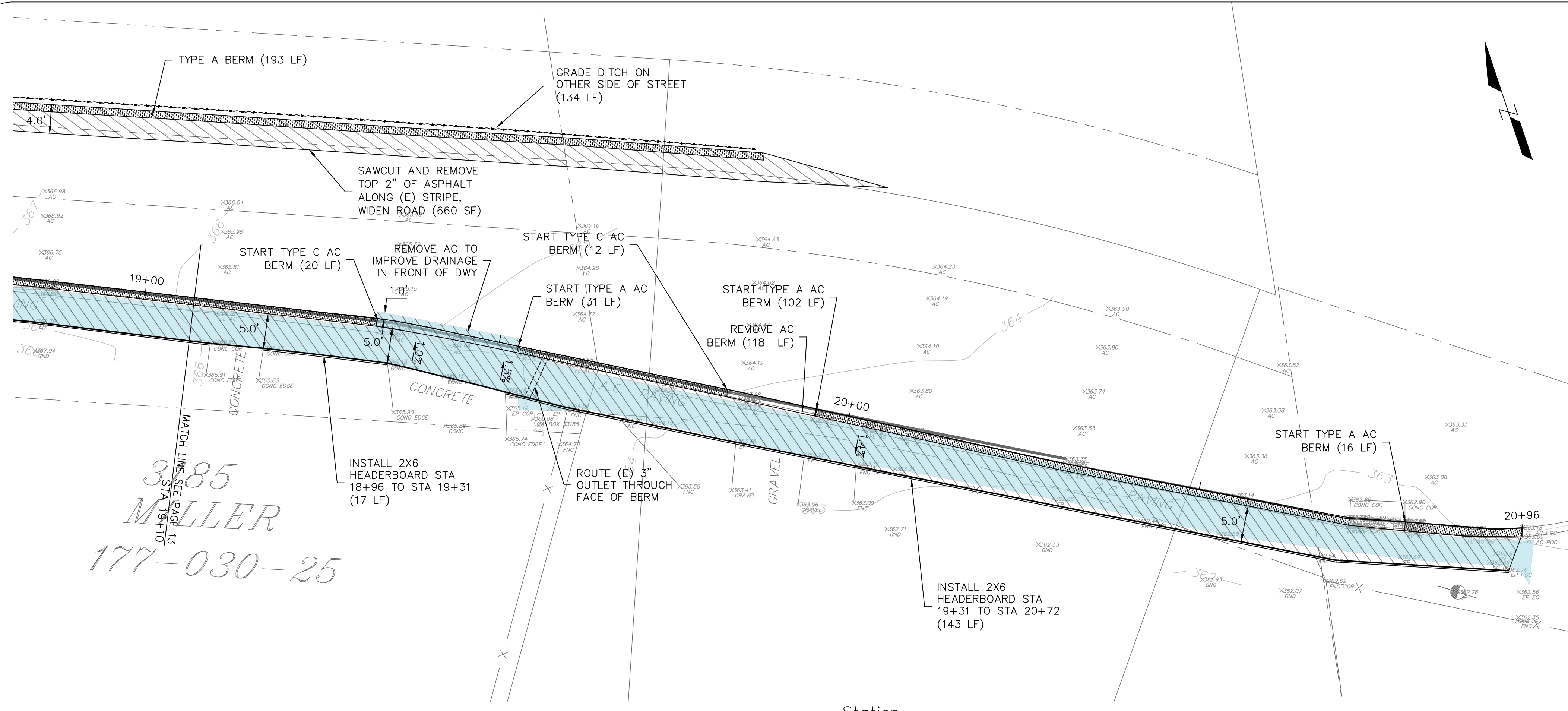
3675 Mount Diablo Boulevard, Suite 210
 Lafayette, California, 94549-1968
 (925) 299-3217 Fax (925)284-3169
 www.ci.lafayette.ca.us

REVIEWED BY:
 CITY OF LAFAYETTE

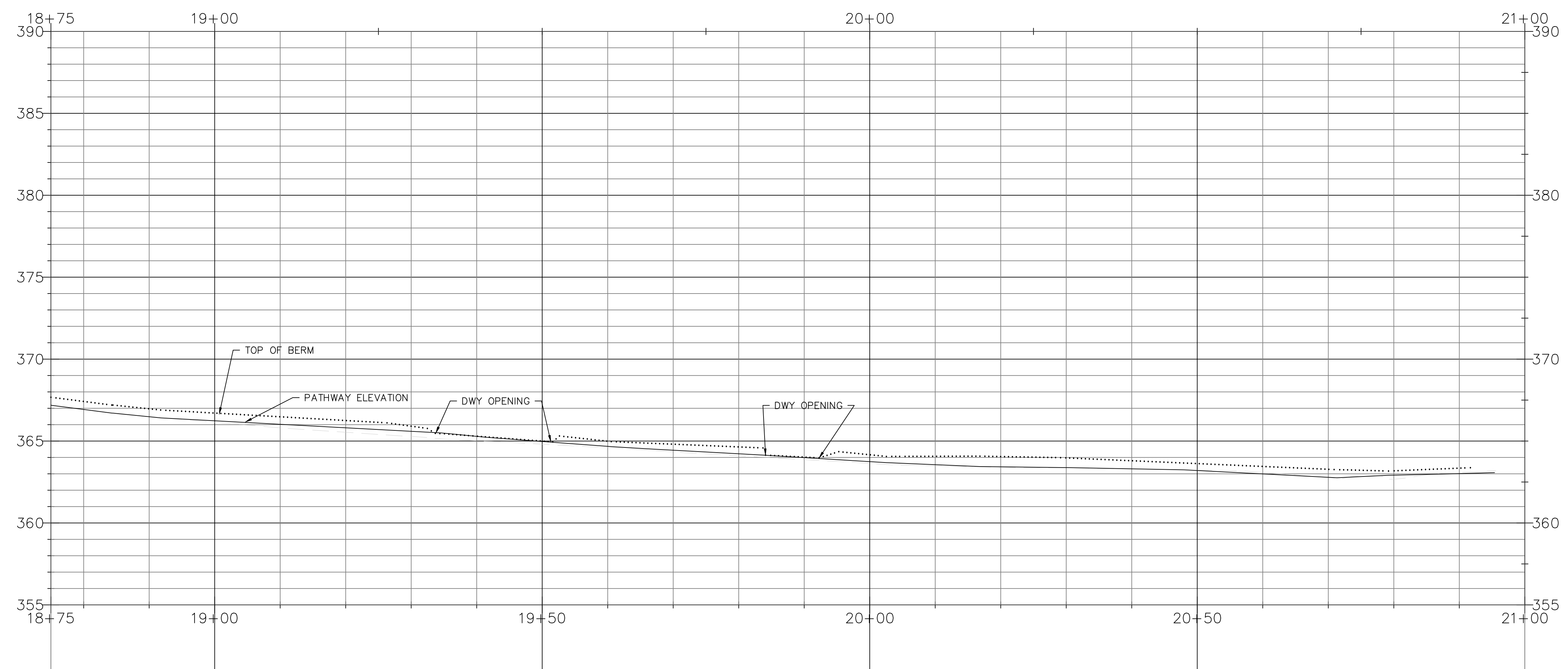
 MICHAEL MORAN, PUBLIC WORKS DIRECTOR
 4/3/23

CITY OF LAFAYETTE
 PROJECT NO. 014-9737
 2023 PATHWAY PROJECT
 CONTRA COSTA COUNTY CALIFORNIA

QUANDT DRIVE PLAN AND PROFILE
 SCALE: H:1"=10', V:1"=1'
 SHEET 13 of 14



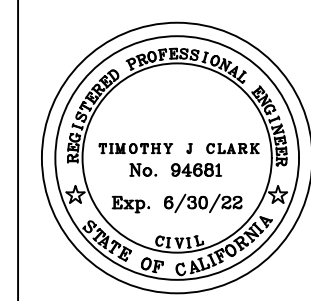
385 MILLER
177-030-25



| DATE | MARK | REVISION | INIT. |
|------|------|----------|-------|
| | | | |
| | | | |
| | | | |
| | | | |

Designed by: TC
 Drawn by: TC
 Checked by: JML
 Reviewed by: MM
 Date: 3/30/2023

SIGN: _____
 DATE: 4/3/23



3675 Mount Diablo Boulevard, Suite 210
 Lafayette, California, 94549-1968
 (925) 299-3217 Fax (925)284-3169
 www.ci.lafayette.ca.us

REVIEWED BY:
 CITY OF LAFAYETTE

 MICHAEL MORAN, PUBLIC WORKS DIRECTOR
 4/3/23

CITY OF LAFAYETTE
 PROJECT NO. 014-9737
 2023 PATHWAY PROJECT
 CONTRA COSTA COUNTY CALIFORNIA

QUANDT DRIVE PLAN AND PROFILE
 SCALE: H:1"=10', V:1"=1'
 SHEET 14 of 14