

SWELL

Summer Wellness Center for 6th–12th Grade Students

Lafayette Library and Learning Center Foundation
and City of Lafayette Partnership Pilot Program
in Library Café Space
Update from First Week

Move in Day: Friday, June 3

- ▶ 22 Minutes, 3 Women, 2 Cars
- ▶ 12 Minutes to Unload at Library
- ▶ 50 Minutes to Set Up in Center



SWELL Shopping Trip Saturday (after Community Day)

- ▶ Paper Products, Snacks, Drinks, Art Supplies



Opening Day Monday, June 6 with Volunteer Teen Staff

Leadership Teen Staff:

- Set Up Games, Crafts, Created Signage, and Designed Flyer—all on Opening Day. They also enjoyed lunch from Batch & Brine all week!



Volunteer
Teen Staff
independently
created a flyer
after Opening
Day and
walked in
teams to post
them in local
businesses.

*are you in middle or high school?
come hang out at*

SWELL!

summer weekdays 11-2, Lafayette Library Café

- *free snacks & drinks*
- *free outdoor games*
 - *air hockey*
 - *ping pong*
 - *giant jenga*
- *social support from other teens*
- *crafts & activities*
 - *succulent planting*
 - *jewelry making*
 - *board games*
- *grab a free lunch*

just drop in!

bneedel@llcf.org
jwakeman@lovelafayette.org



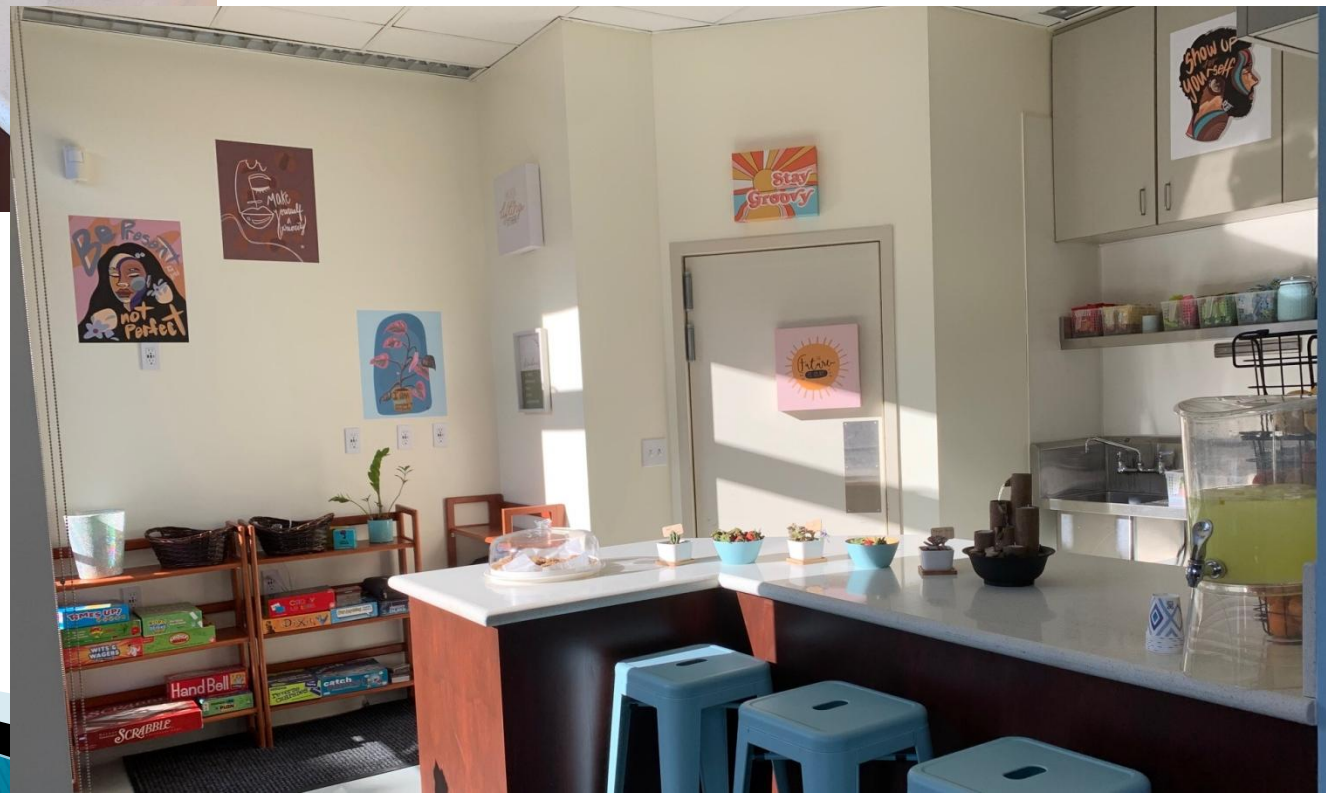
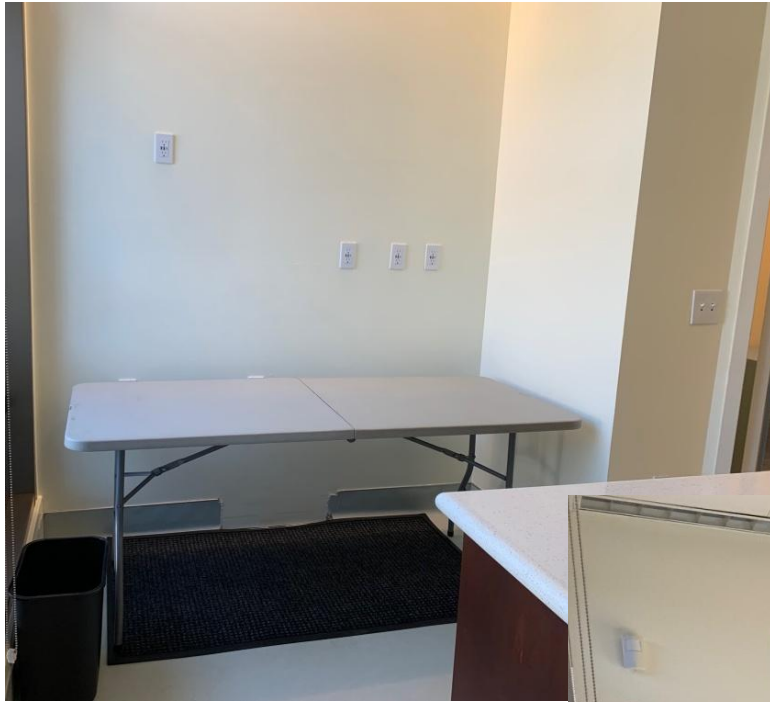
Before and After: SWELL Right



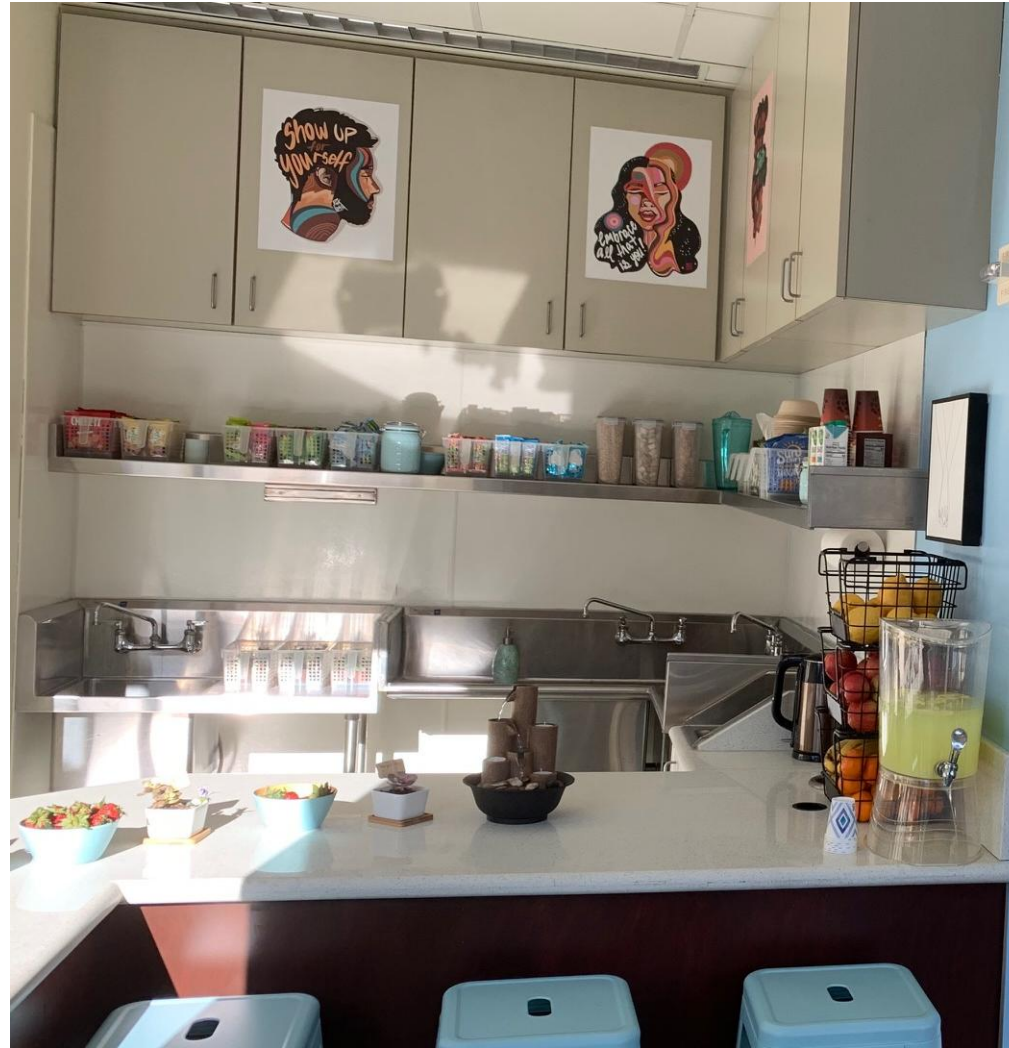
Before and After: SWELL Right



Before and After: SWELL Left



Before and After: SWELL Center



Before and After: SWELL Center



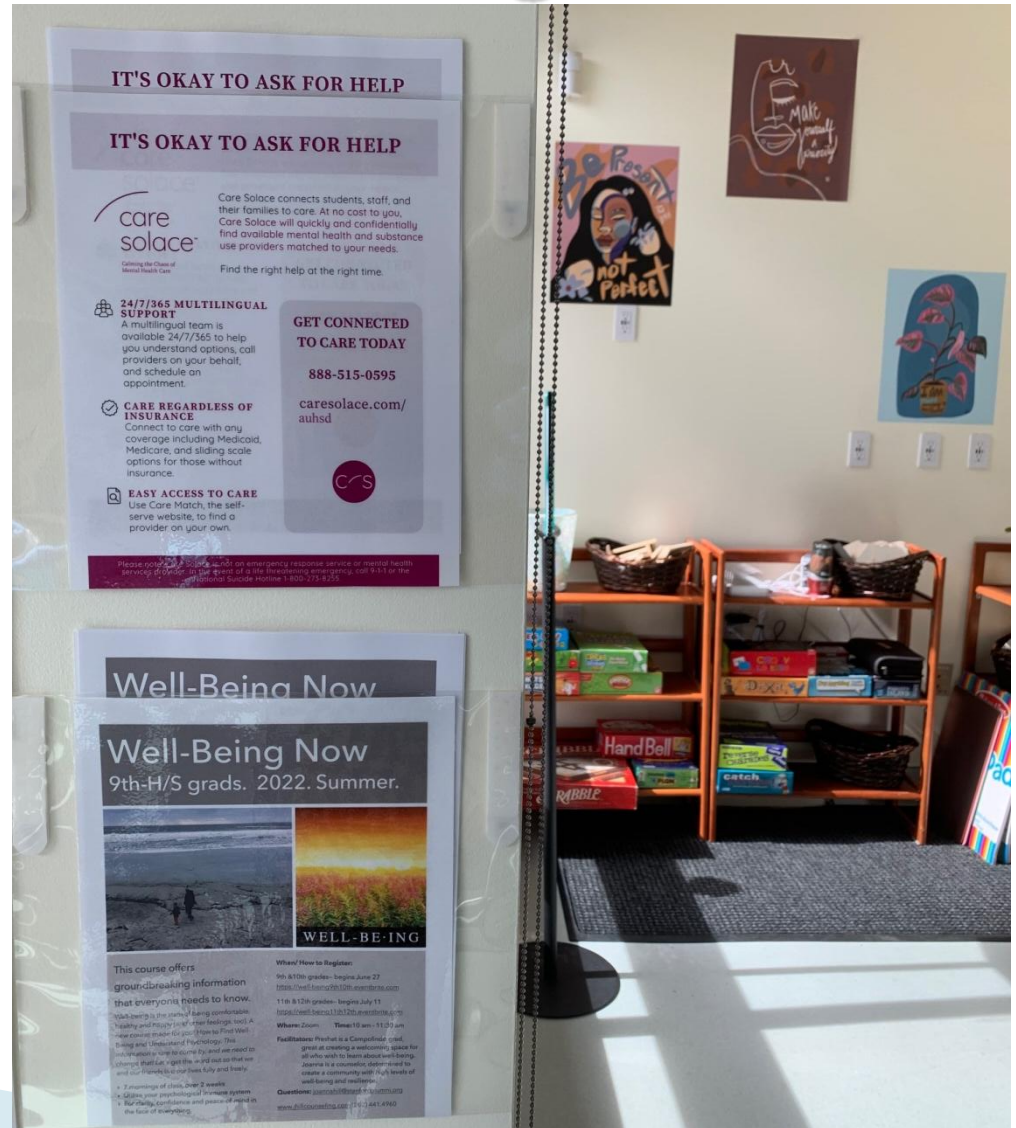
Art Chosen to Appeal to Teens



Chief Aldritt, Lafayette Police, and Batch & Brine Donated to Successful Launch



Wellness Resources and Teen Feedback are Part of Program



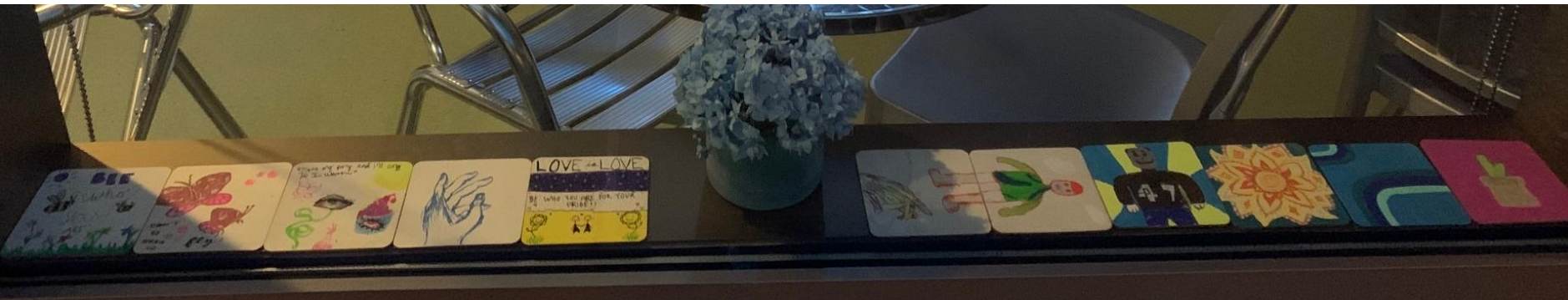
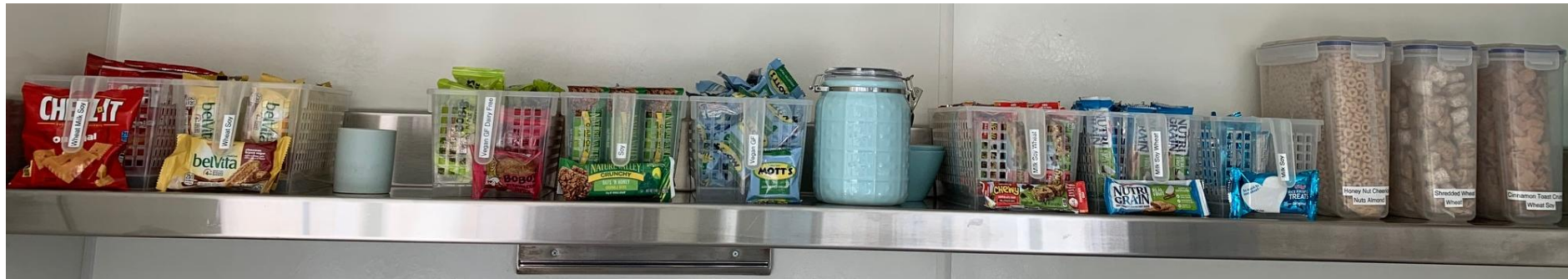
Teens are Getting Involved in Community Causes

- ▶ Example:
Teens are planting succulents with positive messages for the Cancer Support Community



Visiting Teens are Included in Designing Center

- ▶ Middle schooler suggested great idea to label food contents
- ▶ All teen visitors are encouraged to paint a tile for a mosaic art display inside center



Teen Leaders Play Games, Create Art, and Socialize with Visitors

- ▶ Some teens visit every day
- ▶ New ways to play and communicate are being learned daily



Daily Teen Visitors – Week 1

- ▶ Monday: 12 Teen Visitors, 3 Teen Volunteers
- ▶ Tuesday: 16 Teen Visitors, 4 Teen Volunteers
 - 14 “New”, 2 “Repeats”
- ▶ Wednesday: 18 Teen Visitors, 4 Teen Volunteers
 - 7–10th grade
 - 10 “New”, 8 “Repeats”
- ▶ Thursday: 23 Teen Visitors, 4 Teen Volunteers
 - 7–11th grade
 - 12 “New”, 11 “Repeat”
- ▶ Friday: 17 Teen Visitors, 5 Teen Volunteers
 - 6–12th grade
 - 8 “New”, 9 “Repeat”
 - Impressive for 98 degree day, considering teens are walking/hiking to SWELL.

City Council, Thank You for Your Support!

- ▶ Stop by 2–3pm M–F for a Quick Tour

