

CITY OF LAFAYETTE  
PUBLIC ART COLLECTION  
AT THE LAFAYETTE LIBRARY AND LEARNING CENTER

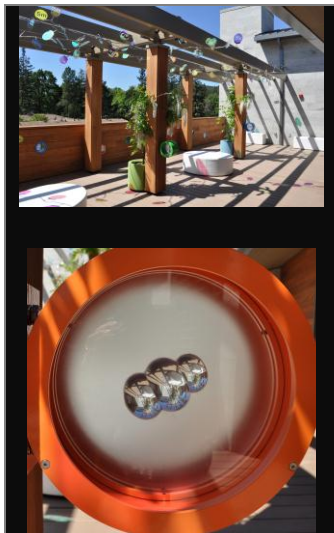


**Brian Goggin**  
San Francisco  
  
*Speechless*  
Bronze, 2009

Completed many commissioned works of public art, including in Sunnyvale, Menlo Park, Emeryville, and San Francisco.

Completed a similar work to *Speechless* in San Francisco comprised of illuminated books hung to look like flying birds. This work won an Americans for the Arts award for Best Public Art of 2008.

[www.metaphorm.org](http://www.metaphorm.org)



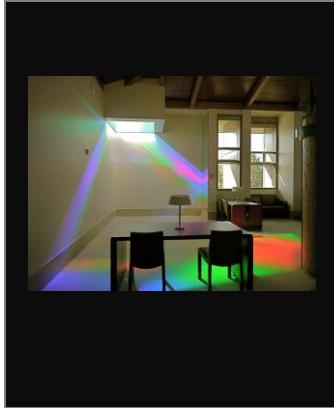
**Kana Tanaka**  
Richmond  
  
*Optical Streams - Part 1 & 2*  
Laminated diachronic glass disks, stainless steel, glass, Plexiglas, 2009

Born in Japan. Received MFA in glass from Rhode Island School of Design.

Exhibited work throughout the United States and internationally.

Worked on many public art projects, including projects in Scottsdale, Davis, Sacramento, and San Francisco.

[www.kanatanaka.com](http://www.kanatanaka.com)



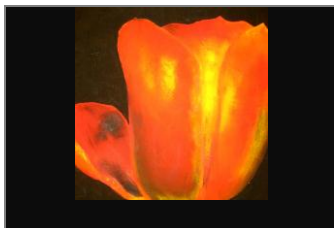
**Peter Erskine**  
Corvallis

***Sun Painting***  
Sunlight, laser cut prisms,  
mirrors, 2009

Started career with site-specific architectural sculpture. Exhibited throughout the United States and Europe, including at the Whitney Museum Sculpture Biennial.

In late 1980s, invented the idea of interactive solar spectrum art. Pieces have been completed throughout Europe and the United States.

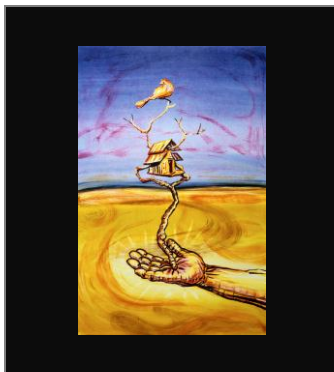
[www.erskinesolarart.net](http://www.erskinesolarart.net)



**Carolyn Ahr**  
Lafayette

***Orange Tulip***  
Oil, 2007

Graduate of Campolindo High School.



**Michael Almaguer**  
Orinda

***Balance***  
Monoprint, 2003

Exhibited in galleries and museums nationally and internationally over the past 20 years, including SFMOMA.

Dean of the Fine Arts Division at Diablo Valley College (2008-present), and faculty member, Diablo Valley College (1990-present).

[www.mainsite-art.com/almaguer2008](http://www.mainsite-art.com/almaguer2008)



**Suzy Barnard**  
San Francisco

***Surrounded by Blue***  
Oil on wood panel, 2009

Born in England. Exhibited in galleries in the San Francisco Bay Area and England since 1979, including SFMOMA and Limn Gallery

*San Francisco painter Suzy Barnard paints what she sees, from the windows of her Hunters Point studio. The bay, sky, horizon and shipping traffic provide her with ever-shifting opportunities to marry the values of abstract painting and description.*

– Kenneth Baker, SF Chronicle art critic,  
February 15, 2009

[www.suzybarnard.com](http://www.suzybarnard.com)



**Robert Becker**  
Orinda

Trained and working as an architectural  
illustrator since 1986.

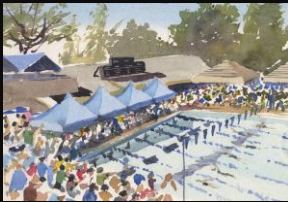
*Coaches*

Clients have included Bank of America,  
EDAW, Field Paoli, Heller Manus, Stanford  
University, UC Berkeley, UC Santa Barbara,  
and The Gap.

[www.robertbecker.com](http://www.robertbecker.com)



*Next Swimmer*



*Sleepy Hollow B Meet*



*Miramonte / Campolindo  
Football*



*Warm Ups - Soda Center*

Watercolors - Plein Air,  
2008-2009

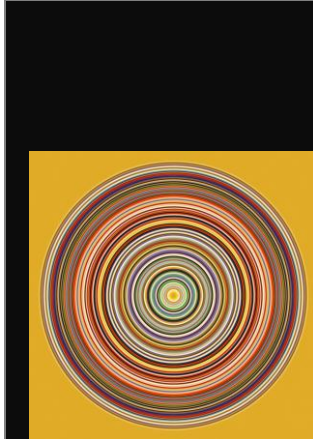


**Arlynn Bloom**  
Lafayette

*Resting*  
Watercolor, 2008

Exhibited in galleries in the San Francisco Bay Area and nationally since 1991.

[www.arlynnbloom.com](http://www.arlynnbloom.com)



**Lewis deSoto**  
Napa

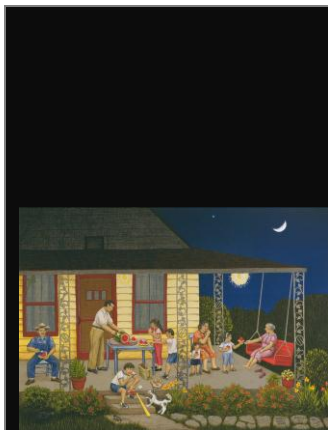
*KLS: Day at Kareno*  
Pigment on paper, 2007

The KLS series refers to Hermann Hesse's "Klingsor's Last Summer," a novel about a German painter.

Professor of Art, San Francisco State University, 1988–present.

Public art commissions include San Francisco International Airport, University of Texas, City of Oakland, and City of San Jose. Exhibited in galleries in Bay Area and nationally since 1994, including San Jose Institute of Contemporary Art, UCLA, and Los Angeles County Museum of Art

[www.briangrossfineart.com/artists/lidesoto](http://www.briangrossfineart.com/artists/lidesoto)



**Carmen Garza**  
San Francisco

*Sandia*  
Lithograph, 1997

Several major one-person exhibitions since 1991, including Hirshhorn Museum at the Smithsonian, Whitney Museum of Art, The Mexican Museum in San Francisco, and San Antonio Museum of Art.

Public art commissions include the San Francisco Water Department, The Federal Reserve Bank in Dallas, and San Francisco International Airport.

In 2007, the Los Angeles Unified School District approved the naming of new school in East Los Angeles the Carmen Lomas Garza Primary Center.

[www.carmenlomasgarza.com](http://www.carmenlomasgarza.com)



**Linda Gass**  
Los Altos

***On the Edge***  
Hand painted silk,  
batting, thread, 2008

Aerial landscape of San Francisco Bay wetlands.

Exhibited nationally since 1997, including in textile and quilt exhibitions.

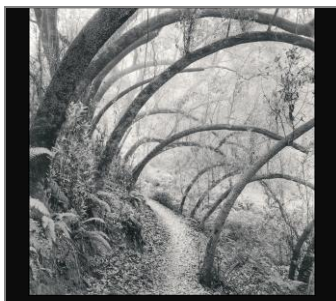
[www.lindagass.com](http://www.lindagass.com)



**Sarah Gross**  
Lafayette

***Mechanical Beetle***  
Graphite and Prismacolor,  
2009

Exhibited in Bay Area galleries since 1985, including The Oakland Museum, Bedford Gallery, and Fioli Gallery.



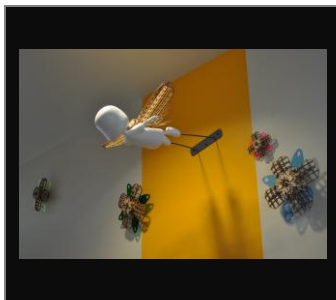
**Rolfe Horn**  
Oakland

***Along Huckleberry Path, Study 14, Oakland Hills***  
Toned gelatin silver print,  
2006

Grew up in Lafayette.

Exhibited internationally since 1996, including Weston Gallery in Carmel, Santa Barbara Museum of Fine Arts, and Center for the Arts in Brussels.

[www.f45.com](http://www.f45.com)




**Joyce Hsu**  
San Francisco


***Flying Girl with Flowers***  
Resin, wood, acrylic,  
metal, 2006

Exhibited internationally since 1998, including Bedford Gallery, Venice Biennial, Hong Kong Museum of Art, and Yerba Buena Center of the Arts.

Public art commissions include Walnut Creek Library, San Francisco International Airport, and 2004 Olympic Art Competition.

	<p><b>Amanda Hughen</b> San Francisco</p> <p><i><b>Fistulation</b></i> Ink, graphite, acrylic paint on drafting film, 2009</p>	<p>Visiting artist at Skidmore and Colby Colleges, an artist in residence at the de Young Museum, and a National Endowment for the Arts Scholar.</p> <p>Exhibited internationally in solo and group shows since 1997, including the Oakland Airport.</p> <p><a href="http://www.amandahughen.com">www.amandahughen.com</a></p>
---	--	--

	<p><b>Yan Inlow</b> Alameda</p> <p><i><b>Resting Woodpecker</b></i> Brush painting with hand embroidery, 2007</p>	<p>Learned embroidery from her mother and worked in an embroidery factory in China. Studied art in Japan. Her work combines the two styles.</p> <p>Exhibited in the San Francisco Bay Area since 1996, and is included in the Alameda County Art Commission collection.</p> <p><a href="http://www.yansdesign.com">www.yansdesign.com</a></p>
---	---	---

	<p><b>Cynthia Innis</b> Oakland</p> <p><i><b>Fathom</b></i> Mixed media on canvas, 2007</p>	<p>Exhibited throughout the United States since 1994. Her works are included in the collections of the Fine Arts Museums of San Francisco, San Jose Art Museum, Berkeley Art Museum, and the Microsoft Art Collection.</p> <p>Taught art classes at colleges including UC Berkeley, Diablo Valley College, and the San Francisco Art Institute.</p> <p><a href="http://www.cynthiaonainnis.com">www.cynthiaonainnis.com</a></p>
---	---	---





**Oliver Jackson**  
Oakland  
*Intaglio Print XVIII*  
Intaglio print, 2007

Taught classes in art, philosophy, and pan-African humanities at colleges including Southern Illinois University, Washington University in St. Louis, Oberlin College, and was a professor of Art at CSU, Sacramento for 31 years.

Exhibited artwork since 1963, including at the Seattle Art Museum, the Whitney Biennial of 1983, Museum of Modern Art, University Art Museum, Berkeley, SFMOMA, and Oakland Museum.

Works are included in the permanent collections of many museums including the Museum of Modern Art and Metropolitan Museum, New York; Museum of Fine Art, Boston; Seattle Art Museum; SFMOMA; and Fine Arts Museums of San Francisco.

[www.artistsforum.com/Jackson](http://www.artistsforum.com/Jackson)

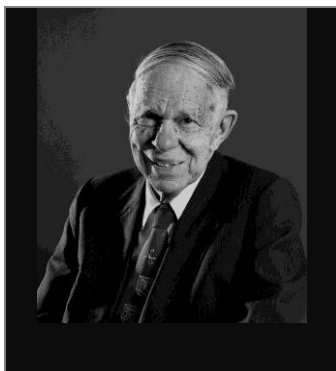


**Jeff Key**  
Oakland  
*Vessel #24 - Nesting*  
Wood, 2000

Exhibited throughout California and the western United States including the Bedford Gallery and SFMOMA's Artists Gallery.

Works are included in the collections of Netscape Communications, Clorox Corporation, and First Federal Bank of San Rafael.

[www.jeffmkey.com](http://www.jeffmkey.com)



**Malcolm Lubliner**  
Richmond  
*Glenn Seaborg portrait*  
Archival pigment print,  
1986

In 1986, on the suggestion of the National Portrait Gallery, took photos of Seaborg and models of his early experiments.

Works included in the collections of the National Portrait Gallery, SFMOMA, Oakland Museum, and Los Angeles County Museum of Art.

[www.cityvisions.com](http://www.cityvisions.com)



**Sonia Melnikova-Raich**  
San Francisco

***Morning Paper***



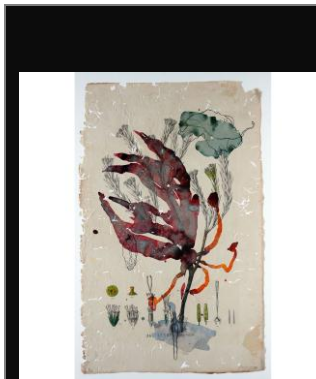
***Left Behind***

Original high-resolution  
photographs on archival  
Somerset Velvet Fine Art  
Paper, 2007

Born and trained as an architect and painter  
in Moscow, Russia.

Exhibited in California and the western  
United States, including at the Women Artists  
Gallery in San Francisco.

<http://art.soniamelnikova.com>



**Bob Nugent**  
Santa Rosa

***Flora Brasiliensis # 68***  
Watercolor, gouache, ink,  
conté on handmade  
paper, 2007

Professor Emeritus at Sonoma State  
University, and recipient of the National  
Endowment for the Arts Individual  
Fellowship.

Exhibited throughout the world, including  
Museum of Modern Art, Rio de Janeiro;  
Indianapolis Museum of Art; Oakland  
Museum; Hewlett Packard; Coca Cola  
Corporation; and Air France.

[www.eesgallery.com](http://www.eesgallery.com)



**Emily Payne**  
Berkeley

***Acres of Diamonds***  
Book covers and spines,  
glue, 2009

Public art commissions include Alameda  
County Arts Commission; Public Art  
Commission, Kaiser Permanente Hospital,  
Santa Clara; and Jefferson Elementary School,  
Berkeley.

Has exhibited throughout California,  
including SFMOMA's Artists Gallery.

[www.emilypayne.net](http://www.emilypayne.net)





**Sita Rupe**  
Oakland

***Puzzle Pieces***  
Wood, acrylic, silk screen  
, resin, 2009

Has exhibited in artwork galleries, featured on the cover and inside of magazines including 7x7 Magazine, and worked as a freelance photographer with clients including San Francisco Magazine, Travel and Leisure Magazine, and Town and Country Magazine.

[www.sitarupe.com](http://www.sitarupe.com)






**Vivian Santamarina**  
San Francisco


***Once Upon a Time***  
Crocheted paper,  
sketchbook, vinyl letters,  
2009


Born in Argentina.

Uses books painted white as a building block for many works.


Galleries in the United States, Spain, Japan, Canada, and England have exhibited her works.

	<p><b>Laurie Szujewska</b> Penngrove</p>	<p>Exhibited in galleries since 1984, including Minna Street Center Gallery, O'Hanlon Center for the Arts, and Sebastopol Center for the Arts.</p>
	<p><i>Noisy Silence 3</i></p>	<p>Owner/artist of Ensatina Press. Worked as a designer and later art director at Adobe. Here she designed and art directed books, and designed the typeface <i>giddyup</i>.</p>
	<p><i>Noisy Silence 5</i></p> <p><i>Noisy Silence 6</i></p> <p>Letterpress monoprint, 2007</p>	<p><a href="http://www.ensatinapress.com">www.ensatinapress.com</a></p>

	<p><b>Thomas Taneyhill</b> Lafayette</p> <p><i>Dancing Oak</i> Oil on canvas, 2008</p>	<p>Has taught art at the Lafayette Art &amp; Science Foundation and Art Room in Lafayette.</p> <p>Works as a staff illustrator creating illustrations for companies within the craft industry. Also works as a freelance illustrator.</p> <p><a href="http://www.taneyhill.com/tom">www.taneyhill.com/tom</a></p>
---	--	---

	<p><b>Weston Teruya</b> Berkeley</p> <p><i><b>A Moment at the Shadow Cast by Ghosts (rituals of social mobility)</b></i></p> <p>Spray-paint, gouache, collage, ink, and colored pencil on paper, 2008</p>	<p>Exhibited throughout California, including at the San Francisco Arts Commission Gallery and Headlands Center for the Arts.</p> <p><a href="http://www.westonteruya.com">www.westonteruya.com</a></p>
---	---	---

	<p><b>Kris Vagner</b> Lafayette</p> <p><i><b>Untitled 3</b></i></p> <p>Photographic C-Print</p>	<p>Exhibited work mainly in California and Nevada since 1994.</p> <p>Serves as Co-Director of the Lamorinda Arts Alliance Open Studios, and is a studio intern at The Crucible in Oakland.</p> <p><a href="http://www.krisvagner.blogspot.com">www.krisvagner.blogspot.com</a></p>
---	---	--

	<p><b>Ann Weber</b> Emeryville</p> <p><i><b>String of Pearls</b></i></p> <p>Cardboard, staples, shellac, steel, 2006</p>	<p>Exhibited throughout Northern California. Artist in residence at de Young Museum in San Francisco and at Montalvo Arts Center in Saratoga. Featured on <i>Spark!</i>, KQED's program about Bay Area artists. Public art commissions in Phoenix, Seattle, Denver, Sacramento, Palo Alto.</p> <p><a href="http://www.annwebersculpture.com">www.annwebersculpture.com</a></p>
---	--	--



**Joe Bologna**  
Walnut Creek

Gift of  
Mary Ann and William  
Hoisington

President of Diablo Regional Arts Association, Member of Walnut Creek Arts Commission, Curator of the Lafayette Gallery Sculpture Garden, Board member of the Clay Arts Guild, Member of Exhibition Committee of Pacific Rim Sculptors Group



**François Séraphin  
Delpech** (1778–1825)  
Paris

*Gilbert du Motier ,  
Marquis de Lafayette*  
Lithograph, circa 1830

Gift of Gilbert Sonet