



John Kiefer was a Parks, Trails & Recreation Commissioner from 1986 to 1994. During that time he supervised the construction of two Lafayette Ridge feeder trails: The Petar Jakovina (Sessions Road) and Springhill Valley Trail (renamed John Kiefer in 2012). As a man of action, John created the Volunteer Trails Maintenance Program in 1995 and continued to coordinate this successful program with PTR department staff.

Understanding the need to keep our City trails safe and navigable at a minimal cost, he mentored City volunteers, staff and commissioners by getting them out on the trails each spring to assess their condition and develop maintenance “to do” lists. He was also instrumental in the creation of neighborhood trails maps. His practical procedures for involving Lafayette citizens in trail upkeep have resulted in countless hours of volunteer maintenance work for the City.

TRAIL RULES, REGULATIONS AND RESTRICTIONS

- Trails are open to the public from dawn to dusk.
- Alcoholic beverages and smoking are not permitted.
- Firearms, hunting, shooting, fireworks, fires of any type, including matches and lighters, are not permitted.
- All plant, wildlife and geological features are protected by laws. Do not capture, collect or harm.
- Dogs must be securely leashed and under the control of their owners at all times. Dog waste and trash must be carried out.
- With the exception of motorized wheel chairs, motorized vehicles of all types are prohibited.
- Respect private property and be considerate of neighbors and fellow trail users by keeping noise down.
- Cutting, breaking, defacing or disturbing a sign, fence, bench, or other city property located on trails is prohibited.
- Placing a rope, wire, mark, writing, or sign on a tree, plant or city structure located on, or next to a trail is not allowed.
- Bicycles are not permitted on trails that have been posted as unsafe for bicycle use.
- Bicycles shall be operated in a safe manner especially when sharing trails with pedestrians. Bicycle speed, on mixed-use trails shall not exceed 15 mph on straight aways and 5 mph around corners and hills. Call out when pedestrians are ahead.

Lafayette Municipal Code Chapter 8-22, contains a complete listing of the rules, regulations and restrictions applicable to all Lafayette trails. Violations will be subject to citations and fines.

LAFAYETTE EMERGENCY & MAINTENANCE CONTACTS

Police Dispatch:	925.284.5010
Public Works:	925.934.3908
Parks, Trails & Recreation Dept.:	925.284.2232

TO REPORT A MAINTENANCE ISSUE OR TO VOLUNTEER, DONATE, OR HELP WITH TRAILS:

Email the PTR Dept: Trails@LoveLafayette.org

FOR GENERAL TRAILS INFORMATION:

<http://www.ci.lafayette.ca.us/>

TO REPORT SUSPICIOUS ACTIVITY:

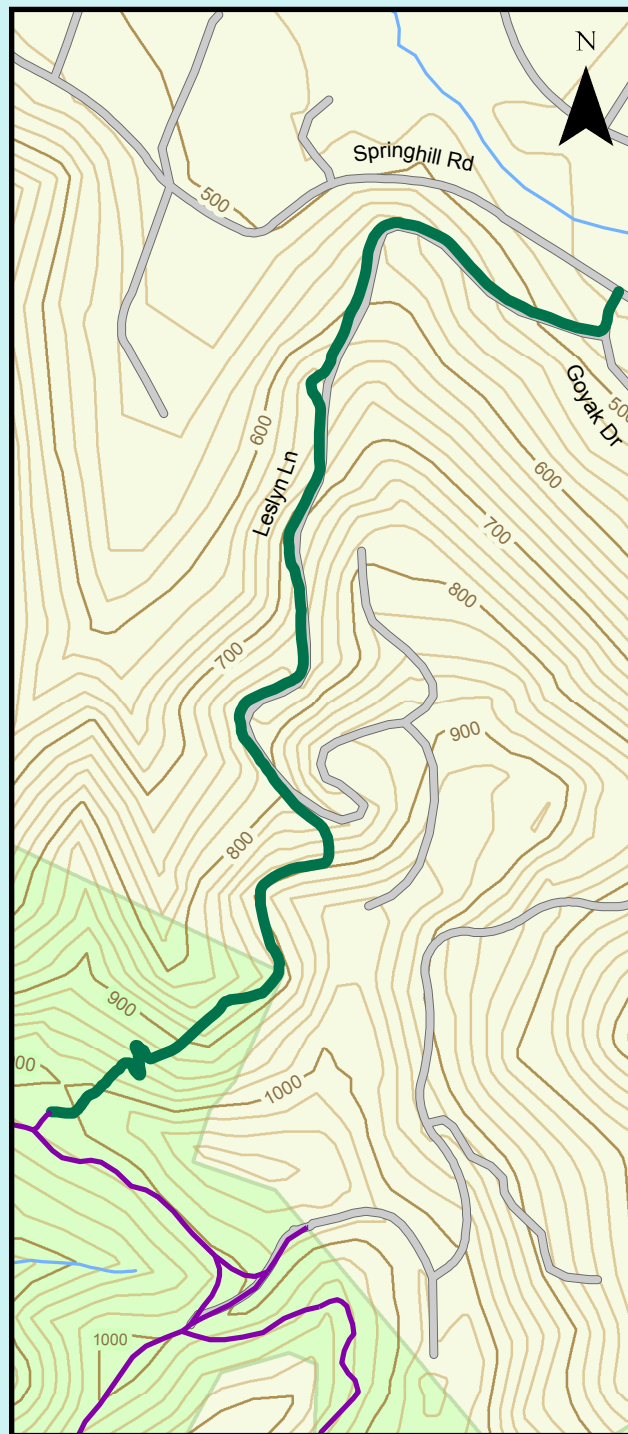
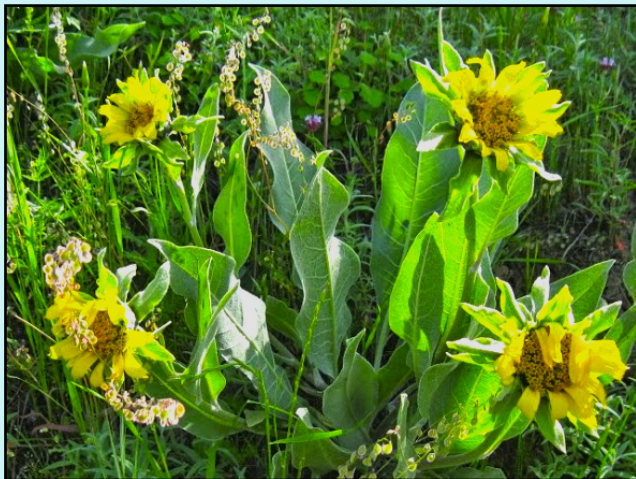
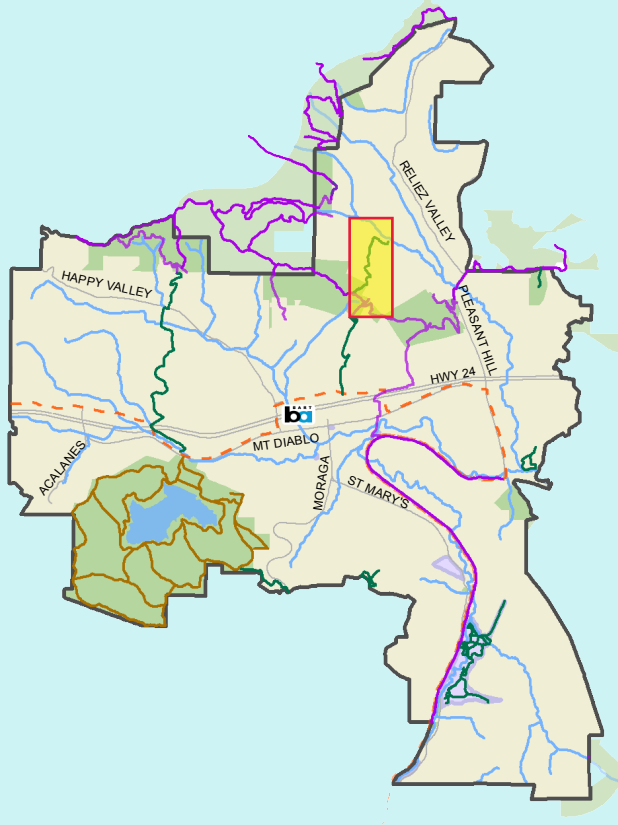
Email the Police Tip hotline: 94549tip@gmail.com

John Kiefer Trail



**CITY OF LAFAYETTE
PARKS, TRAILS & RECREATION DEPT.**

John Kiefer Trail



0 175 350 Feet

— City Trail
— EBRPD Trail
 Public Open Space

John Kiefer - Springhill Valley Trail

The John Kiefer Trail is a “feeder” trail providing access from the Springhill Valley to the Lafayette Ridge and Briones Regional Park. The entrance to the trail is at the intersection of Goyak Drive and Leslyn Lane.

The trail proceeds up Leslyn Lane for 0.5 mile, where the trail leaves the road, and winds up the hill beneath oaks, maples, and bay laurels. In the spring, wildflowers are plentiful along the switchback at the top of the trail.



On the ridge there is a bench under a pine tree where you may rest and enjoy views of Lafayette. For a loop hike, park in the EBRPD staging area on Pleasant Hill Road North - climb the Lafayette Ridge, then hike down the John Kiefer Trail, back down Springhill Road to your car.

One Way Length: 0.75 miles

Surface: Paved street and dirt trail

Terrain: Steep climb with stairs

Parking: Only on public roads where permitted.

NO PARKING on Leslyn Lane.