

DOWNTOWN CREEKS PLAN



L A F A Y E T T E , C A



COMMUNITY MEETING # 2
February 2, 2016, 7:00 – 9:00 p.m.
Lafayette Library & Learning Center

AGENDA

1.	Introduction
2.	Project Overview: <ul style="list-style-type: none">• History of project• Goals• Schedule
3.	Purpose of meeting / Format (Share ideas & prioritize)
4.	Potential Project Presentation
5.	General Questions
6.	Project Discussion Stations
7.	Summary of Input
8.	Next Steps / Wrap-up

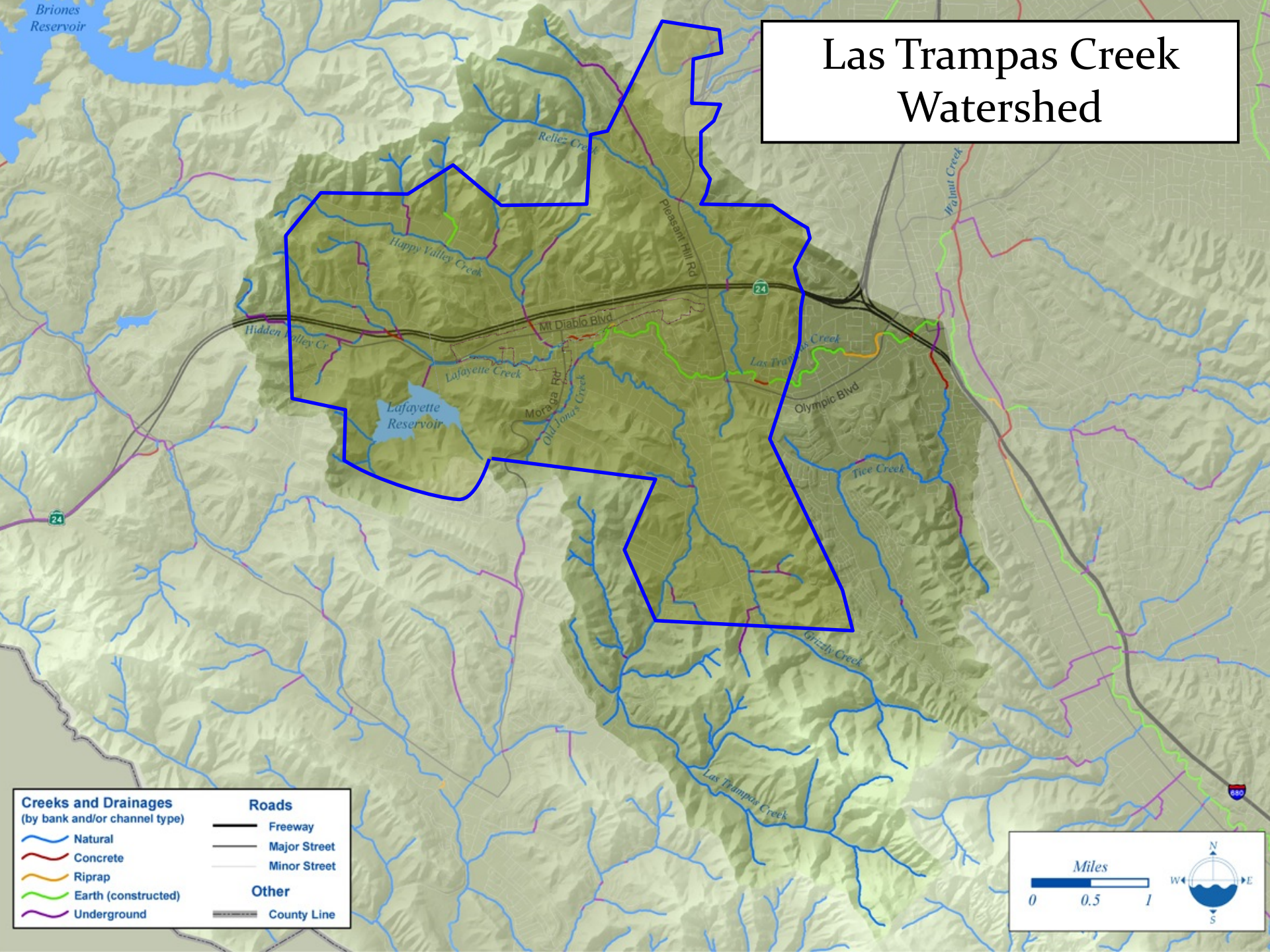
CREEKS COMMITTEE

- Mission: Encourage beautifications of Lafayette's more than 16-miles of creeks and improve residents' awareness of creek maintenance and pollution prevention policies
- Committee Members:
 - Will Elder, Chair
 - Philip Bradley, Committee Member
 - Jeffrey Gilman, Committee Member
 - Scott Honegger, Committee Member
 - Michael Marchetti, Committee Member
 - Kenneth Markey, Committee Member
 - Austin Payne, Committee Member

 - Brandt Andersson, Primary Council Liaison
 - Mike Anderson, Alternate Council Liaison



Las Trampas Creek Watershed

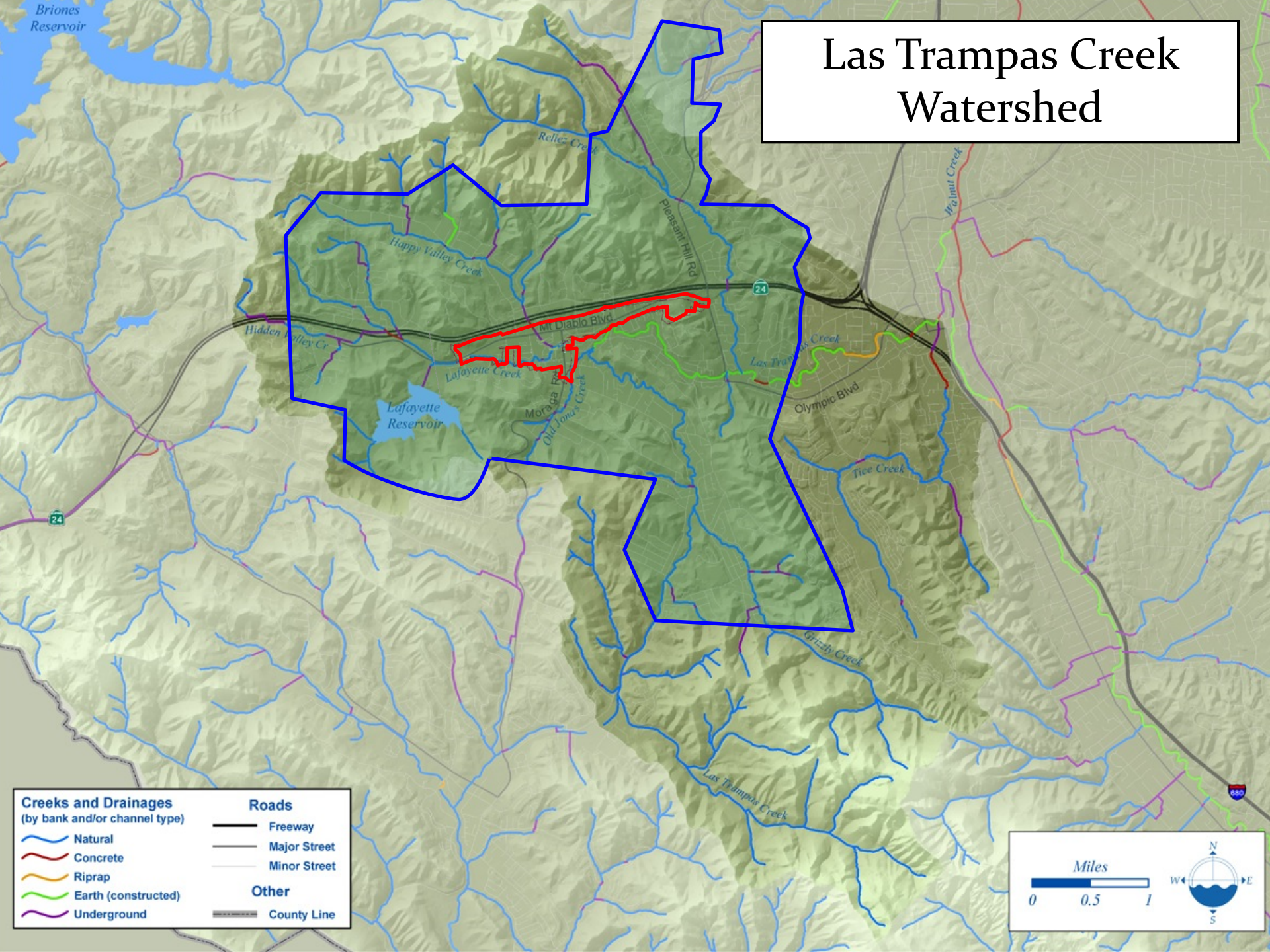


Creeks and Drainages (by bank and/or channel type)	Roads
Natural	Freeway
Concrete	Major Street
Riprap	Minor Street
Earth (constructed)	
Underground	
	Other
	County Line

Miles

0 0.5 1

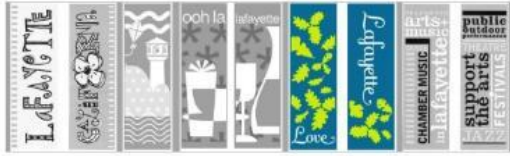
Las Trampas Creek Watershed



Creeks and Drainages (by bank and/or channel type)	Roads
Natural	Freeway
Concrete	Major Street
Riprap	Minor Street
Earth (constructed)	Other
Underground	County Line

Miles

CITY OF LAFAYETTE
DOWNTOWN SPECIFIC PLAN



SEPTEMBER 10 • 2012

DOWNTOWN SPECIFIC PLAN

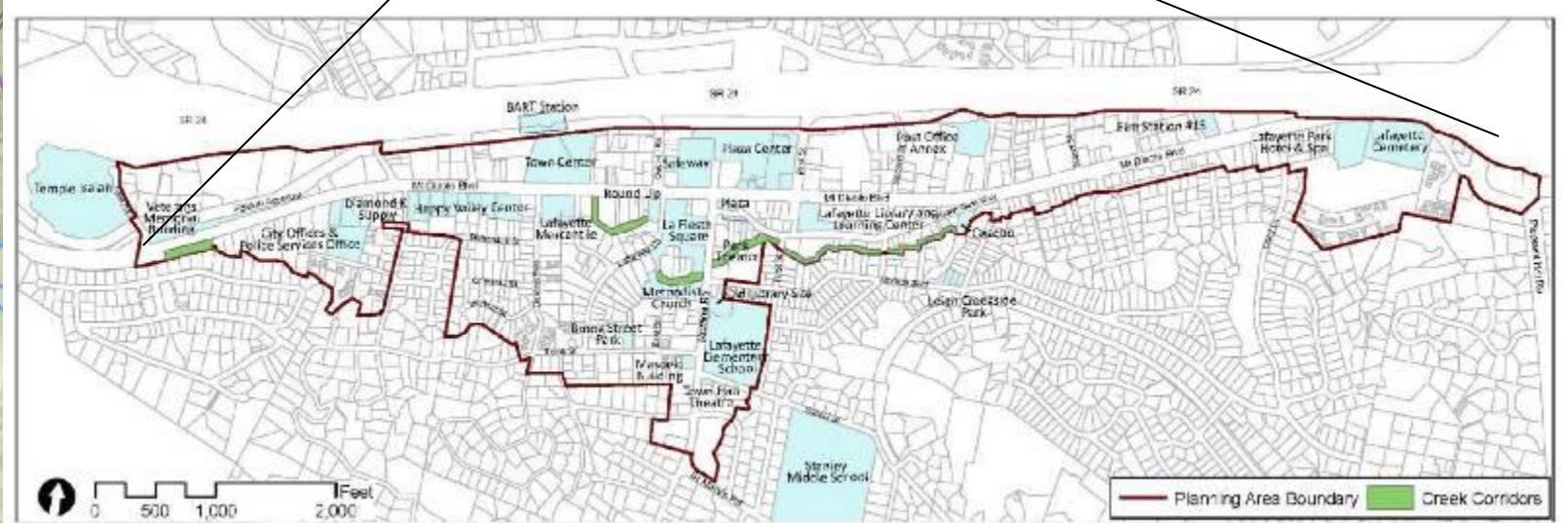
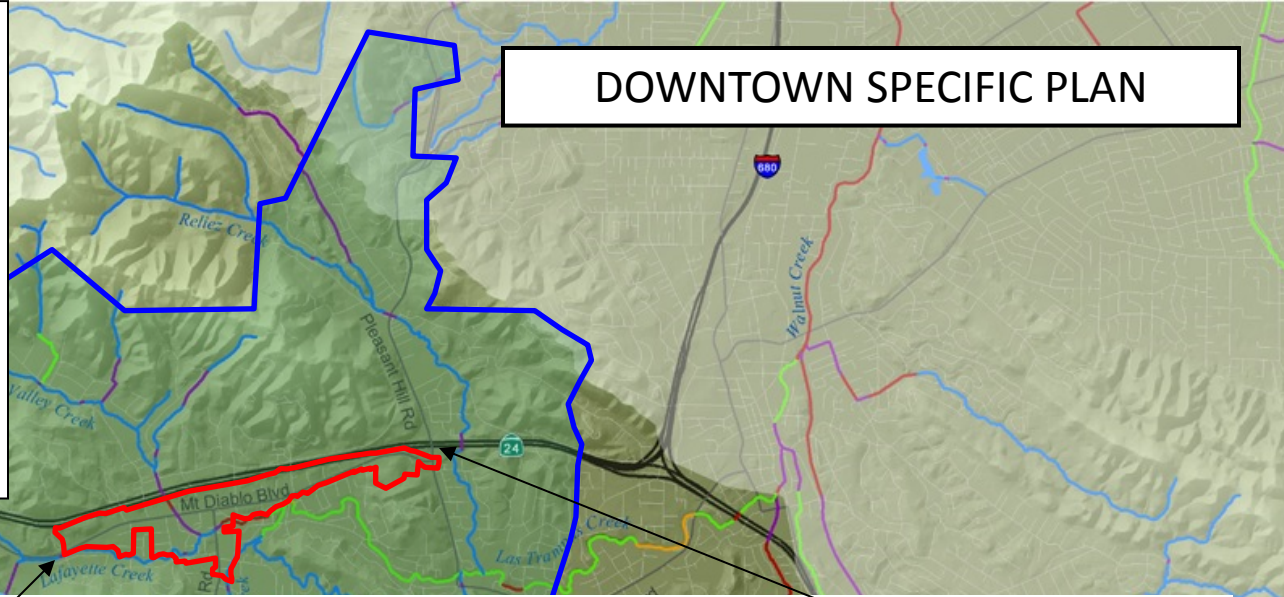


Figure 1. Context Map

Creeks and Drainages
(by bank and/or channel type)

- Natural
- Concrete
- Riprap
- Earth (constructed)
- Underground

Roads

- Freeway
- Major Street
- Minor Street

Other

- County Line





Image SF Estuary Institute Contra Costa County UCB

Google earth

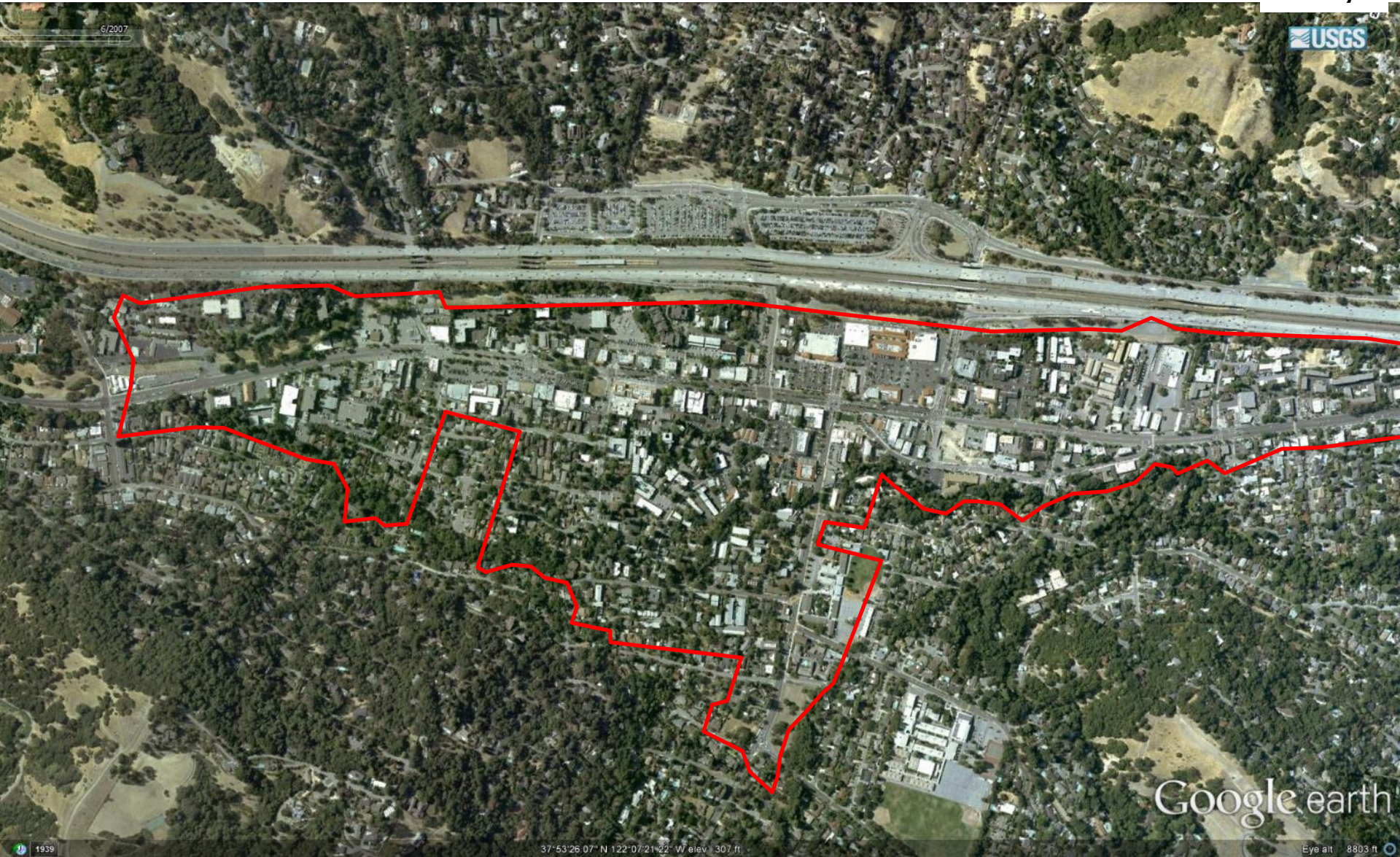
1939

37°53'26.07" N 122°07'21.22" W elev. 307 ft

Eye alt. 8803 ft



6/2007

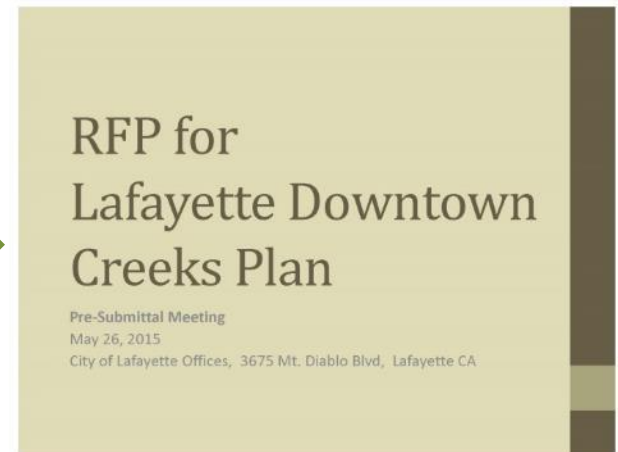
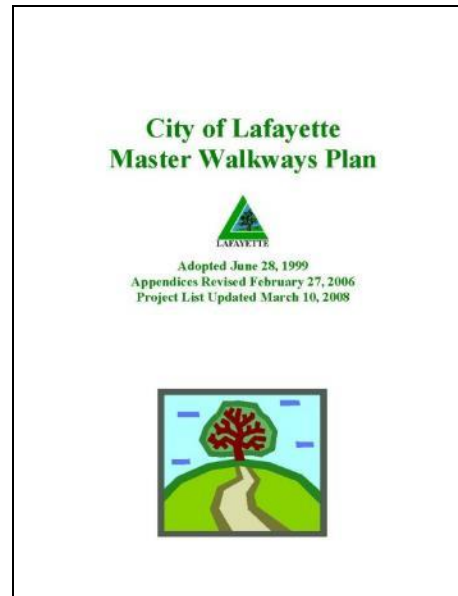
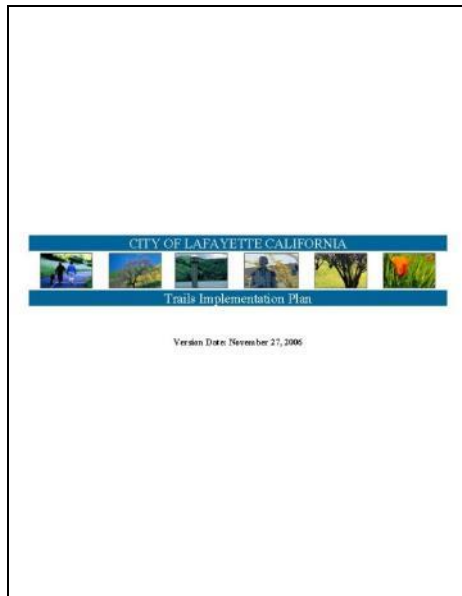
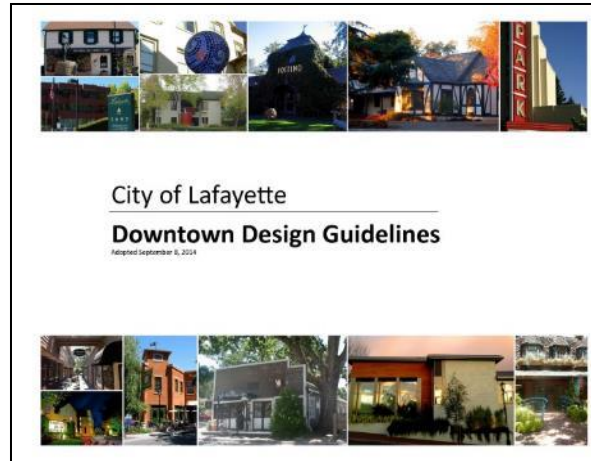
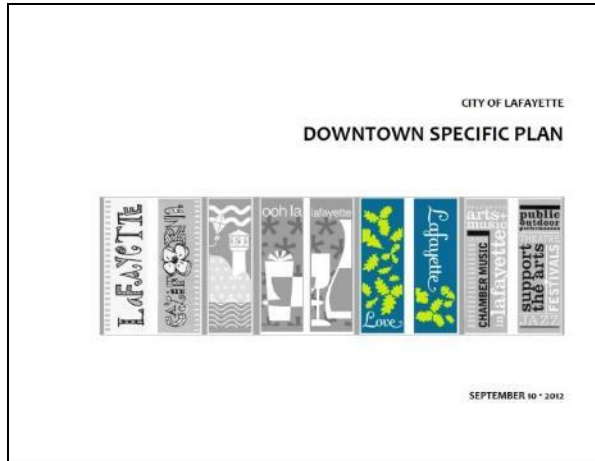


Google earth

37° 53' 26.07" N 122° 07' 21.22" W elev. 307 ft

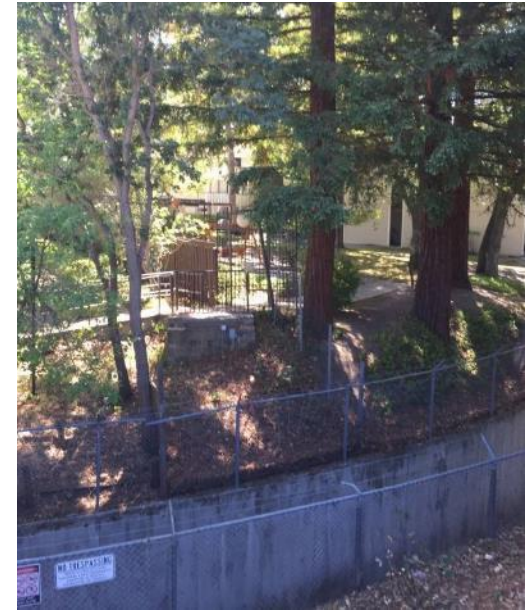
Eye alt 8803 ft

HISTORY OF PROJECT

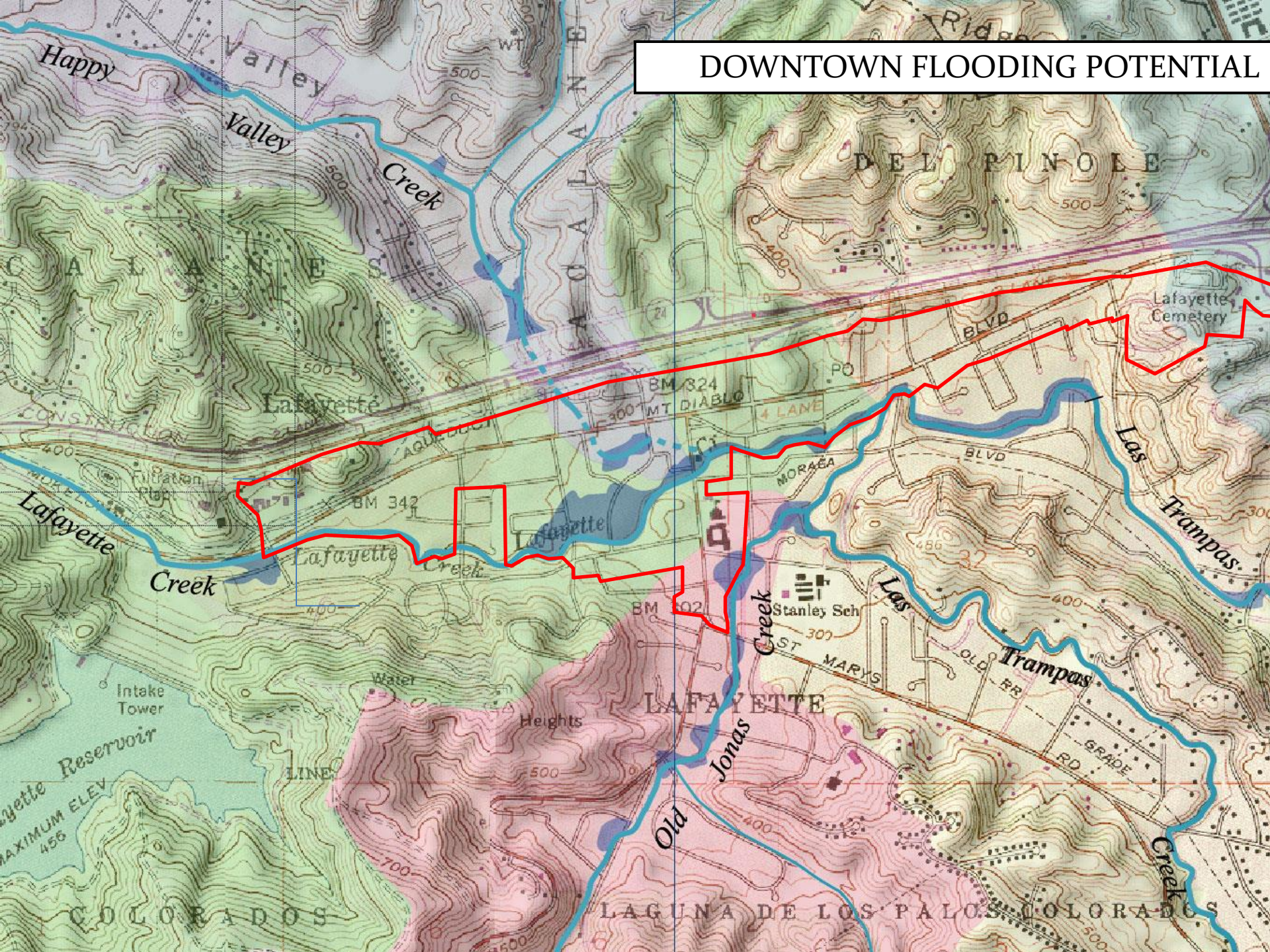


PROJECT SCOPE

- Preserve and enhance the natural habitat value of creeks
- Evaluate projects within and adjacent to creek corridors for the following (in priority order):
 - Flood protection
 - Preservation of riparian habitat
 - Visual access
 - Opportunities for education about the creek's riparian resources
 - Physical access to the top of creek banks
- Preserve creeks as a significant contributor to the downtown character



DOWNTOWN FLOODING POTENTIAL



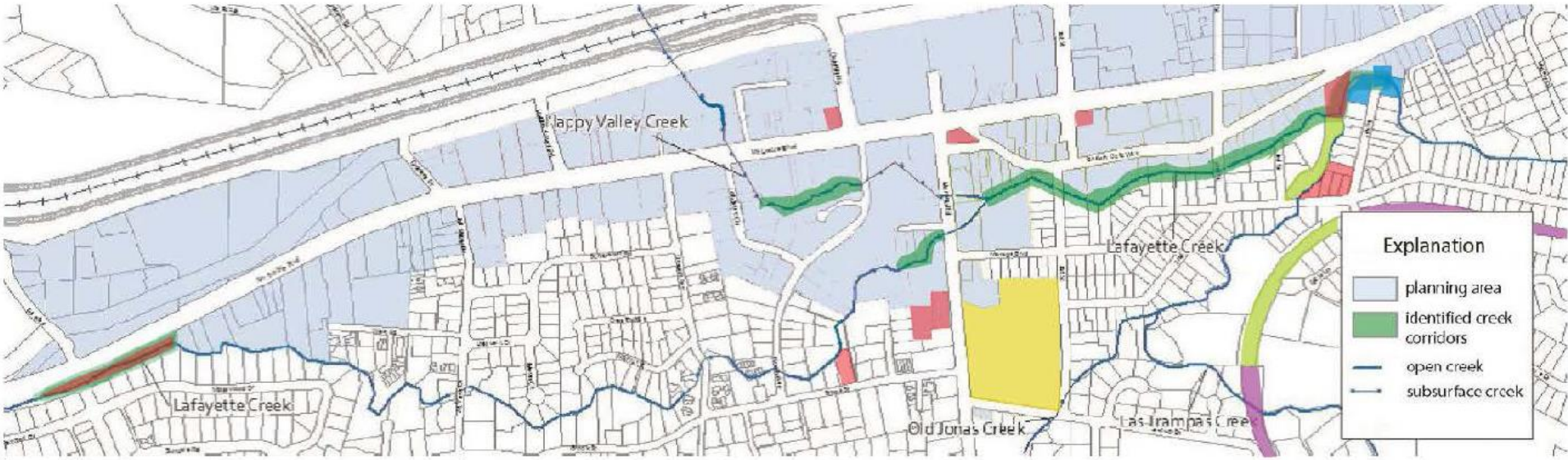
LOW IMPACT DEVELOPMENT



HABITAT RESTORATION



PUBLIC OWNERSHIP



LEGEND

- City of Lafayette
- Contra Costa County Flood Control District
- East Bay Regional Parks District
- East Bay Municipal Utility District
- Lafayette School District

Explanation

- planning area
- identified creek corridors
- open creek
- subsurface creek

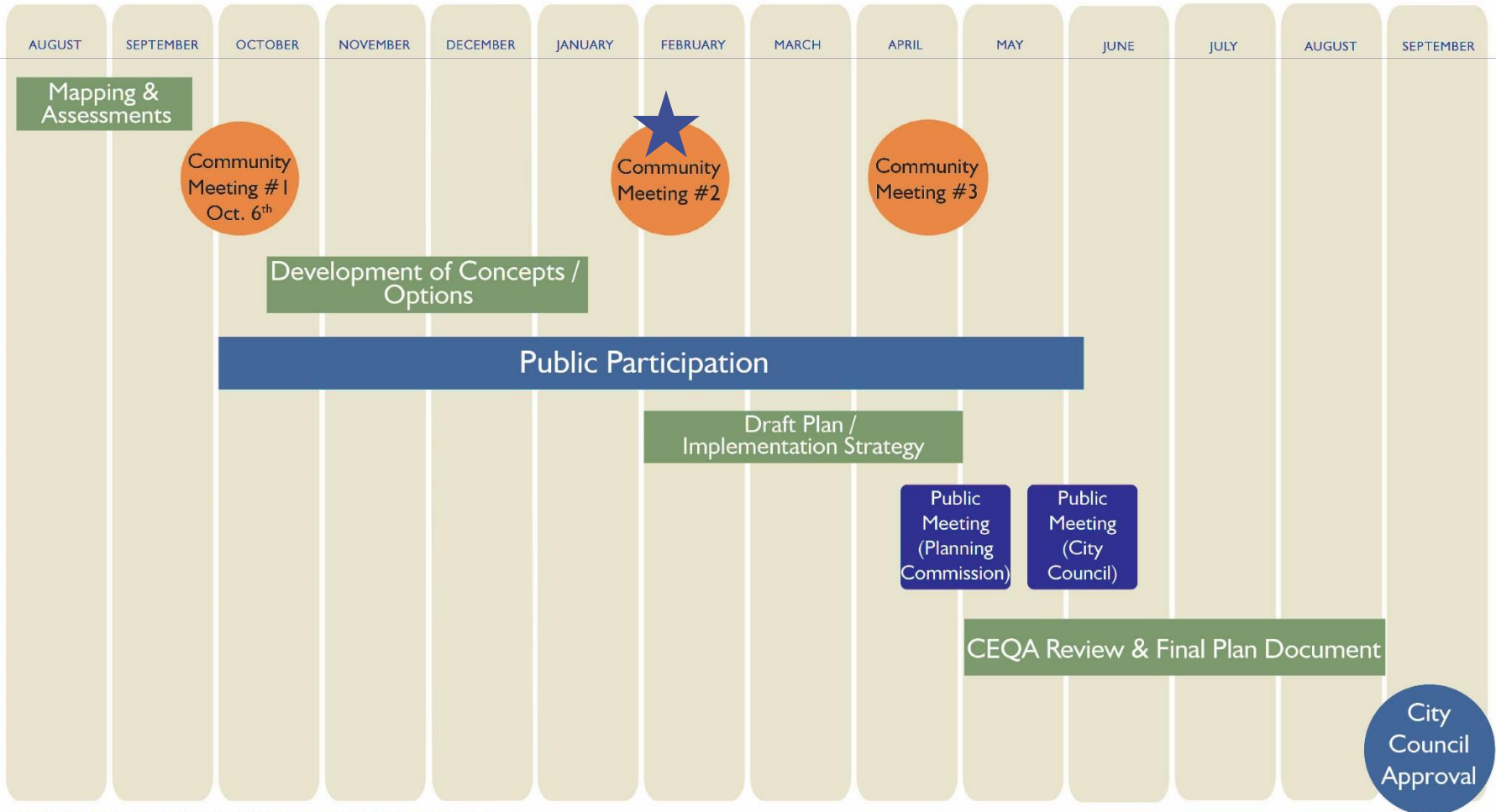
PLAN GOALS

- The plan should establish a long term vision for downtown creeks and should address the following:
 - Creek setbacks
 - Relationship with adjacent development
 - Existing trees
 - Damage prevention
 - Creek preservation and restoration
 - Creek stewardship
 - Nuisance abatement
 - Public access
 - Pathways
 - Other public safety and environmental concerns



PROJECT SCHEDULE

LAFAYETTE DOWNTOWN CREEKS PLAN PROJECT SCHEDULE



PLEASE NOTE: DATES ARE SUBJECT TO CHANGE

DOWNTOWN CREEKS PLAN WILL STUDY THE "IDENTIFIED CREEK CORRIDORS" SHOWN ON THIS MAP

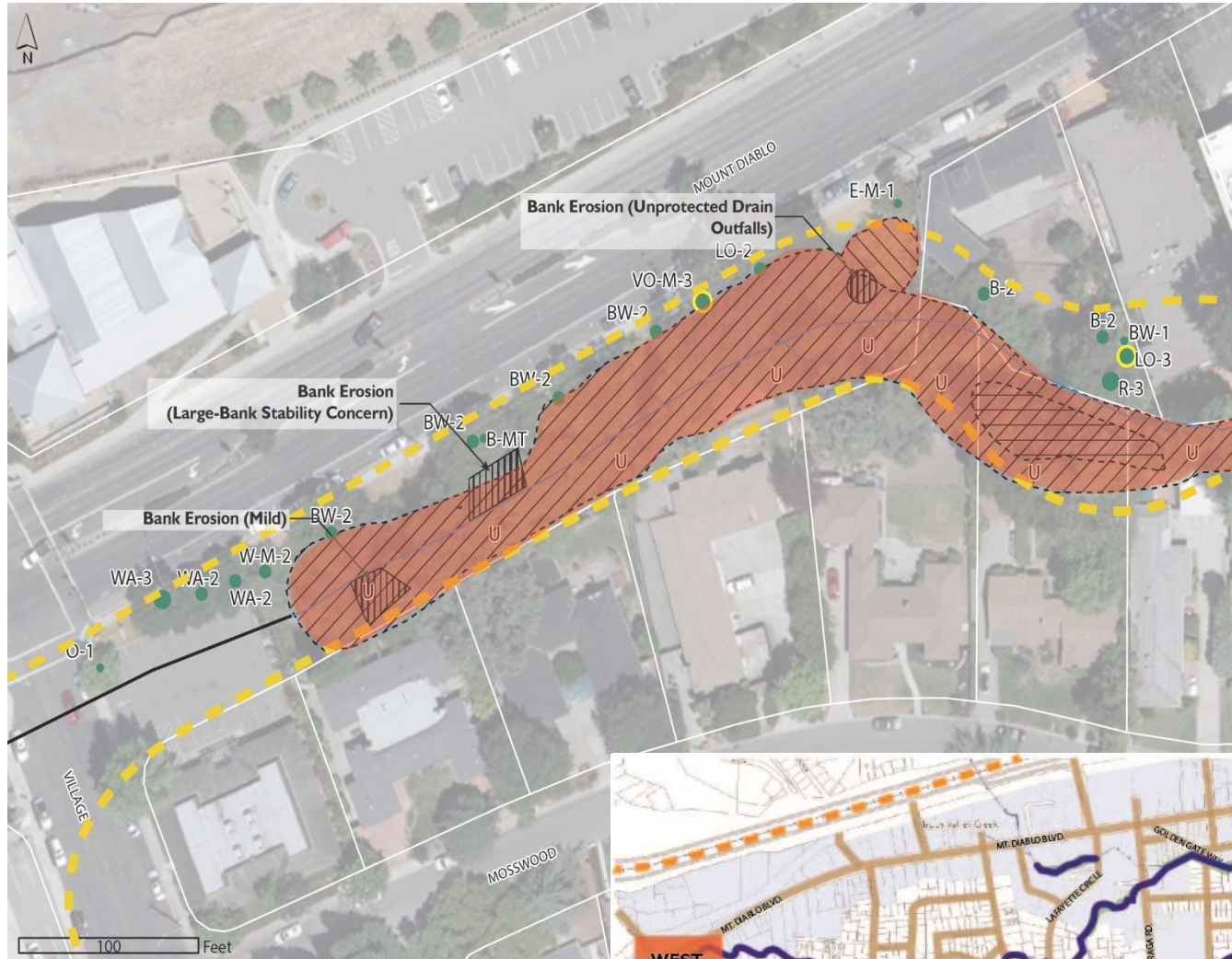


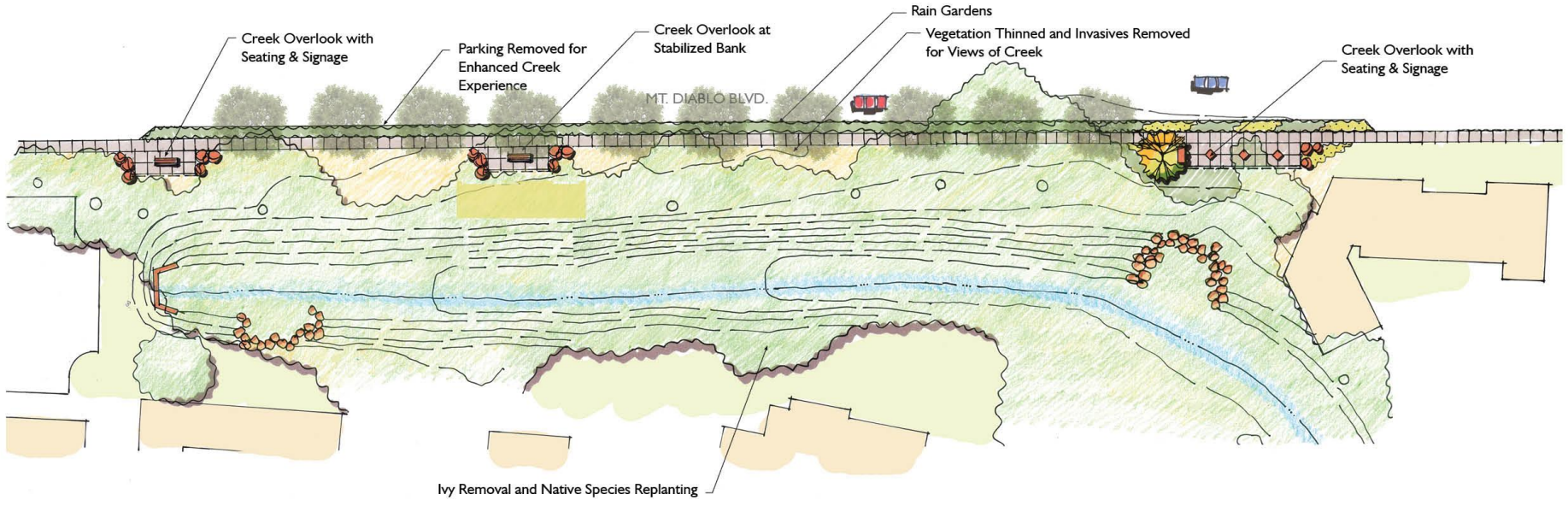
MAP OF OVERALL PLAN AREA



LEGEND
 Limits of creek reaches included in plan









CURRENT VIEW

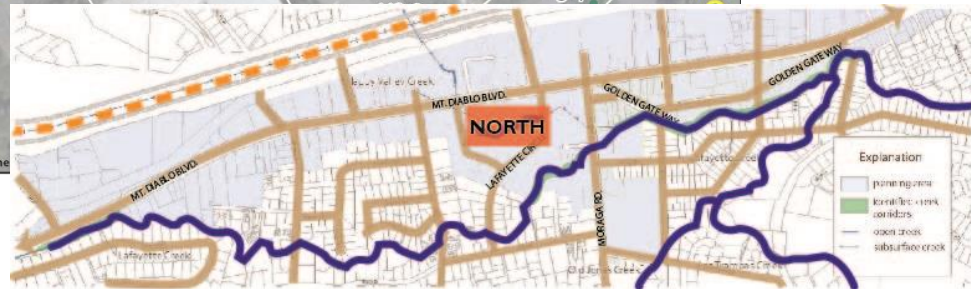
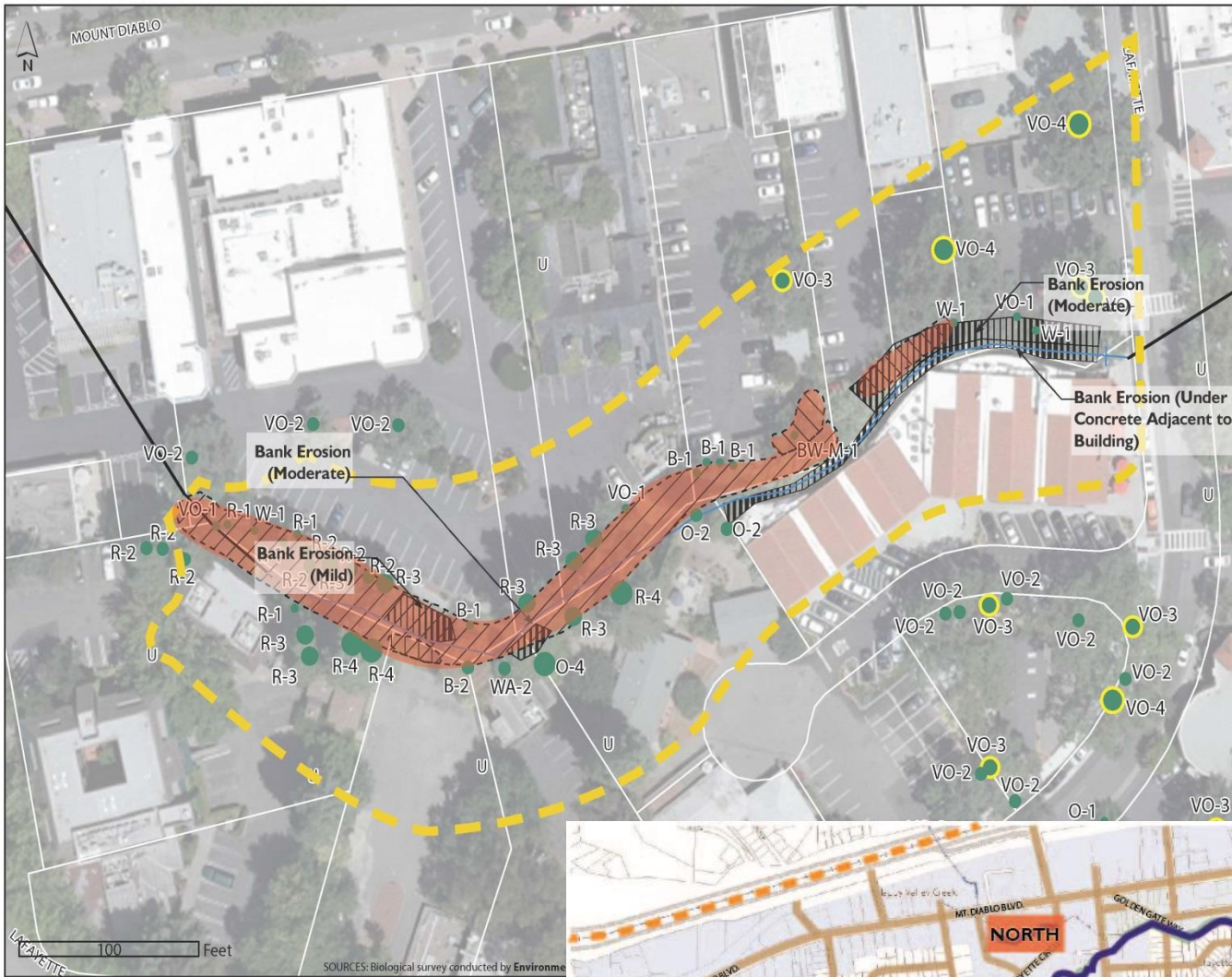


KEY MAP



OVERLOOK, LOOKING NORTH AT MT. DIABLO BLVD.

PUBLIC OWNERSHIP





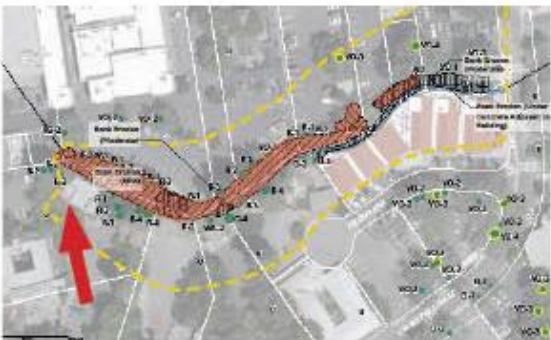
Allow Variance with creek setback to create Town Green around Oak Tree



PRIVATE OWNERSHIP



CURRENT VIEW



KEY MAP



NORTH-SOUTH PEDESTRIAN CONNECTION, LOOKING NORTH TOWARD CLOCK TOWER



CURRENT VIEW



OPTION 1

PUBLIC OWNERSHIP



KEY MAP



OPTION 2: LOOKING SOUTH ALONG LAFAYETTE CIRCLE

PUBLIC & PRIVATE OWNERSHIP



CURRENT VIEW



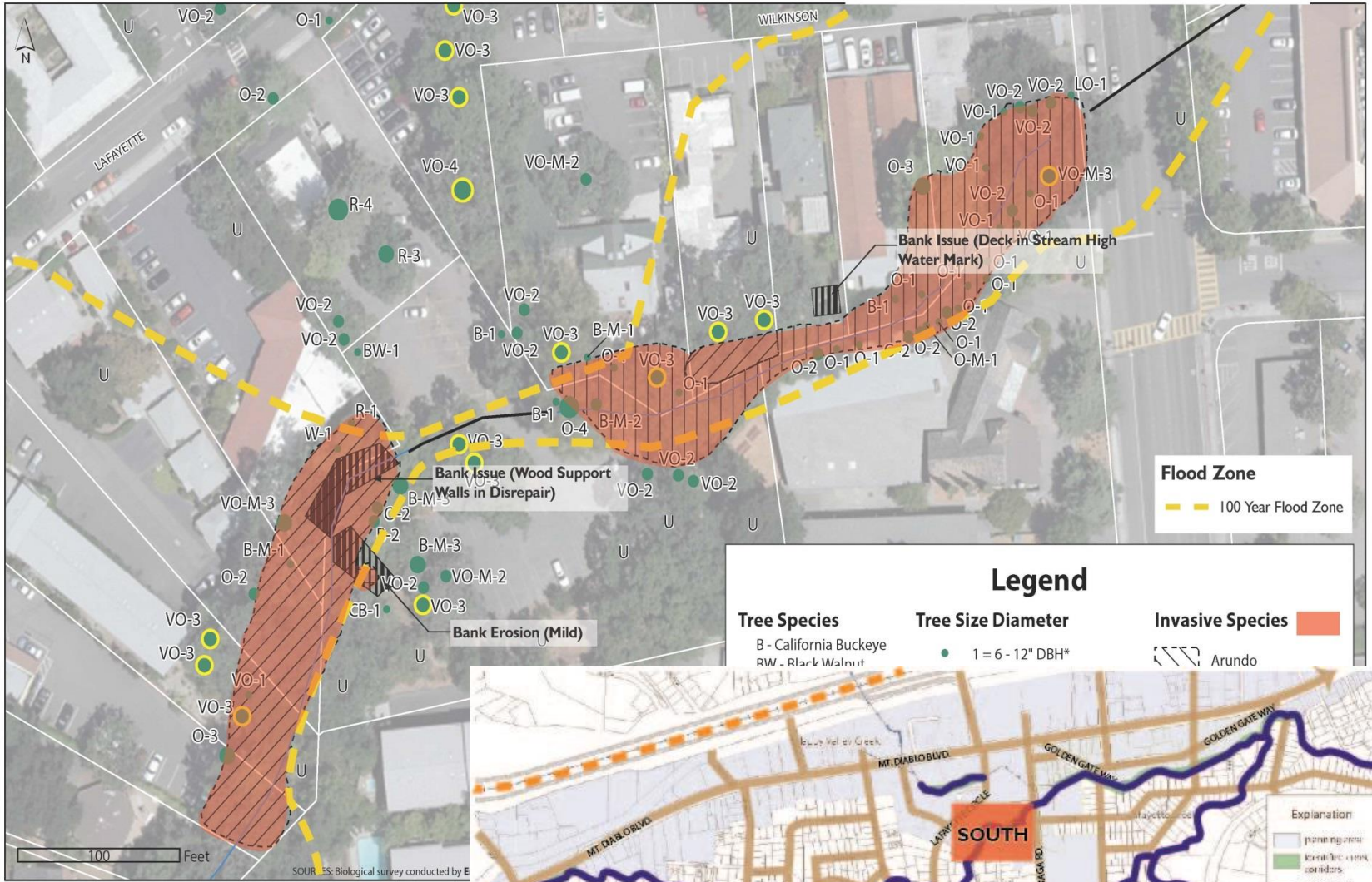
KEY MAP



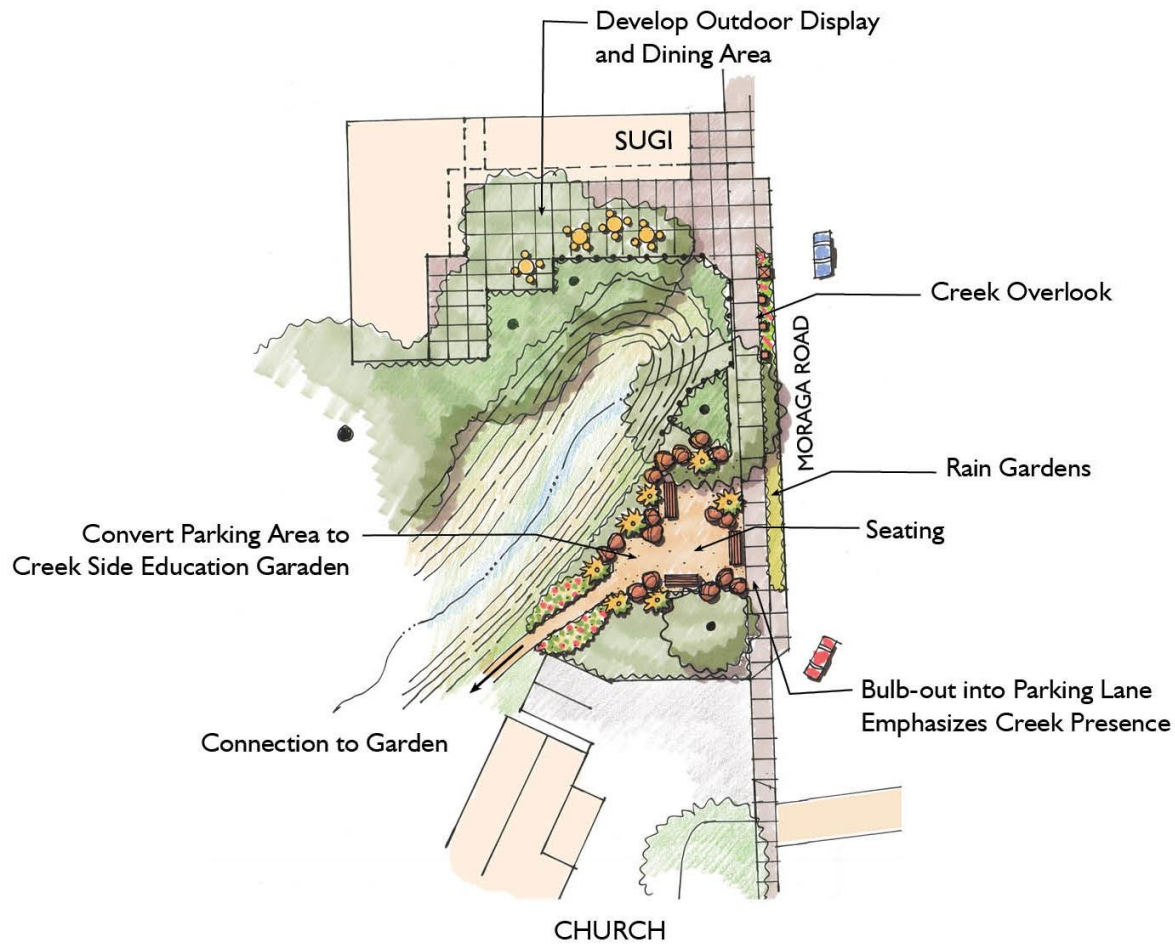
MURAL AND DECORATIVE FENCING NEAR COOPERAGE

PRIVATE OWNERSHIP

PRIVATE OWNERSHIP









CURRENT VIEW



OPTION 1

PUBLIC OWNERSHIP



KEY MAP



OPTION 2: CREEK VIEWING AREA AT MORAGA ROAD

PRIVATE OWNERSHIP



CURRENT VIEW

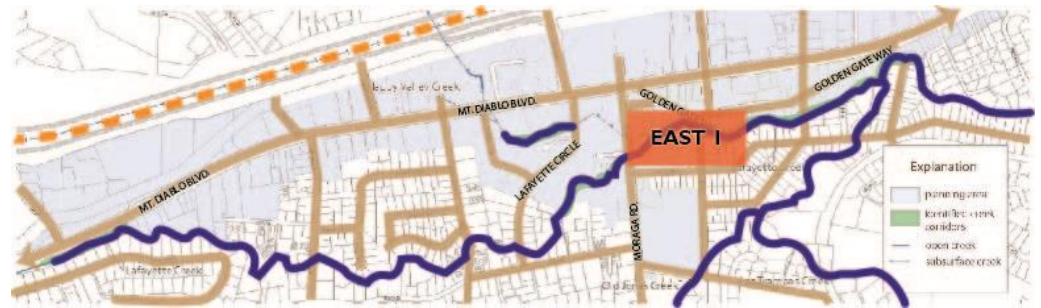
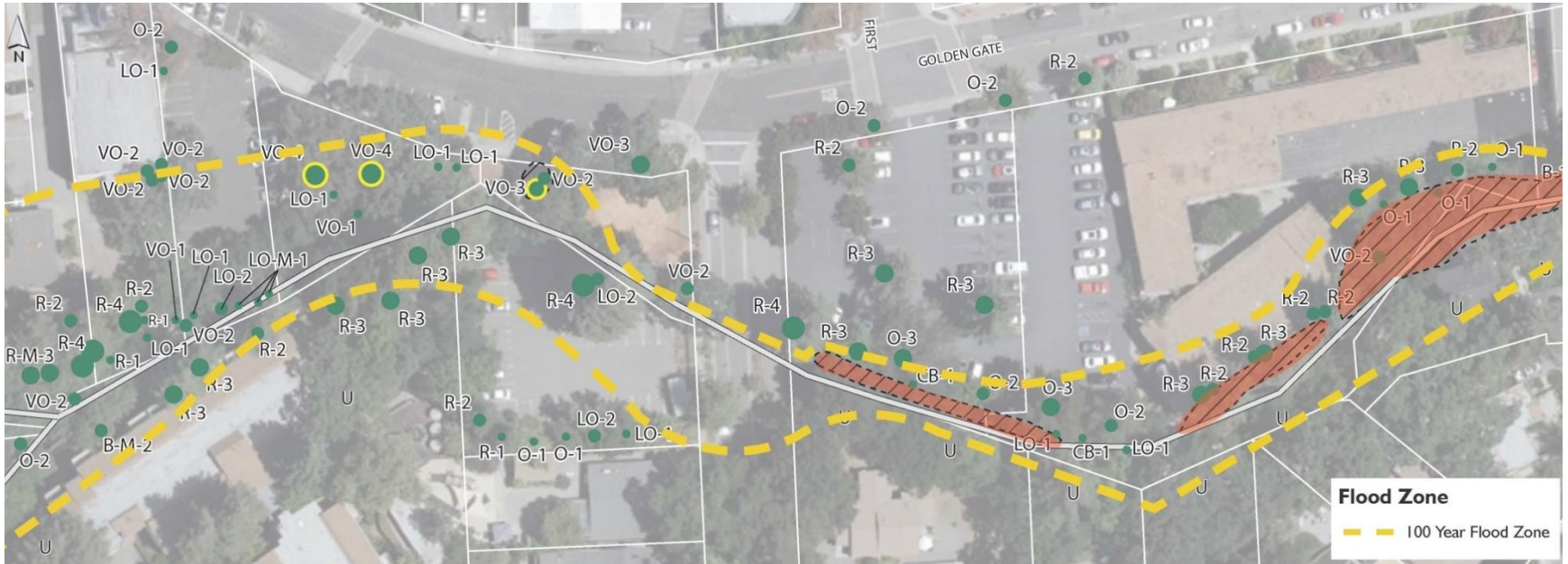


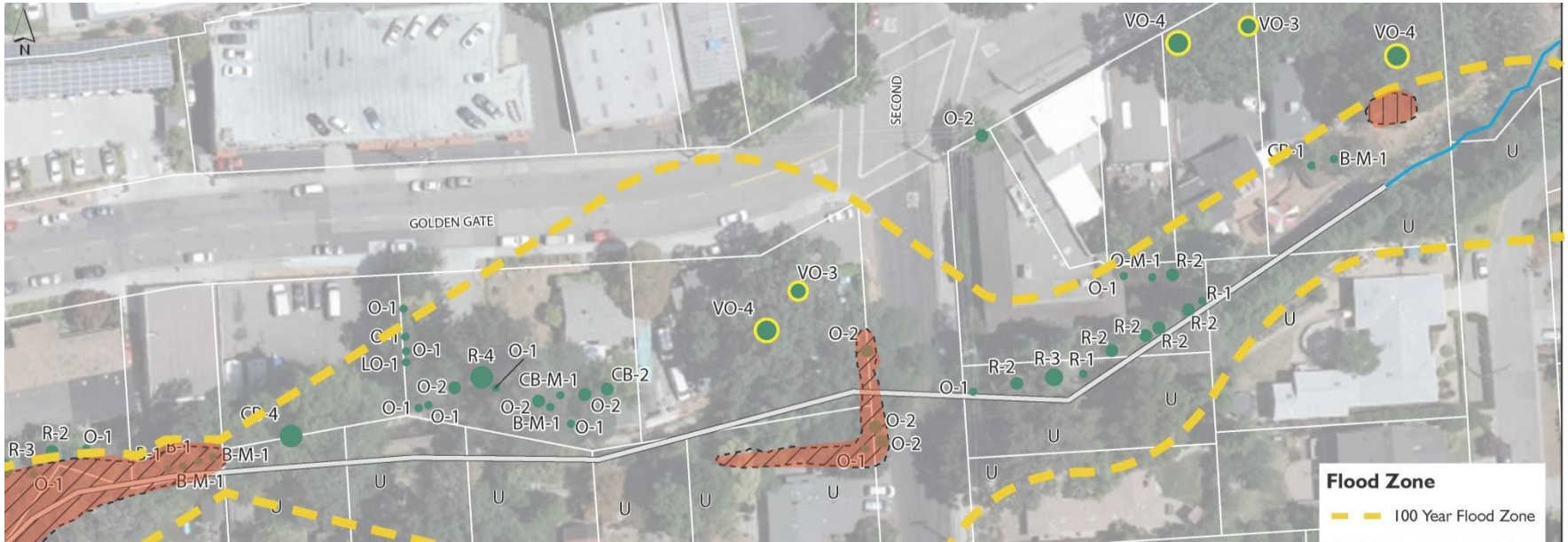
KEY MAP

PRIVATE OWNERSHIP



CREEK VIEWING AREA BEHIND SUGI

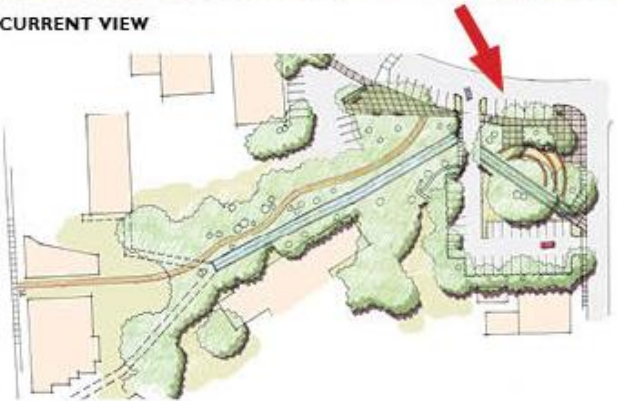








CURRENT VIEW



KEY MAP



OPTION I: LOOKING SOUTHEAST FROM GOLDEN GATE WAY AT FIRST STREET

PRIVATE OWNERSHIP



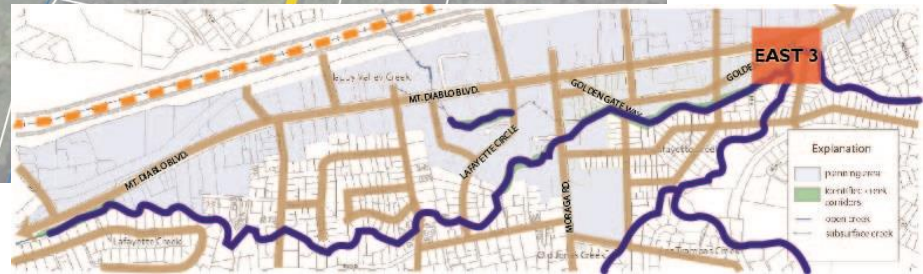
CURRENT VIEW

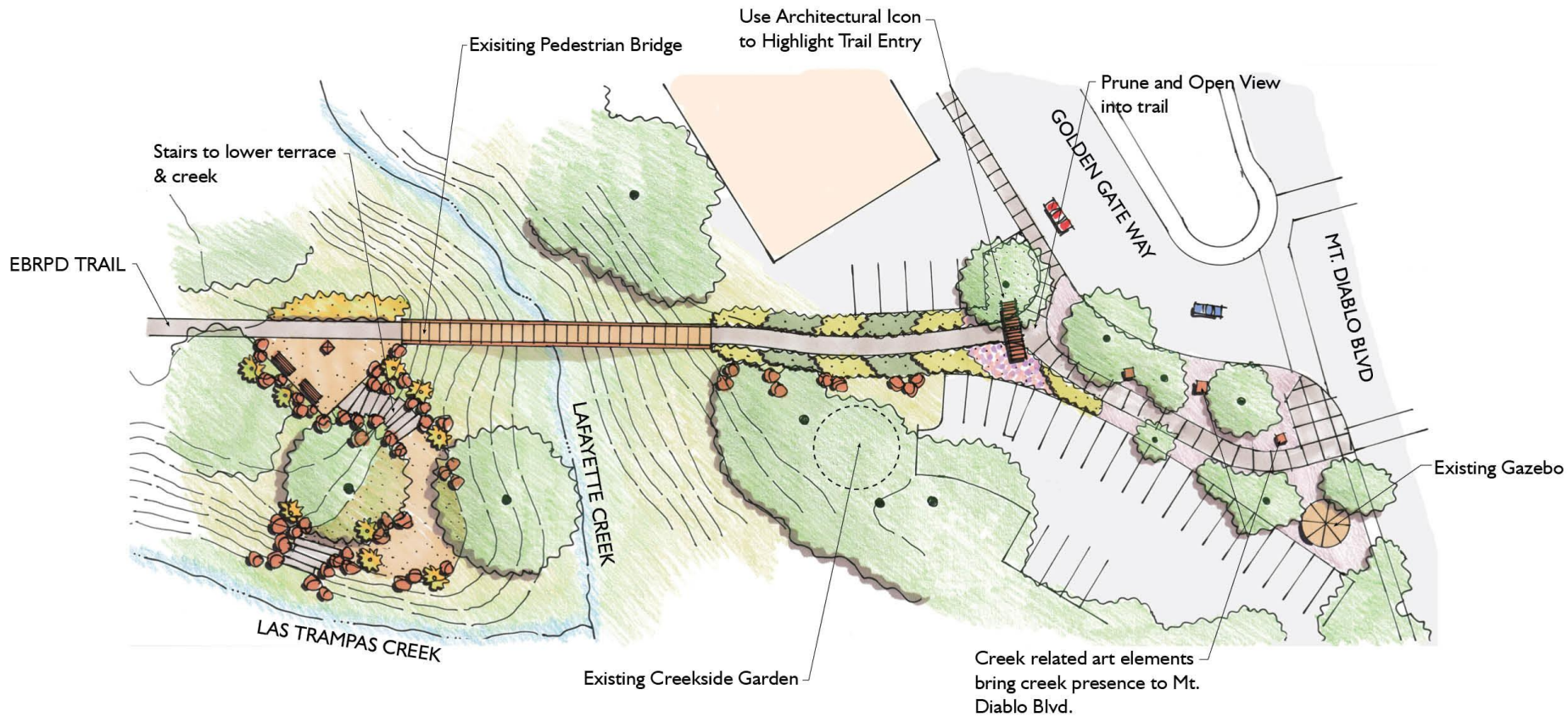


KEY MAP



LOOKING EAST ALONG CONCRETE CHANNEL







CURRENT VIEW

Starts to lower terrace
to creek.



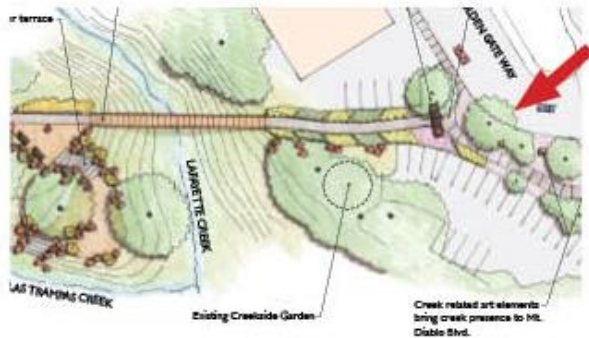
KEY MAP



STAIRS TO LOWER TERRACE AT CREEK CONFLUENCE



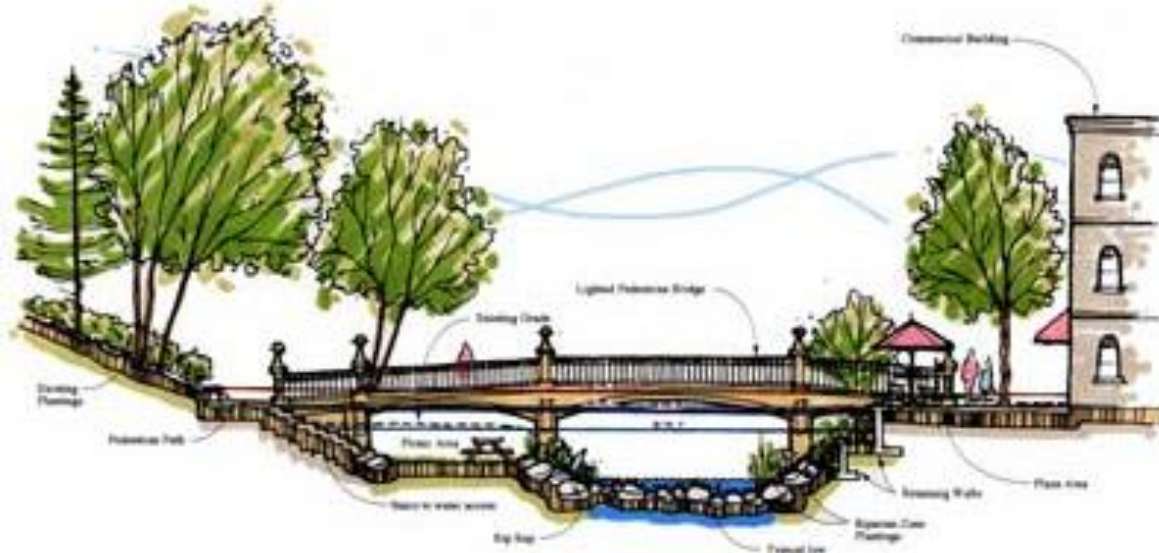
CURRENT VIEW



KEY MAP



VIEW TOWARD CREEK FROM GOLDEN GATE WAY AT LOS TRAMPAS - BRIONES TRAIL



San Luis Obispo Creek, CA





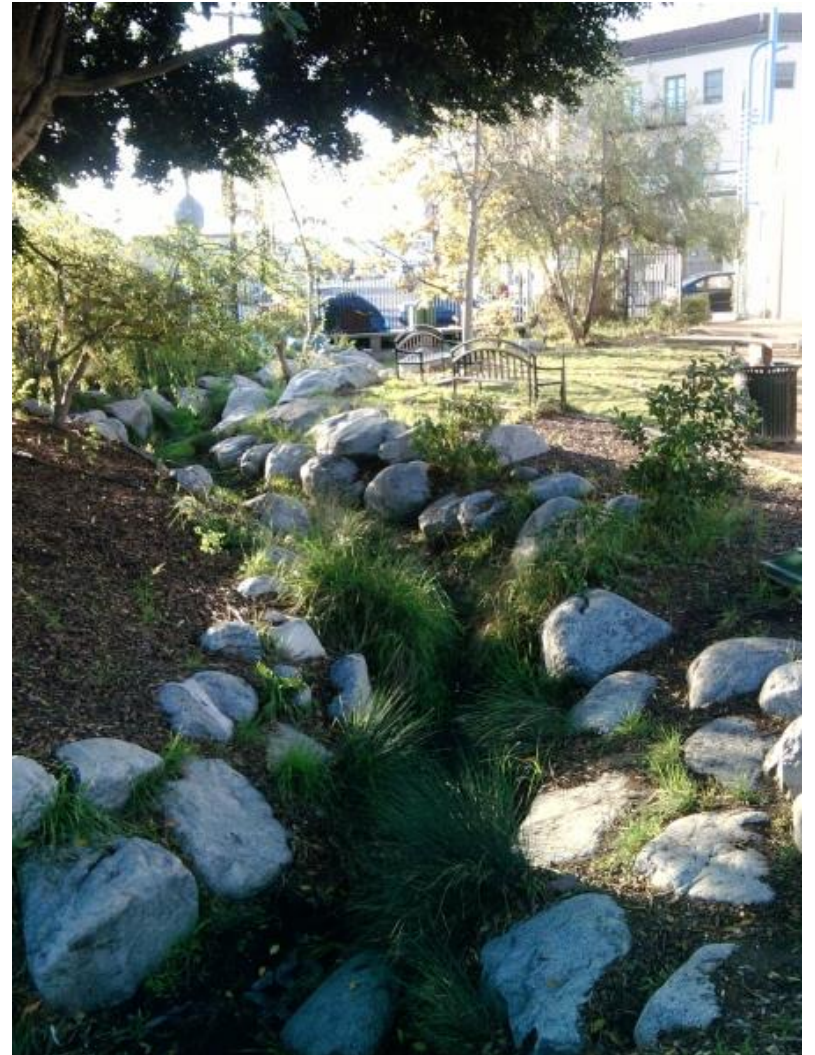
Flat Branch Creek, Columbia, MO





Strawberry Creek, Berkeley, CA

Bimini Slough, Los Angeles, CA



LAFAYETTE DOWNTOWN CREEKS PLAN
PRELIMINARY PROJECT PRIORITIES

Feb. 2, 2016

		Low ----- High					
	Project	1	2	3	4	5	
PUBLICLY CONTROLLED	1	West Reach – Create gateway with overlooks, signage, and removal of invasives					
	2	West Reach – Expand top of creek bank area by removing parking along south side of Mt. Diablo Blvd.					
	3	South Reach – Bulb out and overlook at Moraga Rd.					
	4	East Reach 3 – Stairs to lower terrace and creek					
	5	East Reach 3 – Art elements to highlight creek presence					
PUBLIC / PRIVATE PARTNERSHIPS	6	All Areas - Remove invasive plants (above ground only – permits not needed)					
	7	All Areas - Remove invasive plants and replant with native riparian vegetation					
	8	Work with property owners to incentivize creek enhancements					
	9	City develop maintenance association for creek channel improvements					
	10	Work with agencies to streamline permit process					
	11	Install creek signage – wayfinding, identity and interpretive					
	12	Other					
	13						

EVALUATION CRITERIA

- Public Access
- Public Awareness and Education
- Habitat/Restoration
- Safety
- Economic Health
- Ease of Implementation

NEXT STEPS

- Draft Plan with preferred options and priorities
- Strategies for implementation
- Community Workshop #3 to review Draft Plan
- Planning Commission/City Council Study Session
- CEQA Review and Final Plan