

Olympic Boulevard and Reliez Station Road Corridor (Pleasant Hill Road - Glenside Drive N.) Traffic Study



City of Lafayette

Community Meeting – June 4, 2014

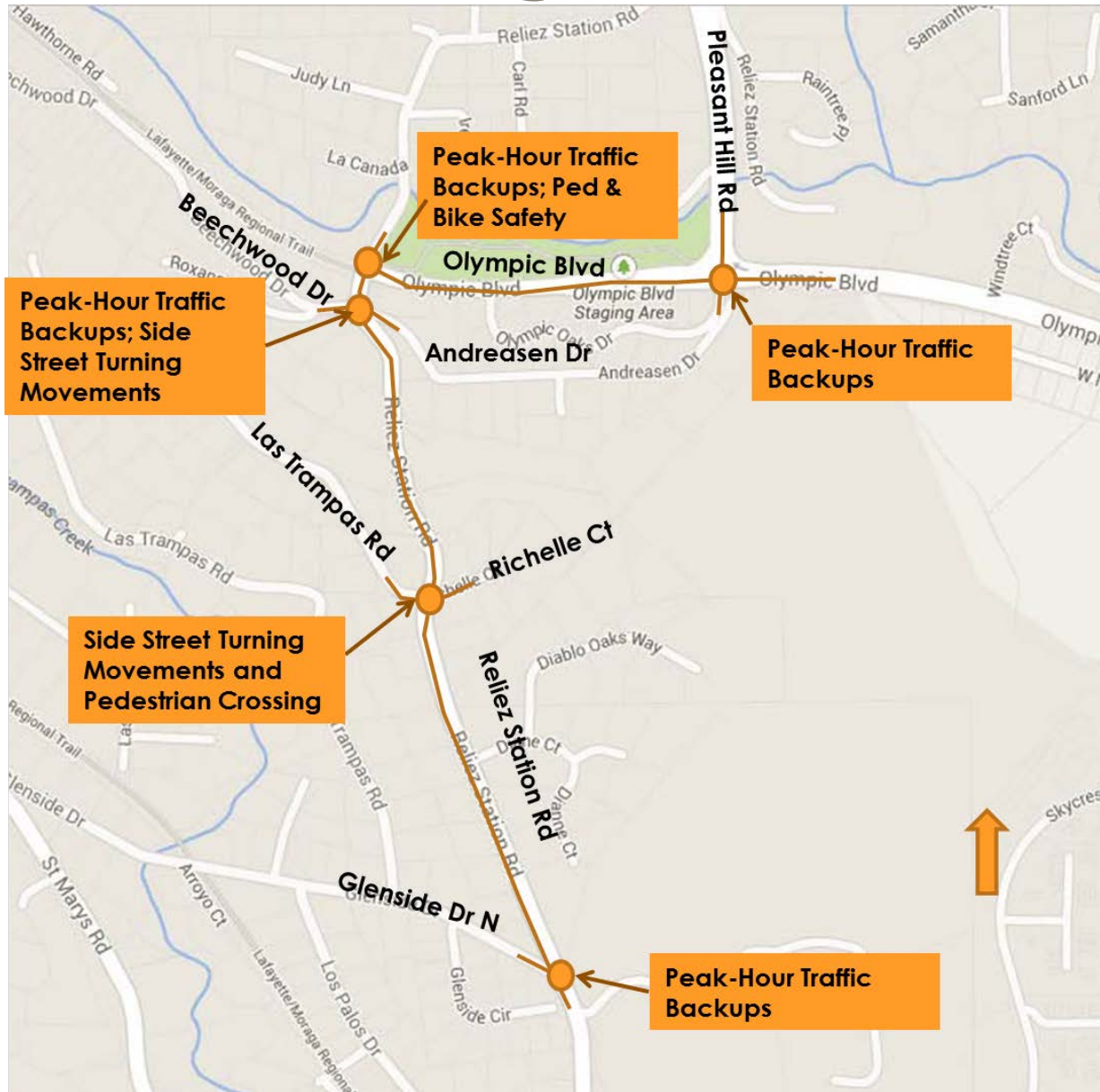
Agenda

- 6:30 – 6:45 Presentation Overview
- 6:45 – 7:45 Roundtable Discussion
- 7:45 – 8:00 Recap
- 8:00 – 8:15 Wrap-up

Presentation Overview

- Background
- Overview of Study
- Description of process
- Review of preliminary data gathered
- Community group discussions
- Next steps

Background



Project Goals

- Identify areas of concern for residents
- Clarify parameters and metrics for traffic study
- Gather & analyze data
- Develop appropriate traffic improvement plan for the corridor
- Recommend corridor wide solution

Process for Plan Approval

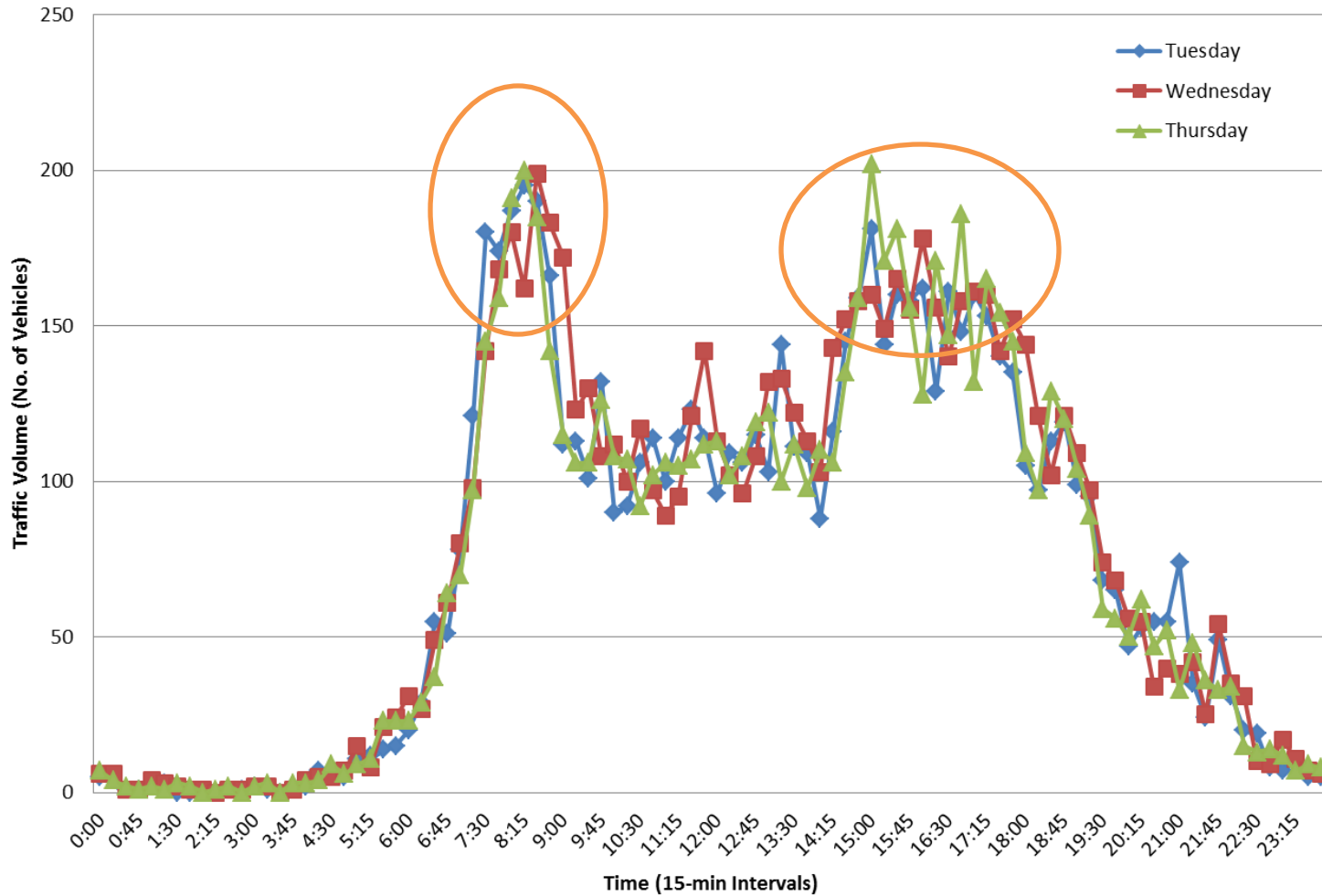
- Prepare concept plan for recommended improvements
- Present at another community outreach meeting
- Gather feedback and support from the community
- Plan will be presented to Circulation Commission for review
- Commission will review plans and recommend course of action to City Council



Review of Data

- Traffic Volume (Classification)
- Speed
- Collision Analysis
- Preliminary Summary of the Survey

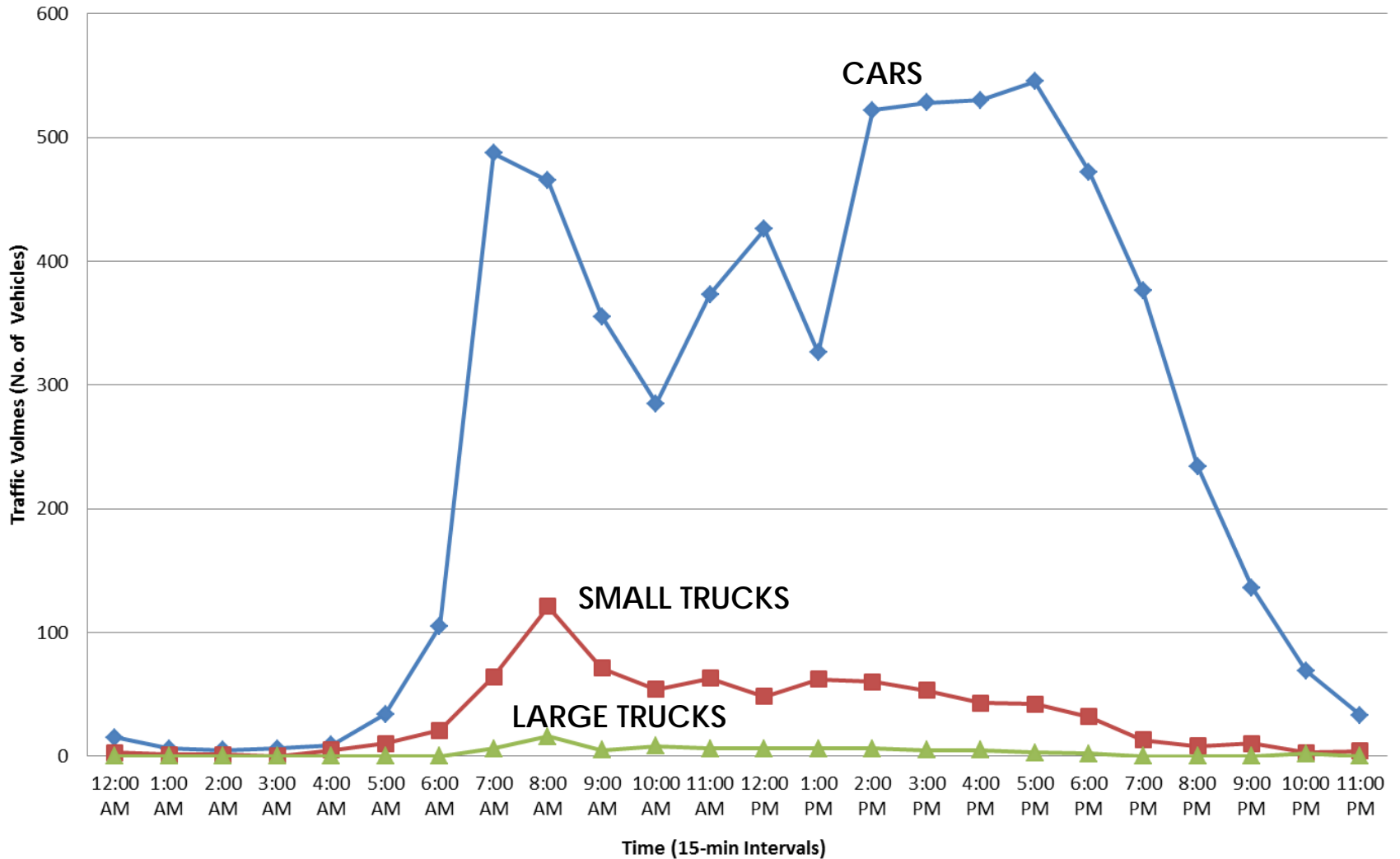
City of Lafayette Eastbound Traffic Volumes Olympic Boulevard (West of Pleasant Hill Road)



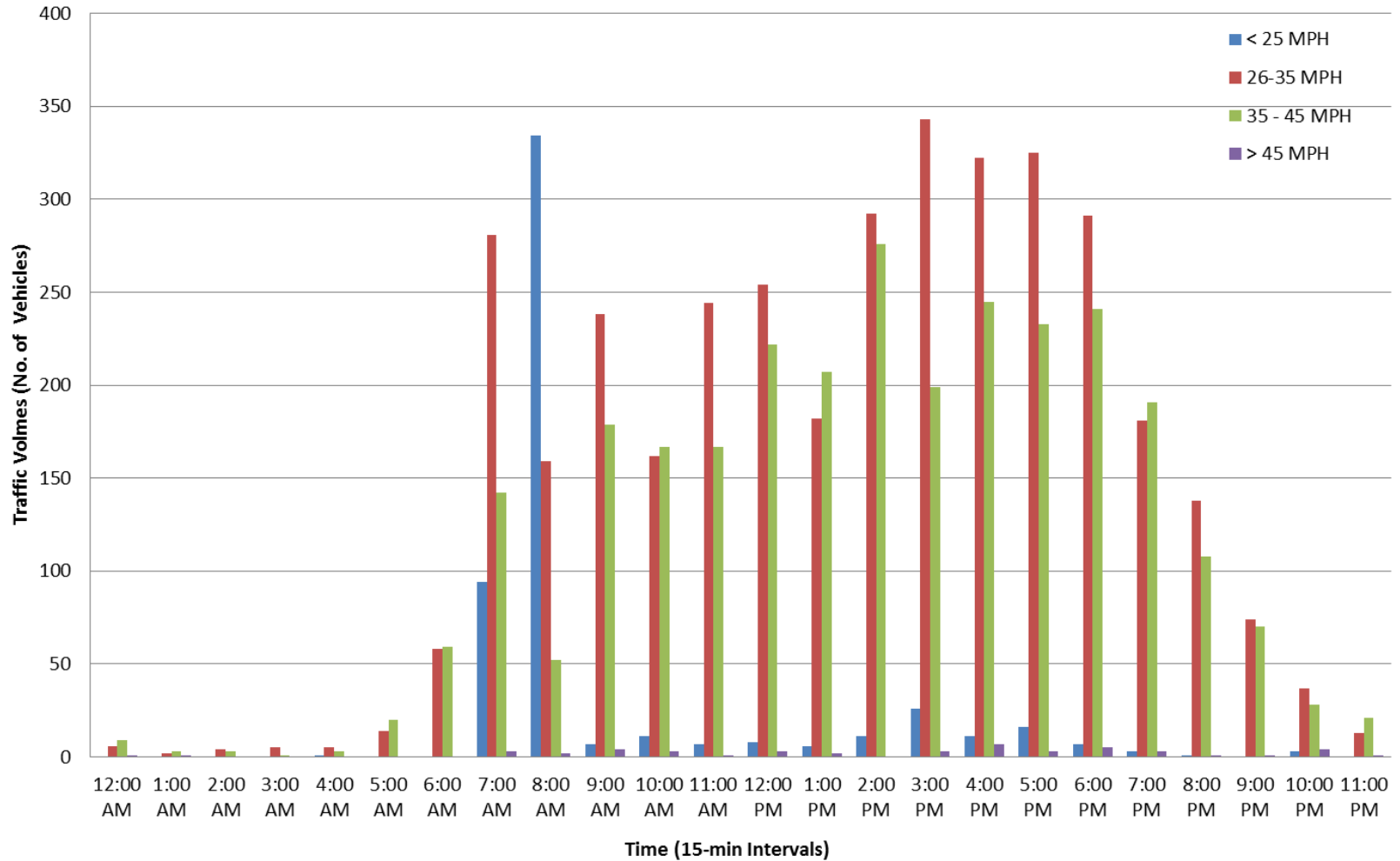
City of Lafayette

Southbound Vehicle Classification

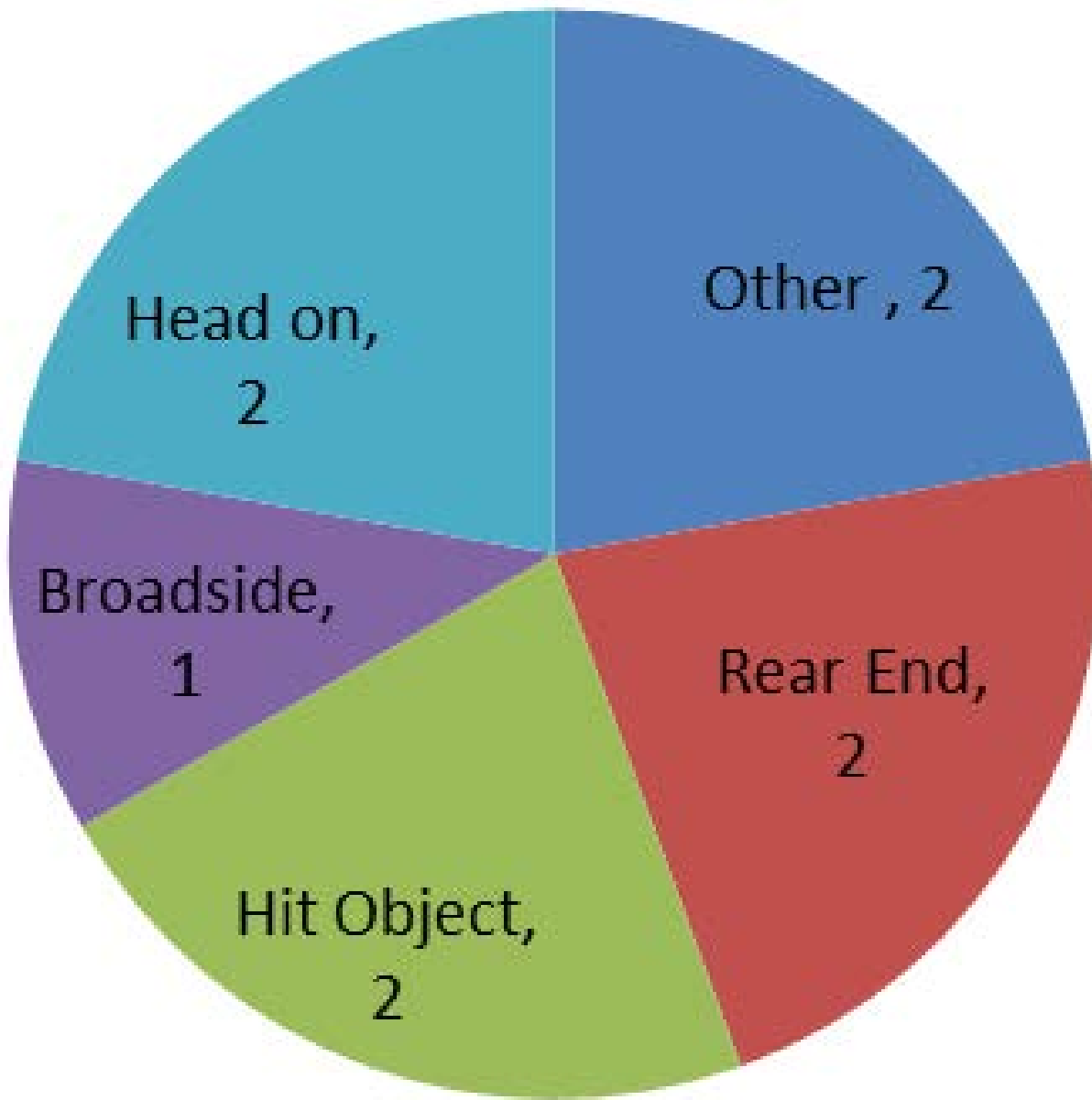
Reliez Station Road (North of Richelle Court)



City of Lafayette Westbound Speed Olympic Boulevard (West of Pleasant Hill Road)



Reported Collisions -5 Years



Total - 9 Collisions

2009 - 2 Collisions

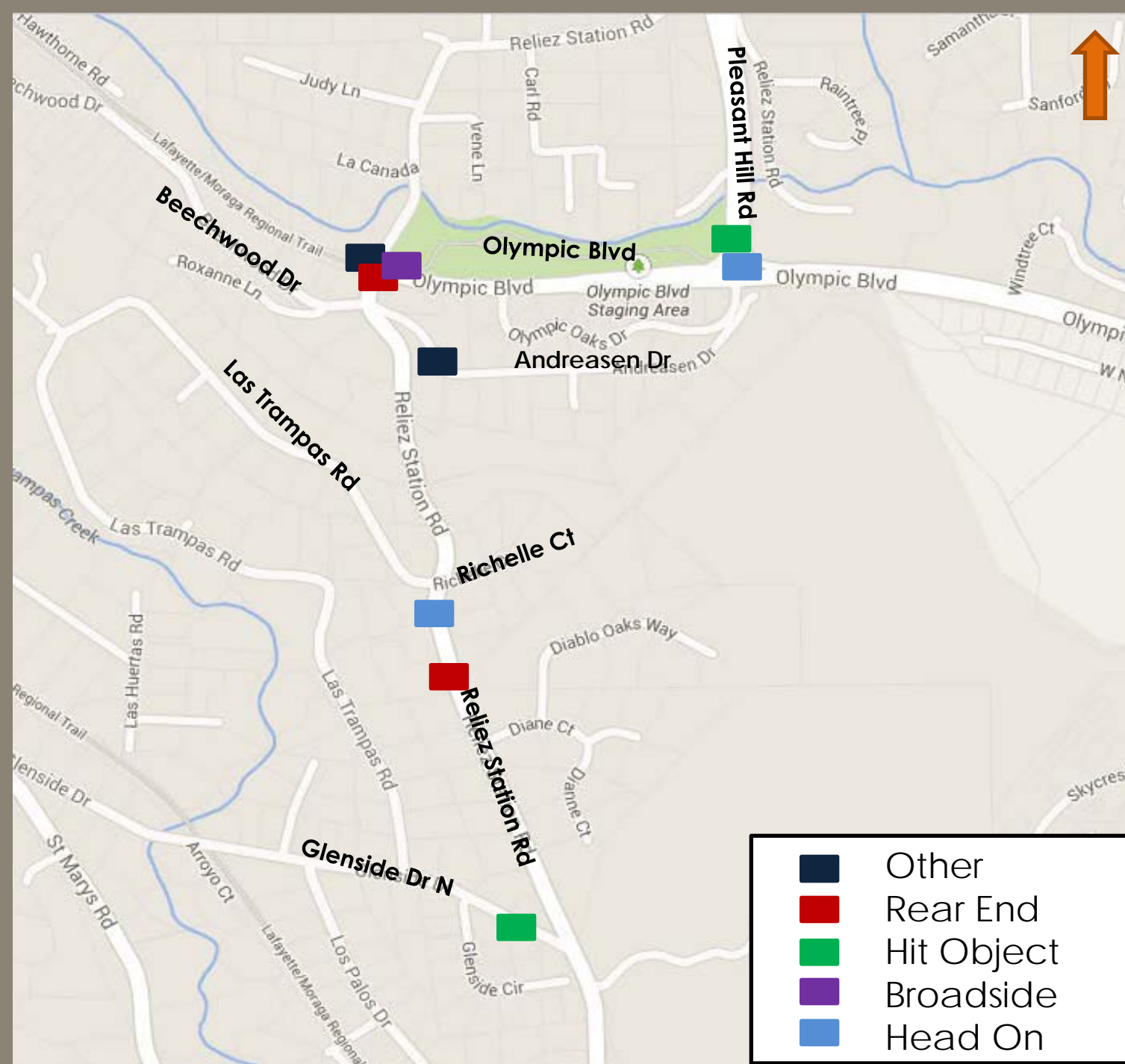
2010 - 2 Collisions






2011 - 1 Collision

2012 - 0 Collisions

2013 - 4 Collisions

Reported Collisions



	Other
	Rear End
	Hit Object
	Broadside
	Head On

Initial Opinion Survey

Purpose – Gather Community Concerns

When - May 16 – June 16

Where – City Website

<http://lovelafayette.org/index.aspx?page=490>

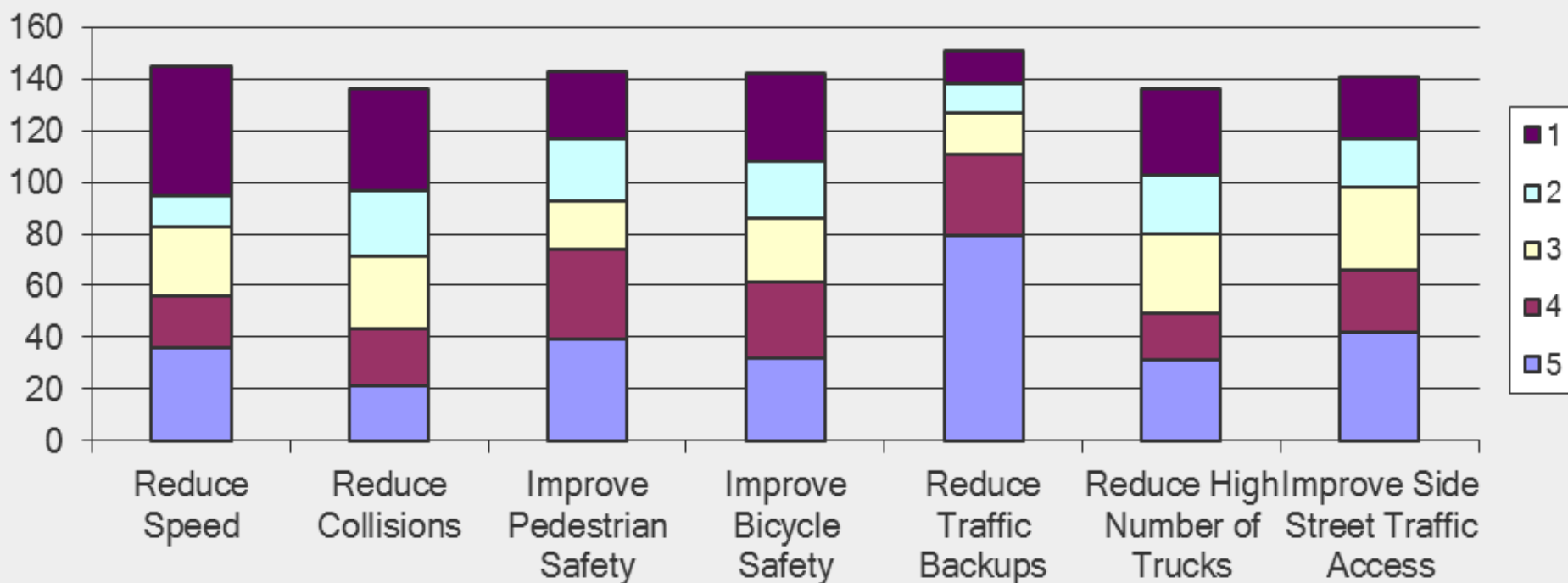
Time Needed to Complete – < 10 Mins

Today's Summary – Data up to May 30th

of Respondents – 160

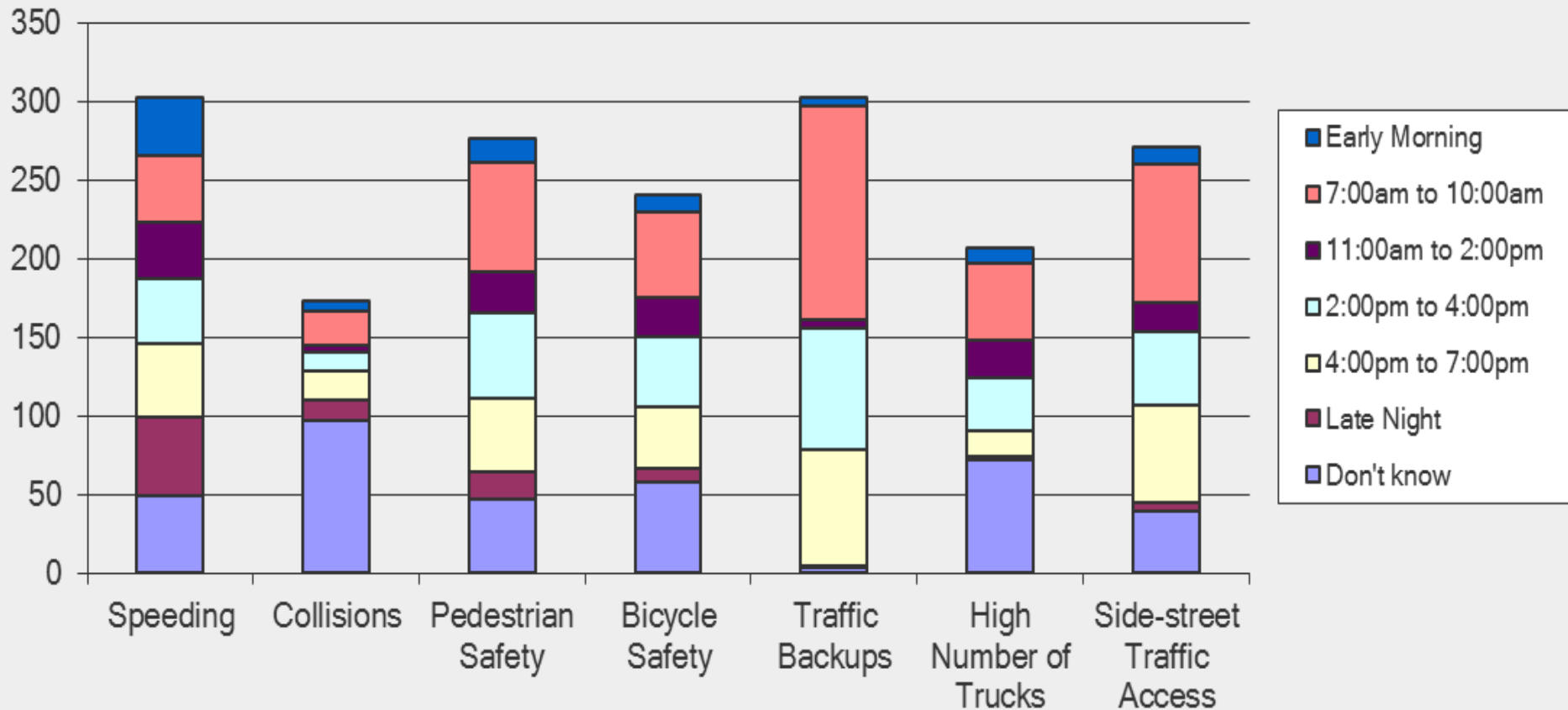
Priorities for the Traffic Study

Considering the overall study area, what should be the highest priority for this traffic study? Please rate the importance of the following goals, where 1 is the lowest and 5 is the highest priority for this traffic study.



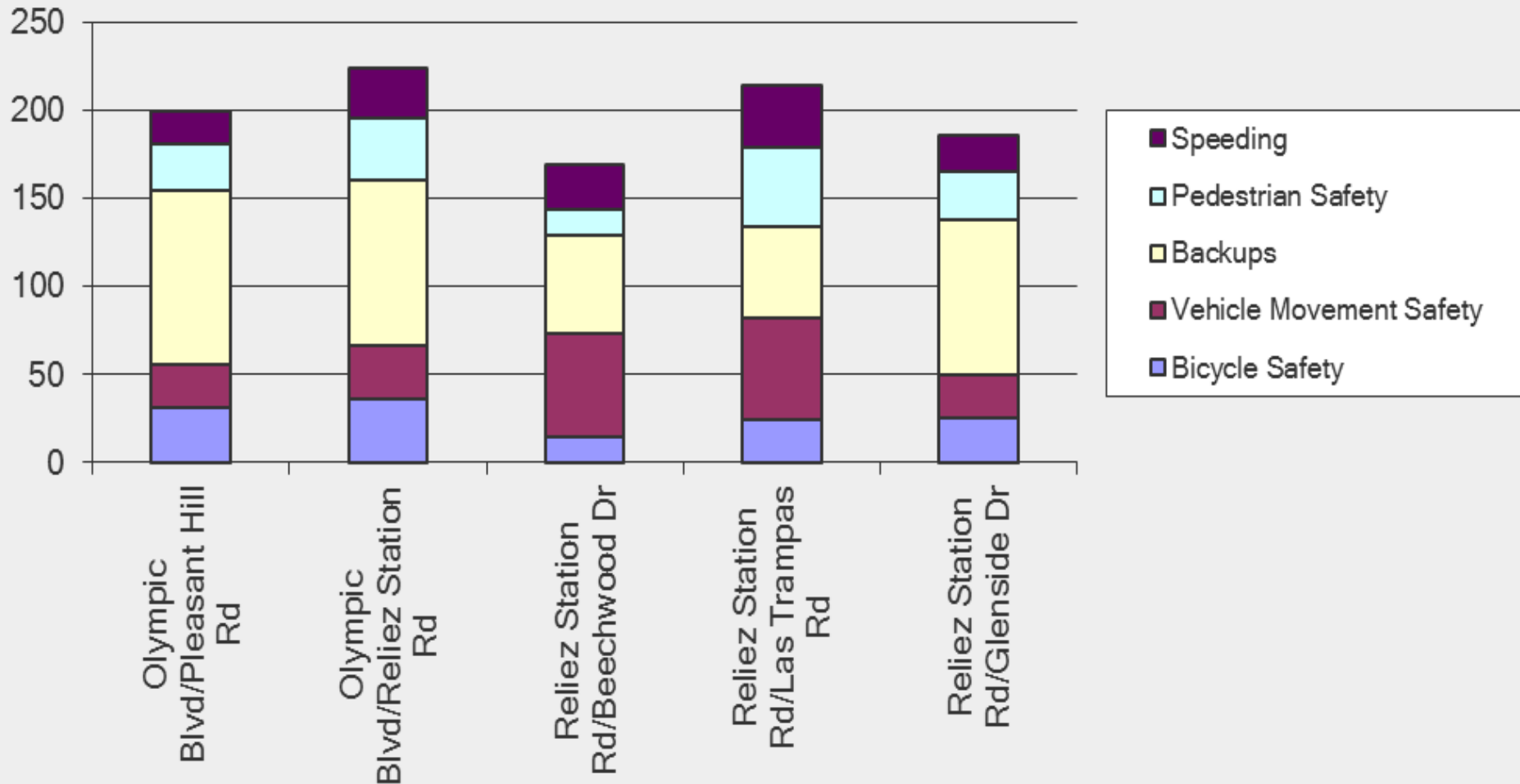
Problems by time-of-day

What time of the day do you think the problem exists within the study area?

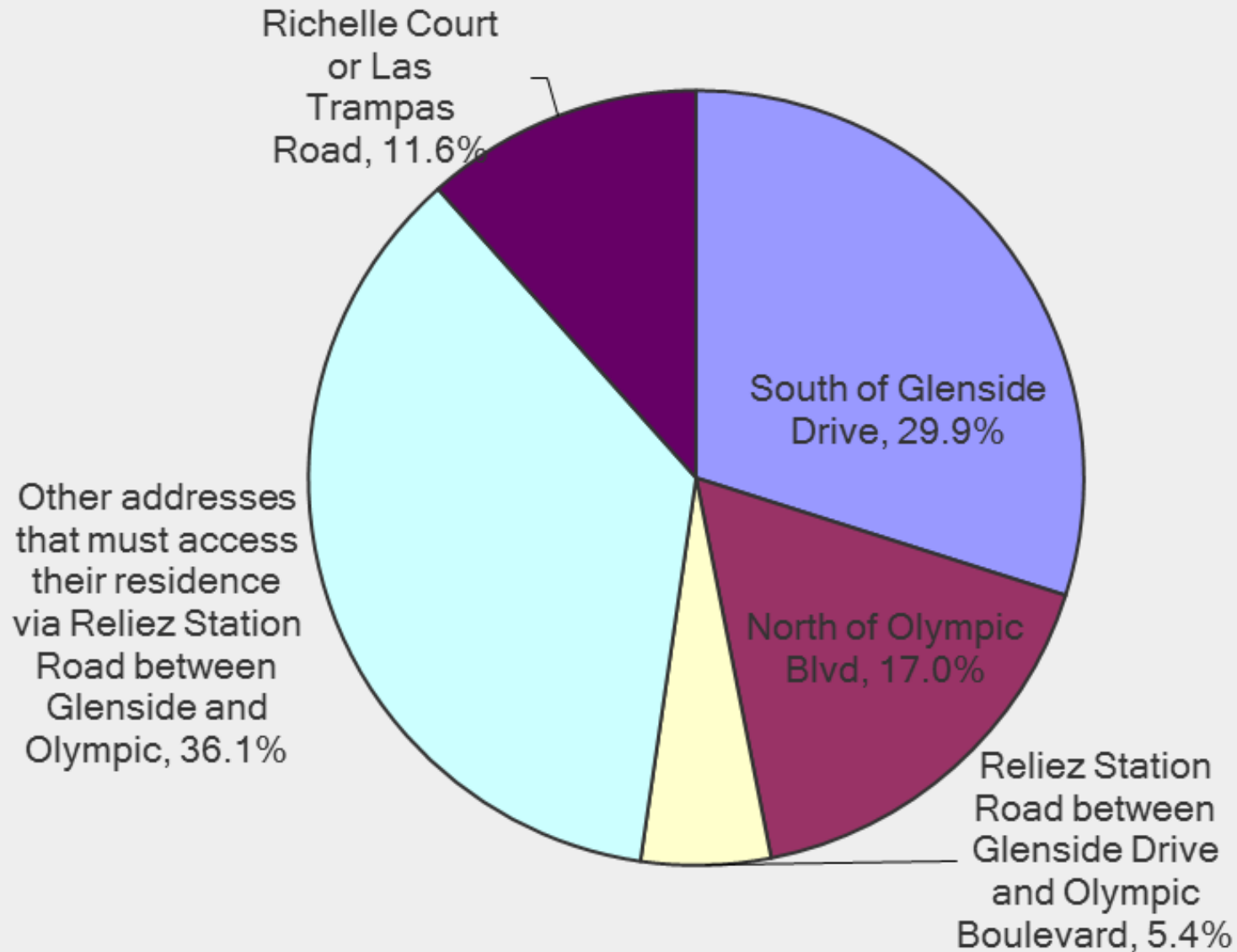


Primary Concerns by Location

Please indicate your primary concern for each location.

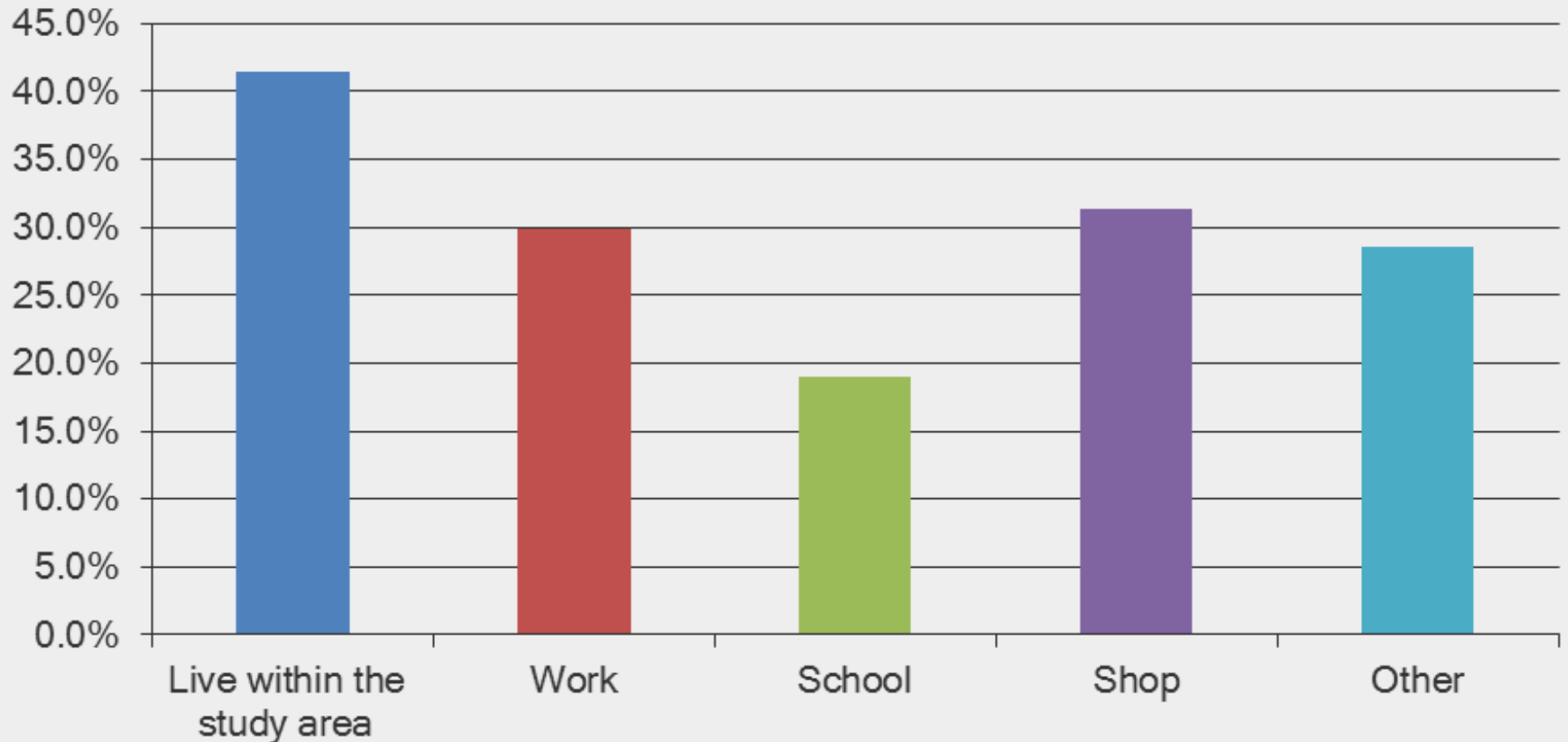


Place of Residence



Purpose of the trip

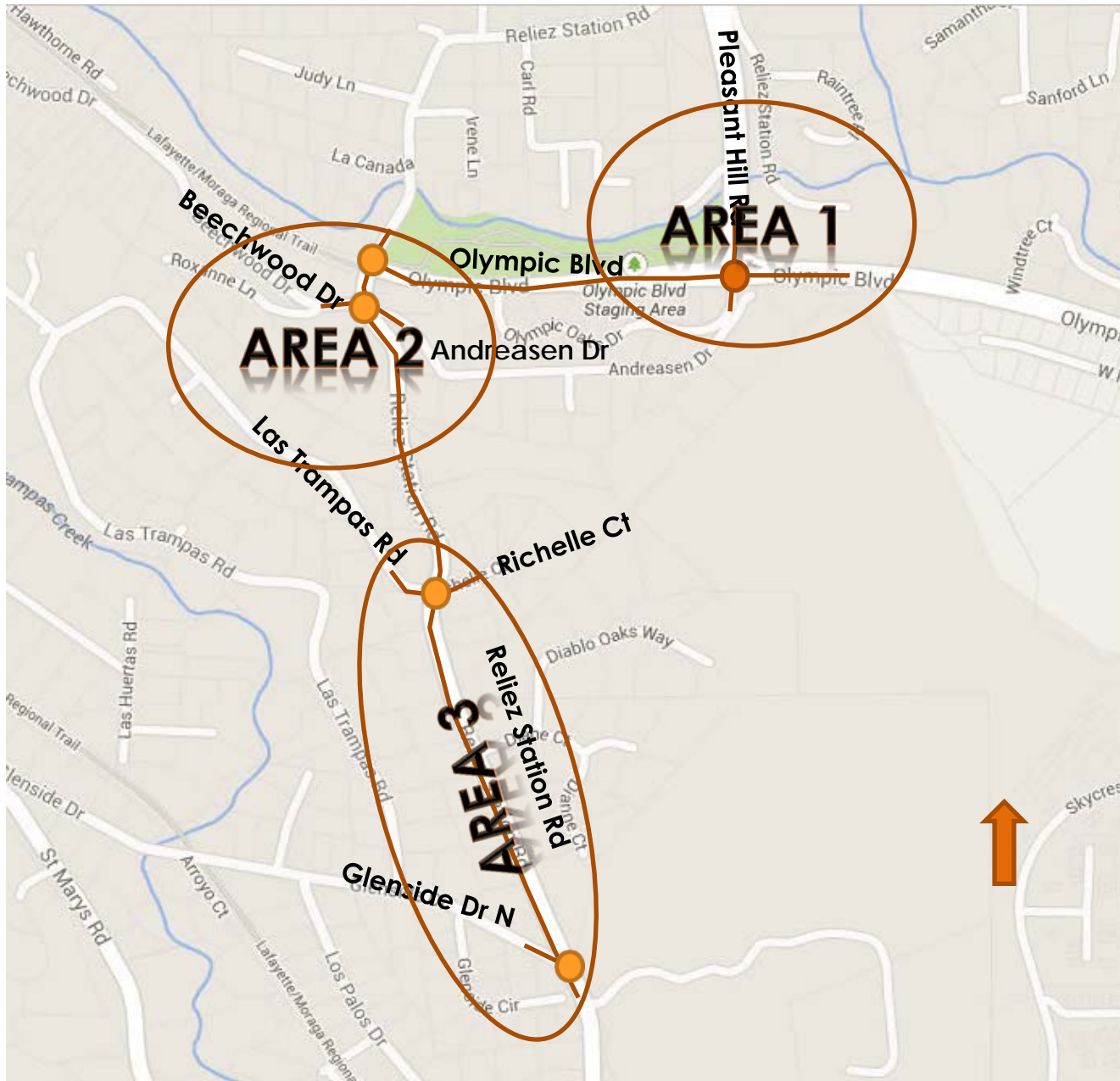
What is commonly the main purpose of your trip?



Roundtable Discussion

- Speak with neighbors in a group
- Share areas of concern that needs to be identified
- Provide suggestions on needed improvements

Discussion Areas



RECAP from Each Area

Next Steps

- Community Walks
 - Walk #1 – June 7, 10 AM @ PHR & Olympic
 - Walk #2 – June 12, 7:30 AM @ PHR & Olympic
- Complete online survey (June 16th, 2014)
- Develop improvement Alternatives
- City & Study team to prepare draft recommended improvements
- Check-in with Community (2nd Meeting)
- Present recommended improvements to Circulation Commission

Thank You

For more information

Project Manager: Leah Greenblat

E-Mail: lgreenblat@ci.lafayette.ca.us

Phone: (925) 299-3229

Website: <http://lovelafayette.org/index.aspx?page=490>