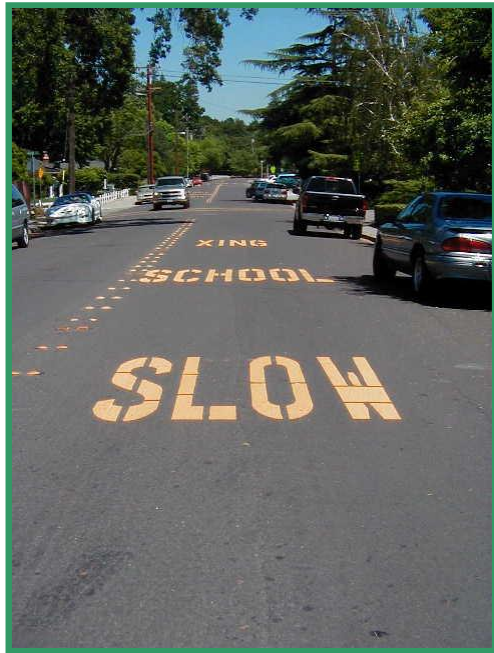
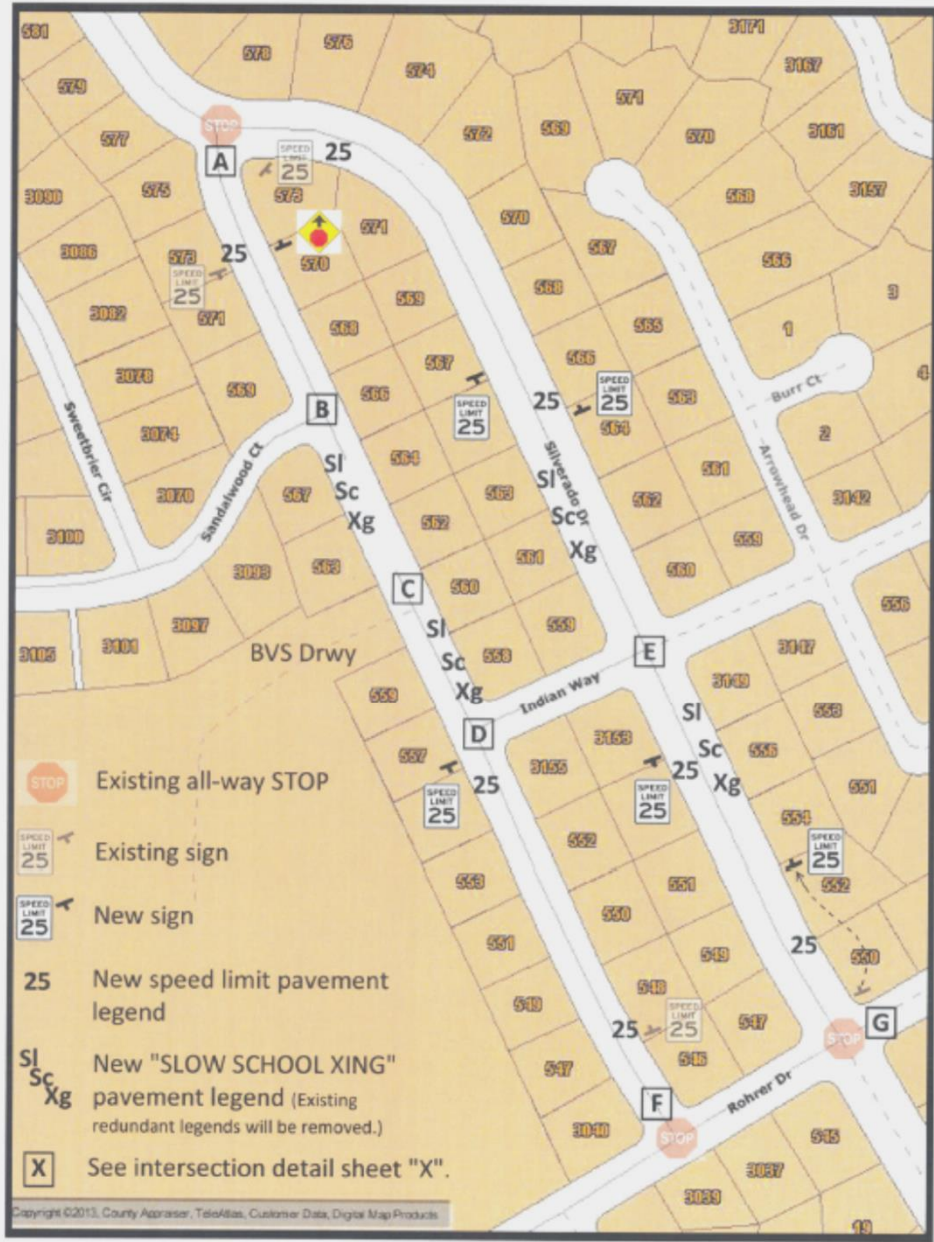


City Council Approved Traffic Calming Plan

- Level 2 Plan of signing & striping features to:
 - Reinforce existing speed limit with new signs and stencils.
 - Reinforce existing school crosswalks.
 - Add striping to enhance pedestrian safety at intersections.
- Development of neighborhood newsletter with final plan highlights & driving safety tips
- Collection of performance data to gauge effectiveness
- One week of targeted traffic enforcement

What does this Plan look like?





Merriwood Dr and Silverado Dr
Signs and Striping Plan



200 ft

CityGIS

A: Silverado/Merriewood



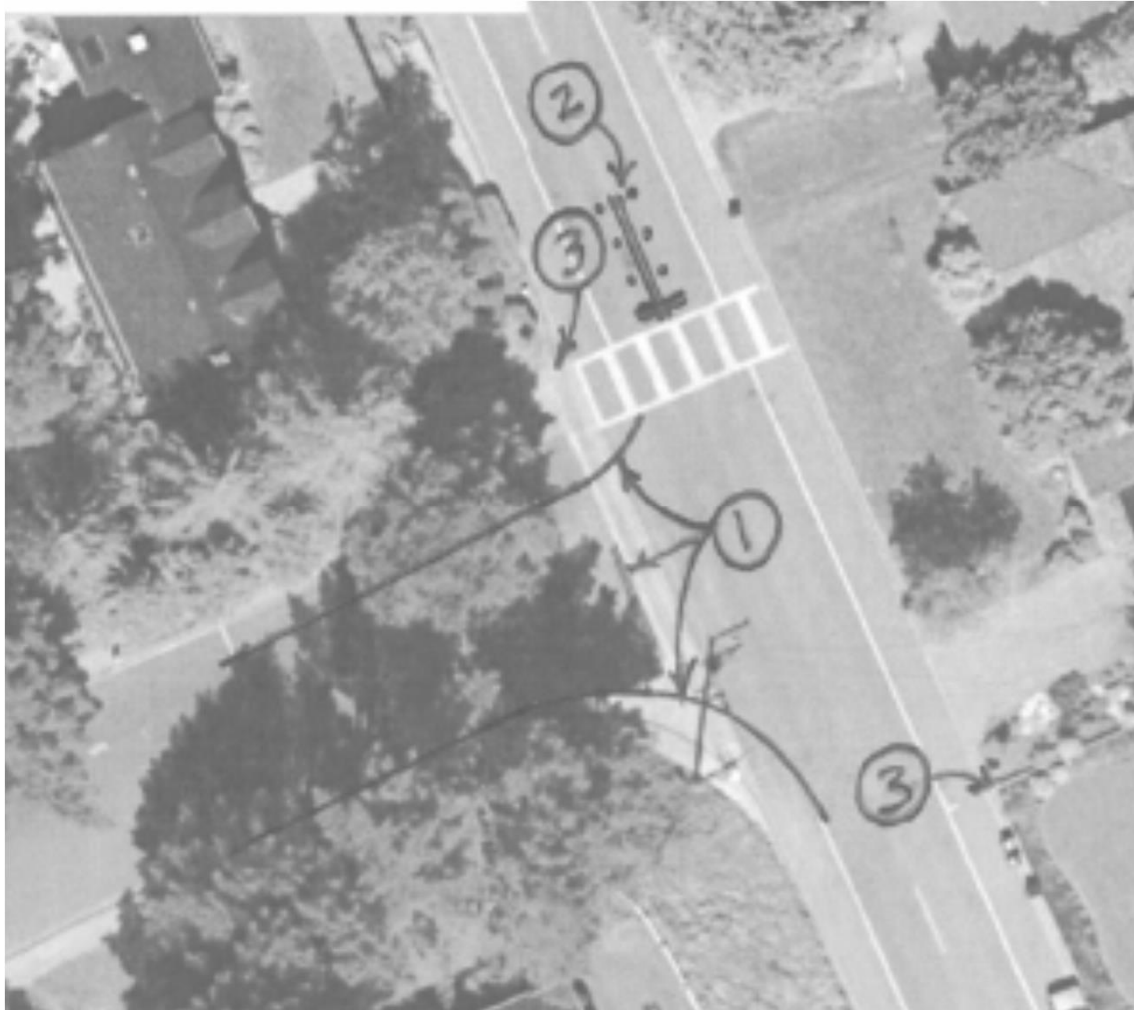
1. Extend white edge line.
 2. Extend white edge line w/ reflective pavement markers. Add diagonal bars (white) in shoulder area.
- Crosswalk stripes will be refreshed.

B: Merriewood-Sandalwood



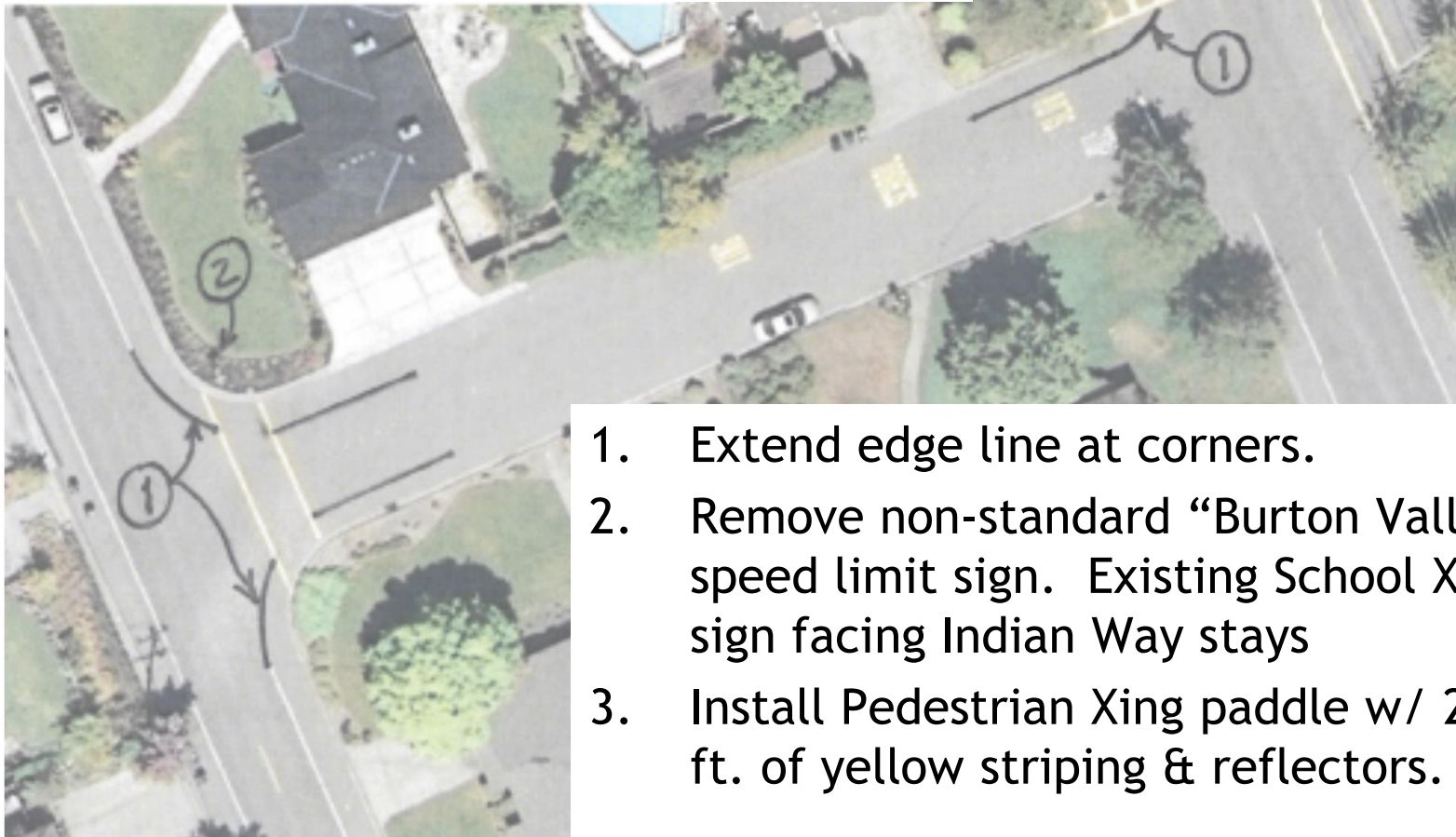
1. Extend edge lines around corners.
2. Add limit line.

C: Merriewood / Burton Valley School Driveway



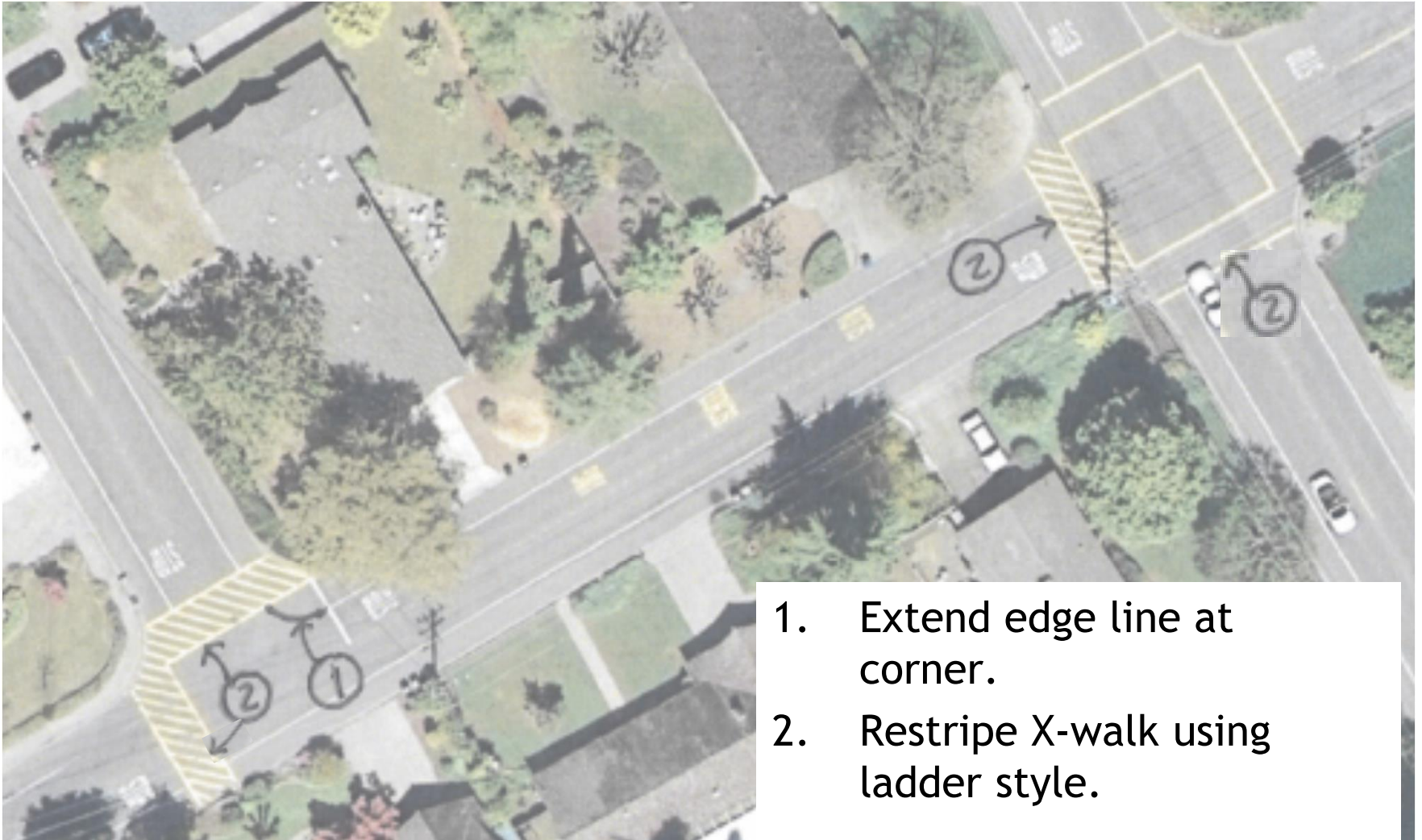
1. Extend edge lines around corners. Add limit line.
2. Install double-sided Ped-Xing paddle with 25 ft. double yellow stripes w/ reflective markers.
3. School Xing signs to remain.

D & E: Indian Way (Merriewood-Silverado)



1. Extend edge line at corners.
2. Remove non-standard “Burton Valley” speed limit sign. Existing School Xing sign facing Indian Way stays
3. Install Pedestrian Xing paddle w/ 25 ft. of yellow striping & reflectors.

F & G: Rohrer Drive (Silverado-Merriewood)



1. Extend edge line at corner.
2. Restripe X-walk using ladder style.

Lafayette Traffic Calming Process

