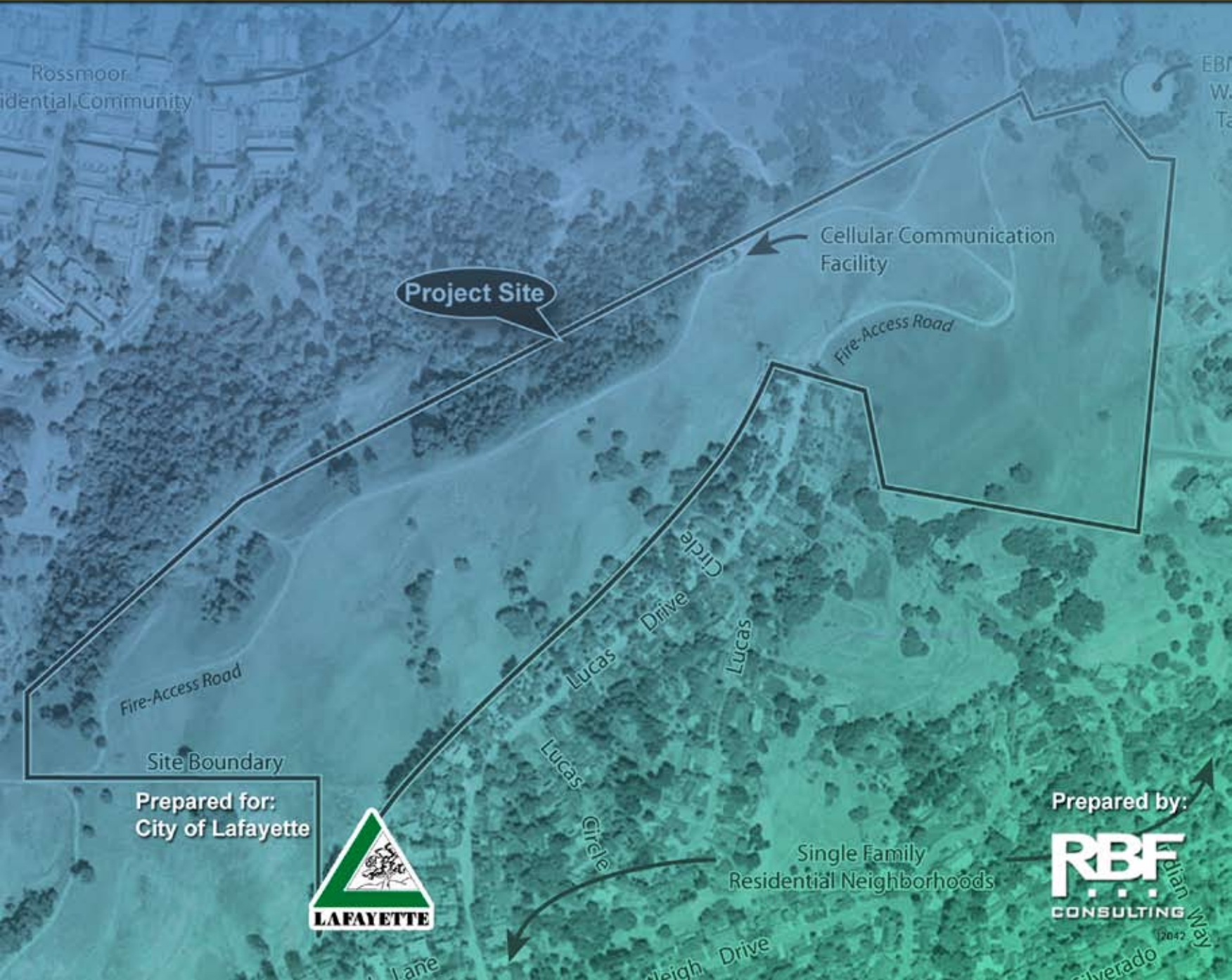


Soldier Field Subdivision

Draft Environmental Impact Report

State Clearinghouse No. 2005032054



Rossmore Residential Community

Project Site

Cellular Communication Facility

Fire-Access Road

Fire-Access Road

Site Boundary

Prepared for:
City of Lafayette



Single Family Residential Neighborhoods

Prepared by:



Lucas Lane

Lucas Drive Circle

12042 Indian Way Silverado

**DRAFT
ENVIRONMENTAL IMPACT REPORT
SOLDIER FIELD SUBDIVISION**

State Clearinghouse No. 2005032054

Prepared by:

**RBF Consulting
500 Ygnacio Valley Road, Suite 270
Walnut Creek, CA 94596**

Prepared for:

**City of Lafayette
3675 Mt. Diablo Boulevard, Ste 210
Lafayette, CA 94549**

October 2005

TABLE OF CONTENTS

EXECUTIVE SUMMARY

S.1	Introduction.....	S-1
S.2	Summary of Potential Impacts.....	S-2
S.3	Cumulative and Growth Inducing Impacts.....	S-6
S.4	Significant Unavoidable Adverse Environmental Impacts	S-6
S.5	Summary of Alternatives Evaluated	S-6
S.6	Areas of Controversy and Issues To Be Resolved.....	S-8
S.7	Mitigation Monitoring	S-8

CHAPTER 1 INTRODUCTION

1.1	Background	1-1
1.2	Purpose of the EIR	1-1
1.3	Use of the EIR.....	1-1
1.4	Scope of the EIR	1-2
1.5	Organization of the EIR.....	1-3
1.6	Terminology Used in the EIR.....	1-4
1.7	Effects Not Found To Be Significant.....	1-5
1.8	Other Agencies That May Use the EIR	1-7
1.9	Final EIR and Project Approval	1-7

CHAPTER 2 PROJECT DESCRIPTION

2.1	Project Overview	2-1
2.2	Project Location.....	2-2
2.3	Project Characteristics.....	2-5
2.4	Site Characteristics.....	2-6
2.5	Permits and Approvals	2-9

CHAPTER 3 EXISTING CONDITIONS, ENVIRONMENTAL IMPACTS AND MITIGATION MEASURES

3.1	Introduction.....	3.1-1
3.2	Land Use and Planning	3.2-1
3.3	Aesthetics.....	3.3-1
3.4	Air Quality.....	3.4-1
3.5	Biological Resources	3.5-1
3.6	Cultural Resources	3.6-1
3.7	Geology and Soils	3.7-1
3.8	Hydrology and Water Quality.....	3.8-1
3.9	Noise	3.9-1
3.10	Public Services, Utilities and Service Systems.....	3.10-1
3.11	Transportation/Traffic	3.11-1

CHAPTER 4 CUMULATIVE AND GROWTH-INDUCING IMPACTS

4.1 Introduction.....4-1

4.2 Cumulative Impacts4-1

4.3 Growth-Inducing Impacts.....4-6

CHAPTER 5 ALTERNATIVES

5.1 Introduction.....5-1

5.2 Alternatives Considered and Eliminated.....5-1

5.3 No Project - No Development Alternative5-7

5.4 Neighborhood Extension Alternative5-8

5.5 Revised Site Plan Design Alternative5-14

5.6 Environmentally Superior Alternative5-18

CHAPTER 6 OTHER CEQA CONSIDERATIONS

6.1 Significant and Unavoidable Impacts6-1

6.2 Significant Irreversible Changes.....6-1

CHAPTER 7 REPORT PREPARATION PERSONNEL7-1

CHAPTER 8 REFERENCES CITED.....8-1

LIST OF APPENDICES

A Notice of Preparation, Initial Study and Public Comments

B Air Quality Data

C Cultural and Paleontological Resources Study

D Traffic Impact Analysis

LIST OF TABLES

S-1 Summary of Impacts and Mitigation S-9

2-1 Proposed Lot Sizes2-5

2-2 Permits and Approvals2-9

3.2-1 Maximum Permitted Density in the Hillside Overlay District by Slope3.2-5

3.2-2 General Plan Policy Analysis.....3.2-13

3.3-1 Viewing Evaluation Streets, Sites and Trails3.3-2

3.4-1 Local Ambient Air Quality Levels (2000-2004)3.4-2

3.4-2 National and California Ambient Air Quality Standards3.4-4

3.4-3 Construction and Operational Air Emissions Thresholds3.4-7

3.4-4 Bay Area Air Quality Management District (BAAQMD) Control Measures3.4-7

3.4-5 Project Construction Air Emissions3.4-9

3.5-1 Special-Status Plants That Potentially Occur On-Site3.5-5

3.5-2 Special-Status Animals That Potentially Occur On-Site3.5-8

3.5-3 Prohibited Ornamental Plant Species3.5-16

3.7-1	Nearby Active Faults	3.7-8
3.8-1	Hydrologic Characteristics of Site Soils	3.8-1
3.9-1	Land Use Compatibility Noise Guidelines.....	3.9-5
3.9-2	Outdoor Noise Limits	3.9-6
3.9-3	Typical Construction Equipment Noise Levels	3.9-9
3.9-4	Estimated Construction Noise in Project Area by Distance	3.9-9
3.11-1	Unsignalized Level of Service and Delay Ranges	3.11-1
3.11-2	Performance Standards for Unsignalized Intersections.....	3.11-2
3.11-3	Existing Conditions AM/PM Peak-Hour Intersection LOS	3.11-5
3.11-4	Forecast Approved Projects Peak-Hour Trip Generation	3.11-6
3.11-5	Forecast Cumulative Year Without Project Peak-Hour Intersection LOS	3.11-7
3.11-6	Proposed Project Trip Rates	3.11-8
3.11-7	Forecast Proposed Project Trip Generation	3.11-8
3.11-8	Forecast Cumulative Year With Project AM/PM Peak-Hour Intersection LOS	3.11-13
4.1	Related Projects for Cumulative Impacts Analysis	4-2
5.1	Comparative Analysis of the Environmental Impacts Associated with the Proposed Project and the Project Alternatives.....	5-18

LIST OF FIGURES

2-1	Regional Location Map.....	2-3
2-2	Local Vicinity Map.....	2-4
2-3	Site Aerial Photograph.....	2-7
2-4	Proposed Site Plan.....	2-8
3.3-1	Viewing Evaluation Sites	3.3-3
3.3-2	Visual Radius Map.....	3.3-4
3.3-3A	Project Site Viewed From Sweet Drive.....	3.3-9
3.3-3B	Outline of Project From Sweet Drive	3.3-10
3.3-3C	Visual Simulation From Sweet Drive	3.3-11
3.3-4A	Project Site Viewed From Burton and Lucas Drive.....	3.3-12
3.3-4B	Outline of Project From Burton and Lucas Drive	3.3-13
3.3-4C	Visual Simulation From Burton and Lucas Drive	3.3-14
3.3-5A	Project Site Viewed From Buckeye Fields.....	3.3-15
3.3-5B	Outline of Project From Buckeye Fields	3.3-16
3.3-5C	Visual Simulation From Buckeye Fields	3.3-17
3.3-6A	Project Site Viewed From Burton Valley School.....	3.3-18
3.3-6B	Outline of Project From Burton Valley School	3.3-19
3.3-6C	Visual Simulation From Burton Valley School	3.3-20
3.5-1	Vegetation Map	3.5-2
3.7-1a	Geology Map	3.7-3
3.7-1b	Geology Map (Legend).....	3.7-4
3.7-2	Soil Map	3.7-5
3.7-3	Landslide Features Map	3.7-9
3.7-4	Fault Activity Map	3.7-10
3.8-1	Drainage Map.....	3.8-3

3.9-1	Common Environmental Noise Levels	3.9-2
3.11-1	Project Location and Study Intersections	3.11-3
3.11-2	Existing Conditions AM/PM Peak Hour Intersection Volumes	3.11-4
3.11-3	Forecast Approved Projects AM/PM Peak Hour Trip Assignment.....	3.11-9
3.11-4	Forecast Year 2007 Without Project AM/PM Peak Hour Intersection Vols	3.11-10
3.11-5	Forecast Project-Generated AM/PM Peak Hour Trip Assignment.....	3.11-11
3.11-6	Forecast Year 2007 With Project AM/PM Peak Hour Intersection Vols.....	3.11-12
5-1	Ridgeline Setbacks.....	5-3
5-2	Slope Analysis	5-4
5-3	Residential Development Opportunities	5-5
5-4	Ridgeline Declination Sections	5-6
5-5	Environmental Constraints	5-9
5-6	Environmental and Regulatory Constraints	5-10
5-7	Neighborhood Extension Alternative	5-11
5-8	Revised Site Plan Design Alternative	5-15

ACRONYMS AND ABBREVIATIONS

AB	California Assembly Bill
ABAG	Association of Bay Area Governments
ACOE	U.S. Army Corps of Engineers
A.D.	current era
af	acre feet
AWSC	All-Way Stop Control
BAAQMD	Bay Area Air Quality Management District
BART	Bay Area Rapid Transit
Basin	San Francisco Bay Area Air Basin
Basin Plan	San Francisco Bay RWQCB Water Quality Control Plan
B.C.	before current era
BMP	best management practice
BVRDG	Burton Valley Ridge Development Guidelines
C	centigrade
CAA	Federal Clean Air Act
CAAQS	California Ambient Air Quality Standards
California Register	California Register of Historical Resources
Cal EPA	California Environmental Protection Agency
Caltrans	California Department of Transportation
CAP	(Bay Area 2000) Clean Air Plan
CARB	California Air Resources Board
CCAA	California Clean Air Act
CCCSD	Central Contra Costa Sanitary District
CCCSWA	Contra Costa County Solid Waste Authority
CCR	California Code of Regulations
CCTA	Contra Costa Transportation Authority
CCTR	Contra Costa Transfer and Recovery
CDFG	California Department of Fish and Game
CEQA	California Environmental Quality Act
CESA	California Endangered Species Act
CFCs	chlorofluorocarbons

CFR	Code of Federal Regulations
cfs	cubic feet per second
City	City of Lafayette
CNDDDB	California Natural Diversity Database
CNEL	community noise equivalent level
CNPS	California Native Plant Society
CO	carbon monoxide
CO ₂	carbon dioxide
CWA	Federal Clean Water Act
cy	cubic yards
dB	decibel(s)
dBA	A-weighted decibel(s)
dBA/DD	dBA for each doubling of the distance
DEIR	Draft Environmental Impact Report
DPR	(California) Department of Parks and Recreation
du	dwelling units
EBMUD	East Bay Municipal Utility District
EBRPD	East Bay Regional Park District
EIR	Environmental Impact Report
EPA	U.S. Environmental Protection Agency
FESA	Federal Endangered Species Act
FHWA	Federal Highway Administration
HCM	Highway Capacity Manual
HCP	Habitat Conservation Plan
HET	High-Efficiency Toilets
H-O-D	Hillside Overlay District
HVAC	heating, ventilation and air conditioning equipment
IS	Initial Study
IWMB	California Integrated Waste Management Board
LAFCO	Contra Costa County Local Agency Formation Commission
Ldn	day/night average sound level
LEA	Local Enforcement Agency
Leq	equivalent sound level
LOS	Level of Service
Lmax	maximum noise level recorded during a noise event
LMC	Lafayette Municipal Code
Ln	sound level exceeded over a specified time frame
LPMC	Lamorinda Project Management Committee
m	meter
mgd	million gallons per day
mg	milligram(s)
mm	millimeter
µg	microgram(s)
MBTA	Migratory Bird Treaty Act
MLD	Most Likely Descendant
MMRP	Mitigation Monitoring and Reporting Program
mph	miles per hour
MTC	Metropolitan Transportation Commission
NAAQS	National Ambient Air Quality Standards
NAHC	Native American Heritage Commission
NO ₂	nitrogen dioxide

NOC	Notice of Completion
NOP	Notice of Preparation
NO _x	nitrogen oxides
NPDES	National Pollution Discharge Elimination System
NWIC	Northwest Information Center
O ₃	ozone
P	phosphorous
Pb	lead
PG&E	Pacific Gas and Electric Company
PM _{2.5}	particulate matter less than 2.5 microns in diameter
PM ₁₀	particulate matter less than 10 microns in diameter
ppm	parts per million
PRC	Public Resources Code
project	Soldier Field Subdivision project
RBF	RBF Consulting
REC	recognizable environmental condition
ROGs	reactive organic gases
ROW	right-of-way
RWQCB	Regional Water Quality Control Board
SO ₂	sulfur dioxide
SO _x	sulfur oxides
SR	State Route
SWPPP	Stormwater Pollution Prevention Plan
SWRCB	State Water Resources Control Board
TACs	air toxics
TOC	total organic carbon
UBC	Uniform Building Code
ULFT	Ultra-Low-Flow Toilets
U.S.	United States
USDOT	U.S. Department of Transportation
USFWS	U.S. Fish and Wildlife Service
VdB	vibration decibel(s)
VEM	Viewing Evaluation Map
VOC	volatile organic compound
WSA	Water Supply Assessment

RBF Consulting

500 Ygnacio Valley Road, Suite 270

Walnut Creek, CA 94596-3847

Phone: 925-906-1460 Fax: 925-906-1465

www.RBF.com

