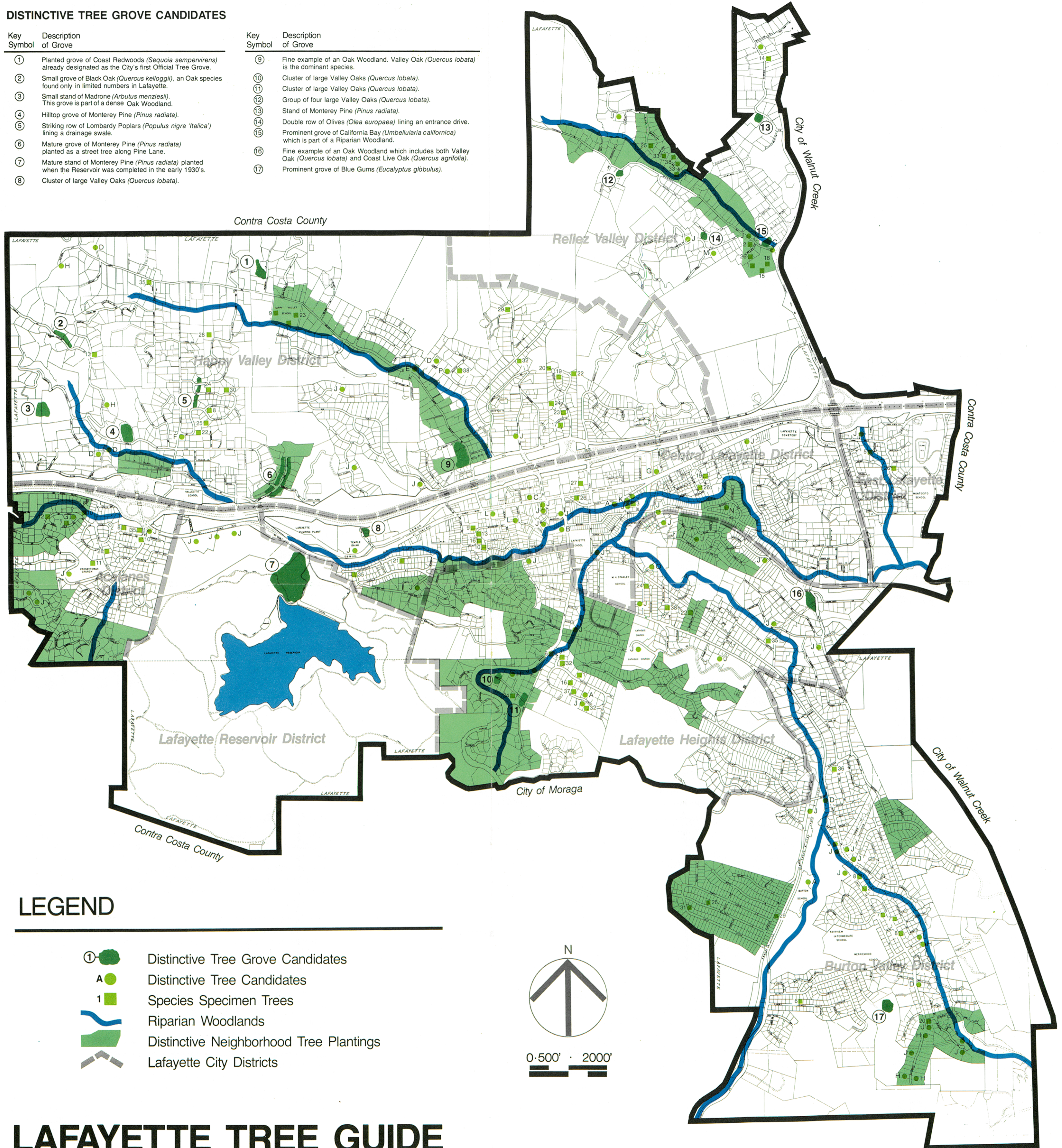


**DISTINCTIVE TREE GROVE CANDIDATES**

Key Symbol	Description of Grove
①	Planted grove of Coast Redwoods ( <i>Sequoia sempervirens</i> ) already designated as the City's first Official Tree Grove.
②	Small grove of Black Oak ( <i>Quercus kelloggii</i> ), an Oak species found only in limited numbers in Lafayette.
③	Small stand of Madrone ( <i>Arbutus menziesii</i> ). This grove is part of a dense Oak Woodland.
④	Hilltop grove of Monterey Pine ( <i>Pinus radiata</i> ).
⑤	Striking row of Lombardy Poplars ( <i>Populus nigra 'italica'</i> ) lining a drainage swale.
⑥	Mature grove of Monterey Pine ( <i>Pinus radiata</i> ) planted as a street tree along Pine Lane.
⑦	Mature stand of Monterey Pine ( <i>Pinus radiata</i> ) planted when the Reservoir was completed in the early 1930's.
⑧	Cluster of large Valley Oaks ( <i>Quercus lobata</i> ).

Key Symbol	Description of Grove
⑨	Fine example of an Oak Woodland. Valley Oak ( <i>Quercus lobata</i> ) is the dominant species.
⑩	Cluster of large Valley Oaks ( <i>Quercus lobata</i> ).
⑪	Cluster of large Valley Oaks ( <i>Quercus lobata</i> ).
⑫	Group of four large Valley Oaks ( <i>Quercus lobata</i> ).
⑬	Stand of Monterey Pine ( <i>Pinus radiata</i> ).
⑭	Double row of Olives ( <i>Olea europaea</i> ) lining an entrance drive.
⑮	Prominent grove of California Bay ( <i>Umbellularia californica</i> ) which is part of a Riparian Woodland.
⑯	Fine example of an Oak Woodland which includes both Valley Oak ( <i>Quercus lobata</i> ) and Coast Live Oak ( <i>Quercus agrifolia</i> ).
⑰	Prominent grove of Blue Gums ( <i>Eucalyptus globulus</i> ).



**LEGEND**

- ① Distinctive Tree Grove Candidates
- A Distinctive Tree Candidates
- 1 Species Specimen Trees
- ~ Riparian Woodlands
- ~ Distinctive Neighborhood Tree Plantings
- ~ Lafayette City Districts



**LAFAYETTE TREE GUIDE**