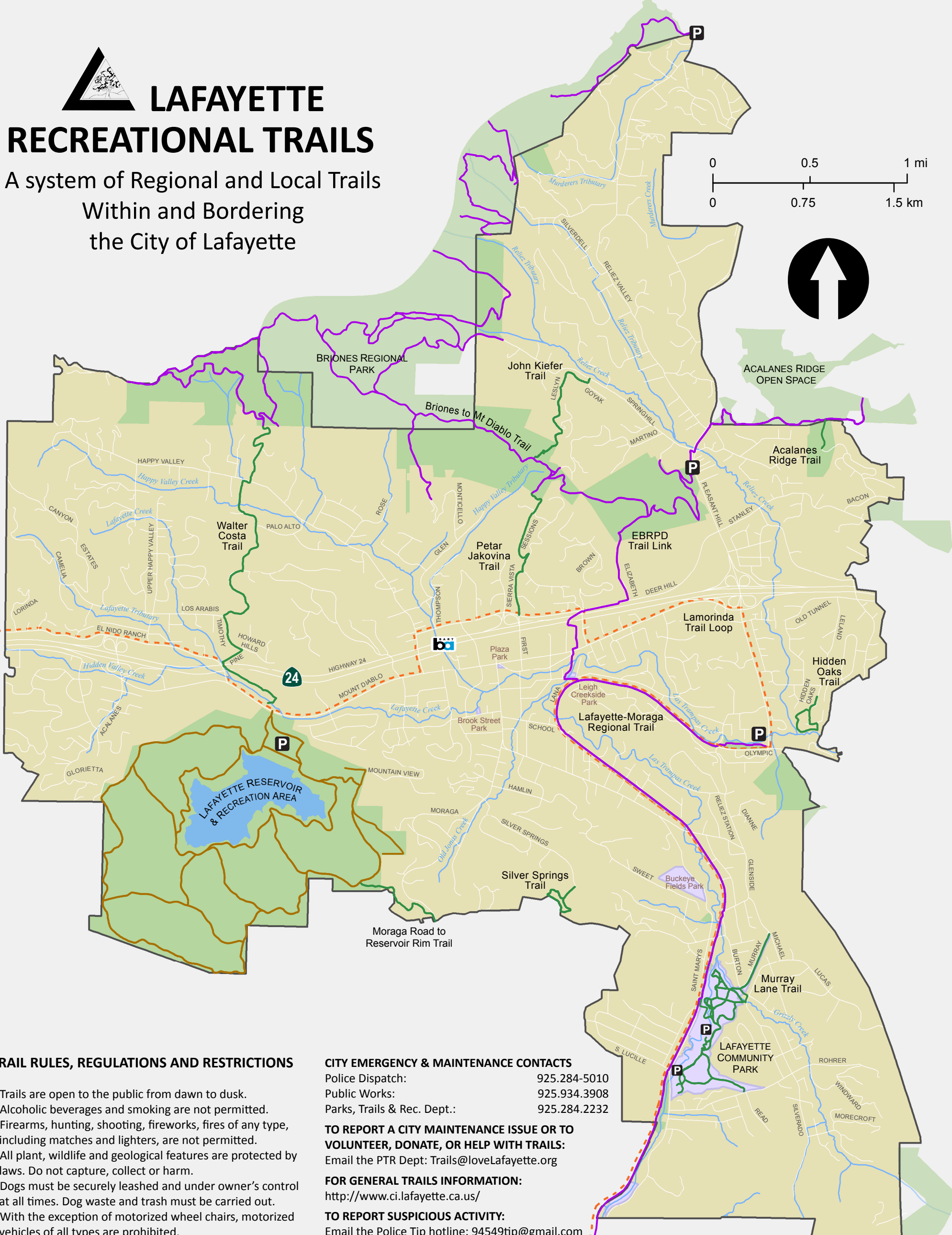
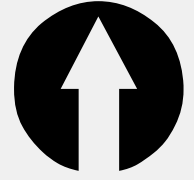
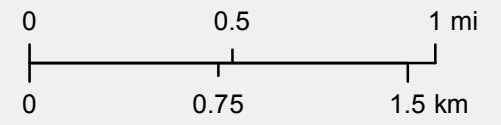




# LAFAYETTE RECREATIONAL TRAILS

A system of Regional and Local Trails  
Within and Bordering  
the City of Lafayette



## TRAIL RULES, REGULATIONS AND RESTRICTIONS

- Trails are open to the public from dawn to dusk.
- Alcoholic beverages and smoking are not permitted.
- Firearms, hunting, shooting, fireworks, fires of any type, including matches and lighters, are not permitted.
- All plant, wildlife and geological features are protected by laws. Do not capture, collect or harm.
- Dogs must be securely leashed and under owner's control at all times. Dog waste and trash must be carried out.
- With the exception of motorized wheel chairs, motorized vehicles of all types are prohibited.
- Respect private property and be considerate of neighbors and fellow trail users by keeping noise down.
- Cutting, breaking, defacing or disturbing a sign, fence, bench, or other city property located on trails is prohibited.
- Placing a rope, wire, mark, writing, or sign on a tree, plant or city structure located on, or next to, a trail is not allowed.
- Bicycles are not permitted on trails that have been posted as unsafe for bicycle use.
- Bicycles shall be operated in a safe manner especially when sharing trails with pedestrians. Bicycle speed, on mixed-use trails shall not exceed 15 mph on straightaways and 5 mph around corners and hills. Call out when pedestrians are ahead.

Lafayette Municipal Code Chapter 8-22, contains a complete listing of the rules, regulations and restrictions applicable to all Lafayette trails. Violations will be subject to citations and fines.

## CITY EMERGENCY & MAINTENANCE CONTACTS

Police Dispatch: 925.284-5010  
Public Works: 925.934.3908  
Parks, Trails & Rec. Dept.: 925.284.2232

## TO REPORT A CITY MAINTENANCE ISSUE OR TO VOLUNTEER, DONATE, OR HELP WITH TRAILS:

Email the PTR Dept: [Trails@loveLafayette.org](mailto:Trails@loveLafayette.org)

## FOR GENERAL TRAILS INFORMATION:

<http://www.ci.lafayette.ca.us/>

## TO REPORT SUSPICIOUS ACTIVITY:

Email the Police Tip hotline: [94549tip@gmail.com](mailto:94549tip@gmail.com)

## EBRPD/EBMUD EMERGENCY & MAINTENANCE:

See reverse for emergency and non-emergency contact information

Highway 24

Parking

BART Station



## Lafayette Trail Types

- City Trail
- EBMUD Trail
- EBRPD Trail
- Lamorinda Loop Trail
- Lafayette Parks
- Public Open Space