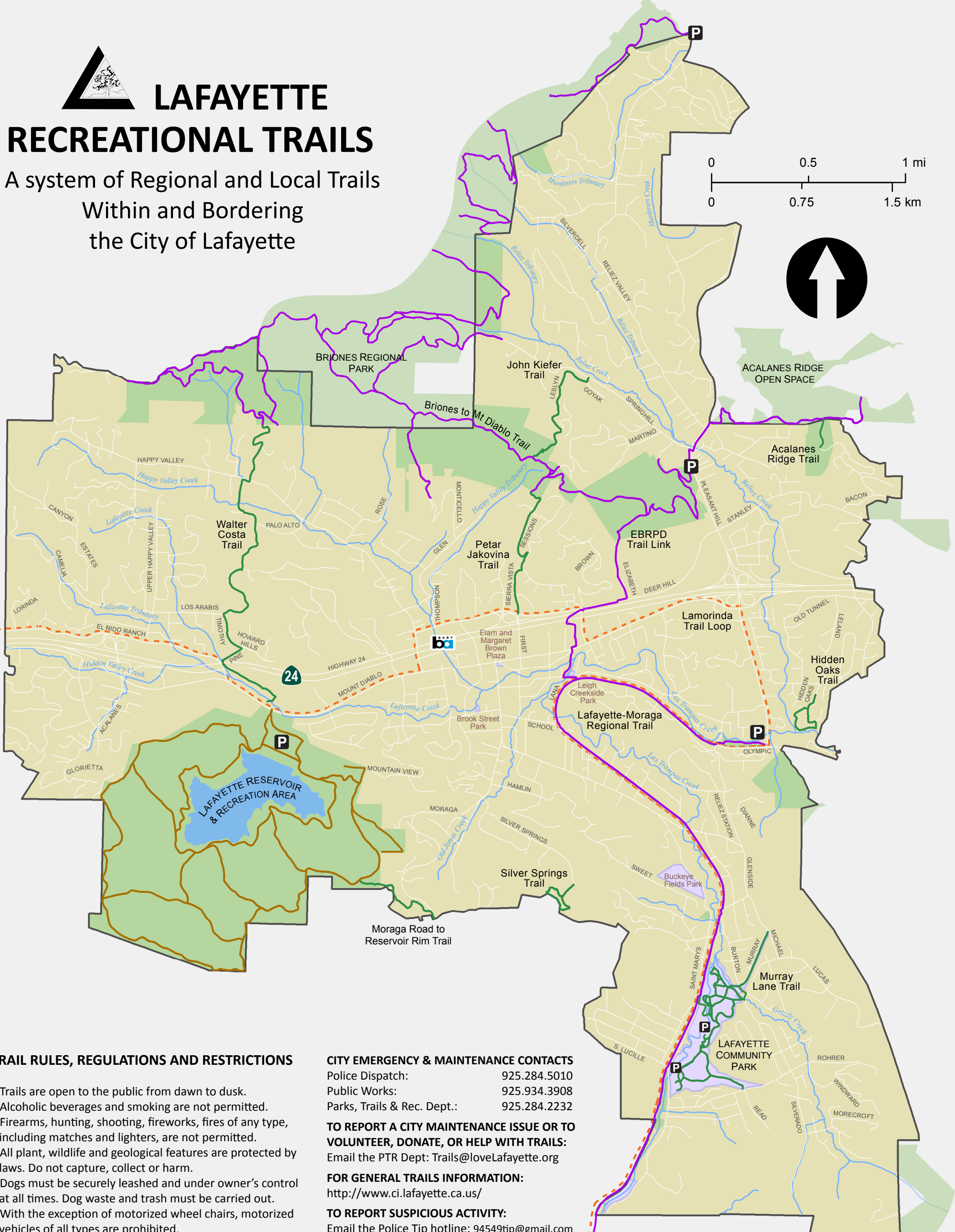
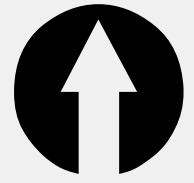
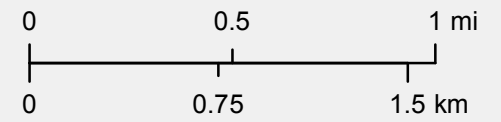




# LAFAYETTE RECREATIONAL TRAILS

A system of Regional and Local Trails  
Within and Bordering  
the City of Lafayette



## TRAIL RULES, REGULATIONS AND RESTRICTIONS

- Trails are open to the public from dawn to dusk.
- Alcoholic beverages and smoking are not permitted.
- Firearms, hunting, shooting, fireworks, fires of any type, including matches and lighters, are not permitted.
- All plant, wildlife and geological features are protected by laws. Do not capture, collect or harm.
- Dogs must be securely leashed and under owner's control at all times. Dog waste and trash must be carried out.
- With the exception of motorized wheel chairs, motorized vehicles of all types are prohibited.
- Respect private property and be considerate of neighbors and fellow trail users by keeping noise down.
- Cutting, breaking, defacing or disturbing a sign, fence, bench, or other city property located on trails is prohibited.
- Placing a rope, wire, mark, writing, or sign on a tree, plant or city structure located on, or next to, a trail is not allowed.
- Bicycles are not permitted on trails that have been posted as unsafe for bicycle use.
- Bicycles shall be operated in a safe manner especially when sharing trails with pedestrians. Bicycle speed, on mixed-use trails shall not exceed 15 mph on straightaways and 5 mph around corners and hills. Call out when pedestrians are ahead.

Lafayette Municipal Code Chapter 8-22, contains a complete listing of the rules, regulations and restrictions applicable to all Lafayette trails. Violations will be subject to citations and fines.

## CITY EMERGENCY & MAINTENANCE CONTACTS

Police Dispatch: 925.284.5010  
Public Works: 925.934.3908  
Parks, Trails & Rec. Dept.: 925.284.2232

**TO REPORT A CITY MAINTENANCE ISSUE OR TO VOLUNTEER, DONATE, OR HELP WITH TRAILS:**  
Email the PTR Dept: [Trails@loveLafayette.org](mailto:Trails@loveLafayette.org)

**FOR GENERAL TRAILS INFORMATION:**  
<http://www.ci.lafayette.ca.us/>

**TO REPORT SUSPICIOUS ACTIVITY:**  
Email the Police Tip hotline: [94549tip@gmail.com](mailto:94549tip@gmail.com)  
**EBRPD/EBMUD EMERGENCY & MAINTENANCE:**  
See reverse for emergency and non-emergency contact information

- Highway 24
- Parking
- BART Station



## Lafayette Trail Types

- City Trail
- EBMUD Trail
- EBRPD Trail
- Lamorinda Loop Trail
- Lafayette Parks
- Public Open Space

## CITY OF LAFAYETTE TRAILS

City trails are mainly neighborhood trails providing a loop within a neighborhood or connections to regional trails and other recreational facilities. Maps and detailed descriptions of the specific trails, including the trail system within the Lafayette Community Park, are available at the Lafayette Parks, Trails & Recreation Office at 500 Saint Mary's Road or at [www.ci.lafayette.ca.us](http://www.ci.lafayette.ca.us)

### WALTER COSTA TRAIL

The Walter Costa Trail takes you from the Lafayette Reservoir over Quail Ridge, to Happy Valley School. From there you can cross Happy Valley Road and continue on Panorama Drive into Briones Regional Park. The Trail is a mix of suburban streets and more rural trails with magnificent views from high on the ridge.

*One Way Length:* 2.17 miles  
*Surface:* Mostly paved with some dirt trail  
*Terrain:* Hilly as you climb over the ridge  
*Parking:* On El Nido Ranch Road, Pine Lane and Happy Valley Road where permitted

### JOHN KIEFER TRAIL

The John Kiefer Trail is a "feeder" trail providing access from the Springhill Valley to Lafayette Ridge and Briones Regional Park. The trail entrance is at the intersection of Goyak Drive and Leslyn Lane. The trail proceeds up Leslyn Lane for 0.5 miles, where the trail leaves the road and winds up to Lafayette Ridge.

*One Way Length:* 0.75 miles  
*Surface:* Paved street and dirt trail  
*Terrain:* Steep climb with stairs  
*Parking:* On public roads where permitted. NO PARKING on Leslyn Lane

### HIDDEN OAKS TRAIL

This loop trail is in the Hidden Oaks neighborhood off Condit Road. Proceed down Hidden Oaks Drive, turn right along Samantha Drive and then follow the city trail markers between the houses to the end of the road. The trail follows the creek until it emerges on Sanford Lane. Turn left on Sanford Lane to rejoin Hidden Oaks Drive.

*Loop Length:* About 1 mile  
*Surface:* Decomposed granite and paved streets  
*Terrain:* Flat - slight slope on Hidden Oaks Drive  
*Parking:* NO PARKING within Hidden Oaks. Park outside the development on public streets where permitted

### MURRAY LANE TRAIL

This all-weather trail provides bicycle and pedestrian access from the Michael and Murray Lane areas to the north end of the Lafayette Community Park and continues through to the Lafayette Community Center and Lafayette-Moraga Regional Trail.

*One Way Length:* 0.3 miles  
*Surface:* Decomposed granite  
*Terrain:* Flat

### PETAR JAKOVINA TRAIL

The Petar Jakovina Trail is a "feeder" trail providing access from downtown Lafayette to Lafayette Ridge and Briones Regional Park. From Deerhill Road, walk up Sierra Vista and turn left on Sessions Road. Continue uphill for about 0.25 miles to the trail sign on your left. The trail is mostly uphill and includes many steps.

*One Way Length:* 0.25 miles on Sessions Road, 0.75 miles of trail  
*Surface:* Dirt trail  
*Terrain:* Steep uphill with many stairs  
*Parking:* On Sierra Vista where permitted. NO PARKING on Sessions Road

### SILVER SPRINGS TRAIL

The entrance to this neighborhood trail is at the end of Silver Springs Court, and it is clearly marked with a trail sign. The trail follows the paved driveway on the marked right-of-way, meets a graveled path, and climbs the stepped slope to join the loop.

*Entrance & Loop Length:* 0.78 miles  
*Surface:* Dirt  
*Terrain:* Moderate with ups and downs  
*Parking:* At the end of Silver Springs Court

### MORAGA ROAD TO RESERVOIR RIM TRAIL

The Moraga Road to the Reservoir Rim Trail allows you access to the Reservoir Rim Trail. The entrance from Moraga is just north of the intersection of Moraga Road and Via Granada. The dirt trail follows the hillside contours beneath oaks and bay laurels with gentle ups and downs. The last section of the trail climbs a steep hill, before you go through a gateway to EBMUD watershed land and from there to the Rim Trail.

*One Way Length:* 0.62 miles  
*Surface:* Dirt Trail  
*Terrain:* Undulating with final steep hill  
*Parking:* On Via Granada

### LAFAYETTE COMMUNITY PARK

The park contains nearly 3 miles of trails ranging from all-weather surfaces to narrow, dirt, nature trails. Parking and restrooms are available at the Lafayette Community Center, 500 Saint Mary's Rd., and at the southern end of the Park. Access is also available from the Lafayette-Moraga Regional Trail and from Silverado Drive and Rohrer Drive.

---

## EAST BAY MUNICIPAL UTILITY DISTRICT

● 925.284.9669 ●

WWW.EBMUD.COM/RECREATION

### LAFAYETTE RESERVOIR AND RECREATION AREA

The Lafayette Reservoir and Recreation Area is owned and operated by EBMUD. The Recreation Area is an all-year day-use area ideal for hiking, jogging, fishing, boating and picnicking. The area features the "Shore" and "Rim" trails but also includes many connecting trails. For more information go to [www.ebmud.com](http://www.ebmud.com)

**The Shore Trail** is a hilly, 2.8-mile paved trail that completely encircles the Reservoir.

**The Rim Trail** is a more challenging 4.3-mile dirt trail that traverses the ridge tops surrounding the Reservoir.

---

## EAST BAY REGIONAL PARK DISTRICT

● 1 (888) 327.2757 ●

WWW.EBPARKS.ORG

### BRIONES REGIONAL PARK

The Park's 6,117 acres offers miles of scenic trails on its rolling, grassy hills and secluded, shady canyons. Three City trails offer neighborhood connections to the regional park.

### BRIONES TO MOUNT DIABLO REGIONAL TRAIL

Connecting Briones Regional Park and Mount Diablo State Park and other major regional trails, this trail serves the communities of Lafayette and Walnut Creek.

### LAFAYETTE-MORAGA REGIONAL TRAIL

This 7.65-mile linear park parallels St. Mary's Road through Lafayette and Moraga along a historic railroad route. It accommodates hiking, bicycling, and equestrian use. The north end of the trail begins at a staging area at Olympic Blvd and Pleasant Hill Rd in Lafayette and ends at EBMUD's Valle Vista staging area at the outskirts of Moraga.

### EBRPD TRAIL LINK

The 1.43-mile trail connects the Lafayette-Moraga Regional Trail with the Briones to Mount Diablo Regional Trail through downtown Lafayette.

For more information and downloadable maps go to [www.ebparks.org](http://www.ebparks.org)

---

### LAMORINDA TRAIL LOOP

This continuous, tri-city trail was developed in partnership with the cities of Lafayette, Orinda and Moraga and the East Bay Regional Park District. Maps are available from each city, on the City of Lafayette website at [www.ci.lafayette.ca.us](http://www.ci.lafayette.ca.us), and are on display outside the Orinda and Lafayette BART stations, Lafayette Community Center and Moraga Commons.

### ACALANES RIDGE OPEN SPACE

This 23-acre open space, acquired in 2011, is adjacent to Walnut Creek Open Space and is accessible via the Briones to Mt. Diablo Regional Trail. Acquisition was made possible through a partnership between the Muir Heritage Land Trust, the cities of Lafayette and Walnut Creek, and the East Bay Regional Parks District. Parking is available at the EBRPD trailhead on Pleasant Hill Road. Walk north on Pleasant Hill Road to the Briones to Mount Diablo Regional Trail which provides access to the varied trails in the Open Space.