

The Terraces of Lafayette Circulation Commission

November 4, 2013

The Project is the

315-Unit (May 6, 2011) Project Application

With potential modifications including:
(in the form of City Conditions of Approval)

Potential City Conditions of Approval

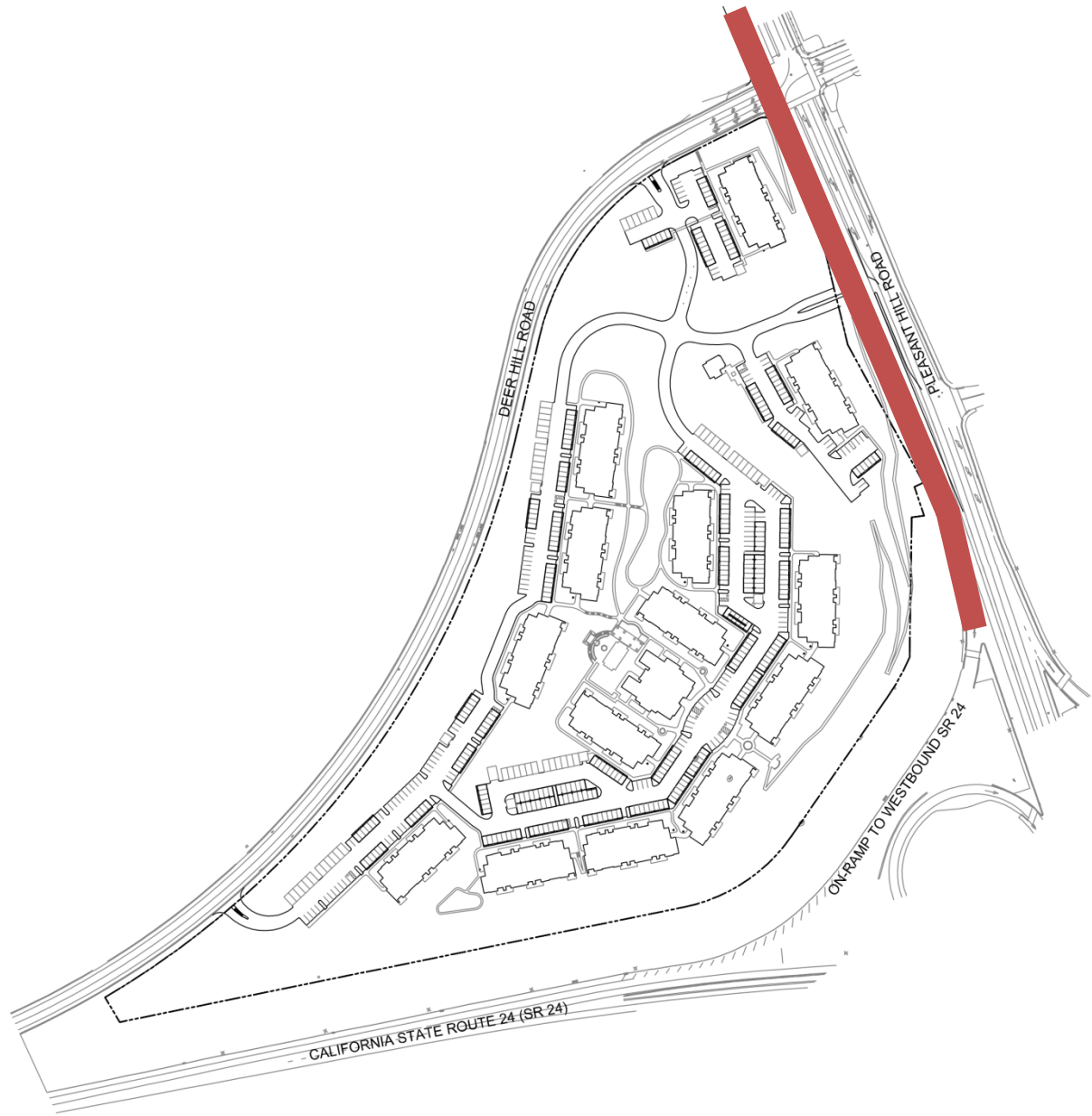
- Additional southbound lane on PHR, from north of DHR to the freeway onramp (included in project application)
- Dedicated right turn lane from southbound PHR to westbound DHR
- Class I Bike/Pedestrian path from Briones Park boundary to DHR, at west edge of subject property. (bypass of DHR summit)
- Class I Bike/Pedestrian path (on west side of PHR) from DHR to freeway onramp.
- Student drop-off and pick-up area near PHR and DHR
- Bus turn-out on southbound PHR, south of DHR
- Bus turn-out on south side of DHR, at summit
- Relocate primary project access to west DHR driveway
- Eliminate main project entry on PHR

Additional improvements the Project may contribute to

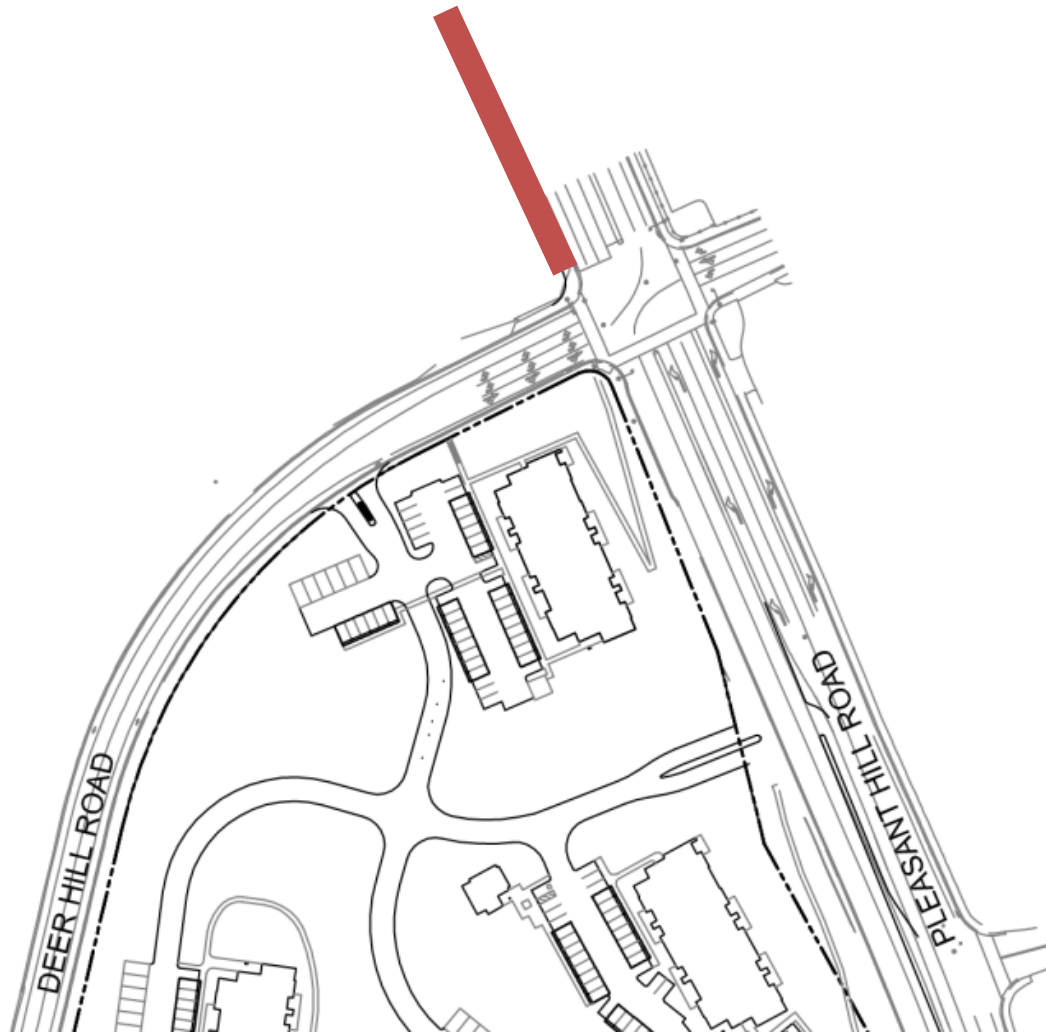
(subject to further engineering design
and/or acquisition of necessary right of way)

- A) Extension of Class I Bike/Pedestrian Path from west project boundary to Brown Ave.
- B) Extension of Class I Bike/Pedestrian Path from Briones Park boundary to Springhill Rd.
- C) Round-a-bout at west project entry
- D) Round-a-bout at Brown Ave.
- E) Replacement of lost PHR parking

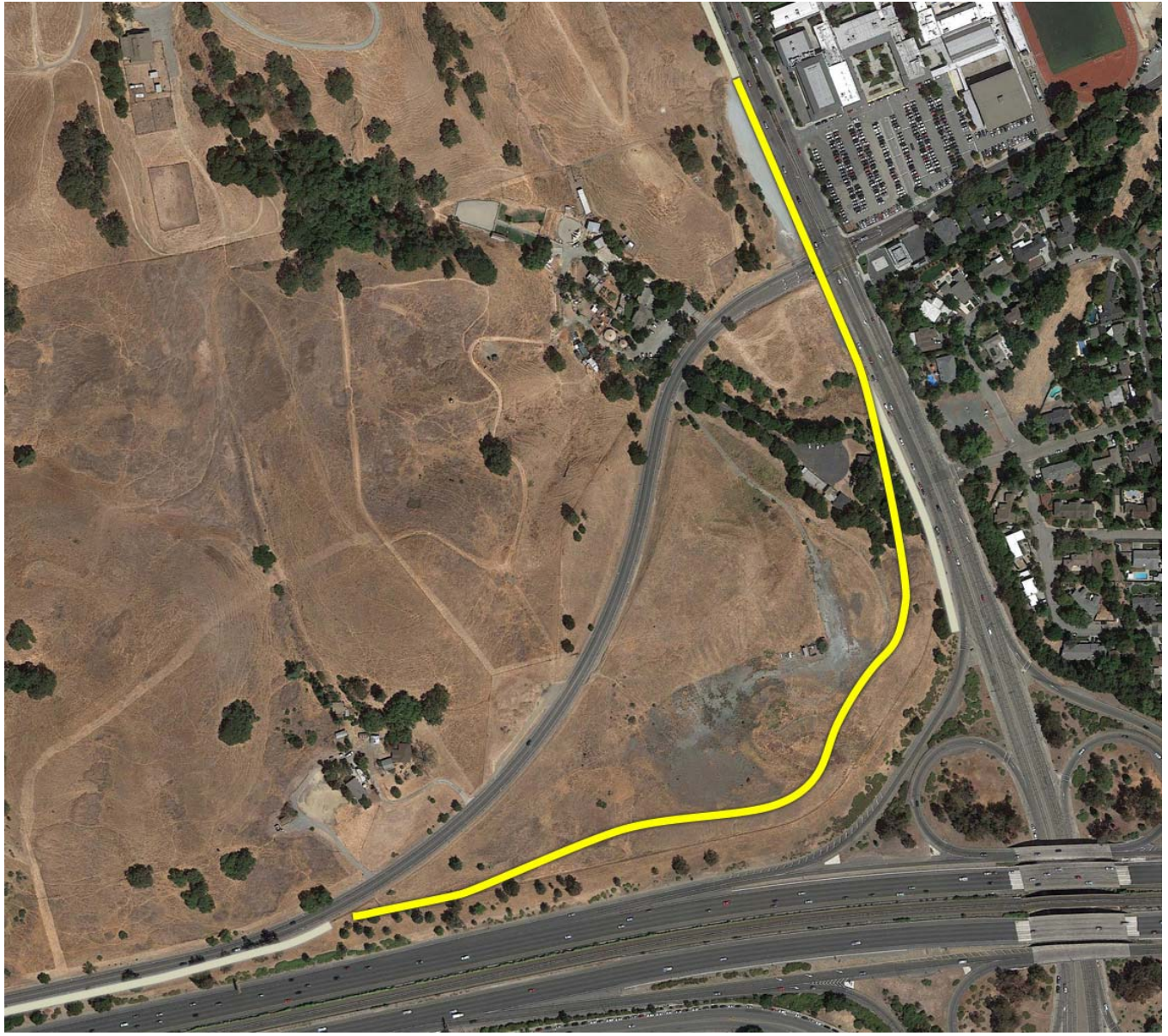
1



2



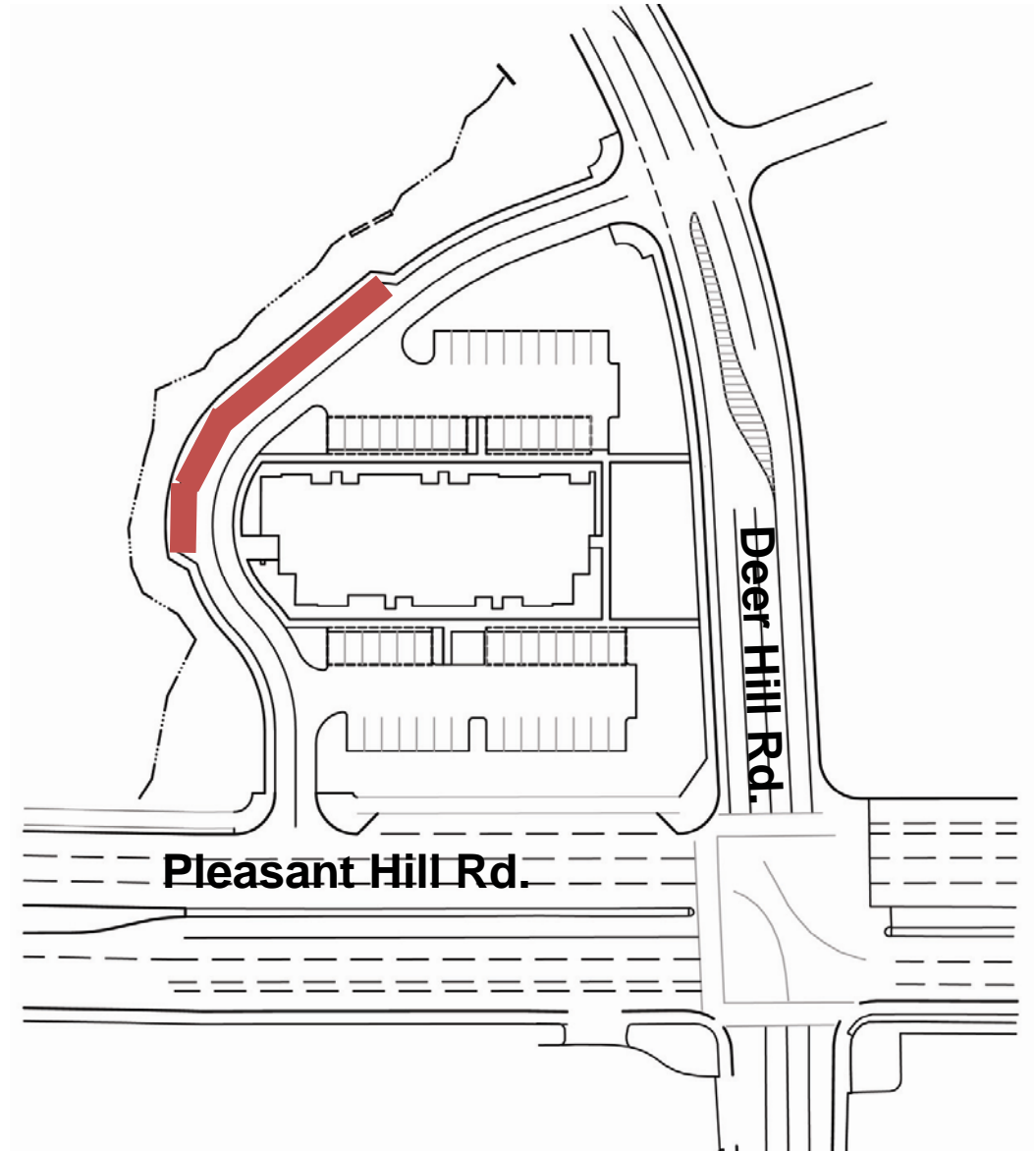
3



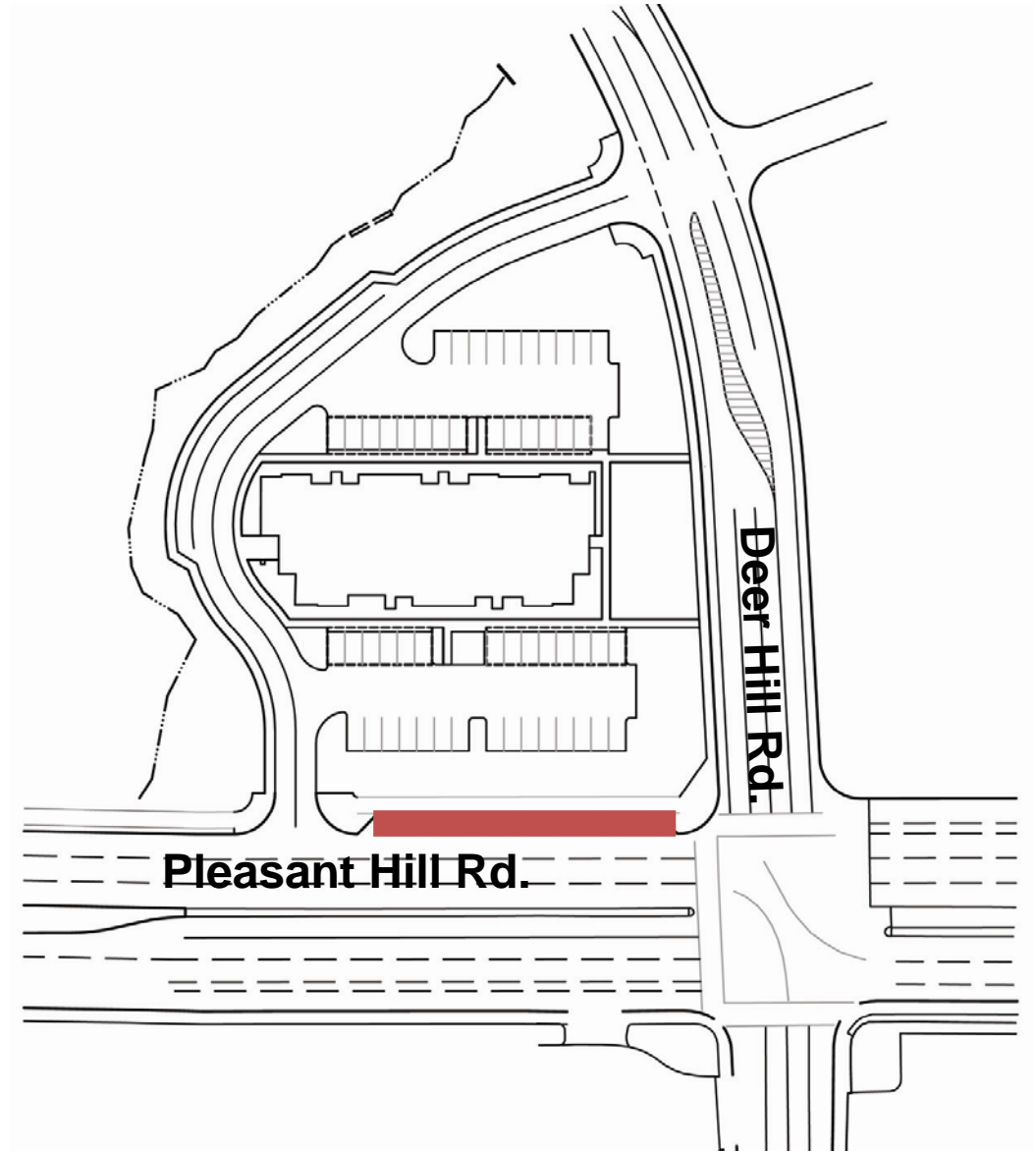
4



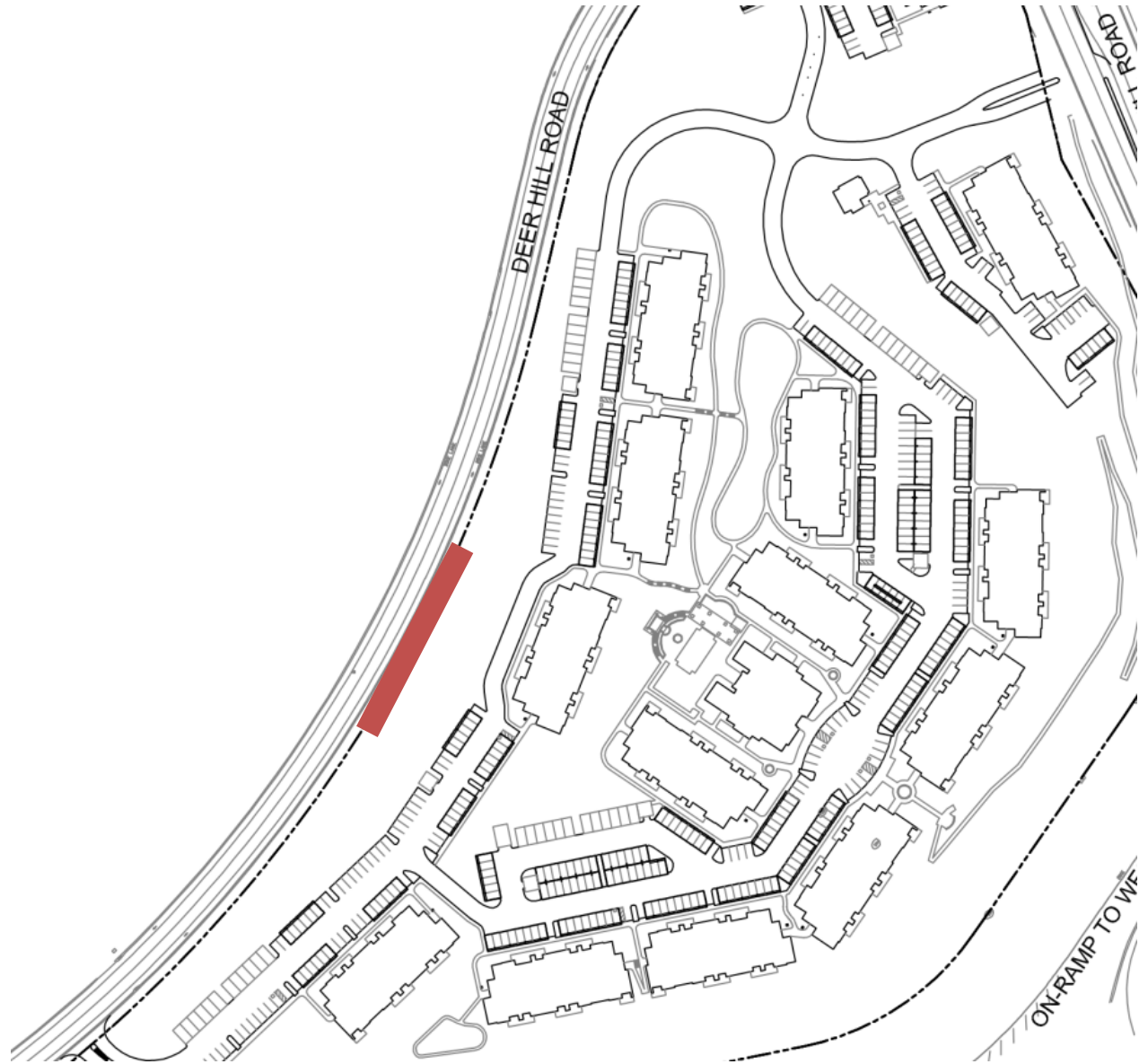
5



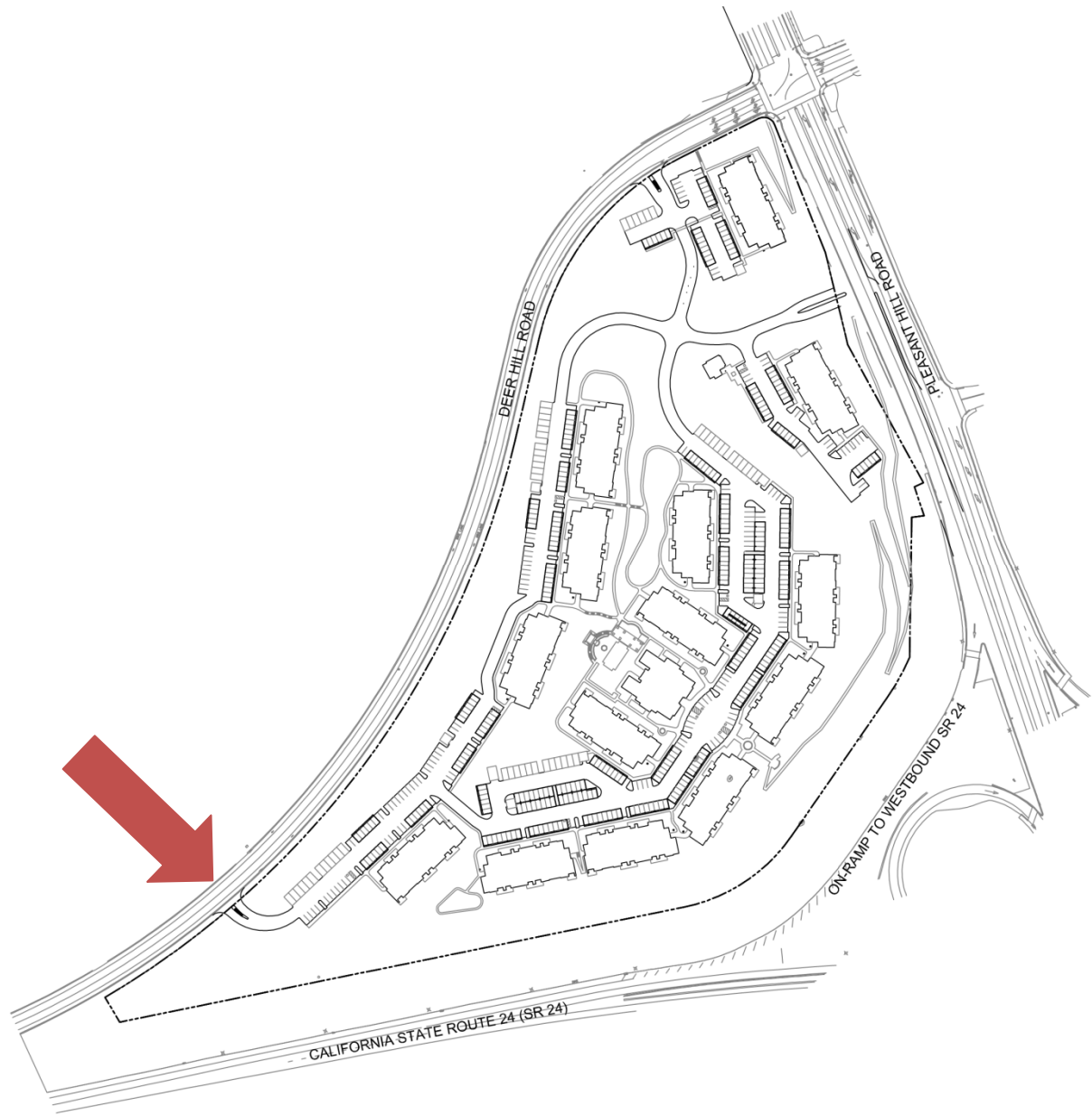
6



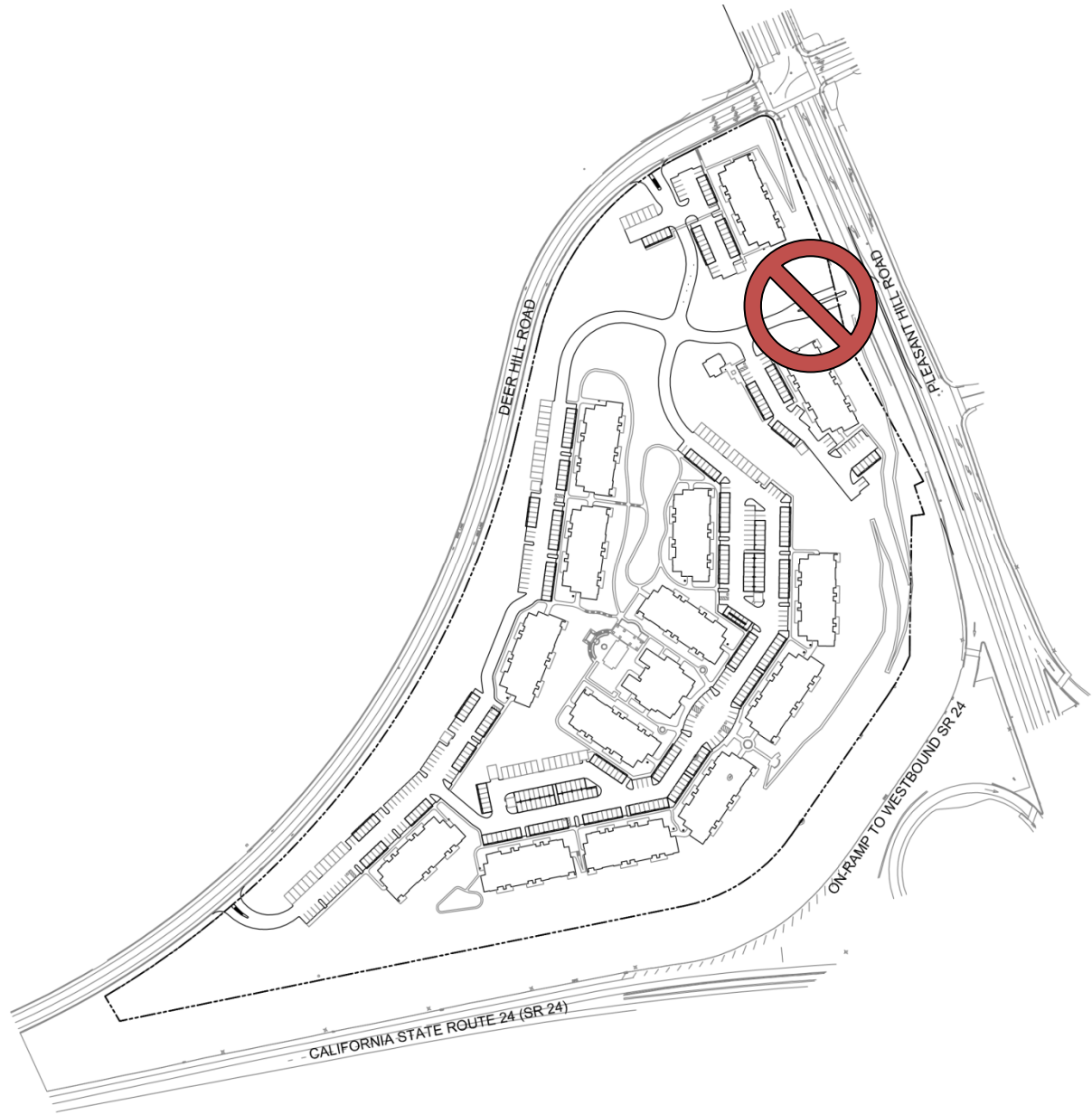
7



8



9





B

