

SEE SHEET 2
MATCH LINE

SEE SHEET 2
MATCH LINE

$\Delta = 46^{\circ}13'52''$
 $R = 1530.00'$
 $L = 1234.54'$

$\Delta = 43^{\circ}51'34''$
 $R = 300.00'$
 $L = 229.64'$

LEGEND:

---	SUBJECT PROPERTY LINE
- - - -	EASEMENT LINE
---	CENTER LINE
---	ELECTRIC LINE
---	GAS LINE
---	OVERHEAD ELECTRIC LINE(S)
---	SANITARY SEWER LINE
---	WATER LINE
---	FENCE LINE
---	LACK OF ABUTTER'S RIGHTS
AC	ASPHALT CONCRETE
BS	BOTTOM OF SLOPE
CB	CATCH BASIN
CM	CORRUGATED METAL PIPE
DYL	DAYLIGHT SHOT
EBMUD	EAST BAY MUNICIPAL UTILITY DISTRICT
EP	EDGE OF PAVEMENT
FL	FLOWLINE
HW	CONCRETE HEADWALL
O. R.	OFFICIAL RECORDS
PP	POWER POLE
(R)	RADIAL BEARING
RCP	REINFORCED CONCRETE PIPE
R/W	RIGHT OF WAY
T	TREE WITH IDENTIFYING NUMBER (SEE NOTE 10)
TS	TOP OF SLOPE

NOTES:

- RECORD INFORMATION SHOWN HEREON IS BASED ON INFORMATION CONTAINED IN THE PRELIMINARY TITLE REPORT PREPARED BY FIRST AMERICAN TITLE, DATED JANUARY 6, 2011, ORDER NUMBER NCS-471802-CC.
- THE EFFECTS OF AN EAST BAY MUNICIPAL DISTRICT WATER PIPE LINE EASEMENT RECORDED NOVEMBER 25, 1927, IN BOOK 237 AT PAGE 237 OF OFFICIAL RECORDS, THE EXACT LOCATION OF WHICH IS NOT DEFINED OF RECORD.
- THE EFFECTS OF AN EAST BAY MUNICIPAL DISTRICT WATER PIPE LINE EASEMENT RECORDED JUNE 17, 1926, IN BOOK 45 AT PAGE 119 OF OFFICIAL RECORDS, THE EXACT LOCATION OF WHICH IS AMBIGUOUS AND CANNOT BE DETERMINED FROM RECORD INFORMATION.
- TOPOGRAPHY SHOWN HEREON WAS COMPILED USING PHOTOGRAMMETRIC TECHNIQUES FROM AERIAL PHOTOGRAPHY DATED FEBRUARY 28, 2011, AND A FIELD SURVEY PERFORMED MARCH 17, 2011.
- ALL DISTANCES AND DIMENSIONS ARE IN FEET AND DECIMALS THEREOF.
- CONTOUR INTERVAL: 2 FOOT.
- ASSESSOR'S PARCEL NUMBER: 232-150-027.
- AREA: 22.274 ACRES, MORE OR LESS.
- THE UTILITY LINES SHOWN ON THIS PLAN ARE DERIVED FROM RECORD DATA. ACTUAL LOCATION AND SIZE, TOGETHER WITH THE PRESENCE OF ANY ADDITIONAL UTILITY LINES NOT SHOWN ON THIS PLAN, SHALL BE VERIFIED IN THE FIELD BY THE CONTRACTOR DURING CONSTRUCTION.
- FOR TREE TYPE AND DIAMETER SIZE REFER TO THE REPORT DATED MAY 15, 2011, PREPARED BY TRAVERSO TREE SERVICE.

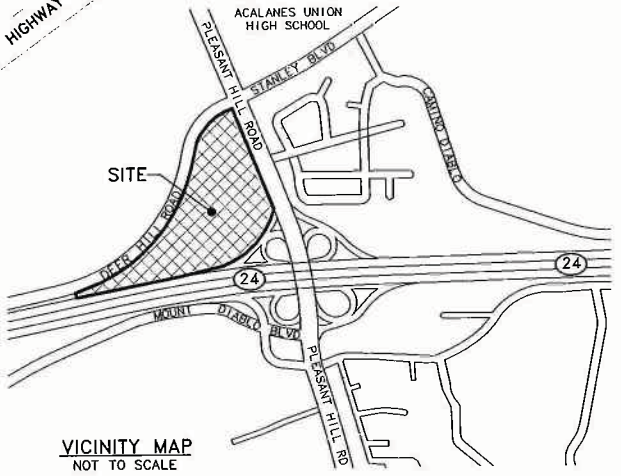
BASIS OF BEARINGS:

THE BEARINGS USED ON THE SURVEY SHOWN HEREON ARE BASED ON THE CONTRA COSTA COUNTY CONTROL PROJECT GPS1659, NAD83, CALIFORNIA COORDINATE SYSTEM, ZONE 3.

DISTANCES SHOWN ARE GRID. MULTIPLY DISTANCES SHOWN BY 1.0000880 TO OBTAIN GROUND LEVEL DISTANCES.

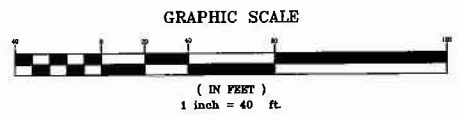
BENCHMARK:

CONTROL POINT AA3807, 3-INCH DISK SET IN CONCRETE STAMPED CONTRA COSTA CO GPS CONTROL POINT #10, LS 5672, CONTRA COSTA CONTROL PROJECT GPS1959, TAKEN AS 382.8 FEET, EPOCH 2007.00, NAVD88 DATUM, GPS RTK DERIVED.



PROPERTY DESCRIPTION:

- BEING THE LANDS DESCRIBED IN THE DIRECTOR'S DEED RECORDED SEPTEMBER 19, 1971, IN BOOK 7326, PAGE 626, CONTRA COSTA COUNTY RECORDS.
- BEING ALSO THE LANDS DESCRIBED IN THE INDIVIDUAL GRANT DEEDS RECORDED DECEMBER 31, 1987, AS DOCUMENT NUMBERS 87-273198, 87-273199, AND 87-273200, CONTRA COSTA COUNTY RECORDS.
- BEING ALSO THE LANDS DESCRIBED IN THE QUITCLAIM DEEDS RECORDED APRIL 12, 2006, AS DOCUMENT NUMBERS 2006-114044, AND 2006-114045, CONTRA COSTA COUNTY RECORDS.

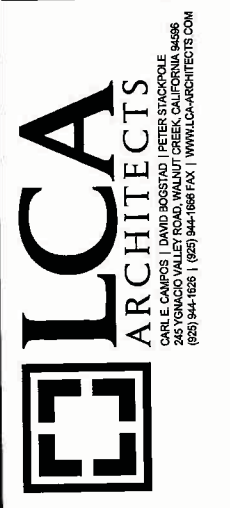


SURVEYOR'S STATEMENT:

THIS SURVEY PREPARED UNDER MY DIRECT SUPERVISION.
FOR BKF ENGINEERS.

BARRY T. WILLIAMS, P.L.S. NO. 6711
LICENSE EXPIRES: 06/30/12

DATE: _____



THE TERRACES OF LAFAYETTE
DEER HILL ROAD, LAFAYETTE, CALIFORNIA

Loving & Campos Architects Inc.
RESTRICTED ARCHITECTURAL DRAWINGS

The information, plans, designs, notes and arrangements shown on this drawing are confidential and may not be reproduced in whole or in part without the expressed written permission of LOVING & CAMPOS ARCHITECTS, INC. Drawings noted as Preliminary, Schematic and / or Concept contain information that is conceptual and subject to verification and/or change. The architect makes no claim for accuracy of conceptual information or of information supplied by others.



SCALE: AS SHOWN
DATE: 3/21/2011

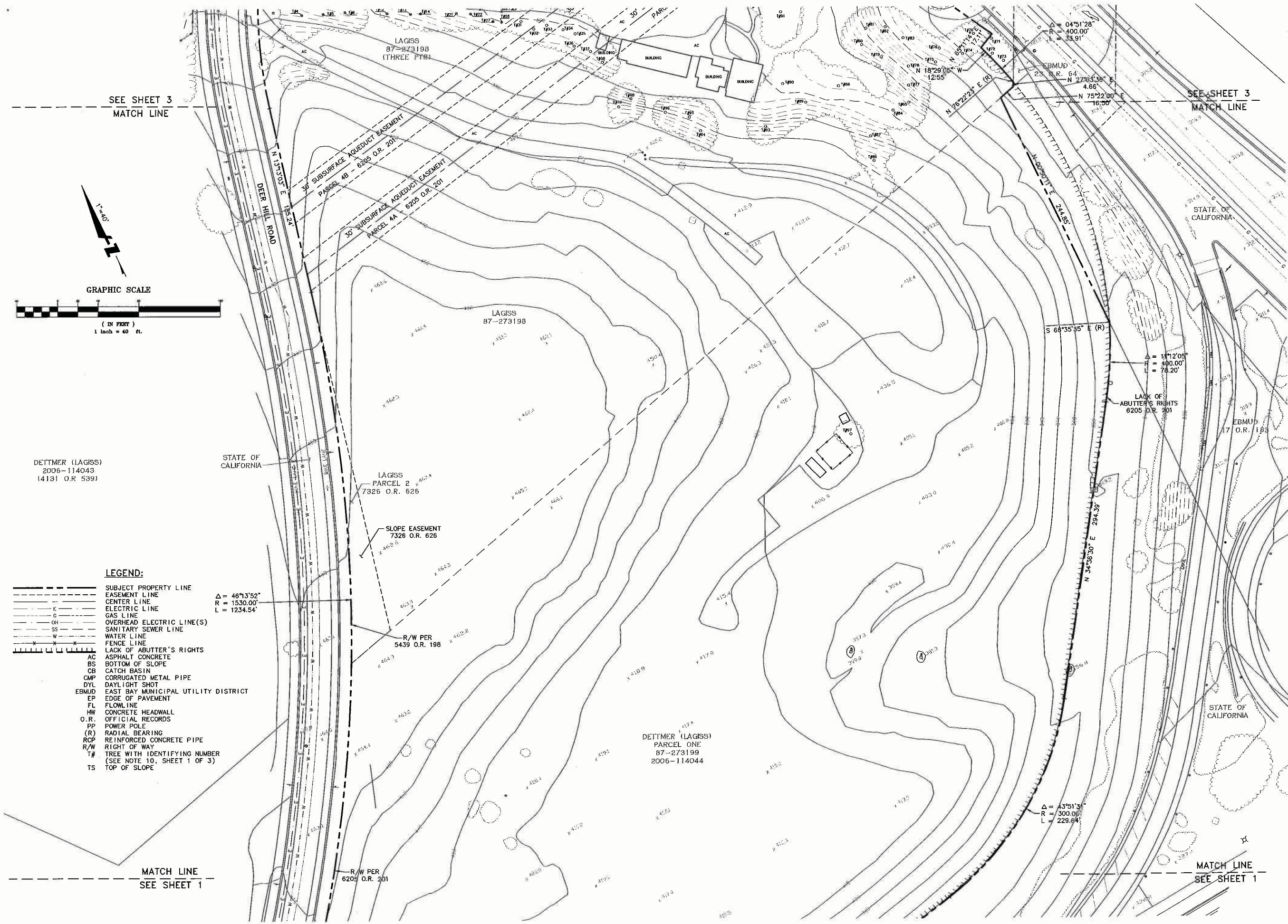
REVISIONS:

SITE SURVEY

PROJECT NO. 20115003

SV-1

SHEET 1 OF 3

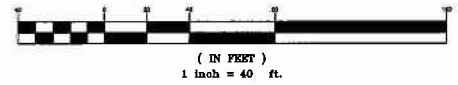


SEE SHEET 3
MATCH LINE

SEE SHEET 3
MATCH LINE



GRAPHIC SCALE



DETTMER (LAGISS)
2006-114043
(4131 O.R. 539)

STATE OF CALIFORNIA

LAGISS
PARCEL 2
7325 O.R. 626

SLOPE EASEMENT
7326 O.R. 626

R/W PER
5439 O.R. 198

DETTMER (LAGISS)
PARCEL ONE
87-273199
2006-114044

LACK OF
ABUTTER'S RIGHTS
6205 O.R. 201

EBMUD
17 O.R. 186

STATE OF CALIFORNIA

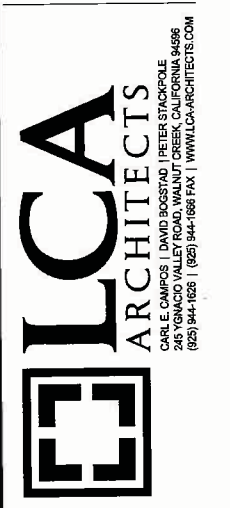
LEGEND:

- SUBJECT PROPERTY LINE
- - - EASEMENT LINE
- CENTER LINE
- - - E ELECTRIC LINE
- - - G GAS LINE
- - - OH OVERHEAD ELECTRIC LINE(S)
- - - SS SANITARY SEWER LINE
- - - W WATER LINE
- - - FENCE LINE
- - - LACK OF ABUTTER'S RIGHTS
- AC ASPHALT CONCRETE
- BS BOTTOM OF SLOPE
- CB CATCH BASIN
- CMP CORRUGATED METAL PIPE
- DYL DAYLIGHT SHOT
- EBMUD EAST BAY MUNICIPAL UTILITY DISTRICT
- EP EDGE OF PAVEMENT
- FL FLOW LINE
- HW CONCRETE HEADWALL
- O.R. OFFICIAL RECORDS
- PP POWER POLE
- (R) RADIAL BEARING
- RCP REINFORCED CONCRETE PIPE
- R/W RIGHT OF WAY
- T# TREE WITH IDENTIFYING NUMBER (SEE NOTE 10, SHEET 1 OF 3)
- TS TOP OF SLOPE

MATCH LINE
SEE SHEET 1

R/W PER
6205 O.R. 201

MATCH LINE
SEE SHEET 1



THE TERRACES OF LAFAYETTE
DEER HILL ROAD, LAFAYETTE, CALIFORNIA

Loving & Campos Architects Inc.
RESTRICTED ARCHITECTURAL DRAWINGS

The information, plans, designs, notes and arrangements shown on this drawing are confidential and may not be reproduced in whole or in part without the expressed written permission of LOVING & CAMPOS ARCHITECTS, INC. Drawings noted as Preliminary, Schematic and / or Concept contain information that is conceptual and subject to verification and/or change. The architect makes no claim for accuracy of conceptual information or of information supplied by others.



1648 N. CALIFORNIA BLVD., STE. 200
MILPITAS, CALIF. 95035
Ph: (408) 940-2200
Fax: (408) 940-2299

SCALE: AS SHOWN
DATE: 3/21/2011

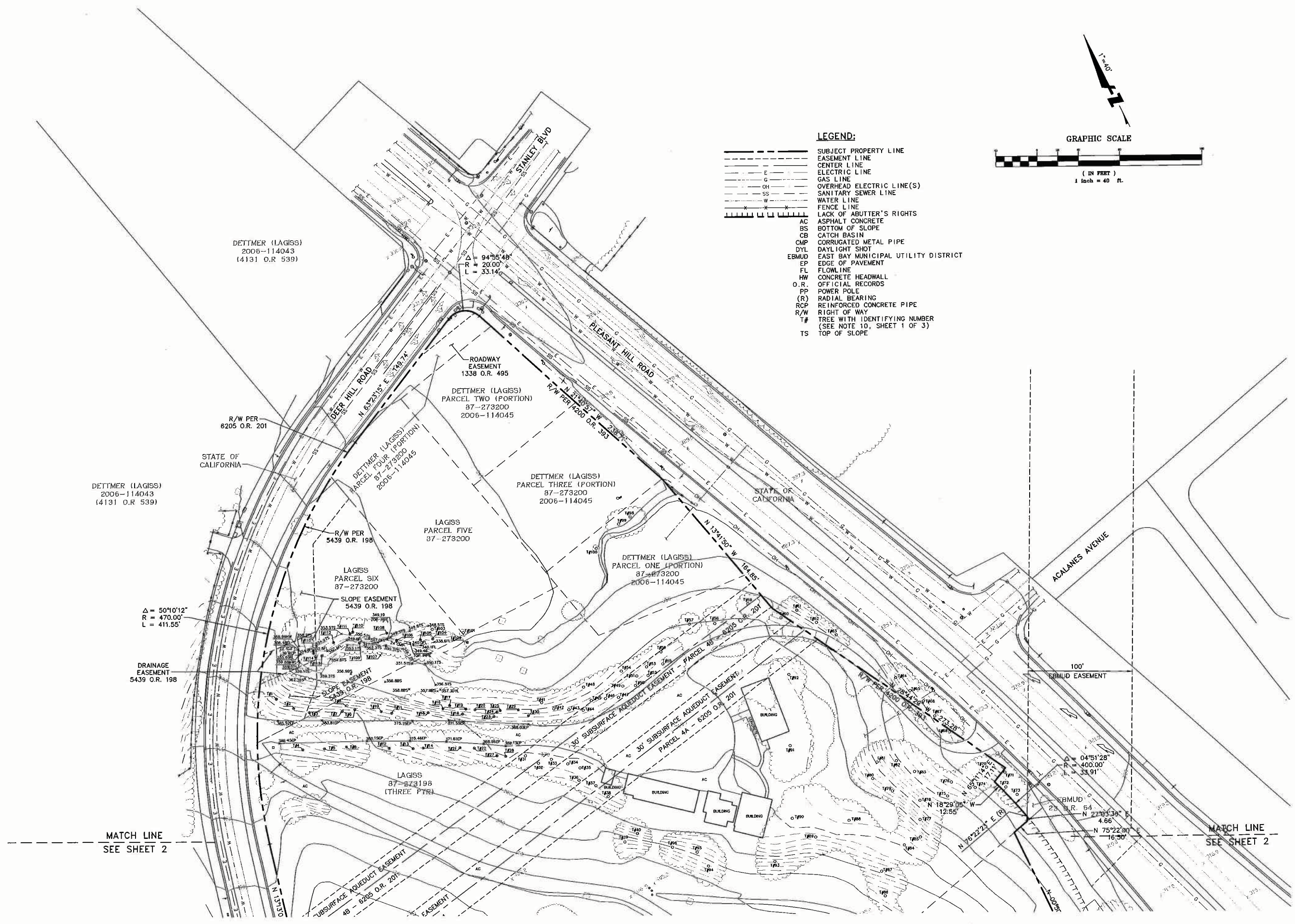
REVISIONS:

SITE SURVEY

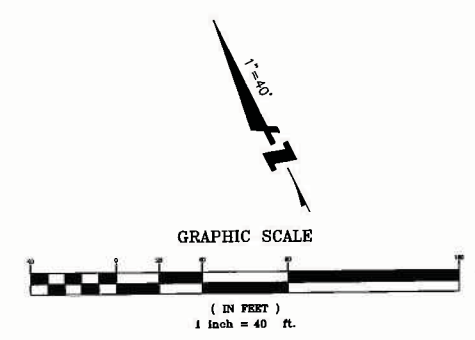
PROJECT NO. 20115003

SV-2

SHEET 2 OF 3



- LEGEND:**
- SUBJECT PROPERTY LINE
 - - - EASEMENT LINE
 - CENTER LINE
 - - - E ELECTRIC LINE
 - - - G GAS LINE
 - - - OH OVERHEAD ELECTRIC LINE(S)
 - - - SS SANITARY SEWER LINE
 - - - W WATER LINE
 - - - F FENCE LINE
 - ||||| LACK OF ABUTTER'S RIGHTS
 - AC ASPHALT CONCRETE
 - BS BOTTOM OF SLOPE
 - CB CATCH BASIN
 - CMP CORRUGATED METAL PIPE
 - DYL DAY LIGHT SHOT
 - EBMUD EAST BAY MUNICIPAL UTILITY DISTRICT
 - EP EDGE OF PAVEMENT
 - FL FLOWLINE
 - HW CONCRETE HEADWALL
 - O.R. OFFICIAL RECORDS
 - PP POWER POLE
 - (R) RADIAL BEARING
 - RCP REINFORCED CONCRETE PIPE
 - R/W RIGHT OF WAY
 - T# TREE WITH IDENTIFYING NUMBER (SEE NOTE 10, SHEET 1 OF 3)
 - TS TOP OF SLOPE



DETTMER (LAGISS)
2006-114043
(4131 O.R. 539)

DETTMER (LAGISS)
2006-114043
(4131 O.R. 539)

R/W PER
6205 O.R. 201

STATE OF CALIFORNIA

LAGISS
PARCEL SIX
87-273200

$\Delta = 50^{\circ}10'12''$
 $R = 470.00'$
 $L = 411.55'$

DRAINAGE
EASEMENT
5439 O.R. 198

LAGISS
87-823198
(THREE PTR)

MATCH LINE
SEE SHEET 2

ROADWAY
EASEMENT
1338 O.R. 495

DETTMER (LAGISS)
PARCEL TWO (PORTION)
87-273200
2006-114045

DETTMER (LAGISS)
PARCEL THREE (PORTION)
87-273200
2006-114045

DETTMER (LAGISS)
PARCEL ONE (PORTION)
87-273200
2006-114045

30' SUBSURFACE AQUEDUCT EASEMENT - PARCEL AB

30' SUBSURFACE AQUEDUCT EASEMENT - PARCEL AA

30' SUBSURFACE AQUEDUCT EASEMENT - PARCEL AA

30' SUBSURFACE AQUEDUCT EASEMENT - PARCEL AA

30' SUBSURFACE AQUEDUCT EASEMENT - PARCEL AA

30' SUBSURFACE AQUEDUCT EASEMENT - PARCEL AA

30' SUBSURFACE AQUEDUCT EASEMENT - PARCEL AA

30' SUBSURFACE AQUEDUCT EASEMENT - PARCEL AA

ACALANES AVENUE

100'
EBMUD EASEMENT

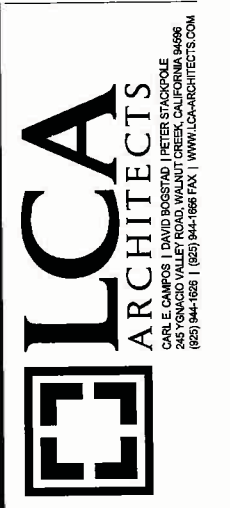
$\Delta = 04^{\circ}51'28''$
 $R = 400.00'$
 $L = 33.91'$

EBMUD
27 O.R. 64
 $N 18^{\circ}29'05'' W$
 $12.55'$

$N 75^{\circ}22'00'' E$
 $4.66'$

$N 76^{\circ}22'12'' E (R)$
 $16.50'$

MATCH LINE
SEE SHEET 2



THE TERRACES OF LAFAYETTE
DEER HILL ROAD, LAFAYETTE, CALIFORNIA

Loving & Campos Architects Inc.
RESTRICTED ARCHITECTURAL
DRAWINGS

The information, plans, designs, notes and arrangements shown on this drawing are confidential and may not be reproduced in whole or in part without the expressed written permission of LOVING & CAMPOS ARCHITECTS, INC. Drawings noted as Preliminary, Schematic and/or Concept contain information that is conceptual and subject to verification and/or change. The architect makes no claim for accuracy of conceptual information or of information supplied by others.



SCALE: AS SHOWN
DATE: 3/21/2011

REVISIONS:

SITE SURVEY

PROJECT NO. 20115003

SV-3

SHEET 3 OF 3