



City of Lafayette Traffic Calming Guidebook

March 2003



Agenda

1. Lafayette's Traffic Calming Program: Background and Introduction
2. Getting Started: Making Plans, Voting and Funding
3. Questions and Answers
4. What's Traffic like on Merriewood and Silverado Drives
5. Examples of Traffic Calming Measures
6. Next Steps

Background

- Past Speed Hump Policies
- Burton Valley Traffic Management Plan
- Transportation Forum held in June 2001
 - vehicular speeding, traffic enforcement and driver behavior
- City Council adopted Guidebook in March 2003

What is Traffic Calming?

“The management of *inappropriate* vehicular traffic speeds and volumes through educational, enforcement and/or engineering measures so that their *negative impacts* on residents, pedestrians, bicyclists and schools are *minimized*.”

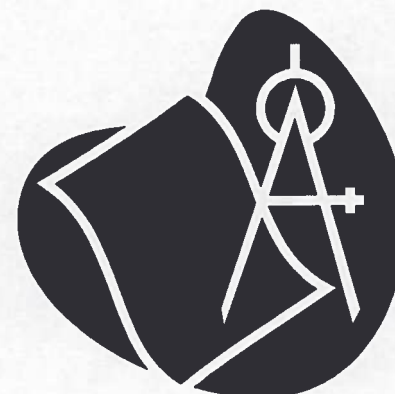
Traffic Calming and the “3Es”

Lafayette’s program is based on:

Education

Enforcement

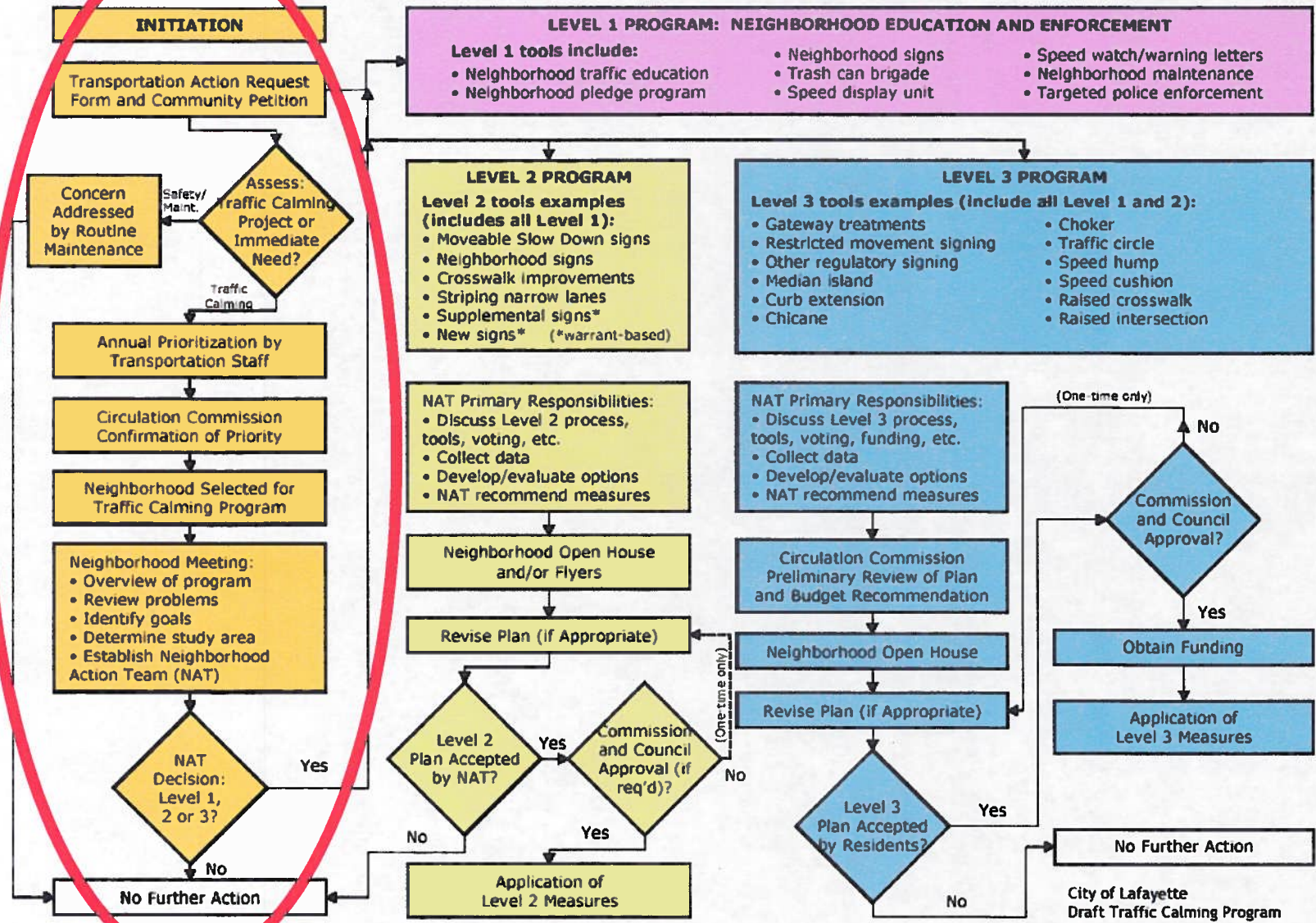
Engineering



Lafayette's Goals

- Improve driver *attention*, *awareness* and *behavior*;
- Promote safe and pleasant conditions for *all users* of neighborhood streets;
- Encourage direct *citizen involvement* in neighborhood traffic management activities;
- *Equitably address* requests for action and *balance* resident needs with all users of City streets.

Lafayette Traffic Calming Process



Initiation

- Neighborhood request
- Staff prepares annual prioritized list
- Circulation Commission reviews and confirms priorities
- Merriewood & Silverado (north of Rohrer Dr.) selected as high-priority neighborhood

Initiation, cont'd

- Hold neighborhood meeting
 - Discuss program, voting and funding
 - Review study area and capture area
 - Seek volunteers for Neighborhood Action Team (NAT)
- NAT membership established

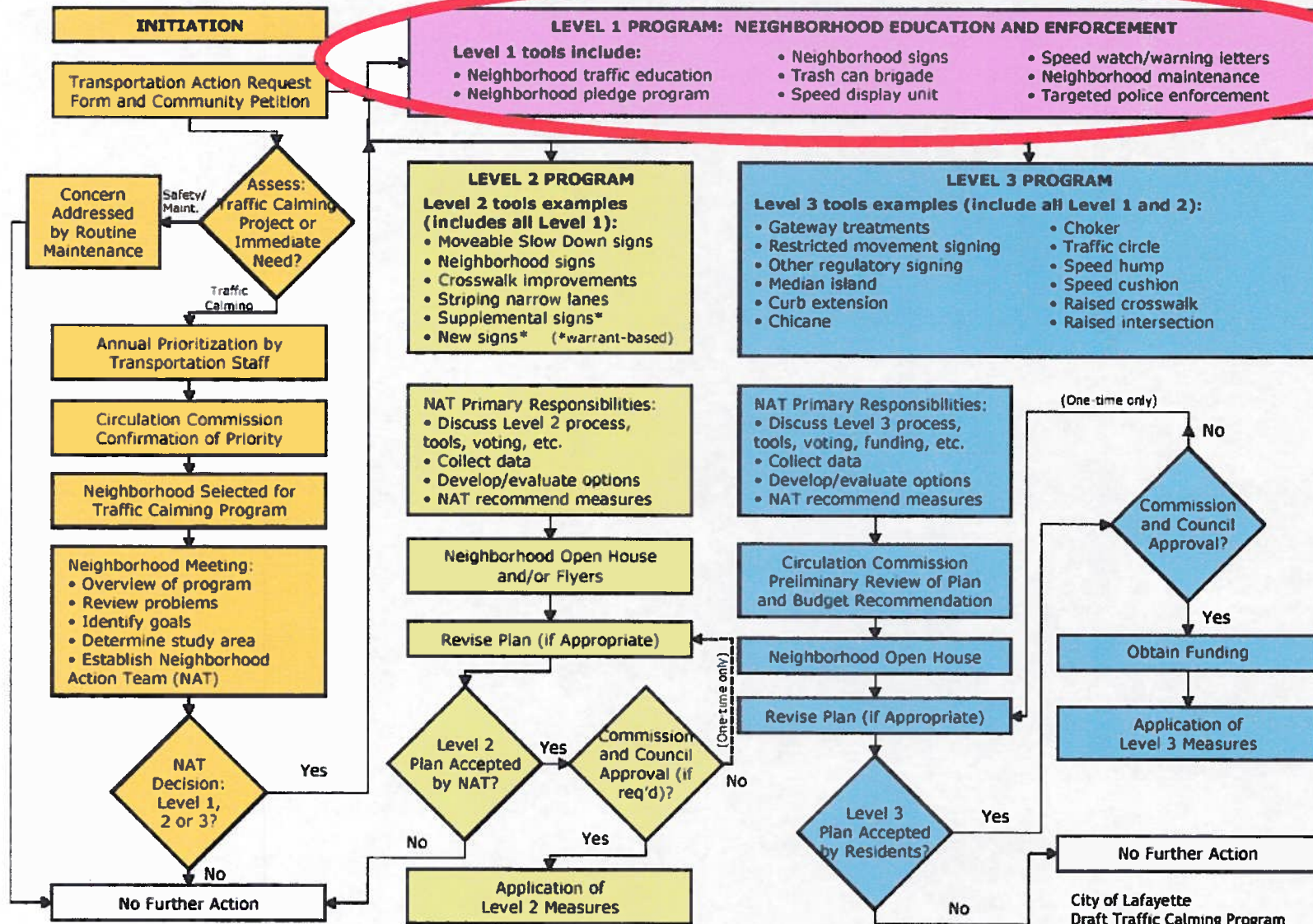


Neighborhood Action Team

- 5-15 member NAT consists of:
 - Residents from throughout study area,
 - City staff
 - Circulation Commission representative
- Meets approximately 4 times
- Serve as neighborhood resource
- Contributes significantly to overall effort
- Develops draft traffic calming plan
- Talks to residents & distributes information
- Helps arrange future neighborhood meetings



Lafayette Traffic Calming Process



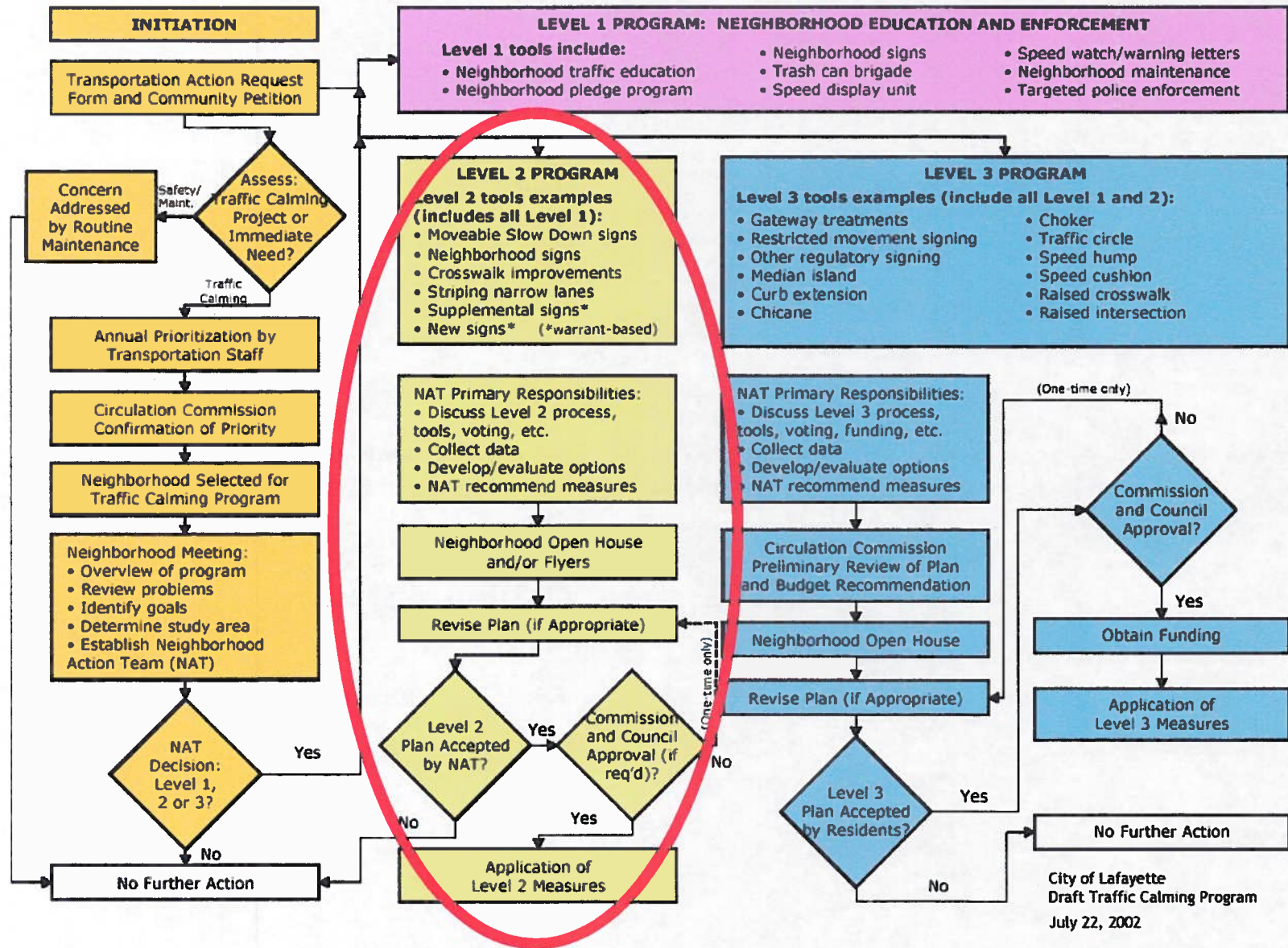
Level 1 Concepts

- Easily and quickly implemented by residents
- Enables neighborhood to be proactive, i.e., “self-help”
- Low cost
- Minimal City staffing required

Level 1 Process

- All traffic calming neighborhoods participate
- Neighborhood education and enforcement measures
- Initiated & implemented by NAT & residents
- As needed, staff provides guidance and assistance

Lafayette Traffic Calming Process



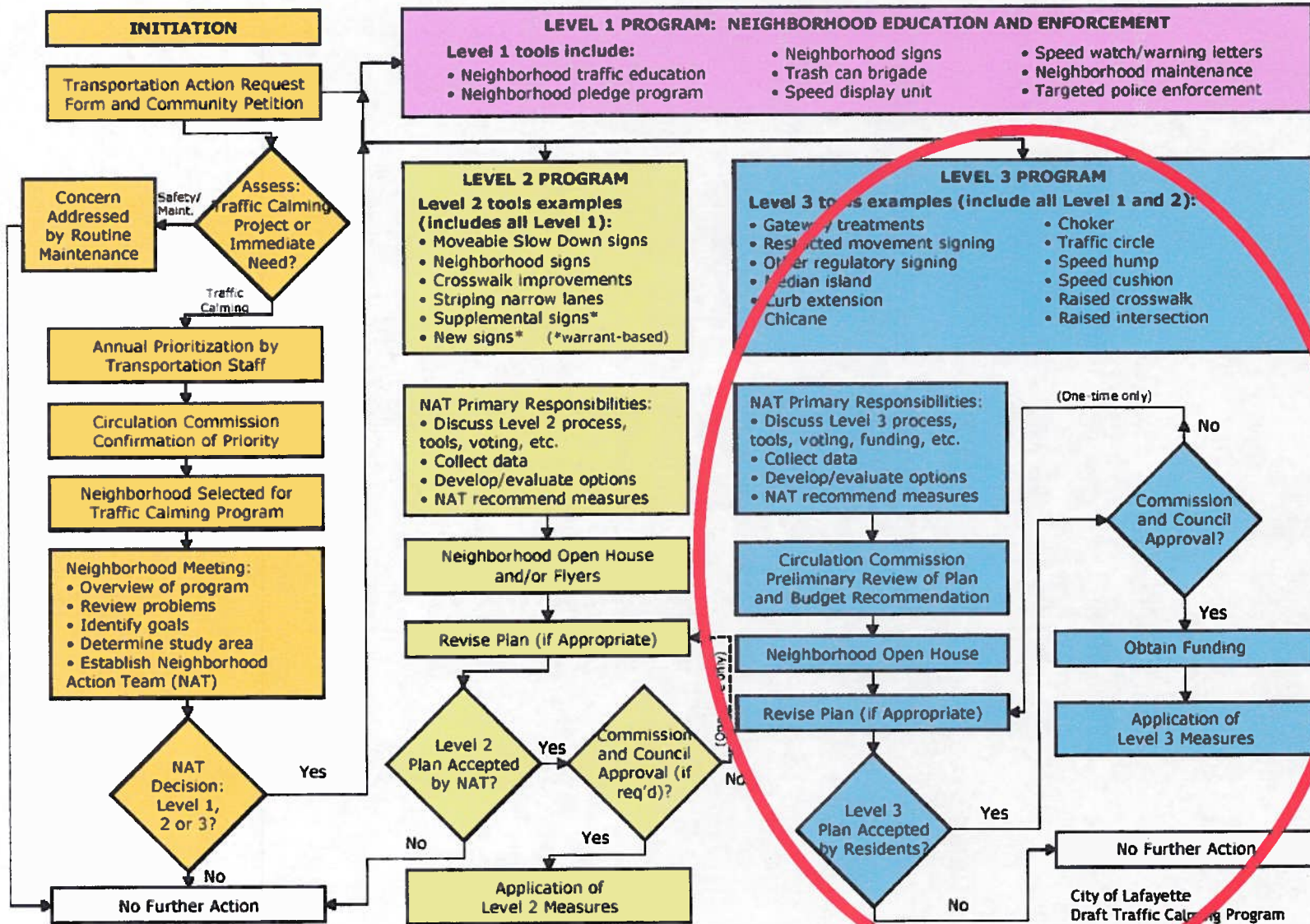
Level 2 Concepts

- Less invasive traffic calming tools
- Simpler plans
- Minimizes number of public meetings
- Streamlined board review process

Level 2 Process

- NAT recommends options
- Neighborhood open house and/or newsletter
- Refinement to plan
- Requires a majority of all NAT members vote and approve plan
- May also require review by Commission and approval by Council

Lafayette Traffic Calming Process



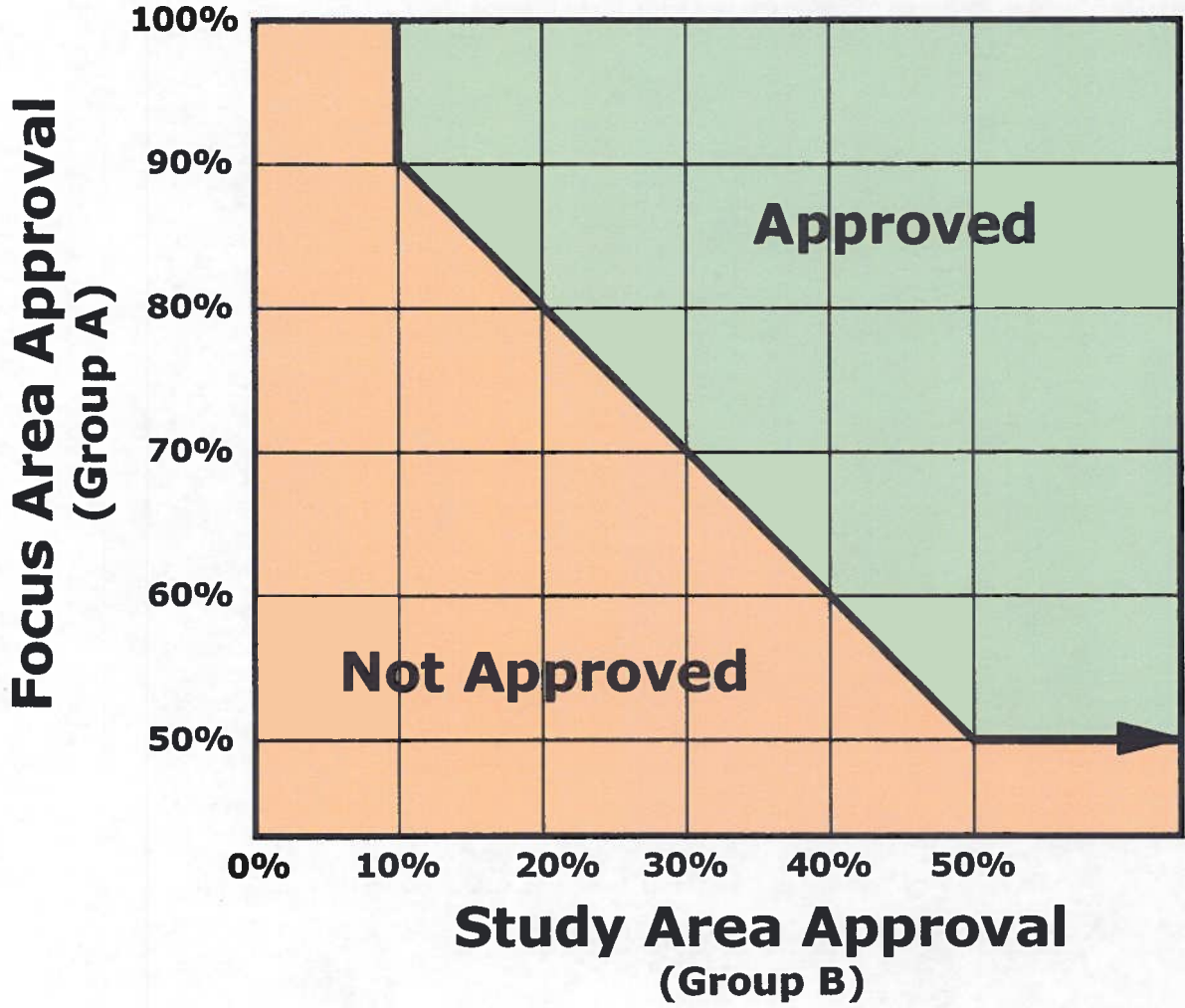
Level 3 Concepts

- Broader impact
- More expensive
- Greatest amount of resident input
- Highest amount of public review
- Greatest amount of time commitment

Level 3 Process

- Level 3 tools require engineering
- NAT recommends options
- Circulation Commission reviews plan and makes a budget recommendation
- Neighborhood refinement of plan
- Level 3 plan approved by resident voting
- Also requires final Commission review and Council approval

Level 3 Voting



Level 3 Funding

- City Council allocates annual budget
- Circulation Commission will make preliminary budget recommendation during process
- Private funding expected for Level 3 plans
- Neighbors should be prepared to conduct fundraising

Questions and Answers



To view the Traffic Calming Guidebook on-line
visit: www.ci.lafayette.ca.us

Click on Quick Links, then Transportation