

## ON THE PATH TO EXCELLENCE: *Lafayette Library & Learning Center*

*“The best libraries reflect the values, interests, and passions  
of the communities they serve”*

### *The Beginning*

Since the first three houses were built in 1848, Lafayette residents have cared deeply about improving and preserving their quality of life. In addition to children, schools, and lifelong education, the library has long been an important part of the community.

Indeed, in 1860, Lafayette residents organized the first Library in Contra Costa County. A hundred years later, in 1962, the people of Lafayette thought they had planned adequately when they built and stocked a new library with 15,000 books. Now forty-two years old, that same library building, its 6,720 square feet unaltered, serves nearly 24,000 residents and is jammed to the rafters with over 60,000 volumes – four times its planned capacity. So tight is the space that the Lafayette library must now withdraw an old book every time it buys a new one, and more than a third of Lafayette’s patrons are forced to travel to another community because they cannot find what they need in their own city library.

However, despite bookshelves that are not seismically anchored, despite the fact that almost 10% of Lafayette’s population is disabled and wheelchairs cannot fit in library bathrooms, despite myriad other deficiencies, the old library is remarkably busy. Five hundred people visit the tiny branch each day, making it the second busiest of the County’s twenty-three library branches. Lafayette’s circulation per capita is higher than that of any similarly sized community in the county.

Lafayette is a community of library users, and clearly we need a new one.

### *The Journey*

Faced with this combination of serious shortfalls, intense use, high community expectations, and dire needs, in 1996 the City agreed to purchase the old library from the County and build a new one. Since that time, Lafayette has embraced an inclusive, expansive, and detailed process for gathering information and community input about the new library: where it should be located, how it will look, and what types of programs and services should be offered inside. Important milestones include:

- In **1996**, an assessment of the existing Library concluded that it would be more cost-effective to raze the current structure and rebuild.
- In **1997**, 400 Lafayette voters were randomly surveyed regarding their support for a new library. 81% said that the library’s book collection should be expanded.

- From **1998 through 2000**, the Lafayette Library Vision 2000 Task Force, with thirty-one representatives from throughout the community, undertook a massive effort to determine library use, needs, and preferences. Surveys were completed by 582 people, eleven focus groups were conducted with eighty-eight residents, and twenty-seven major stakeholders were interviewed.

- In 2001, a report analyzed three final sites, leading to public hearings where sixty-one members of the public spoke and a final site was identified and embraced.

*(continued on back page)*

#### **The Old Library**

60,600 volumes
2.5 volumes/person
64 seats
12 computers
6,720 net square feet
0.28sf/person

#### **The New Library**

95,000 volumes
3.9 volumes/person
186 seats
42 computers
22,000 net square feet
0.92 sf/person



### LAFAYETTE LIBRARY & LEARNING CENTER

## *Kick-Off Celebration*

LAFAYETTE LIBRARY  
AND LEARNING CENTER

*A community-wide festival previewing the new Lafayette Library & Learning Center*

**April 17, 2005 • 1:00 – 5:00 pm • Downtown Lafayette**

**GREAT BOOKS LECTURE ❖ CAREER COUNSELING ❖ CAL SHAKESPEARE THEATER LIVE PERFORMANCE ❖ WALKING TOUR OF LAFAYETTE  
ZOOMOBILE ❖ TEEN POETRY SLAM ❖ COOKING / ENTERTAINING DISPLAYS ❖ ANSEL ADAMS GALLERY  
BOOK SIGNINGS / READINGS ❖ “FLAMES, FLARES & EXPLOSIONS” ❖ BIRDS OF PREY PRESENTATION ❖ HANDS-ON MAD SCIENCE**

## Lafayette Library & Learning Center (continued from front page)

■ In 2003, 175 students, parents, teachers, librarians, and school administrators completed library needs surveys. The City also conducted an architectural competition and invited all members of the community to participate in selecting the architect. Over 900 people stood in line over a two-day period to view four entries, and 357 people submitted written comments about the library designs. Later, after several public hearings, City Council, Design Review, and Planning Commission members all unanimously approved the concept design for the new Lafayette Library & Learning Center.

### The Destination

Killefer Flammang Architects has produced a smashing design for the new **Lafayette Library & Learning Center** that will surely become a beloved icon for the community. The impressive three-level structure, built from stone, wood and glass in a contemporary Bay Area Craftsman style, will meander down the First Street hill from Mount Diablo Boulevard to Golden Gate Way.

However, Lafayette residents expect their new library to be more than just a grand new building, more than a repository of books, more than a tech center, more than a comfortable place to read. Given the community's longstanding interest and investment in education, it is not surprising that Lafayette residents want the library to encourage learning among *all* of the generations who reside in Lafayette. For these reasons, the City has given at least as much consideration to the programs and partners that will enrich the library as to the physical structure itself.

Most notably, Lafayette has plans to bring a dozen of the Bay Area's most distinguished educational organizations into the community via **The Glenn Seaborg Learning Consortium**. Named in honor of the Nobel Prize winner and 45-year Lafayette resident, twelve consortium partners and two school districts will design and offer curricula, exhibits, symposia, lectures, and other educational opportunities at the new library (See related story on flap).

### A New Beginning

With public and private fundraising in progress and construction underway for the new Veterans Memorial Building (which will clear the site of the old Veterans building for the new Library), the City is singularly focused on bringing the new Library and Consortium to the community by 2008.

### Lafayette Youth Commission Donates \$500

The Lafayette Youth Commission has donated \$500 of the profit from their last Ace of Clubs event to the Lafayette Library & Learning Center. The library will be the focus for all of the Youth Commission's fundraising efforts for the remainder of this year. Future plans include two more Ace of Club events, a booth at the Lafayette Library & Learning Center Kick-Off Celebration, as well as the annual Twilight Zone and Haunted House.

### How Much Will It Cost?

*The total cost of the Library is expected to be \$33 million.*

*The money will come from the following sources:*

State Library Grant	\$11.9 M
Redevelopment Agency	\$10.1 M
Fund Raising*	\$11.0 M

**No General Fund money will be spent on construction.**

*\*Includes a \$2M endowment to cover future maintenance and programming.*

## CITY DIRECTORY

For Council Members call: 284-1968

### Council Members

Carl Anduri	<b>Mayor</b>
Ivor Samson	<b>Vice Mayor</b>
Mike Anderson	<b>Council Member</b>
Carol Federighi	<b>Council Member</b>
Don Tatzin	<b>Council Member</b>

Messages to all Council Members:  
[cityhall@lovelafayette.org](mailto:cityhall@lovelafayette.org)

### Administration

<b>General Reception and</b>	<b>284-1968</b>
<b>Steven Falk, City Manager</b>	<b>Fax: 284-3169</b>
Tracy Robinson, Admin. Srv. Dir.	<b>299-3227</b>
Gonzalo Silva, Financial Srv. Mgr.	<b>299-3213</b>
Joanne Robbins, City Clerk	<b>299-3210</b>

### Community Development

Ann Merideth, Director	<b>299-3218</b>
Tony Coe, Engineering Srv. Mgr.	<b>284-1951</b>
Niroop Srivatsa, Planning Srv. Mgr.	<b>284-1976</b>
Ron Lefler, Public Works Srv. Mgr.	<b>299-3214</b>
P.W. Hotline (to report problems)	<b>299-3259</b>

*If you observe illegal dumping in creeks & storm drains or accidental spills on roads, call Contra Costa Hazardous Materials Division 646-2286.*

### Lamorinda School Bus Program

Juliet Hansen, Program Mgr.	<b>299-3216</b>
	<b>Or 299-3215</b>

### Parks, Trails and Recreation

Jennifer Russell, Director	<b>284-2232</b>
Senior Services	<b>284-5050</b>
Teen Programs	<b>284-5815</b>

### Police Services

Emergency: 24 Hours	<b>911</b>
Police Dispatch: 24 Hours	<b>284-5010</b>
Police Business Office:	<b>283-3680</b>

*Anonymous Tipline, Traffic Enforcement, Suggestions & LEARN (Laf. Emergency Action Response Network), 299-3232 X 2205*

<b>Fax</b>	<b>284-3169</b>
------------	-----------------

<b>Address</b>	<b>3675 Mt. Diablo Blvd. #210 Lafayette, CA 94549</b>
----------------	---

Website:	<b>www.ci.lafayette.ca.us</b>
----------	-------------------------------

**E-MAIL:** Council/staff members can be reached via e-mail using this address format:  
**First Initial + Last Name @lovelafayette.org**  
**Example: SFalk@lovelafayette.org**



**City of Lafayette**  
3675 Mt. Diablo Blvd. #210  
Lafayette, CA 94549

PRSR STD  
U.S. Postage  
**PAID**  
Lafayette, CA  
Permit No. 161

**Postal Customer**  
**Lafayette, CA 94549**



GLENN SEABORG  
LEARNING CONSORTIUM

# GLENN SEABORG LEARNING CONSORTIUM

*DESIGN A SETTLEMENT ON MARS*

*PET A REPTILE ❖ LEARN TO SPEAK RUSSIAN*

*LOWER YOUR CHOLESTEROL ❖ DEBATE LOCAL & NATIONAL ISSUES ❖ COMPOSE A SONNET*

You will be able to do all of this and more through programs offered by the **Glenn Seaborg Learning Consortium** at the Lafayette Library. Composed of 12 of the most prestigious educational and cultural organizations in the Bay Area, the consortium will be the first of its kind at any American public library. Programs will be aimed at a broad audience so if you are between the ages of 5 and 100, there will be something for you!

**1 California Shakespeare Theater** – Nourishing the imaginations of audiences, artists, and learners of all ages through the plays of William Shakespeare.



**2 Chabot Space & Science Center** – An innovative teaching and learning center focusing on astronomy, space sciences and the interrelationships of all sciences.



**3 Commonwealth Club of California** – Illuminating important ideas for 101 years.



**4 Greenbelt Alliance** – Protecting open space and promoting livable communities in partnership with diverse coalitions on public policy development, advocacy and education.



**5 John F. Kennedy University** – A rich learning environment where students and faculty collaborate in a spirit of inquiry, dialogue and service.



**6 John Muir / Mount Diablo Health System** – A premier healthcare provider in the San Francisco Bay Area.



**7 Lindsay Wildlife Museum** – Connecting people and wildlife to inspire responsibility and respect for the world we share.



Lindsay Wildlife Museum

**8 University of California Lawrence Hall of Science** – Developing model programs for teaching and learning science and mathematics, and disseminating them to an ever-increasing audience.



**9 Oakland Museum of California** – The only museum devoted to the art, history, and natural sciences of California.



**10 The Oakland Zoo in Knowland Park** – The East Bay's zoo.



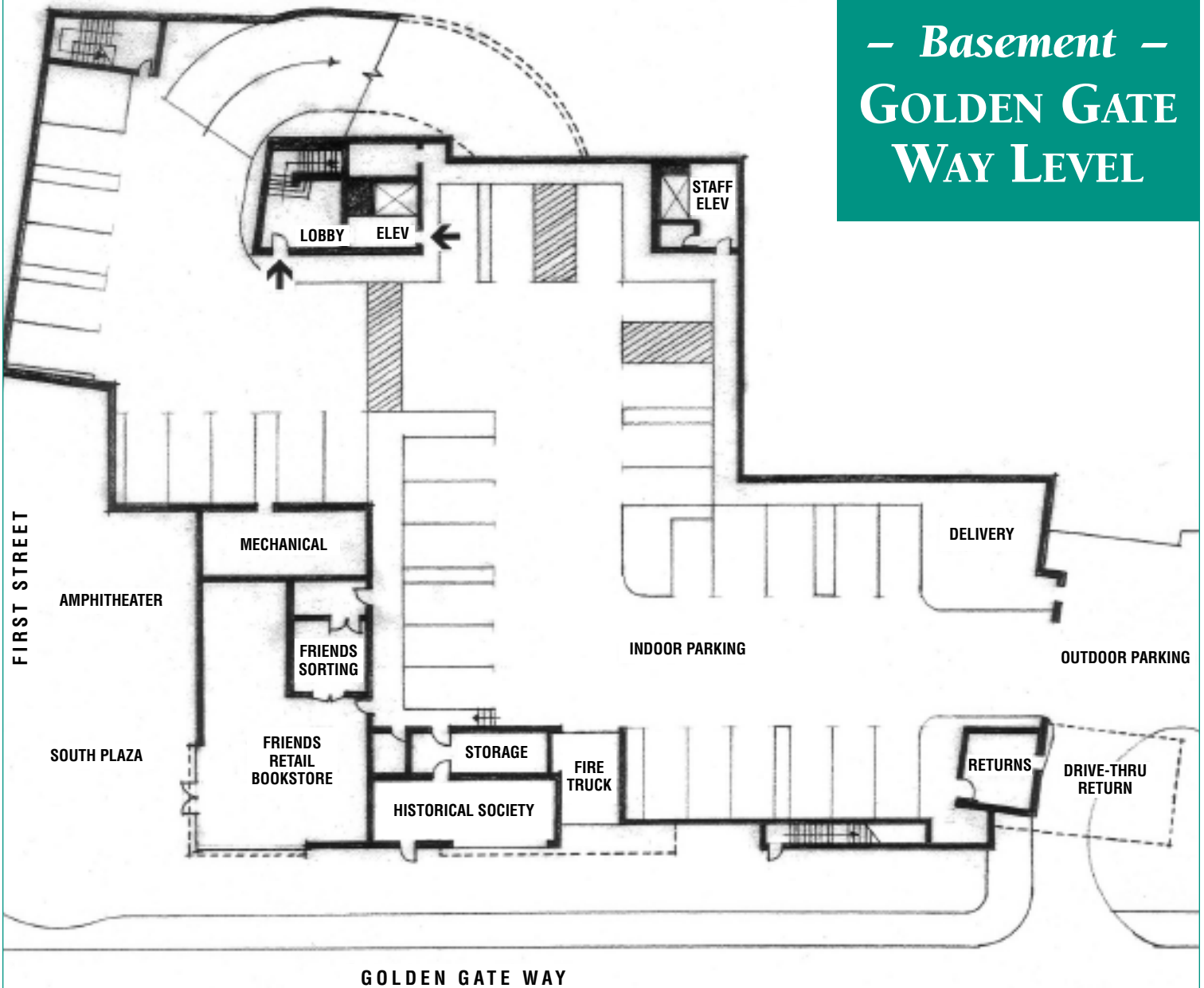
SAINT MARY'S COLLEGE  
of California

**11 Saint Mary's College** – Celebrating the classical tradition of liberal arts education.

**12 University of California Institute of Governmental Studies** – Advancing interdisciplinary research in American politics, government, and public policy.



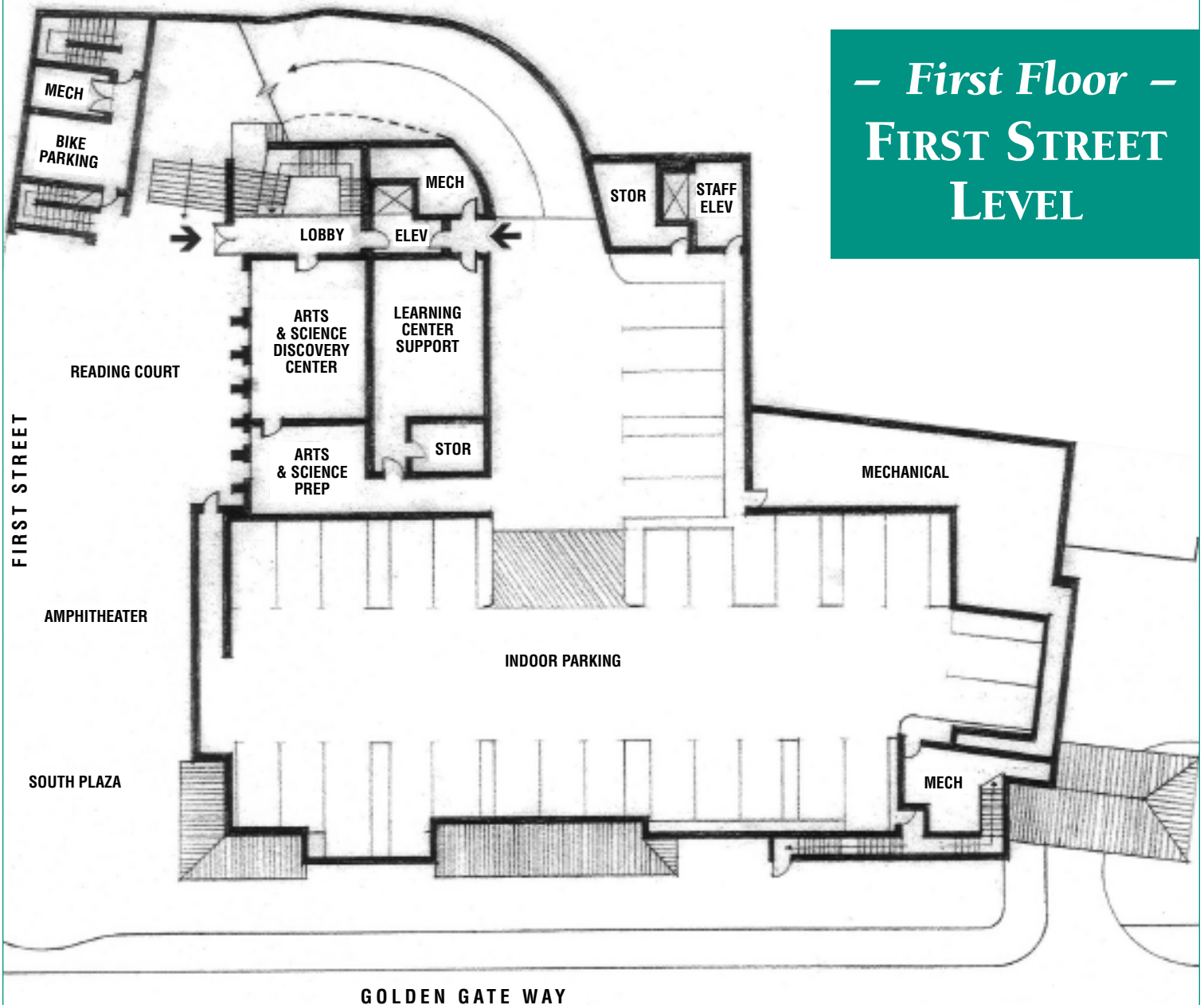
– Basement –  
**GOLDEN GATE  
WAY LEVEL**



**Features:**

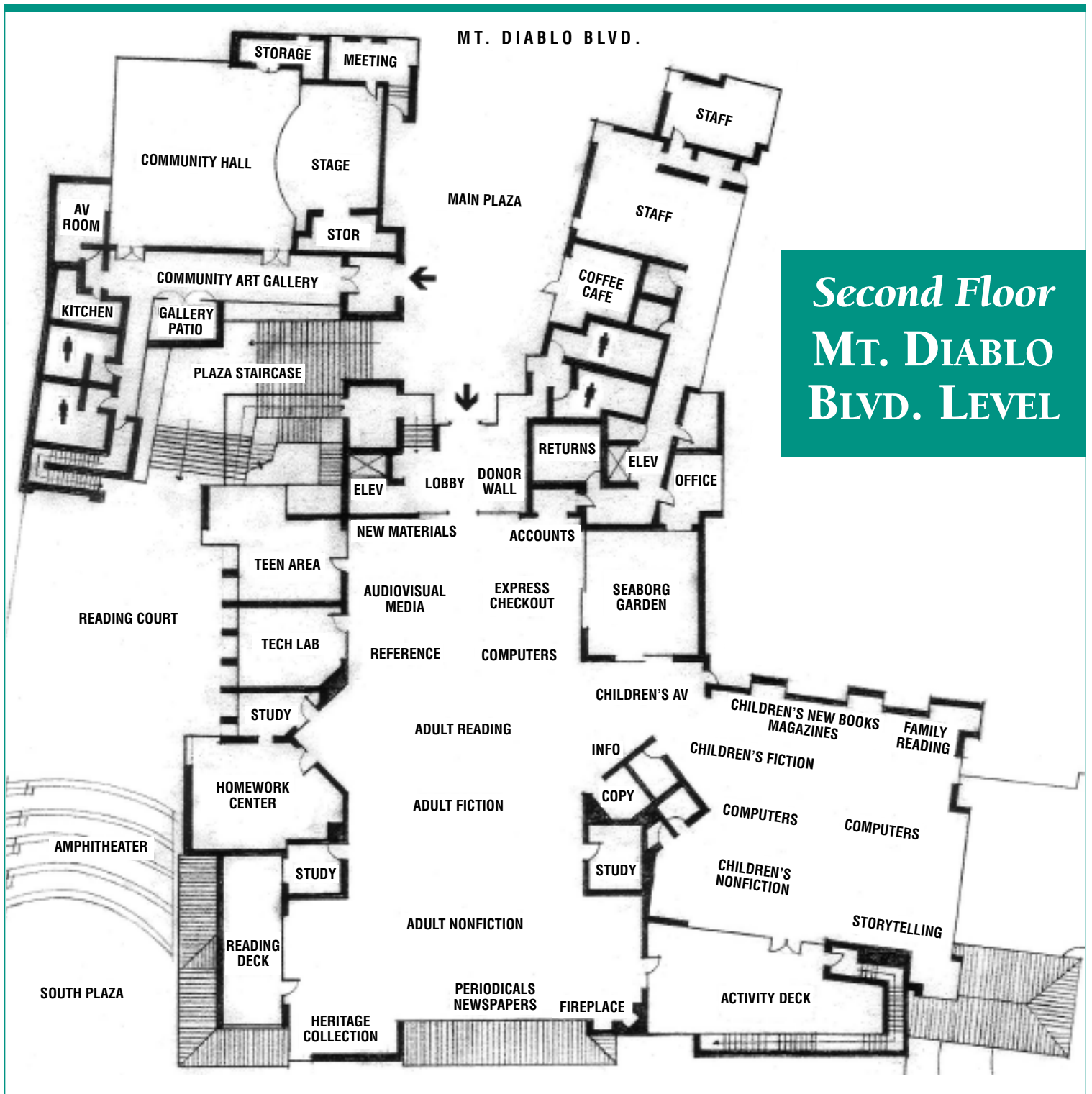
- Friends of the Lafayette Library “Nearly New” Retail Book Store with drop-off, sorting, and storage space
- Lafayette Historical Society exhibit and archive study and storage space
- Lafayette’s first Fire Engine “Old Betsy” on permanent display
- Drive-through materials return
- South Plaza for outdoor activities and programs
- Automated materials sorting
- 34 indoor parking spaces, including 4 handicapped spaces
- Digital counter for available parking at site entrance

*– First Floor –*  
**FIRST STREET  
 LEVEL**



***Features:***

- Arts & Science Discovery Center for 30-60 participants
- Amphitheater and Reading Court for outdoor activities and programs
- 30 indoor parking spaces
- Indoor bicycle parking



*Second Floor*  
**MT. DIABLO**  
**BLVD. LEVEL**

- Collection of 95,000 books and audiovisual materials
- 42 public computers, a Technology Lab, laptop access, and wireless connectivity
- 186 reader seats
- Large adult area with a fireplace and quiet corners for reading and studying

**Features:**

- Separate Teen Area and Homework Center
- Separate children's area with storytelling and class visit space for 30 children
- Three group study rooms
- Two decks for outside reading and quiet activities

- Contemplative garden in honor of Glenn Seaborg
- Community Hall with flexible seating for up to 220 people, performance platform, and state-of-the-art technology
- Gallery space for art and local history displays
- Coffee café with outdoor seating