

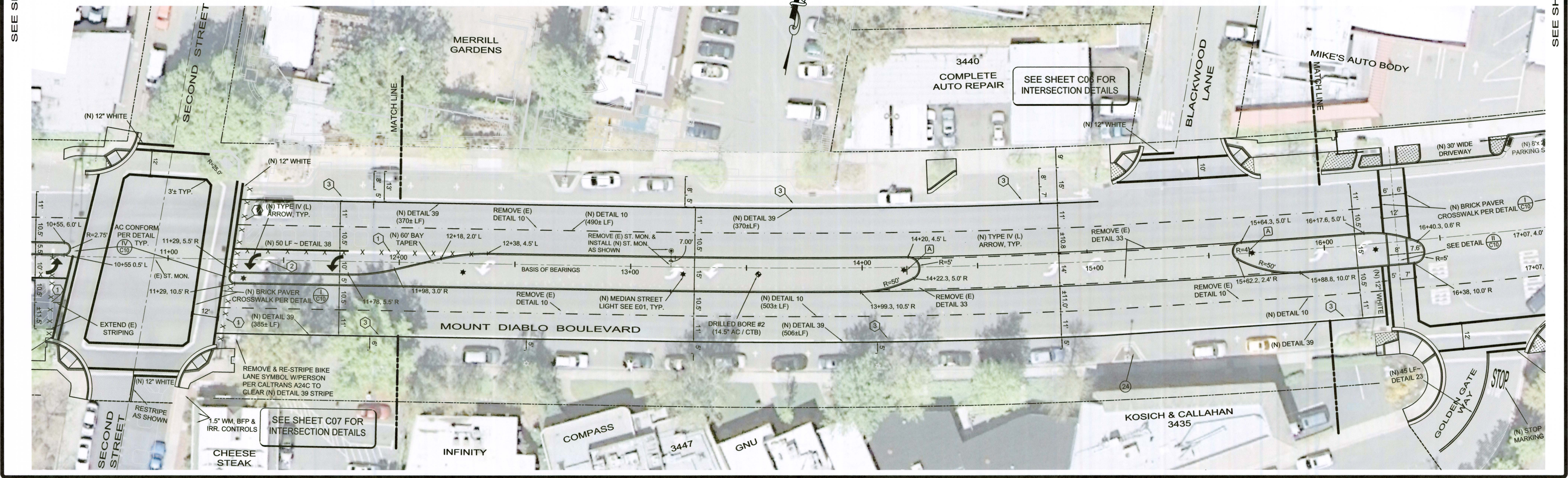
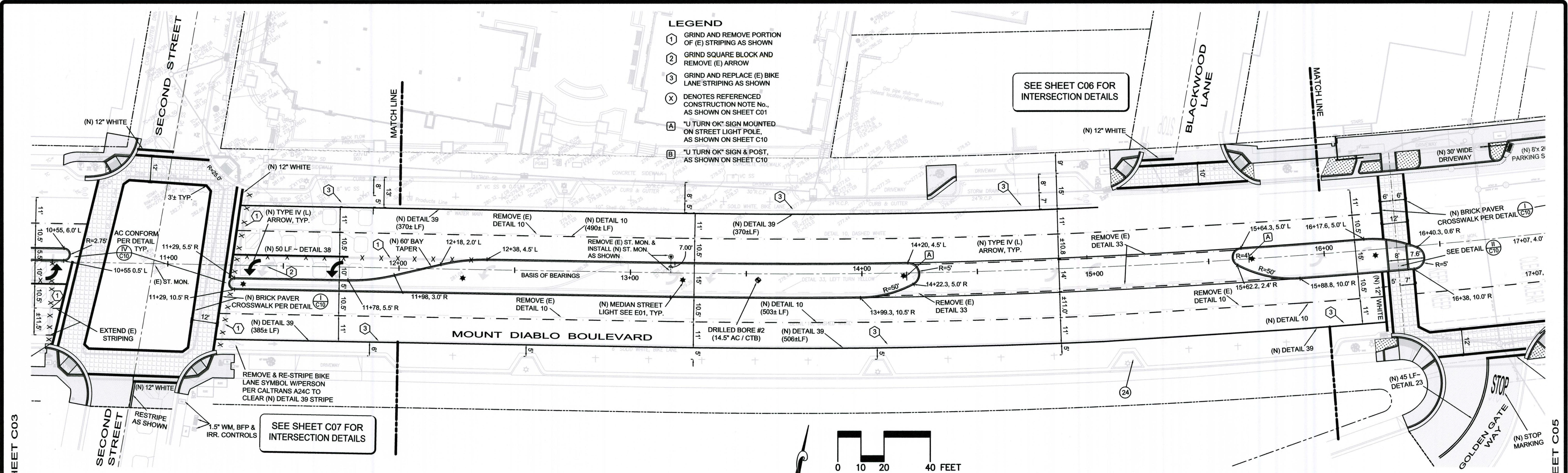
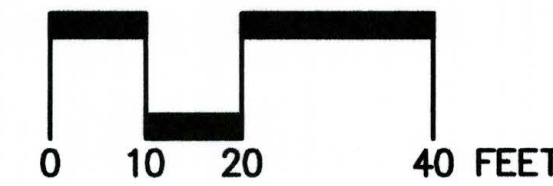
- LEGEND**
- ① GRIND AND REMOVE PORTION OF (E) STRIPING AS SHOWN
 - ② GRIND SQUARE BLOCK AND REMOVE (E) ARROW
 - ③ GRIND AND REPLACE (E) BIKE LANE STRIPING AS SHOWN
 - ⊗ DENOTES REFERENCED CONSTRUCTION NOTE No., AS SHOWN ON SHEET C01
 - A "U TURN OK" SIGN MOUNTED ON STREET LIGHT POLE, AS SHOWN ON SHEET C10
 - B "U TURN OK" SIGN & POST, AS SHOWN ON SHEET C10

SEE SHEET C06 FOR INTERSECTION DETAILS

SEE SHEET C07 FOR INTERSECTION DETAILS

SEE SHEET C06 FOR INTERSECTION DETAILS

SEE SHEET C07 FOR INTERSECTION DETAILS



NO.	DATE	BY	REVISIONS

SCALE 1" = 20'

DATE 08/30/2013

ENGINEER H. N.

PROJECT NO. 12019

HUMANN COMPANY INC.

ENGINEERING - SURVEYING
1021 BROWN AVE. LAFAYETTE, CA 94549
PH (925)283-5000 FAX (925)283-3578

REGISTERED PROFESSIONAL ENGINEER
No. 29528
CIVIL
STATE OF CALIFORNIA
IZZAT S. NASHASHIBI R.C.E. 29528

CITY OF LAFAYETTE
PROJECT No. 014-9696
MOUNT DIABLO BLVD / FIRST STREET TO BROWN AVENUE
EAST END PED/BIKE AND STREETSCAPE IMPROVEMENTS PROJECT
LAFAYETTE CALIFORNIA

STA: 12+00 TO 16+00

REVIEWED BY:
CITY OF LAFAYETTE

TONY COE
ENGINEERING SERVICES MANAGER

DATE

SHEET **C04**
OF 11 SHEETS

PROJ. NO. 014-9696