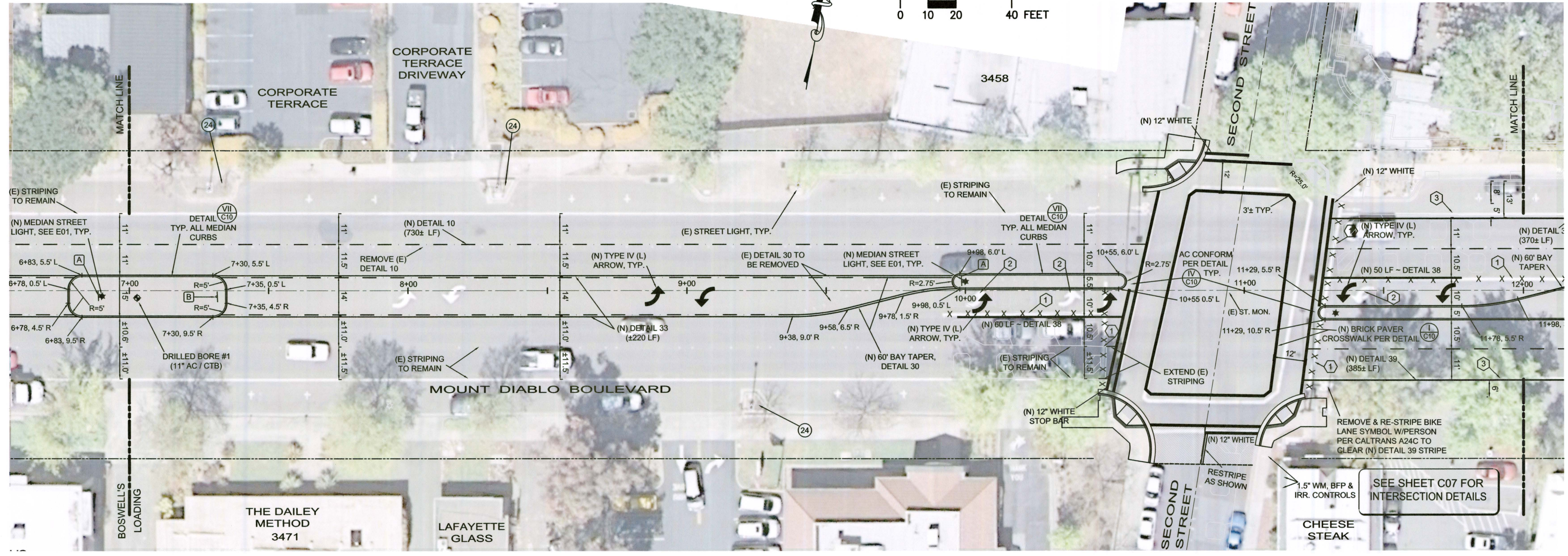
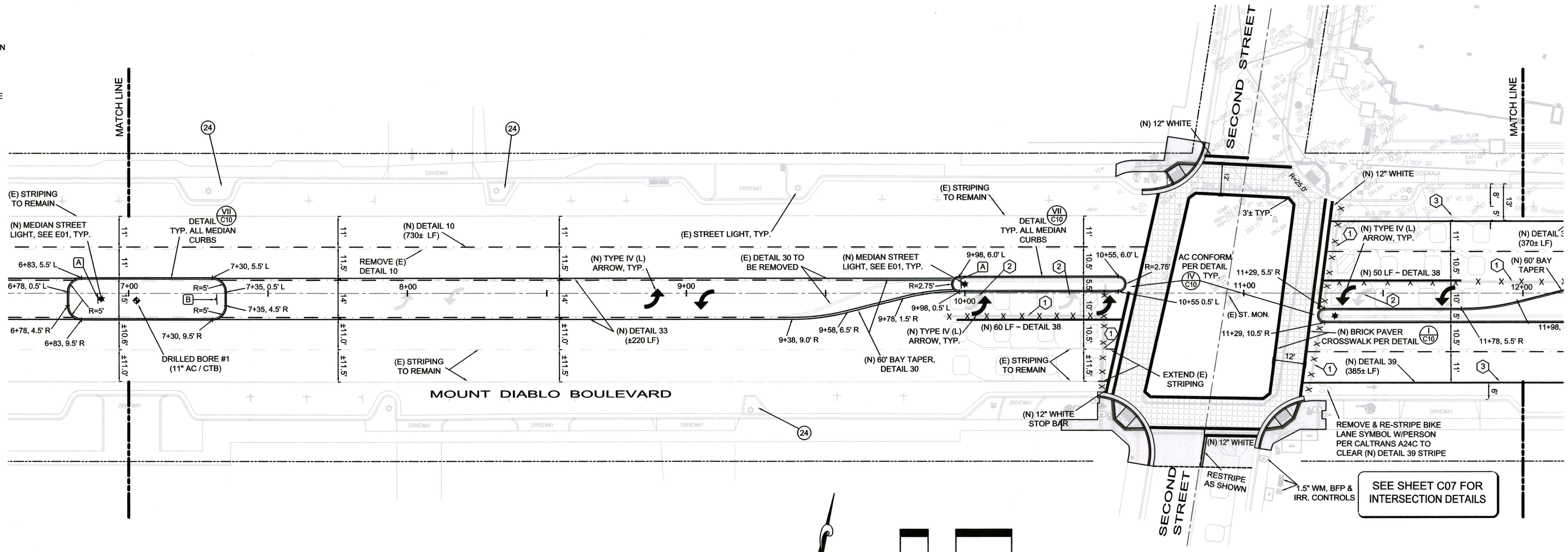


- LEGEND**
- ① GRIND AND REMOVE PORTION OF (E) STRIPING AS SHOWN
 - ② GRIND SQUARE BLOCK AND REMOVE (E) ARROW
 - ③ GRIND AND REPLACE (E) BIKE LANE STRIPING AS SHOWN
 - X DENOTES REFERENCED CONSTRUCTION NOTE NO., AS SHOWN ON SHEET C01
 - A "U TURN OK" SIGN MOUNTED ON STREET LIGHT POLE, AS SHOWN ON SHEET C10
 - B "U TURN OK" SIGN & POST, AS SHOWN ON SHEET C10



SEE SHEET C02

SEE SHEET C04

NO.	DATE	BY	REVISIONS

SCALE	1" = 20'
DATE	08/30/2013
ENGINEER	H. N.
PROJECT NO.	12019

HUMANN COMPANY INC.

ENGINEERING - SURVEYING
1021 BROWN AVE. LAFAYETTE, CA 94549
PH (925)283-5000 FAX (925)283-3578

REGISTERED PROFESSIONAL ENGINEER
No. 29528
STATE OF CALIFORNIA
Issat S. NASHASHIBI
R.C.E. 29528

CITY OF LAFAYETTE
PROJECT No. 014-9696
MOUNT DIABLO BLVD / FIRST STREET TO BROWN AVENUE
EAST END PED/BIKE AND STREETSCAPE IMPROVEMENTS PROJECT
LAFAYETTE CALIFORNIA
STA: 7+00 TO 12+00

REVIEWED BY:
CITY OF LAFAYETTE
 TONY COE
ENGINEERING SERVICES MANAGER

SHEET **C03**
OF 11 SHEETS
PROJ. NO. 014-9696