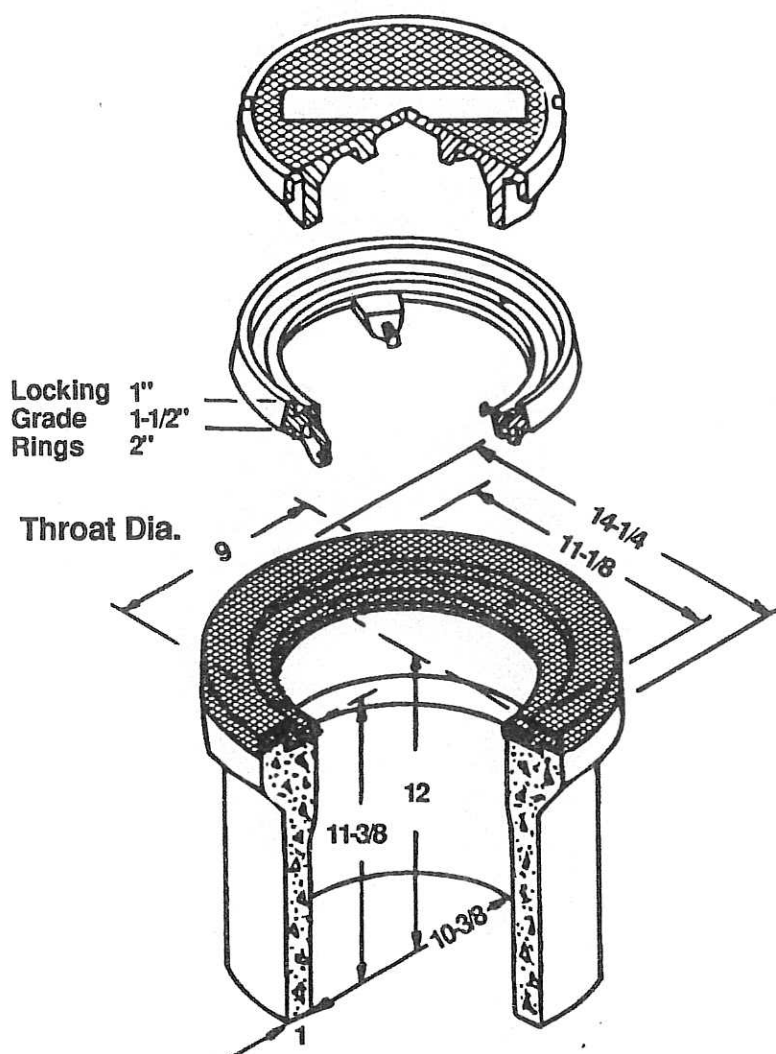


APPENDIX E

VALVE BOX

G5 Traffic ValveBox

10-3/8" I.D. x 12"



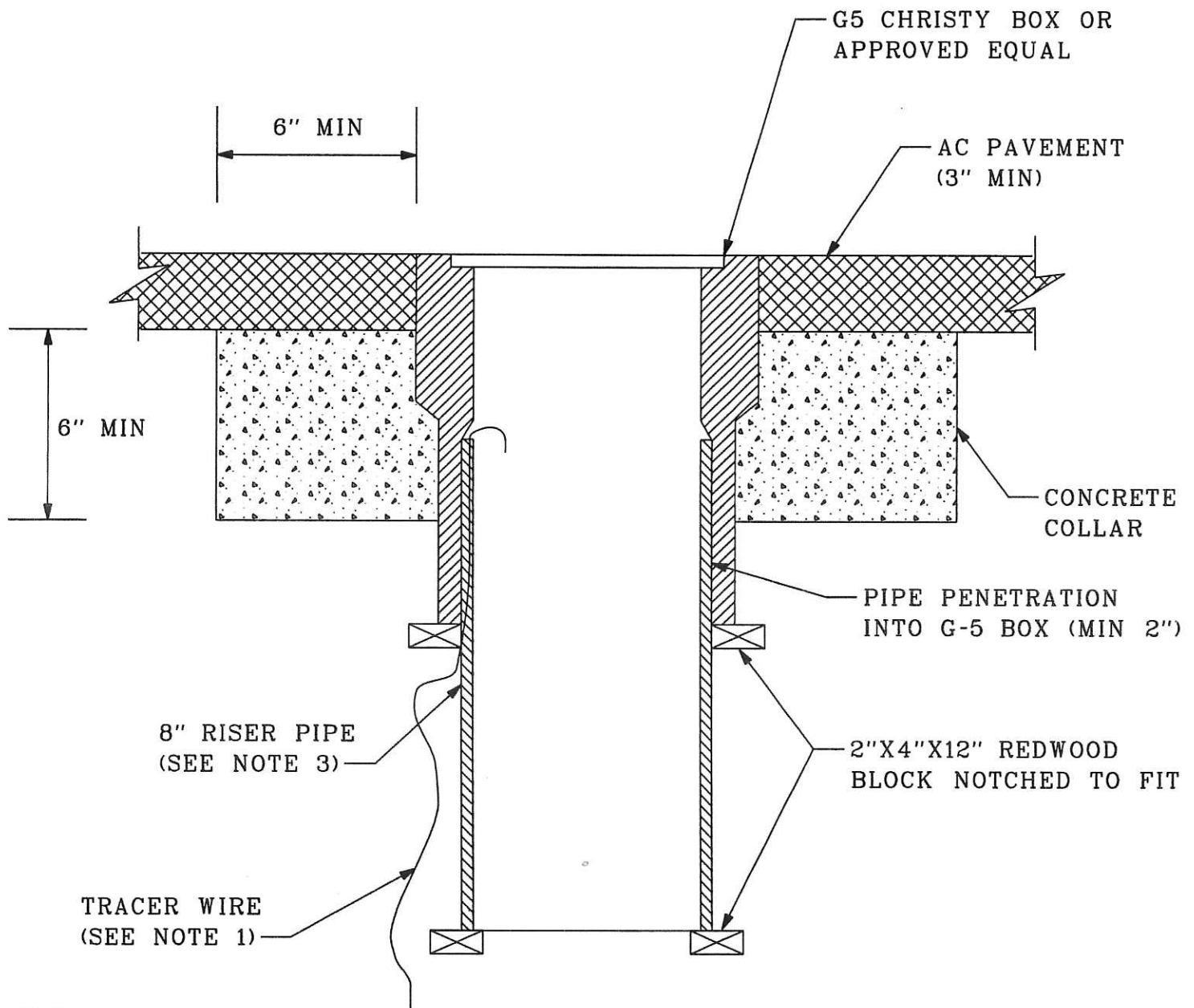
The largest throat diameter for any box in its size range permits quick, easy valve adjustments. The large throat also makes this unit highly adaptable as a survey monument box.

Unique locking grade rings assure permanence and quality of surface grades when streets are re-paved. Telescoping extensions facilitate installation at jobsite and act to isolate pipeline from road shock.

This valve box is specifically designed to meet modern day requirements. The carefully engineered iron lid and ring seat furnishes a complete unit reducing the danger of lid "pop-out" in heavy traffic areas. Vandal resistance is optional at extra cost by the addition of hold down screws. Approximate dimensions shown.

CHRISTY ORDERING CODE	ITEM	APPROX. SHIPPING WEIGHT	DESCRIPTION
G5BOX	Box	61	G5 Traffic Valve Box (10-3/8" I.D. x 12" High)—36 Per Pallet
G5C	Lid	10	Cast Iron, Traffic
G5X12	Extension	29	12" Concrete—32 Per Pallet
G5XP8	Extension	1	ADS 8", Plastic
G5XP12	Extension	1	ADS 12", Plastic
F14XP120	Extension	11	ADS 10' Lengths, Plastic
G5GR10	Grade Ring	10	1" High, Cast Iron
G5GR15	Grade Ring	14	1-1/2" High, Cast Iron
G5GR20	Grade Ring	17	2" High, Cast Iron





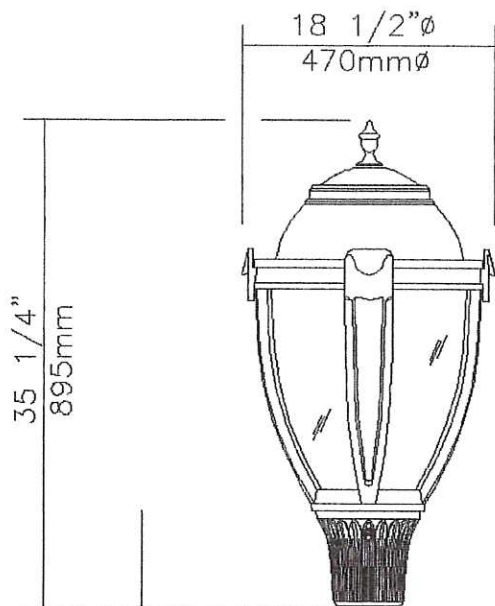
NOTES:

1. AC PAVEMENT TO COMPLY WITH STREET PAVEMENT REQUIREMENTS
2. FOR VALVE BOXES INSTALLED IN NON TRAFFIC AREAS, CONCRETE COLLAR SHALL BE EXTENDED TO FINISH GRADE AND SLOPED TO DRAIN AWAY FROM LID.
3. RISER PIPE TO BE ONE CONTINUOUS PIECE, APPROVED PVC CLASS 150, 200 OR STEEL PIPE WITH A MIN 10 GA WALL THICKNESS
4. IF TRACER WIRE IS OF SUFFICIENT LENGTH RE-ROUTE AS SHOWN

VALVE BOX WITH CAST IRON TRAFFIC LID
NTS

APPENDIX F

STREET LIGHT POLE & LUMINAIRE ASSEMBLY



EPA: 1.76 sq ft / weight: 45 lb (20.45 kg)

Note: 3D image may not represent color or option selected.
Logos above include link, click to access.



Qty 1 Luminaire L80-90W49LED4K-ES-[AC-001]-CS-LE3-240-[SF4-002]-FN2-PH7-BKTX

Description of Components:

Finial: Decorative cast 356 aluminum, mechanically assembled.

Hood: A spun aluminum dome, mechanically assembled to the cast aluminum heat sink.

Guard: In a round shape with 4 arms, this guard is a one-piece cast 356 aluminum mechanically assembled to the fitter.

Access-Mechanism: A gravity die cast 356 aluminum frame with latch and hinge. The mechanism shall offer toolfree access to the inside of the luminaire. An embedded memory-retentive gasket shall ensure weatherproofing.

Globe: (AC-CS), Made of one-piece seamless injected-molded satin clear acrylic. The globe is assembled on the access-mechanism. **Inside of globe is lightly glassblasted to diffuse light.**

Lamp: (Included), Lamp type Philips Lumileds Rebel ES. Composed of 49 high-performance white LEDs, 90w lamp wattage. Color temperature of 4000 Kelvin nominal, 70 CRI. Operating lifespan after which the system emits 70% of its original lumen output, all of those parameters are tested for 100% of light engines. Use of a metal core board insures greater heat transfer and longer lifespan of the light engine.

Optical System: (LE3), I.E.S type III (asymmetrical). Composed of high-performance acrylic collimators, optimized with varying beam angles to achieve desired distribution. Performance shall be tested per LM63 and LM79 (IESNA) certifying its photometric performance. Street-side indicated.

Heat Sink: Made of cast aluminum optimising the LEDs efficiency and life. Product does not use any cooling device with moving parts (only passive cooling device)

Driver: High power factor of 90%. Electronic driver, operating range 50-60 Hz. **Auto-adjusting to a voltage between 120 and 277 volt AC rated for both application line to line or line to neutral, Class II**, THD of 20% max. Maximum ambient operating temperature from -40F(-40C) to 130F(55C) degrees. Certified in compliance to cULus requirement. Weather tightness rating IP66. Assembled on a unitized removable tray with Tyco quick disconnect plug resisting to 221F(105C) degrees.

The current supplying the LEDs will be reduced by the driver if the internal temperature exceeds 185F(85C), as a protection to the LEDs and the electrical components. Output is protected from short circuits, voltage overload and current overload. Automatic recovery after correction.

Surge Protector: LED Driver 3 poles 10KV surge Protectors that protect Line-Ground, Line-Neutral, and Neutral-Ground in accordance with IEEE / ANSI C62.41.2 guidelines.

Fitter: (SF4-002), Cast 356 aluminum c/w 4 set screws 3/8-16 UNC. **Slip-fits on a 3"(76mm) outside diameter x 3" (76mm) long tenon.**

Luminaire Options: (PH7), Photoelectric Cell, Button Type

Miscellaneous

Description of Components:

Wiring: Gauge (#14) TEW/AWM 1015 or 1230 wires, 6" (152mm) minimum exceeding from luminaire.

Hardware: All exposed screws shall be stainless steel with Ceramic primer-seal basecoat to reduce seizing of the parts. All seals and sealing devices are made and/or lined with EPDM and/or silicone.

Finish: Color to be **black textured (BKTX)**. Application of a polyester powder coat paint. (4 mils/100 microns). The chemical composition provides a highly durable UV and salt spray resistant finish in accordance to the ASTM-B117-03 standard and humidity proof in accordance to the ASTM-D2247-68 standard.

Quality Control: The manufacturer must provide a written confirmation of its ISO 9001-2008 and ISO 14001-2004 International Quality Standards Certification.

Certification: The manufacturer will have to supply a copy of approval products certificate, CSA or UL.

Web site information details: Click on any specific information details you need:

[Paint finish](#) / [Warranties](#) / [Installation pictures](#) / [Driver Spécification](#) / [ISO 9001-2008 Certification](#) / [ISO 14001-2004 Certification](#) / [ISO 9001-2008 Certification](#) / [ISO 14001-2004 Certification](#) / [cULus Certification](#)

Lamp technical information for L80 L81 L82									
LED = Philips Lumileds Rebel ES, CRI = 70, CCT = 4000K (+/- 350K)									
LED rated life = 100,000 hrs ¹ - Driver rated life = 50,000 hrs									
Lamp	Typical delivered lumens ²	Typical lamp wattage (W)	Typical system wattage ³ (W)	Typical current @ 120 V (A)	Typical current @ 240 V (A)	Typical current @ 277 V (A)	LED current (mA)	HPS equivalent ⁴	Luminaire Efficacy Rating (lm/W)
40W49LED4K-ES	3100	42	47	0.39	0.20	0.17	285	70 W	66
65W49LED4K-ES	4185	65	72	0.60	0.30	0.26	428	100 W	58
90W49LED4K-ES	4970	90	102	0.85	0.43	0.37	571	150 W	49

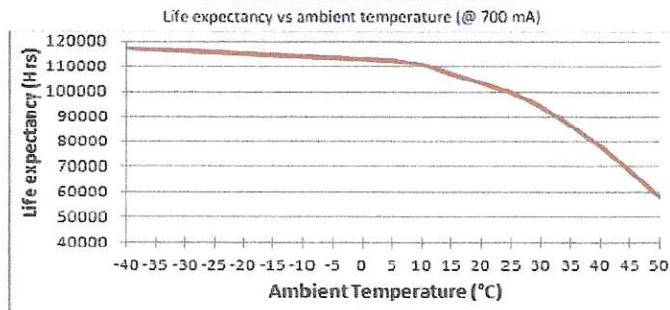
¹ L70 = 100,000 hrs (at ambient temperature = 25°C and forward current = 700 mA)
² May vary depending on the optical distribution used
³ System wattage includes the lamp and the LED driver
⁴ Compared to Contemporary lantern (equivalence should always be confirmed by a photometric layout)

Photometric tests are done at 25°C ambient (as requested by LM-79). If our product is used at a different ambient temperature (nighttime average), you can multiply the lumens by the percentage below.

Ambient (°C)	-20	-10	0	5	10	15	20	25
% Flux	105.8	105.1	104.2	103.8	102.8	101.9	101	100

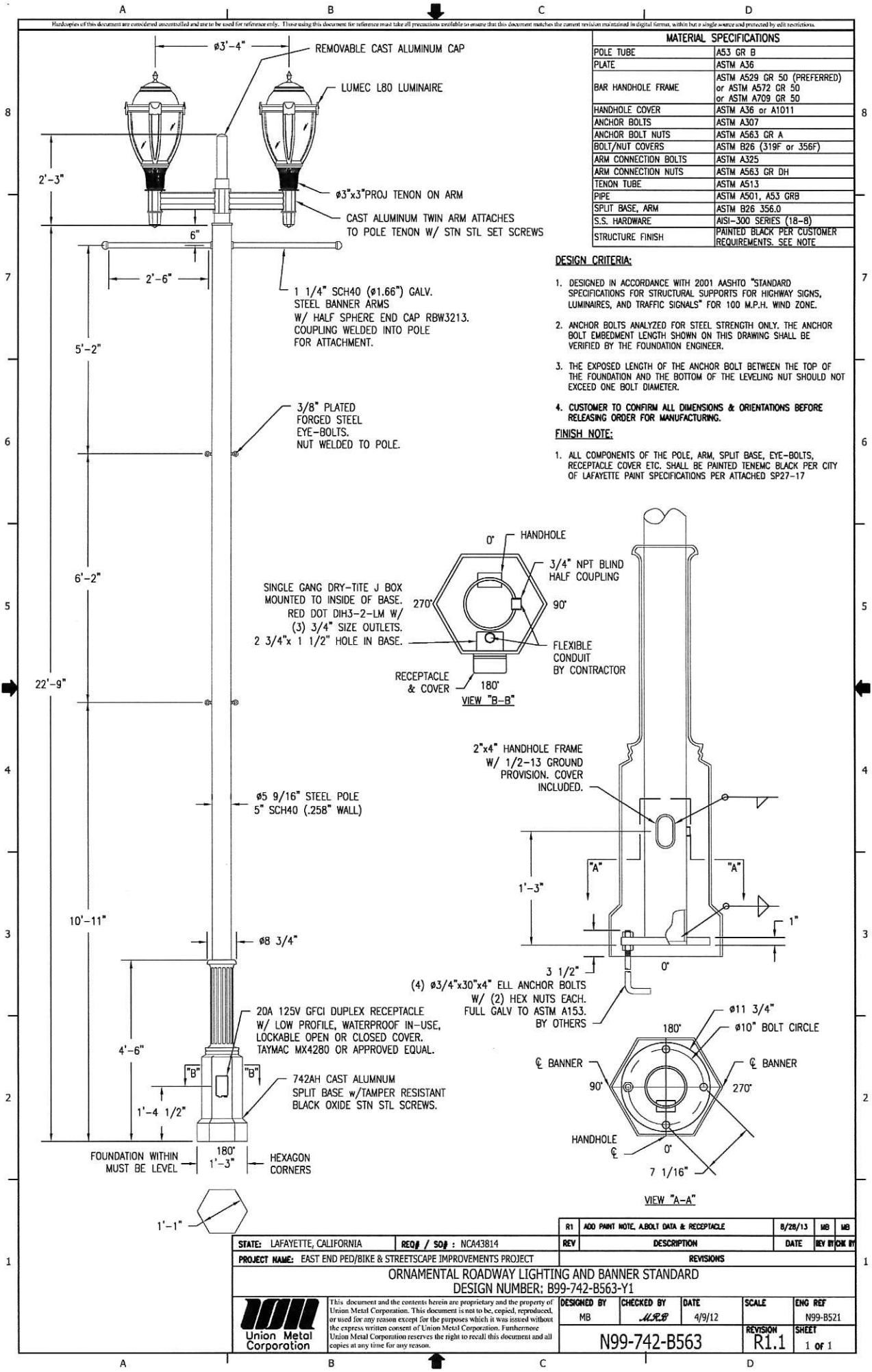
As 4000K is our standard, photometric tests are only done with this CCT. If you want to use another CCT (6000K or 3000K) you can multiply the lumens by the percentage below

CCT (K)	6000	4000	3000
% Flux	100	100	59.28



Note: Due to rapid and continuous advances in LED technology, LED luminaire data is subject to change without notice and at the discretion of Philips.

Handcopies of this document are considered uncontrolled and are to be used for reference only. Those using this document for reference must take all precautions available to ensure that this document matches the current revision maintained in digital format, within but a single source and protected by edit restrictions.



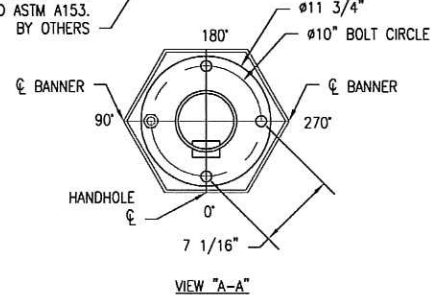
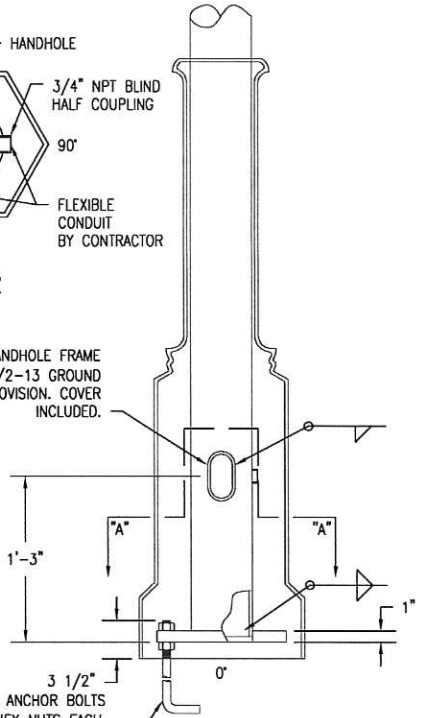
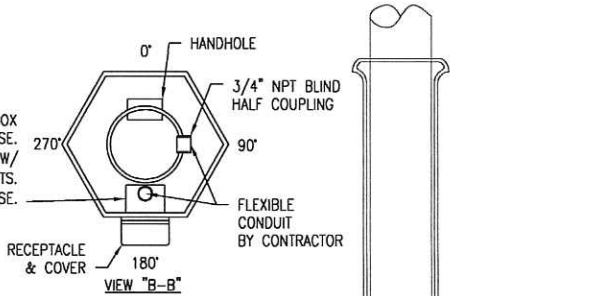
MATERIAL SPECIFICATIONS	
POLE TUBE	A53 GR B
PLATE	ASTM A36
BAR HANDHOLE FRAME	ASTM A529 GR 50 (PREFERRED) or ASTM A572 GR 50 or ASTM A709 GR 50
HANDHOLE COVER	ASTM A36 or A1011
ANCHOR BOLTS	ASTM A307
ANCHOR BOLT NUTS	ASTM A563 GR A
BOLT/NUT COVERS	ASTM B26 (319F or 356F)
ARM CONNECTION BOLTS	ASTM A325
ARM CONNECTION NUTS	ASTM A563 GR DH
TENON TUBE	ASTM A513
PIPE	ASTM A501, A53 GRB
SPLIT BASE, ARM	ASTM B26 356.0
S.S. HARDWARE	AISI-300 SERIES (18-8)
STRUCTURE FINISH	PAINTED BLACK PER CUSTOMER REQUIREMENTS. SEE NOTE

DESIGN CRITERIA:

1. DESIGNED IN ACCORDANCE WITH 2001 AASHTO "STANDARD SPECIFICATIONS FOR STRUCTURAL SUPPORTS FOR HIGHWAY SIGNS, LUMINAIRES, AND TRAFFIC SIGNALS" FOR 100 M.P.H. WIND ZONE.
2. ANCHOR BOLTS ANALYZED FOR STEEL STRENGTH ONLY. THE ANCHOR BOLT EMBEDMENT LENGTH SHOWN ON THIS DRAWING SHALL BE VERIFIED BY THE FOUNDATION ENGINEER.
3. THE EXPOSED LENGTH OF THE ANCHOR BOLT BETWEEN THE TOP OF THE FOUNDATION AND THE BOTTOM OF THE LEVELING NUT SHOULD NOT EXCEED ONE BOLT DIAMETER.
4. CUSTOMER TO CONFIRM ALL DIMENSIONS & ORIENTATIONS BEFORE RELEASING ORDER FOR MANUFACTURING.

FINISH NOTE:

1. ALL COMPONENTS OF THE POLE, ARM, SPLIT BASE, EYE-BOLTS, RECEPTACLE COVER ETC. SHALL BE PAINTED TENEMIC BLACK PER CITY OF LAFAYETTE PAINT SPECIFICATIONS PER ATTACHED SP27-17



STATE: LAFAYETTE, CALIFORNIA	REQ# / SO# : NCA43814	R1	ADD PAINT NOTE, ABOUT DATA & RECEPTACLE	8/28/13	MB	MB
PROJECT NAME: EAST END PED/BIKE & STREETSCAPE IMPROVEMENTS PROJECT		REV	DESCRIPTION	DATE	REV BY	CHK BY
ORNAMENTAL ROADWAY LIGHTING AND BANNER STANDARD DESIGN NUMBER: B99-742-B563-Y1						
	This document and the contents herein are proprietary and the property of Union Metal Corporation. This document is not to be copied, reproduced, or used for any reason except for the purposes which it was issued without the express written consent of Union Metal Corporation. Furthermore Union Metal Corporation reserves the right to recall this document and all copies at any time for any reason.	DESIGNED BY	CHECKED BY	DATE	SCALE	ENG REF
		MB	MB	4/9/12		N99-742-B563

APPENDIX G

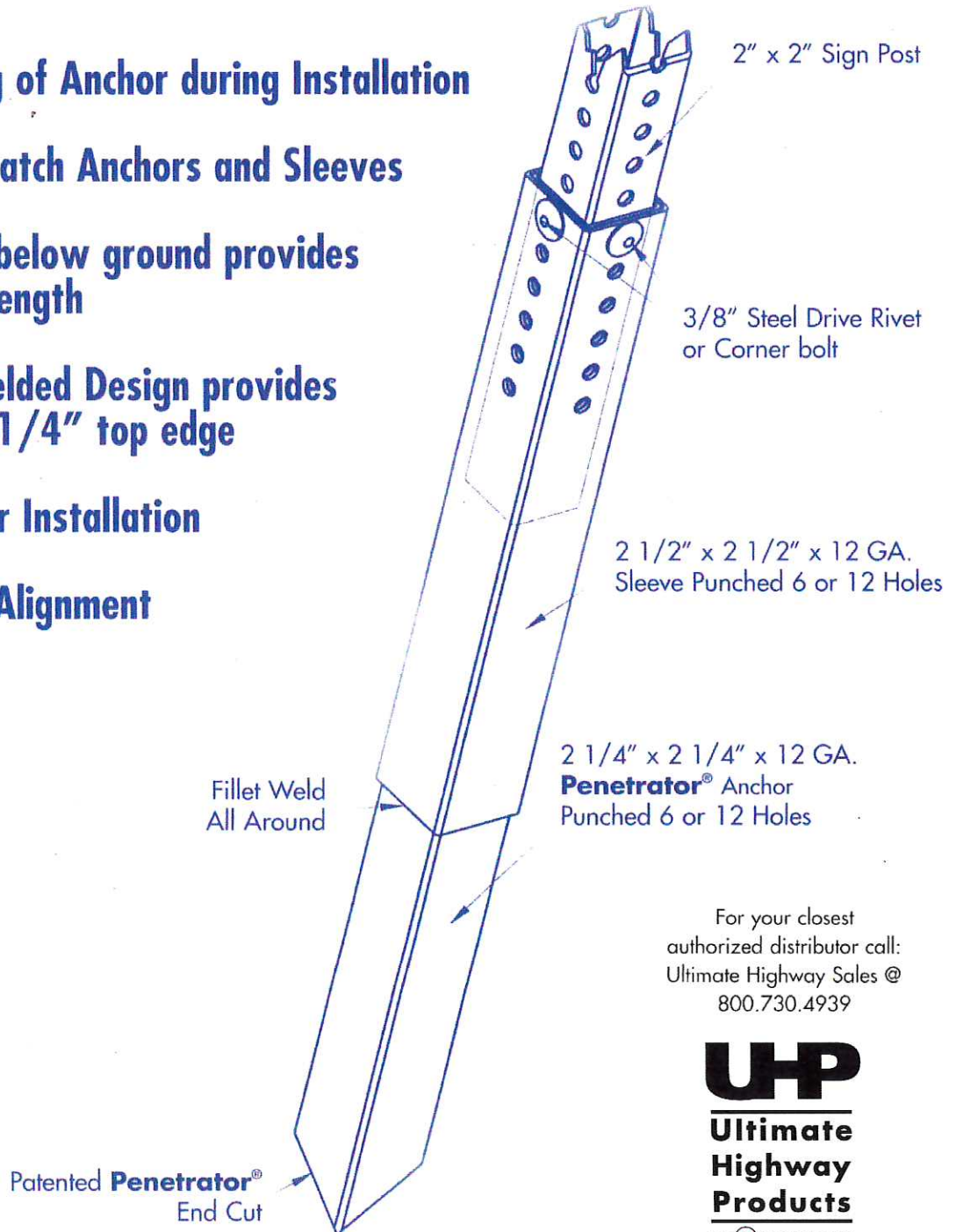
SIGN POST & ACCESSORIES

The Anchor-Mate®

The Best Drivable Anchor in the World!

by **Uti-Mate®**
The Ultimate Sign Support System

- No Deforming of Anchor during Installation
- No need to match Anchors and Sleeves
- Solid section below ground provides additional strength
- Two Piece Welded Design provides almost a full 1/4" top edge
- Quicker Easier Installation
- Perfect Hole Alignment



For your closest authorized distributor call:
Ultimate Highway Sales @
800.730.4939

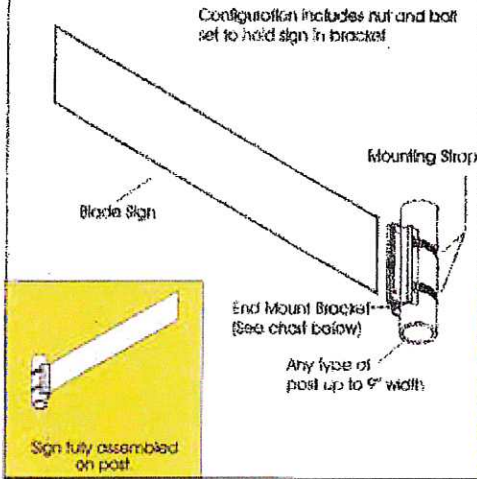
UP
Ultimate Highway Products
PRIMUS company

www.primus-group.com
ncalvi@comcast.net

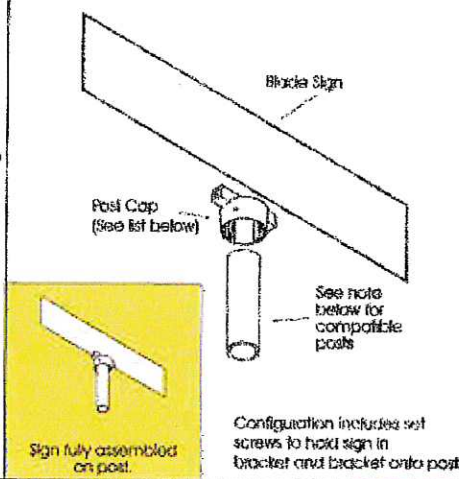
STREET SIGNS

MOUNTING COMPONENTS FOR BLADE SIGNS (EXTRUDED & FLAT)

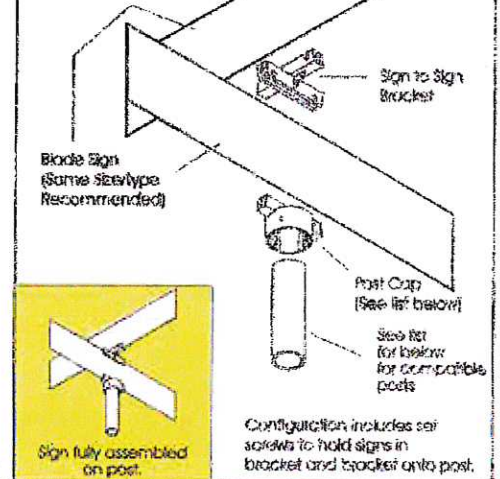
Configuration: End Mounted



Configuration: Single Top of Pole



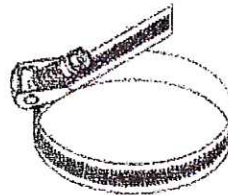
Configuration: Four-Way Top of Pole



END MOUNT BRACKET

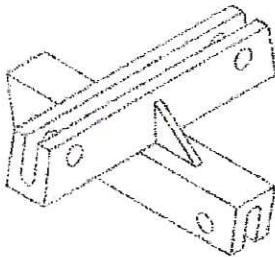
Blade street signs can be held on their ends with this bracket.

EMB-6 for AX-6 or AF-6 signs
EMB-6.75 for AX-6.75 or AF-6.75 signs
EMB-9 for AX-9 or AF-9 signs



MOUNTING STRAP

Stainless Steel Strap/Clamp - inexpensive and convenient for mounting sign brackets and other uses. With a length of 32 inches, the clamp can accommodate poles up to 9 inches wide.





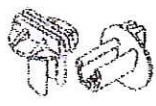
SIGN TO SIGN BRACKET

Bracket allows two blade signs to be stacked on top of one another.

707XCS for AX-6 or AX-6.75 signs
808XCS for AX-9 signs
606FCS for AF-6 or AF-6.75 signs
808FCS for AF-9 signs

POST CAPS AND POST INFORMATION

Post caps are recommended for "Single Top of Pole" or "Four-Way Top of Pole" configurations of blade street signs. Western Highway supplies post caps for the most common street sign posts. Use the following chart to see if your posts are compatible with our regularly available post caps.

 Cylindrical Post Cap	Fits 2" ID Diameter Post 707X-2 for AX-6 or AX-6.75 808X-2 for AX-9 signs 606F-2 for AF-6 or AF-6.75 signs 808F-2 for AF-9 signs	Fits 2-1/2" ID Diameter Post 707X-2.5 for AX-6 or AX-6.75 808X-2.5 for AX-9 signs 606F-2.5 for AF-6 or AF-6.75 signs 808F-2.5 for AF-9 signs
 Square Post Cap	Fits Square Tube Post 850X for AX-6, AX-6.75 or AX-9 signs 850F for AF-6, AF-6.75 or AF-9 signs	Other post caps are available. Please call us to confirm inventory.
 U-Channel Post Cap	Fits U-Channel Post 707XU for AX-6 or AX-6.75 signs 808XU for AX-9 signs 606FU for AF-6 or AF-6.75 signs 808FU for AF-9 signs	



www.westernhighway.com





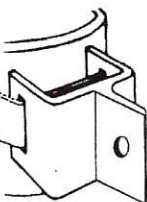
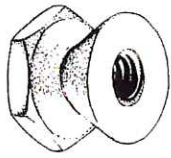
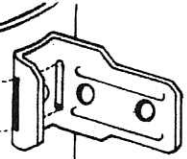


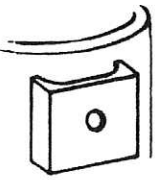
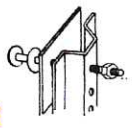

WESTERN HIGHWAY PRODUCTS

10650 FERN AVENUE • STANTON, CA 90680 • FAX 714 952-2118

CALL 714 761-4811 OR 800 479-3783

(WITHIN CALIFORNIA)

SIGN MOUNTING HARDWARE

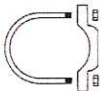
	<p>H1-SL STRAP-ON BRACKET (Straight Leg) Extra Heavy 1/8" Steel, Hot dipped galv. with 5/16" tapped hole. Slotted for 3/4" Strap. Mounting Bolt not included.</p> <p>H1-SLSS STAINLESS STEEL BRACKET Includes Mounting Bolt.</p>	 <p>H6-STB SEAL-TITE BOLT 5/16" X 1/2" bolt with Neoprene washer for mounting Signs with tapped brackets or pipe.</p>
	<p>H2-FL STRAP-ON BRACKET (Flared Leg) For banding to large poles. Extra Heavy 1/8" Steel, Hot dipped galv. with 5/16" tapped hole. Slotted for 3/4" Strap.</p> <p>H2-FLSS STAINLESS STEEL BRACKET Includes Mounting Bolt.</p>	 <p>H6-TPBKEY KEY WRENCH For tamper proof bolt.</p> <p>H6-TPDR RACKET DRIVER For tamper proof bolt.</p> <p>H6-TP TAMPER PROOF BOLT 5/16" X 1/2" special spanner head bolt. Use same as H6-STB bolt.</p>
	<p>H3-CLB STRAP-ON BRACKET CANTILEVER Heavy Gauge Aluminum Use one for each sign hole. For mounting double face Signs - slotted for 3/4" strap and punched for 5/16" bolts.</p>	 <p>H6-VGNG For Galv. Bolt H6-VGNP For Plated Bolt VANDLGARD-NUT Tamper Proof Nut for Sign Mounting Call Western Highway for information on this unique, easily installed nut that cuts sign losses.</p>
	<p>H4-D-007 STRAP-ON L-MOUNT BRKT. Stainless Steel Double holes for mounting long signs. May be used back to back in pairs for extra rigid cantilever mounting. Slotted for 3/4" Strap.</p>	 <p>H6-2.5 BG 2 1/2" - Galv. H6-2.5 BP 2 1/2" - Plated BUTTON THEFT PROOF BOLT When this button head bolt is used with nut H6-VGN above, theft is almost impossible. 5/16" Diameter. Available in both galvanized and plated.</p>  <p>ADAPTOR WASHER CARRIAGE BOLT</p> <p>H6-4.5 CB 4 1/2" Plated Carriage Bolt includes adaptor washer. Washer can be sold as separate item.</p>
	<p>H5 BOLT-ON SPACER Galv. Channel Iron 1 1/2" x 1 1/2" x 1/8" Provides flat mounting surface when bolting sign to any size pipe to prevent wobble.</p>	 <p>H6-23 SIGN MTG. HDWR. For U Channel Posts. Aluminum spacer 3 1/2" x 2 1/2", 5/16" x 2 1/2" Bolt, Washer and Nut.</p>  <p>H6-24 GUIDE PLATE MTG. HDWR. 1/4 X 1/2" Bolt, Washer and Lock Nut (6 sets reqd. per Guide Marker).</p>

SIGN MOUNTING HARDWARE



HWSSC

STAINLESS STEEL-CLAMP
Inexpensive and convenient for mounting sign brackets and other uses. 32" long fits 2" to 9" diameter pipe pole.



H9-2

H9-2.5

CLAMP ON U-BRACKETS

(Single Bracket)
Includes steel zinc coated U bolt with nuts and cast aluminum bracket. Sign fastening bolt not included.
(Use H6-STB or H6-TP)
Fits 2" and 2 1/2" I.D. standard pipe, eliminates strapping or drilling holes.



H14-C130

3/4" STRAPPING TAPE
.015 Stainless Steel
200 Ft. Roll.

H14-C163

3/4" STRAPPING TAPE
.020 Stainless Steel
200 Ft. Roll.



H14-C156

VALUE CLIP
100 per Box.



H10-1

(3/16 x 1 x 36")
SIGN BRACE (Galv.)

To fit 4 x 4 posts.

H10-2

(3/16 x 1 x 37 1/4")
To fit 4 x 6 posts.

H10-4.5HG

HEX HEAD BRACE BOLT

5/16" x 4 1/2" Includes nut & washer.

H10-6.5HG

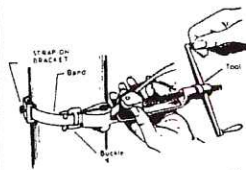
HEX HEAD BRACE BOLT

5/16" x 6 1/2" Includes nut & washer.

H10-8.5HG

HEX HEAD BRACE BOLT

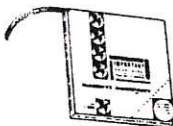
5/16" x 8 1/2" Includes nut & washer.



H18-C001

BANDING TOOL

For use with any size Banding or Strapping Tape.



H11-C203

3/8"

H11-C204

1/2"

H11-C205

5/8"

H11-C206

3/4"

HEAVY DUTY

BANDING TAPE

.030 Stainless Steel 100 Ft. Roll.



H19-HP2

HAND PLIER RIVETING TOOL

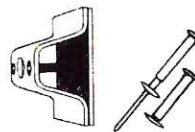
For self-setting rivets. Complete with 4 size Heads - 3/32, 1/8, 5/32, 3/16.



H20-AB66A

3/16" SELF-SETTING RIVETS

For fastening C.M. Refl. Buttons with Hand Plier. 100 per Box.



H20-18

1/4" x 7/8" POP RIVET

100 per Box.

H20-26

CHERRY-MATE FASTENER

1/4" X 1 3/8" POP RIVETS

A convenient way to mount signs on the H21-SP sign posts. 100 per Box.



H16-C253

3/8"

H16-C254

1/2"

H16-C255

5/8"

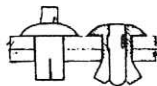
H16-C256

3/4"

HEAVY DUTY

BUCKLES

Stainless Steel 100 per Box.



H20-316

3/16" x 9/16"

DRIVE RIVETS




For fastening C.M. Refl. Buttons with Hammer.

H20-38

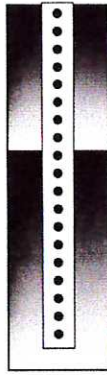
3/8" x 1/2"

For sign mounting. 100 per box.

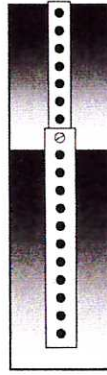
SIGN POST

 <p>H21-DP DELINEATOR POSTS HOT DIPPED GALVANIZED OR BAKED ENAMEL GREEN 5 ft. 6 ft. 1.12 #/ft 30 - 3/8" holes on 1" centers. Light weight but strong. Ideal for Delineators, or marking utility lines.</p>	 <p>H21-GP 5 ft., 6 ft. GUIDE POSTS (FOR MTG. TARGET PLATES)</p> <p>H21-GP 40 Inch (for mtg. Type "K" Plates) California Spec. Flanges slotted ends pointed.</p>	<p>PIPE POST</p>  <p>H21-RP2-12 H21-RP2.5-12 H21-RP2 H21-RP2.5 GALVANIZED STEEL PIPE POSTS Schedule 40 steel pipe 2 inch and 2 1/2 inch I.D. 10 1/2 ft. and 12 ft. long. IN STOCK</p>	<p>"U" CHANNEL POSTS HOT DIPPED GALVANIZED OR BAKED ENAMEL GREEN</p> <p>H21-SP SIGN POSTS</p> <table border="0"> <tr><td>6 ft.</td><td>7 ft.</td></tr> <tr><td>8 ft.</td><td>9 ft.</td></tr> <tr><td>10 ft.</td><td>11 ft.</td></tr> <tr><td>12 ft.</td><td></td></tr> </table> <p>2 lb. per foot</p> <p><small>(Other lengths on special order) Hot rolled, high carbon, rail steel. 3/8" holes punched on 1" centers, full length. Bottom pointed. High carbon steel is recommended because it resist bending. Meets & exceeds California State specifications.</small></p>	6 ft.	7 ft.	8 ft.	9 ft.	10 ft.	11 ft.	12 ft.	
6 ft.	7 ft.										
8 ft.	9 ft.										
10 ft.	11 ft.										
12 ft.											

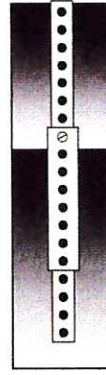
Ulti-Mate® The Ultimate Sign Support System



DIRECT INSTALLATION
The Ulti-mate sign post can be installed directly into the ground using power equipment or a sledgehammer with drive cap.



EZ INSTALLATION
The Ulti-mate 12 gage anchor system allows crews to work at ground level for fast installations and replacements. The Ulti-mate anchor is installed directly into the ground, leaving 1 or 2 holes above grade level. The Ulti-mate sign post slides into the anchor for safe and easy installations.

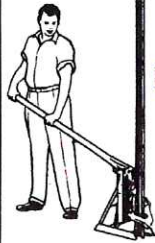


HI-IMPACT INSTALLATION
The Ulti-mate double 12 gage system is for areas that require frequent replacements due to damaged sign posts. This unique method utilizes a two-piece breakaway anchor that makes replacement work fast and safe.

English				Metric		
Tube Size	Wall Thickness		Pounds	Tube Size	Wall Thickness	Kilograms
	Gage	Inches	Per Foot		(mm)	Per Meter
1.75 x 1.75	14	0.083	1.71	44.45 x 44.45	2.10	2.54
2.00 x 2.00	14	0.083	1.99	50.80 x 50.80	2.10	2.96
2.25 x 2.25	14	0.083	2.28	57.15 x 57.15	2.10	3.39
1.50 x 1.50	12	0.105	1.74	38.10 x 38.10	2.66	2.59
1.75 x 1.75	12	0.105	2.09	44.45 x 44.45	2.66	3.11
2.00 x 2.00	12	0.105	2.44	50.80 x 50.80	2.66	3.63
2.25 x 2.25	12	0.105	2.79	57.15 x 57.15	2.66	4.16
2.50 x 2.50	12	0.105	3.14	63.50 x 63.50	2.66	4.69

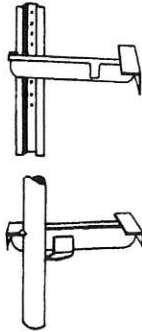
See Separate Literature

SIGN POST ACCESSORIES



H25-4A
DETACHABLE
POST PULLER ONLY
(any shape post)
Must be used with Jack.

H25-7
POST PULLER JACK
ONLY
Includes Base & Handle.



H25-6
Self Locking
U-Post Step

H25-6A
Self Locking
2" Pipe Step



H25-8
POST DRIVER
For Driving U Channel
Sign Posts.
38 lb.



H26-SP
1 1/2" x 48 PIPE ONLY
Painted Black

Use H5 Spacer and H6-2.5
Bolts for mounting signs to
above.



H26-20B
20 lb. Base Only

H26-30B
30 lb. Base Only

H26-40B
40 lb. Base Only

5/16" flat steel plate
base. Painted black.



ULTI-MATE STOP

TO BE USED FOR
TEMPORARY TRAFFIC
CONTROL SITUATIONS.

See separate literature for
complete information.



H21-SPDC
MANUAL DRIVE CAP
For U-Channel.

H21-SPPDC
POWER DRIVE CAP
& 7/8" SHANK
For U-Channel.



UM-MDC175
MANUAL DRIVE CAP
For 1 3/4" anchor posts.

UM-MDC200
MANUAL DRIVE CAP
For 2" anchor posts.

UM-MDC225
MANUAL DRIVE CAP
For 2 1/4" anchor posts.

UM-MDC250
MANUAL DRIVE CAP
For 2 1/2" anchor posts.

UM-PDCS7/8-325

POWER DRIVE SHANK
7/8" x 3 1/4"

UM-PDCS7/8-425
POWER DRIVE SHANK
7/8" x 4 1/4"

UM-PDCS1-425
POWER DRIVE SHANK
1" x 4 1/4"

UM-PDCS11/8-6
POWER DRIVE SHANK
1 1/8" x 6"

UM-PDCS11/4-6
POWER DRIVE SHANK
1 1/4" x 6"



UM-PDC175
POWER DRIVE CAP
For 1 3/4" anchor posts.

UM-PDC200
POWER DRIVE CAP
For 2" anchor posts.

UM-PDC225
POWER DRIVE CAP
For 2 1/4" anchor posts.

UM-PDC250
POWER DRIVE CAP
For 2 1/2" anchor posts.



**STREET NAME
SIGN
HARDWARE**

WE MANUFACTURE A COMPLETE LINE OF STREET
NAME SIGN MOUNTING HARDWARE. LOOK FOR IT
IN THE STREET NAME SIGN SECTION OF YOUR
WESTERN HIGHWAY PRODUCTS CATALOG.

10650 FERN AVENUE, STANTON, CALIFORNIA 90680
(714) 761-4811 (800) 479-3783 FAX (714) 952-2118
<http://www.westernhighway.com> E-mail whpsales@westernhighway.com

APPENDIX H

PROJECT IDENTIFICATION/FUNDING SIGN



CONTRA COSTA
transportation
authority



Your MEASURE J Tax Dollars At Work

Start Date: _____

End Date: _____

Contractor Name & Phone No.

EAST END PED/BIKE & STREETScape IMPROVEMENTS

4' x 4'