

APPENDICES

- APPENDIX A - WASTE MANAGEMENT PLAN &
WASTE ASSESSMENT FORM
- APPENDIX B - UTILITY POT HOLE LOG
- APPENDIX C - STATE STANDARD PLANS
- APPENDIX D - CONTRA COSTA COUNTY STANDARD
PLANS
- APPENDIX E - VALVE BOX
- APPENDIX F - STREET LIGHT POLE & LUMINAIRE
ASSEMBLY
- APPENDIX G - SIGN POST & ACCESSORIES
- APPENDIX H - PROJECT IDENTIFICATION/FUNDING
SIGN

APPENDIX A

**WASTE MANAGEMENT PLAN
AND
WASTE ASSESSMENT FORM**

WASTE ASSESSMENT FORM

(To be filled out and submitted to the Engineer before commencing demolition work)

The table below lists debris materials that are routinely generated during construction or demolition. Identify the materials that you estimate will be recycled, salvaged, or landfilled from your project site and the handling procedure, hauler and/or destination of each material type.

Material Type	Identify Materials (☑)			Handling Procedure, Hauler, or Final Destination of Material
	Recycle	Salvage	Landfill	
Asphalt				
Brick				
Concrete				
Dirt/Clean Fill				
Masonry				
Metals (steel, brass, aluminum, copper, etc.)				
Rock/Stone				
Vegetative Debris				
Wood/Lumber				
Other:				
Garbage	[Hatched Area]			

Please sign and date attesting that the above information is true and correct to the best of your knowledge, that you acknowledge that 40% of your contract retention may be forfeited to the City for failure to meet the 50 percent diversion requirement, and that you are responsible for the actions of your subcontractors or other agents with regard to the diversion requirement.

CONTRACTOR NAME: _____

SIGNATURE: _____

DATE: _____

WASTE ASSESSMENT SUMMARY REPORT FORM
 (To be filled out upon project completion)

Complete the table below by indicating what was actually done with all the C&D materials from the project and the quantities (by weight) that were recycled, salvaged, or landfilled. All C&D materials must be accounted for whether or not they were recycled or taken to the landfill. Attach receipts and weight tags from all recyclers and landfill locations identifying, 1) date, 2) project number, 3) material type, 4) if materials were recycled, salvaged, or landfilled, and 5) weight of load(s).

Material Type	Identify Materials (lb)			Handling Procedure, Hauler, or Final Destination of Material
	Recycle	Salvage	Landfill	
Asphalt				
Brick				
Concrete				
Dirt/Clean Fill				
Masonry				
Metals (steel, brass, aluminum, copper, etc.)				
Rock/Stone				
Vegetative Debris				
Wood/Lumber				
Other:				
Garbage	[Hatched Area]			

Please sign and date attesting that the above information is true and correct to the best of your knowledge, that you acknowledge that 40% of your contract retention may be forfeited to the City for failure to meet the 50 percent diversion requirement.

CONTRACTOR NAME: _____

SIGNATURE: _____

DATE: _____

RECEIPT FOR MATERIALS RECYCLED

(To be filled out by receiver only if facility does not issue an itemized receipt)

Company or Individual Receiving Material: *(Business stamp is acceptable)*

Company:			
Address:			
City:			
Zip:			
Phone:			
Facility/Individual Type: <i>(Circle one)</i> Recycler Salvager End User			
Facility Attendant Signature: <i>(Required)</i>			

Construction/Demolition Company: *(Business stamp is acceptable)*

Company:	
Address:	
City:	
Zip:	
Phone:	Contact:

Materials Received:

Material Type	Amount <i>(specify in cubic yards, lbs, or tons)</i>	Cost <i>(or payment if applicable to service)</i>	Intended Use of Material Received <i>(circle one)</i>	Date Received or Picked Up
			Recycle Reuse Salvage Landfill	
			Recycle Reuse Salvage Landfill	
			Recycle Reuse Salvage Landfill	
			Recycle Reuse Salvage Landfill	

APPENDIX B

UTILITY POTHOLE LOG

Utility Pothole Log

(To be filled out and submitted to the Engineer prior to commencing excavation work)

The Contractor shall notify Underground Service Alert (800-227-2600) prior to potholing for utilities. The Contractor shall positively locate all utilities (laterals and mains) marked by utility representatives or identified by the Engineer.

Address	Approx. Station	Offset From Existing Improvement or Centerline	Utility Owner and Type	Depth
<i>2685 Sample Street</i>	<i>10+53</i>	<i>2' from North Gutter Lip, in Street</i>	<i>PG&E (Gas Service)</i>	<i>36"</i>

*Depth measured from existing surface
 Please sign and date attesting that the above information is true and correct to the best of your knowledge.

Contractor Name: _____

Signature of Contractors Representative: _____

Date: _____

Signature of City of Lafayette Representative: _____

Date: _____

APPENDIX C

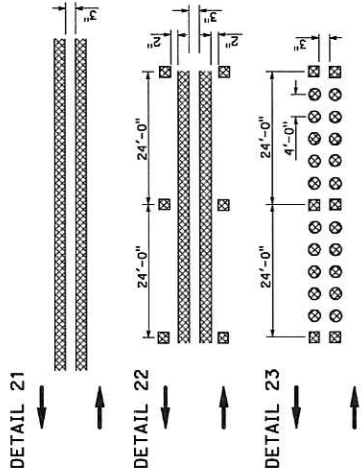
STATE STANDARD PLANS

0141 COUNTY ROUTE TOTAL PROJECT SHEET TOTAL SHEETS

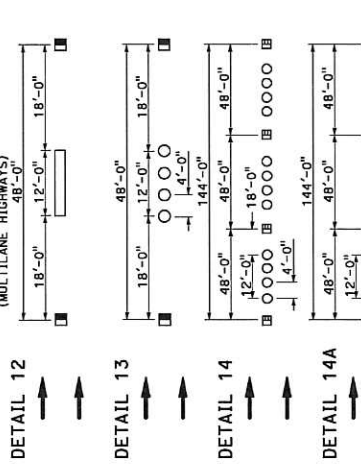
REGISTERED CIVIL ENGINEER
 May 20, 2011
 THE STATE OF CALIFORNIA OR ITS OFFICERS OR AGENTS SHALL NOT BE RESPONSIBLE FOR THE ACCURACY OR COMPLETENESS OF ANY COPIES OF THIS PLAN SHEET.

PROFESSIONAL ENGINEER
 Roberto A. Alarcon, Inc.
 No. 3-31-13
 CIVIL

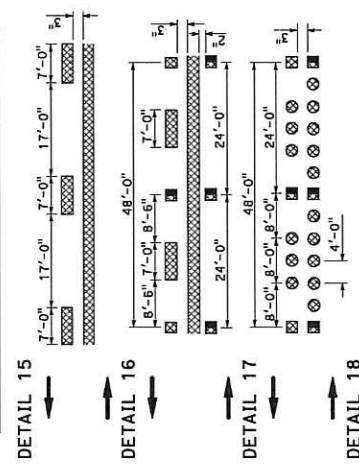
NO PASSING ZONES-TWO DIRECTION



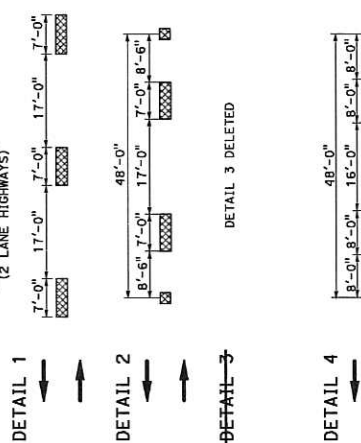
LANELINES (Cont)
 (MULTILANE HIGHWAYS)



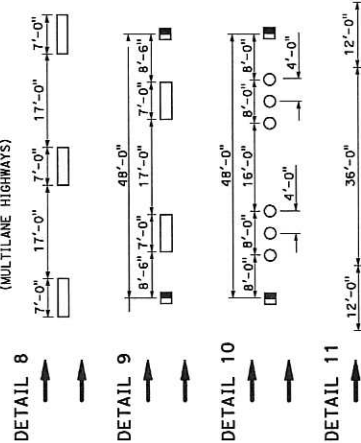
NO PASSING ZONES-ONE DIRECTION



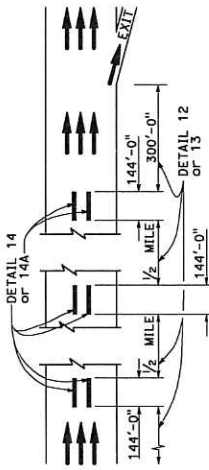
CENTERLINES
 (2 LANE HIGHWAYS)



LANELINES
 (MULTILANE HIGHWAYS)



TYPICAL LANE LINE DELINEATION IN ADVANCE OF EXIT RAMP



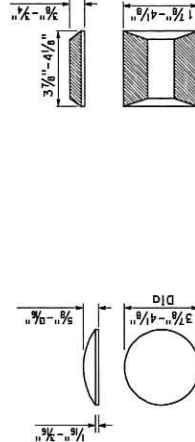
LEGEND

- MARKERS**
- TYPE A WHITE NON-REFLECTIVE
 - ⊙ TYPE AY YELLOW NON-REFLECTIVE
 - TYPE C RED-CLEAR RETROREFLECTIVE
 - ⊠ TYPE D TWO-WAY YELLOW RETROREFLECTIVE
 - ▣ TYPE G ONE-WAY CLEAR RETROREFLECTIVE
 - ▤ TYPE H ONE-WAY YELLOW RETROREFLECTIVE
- LINES**
- 4" WHITE
 - - - 4" YELLOW
- DIRECTION OF TRAVEL

NOTE:

Detail 14 is to be used in combination with Detail 13. Detail 14A is to be used in combination with Detail 12.

MARKER DETAILS



TYPE A AND TYPE AY

TYPE C AND TYPE D

TYPE G AND TYPE H



PAVEMENT MARKERS AND TRAFFIC LINES TYPICAL DETAILS

STATE OF CALIFORNIA
 DEPARTMENT OF TRANSPORTATION

NO SCALE

A20A

PROJECT NO. _____ SHEET NO. _____
 COUNTY _____ ROUTE _____ TOTAL PROJECT _____
 REGISTERED CIVIL ENGINEER
 MAY 20, 2011
 THE STATE OF CALIFORNIA OR ITS OFFICERS
 OR AGENTS SHALL NOT BE RESPONSIBLE FOR
 ANY ERRORS OR OMISSIONS ON THIS PLAN SHEET.
 COPIES OF THIS PLAN SHEET: _____

LEGEND
MARKERS
 TYPE AY YELLOW NON-REFLECTIVE
 TYPE D TWO-WAY YELLOW RETROREFLECTIVE
 TYPE H ONE-WAY YELLOW RETROREFLECTIVE

LINES
 4" WHITE
 4" YELLOW
 DIRECTION OF TRAVEL

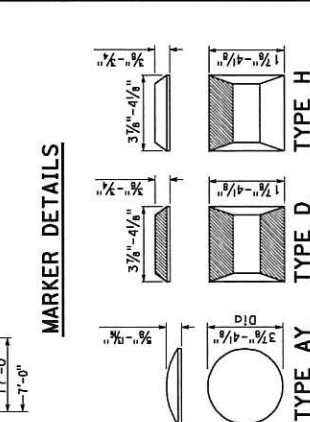
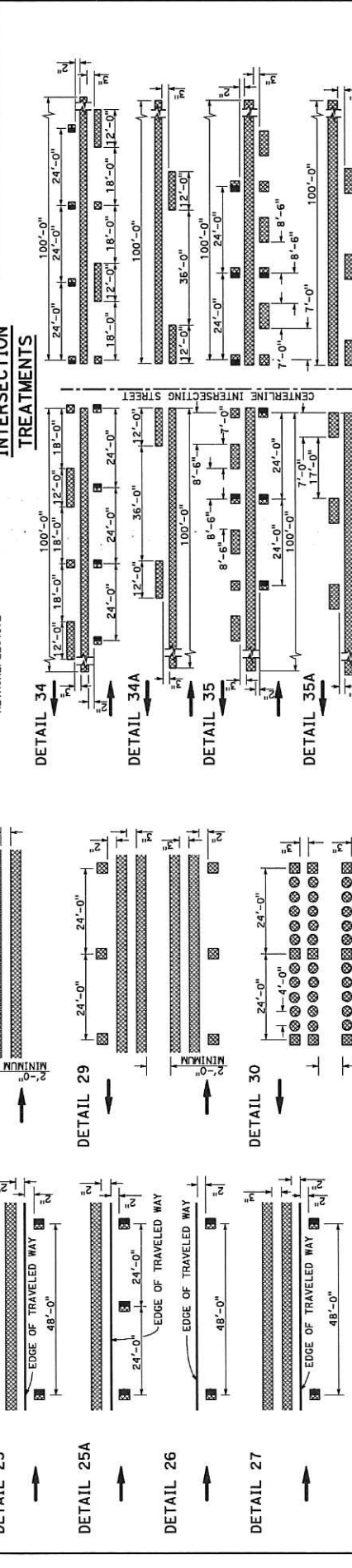
MEDIAN ISLANDS
 DETAIL 28
 DETAIL 29
 DETAIL 30
 DETAIL 31

LEFT EDGELINES
 (DIVIDED HIGHWAYS)
 DETAIL 24
 DETAIL 25
 DETAIL 25A
 DETAIL 26
 DETAIL 27

RIGHT EDGELINES
 DETAIL 27A DELETED
 DETAIL 27B
 DETAIL 27C

INTERSECTION TREATMENTS
 DETAIL 34
 DETAIL 34A
 DETAIL 35
 DETAIL 35A

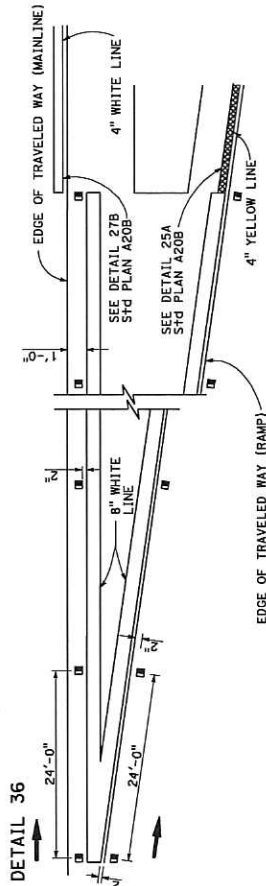
RIGHT EDGELINE EXTENSION THROUGH INTERSECTIONS
 DETAIL 27C



STATE OF CALIFORNIA
 DEPARTMENT OF TRANSPORTATION
PAVEMENT MARKERS AND TRAFFIC LINES TYPICAL DETAILS
 NO SCALE
A20B

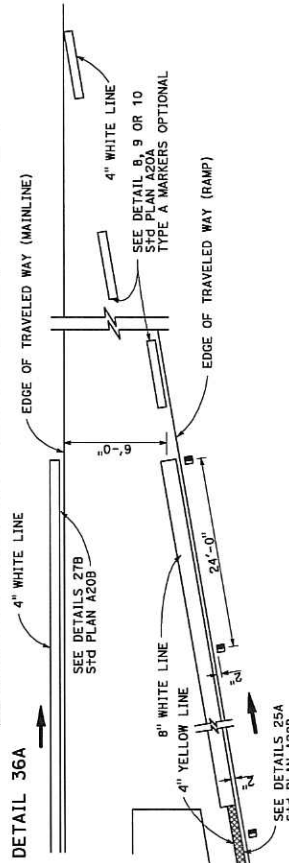
PROJECT SHEET NO. 11-11-11
 COUNTY ROUTE TOTAL SHEETS 11-11-11
 REGISTERED CIVIL ENGINEER
 MAY 20, 2011
 THE STATE OF CALIFORNIA AND ITS OFFICERS
 OR AGENTS SHALL NOT BE RESPONSIBLE FOR
 THE ACCURACY OR COMPLETENESS OF ANY
 COPIES OF THIS PLAN SHEET.

EXIT RAMP NEUTRAL AREA (GORE) TREATMENT



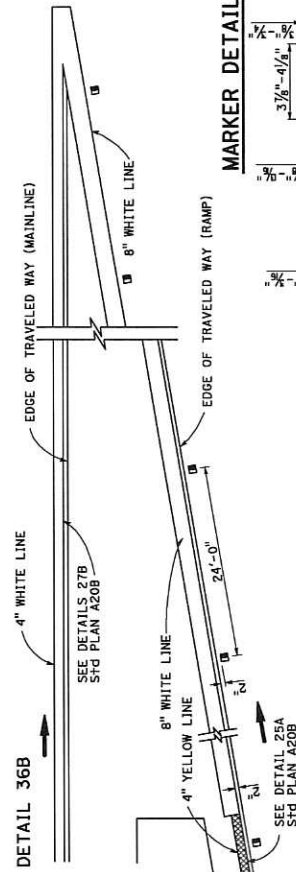
DETAIL 36

ENTRANCE RAMP NEUTRAL AREA (MERGE) TREATMENT



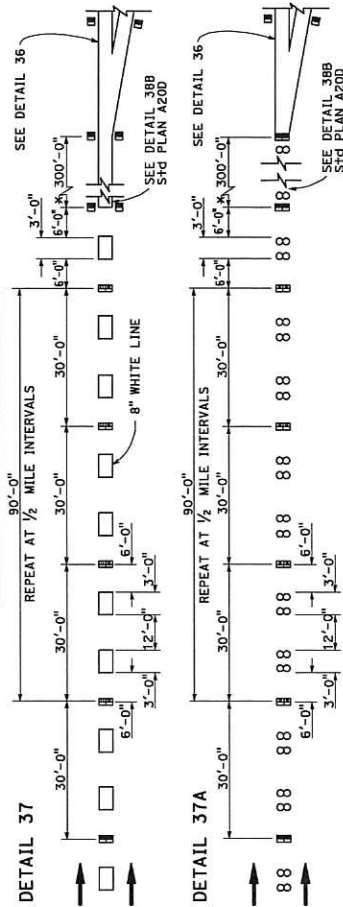
DETAIL 36A

ENTRANCE RAMP NEUTRAL AREA (ACCELERATION LANE) TREATMENT



DETAIL 36B

LANE DROP AT EXIT RAMP



DETAIL 37

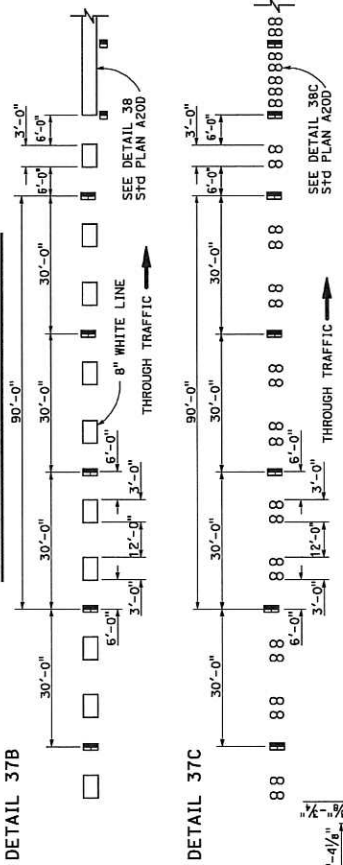
DETAIL 37A

DETAIL 37B

DETAIL 37C

* The solid channelizing line shown may be omitted on short auxiliary lanes where weaving length is critical.

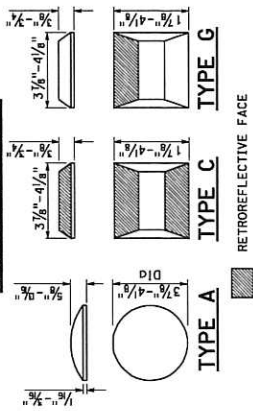
LANE DROP AT INTERSECTIONS



DETAIL 37B

DETAIL 37C

MARKER DETAILS



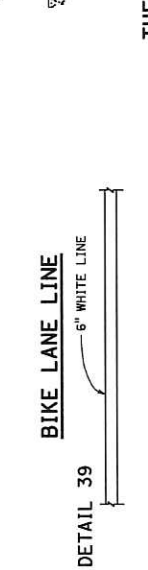
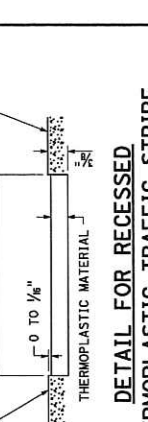
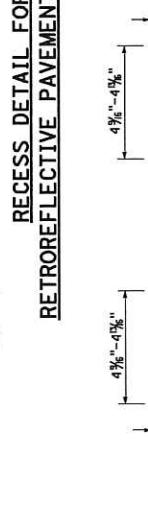
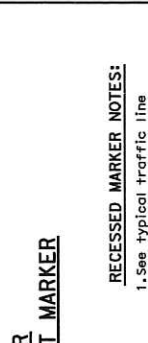
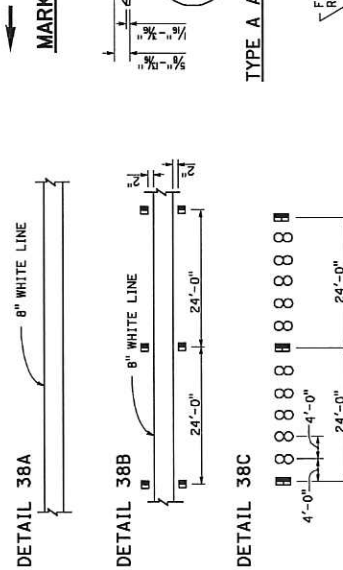
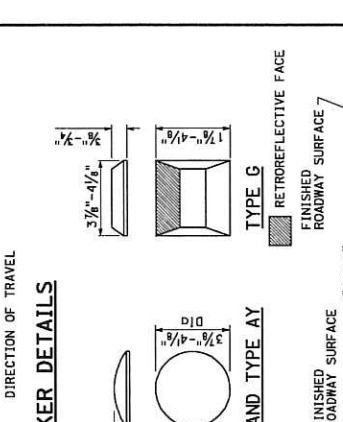
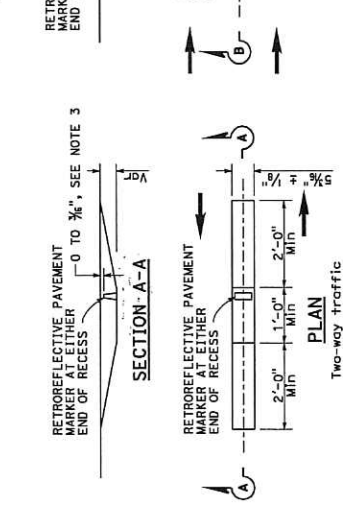
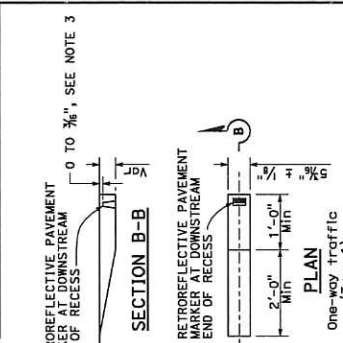
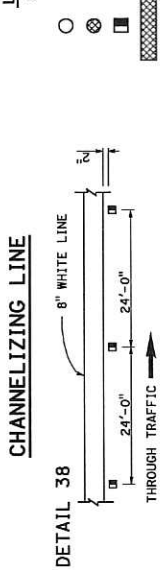
- LEGEND**
 MARKERS
 ○ TYPE A WHITE NON-REFLECTIVE
 □ TYPE C RED-CLEAR RETROREFLECTIVE
 □ TYPE G ONE-WAY CLEAR RETROREFLECTIVE
 ← DIRECTION OF TRAVEL

STATE OF CALIFORNIA
 DEPARTMENT OF TRANSPORTATION
**PAVEMENT MARKERS
 AND TRAFFIC LINE
 TYPICAL DETAILS**

NO SCALE

A20C

Dist. COUNTY ROUTE	POST-MILES TOTAL PROJECT	SHEET TOTAL SHEETS
REGISTERED CIVIL ENGINEER MAY 20, 2011 PLANS APPROVAL DATE THE ENGINEER SHALL NOT BE RESPONSIBLE FOR THE CORRECTNESS OF THIS PLAN SHEET.		

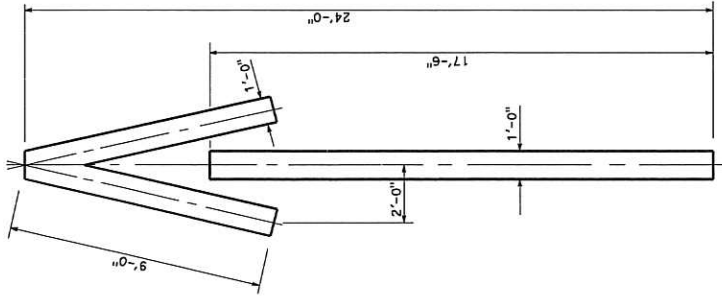


STATE OF CALIFORNIA
 DEPARTMENT OF TRANSPORTATION
**PAVEMENT MARKERS
 AND TRAFFIC LINES
 TYPICAL DETAILS**
 NO SCALE
A20D

Return to Table of Contents

DIST#	COUNTY	ROUTE	POST MILES	SHEET TOTAL
			TOTAL PROJECT	NO. SHEETS

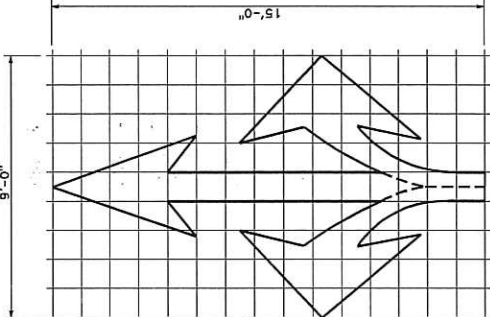
REGISTERED CIVIL ENGINEER
Robert L. McLaughlin
 No. C00315
 State of California
 May 20, 2011
 DATE
 THE STATE OF CALIFORNIA AND ITS OFFICERS
 OR AGENTS SHALL NOT BE RESPONSIBLE FOR
 COPIES OF THIS PLAN SHEET.



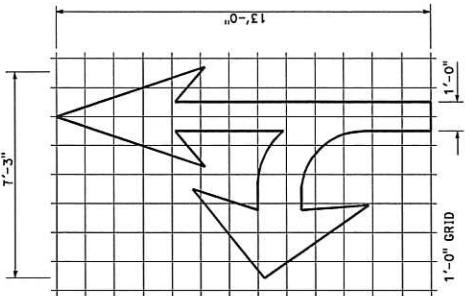
A=33 ft²
TYPE I ARROW

STATE OF CALIFORNIA
 DEPARTMENT OF TRANSPORTATION
PAVEMENT MARKINGS
ARROWS
 NO SCALE

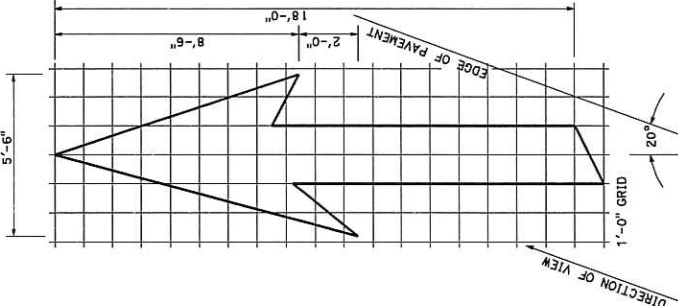
A24A



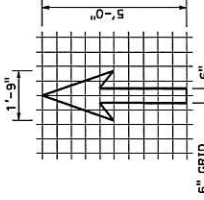
A=36 ft²
TYPE VIII ARROW



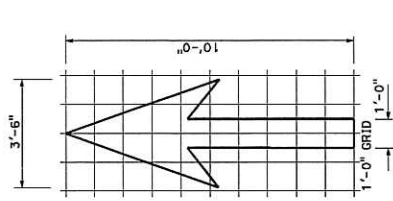
A=27 ft²
TYPE VII (L) ARROW
 (For Type VIII (R) arrow, use mirror image)



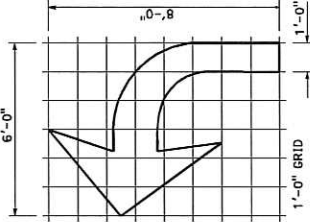
A=42 ft²
TYPE VI ARROW
 Right lane drop arrow
 (For left lane, use mirror image)



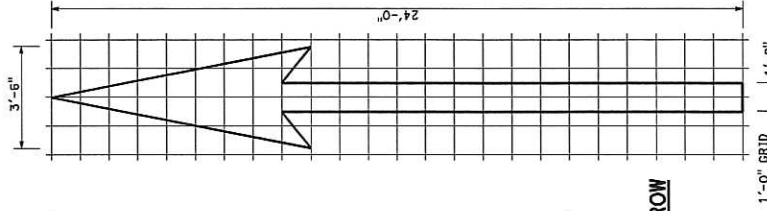
A=7 ft²
BIKE LANE ARROW



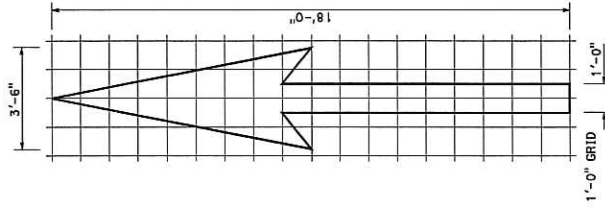
A=14 ft²
TYPE I 10'-0" ARROW



A=15 ft²
TYPE IV (L) ARROW
 (For Type IV (R) arrow, use mirror image)



A=31 ft²
TYPE I 24'-0" ARROW



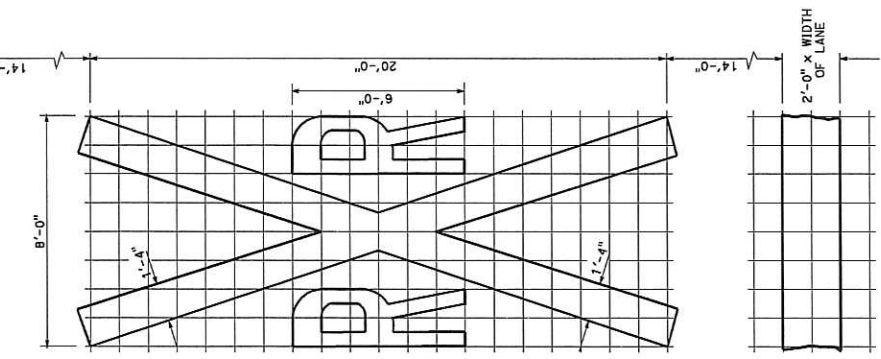
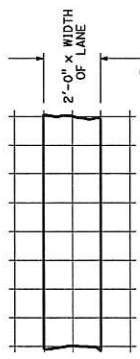
A=25 ft²
TYPE I 18'-0" ARROW

NOTE:
 Minor variations in dimensions may be accepted by the Engineer.

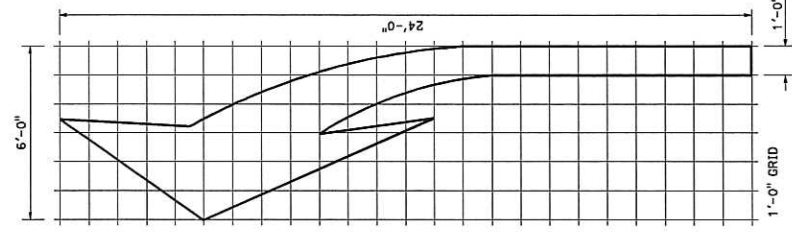
PROJECT TOTAL SHEET NO.	PROJECT TOTAL SHEET NO.
ROUTE	REGISTERED CIVIL ENGINEER
COUNTY	REGISTERED CIVIL ENGINEER
DATE	REGISTERED CIVIL ENGINEER

REGISTERED CIVIL ENGINEER
 Roberto L. McLaughlin
 No. 3-31-13
 Exp. 3-31-15
 STATE OF CALIFORNIA
 REGISTERED CIVIL ENGINEER

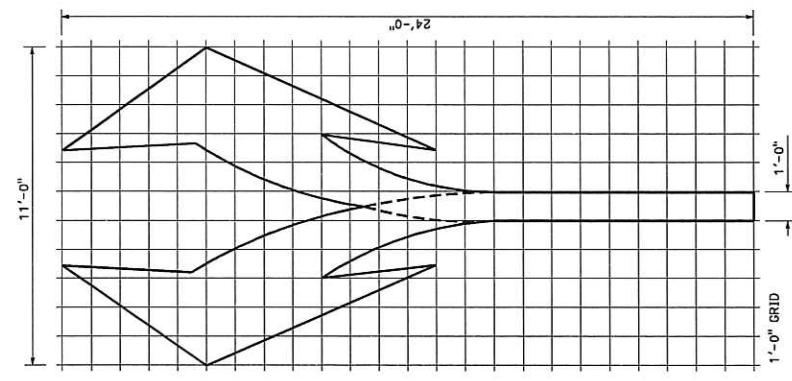
MAY 20, 2011
 PLANS APPROVAL DATE
 THE STATE OF CALIFORNIA OR ITS OFFICERS
 OR AGENTS SHALL NOT BE RESPONSIBLE FOR
 THE ACCURACY OR COMPLETENESS OF THE
 COPIES OF THIS PLAN SHEET.



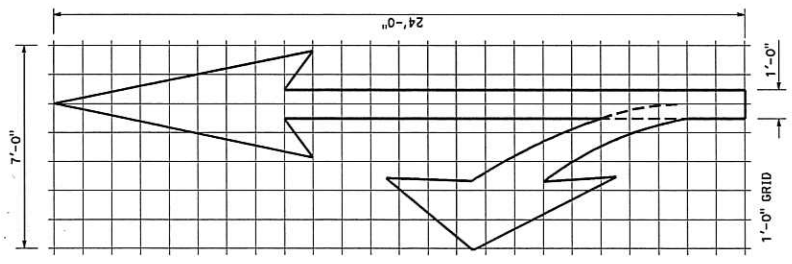
RAILROAD CROSSING SYMBOL
 1'-0" GRID
 A=70 f+2 *
 * 70 f+2 does not include the 2'-0" x variable width transverse lines.



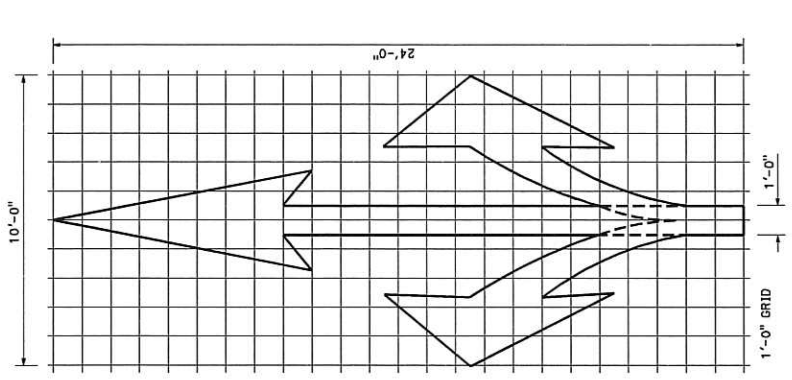
TYPE III (L) ARROW
 A=42 f+2
 (For Type III (R) use mirror image)



TYPE III (B) ARROW
 A=73 f+2



TYPE II (L) ARROW
 A=45 f+2
 (For Type II (R) use mirror image)



TYPE II (B) ARROW
 A=59 f+2

STATE OF CALIFORNIA
 DEPARTMENT OF TRANSPORTATION
**PAVEMENT MARKINGS
 ARROWS AND SYMBOLS**
 NO SCALE

A24B

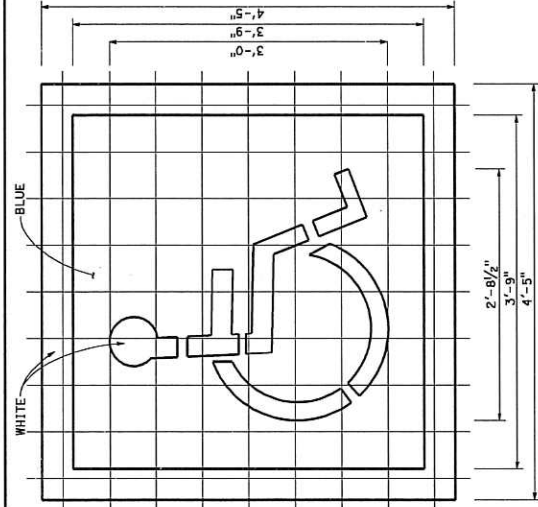
DATE	COUNTY	ROUTE	TOTAL SHEETS	SHEET NO.	TOTAL SHEETS

REGISTERED CIVIL ENGINEER

Robert A. McLaughlin
No. 3-31-13
City of California
State of California

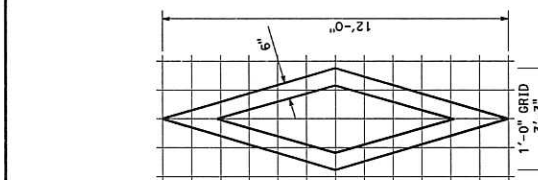
MAY 20, 2011
DATE

THE STATE OF CALIFORNIA OR ITS OFFICERS OR AGENTS SHALL NOT BE RESPONSIBLE FOR ANY ERRORS OR OMISSIONS OR FOR THE CONSEQUENCES OF THE USE OF THIS PLAN SHEET.



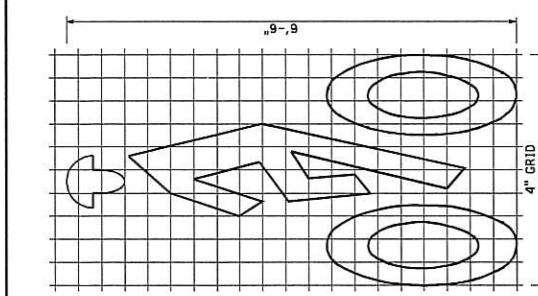
INTERNATIONAL SYMBOL OF ACCESSIBILITY (ISA) MARKING

6" GRID
A (WHITE) = 9 ft±
A (BLUE) = 14 ft±



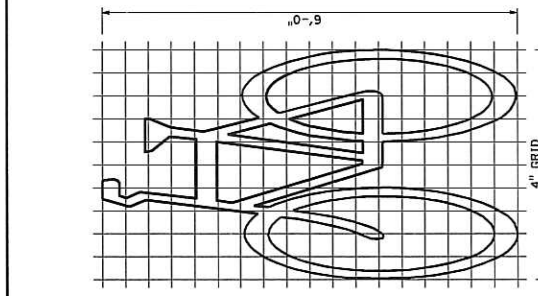
DIAMOND SYMBOL

1'-0" GRID
3'-3"
A=11 ft±



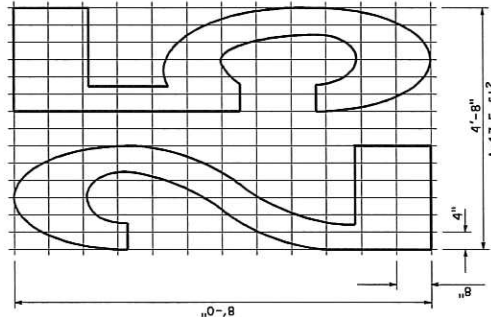
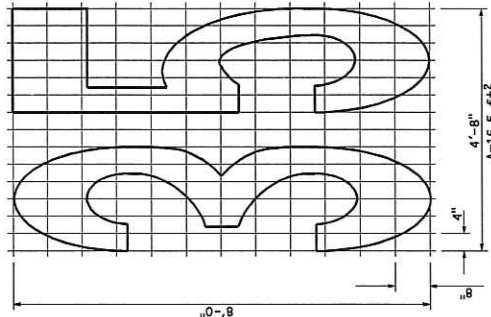
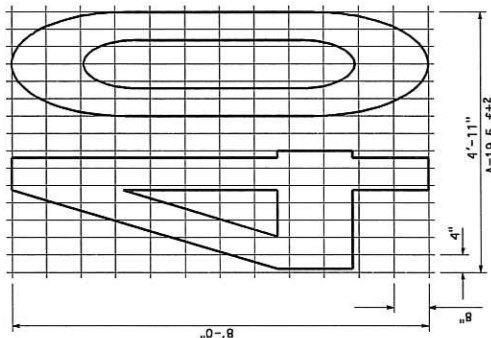
BIKE LANE SYMBOL WITH PERSON

4" GRID
3'-4"
A=7 ft±

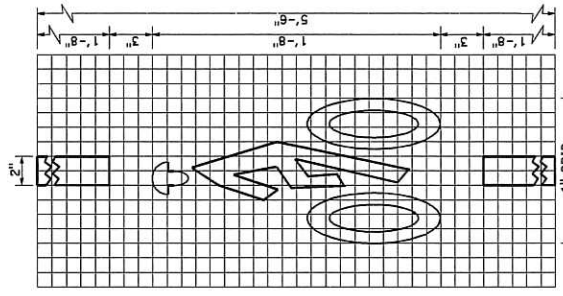


BIKE LANE SYMBOL WITHOUT PERSON

4" GRID
3'-4"
A=7 ft±



NUMERALS



BIKE LOOP DETECTOR SYMBOL

1" GRID
2"
10"
A=2 ft±

NOTE:
Minor variations in dimensions may be accepted by the Engineer.

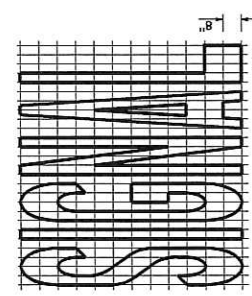
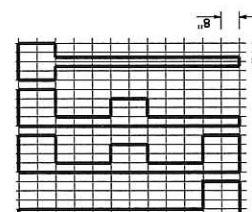
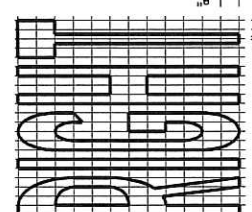
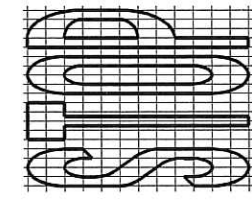
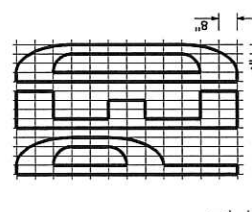
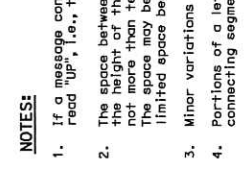
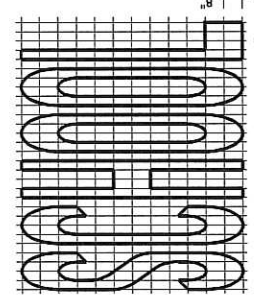
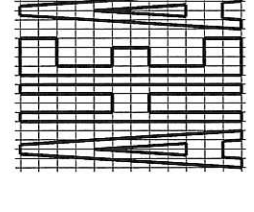
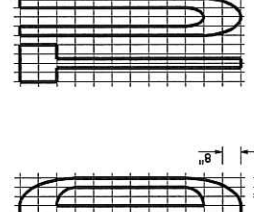
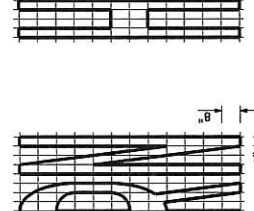
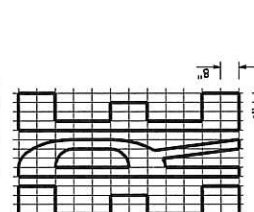
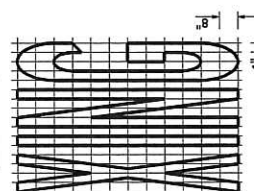
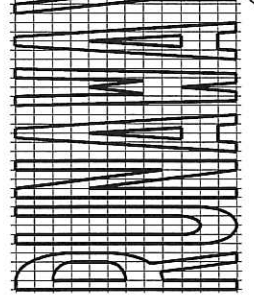
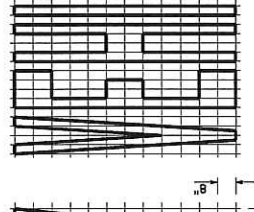
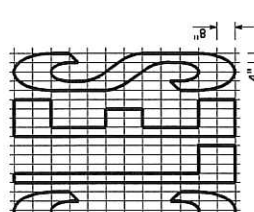
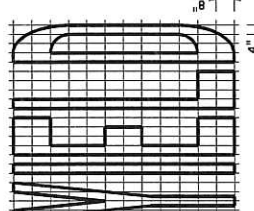
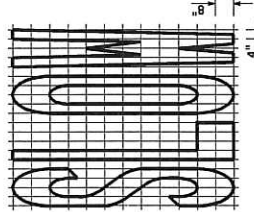
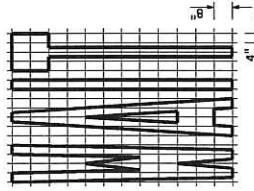
STATE OF CALIFORNIA
DEPARTMENT OF TRANSPORTATION

**PAVEMENT MARKINGS
SYMBOLS AND NUMERALS**

NO SCALE

A24C

COUNTY _____ ROUTE _____ SHEET TOTAL SHEETS _____
 REGISTERED CIVIL ENGINEER
 May 20, 2011 DATE
 THE STATE OF CALIFORNIA OR ITS OFFICERS
 OR AGENTS SHALL NOT BE RESPONSIBLE FOR
 THE ACCURACY OR COMPLETENESS OF SCANNED
 COPIES OF THIS PLAN SHEET.



WORD MARKINGS

ITEM	f+t2	ITEM	f+t2	ITEM	f+t2
XING	21	YIELD	24	BIKE	5
AHEAD	31	SCHOOL	35	SLOW	23
WAIT	19	SIGNAL	32	STOP	22
LANE	6	TURN	24	LEFT	19
RIGHT	26	HERE	26	VEHICLES	42

STATE OF CALIFORNIA
 DEPARTMENT OF TRANSPORTATION
PAVEMENT MARKINGS
WORDS
 NO SCALE

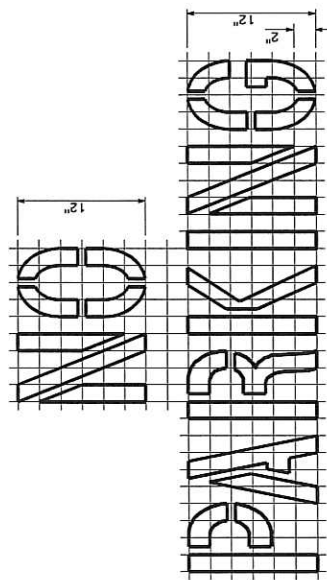
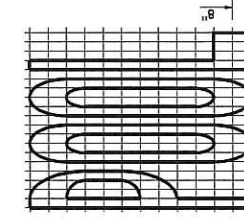
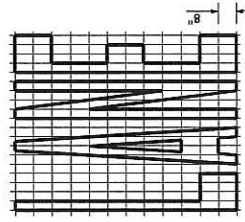
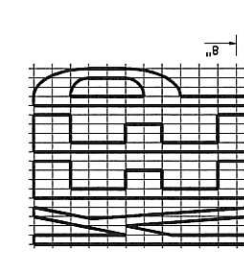
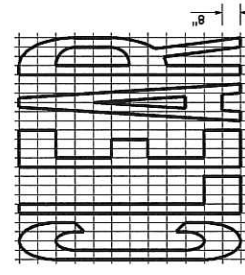
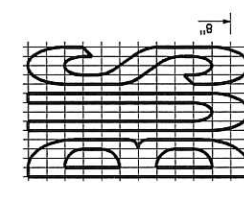
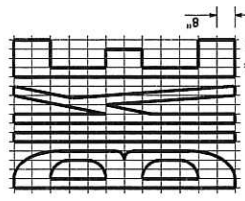
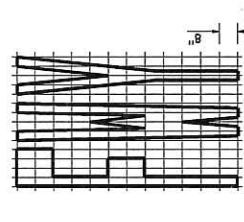
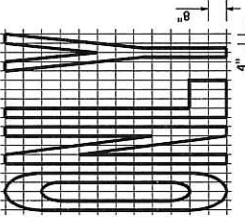
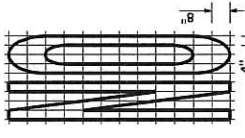
A24D

DISTRICT	COUNTY	ROUTE	TOTAL SHEETS	SHEET NO.	TOTAL SHEETS

REGISTERED CIVIL ENGINEER
Robert M. McCall
 No. 3-31-13
 EXPIRES 3-31-14
 REGISTERED PROFESSIONAL ENGINEER
 STATE OF CALIFORNIA

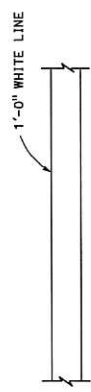
DESIGNED BY: **Robert M. McCall**
 DATE: May 20, 2011
 THIS PLAN IS APPROVED FOR ITS PURPOSES
 AND THE ENGINEER SHALL BE RESPONSIBLE FOR
 ANY CHANGES MADE IN THE FIELD OR
 COPIES OF THIS PLAN SHEET.

ITEM	FT+2	ITEM	FT+2
LANE	24	NO	14
POOL	23	BIRE	21
CAR	17	BUS	20
CLEAR	27	ONLY	22
KEEP	24	FWY	16



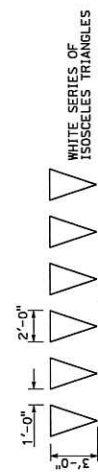
NOTES:

1. If a message consists of more than one word, it should read "up", i.e., the first word should be nearest the driver.
2. The space between words should be at least four times the height of the characters. The space between ten times the height of the character. The space may be reduced appropriately where there is limited space because of local conditions.
3. Minor variations in dimensions may be accepted by the Engineer.
4. Portions of a letter, number or symbol may be separated by connecting segments not to exceed 2" in width.
5. Crosswalks contiguous to school grounds are to be 1'-0" yellow lines in place of 1'-0" white shown.
6. The words "NO PARKING" pavement marking is to be used for parking facilities. For typical locations of markings, see Standard Plans A90A and A90B.
7. The words "NO PARKING", shall be painted in white letters no less than 1'-0" high on a contrasting background and located so that it is visible to traffic enforcement officials.



CROSSWALK AND LIMIT LINE

See Note 5



WHITE SERIES OF ISOSCELES TRIANGLES

DIRECTION OF TRAVEL

YIELD LINE

A=2 ft+2
See Notes 6 and 7

STATE OF CALIFORNIA
DEPARTMENT OF TRANSPORTATION

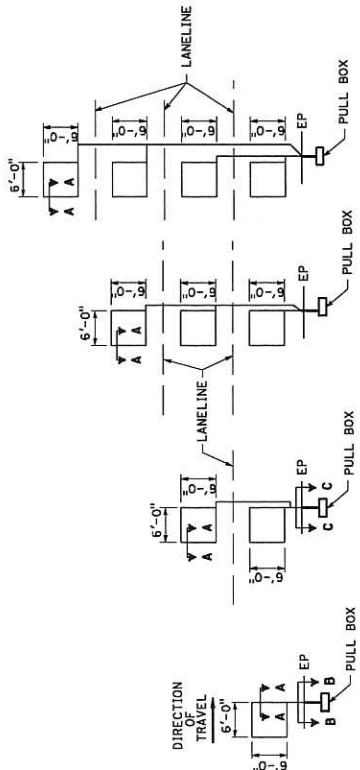
**PAVEMENT MARKINGS
WORDS AND CROSSWALKS**

NO SCALE

A24E

DATE	COUNTY	ROUTE	TOTAL SHEETS	SHEET NO.	TOTAL SHEETS

REGISTERED ELECTRICAL ENGINEER
 MAY 20, 2011
 THE STATE OF CALIFORNIA
 DEPARTMENT OF INDUSTRIAL RELATIONS
 DIVISION OF INDUSTRIAL SAFETY
 THIS STATE OF CALIFORNIA LICENSE IS VALID FOR THE PRACTICE OF ELECTRICAL ENGINEERING ONLY.
 THE STATE OF CALIFORNIA SHALL NOT BE RESPONSIBLE FOR ANY ERRORS OR OMISSIONS ON THIS PLAN SHEET.
 REGISTERED PROFESSIONAL ENGINEER
 MICHAEL S. MOORE
 No. E14812
 Exp. 03-31-12
 STATE OF CALIFORNIA

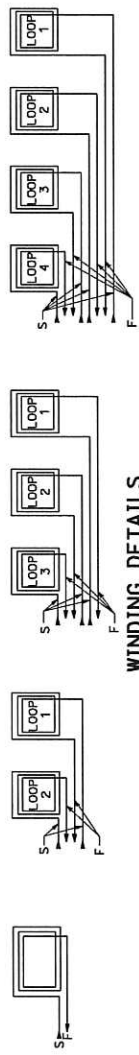


SAWCUT DETAILS

- Type A loop detector configurations illustrated
- 1A thru 4A = 1 Type A loop configuration in each lane.
 - 1B thru 4B = 1 Type B loop configuration in each lane.
 - 1C = 1 Type C loop configuration entering lanes as required.
 - 1D thru 4D = 1 Type D loop configuration in each lane.
 - 1E thru 4E = 1 Type E loop configuration in each lane.
 - 1F thru 4F = 1 Type F loop configuration in each lane.
- Use Type A, B, C, D, E or F loop detector configurations only when specified or shown on plans.

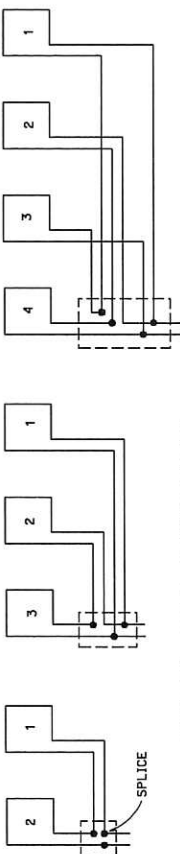
LOOP INSTALLATION PROCEDURE

1. Loops shall be centered in lanes.
2. Saw slots in pavement for loop conductors as shown in details.
3. Distance between side of loop and a lead-in saw cut from adjacent detectors shall be 2'-0" minimum. Distance between lead-in saw cuts shall be 5" minimum.
4. Bottom of saw slot shall be smooth with no sharp edges.
5. Slots shall be washed until clean, blown out and thoroughly dried before installing loop conductors.
6. Adjacent loops on the same sensor unit channel shall be wound in opposite directions.
7. Identify and tag loop circuit wires in the pull box with loop number, start (S) and finish (F) of conductor. Identify and tag lead-in-cable with sensor number and phase.
8. Install loop conductor in slot using a 3/8" to 1/2" thick wood paddle. Loop conductors shall be installed in one sawed slot during sealant placement.
9. No more than 2 twisted pairs shall be installed in one sawed slot.
10. Allow additional 5'-0" of slack length of conductor for the lead-in run to pull box.
11. The additional length of each conductor for each loop shall be twisted together into a pair of 1/2 turns per foot (minimum) before being placed in the slot and conduit leading to the pull box.
12. Test each loop circuit for continuity, circuit resistance and insulation resistance at the pull box before filling slots.
13. Fill slots as shown in details.
14. Splice loop conductors to lead-in-cable. Splices shall be soldered.
15. End of lead-in-cable and Type 2 loop conductor shall be waterproofed prior to installing in conduit to prevent moisture from entering the cable.
16. Lead-in-cable shall not be spliced between the pull box and the controller cabinet terminals.
17. Test each loop circuit for continuity, circuit resistance and insulation resistance at the controller cabinet location.
18. Where loop conductors are not to be spliced to a lead-in-cable, the conductors shall be taped and waterproofed with electrical insulating coating.



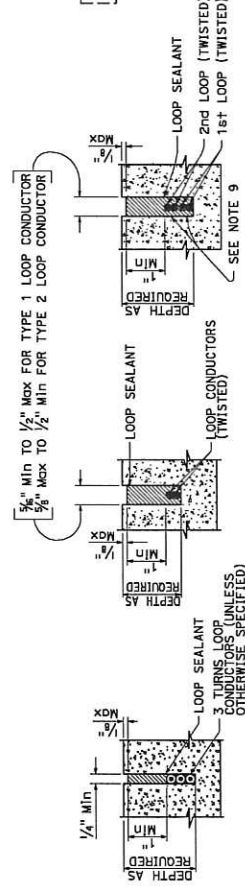
WINDING DETAILS

See Notes 6 and 7



TYPICAL LOOP CONNECTIONS

Dashed lines represent the pull box



SECTION A-A

SECTION B-B

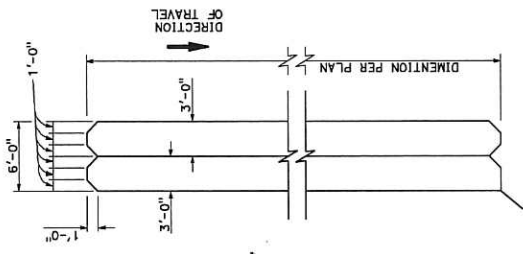
SECTION C-C

SLOT DETAILS - TYPE 1 AND TYPE 2 LOOP CONDUCTOR

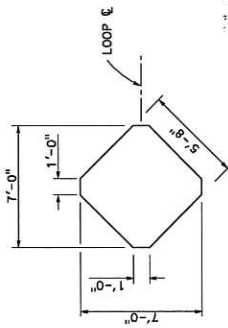
STATE OF CALIFORNIA
 DEPARTMENT OF TRANSPORTATION
**ELECTRICAL SYSTEMS
 (DETECTORS)**
 NO SCALE

ES-5A

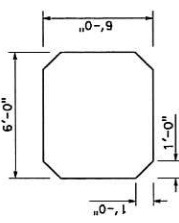
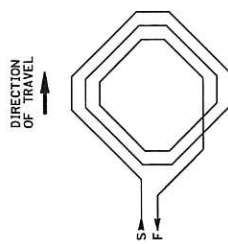
DIS+ COUNTY	ROUTE	TOTAL SHEETS	SHEET NO.
REGISTERED ELECTRICAL ENGINEER <i>William R. Overea</i> MAY 20, 2011 THE STATE OF CALIFORNIA OR ITS OFFICERS OR AGENTS SHALL NOT BE RESPONSIBLE FOR THE ACCURACY OR COMPLETENESS OF THE DATA OR THE RESULTS THEREOF OR FOR ANY ERRORS OR OMISSIONS OF THIS PLAN SHEET.		NO. PROJECT	NO. SHEETS



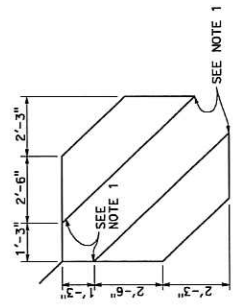
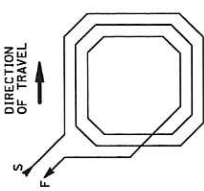
SAWCUT DETAIL
TYPE C LOOP DETECTOR CONFIGURATION



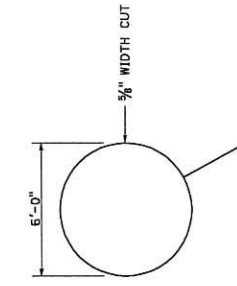
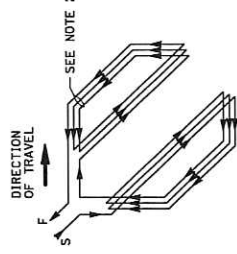
SAWCUT DETAIL
TYPE B LOOP DETECTOR CONFIGURATION



SAWCUT DETAIL
TYPE A LOOP DETECTOR CONFIGURATION



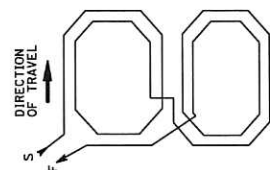
SAWCUT DETAIL
TYPE D LOOP DETECTOR CONFIGURATION



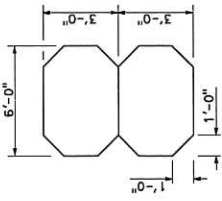
SAWCUT DETAIL
TYPE E LOOP DETECTOR CONFIGURATION

WINDING DETAIL

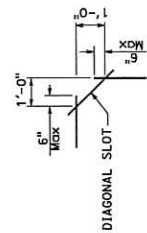
WINDING DETAIL
TYPE C LOOP DETECTOR CONFIGURATION



WINDING DETAIL
TYPE Q LOOP DETECTOR CONFIGURATION



SAWCUT DETAIL
TYPE Q LOOP DETECTOR CONFIGURATION



PLAN VIEW OF
DIAGONAL SLOT
AT CORNERS

- NOTES:**
1. Round corners of acute angle sawcuts to prevent damage to conductors.
 2. Install 3 turns when only one Type D loop is on a sensor unit channel. Install 5 turns when one Type D loop is connected with 3 additional 6'-0" x 6'-0" loops on a sensor unit.
 3. Typical distance separating loops from edge to edge is 10' for Type A, B and E installation in single lane.

STATE OF CALIFORNIA
DEPARTMENT OF TRANSPORTATION
**ELECTRICAL SYSTEMS
(DETECTORS)**

NO SCALE

ES-5B

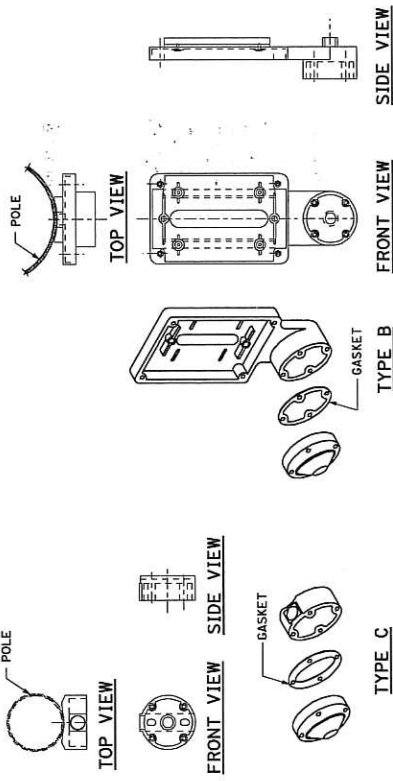
DATE	COUNTY	ROUTE	TOTAL PROJECT SHEETS	SHEET NO.
				ES-5C

REGISTERED ELECTRICAL ENGINEER
William J. Overpeck
 No. E-15612
 STATE OF CALIFORNIA
 PROFESSIONAL ENGINEER
 LICENSED IN ELECTRICAL ENGINEERING
 EXPIRES 12/31/12

PLANS APPROVAL DATE
 MAY 20, 2011
 THE STATE OF CALIFORNIA OR ITS OFFICERS
 OR AGENTS SHALL NOT BE RESPONSIBLE FOR
 THE ACCURACY OR COMPLETENESS OF ANY
 COPIES OF THIS PLAN SHEET.

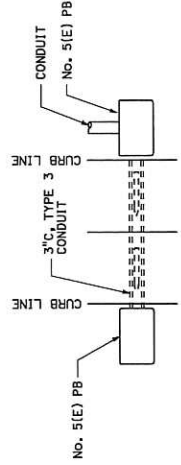
NOTES:

- Back casting shape to fit curvature of post.
- Provide cover fitting for top of post, when PPB is mounted on pedestrian push button post.
- Insetal push button on crosswalk side of standard.
- Actuator shall be 2" minimum, in diameter.
- Pedestrian push button sign:
 - Color of legend and arrow are black.
 - Color of background and symbol are white.
- Bicycle push button sign:
 - Use only when specified.
 - Black legend on white background.

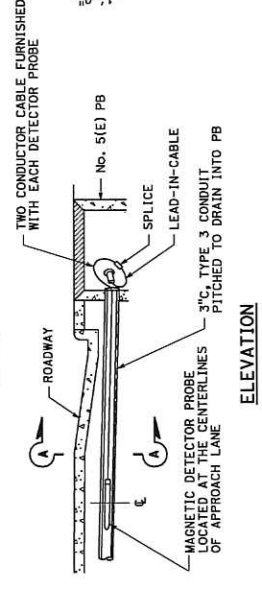


PEDESTRIAN PUSH BUTTONS

DETAIL C

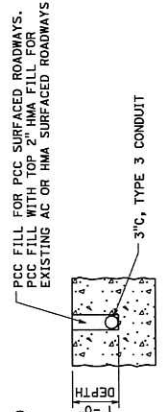


PLAN

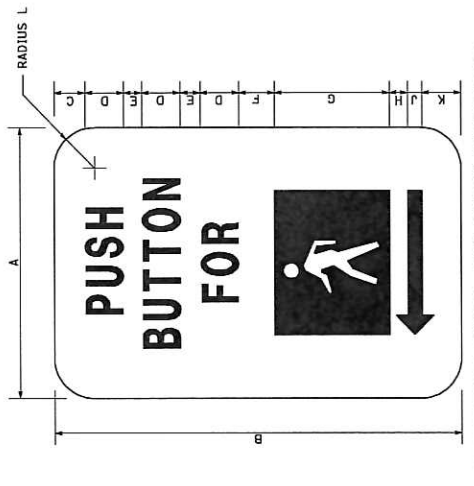


ELEVATION

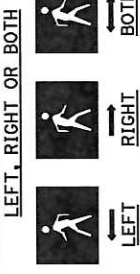
**MAGNETIC VEHICLE DETECTOR
INSTALLATION DETAILS
DETAIL D**



SECTION A-A



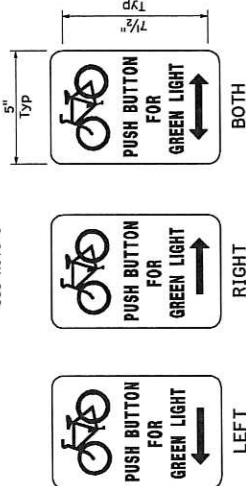
ALTERNATIVE SYMBOL AND ARROW DIRECTIONS:



SIGN DIMENSIONS											
	A	B	C	D	E	F	G	H	J	K	L
NOMINAL	5"	7 1/2"	3/4"	3/4"	3/8"	7/8"	2 1/8"	3/8"	1/4"	3/4"	3/4"

PEDESTRIAN PUSH BUTTON SIGNS

DETAIL A
See Note 5



BICYCLE PUSH BUTTON SIGNS

DETAIL B
See Note 6

STATE OF CALIFORNIA
DEPARTMENT OF TRANSPORTATION

**ELECTRICAL SYSTEMS
(DETECTOR, PEDESTRIAN PUSH BUTTON AND SIGNS)**

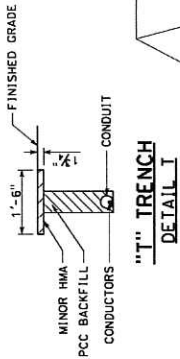
NO SCALE

ES-5C

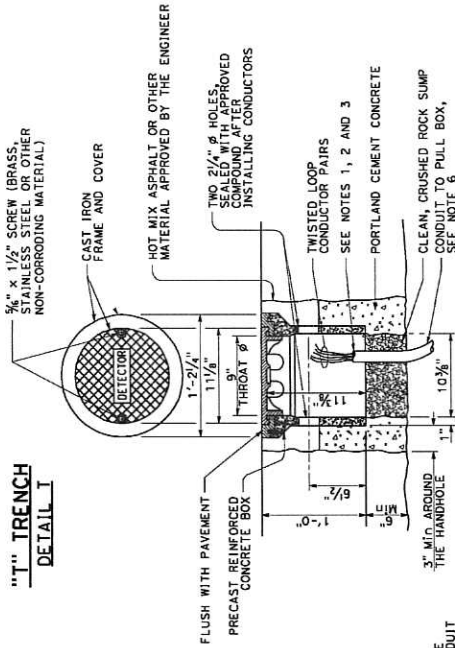
SHEET TOTAL	PROJECT	ROUTE	DATE
	NO.	NO.	NO.
REGISTERED ELECTRICAL ENGINEER May 20, 2011 APPROVAL DATE THIS SEAL IS VALID FOR THE PROJECT AND SHEETS OF THIS PLAN SHEET. THIS SEAL IS NOT BE RESPONSIBLE FOR THE ACCURACY OF THE INFORMATION SHOWN ON THIS PLAN SHEET.			

NOTES:

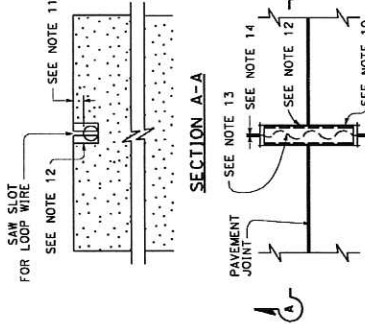
- Bushing shall be used at end of conduit.
- Tap detector conductors or cables 3" each side of bushings.
- Install duct seal compound to each end of termination conduit before installing sealant.
- Round all sharp edges where detector conductors or cables have to pass.
- End of conduit shall be 3/8" below roadway surface.
- Conduit size
 - Loop conductors 1 to 2 pairs 1" minimum
 - 1/2" C minimum 3 to 4 pairs
 - 2" C minimum 5 or more pairs
- Splice detector conductors or cables to detector lead-in-cable.
- Location of detector handhole when shown on plans.
- When the shoulder and traveled way are paved with the same material and there is no joint between them, the conduit shall extend only 2'-0" into the shoulder pavement.
- 3/4" C, Type 3 conduit 6" long minimum, plug both ends with duct compound to keep out seant.
- 1/2" Minimum between top of conduit and pavement surface.
- Saw cut shall not exceed 1" in width and 1/8" longer than conduit to be installed.
- Conductors with 1/2" minimum stack inside conduit.
- Inductive loop detector saw slot.



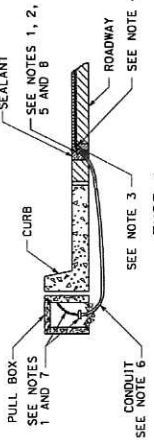
TRENCH DETAIL



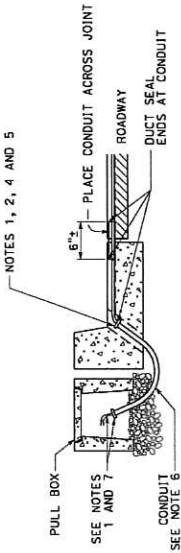
DETECTOR HANDHOLE DETAIL



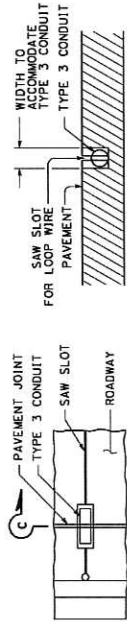
TYPICAL LOOP LEAD-IN DETAIL AT PAVEMENT JOINT



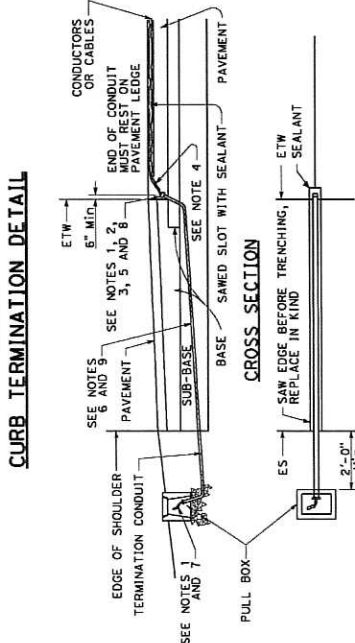
CURB TERMINATION DETAIL TYPE A



CURB TERMINATION DETAIL TYPE B



SHOULDER TERMINATION DETAILS SECTION C-C



SHOULDER TERMINATION DETAILS SECTION C-C

STATE OF CALIFORNIA
DEPARTMENT OF TRANSPORTATION
**ELECTRICAL SYSTEMS
(CURB TERMINATION
AND HANDHOLE)**
NO SCALE

ES-5D

