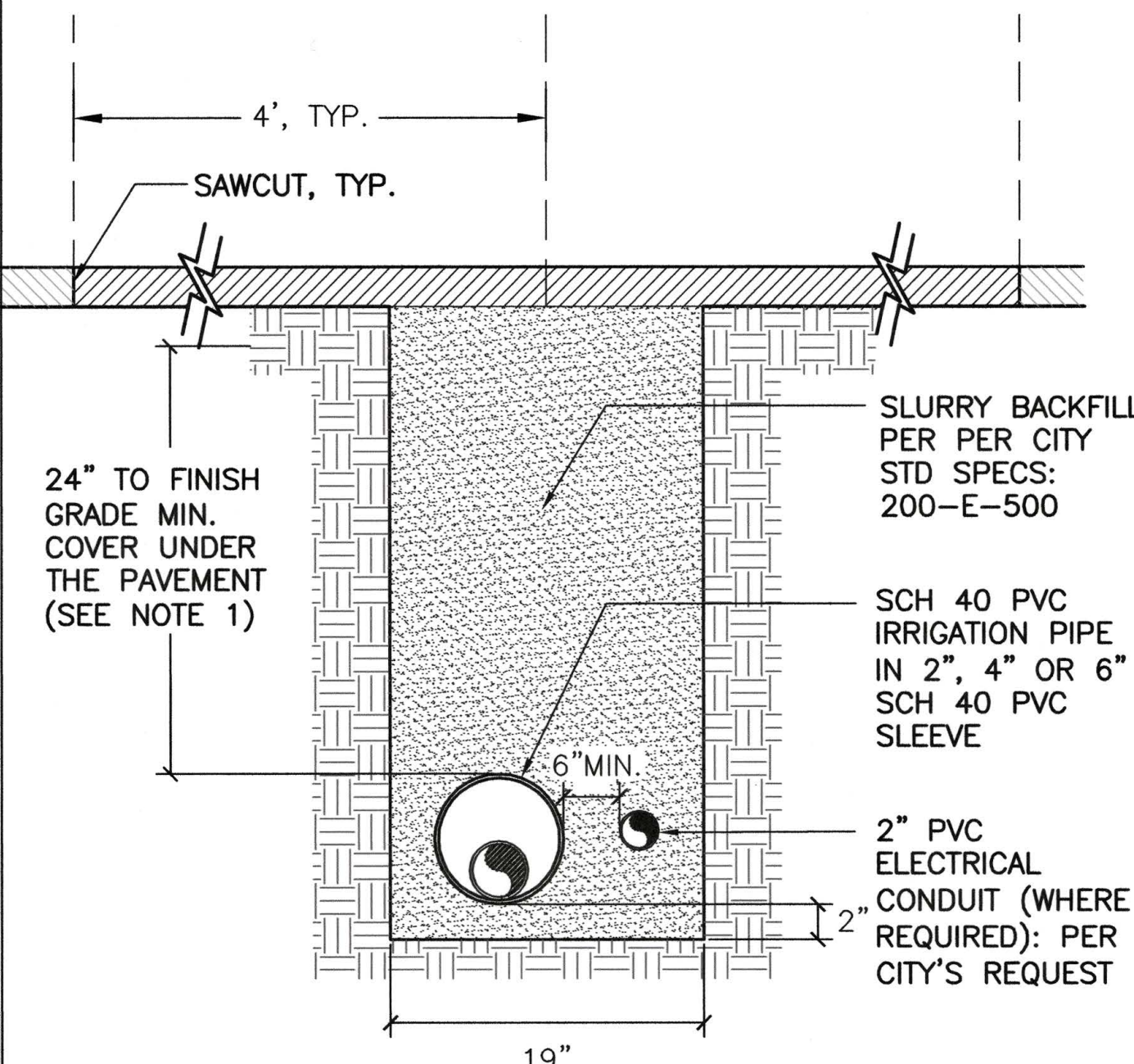
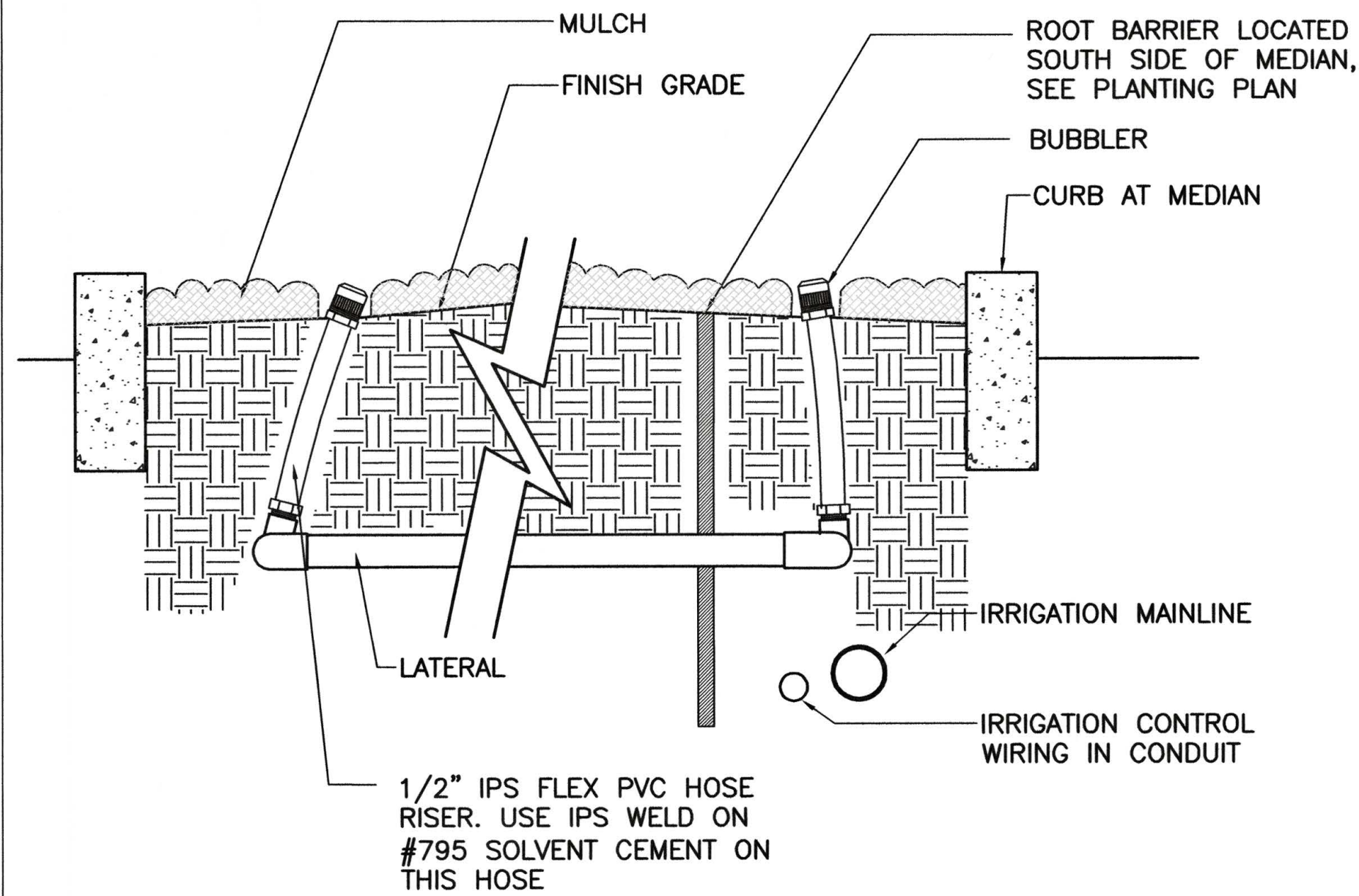


- NOTES:
 1. POTHOLE FOR UTILITY CONFLICTS. THE TRENCH DEPTH SHALL BE ADJUSTED IN CASE OF (E) UTILITY CONFLICTS.
 2. TRENCH SHALL BE PLATED UNTIL FINAL PAVING



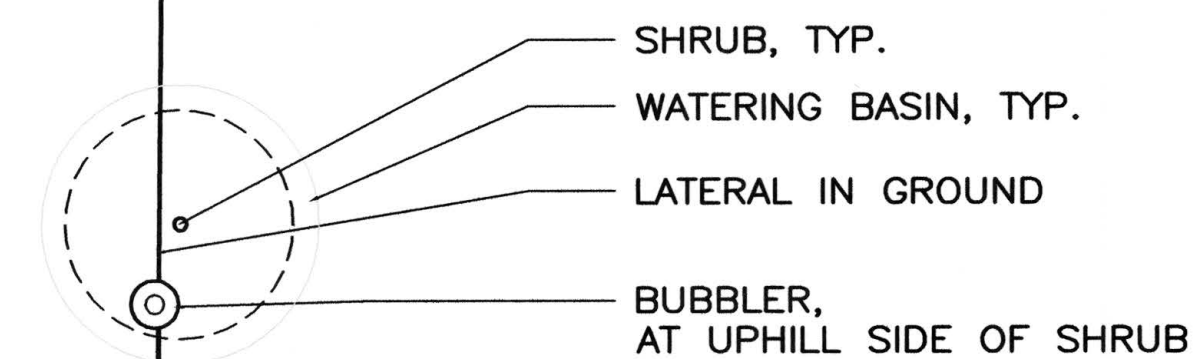
IRRIGATION TRENCH AT PAVED ROAD

NOTE:
 SEE BUBBLER IRRIGATION THIS SHEET.

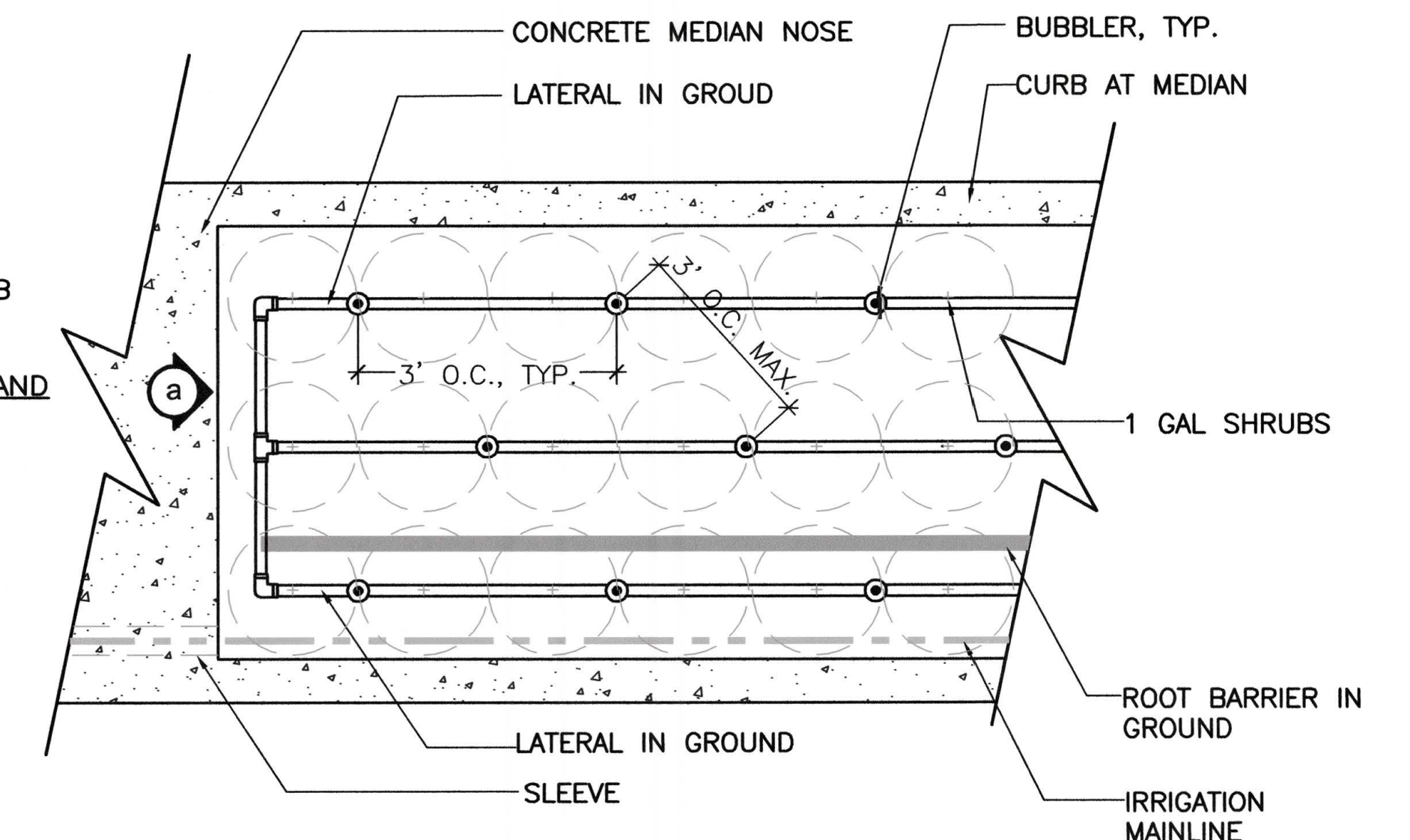


SECTION VIEW-a

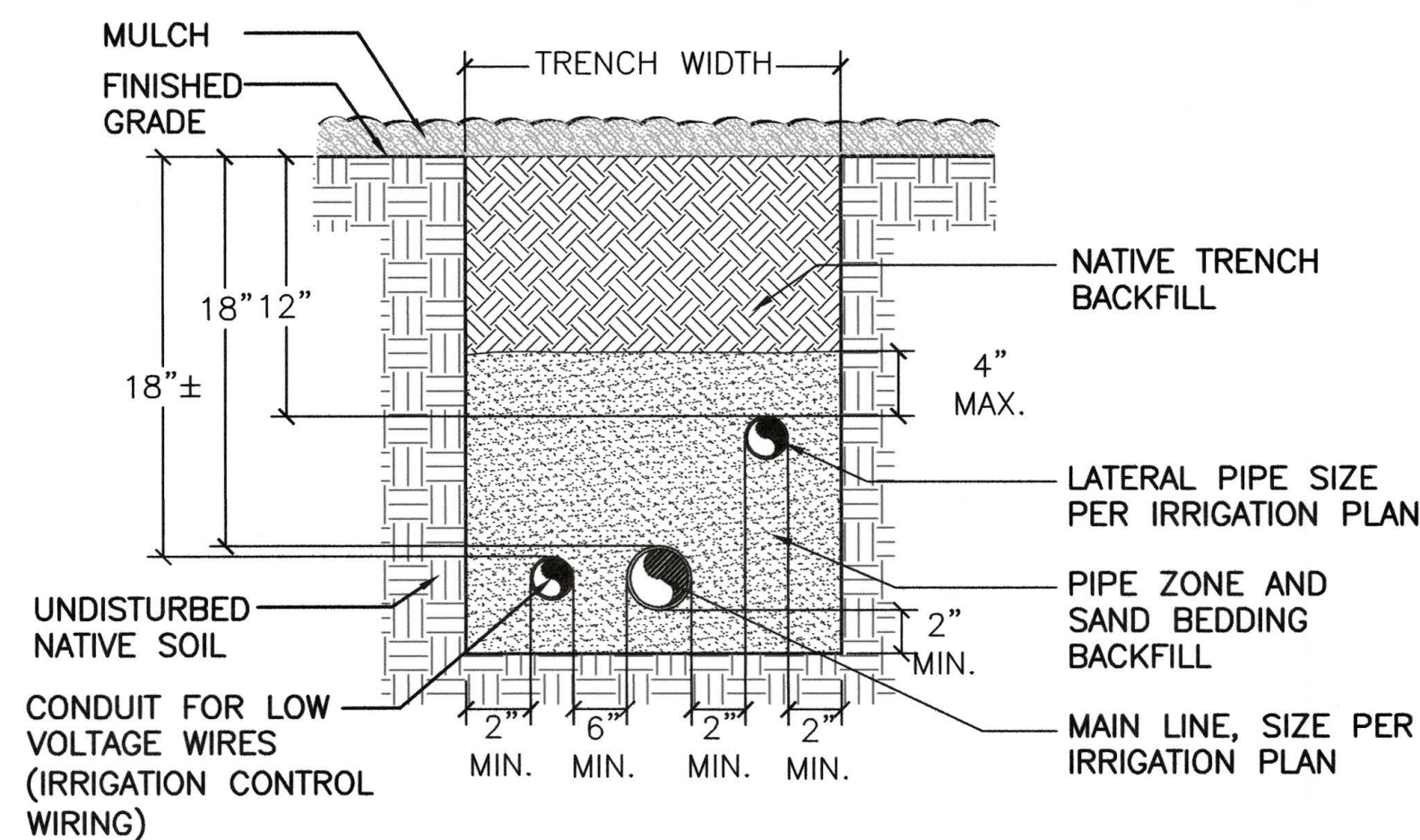
(C) TYPICAL SECTION AT MEDIAN NOSE
 NOT TO SCALE



PLAN VIEW (5GAL SHRUB AND 1GAL ARCTOSTAPHYLOS UVA-URASI)



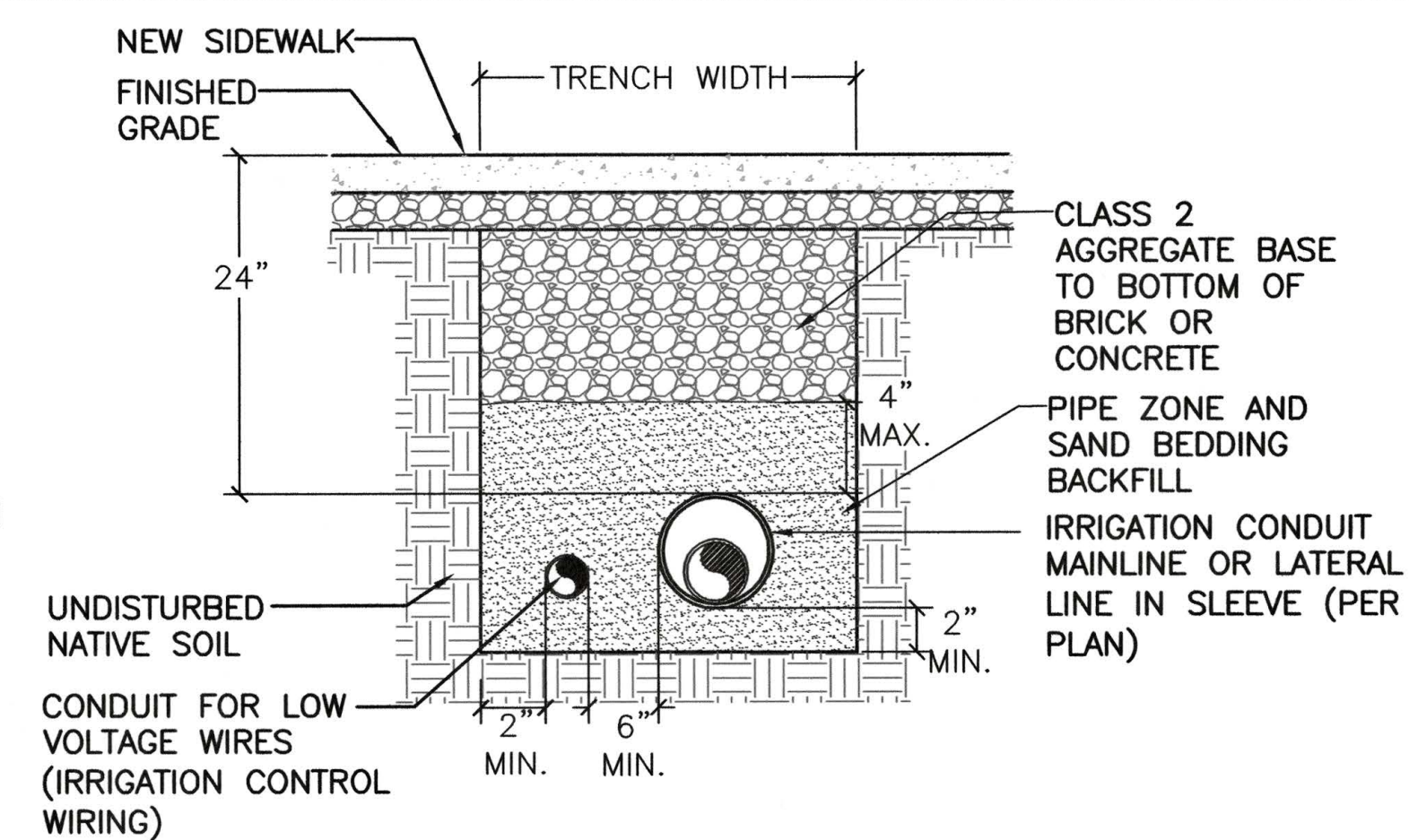
PLAN VIEW AT MEDIAN NOSE (1 GAL TULBACHIA VIOLACEA / ERIGERON KARVINSKIANUS)



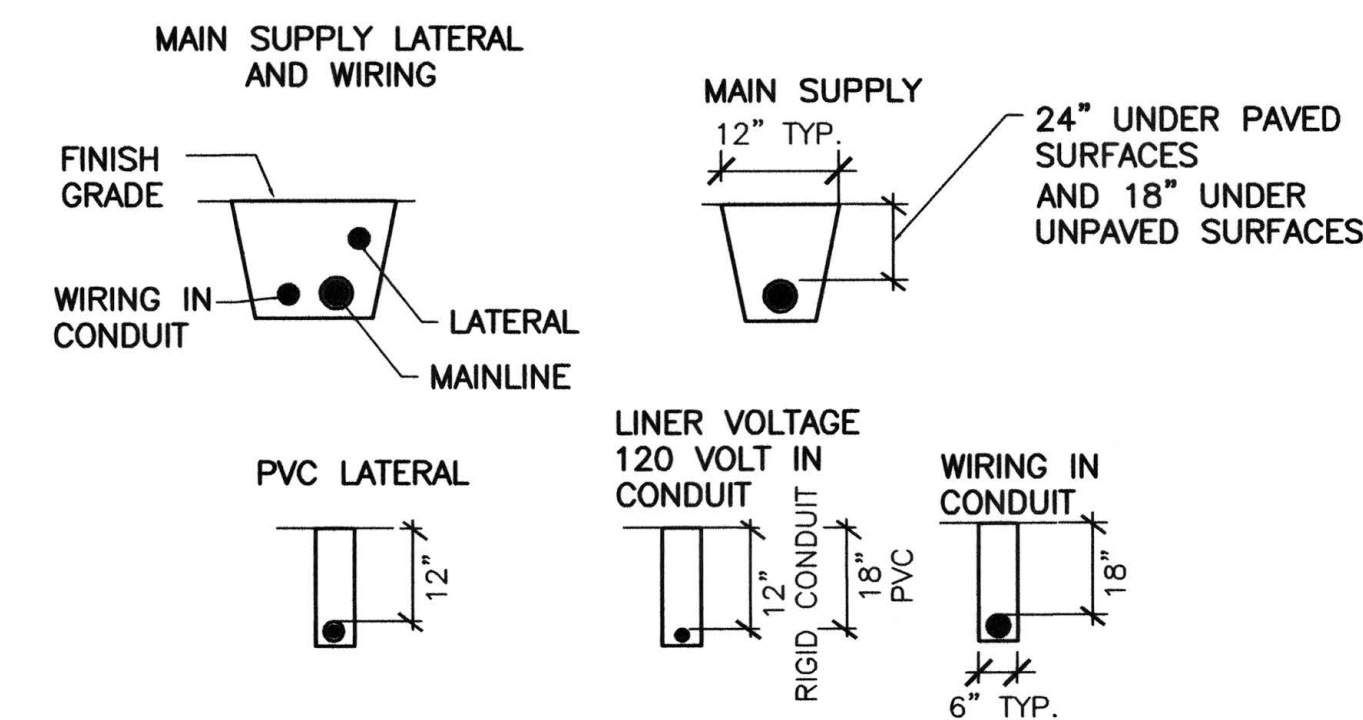
IRRIGATION TRENCH AT MEDIAN (PLANTING AREA)

- NOTES:
 1. MODIFY TRENCH LOCATIONS & DETAILS TO ACCOMMODATE FIELD CONDITIONS AS DIRECTED BY ENGINEER.
 2. CONTRACTOR SHALL PROTECT PIPE FROM BREAKAGE AND LEAKS DURING CONSTRUCTION.
 3. COVER PER IRRIGATION SPEC: 12" MIN. ON LATERAL LINES AND 18" MIN. ELSEWHERE.
 4. ALL PLASTIC PIPING SHALL BE INSTALLED IN TRENCH IN A SERPENTINE MANNER AS PER THE MANUFACTURER'S RECOMMENDATIONS.
 5. ALL 120 VOLT WIRING SHALL BE IN CONDUIT AND SHALL COMPLY WITH ALL APPLICABLE CODES.
 6. SLEEVE SHALL EXTEND A MINIMUM OF 18" BEYOND THE OUTSIDE EDGE OF SIDEWALK, DRIVEWAY, OR CURB LIMITS.
 7. IN LANDSCAPE AREAS BACKFILL MATERIAL SHALL BE THE EARTH EXCAVATED FROM THE TRENCHES. FREE FROM ROCKS, CONCRETE CHUNKS, AND OTHER FOREIGN OR COURSE MATERIALS. CAREFULLY SELECT BACKFILL THAT IS TO BE PLACED AROUND AND OVER PLASTIC PIPE TO AVOID ANY SHARP OBJECTS WHICH MAY DAMAGE THE PIPE.

(D) TYPICAL IRRIGATION TRENCH
 N.T.S.



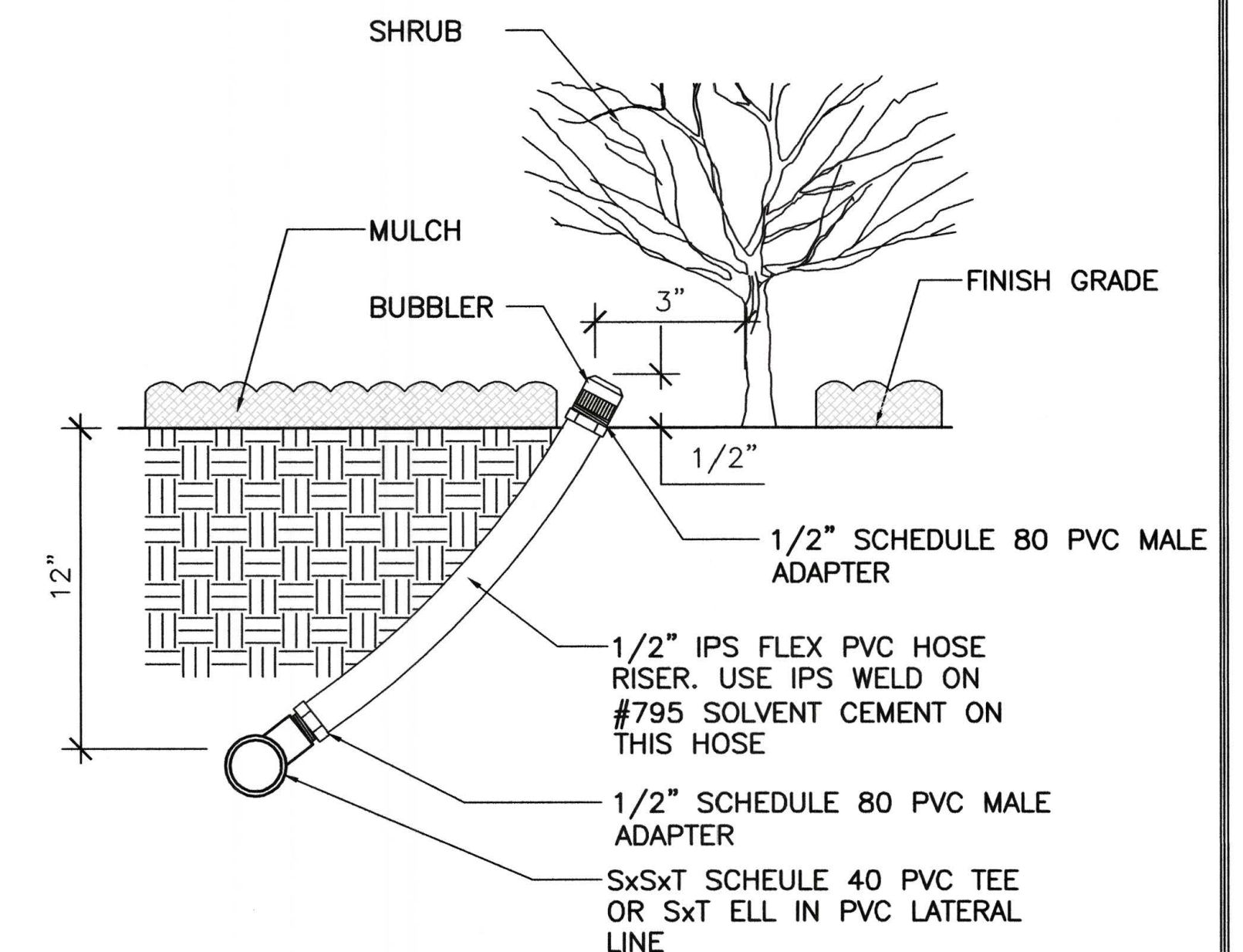
IRRIGATION TRENCH AT SIDEWALK



NOTES:

- ALL WIRE SPLICES SHOULD USE "KING" ONE STEP #40-562 KITS OR EQUAL.
- TAPE AND BUNDLE WIRING, SEE SPECS FOR INTERVAL. ALL MAIN SUPPLY LINES TO BE INSTALLED IN ACCORDANCE WITH MANUFACTURER'S INSTALLATION SPECS AND TO LOCAL CODE.
- EPOXY HOT-PACS SHALL NOT BE USED.

(B) TRENCHING DIAGRAM
 NOT TO SCALE



SECTION VIEW

(A) TYPICAL SHRUB BUBBLER IRRIGATION
 NOT TO SCALE

NO.	DATE	BY	REVISIONS

SCALE	1" = 20'
DATE	September 3, 2013
DRAWN BY	HK
CHECKED BY	LG



IRRIGATION DETAILS
CITY OF LAFAYETTE
 PROJECT No. 014-9696
 MOUNT DIABLO BLVD / FIRST STREET TO BROWN AVENUE
 EAST END PED/BIKE AND STREETSCAPE IMPROVEMENTS PROJECT
 LAFAYETTE CALIFORNIA

REVIEWED BY:
 CITY OF LAFAYETTE

 TONY COE
 ENGINEERING SERVICES MANAGER
 DATE

SHEET **L107**
 PROJ. NO. 014-9696