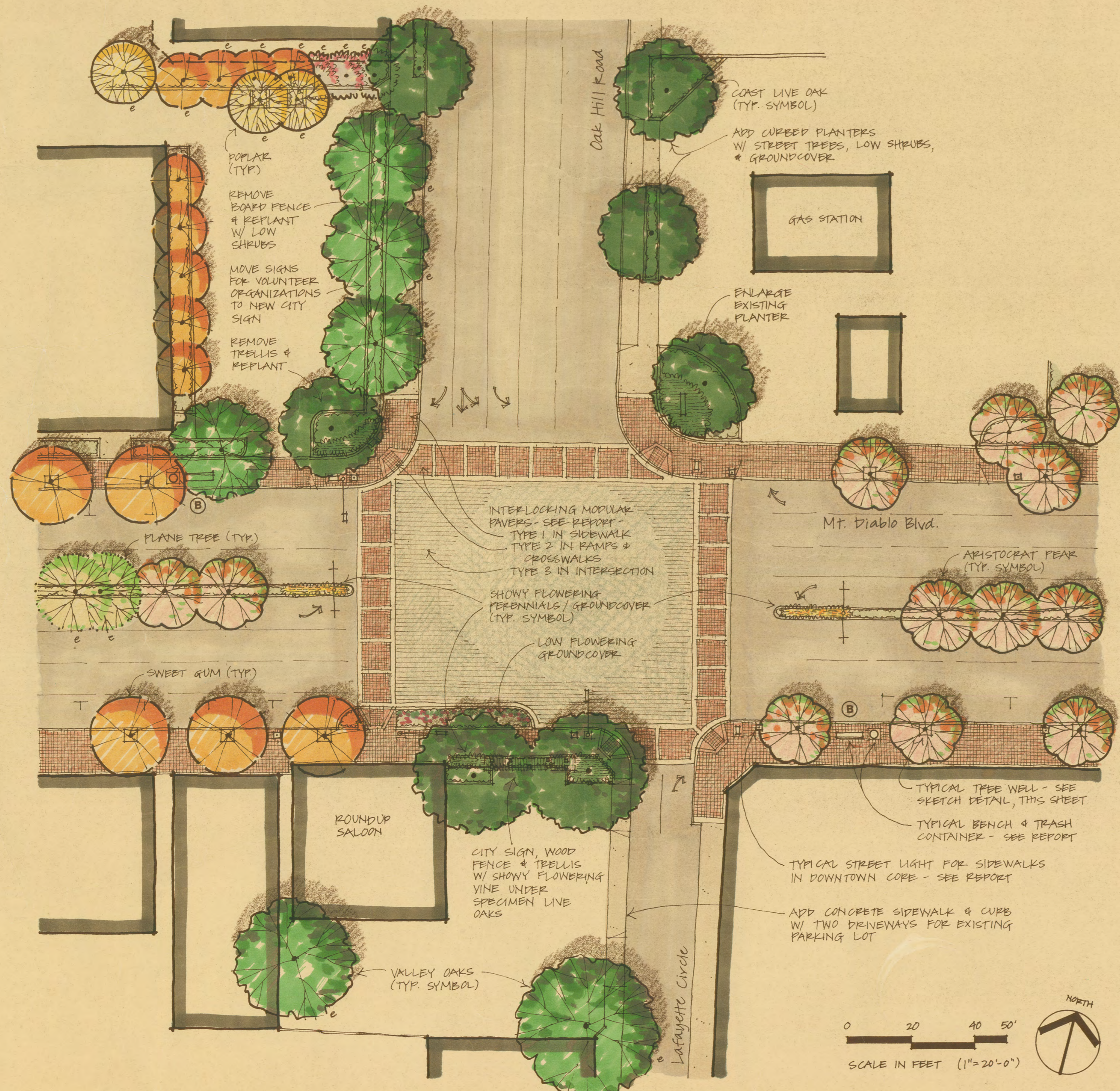
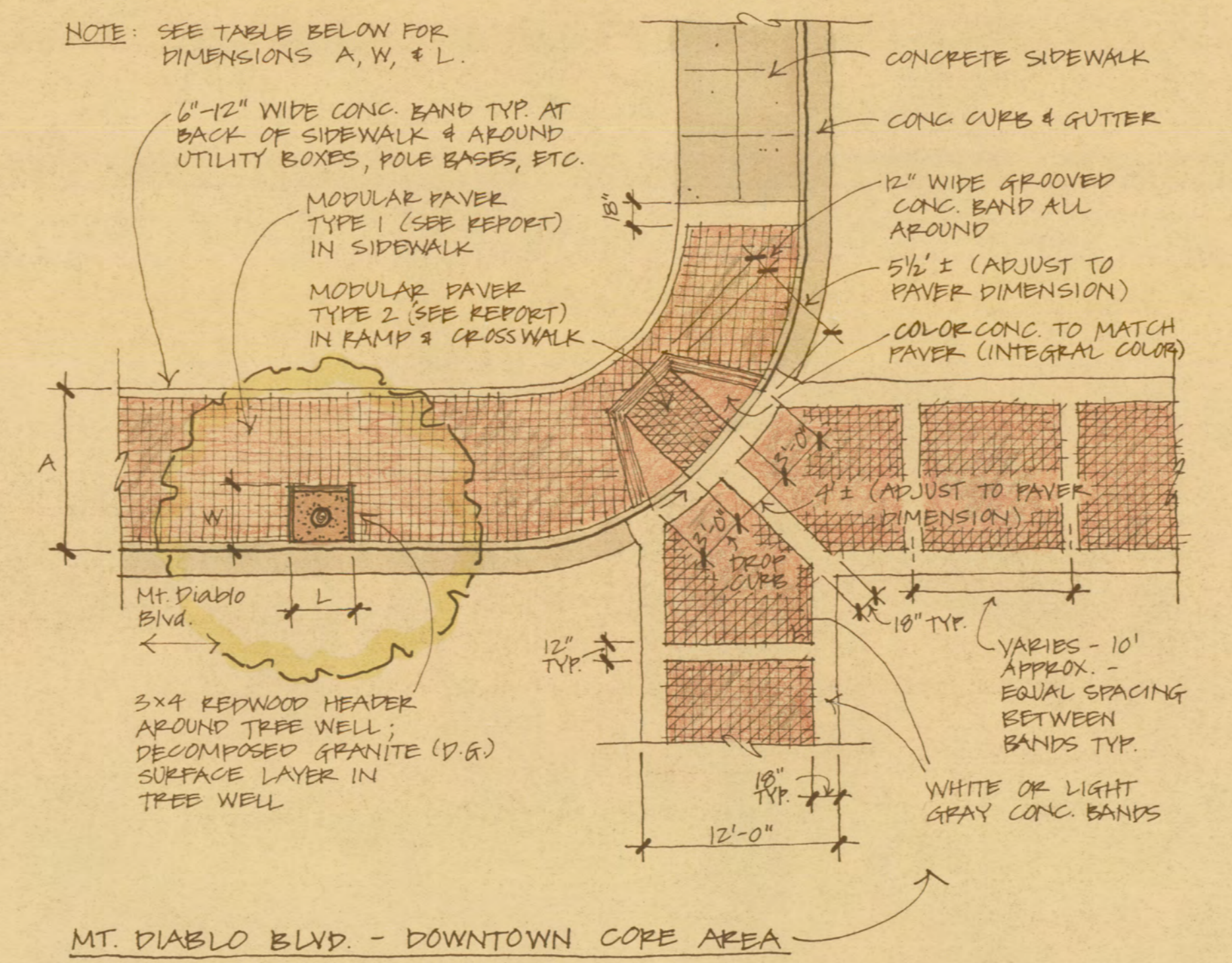




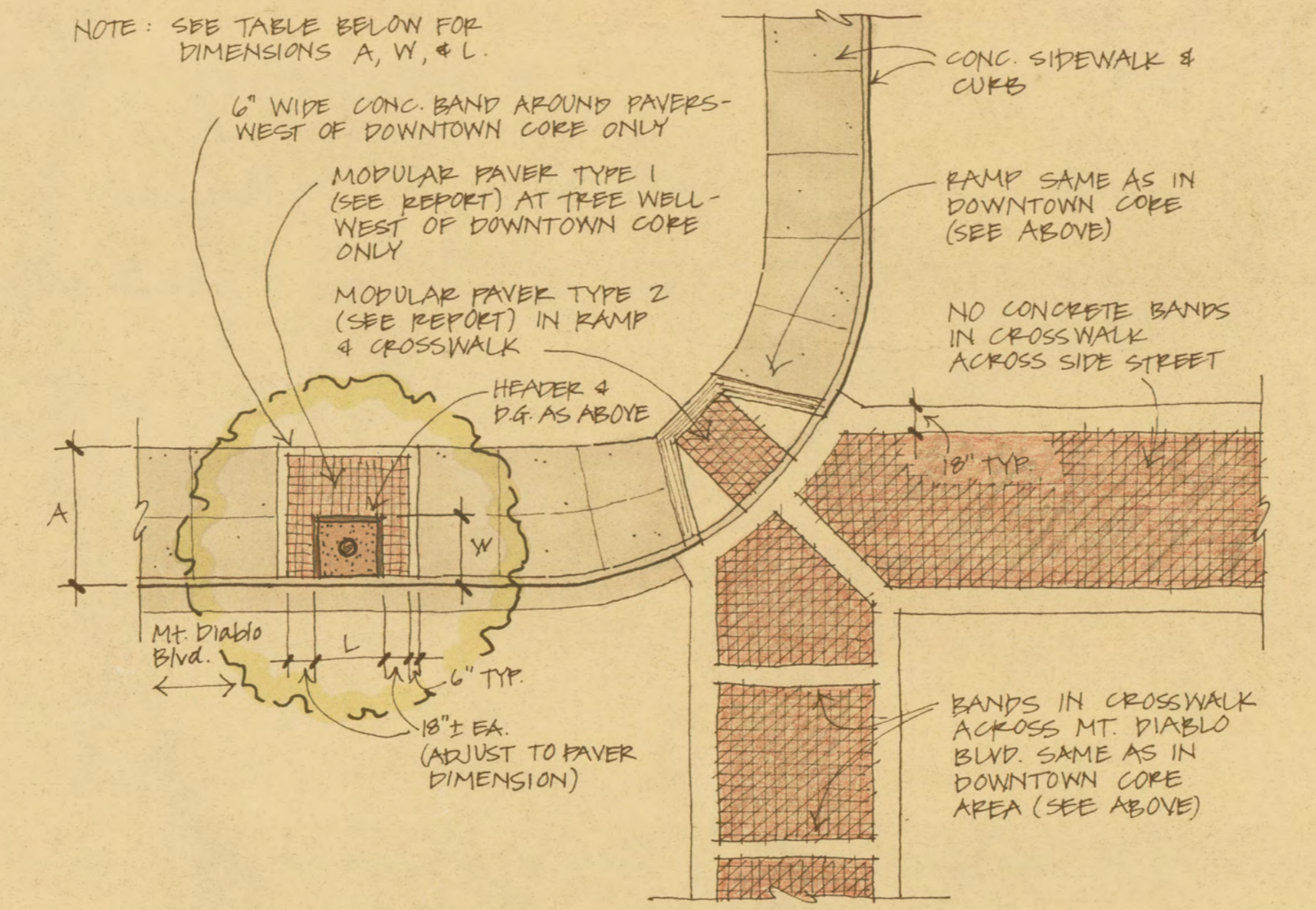
ELEVATION LOOKING SOUTH
1/8" = 1'-0"



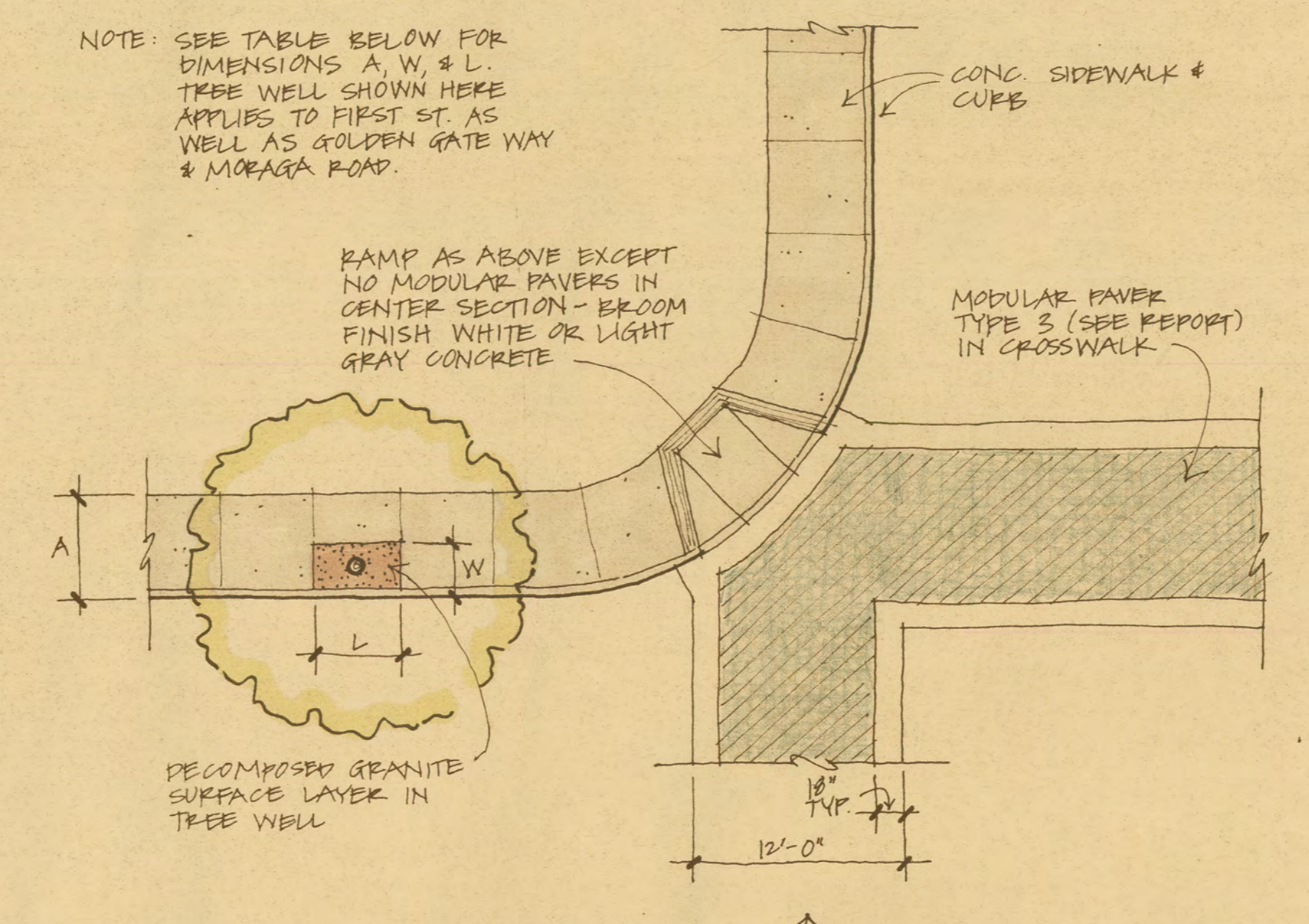
PRIMARY INTERSECTION
OAK HILL ROAD AT MT. DIABLO BLVD.



MT. DIABLO BLVD - DOWNTOWN CORE AREA



MT. DIABLO BLVD - EAST OR WEST OF DOWNTOWN CORE AREA



GOLDEN GATE WAY OR MORAGA ROAD

TABLE FOR TREE WELL DIMENSIONS

SIDEWALK WIDTH*	TREE WELL DIMENSIONS*	
	W	L
LESS THAN 8'-0"	3' ±	5' ±
8'-0" OR GREATER	4' ±	4' ±

*NOTE: DIMENSIONS A & W INCLUDE CURB WIDTH. WHERE TREE WELLS ARE SET IN MODULAR PAVING, ADJUST DIMENSIONS W (MINUS CURB WIDTH) & L TO BE EVEN MULTIPLES OF PAVEMENT WIDTH.

CROSSWALKS AND TREE WELLS

LEGEND

PLANT LIST AND SYMBOLS
MOST COMMON TREES

- (*) = dominant species
- Eucalyptus
- gummi (E.g.)
- Eucalyptus (E.L.)
- Moraine Ash
Fraxinus holtricha 'Moraine'
- Raywood Ash
Fraxinus oxycarpa 'Raywood'
- Evergreen Ash
Fraxinus uhdei
- Crepe Myrtle
- Lagerstroemia indica
- Quercus
- Liquidambar styraciflua - 'Fastival'
- 'Fals Alto'
- Pistache
Pistacia chinensis
- London Plane
Platanus acerifolia 'Yorkwood'
- Poplar
Populus nigra 'Italica'
- Aristocrat Pear
Pyrus calleryana 'Aristocrat'
- Evergreen Pear
Pyrus kawakamii
- Coast Live Oak
Quercus agrifolia
- Holly Oak
Quercus ilex
- Valley Oak
Quercus lobata
- Red Oak
Quercus rubra
- Shumard Oak
Quercus shumardii
- Southern Live Oak
Quercus virginiana
- Redwood
Sequoia sempervirens
- Existing Trees
- LR Long Range Improvement

GENERAL TREES

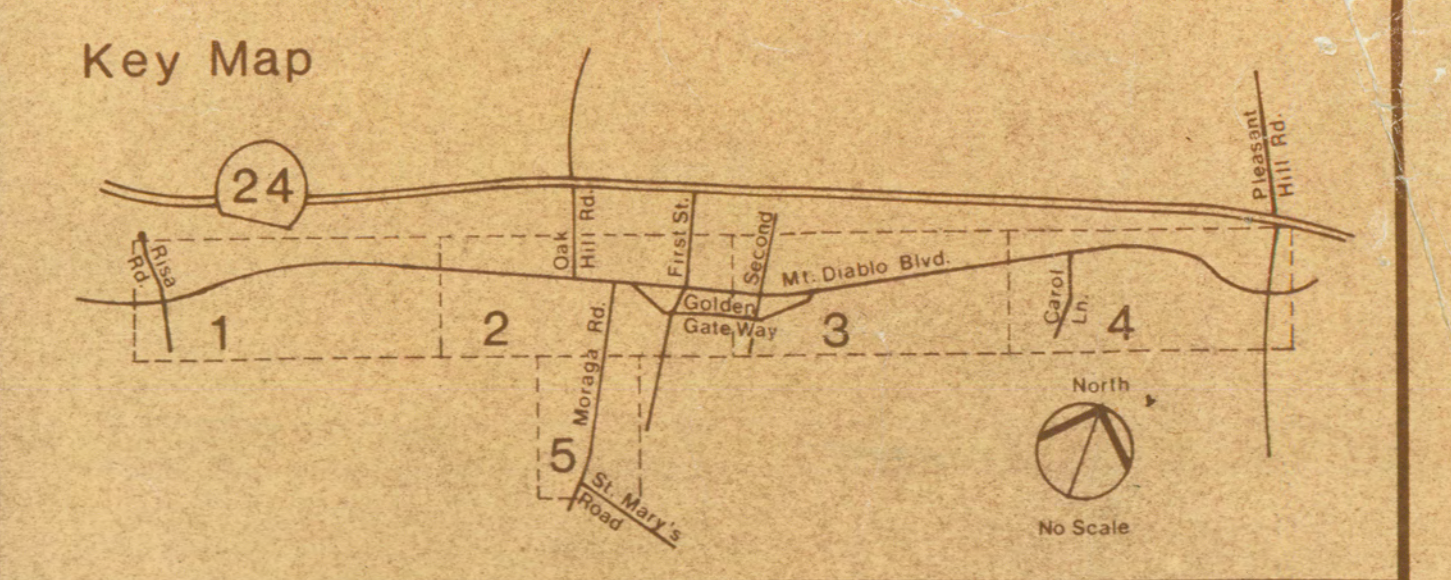
- Broadleaf Evergreen - for example:
 - Acacia melanoxylon (A.c.)
 - Blackwood Acacia
 - Ceratonia siliqua
 - Carob
 - Cinnamomum camphora (C.c.)
 - Camphor
 - Grevillea robusta
 - Silf-Oak
 - Fraxinus californiana
 - Carolina cherry
 - Podocarpus spp
 - Podocarpus
 - Schinus molle (S.m)
 - California Pepper
- Conifers - for example:
 - Cedrus deodara (C.d)
 - Peacock Cedar
 - Pinus spp
 - Pines
- Deciduous - for example:
 - Aesculus californica (A.c)
 - California Buckeye
 - Albizia julibrissin
 - Silf-Tree
 - Alnus rhombifolia
 - White Alder
 - Corya illinoensis 'Western Schley' (C.i)
 - Pecan
 - Gleditsia triacanthos
 - Honey Locust
 - Juglans spp
 - Walnut
 - Koeleria bipinnata (K.b)
 - Chinese Flame Tree
 - Liquidambar tulipifera (L.t)
 - Tulip Tree
 - Robinia ambigua 'Deschampsiana' (R.a)
 - Idaho Locust
 - Crataegus phaenopyrum (C.p)
 - Washington Hawthorn
 - Ulmus sp
 - Elm

SHRUBS/GROUNDCOVERS/PERENNIALS

- The following list of low shrubs, groundcovers, and perennials are located in the large areas of the median islands.
- LOW SHRUBS:
- Cistus kanabensis - Rockrose
 - Correa 'Carmine Belle' - Australian Fuchsia
 - Escallonia 'Newport Dwarf'
 - Lagerstroemia indica (Dwarf hybrid) Crepe Myrtle
 - Nerium oleander 'Little Salmon' Dwarf Oleander
- GROUNDCOVERS:
- Anacardium - Emerald Carpet - E.C. Franzonia
 - Cistus salvifolius - Rockrose
 - Hypericum calycinum - St. Johnswort
 - Podarctis officinalis - Calliopsis napalm - Rosemary
- PERENNIALS:
- Agapanthus 'Peter Pan'
 - Anemone hybrid (Yellow, Orange, Red)
 - Gazania hybrid (Yellow, Orange)
- The following list of low shrubs, groundcovers, and perennials are located in the sidewalk areas east of First Street:
- LOW SHRUBS:
- Anacardium - Emerald Carpet - E.C. Franzonia
 - Anemone hybrid (Yellow, Orange, Red)
 - Chionodoxa 'Carmine Belle' - Flowering Quince
 - Cistus purpureus - Orange Spot Rockrose
 - Escallonia 'Newport Dwarf'
 - Escallonia 'Terry'
 - Nerium oleander 'Little Salmon' - Dwarf Oleander
- GROUNDCOVERS:
- SAME AS ABOVE
- PERENNIALS:
- Agapanthus 'Peter Pan'
 - Gazania hybrid (Yellow, Orange)
- The following shrubs are located in the Caltrans Planting strip - East end of town.
- Escallonia frutescens
 - Chionodoxa 'Carmine Belle' - Toyon
 - Fraxinus ilicifolia - Hollyleaf Cherry
- Low Shrubs and Groundcovers
- Showy Groundcovers and Perennials

GENERAL SYMBOLS

- Bus Stops
- New Street Light in Median
- Existing Street Light - single luminaire
- Existing Street Light - double luminaire
- Existing Power Poles and Low Overhead Wires
- Existing Stop Lights
- Proposed Modular Pavement
- Sidewalks / Crosswalks
- Major Intersections / Crosswalks
- Plaza



DOWNTOWN STREET IMPROVEMENT
MASTER PLAN
City of Lafayette, California

Russell A. Beatty, ASLA - Landscape Architect

Date:	Sheet
Revisions:	6
	of 6 Sheets

LEGEND AND DETAILS