

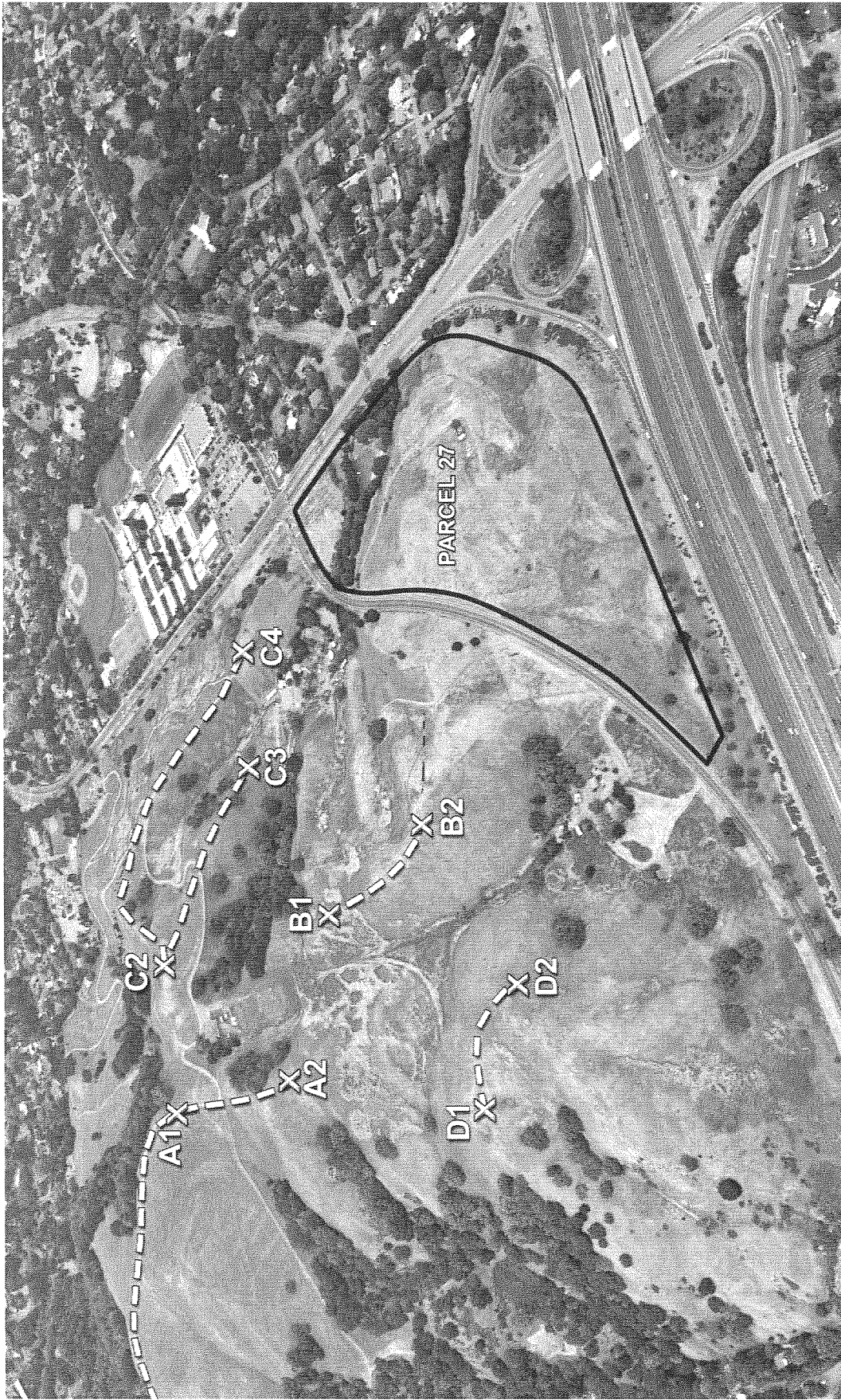


THE TERRACES OF LAFAYETTE
48N 27E 150 027 | 3-33 DEAR HILL ROAD, STANTON, CO 10808 94746
AERIAL VIEWS OF RIDGE

AMD FAMILY TRUST | O'BRIEN LAND COMPANY, L.L.C.

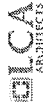


ORG1-63
cont.



THE TERRACES OF LAFAYETTE
47N 237 156-0027 | 3-33 BRADFORD RD., SUITE 200, LAFAYETTE, LA 70504
AERIAL VIEWS OF RIDGE

AMD FAMILY TRUST | O'BRIEN LAND COMPANY, LLC.



ORG1-63
cont.



THE TERRACES OF LAFAYETTE
AFN 232 150-027 | 333 DEAR HILL ROAD, SUITE 101, COLUMBIA, MD 21046
AERIAL VIEWS OF RIDGE

AMD FAMILY TRUST | O'BRIEN LAND COMPANY, LLC.



ORG1-63
cont.



THE TERRACES OF LAFAYETTE
47N 232 174-0-27 | 3-33 824P 1811 4646; 41 54V 411 67 1 05PHN 987467

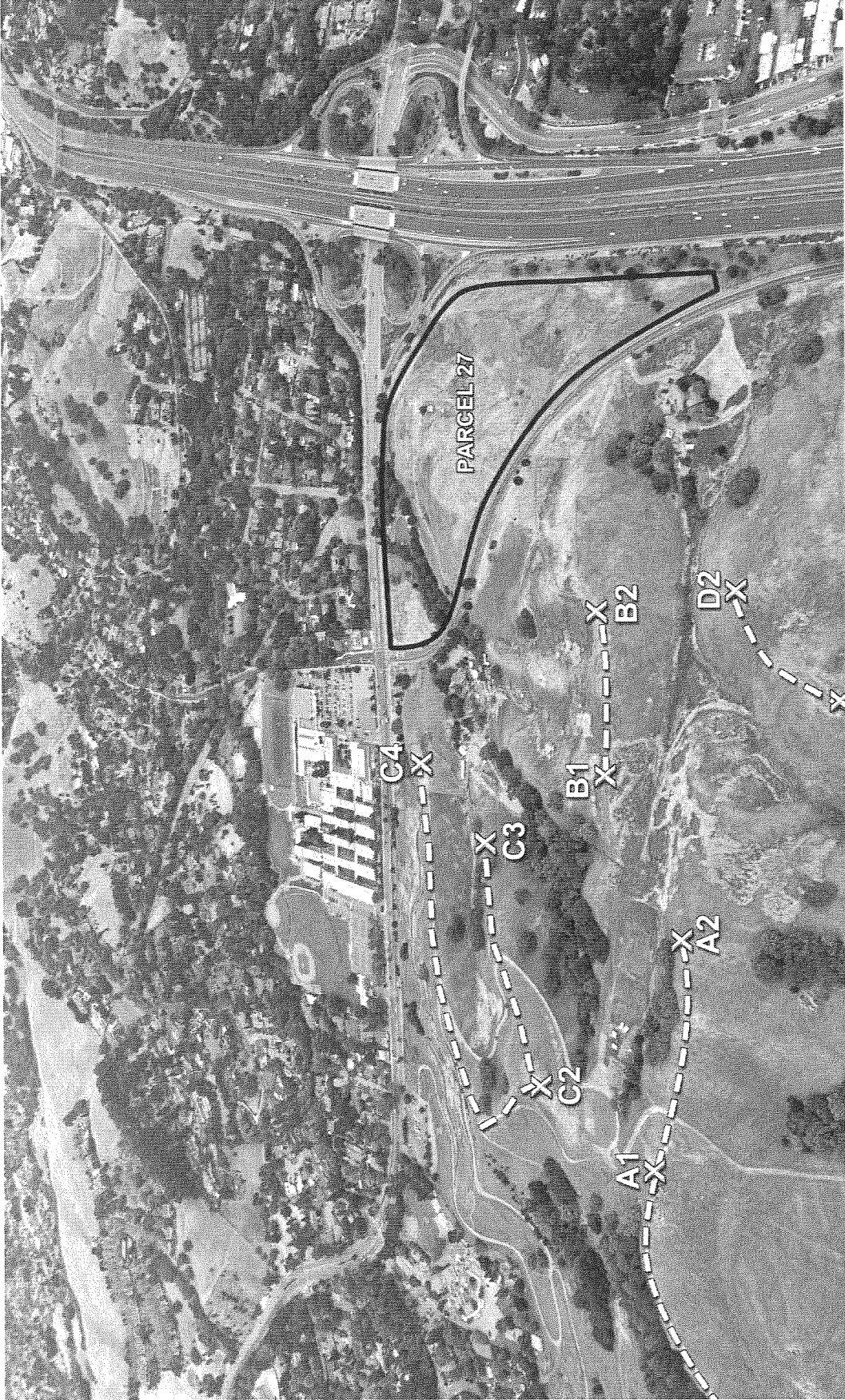
AERIAL VIEWS OF RIDGE

AMD FAMILY TRUST

O'BRIEN LAND COMPANY, L.L.C.



ORG1-63
cont.



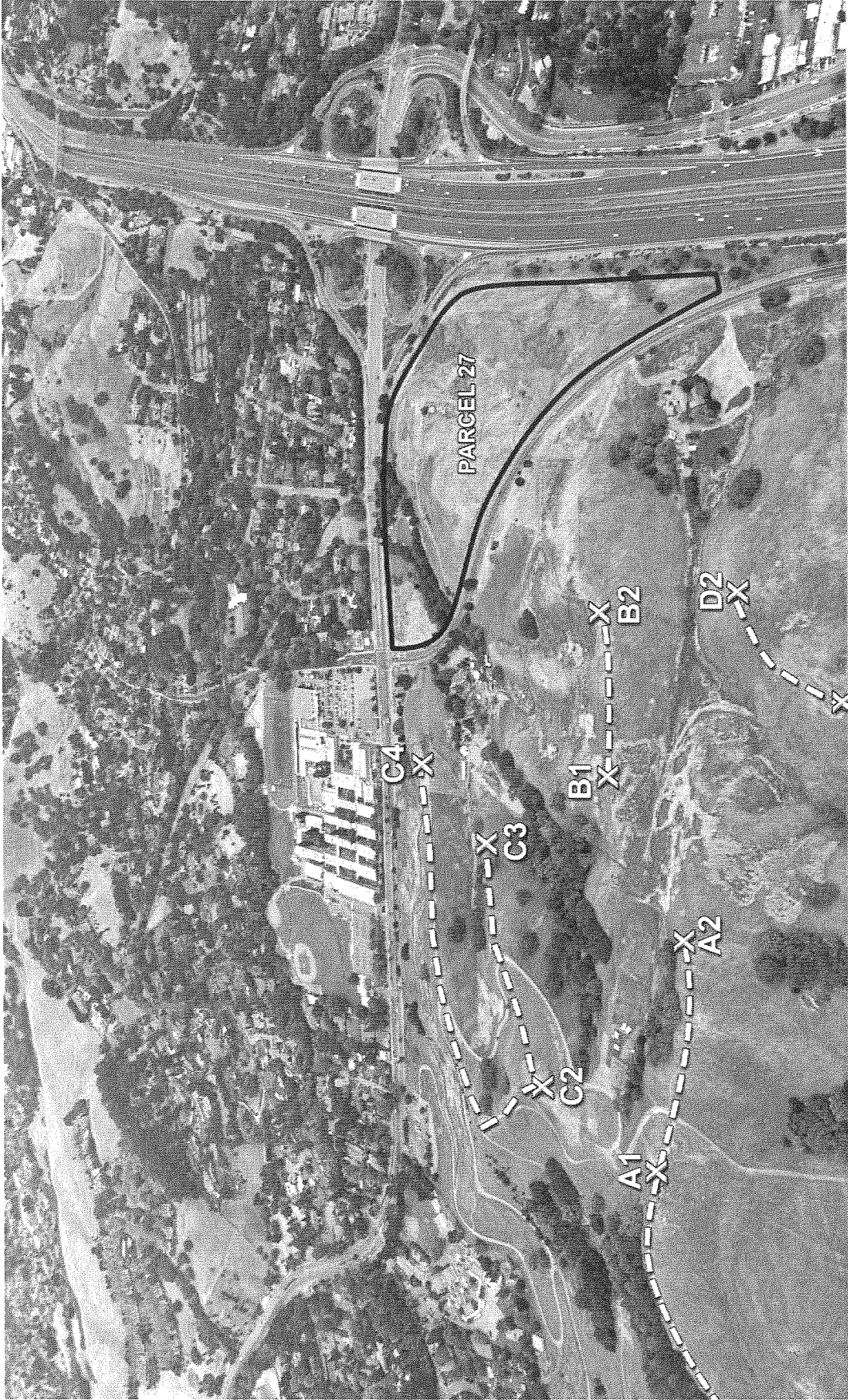
THE TERRACES OF LAFAYETTE
APN 212 15-0-027 | 7351 DEAR HE RD., LAFAYETTE, CA 94549

AERIAL VIEWS OF RIDGE

AMD FAMILY TRUST | O'BRIEN LAND COMPANY, LLC.



ORG1-63
cont.



THE TERRACES OF LAFAYETTE
45N 232 150-027 | 3-33 DEAF HILL ROAD, DEAF HILL, TX 79045
AERIAL VIEWS OF RIDGE

AMD FAMILY TRUST | O'BRIEN LAND COMPANY, LLC.



ORG1-64