



THE TERRACES OF LAFAYETTE
APN 212-1-0-027 | 1/23 DEAR HILL RD., LAFAYETTE, CALIFORNIA 94549
AERIAL PHOTOGRAPH (LOOKING WEST)

AMD FAMILY TRUST | O'BRIEN LAND COMPANY, L.L.C. | **OLCA**
REGULATORY

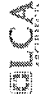
ORG1-63
cont.



THE TERRACES OF LAFAYETTE
APP. 2/27/15-01/27/15 3275 INRAK - 150A - LAFAYETTE, CALIFORNIA 94626
AERIAL SIMULATION (LOOKING WEST)

AMD FAMILY TRUST

O'BRIEN LAND COMPANY, LLC



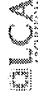
ORG1-63
cont.



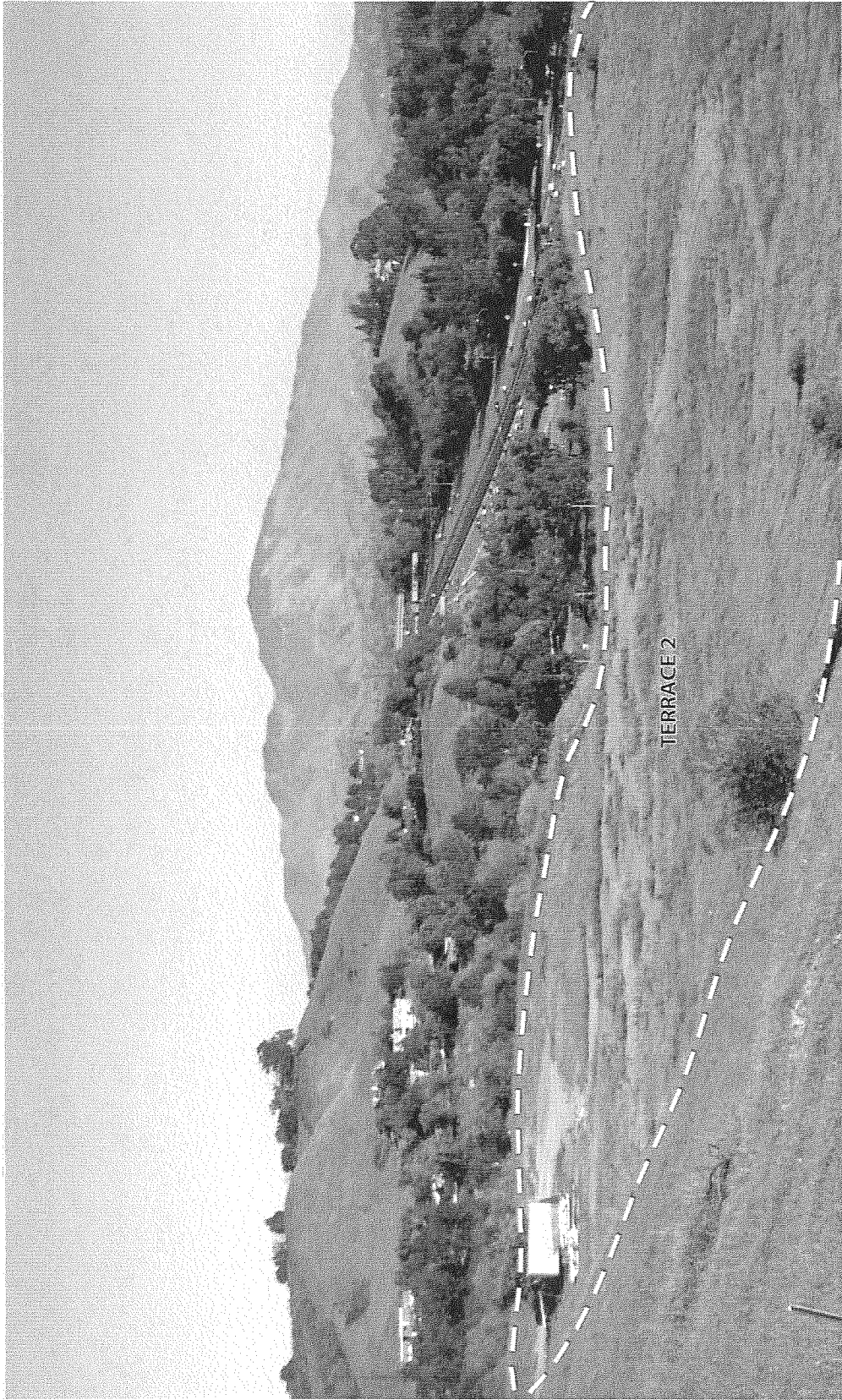
THE TERRACES OF LAFAYETTE
APN 032213AB0027 | 3755 PAGE 01 5/18 | LAFAYETTE, CALIFORNIA 94508
AERIAL SIMULATION (LOOKING SOUTH)

AIMD FAMILY TRUST

O'BRIEN LAND COMPANY, LLC



ORG1-63
cont.



THE TERRACES OF LAFAYETTE
487 737-1800 | 333 BISHOP BLVD., LAFAYETTE, CALIFORNIA 94501
VIEW FROM SITE

AMD FAMILY TRUST | O'BRIEN LAND COMPANY, LLC | HILCA ARCHITECTS

ORG1-63
cont.

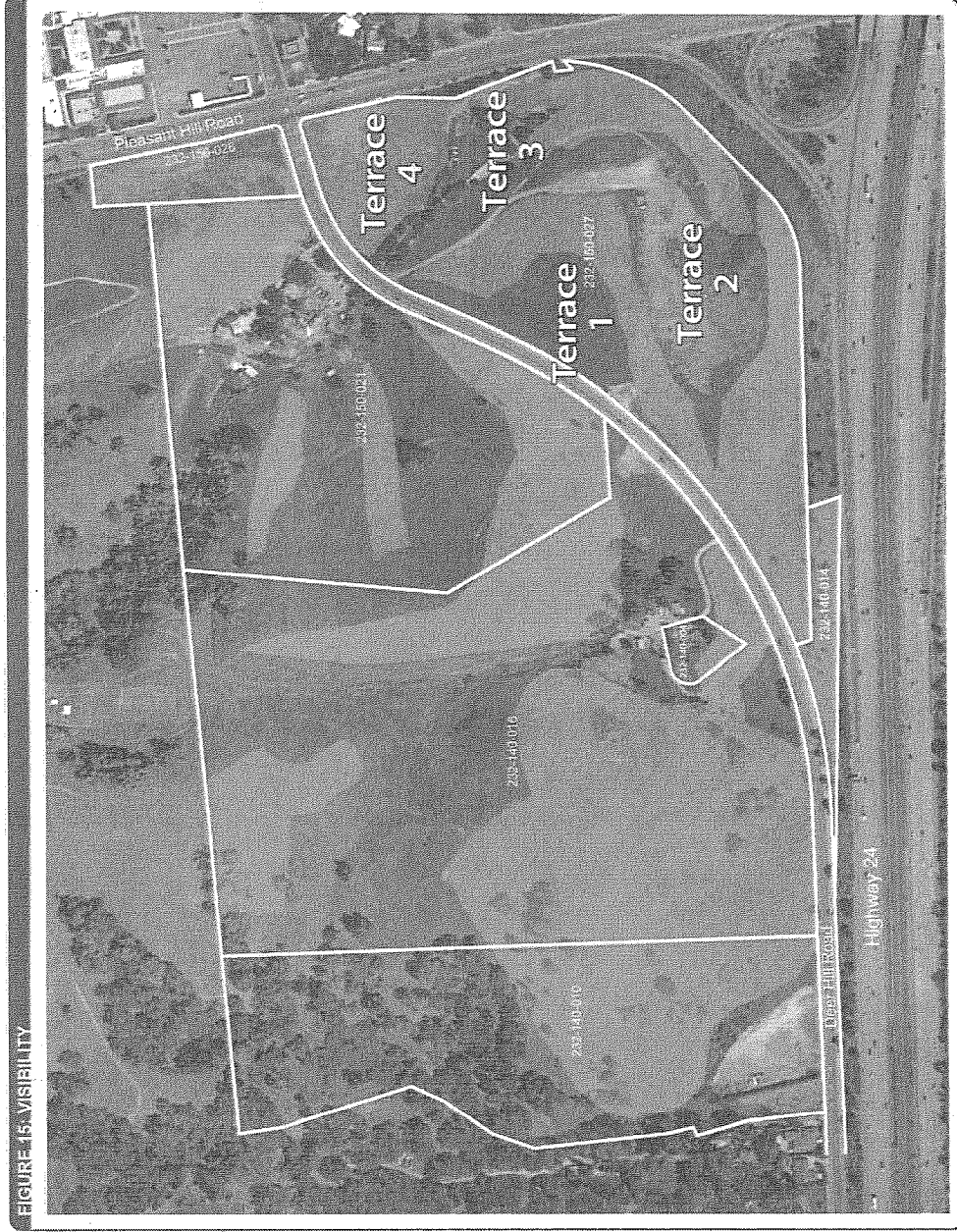


FIGURE 15. VISIBILITY

LEGEND

Visible from Viewing Evaluation Map Locations (when viewed from lower elevations from publicly owned property)

NORTH

0 100 200 400
Feet

15,000 Sq. Ft.
1 Acre

MHA
ENVIRONMENTAL CONSULTING, INC.

OLCA
ARCHITECTS

O'BRIEN LAND COMPANY, LLC

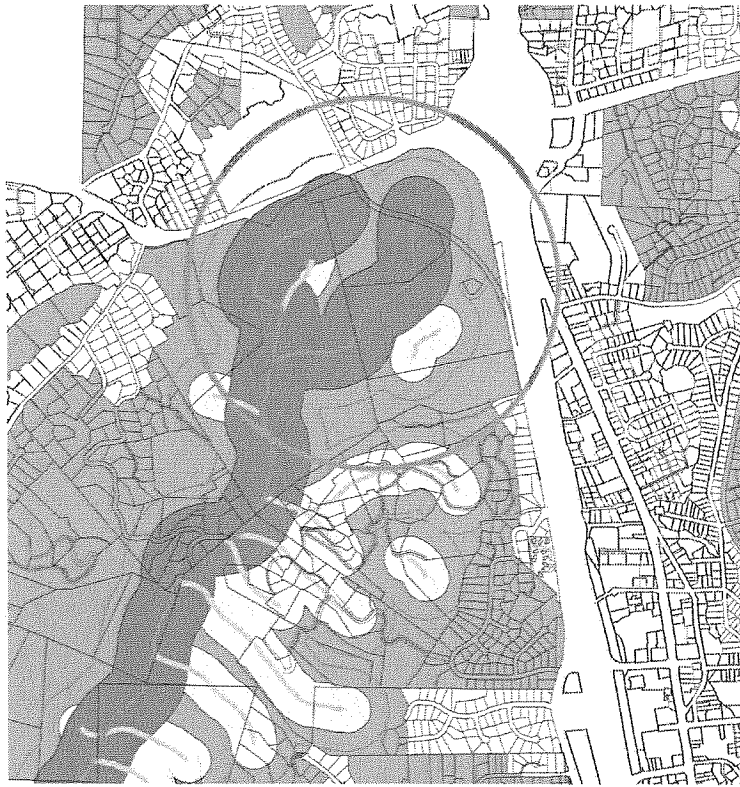
THE TERRACES OF LAFAYETTE

AMD FAMILY TRUST

OLCA ARCHITECTS

VISIBILITY EXHIBIT FROM EASTERN DEER HILL OPPORTUNITIES AND CONSTRAINTS ANALYSIS

ORG1-63
cont.



ADOPTED JULY 8, 2002 - ORDINANCE 528



City of Lafayette

Lafayette Area Ridge Map
Hillside Overlay District Map

Adopted July 8, 2002 - Ordinance 528

THE TERRACES OF LAFAYETTE
APN 232-1-AD-027 - LAFAYETTE, CALIFORNIA 94509

LAFAYETTE AREA RIDGE MAP - HILLSIDE OVERLAY DISTRICT MAP



CORRECTED PER ENGEO REPORT

- Ridgeline Protected Area
- Lafayette Parcels
- Private Road
- Class I Ridge
- Class II Ridge
- Class I Setback (400-ft.)
- Class II Setback (250-ft.)
- Class III Ridge
- Hillside Overlay District



AMID FAMILY TRUST | O'BRIEN LAND COMPANY, LLC | OLCA

ORG1-63
cont.