

THE TERRACES OF LAFAYETTE

LAFAYETTE, CA

BY

O'BRIEN LAND COMPANY L.L.C.

VISUAL SIMULATIONS

MAY 6, 2011

ORG1-63





VIEWING EVALUATION SITES

THE TERRACES OF LAFAYETTE
LAFAYETTE, CA
O'BRIEN LAND COMPANY L.L.C.



ORG1-63
cont.

VISUAL SIMULATION - VIEW 1
CITY VIEWING EVALUATION SITE - #2 BACON COURT



EXISTING



THE TERRACES OF LAFAYETTE
LAFAYETTE, CA
O'BRIEN LAND COMPANY L.L.C.

1

ORG1-63
cont.

VISUAL SIMULATION - VIEW 1
CITY VIEWING EVALUATION SITE - #2 BACON COURT



PROPOSED - DAY OF COMPLETION



THE TERRACES OF LAFAYETTE
LAFAYETTE, CA

O'BRIEN LAND COMPANY L.L.C.

2

ORG1-63
cont.

VISUAL SIMULATION - VIEW 1
CITY VIEWING EVALUATION SITE - #2 BACON COURT



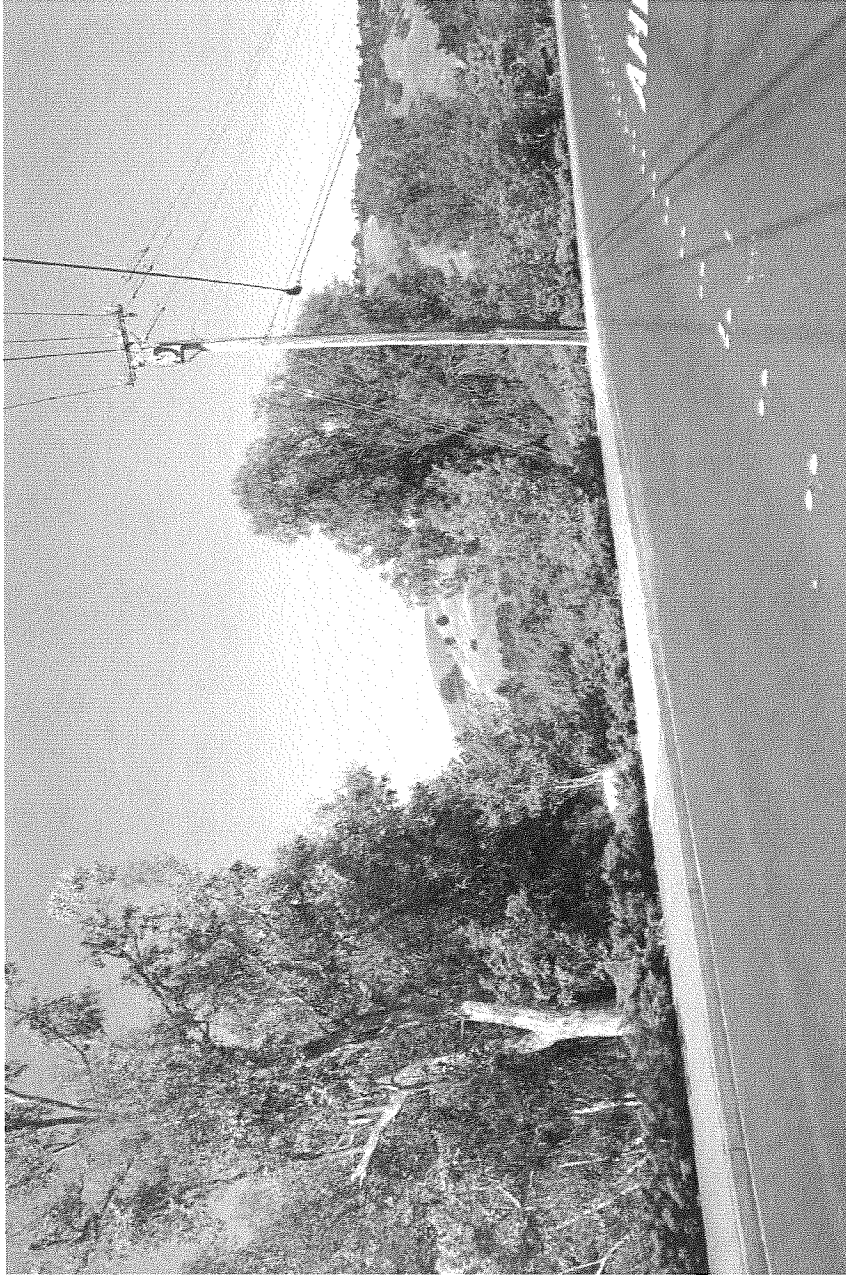
PROPOSED - WITH 5 YEARS LANDSCAPING

THE TERRACES OF LAFAYETTE
LAFAYETTE, CA
O'BRIEN LAND COMPANY L.L.C.



ORG1-63
cont.

VISUAL SIMULATION - VIEW 2
CITY VIEWING EVALUATION SITE - #9 CAMINO DIABLO



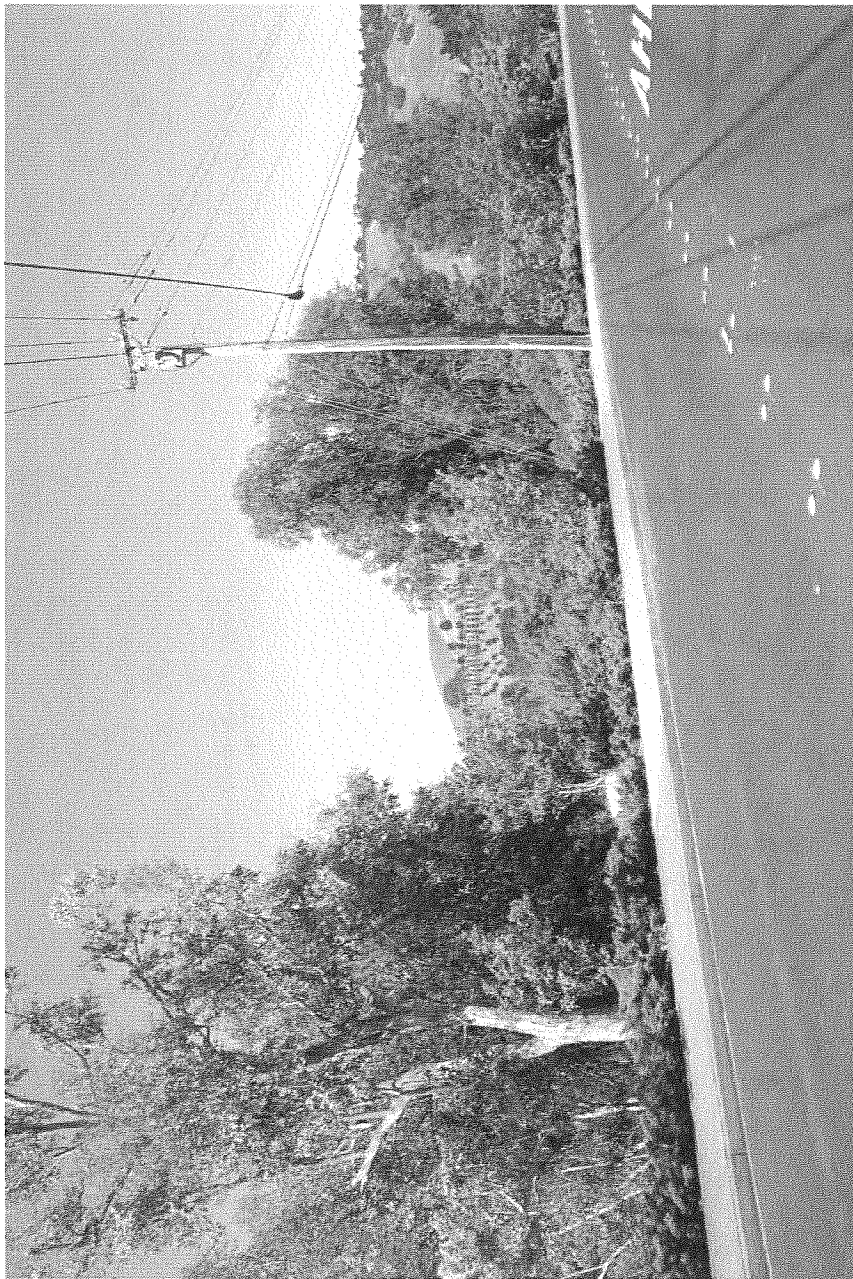
EXISTING

THE TERRACES OF LAFAYETTE
LAFAYETTE, CA
O'BRIEN LAND COMPANY L.L.C.



ORG1-63
cont.

**VISUAL SIMULATION - VIEW 2
CITY VIEWING EVALUATION SITE - #9 CAMINO DIABLO**



PROPOSED - DAY OF COMPLETION



THE TERRACES OF LAFAYETTE
LAFAYETTE, CA
O'BRIEN LAND COMPANY L.L.C.

**ORG1-63
cont.**

VISUAL SIMULATION - VIEW 2
CITY VIEWING EVALUATION SITE - #9 CAMINO DIABLO



PROPOSED - WITH 5 YEARS LANDSCAPING

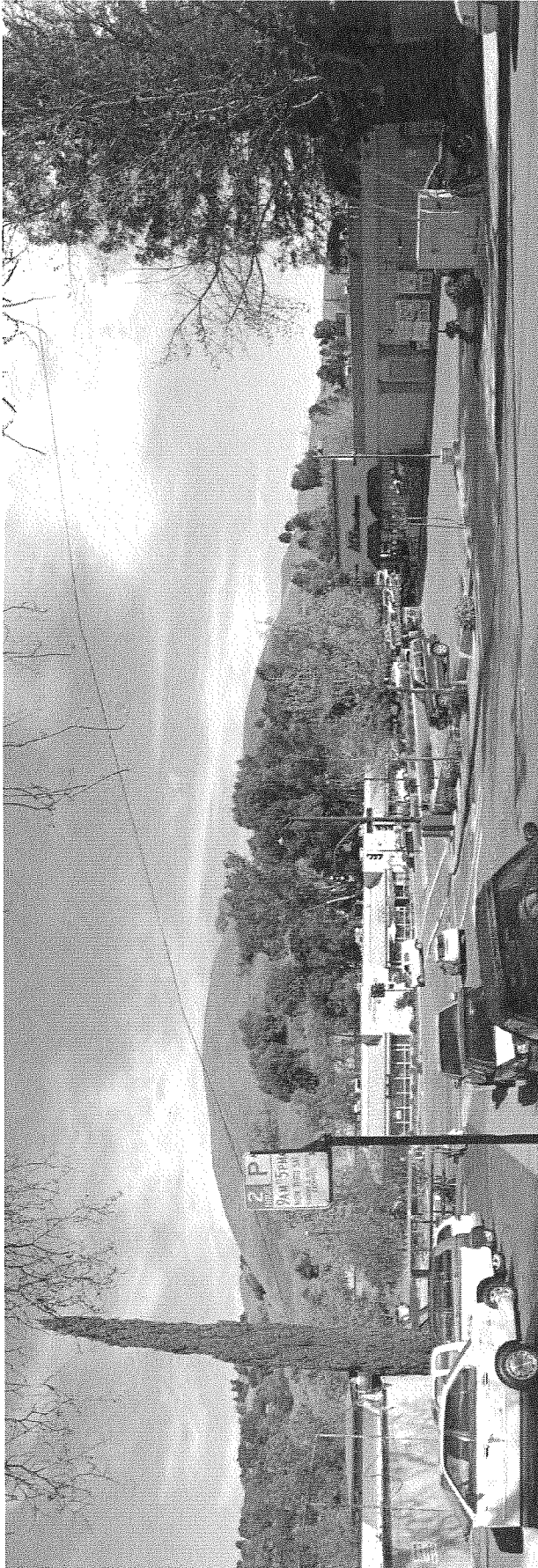


THE TERRACES OF LAFAYETTE
LAFAYETTE, CA

O'BRIEN LAND COMPANY L.L.C.

ORG1-63
cont.

**VISUAL SIMULATION - VIEW 3
CITY VIEWING EVALUATION SITE - #11 CAROL LN.**



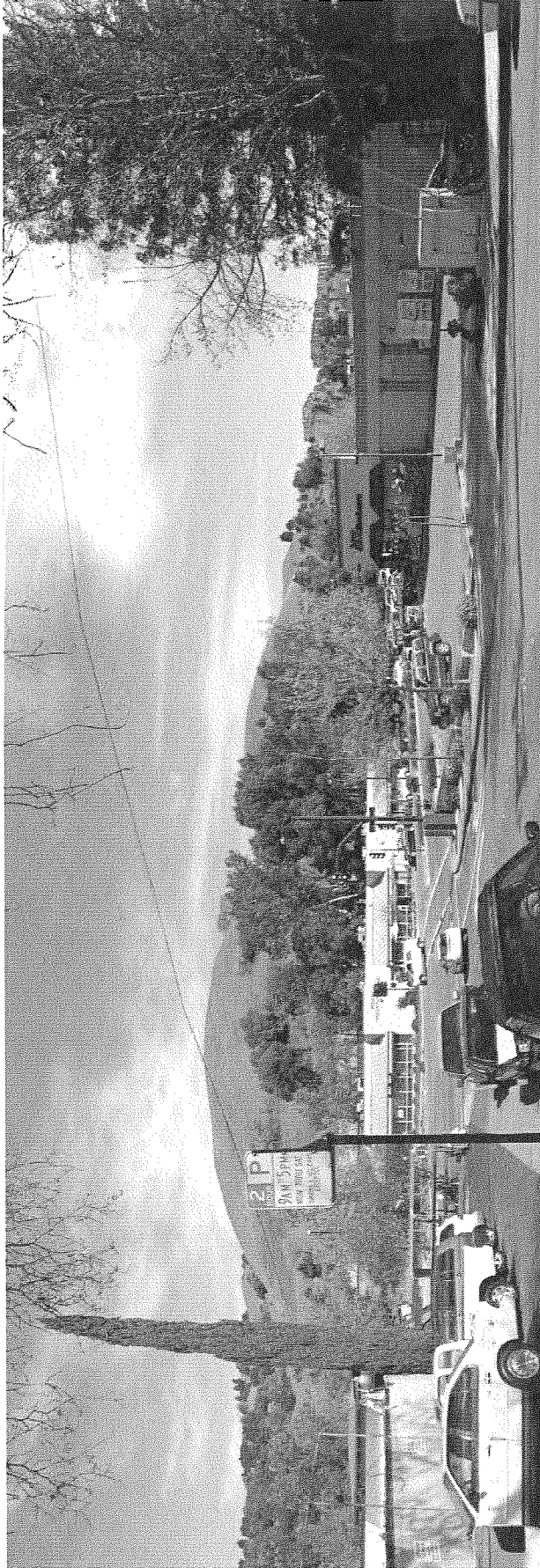
EXISTING

THE TERRACES OF LAFAYETTE
LAFAYETTE, CA
O'BRIEN LAND COMPANY L.L.C. ⁷



**ORG1-63
cont.**

VISUAL SIMULATION - VIEW 3
CITY VIEWING EVALUATION SITE - #11 CAROL LN.



PROPOSED - DAY OF COMPLETION

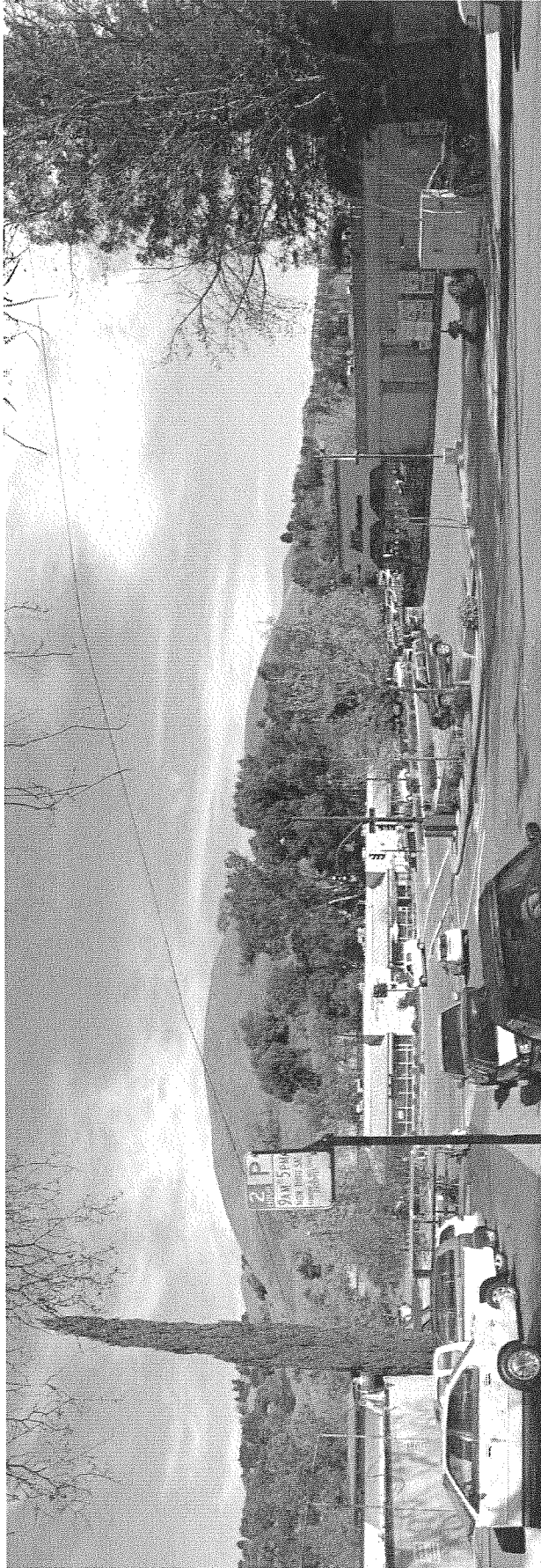
THE TERRACES OF LAFAYETTE
LAFAYETTE, CA
O'BRIEN LAND COMPANY L.L.C.



ORG1-63
cont.



**VISUAL SIMULATION - VIEW 3
CITY VIEWING EVALUATION SITE - #111 CAROL LN.**



PROPOSED - WITH 5 YEARS LANDSCAPING

THE TERRACES OF LAFAYETTE
LAFAYETTE, CA
O'BRIEN LAND COMPANY L.L.C.



**ORG1-63
cont.**

