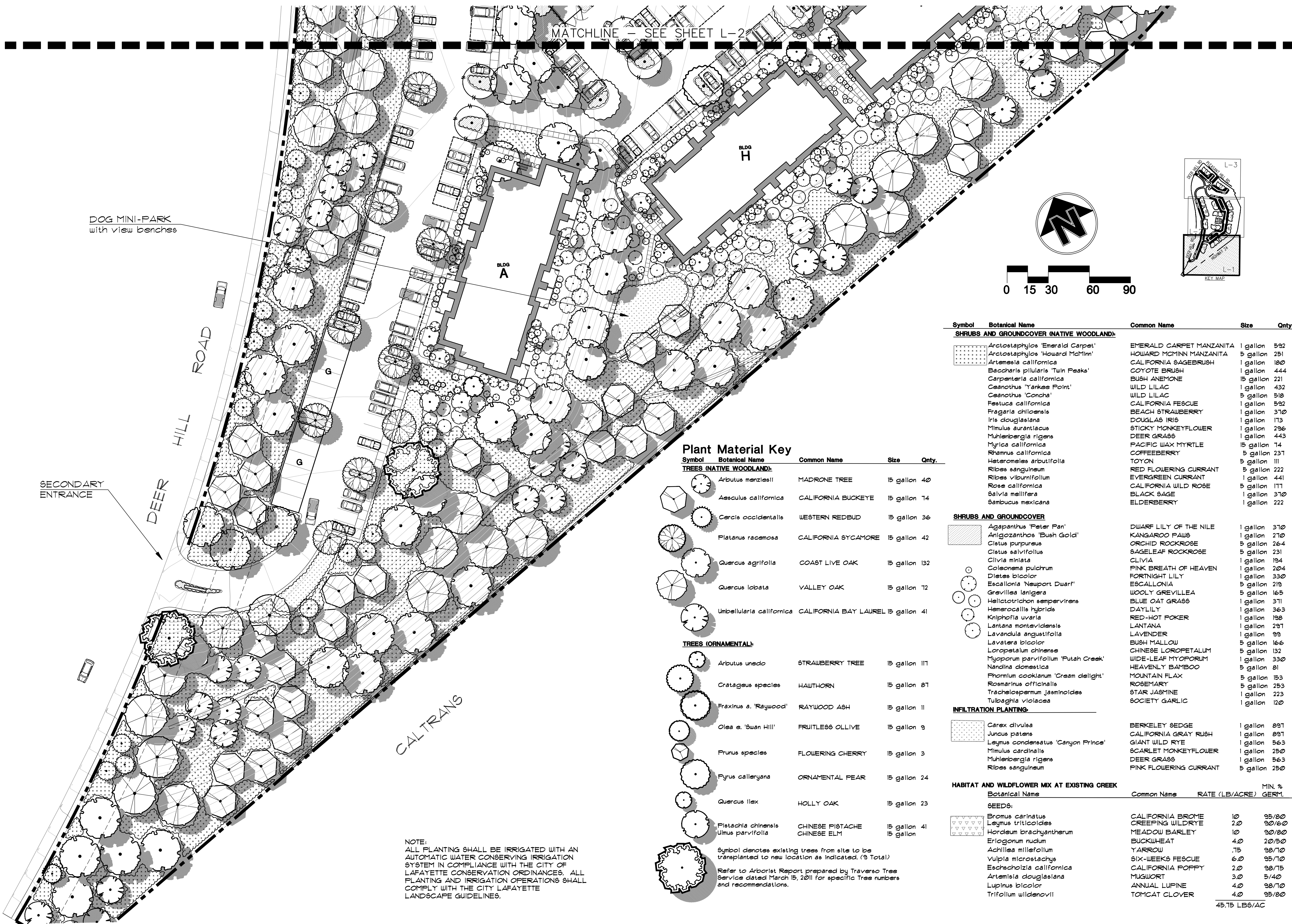


A P P E N D I X D

CONCEPTUAL LANDSCAPING
PLANS





Plant Material Key

Symbol	Botanical Name	Common Name	Size	Qty.
TREES (NATIVE WOODLAND):				
	<i>Arbutus menziesii</i>	MADRONE TREE	15 gallon	40
	<i>Aesculus californica</i>	CALIFORNIA BUCKEYE	15 gallon	74
	<i>Cercis occidentalis</i>	WESTERN REDBUD	15 gallon	36
	<i>Platanus racemosa</i>	CALIFORNIA SYCAMORE	15 gallon	42
	<i>Quercus agrifolia</i>	COAST LIVE OAK	15 gallon	132
	<i>Quercus lobata</i>	VALLEY OAK	15 gallon	72
	<i>Umbellularia californica</i>	CALIFORNIA BAY LAUREL	15 gallon	41
TREES (ORNAMENTAL):				
	<i>Arbutus unedo</i>	STRAWBERRY TREE	15 gallon	117
	<i>Crataegus species</i>	HAWTHORN	15 gallon	87
	<i>Fraxinus a. 'Raywood'</i>	RAYWOOD ASH	15 gallon	11
	<i>Olea e. 'Swan Hill'</i>	FRUITLESS OLLIVE	15 gallon	9
	<i>Prunus species</i>	FLOWERING CHERRY	15 gallon	3
	<i>Pyrus calleryana</i>	ORNAMENTAL PEAR	15 gallon	24
	<i>Quercus illex</i>	HOLLY OAK	15 gallon	23
	<i>Pistachia chinensis</i>	CHINESE PISTACHE	15 gallon	41
	<i>Ulmus parvifolia</i>	CHINESE ELM	15 gallon	

Symbol denotes existing trees from site to be transplanted to new location as indicated. (9 Total)

Refer to Arborist Report prepared by Traverso Tree Service dated March 15, 2011 for specific Tree numbers and recommendations.

SHRUBS AND GROUNDCOVER (NATIVE WOODLAND):

Symbol	Botanical Name	Common Name	Size	Qty.
	<i>Arctostaphylos 'Emerald Carpet'</i>	EMERALD CARPET MANZANITA	1 gallon	592
	<i>Arctostaphylos 'Howard McMin'</i>	HOWARD MCMINN MANZANITA	5 gallon	251
	<i>Artemisia californica</i>	CALIFORNIA SAGEBRUSH	1 gallon	180
	<i>Baccharis pilularis 'Twin Peaks'</i>	COYOTE BRUSH	1 gallon	444
	<i>Carpenteria californica</i>	BUSH ANEMONE	15 gallon	221
	<i>Ceanothus 'Yankee Point'</i>	WILD LILAC	1 gallon	432
	<i>Ceanothus 'Concha'</i>	WILD LILAC	5 gallon	518
	<i>Festuca californica</i>	CALIFORNIA FESCUE	1 gallon	592
	<i>Fragaria chiloensis</i>	BEACH STRAWBERRY	1 gallon	370
	<i>Iris douglasiana</i>	DOUGLAS IRIS	1 gallon	173
	<i>Mimulus aurantiacus</i>	STICKY MONKEYFLOWER	1 gallon	296
	<i>Muhlenbergia rigens</i>	DEER GRASS	1 gallon	443
	<i>Myrica californica</i>	PACIFIC WAX MYRTLE	15 gallon	74
	<i>Rhamnus californica</i>	COFFEEBERRY	5 gallon	237
	<i>Rhamnus arbutifolia</i>	TOYON	5 gallon	111
	<i>Ribes sanguineum</i>	RED FLOWERING CURRANT	5 gallon	222
	<i>Ribes viburnifolium</i>	EVERGREEN CURRANT	1 gallon	441
	<i>Rose californica</i>	CALIFORNIA WILD ROSE	5 gallon	177
	<i>Salvia mellifera</i>	BLACK SAGE	1 gallon	370
	<i>Sambucus mexicana</i>	ELDERBERRY	1 gallon	222

SHRUBS AND GROUNDCOVER:

Symbol	Botanical Name	Common Name	Size	Qty.
	<i>Agapanthus 'Peter Pan'</i>	DWARF LILY OF THE NILE	1 gallon	370
	<i>Anigozanthos 'Bush Gold'</i>	KANGAROO PAWS	1 gallon	270
	<i>Cistus purpureus</i>	ORCHID ROCKROSE	5 gallon	264
	<i>Cistus salviifolius</i>	SAGELEAF ROCKROSE	5 gallon	231
	<i>Clivia miniata</i>	CLIVIA	1 gallon	194
	<i>Coleonema pulchrum</i>	PINK BREATH OF HEAVEN	1 gallon	204
	<i>Dietes bicolor</i>	FORTNIGHT LILY	1 gallon	330
	<i>Escallonia 'Newport Dwarf'</i>	ESCALLONIA	5 gallon	219
	<i>Grevillea lanigera</i>	WOOLY GREVILLEA	5 gallon	165
	<i>Helictotrichon sempervirens</i>	BLUE OAT GRASS	1 gallon	371
	<i>Hemerocallis hybrida</i>	DAYLILY	1 gallon	363
	<i>Kniphofia uvaria</i>	RED-HOT POKER	1 gallon	198
	<i>Lantana montevidensis</i>	LANTANA	1 gallon	297
	<i>Lavandula angustifolia</i>	LAVENDER	1 gallon	99
	<i>Lavatera bicolor</i>	BUSH MALLOW	5 gallon	166
	<i>Loropetalum chinense</i>	CHINESE LOROPETALUM	5 gallon	132
	<i>Myoporum parvifolium 'Putah Creek'</i>	WIDE-LEAF MYOPORUM	1 gallon	330
	<i>Nandina domestica</i>	HEAVENLY BAMBOO	5 gallon	81
	<i>Phormium cookianum 'Cream delight'</i>	MOUNTAIN FLAX	5 gallon	153
	<i>Rosmarinus officinalis</i>	ROSEMARY	5 gallon	253
	<i>Tracheloperum jasminoides</i>	STAR JASMINE	1 gallon	223
	<i>Tulbaghia violacea</i>	SOCIETY GARLIC	1 gallon	120

INFILTRATION PLANTING:

Symbol	Botanical Name	Common Name	Size	Qty.
	<i>Carex divulsa</i>	BERKELEY SEDGE	1 gallon	897
	<i>Juncus patens</i>	CALIFORNIA GRAY RUSH	1 gallon	897
	<i>Leymus condensatus 'Canyon Prince'</i>	GIANT WILD RYE	1 gallon	563
	<i>Mimulus cardinalis</i>	SCARLET MONKEYFLOWER	1 gallon	250
	<i>Muhlenbergia rigens</i>	DEER GRASS	1 gallon	563
	<i>Ribes sanguineum</i>	PINK FLOWERING CURRANT	5 gallon	250

HABITAT AND WILDFLOWER MIX AT EXISTING CREEK

Botanical Name	Common Name	RATE (LB/ACRE)	MIN. % GERM.
SEEDS:			
<i>Bromus carinatus</i>	CALIFORNIA BROME	10	95/80
<i>Leymus triticoides</i>	CREeping WILD RYE	20	90/60
<i>Hordeum brachyantherum</i>	MEADOW BARLEY	10	90/80
<i>Eriogonum nudum</i>	BUCKWHEAT	40	20/50
<i>Achillea millefolium</i>	YARROW	75	98/70
<i>Vulpia microstachya</i>	SIX-WEEKS FESCUE	60	95/70
<i>Echinochloa californica</i>	CALIFORNIA POPPY	20	98/75
<i>Artemisia douglasiana</i>	MUGWORT	30	5/40
<i>Lupinus bicolor</i>	ANNUAL LUPINE	40	98/70
<i>Trifolium wildenowii</i>	TOMCAT CLOVER	40	95/80

45.75 LBS/AC

Loving & Campos Architects Inc.
 RESTRICTED ARCHITECTURAL DRAWINGS

The information, plans, designs, notes and arrangements shown on this drawing are confidential and may not be reproduced in whole or in part without the expressed written permission of LOVING & CAMPOS ARCHITECTS, INC. Drawings noted as Preliminary, Schematic and / or Concept contain information that is conceptual and subject to verification and/or change. The architect makes no claim for accuracy of conceptual information or of information supplied by others.

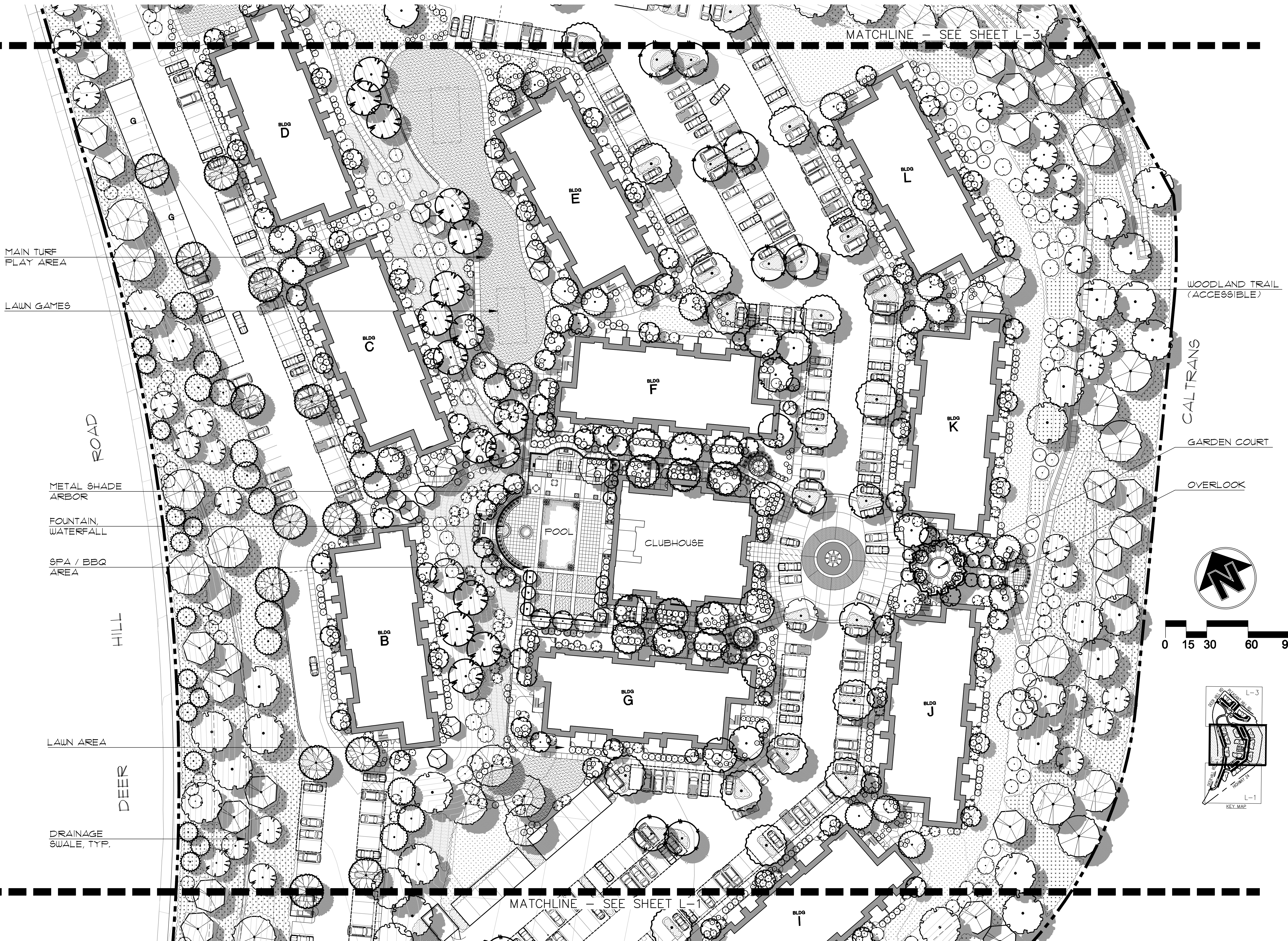
camp & camp associates
 planning & landscape architecture
 email: tc@campandcamp.com

SCALE:
DATE: 3 / 21 / 2011

REVISIONS:
 5 / 6 / 2011
 9 / 21 / 2011

LANDSCAPE PLAN

PROJECT NO. 10050



MAIN TURF PLAY AREA
 LAWN GAMES
 ROAD
 METAL SHADE ARBOR
 FOUNTAIN WATERFALL
 SPA / BBQ AREA
 HILL
 LAWN AREA
 DEER
 DRAINAGE SWALE, TYP.

MATCHLINE - SEE SHEET L-3

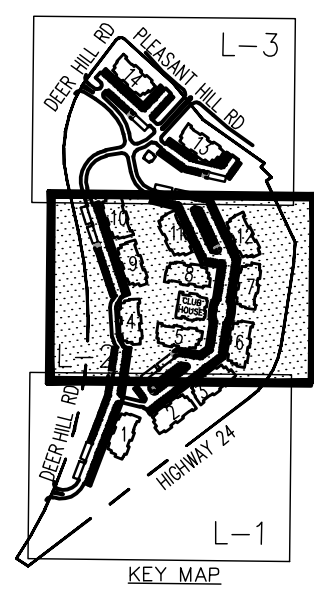
MATCHLINE - SEE SHEET L-1

WOODLAND TRAIL (ACCESSIBLE)

CALTRANS

GARDEN COURT

OVERLOOK



THE TERRACES OF LAFAYETTE
 DEER HILL ROAD, LAFAYETTE, CALIFORNIA

Loving & Campos Architects Inc. RESTRICTED ARCHITECTURAL DRAWINGS

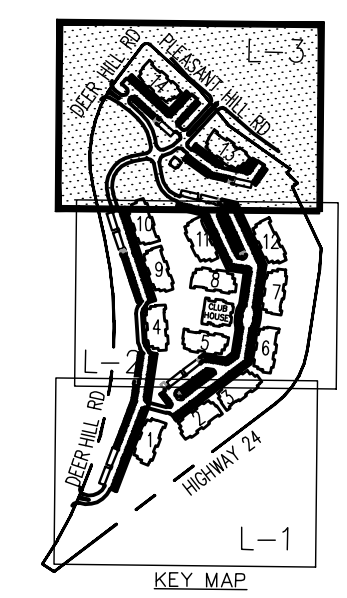
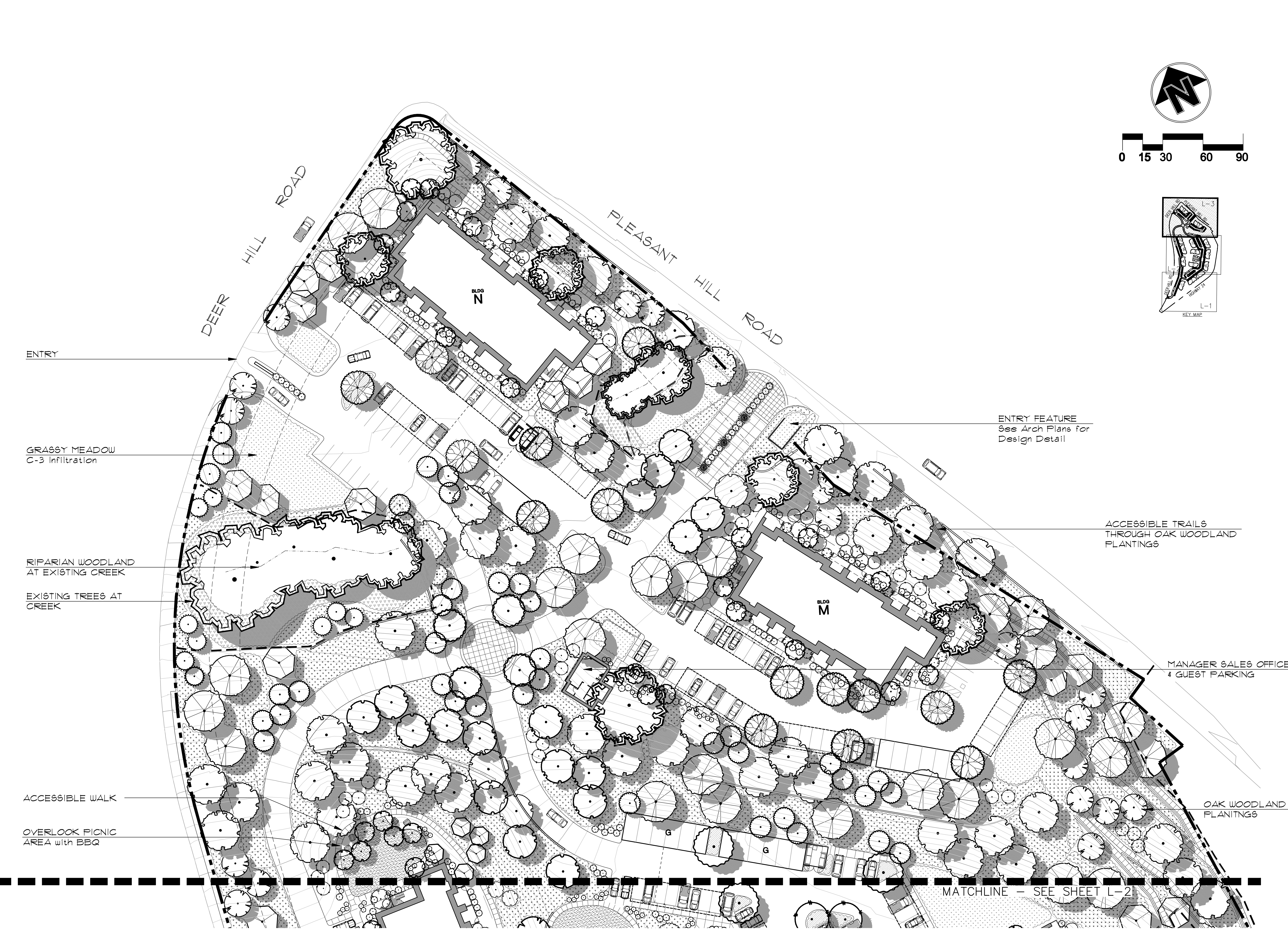
The information, plans, designs, notes and arrangements shown on this drawing are confidential and may not be reproduced in whole or in part without the expressed written permission of LOVING & CAMPOS ARCHITECTS, INC. Drawings noted as Preliminary, Schematic and / or Concept contain information that is conceptual and subject to verification and/or change. The architect makes no claim for accuracy of conceptual information or of information supplied by others.

camp & camp associates
 planning & landscape architecture
 email: tc@campandcamp.com

SCALE:
 DATE: 3 / 21 / 2011
 REVISIONS:
 5 / 6 / 2011
 9 / 21 / 2011

LANDSCAPE PLAN

PROJECT NO. 10050



ENTRY

GRASSY MEADOW
C-3 Infiltration

RIPARIAN WOODLAND
AT EXISTING CREEK

EXISTING TREES AT
CREEK

ACCESSIBLE WALK

OVERLOOK PICNIC
AREA with BBQ

ENTRY FEATURE
See Arch Plans for
Design Detail

ACCESSIBLE TRAILS
THROUGH OAK WOODLAND
PLANTINGS

MANAGER SALES OFFICE
& GUEST PARKING

OAK WOODLAND
PLANTINGS

MATCHLINE - SEE SHEET L-2

THE TERRACES OF LAFAYETTE
DEER HILL ROAD, LAFAYETTE, CALIFORNIA

Loving & Campos Architects Inc.
RESTRICTED ARCHITECTURAL
DRAWINGS

The information, plans, designs, notes
and arrangements shown on this
drawing are confidential and may not
be reproduced in whole or in part
without the expressed written
permission of LOVING & CAMPOS
ARCHITECTS, INC. Drawings noted
as Preliminary, Schematic and / or
Concept contain information that is
conceptual and subject to verification
and/or change. The architect makes
no claim for accuracy of conceptual
information or of information supplied
by others.

**camp & camp
associates**
planning & landscape architecture
email: tc@campandcamp.com

SCALE:
DATE: 3/21/2011
REVISIONS:
5/6/2011
9/21/2011

LANDSCAPE
PLAN

PROJECT NO. 10050