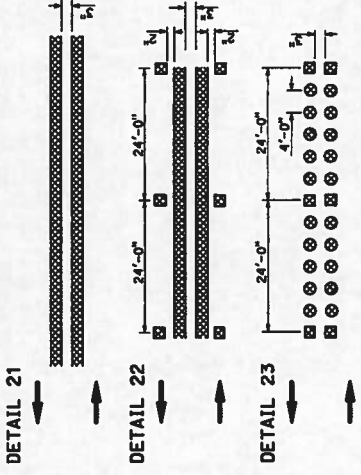


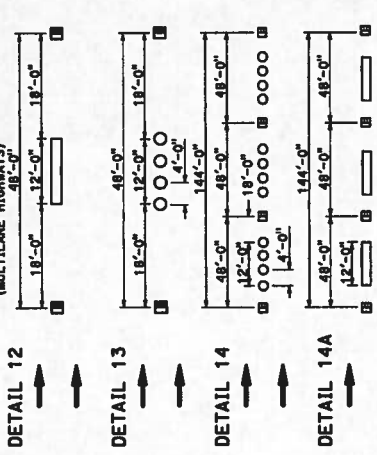
**APPENDIX A**  
**STANDARD PLANS**

COUNTY ROUTE PROJECT SHEET NO. 1 SHEETS  
 REGISTERED CIVIL ENGINEER  
 MAY 20, 2011  
 PLAN APPROVAL DATE  
 THE STATE OF CALIFORNIA BY ITS OFFICE OF  
 PUBLIC WORKS HAS REVIEWED THIS PLAN  
 FOR CONFORMANCE WITH THE STANDARDS  
 AND SPECIFICATIONS FOR THE DESIGN  
 AND CONSTRUCTION OF HIGHWAY  
 PROJECTS OF THIS PLAN SHEET.

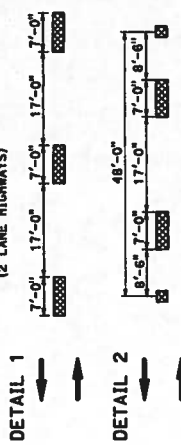
**NO PASSING ZONES-TWO DIRECTION**



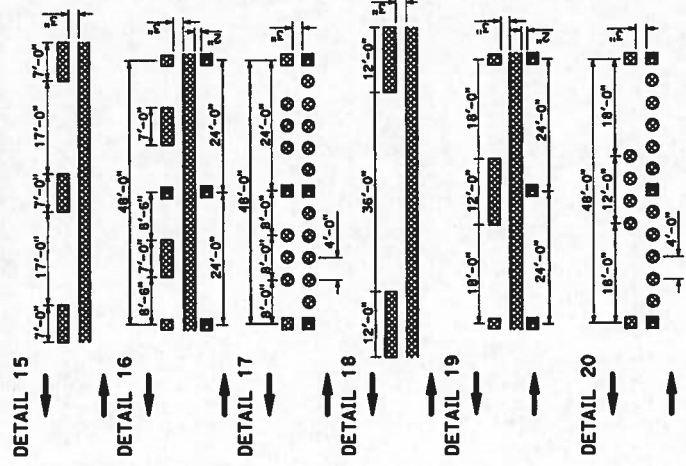
**LANELINES (CONT)**  
(MULTILANE HIGHWAYS)



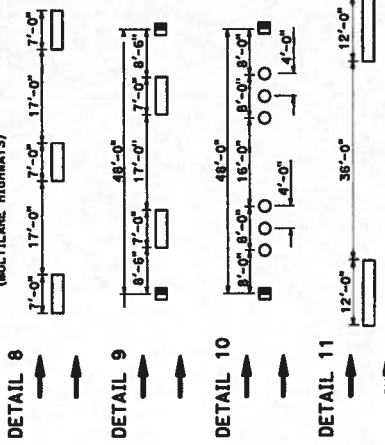
**CENTERLINES**  
(2 LANE HIGHWAYS)



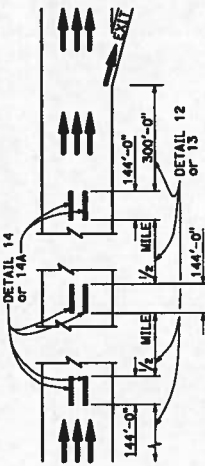
**NO PASSING ZONES-ONE DIRECTION**



**LANELINES**  
(MULTILANE HIGHWAYS)



**TYPICAL LANE LINE DELINEATION  
IN ADVANCE OF EXIT RAMP**

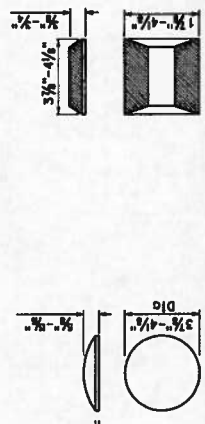


- LEGEND**
- TYPE A WHITE NON-REFLECTIVE
  - ⊙ TYPE AT YELLOW NON-REFLECTIVE
  - ⊗ TYPE C RED-CLEAR RETROREFLECTIVE
  - ⊠ TYPE D TWO-WAY YELLOW RETROREFLECTIVE
  - ⊡ TYPE G ONE-WAY CLEAR RETROREFLECTIVE
  - ⊢ TYPE H ONE-WAY YELLOW RETROREFLECTIVE
- MARKERS**
- 4" WHITE
  - ⊙ 4" YELLOW
- LINES**
- DIRECTION OF TRAVEL

**NOTES**

Detail 14 is to be used in combination with Detail 13. Detail 14A is to be used in combination with Detail 12.

**MARKER DETAILS**



**TYPE A AND TYPE AY TYPE C AND TYPE D TYPE G AND TYPE H**

STATE OF CALIFORNIA  
 DEPARTMENT OF TRANSPORTATION  
**PAVEMENT MARKERS  
 AND TRAFFIC LINES  
 TYPICAL DETAILS**  
 NO SCALE

**A20A**

DATE	COUNTY	ROUTE	TOTAL SHEETS	NO. SHEETS

REGISTERED CIVIL ENGINEER  
 MAY 20, 2011  
 EXPIRES ON \_\_\_\_\_  
 THE STATE OF CALIFORNIA OR ITS OFFICERS  
 AND EMPLOYEES SHALL NOT BE RESPONSIBLE FOR  
 ERRORS OR OMISSIONS ON THIS PLAN SHEET.

**LEGEND**

**MARKERS**

- TYPE AY YELLOW NON-REFLECTIVE
- TYPE D TWO-WAY YELLOW RETROREFLECTIVE
- TYPE H ONE-WAY YELLOW RETROREFLECTIVE

**LINES**

- 4" WHITE
- 4" YELLOW

DIRECTION OF TRAVEL

**MEDIAN ISLANDS**

DETAIL 28

**LEFT EDGELINES (DIVIDED HIGHWAYS)**

DETAIL 24

EDGE OF TRAVELED WAY

DETAIL 25

EDGE OF TRAVELED WAY

DETAIL 25A

EDGE OF TRAVELED WAY

DETAIL 26

EDGE OF TRAVELED WAY

DETAIL 27

EDGE OF TRAVELED WAY

**RIGHT EDGELINES**

DETAIL 27

EDGE OF TRAVELED WAY

DETAIL 27A

DETAIL 27A DELETED

EDGE OF TRAVELED WAY

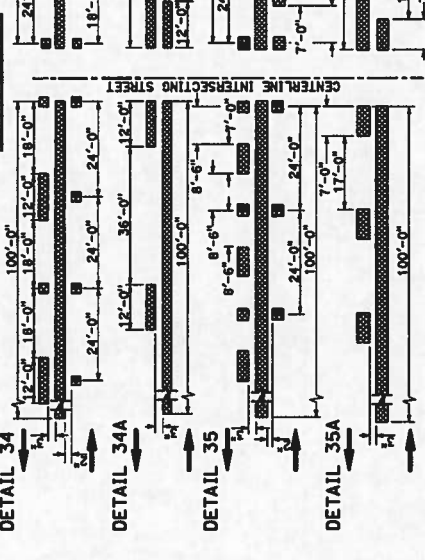
DETAIL 27B

EDGE OF TRAVELED WAY

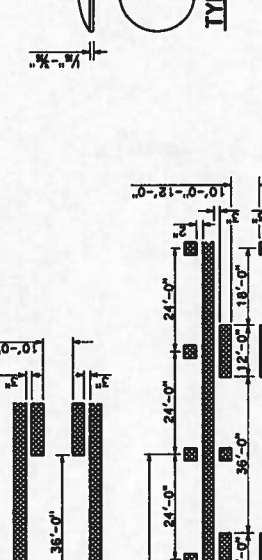
DETAIL 27C

EDGE OF TRAVELED WAY

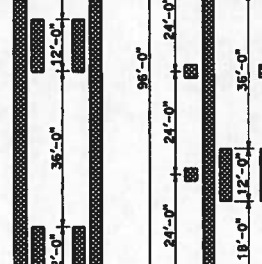
**INTERSECTION TREATMENTS**



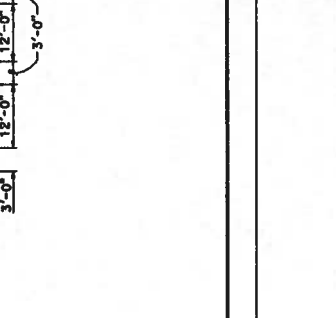
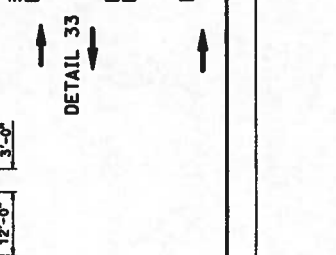
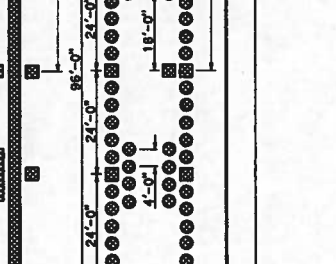
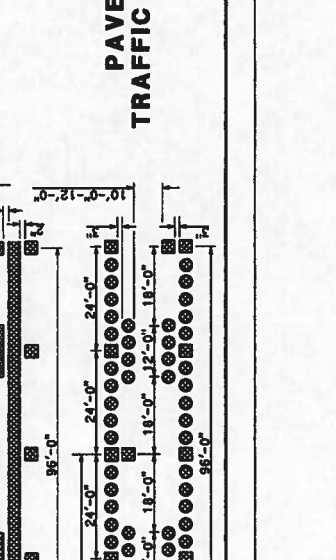
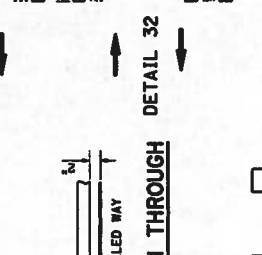
**MARKER DETAILS**



**TWO-WAY LEFT TURN LANES**



**RIGHT EDGELINE EXTENSION THROUGH INTERSECTIONS**



STATE OF CALIFORNIA  
 DEPARTMENT OF TRANSPORTATION

**PAVEMENT MARKERS AND TRAFFIC LINES TYPICAL DETAILS**

NO SCALE

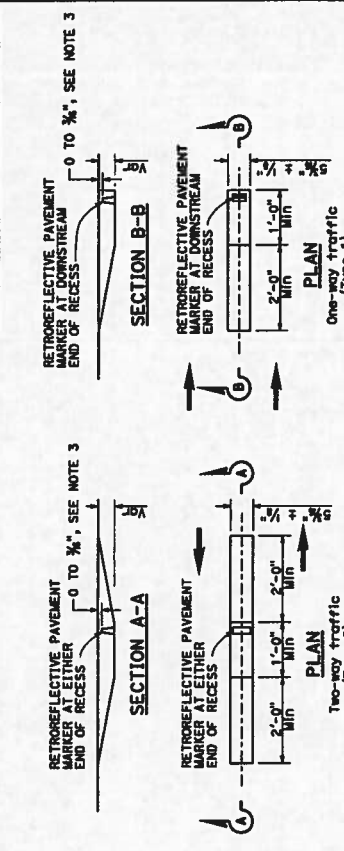
**A20B**

DIST COUNTY ROUTE TOTAL PROJECT SHEET NO. DATE

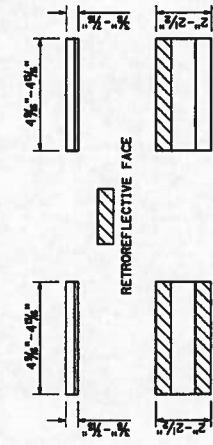
REGISTERED CIVIL ENGINEER  
 MAY 20, 2011  
 STATE OF CALIFORNIA  
 REGISTERED CIVIL ENGINEER  
 NO. 3-31-13

**RECESSED MARKER NOTES:**

- See typical traffic line details for marker patterns to be used with recessed pavement markers. This requires a Type 2 recess.
- The retroreflective pavement marker installations are not to be used for non-recessed installations. The top of pavement markers installed in recesses shall be 0 to 1/8" below the pavement surface.



**RECESS DETAIL FOR RETROREFLECTIVE PAVEMENT MARKER**



**RETROREFLECTIVE PAVEMENT MARKER FOR RECESSED INSTALLATION**

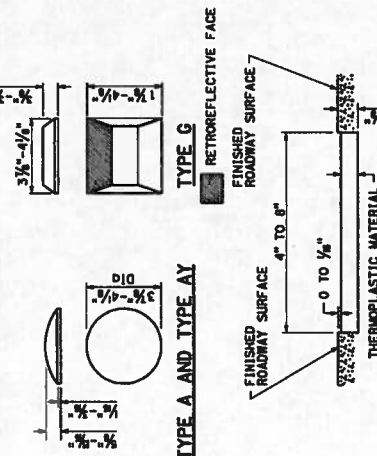
STATE OF CALIFORNIA  
 DEPARTMENT OF TRANSPORTATION  
**PAVEMENT MARKERS AND TRAFFIC LINES TYPICAL DETAILS**  
 NO SCALE

A20D

**LEGEND MARKERS**

- TYPE A WHITE NON-REFLECTIVE
- ⊙ TYPE AY YELLOW NON-REFLECTIVE
- ◻ TYPE G ONE-WAY CLEAR RETROREFLECTIVE
- ▨ 4" YELLOW LINE
- DIRECTION OF TRAVEL

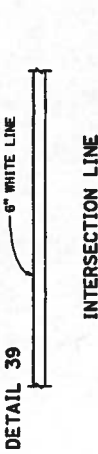
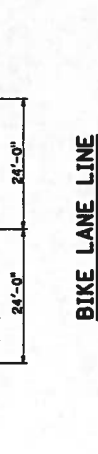
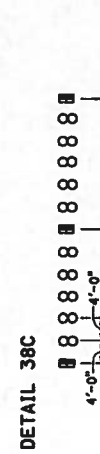
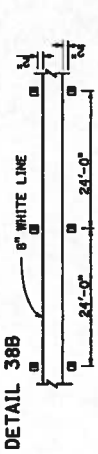
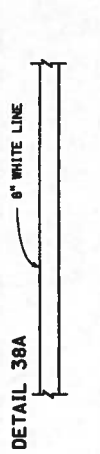
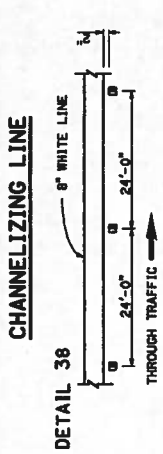
**MARKER DETAILS**



**DETAIL FOR RECESSED THERMOPLASTIC TRAFFIC STRIPE**

**RECESSED THERMOPLASTIC NOTES**

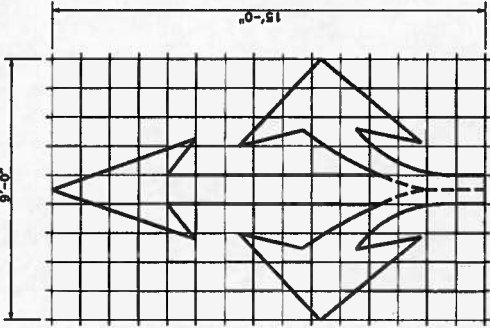
- See typical traffic line details for pavement marking patterns.
- The top of the thermoplastic installed in recessed pavement shall be 0 to 1/8" below the pavement surface.



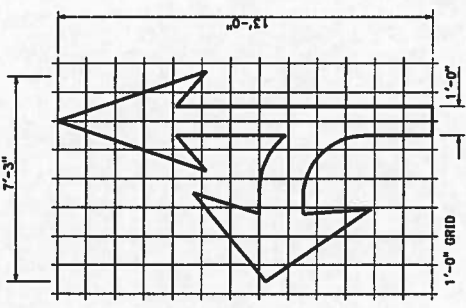
DIST#	COUNTY	ROUTE	POST MILES	SHEET NO.	TOTAL SHEETS

REGISTERED CIVIL ENGINEER  
 REGISTERED PROFESSIONAL ENGINEER  
 STATE OF CALIFORNIA  
 LICENSE NO. 32313  
 EXPIRES 3-31-13

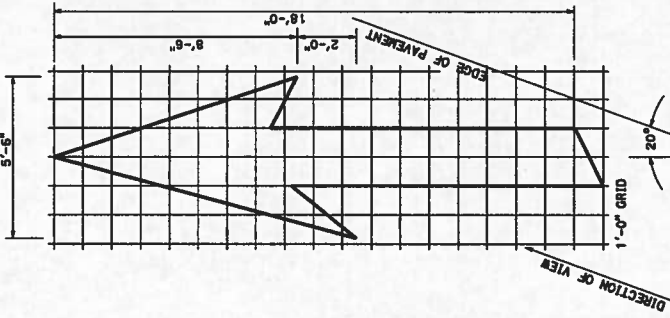
MAY 20, 2011  
 PLEASE APPROVAL DATE  
 THESE DRAWINGS SHALL NOT BE REPRODUCED FOR  
 ANY OTHER PROJECT WITHOUT THE WRITTEN  
 CONSENT OF THE ENGINEER.



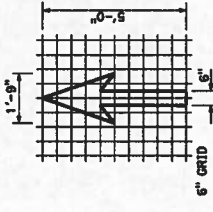
**TYPE VIII ARROW**  
 A=36 f12



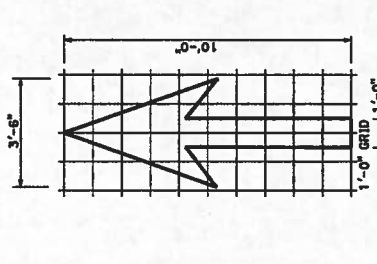
**TYPE VIII (L) ARROW**  
 A=27 f12  
 (For Type III (R) arrow,  
 use mirror image)



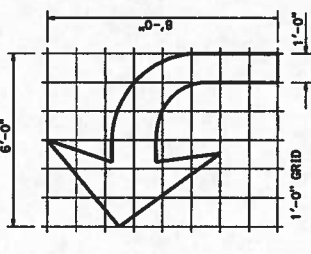
**TYPE IX ARROW**  
 A=42 f12  
 Right lane drop arrow  
 (For left lane,  
 use mirror image)



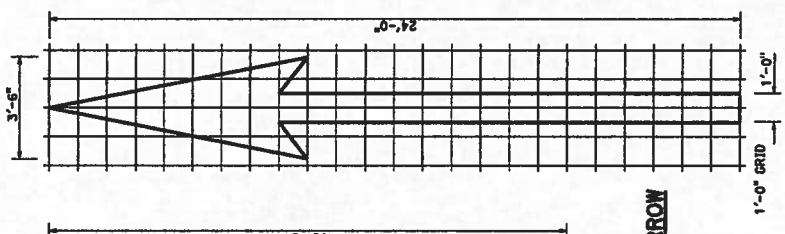
**BIKE LANE ARROW**  
 A=7 f12



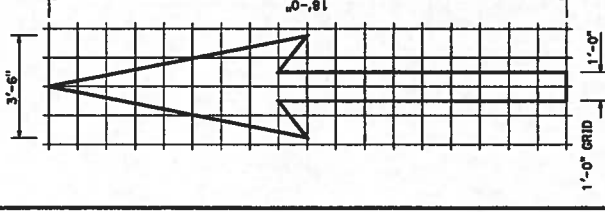
**TYPE I 10'-0" ARROW**  
 A=14 f12



**TYPE IV (L) ARROW**  
 A=15 f12  
 (For Type II (R) arrow,  
 use mirror image)



**TYPE I 24'-0" ARROW**  
 A=31 f12



**TYPE I 18'-0" ARROW**  
 A=25 f12

**NOTE:**  
 Minor variations in dimensions  
 may be accepted by the Engineer.

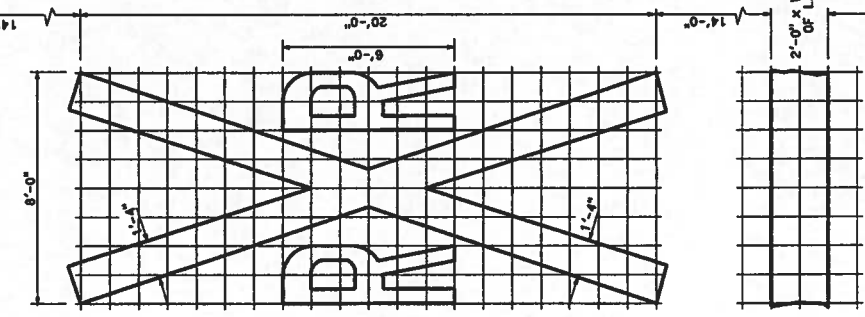
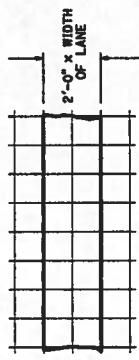
STATE OF CALIFORNIA  
 DEPARTMENT OF TRANSPORTATION  
**PAVEMENT MARKINGS  
 ARROWS**  
 NO SCALE

**A24A**

DIST	COUNTY	ROUTE	SHEET NO.	TOTAL SHEETS

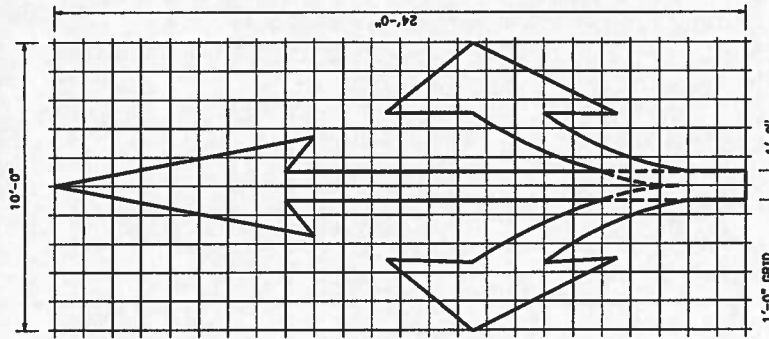
REGISTERED CIVIL ENGINEER  
 REGISTERED PROFESSIONAL LAND SURVEYOR  
 STATE OF CALIFORNIA  
 No. 32313  
 Exp. 3-31-13

MAY 20, 2011  
 DATE OF EXPIRATION OF THIS LICENSE  
 THIS SEAL IS VALID FOR THE STATE OF CALIFORNIA ONLY AND IS NOT VALID FOR ANY OTHER JURISDICTION. IT IS THE RESPONSIBILITY OF THE USER TO VERIFY THE STATUS OF THIS SEAL.

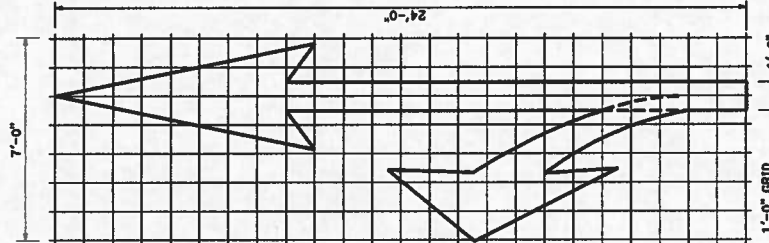


**RAILROAD CROSSING SYMBOL**  
 1'-0" GRID  
 A=70 f+2 \*

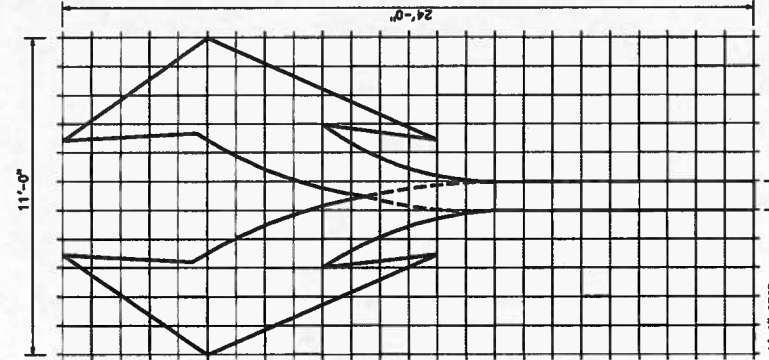
NOTE:  
 \* 70 f+2 does not include the 2'-0" x variable width transverse lines.



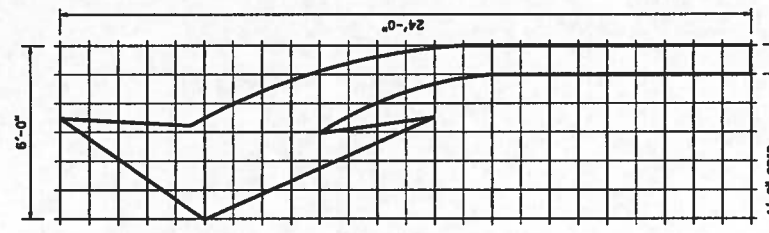
**TYPE I (B) ARROW**  
 A=59 f+2



**TYPE I (L) ARROW**  
 A=45 f+2  
 (For Type I (R) use mirror image)



**TYPE III (B) ARROW**  
 A=73 f+2



**TYPE III (L) ARROW**  
 A=42 f+2  
 (For Type III (R) use mirror image)

STATE OF CALIFORNIA  
 DEPARTMENT OF TRANSPORTATION

**PAVEMENT MARKINGS  
 ARROWS AND SYMBOLS**

NO SCALE

A.24B

Return to Table of Contents

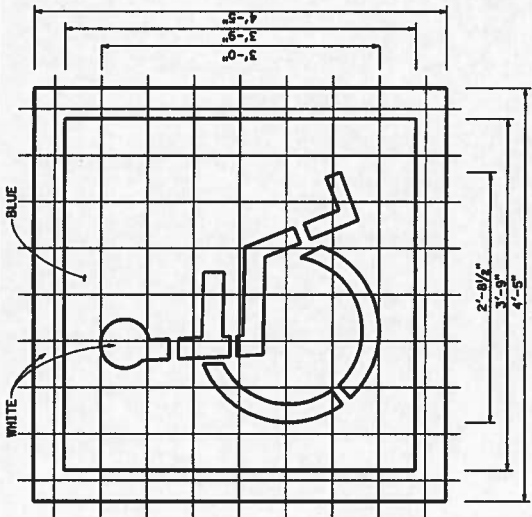
Sheet COUNTY ROUTE TOTAL PROJECT SHEET TOTAL SHEETS

REGISTERED CIVIL ENGINEER

REGISTERED PROFESSIONAL ENGINEER IN THE STATE OF CALIFORNIA  
 CIVIL ENGINEERING  
 No. 32-31-13  
 DATE 03-20-11

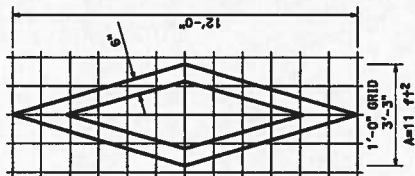
MAY 20, 2011  
 PLEASE APPROVAL DATE

FOR THE STATE OF CALIFORNIA  
 DEPARTMENT OF TRANSPORTATION  
 THE ACCURACY OF THE DIMENSIONS OF THIS PLAN SHEET IS THE RESPONSIBILITY OF THE ENGINEER.

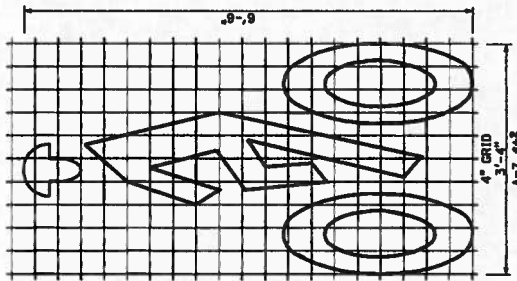


**INTERNATIONAL SYMBOL OF ACCESSIBILITY (ISA) MARKING**

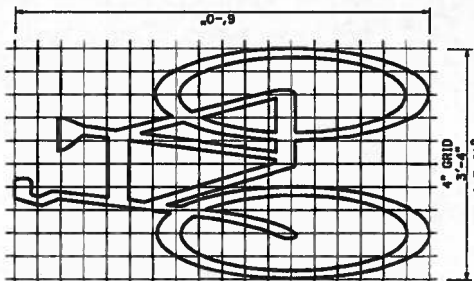
6" GRID  
 A (WHITE) = 9 ft x 14 ft  
 A (BLUE) = 14 ft x 14 ft



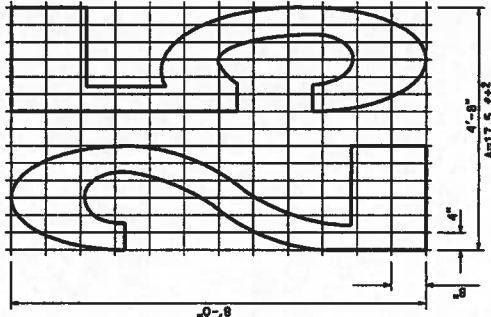
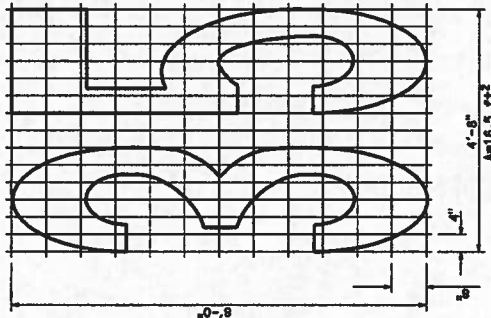
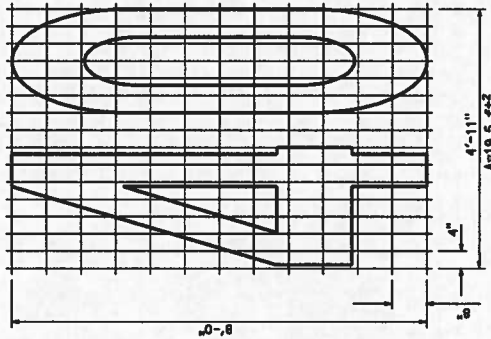
**DIAMOND SYMBOL**



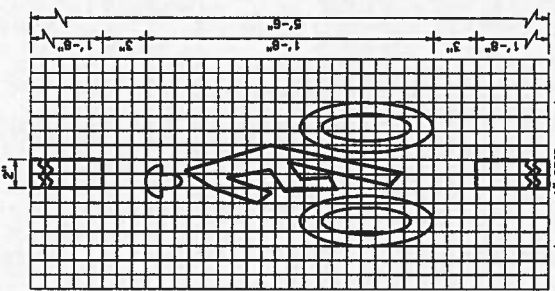
**BIKE LANE SYMBOL WITH PERSON**



**BIKE LANE SYMBOL WITHOUT PERSON**



**NUMERALS**



**BICYCLE LOOP DETECTOR SYMBOL**

**NOTE:**  
 Minor variations in dimensions may be accepted by the Engineer.

STATE OF CALIFORNIA  
 DEPARTMENT OF TRANSPORTATION

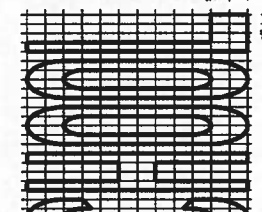
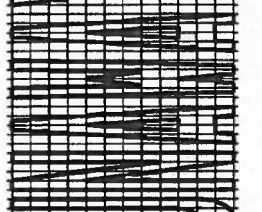
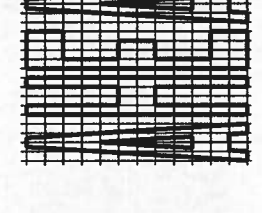
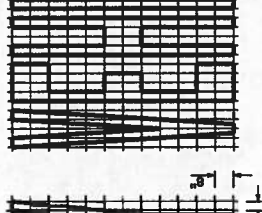
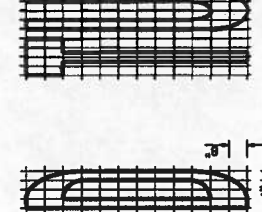
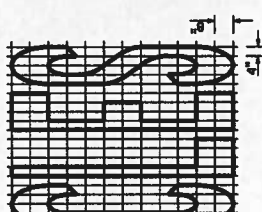
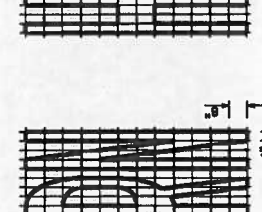
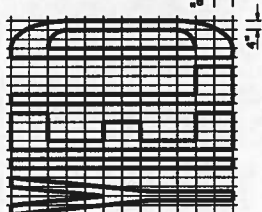
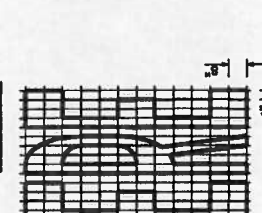
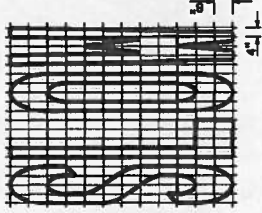
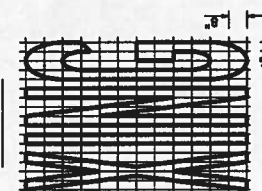
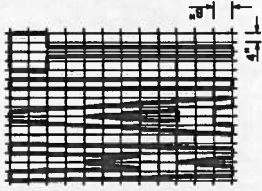
**PAVEMENT MARKINGS SYMBOLS AND NUMERALS**

NO SCALE

**A24C**

DIST. COUNTY ROUTE MILE POINT TOTAL PROJECT SHEET NO. TOTAL SHEETS

**REGISTERED CIVIL ENGINEER**  
 R. S. ...  
 MAY 20, 2011  
 EXPIRES: ...  
 THE STATE SHALL NOT BE RESPONSIBLE FOR THE CONSEQUENCES OF THIS PLAN SHEET.



**NOTES**

1. If a message consists of more than one word, it should read "up", i.e., the first word should be nearest the driver.
2. The space between words should be at least four times the height of the characters for low speed roads, but not more than ten times the height of the characters. The space may be reduced appropriately where there is limited space because of local conditions.
3. Minor variations in dimensions may be accepted by the Engineer.
4. Portions of a letter, number or symbol may be separated by connecting segments not to exceed 2" in width.

**WORD MARKINGS**

ITEM	ft+2	ITEM	ft+2	ITEM	ft+2
XING	21	YIELD	24	BIKE	5
AHEAD	51	SCHOOL	35	SLOW	23
LANE	19	SIGNAL	32	STOP	22
RIGHT	25	TURN	6	LEFT	19
		HERE	26	VEHICLES	42
				PED	18
				COMPACT	10
				RUNWAY	43

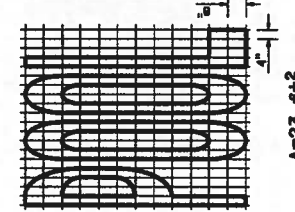
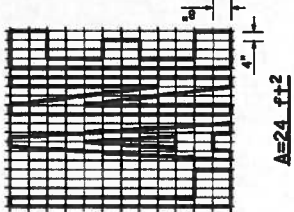
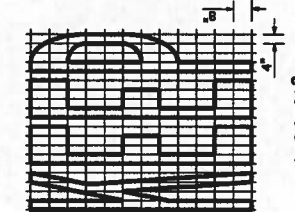
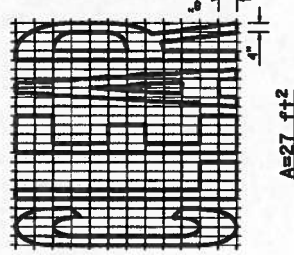
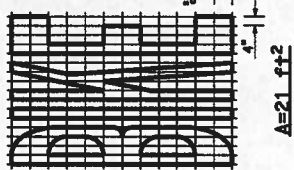
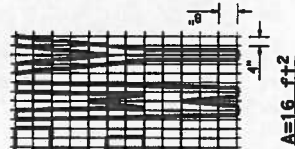
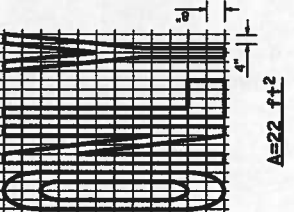
STATE OF CALIFORNIA  
 DEPARTMENT OF TRANSPORTATION  
**PAVEMENT MARKINGS**  
**WORDS**  
 NO SCALE

**A24D**



DIST. COUNTY ROUTE MILE PROJECT SHEET TOTAL SHEETS  
 REGISTERED CIVIL ENGINEER  
 MAY 20, 2011  
 PLANS APPROVAL DATE  
 THE STATE SHALL NOT BE RESPONSIBLE FOR THE ACCURACY OF THE INFORMATION CONTAINED HEREIN.  
 REGISTERED PROFESSIONAL ENGINEER IN THE STATE OF CALIFORNIA  
 EXPIRES 12-31-13

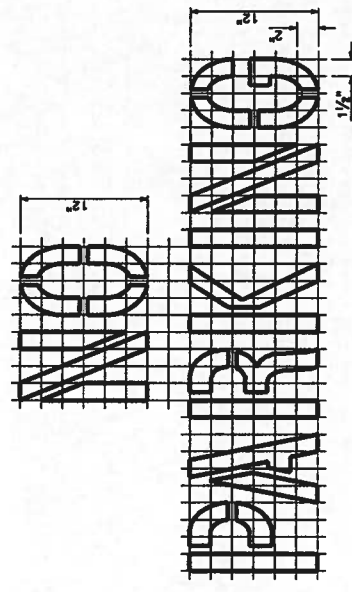
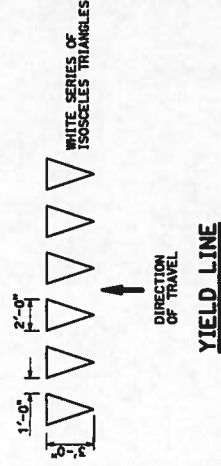
ITEM	FT+2	ITEM	FT+2
LANE	24	NO	14
POOL	25	BIKE	21
CAR	17	BUS	20
CLEAR	27	ONLY	22
KEEP	24	FWY	16



- NOTES:**
- If a message consists of more than one word, it should read "up", i.e., the first word should be nearest the driver.
  - The space between words should be at least four times the height of the letters on speed roads, but not more than ten times the height of the characters on other roads. The spacing should be appropriately varied where there is limited space because of local conditions.
  - Minor variations in dimensions may be accepted by the Engineer.
  - Portions of a letter, number or symbol may be separated by connecting segments not to exceed 2" in width.
  - Crosswalks contiguous to school grounds are to be 1'-0" yellow lines in place of 1'-0" white lines.
  - The words "NO PARKING" pavement marking is to be used for parking facilities. For typical locations of markings, see Standard Plans A90A and A90B.
  - The words "NO PARKING" shall be painted in white letters no less than 1'-0" high on a contrasting background and located so that it is visible to traffic enforcement officials.



**CROSSWALK AND LIMIT LINE**  
See Note 5



STATE OF CALIFORNIA  
DEPARTMENT OF TRANSPORTATION

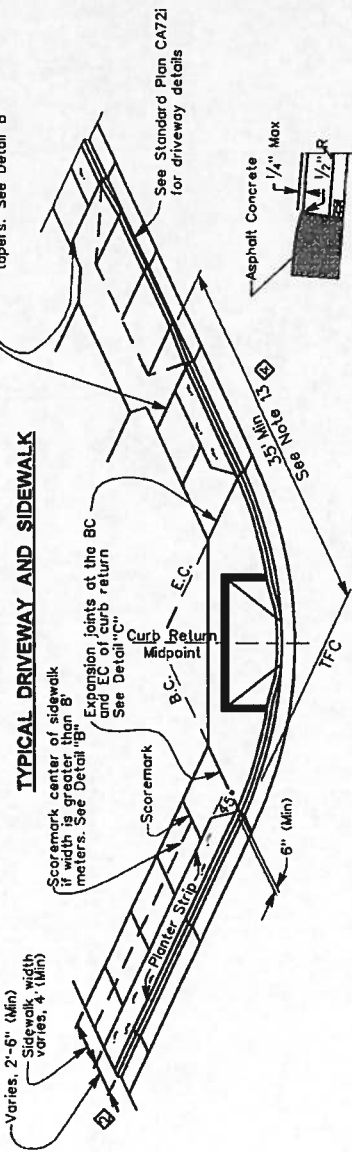
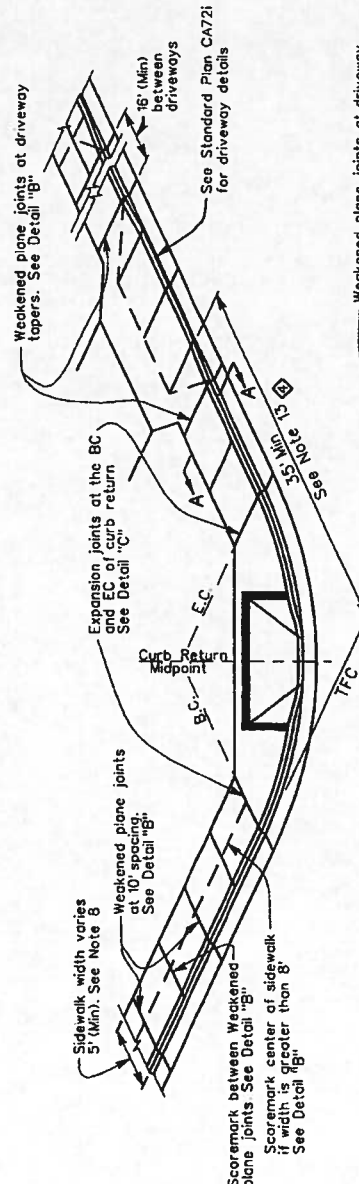
**PAVEMENT MARKINGS  
WORDS AND CROSSWALKS**  
NO SCALE

A24E

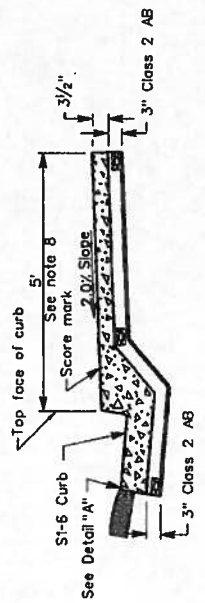
*M. J. HUSSY*  
 PUBLIC WORKS DIRECTOR  
 6/12/07  
 PLANS APPROVAL DATE

REGISTERED PROFESSIONAL ENGINEER  
 MAURICE M. SHUL  
 No. 23204  
 Exp. 12/31/07  
 CIVIL

The County of Contra Costa is the official or agent that is not responsible for the accuracy or completeness of electronic copies of this plan sheet.



TYPICAL SEPARATED SIDEWALK



NOTES:

- Class 3 Portland Cement Concrete (505 lb PC per cubic yard, 1" maximum aggregate) shall be used for all construction detailed on this plan. New curb and adjoining sidewalk shall be constructed monolithically.
- Transverse scoremarks shall be made at 10' intervals on the sidewalk (including the portion in the driveway area) and longitudinal scoremarks shall be made along the centerline of any sidewalk which is 8' or more in width. Weakened plane joints shall be provided at 10' intervals in curb and sidewalk (including the portion in the driveway area) See Detail "B" and "Typical Sidewalk Detail".
- Curb reference stakes shall not be offset more than 3' from the back of curb or more than 2' from the back of the sidewalk.
- Where there is a planter strip between the sidewalk and the curb, the curb in a driveway depression shall be constructed monolithically with the driveway.
- When the street slopes away from a curb, the gutter slope shall match the cross slope of the street.
- Paving at the gutter lip shall conform to "Detail A" except when the street slopes away from the curb, the paving shall match the gutter lip.
- Meter boxes, poles, and fire hydrants locations shall conform to locations shown on Standard Plan CU60i.
- Minimum sidewalk widths are 5'-0" for residential; 6'-6" for multiple zoned; 10'-0" for retail business and commercial areas; 8'-0" in retail and commercial areas where right of way is limited.
- A 3" layer of Class 2 aggregate base or subbase shall be placed under all curb and sidewalk sections unless otherwise noted.
- Expansion joint "Detail C" shall be installed at the BC and EC of all returns and the back of sidewalk at driveways.
- See Standard Plan CA71i for curb details.
- Premolded joint filler material for expansion joints shall conform to Section 51-1.12C "Premolded Expansion Fillers," of the State Standard Specifications.
- 35' is the minimum offset on low volume, low speed residential streets. For higher volume, higher speed roads, the 35' dimension shall increase to comply with Topic 405, "Intersection Design Standards", 405.1 Sight Distance of the California Department of Transportation's, Highway Design Manual.

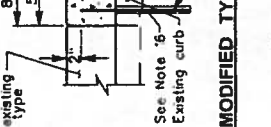
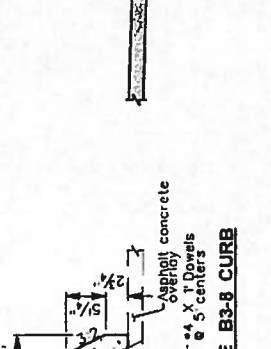
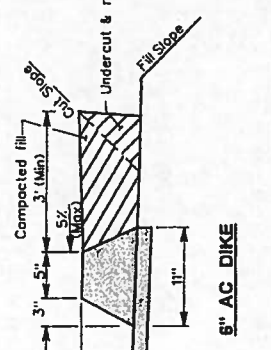
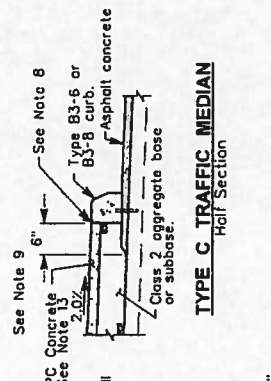
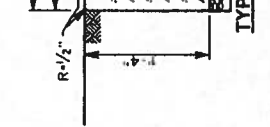
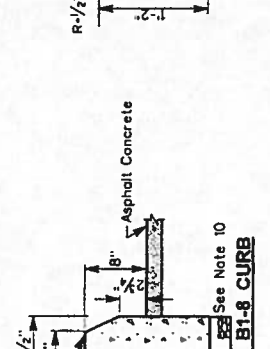
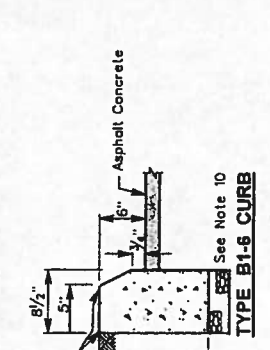
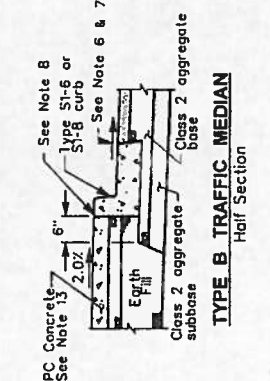
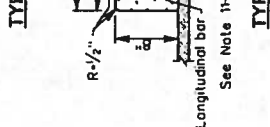
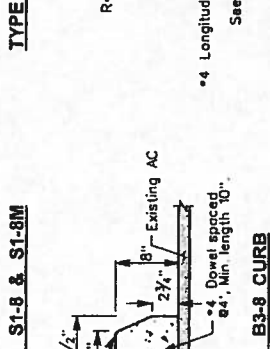
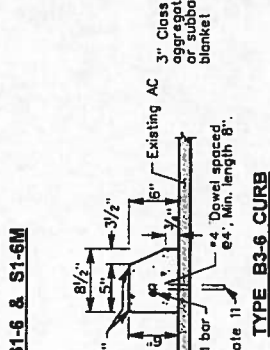
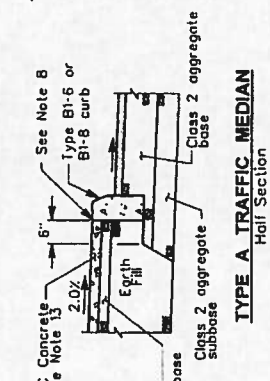
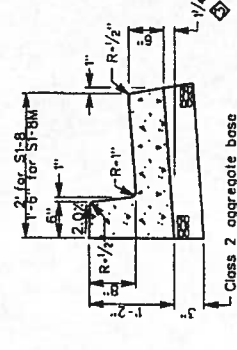
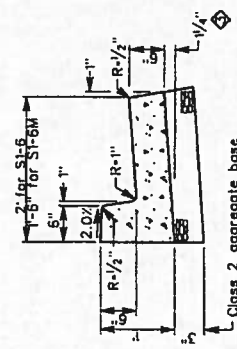
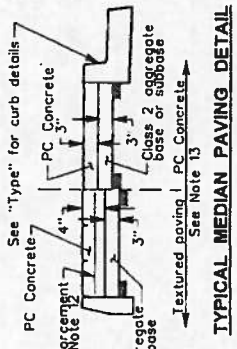
STANDARD PLAN	
COUNTY OF CONTRA COSTA PUBLIC WORKS DEPARTMENT MARTINEZ, CALIFORNIA	
STANDARD SIDEWALK DETAILS	
NO.	DATE
2-02	dated 11-99
6-02	Revised Dimension
7-02	Concrete Spec. Revision
4-07	Driveway Location
4-07	Change in plan reference number
NO. 1	DATE
REVISION DESCRIPTION	BY
Supersedes Standard Plan CA70	P.W.
Revised Dimension	HH
Concrete Spec. Revision	HH
Driveway Location	HH
Change in plan reference number	HH
REVISION DESCRIPTION	BY
SCALE NO. SCALE	DATE: 4-07
DRAWN BY: H.HUSSY	PLAN NO. CA70i
CHECKED BY: M.HOLMQUIST	

*Ch. August 20th, 2002*

**PROFESSIONAL ENGINEER**  
 MAURICE M. SHU  
 No. 23204  
 Exp. 12/31/05  
 CIVIL  
 STATE OF CALIFORNIA

**PUBLIC WORKS DIRECTOR**  
 11/27/2002  
 PLANS APPROVAL DATE

*The County of Contra Costa or its officers or agents shall not be responsible for the accuracy or consistency of electronic copies of this plan sheet.*



- NOTES:**
- Class 3 Portland Cement Concrete (505 lb. PC per cu. yard) shall be used for all concrete construction detailed on this plan.
  - Weakened plane joints shall be provided at 10' intervals on all curbs. See Standard Plan CA70i, "Detail B".
  - Curb reference stakes shall not be offset more than 3' from the back of the curb.
  - Curb removed for driveway construction shall be sawcut at the joint, placed on a 12" wide base, and the full width of the driveway. The entire curb shall be removed between the cut lines.
  - The curb in the depression of the driveway shall be constructed monolithically with the driveway.
  - When the street slopes away from the curb, the gutter slope shall match the cross slope of the street.
  - Paving at the gutter lip shall conform to "Standard Plan CA70i Detail A", except that where the street slopes away from the curb, the paving shall match the gutter lip.
  - Curb may be constructed monolithically with the median paving. When a scoring, chonoring, or other detail is required, "Detail B" shall be provided along the back of the curb.
  - Type "B3" curb shall be used only when placed on an existing or overlaid pavement.
  - A 3" layer of Class 2 aggregate base or subbase shall be placed under Type "B1" curb unless otherwise noted.
  - Place dowels in 1" diameter drilled hole filled with 1:1 sand grout. Omit dowels when curb is extruded.
  - Reinforcement shall be #4 bars at 18" OC each way or 6" x 6" x 8" x 8" 10 gage welded wire fabric.
  - Median paving may be "textured" as specified by the Public Works Department. See "Typical Median Paving Detail".
  - Width of asphalt concrete path shall be a minimum of 4' measured from top face of curb.
  - All new curb which conforms to existing facilities shall be doweled as per Standard Plan CA74i.
  - Dowels shall be placed in a 1" diameter drilled hole filled with 1:1 sand cement grout.

COUNTY OF CONTRA COSTA  
 PUBLIC WORKS DEPARTMENT  
 MARTINEZ, CALIFORNIA  
 STANDARD PLAN

**MEDIAN, CURB AND AC DIKE DETAILS**

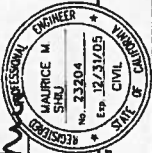
SCALE: NO SCALE  
 DATE: 11-02

DRAWN BY: H. HUSSEY  
 CHECKED BY: M. HOLMESWORTH

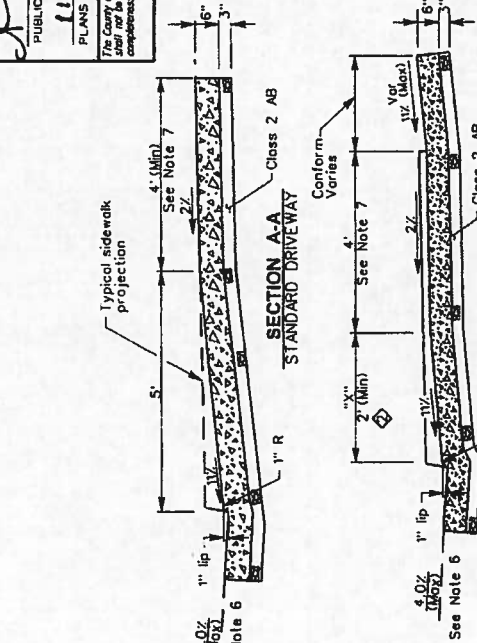
NO. DATE REVISION DESCRIPTION

2-02	Supersedes Standard Plan CA71 dated 11-99	P.W.
7-02	Concrete Spec. Revision	I.H.
11-02	Corrected Dimension	

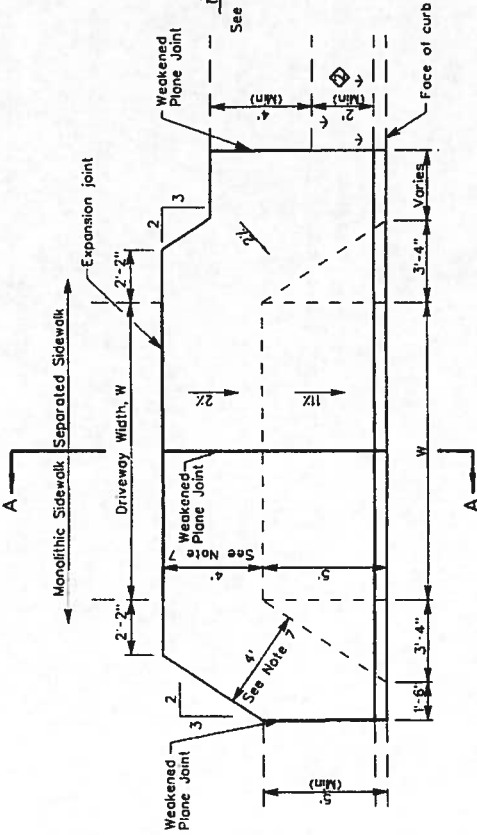
BY CA71i



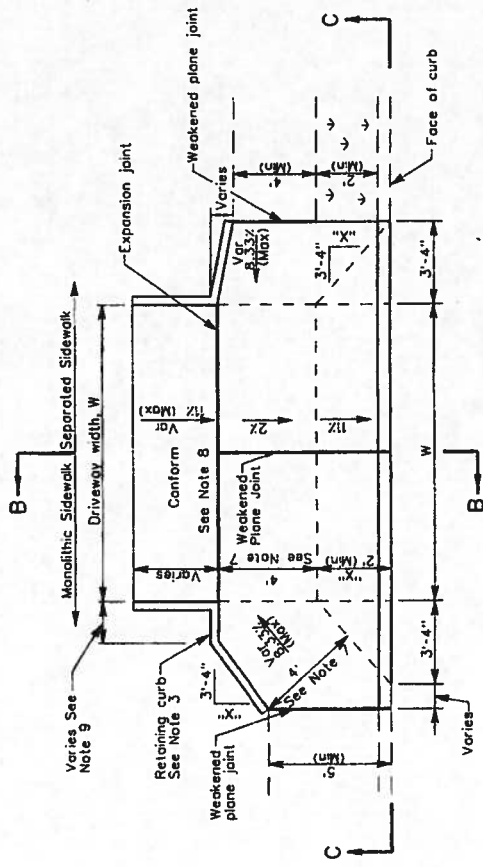
*Maurice M. Shuj*  
 PUBLIC WORKS DIRECTOR  
 PLANS APPROVAL DATE: 11/27/2002  
 The County of Contra Costa or its officers or agents shall not be responsible for the accuracy or completeness of electronic copies of files from a server.



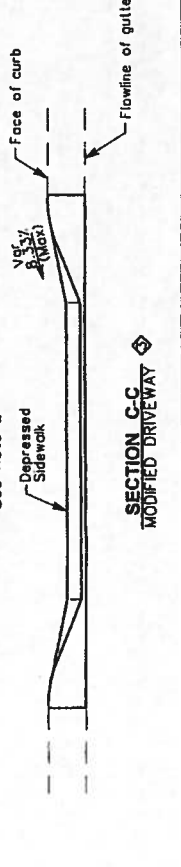
**NOTES:**  
 1. New depressed curb and driveway ramps shall be constructed monolithically.  
 2. The modified driveway may be used when approved by the Public Works Department. "X" shall be as large as possible.  
 3. Retaining curbs and driveway conforms as required by the Public Works Department.  
 4. For depressed driveways (section B-B) the sidewalk shall be a minimum of 3/8" (1"x2") above the gutter flowline grade. Depth of gutter flows shall be calculated and compared to proposed depressed sidewalk elevations during design.  
 5. See Standard Plan CA70i for weakened plane joint expansion joint, and scoremark details.  
 6. If pavement cross slope exceeds 4.0%, the modified driveway shall be used with the slope of the driveway ramp reduced such that the difference in slope of the driveway ramp and the slope of a line between the gutter and a point on the roadway 5' from gutter flowline shall not exceed 1/8". Retardant shall be applied to the driveway ramp. Other details shall be modified as approved by the Public Works Department.  
 7. Minimum width of clear passage shall be 4' with a 2% cross slope. Where right of way restrictions, natural barriers or other restrictions create an unreasonable hardship, the clear width may be reduced to 3' with a 2% cross slope, with approval of the Public Works Department.  
 8. Acquisition of construction easement may be necessary where right of way is limited to construct conform.  
 9. Dimension is 18" for a sidewalk width of 4', 23" for a sidewalk width of 5', and 14" for a sidewalk width of 3'.



**STANDARD DRIVEWAY RAMP**



**MODIFIED DRIVEWAY RAMP**



**SECTION C-C MODIFIED DRIVEWAY**

COUNTY OF CONTRA COSTA  
 PUBLIC WORKS DEPARTMENT  
 MARTINEZ, CALIFORNIA  
 STANDARD PLAN  
**DRIVEWAY RAMP DETAILS**

NO.	DATE	REVISION DESCRIPTION	BY
2-02		Supersedes Standard Plan CA72 dated 11-99	P.W.
5-02		Revised Dimension 3' to 2' & insetwork	HH
8-02		Added Section C-C	P.W.

SCALE: NO. SCALE  
 DRAWN BY: H. HAUSSEY  
 CHECKED BY: M. HOLLINGSWORTH  
 DATE: 2-02  
 PLAN NO. **CA72i**

**APPENDIX B**

**WASTE MANAGEMENT PLAN  
AND  
WASTE ASSESSMENT FORM**

Special Provisions

**WASTE ASSESSMENT FORM**

*(To be filled out and submitted to the Engineer before commencing demolition work)*

The table below lists debris materials that are routinely generated during construction or demolition. Identify the materials that you estimate will be recycled, salvaged, or landfilled from your project site and the handling procedure, hauler and/or destination of each material type.

Material Type	Identify Materials (I)			Handling Procedure, Hauler, or Final Destination of Material
	Recycle	Salvage	Landfill	
Asphalt				
Brick				
Concrete				
Dirt/Clean Fill				
Masonry				
Metals (steel, brass, aluminum, copper, etc.)				
Rock/Stone				
Vegetative Debris				
Wood/Lumber				
Other:				
Garbage				

Please sign and date attesting that the above information is true and correct to the best of your knowledge, that you acknowledge that 40% of your contract retention may be forfeited to the City for failure to meet the 50 percent diversion requirement, and that you are responsible for the actions of your subcontractors or other agents with regard to the diversion requirement.

CONTRACTOR NAME: \_\_\_\_\_

SIGNATURE: \_\_\_\_\_ DATE: \_\_\_\_\_

Special Provisions

**WASTE ASSESSMENT SUMMARY REPORT FORM**

*(To be filled out upon project completion)*

Complete the table below by indicating what was actually done with all the C&D materials from the project and the quantities (by weight) that were recycled, salvaged, or landfilled. All C&D materials must be accounted for whether or not they were recycled or taken to the landfill. Attach receipts and weight tags from all recyclers and landfill locations identifying, 1) date, 2) project number, 3) material type, 4) if materials were recycled, salvaged, or landfilled, and 5) weight of load(s).

Material Type	Identify Materials (lb)			Handling Procedure, Hauler, or Final Destination of Material
	Recycle	Salvage	Landfill	
Asphalt				
Brick				
Concrete				
Dirt/Clean Fill				
Masonry				
Metals (steel, brass, aluminum, copper, etc.)				
Rock/Stone				
Vegetative Debris				
Wood/Lumber				
Other:				
Garbage				

Please sign and date attesting that the above information is true and correct to the best of your knowledge, that you acknowledge that 40% of your contract retention may be forfeited to the City for failure to meet the 50 percent diversion requirement.

CONTRACTOR NAME: \_\_\_\_\_

SIGNATURE: \_\_\_\_\_ DATE: \_\_\_\_\_

Special Provisions

RECEIPT FOR MATERIALS RECYCLED

(To be filled out by receiver only if facility does not issue an itemized receipt)

Company or Individual Receiving Material: (Business stamp is acceptable)

Company:			
Address:			
City:			
Zip:			
Phone:			
Facility/Individual Type: (Circle one)      Recycler      Salvager      End User			
Facility Attendant Signature: (Required)			

Construction/Demolition Company: (Business stamp is acceptable)

Company:	
Address:	
City:	
Zip:	
Phone:	Contact:

Materials Received:

Material Type	Amount <i>(specify in cubic yards, lbs, or tons)</i>	Cost <i>(or payment if applicable to service)</i>	Intended Use of Material Received <i>(circle one)</i>	Date Received or Picked Up
			Recycle      Reuse Salvage      Landfill	
			Recycle      Reuse Salvage      Landfill	
			Recycle      Reuse Salvage      Landfill	
			Recycle      Reuse Salvage      Landfill	

Thank you for recycling.



## **APPENDIX C**

### **STAGING AREA LOCATION AND LIMITS**



RIGHT OF WAY

9 FEET BACK OF SIDEWALK TO R/W

43 FEET LIGHT POLE TO R/W

STAGING AREA

RIGHT OF WAY

98 FEET BACK OF SIDEWALK TO R/W AS A PROJECTION OF CROSSWALK LINE

RIGHT OF WAY

108 FEET BACK OF SIDEWALK TO R/W

MOUNT DIABLO BOULEVARD

EL NIDO RANCH ROAD



## **APPENDIX D**

### **PROJECT PLANS**

**See note on following page**

**NOTE:**

**PROJECT PLANS**

**The Plans for this project have been bound (as 11"x17" sheets) into the printed bid documents as Specifications Appendix D, but have not been included in this electronic website version.**

**Instructions for obtaining the plans are given below:**

**To obtain a link for viewing and downloading the 11"x17" project plans:**

Please send your contact information (including phone and fax numbers) via email to [tkain@ci.lafayette.ca.us](mailto:tkain@ci.lafayette.ca.us) or via fax to (925) 284-3169 Attn: Engineering, so that your company will be included in the Planholders List and will receive any Addenda as they become available.

**To obtain a printed set of plans & specifications:**

These are available for purchase at the City of Lafayette City Offices, 3675 Mt. Diablo Blvd., Suite 210, Lafayette, CA 94549. Cost of the complete plans and specs is \$10.00 per set. To have them sent to you, please provide your FedEx or OnTrac account number, or add \$7.00 per set to cover mailing.

## **APPENDIX E**

### **RESIDENT NOTIFICATION LETTERS**

- Letter #1 -- Chip Seal Only Streets
- Letter #2 -- Cape and Slurry Seal Streets



City Council

Mike Anderson, Mayor  
Don Tatzin, Vice Mayor  
Brandt Andersson, Council Member  
Mark Mitchell, Council Member  
Traci Reilly, Council Member

Dear Resident:

\_\_\_\_\_, under contract with the City of Lafayette, will be performing stop-gap maintenance repairs on your street. This work will be done in two distinct phases. Please see work schedule on the back of this notice indicating what work is scheduled for your street. The hours of construction will be from 8:00 AM to 5:00 PM, Monday through Friday. This work will be done in two distinct phases. The first will consist of filling potholes and placing a layer of "skin patch" pavement over major depressions in the road. This will be followed by a chip seal where a mat of rubberized liquid asphalt and half-inch rock chips will be applied to the entire road surface. The treatment is intended to fill the existing cracks in the street and provide a new wearing surface, thereby preserving the existing condition of the road until such time when it can be reconstructed. Please be aware that this is not a resurfacing of the road, and the finished surface will have a rough texture and may have a salt and pepper appearance. Existing dips and undulations in the driving surface will likely remain after the treatment.

In order to provide the City and its residents with a better looking and longer lasting road, as well as provide the workers with a safe work environment, we ask that traffic closures be observed. During the pothole and skin patch phase of work the streets will be open to traffic, however, on street parking will not be permitted. During the chip seal process the roads will be closed to traffic for approximately 2 hours. Access to properties will be restricted during this time as non-emergency vehicles will not be permitted to drive across or on the wet slurry. The City will make arrangements for access by emergency vehicles. **Please note that if you live off a street that will receive a chip or slurry seal treatment your access will also be restricted.** In the few days immediately following the chip seal, signs will be posted to advise motorists to reduce speed to avoid kicking up the loose rock chips that would be expected on the roadway.

Barricades and traffic cones will be placed to prevent vehicles from entering the wet areas. Please do not go around the traffic control devices; chip seal is a tar-like substance that can splash onto the sides of vehicles as well as track onto other surfaces such as driveways and sidewalks if driven through or walked upon while wet. If you do have oil on something, simple dish soap and water will clean the area if caught before the oil has had time to dry. Otherwise we recommend a citrus solvent-type cleaner.

Notification and no parking signs will be placed on the road a minimum of 3 days prior to the start of each phase of work. These signs will provide the roadwork dates when parking on the street will not be allowed. It is very important that our contractor's crews have access to the entire street. Please note that vehicles parked on the street blocking construction activities will be towed at the owners' expense. In order to sweep excess loose rocks after placement, we request that you park off the chip-sealed streets for two days following the placement of the chip seal.

**In the event the contractor is unable to perform chip or slurry seal work on your street on the scheduled day project information signs at the entrance to your street will be updated to provide the new date and times for the work.**

If you have any questions regarding these access restrictions, please contact me at (925) 299-3247.

Sincerely,  
Matt Luttrupp, Associate Engineer City of Lafayette

Street	Pavement Repairs	Chip Seal
<b>Woodside Court</b> Glorietta Boulevard to End		
<b>Old Millstone Lane</b> Las Huertas Road to End		
<b>Anita Court</b> Janet Lane to End		
<b>Warner Court</b> Springbrook Road		
<b>East Terrace</b> Springbrook Road		
<b>Glenside Circle</b> Glenside Drive to Glenside Drive		
<b>Sharon Court</b> Burton Drive to End		
<b>Gold Court</b> Burton Drive to End		
<b>Antonio Court</b> Lucas Drive to End		
<b>Lucas Circle</b> Lucas Drive to End		
<b>Lancaster Drive</b> Lucas Drive to Somerset Drive		
<b>Crofton Court</b> Lancaster Drive to End		
<b>Kingsley Place</b> Somerset Drive to End		
<b>West Lowell Lane</b> Silverado Drive to End		
<b>Marsha Place</b> Silverado Drive to End		
<b>Silverado Drive</b> Bradbury Drive to End		
<b>McBride Drive (North)</b> Bradbury Drive to End		
<b>Green Acres Court</b> McBride to End		
<b>McBride Drive (South)</b> Bradbury Drive to End		
<b>Ruppel Place</b> Bradbury Drive to End		



City Council

Mike Anderson, Mayor  
Don Tatzin, Vice Mayor  
Brandt Andersson, Council Member  
Mark Mitchell, Council Member  
Traci Reilly, Council Member

Dear Resident:

\_\_\_\_\_, under contract with the City of Lafayette, will be performing maintenance repairs on your street. This work will be done in one to four distinct phases, depending on the design treatment for your street. Please see work schedule on the back of this notice indicating what work is scheduled for your street. Please note that not all streets will receive all four of the pavement preservation treatments (please see the schedule on the back of this page for additional information regarding the work scheduled for your street). The hours of construction will be from 8:00 AM to 5:00 PM, Monday through Friday. Work will begin with patch paving and crack sealing to address localized areas of pavement defects. On some streets a chip seal will then follow to place a mat of rubberized liquid asphalt and rock chips to blanket the entire road surface. Lastly some streets will receive the slurry seal application. Please note that the slurry seal can take up to 4 or 5 hours to dry sufficiently to allow cars to drive on it.

In order to provide the City and its residents with a better looking and longer lasting road, as well as provide the workers with a safe work environment, we ask that traffic closures be observed. During the pavement repair and crack seal phases of work the streets will be open to traffic, however, on street parking will not be permitted. During the chip seal process the roads will be closed to traffic for approximately 2 hours. During the slurry seal process the streets, except School Street and Toper Lane, will be closed to traffic for a period of up to 5 hours. Access to properties will be restricted during this time as non-emergency vehicles will not be permitted to drive across or on the wet slurry. The City will make arrangements for access by emergency vehicles. In the few days immediately following the chip seal, signs will be posted to advise motorists to reduce speed to avoid kicking up the loose rock chips that would be expected on the roadway. **Please note that if you live off a street that will receive a chip or slurry seal treatment your access will also be restricted.**

Barricades and traffic cones will be placed to prevent vehicles from entering the wet areas. Please do not go around the traffic control devices; chip and slurry seal are tar-like substances that can splash onto the sides of vehicles as well as track onto other surfaces such as driveways and sidewalks if driven through or walked upon while wet. If you do have oil on something, simple dish soap and water will clean the area if caught before the oil has had time to dry. Otherwise we recommend a citrus solvent-type cleaner.

Notification and no parking signs will be placed on the road a minimum of 3 days prior to the start of each phase of work. These signs will provide the roadwork dates when parking on the street will not be allowed. It is very important that our contractor's crews have access to the entire street. Please note that vehicles parked on the street blocking construction activities will be towed at the owners' expense. In order to sweep excess loose rocks after placement, we request that you park off the chip-sealed streets for two days following the placement of the chip seal.

**In the event the contractor is unable to perform chip or slurry seal work on your street on the scheduled day project information signs at the entrance to your street will be updated to provide the new date and times for the work.**

If you have any questions regarding these access restrictions, please contact me at (925) 299-3247.

Sincerely,  
Matt Luttrupp, Associate Engineer City of Lafayette



<b>Street</b>	<b>Pavement Repairs</b>	<b>Crack Seal</b>	<b>Chip Seal</b>	<b>Slurry Seal</b>
<b>El Nido Ranch Road</b> Linda Vista Lane to City Limits				
<b>Middle Road</b> Crest Road to Crest Road				
<b>Dolores Drive</b> Via Roble to End				
<b>Happy Valley Court</b> Happy Valley to End				
<b>Brown Avenue</b> Deer Hill Road to 1048 Brown Avenue				
<b>Second Street</b> Moraga Boulevard to Mt Diablo Boulevard				
<b>School Street</b> Moraga Road to Topper Lane				
<b>Topper Lane</b> School Street to Saint Mary's Road				
<b>Hamlin Road</b> Moraga Road to Solana Drive				
<b>Las Trampas Road</b> Reliez Station Road to Schelling Avenue				
<b>Richelle Court</b> Reliez Station Road to End				
<b>Old Tunnel Road</b> Linda Vista Lane to City Limits				
<b>Camino Diablo (Freeway Crossing)</b> Camino Diablo to Old Tunnel Road				
<b>Los Palos Drive</b> Los Palos Circle to Glenside Drive				
<b>Sommerset Place</b> Huntleigh Drive to End				

**APPENDIX F**

**PROJECT NOTIFICATION SIGNS**



**CITY OF LAFAYETTE STREET  
MAINTENANCE PROJECT**

**PAVEMENT REPAIR**

**EXPECT TRAFFIC DELAYS**

**DATE: TUES, JUNE 11**

**HOURS: 8:00 AM – 5:00 PM**

**CONTRACTOR: XXXXXXXXXXXXXXXXXXXXXXXXXXXX**

Note:

1. Notification signs shall be printed with a yellow background.
2. Signs shall be a minimum of 3 feet wide by 3 feet tall.



**CITY OF LAFAYETTE STREET  
MAINTENANCE PROJECT**

**CHIP SEAL**

**ROAD CLOSURE**

**DATE: TUES, JUNE 11**

**HOURS: 8:00 AM – 5:00 PM**

**CONTRACTOR: XXXXXXXXXXXXXXXXXXXXXXXXXXXX**

Note:

1. Notification signs shall be printed with a yellow background.
2. Signs shall be a minimum of 3 feet wide by 3 feet tall.



**CITY OF LAFAYETTE STREET  
MAINTENANCE PROJECT**

**SLURRY SEAL  
ROAD CLOSURE**

**DATE: TUES, JUNE 11**

**HOURS: 8:00 AM – 5:00 PM**

**CONTRACTOR: XXXXXXXXXXXXXXXXXXXXXXXXXXXX**

Note:

1. Notification signs shall be printed with a yellow background.
2. Signs shall be a minimum of 3 feet wide by 3 feet tall.



# UPDATE

## CITY OF LAFAYETTE STREET MAINTENANCE PROJECT

### CHIP SEAL

### ROAD CLOSURE

DATE: TUES, JUNE 11

HOURS: 8:00 AM – 5:00 PM

CONTRACTOR: XXXXXXXXXXXXXXXXXXXXXXXXXXXXX

Note:

1. Re-notification signs shall be printed with a orange background.
2. Signs shall be a minimum of 3 feet wide by 3 feet tall.