







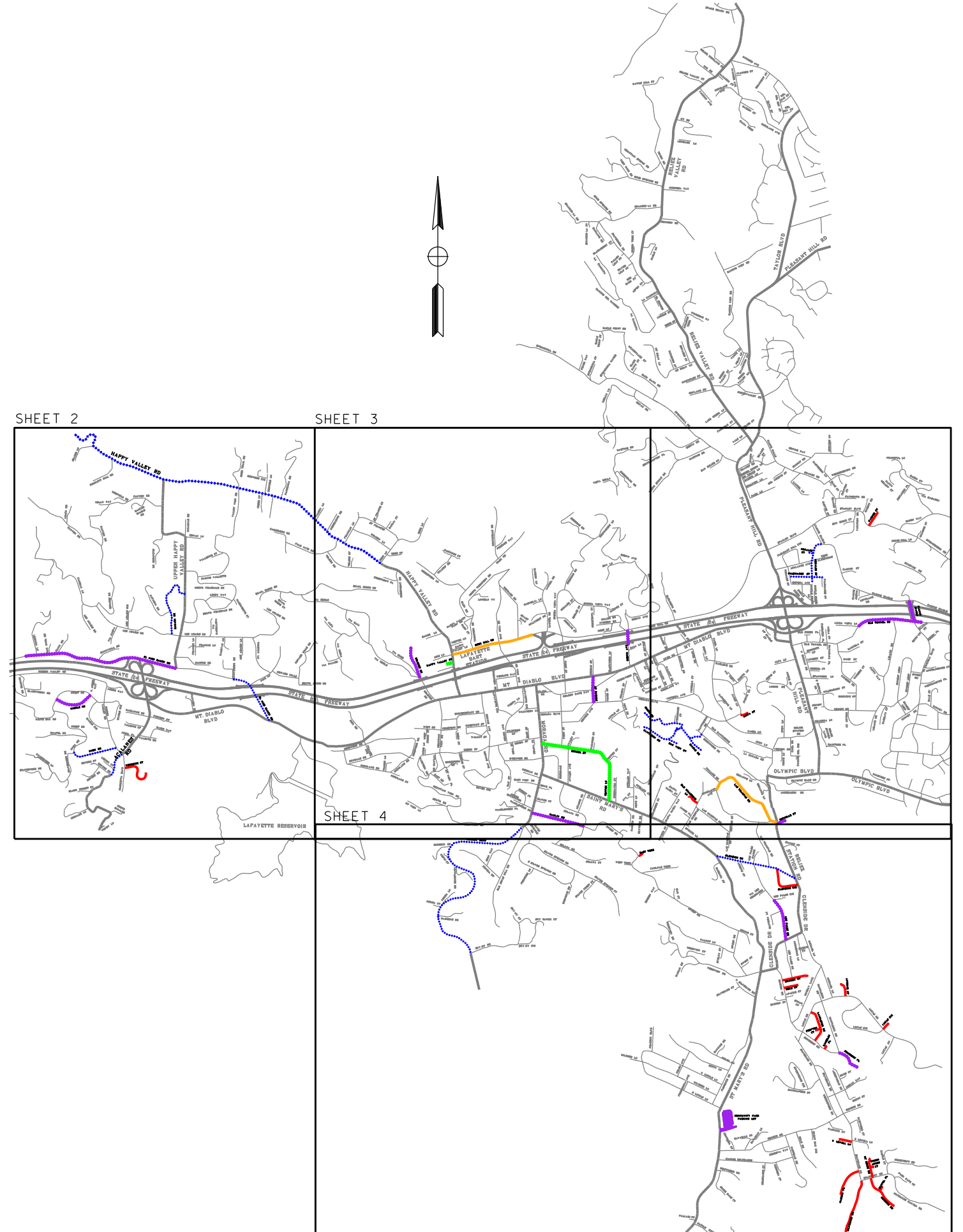
GENERAL NOTES:

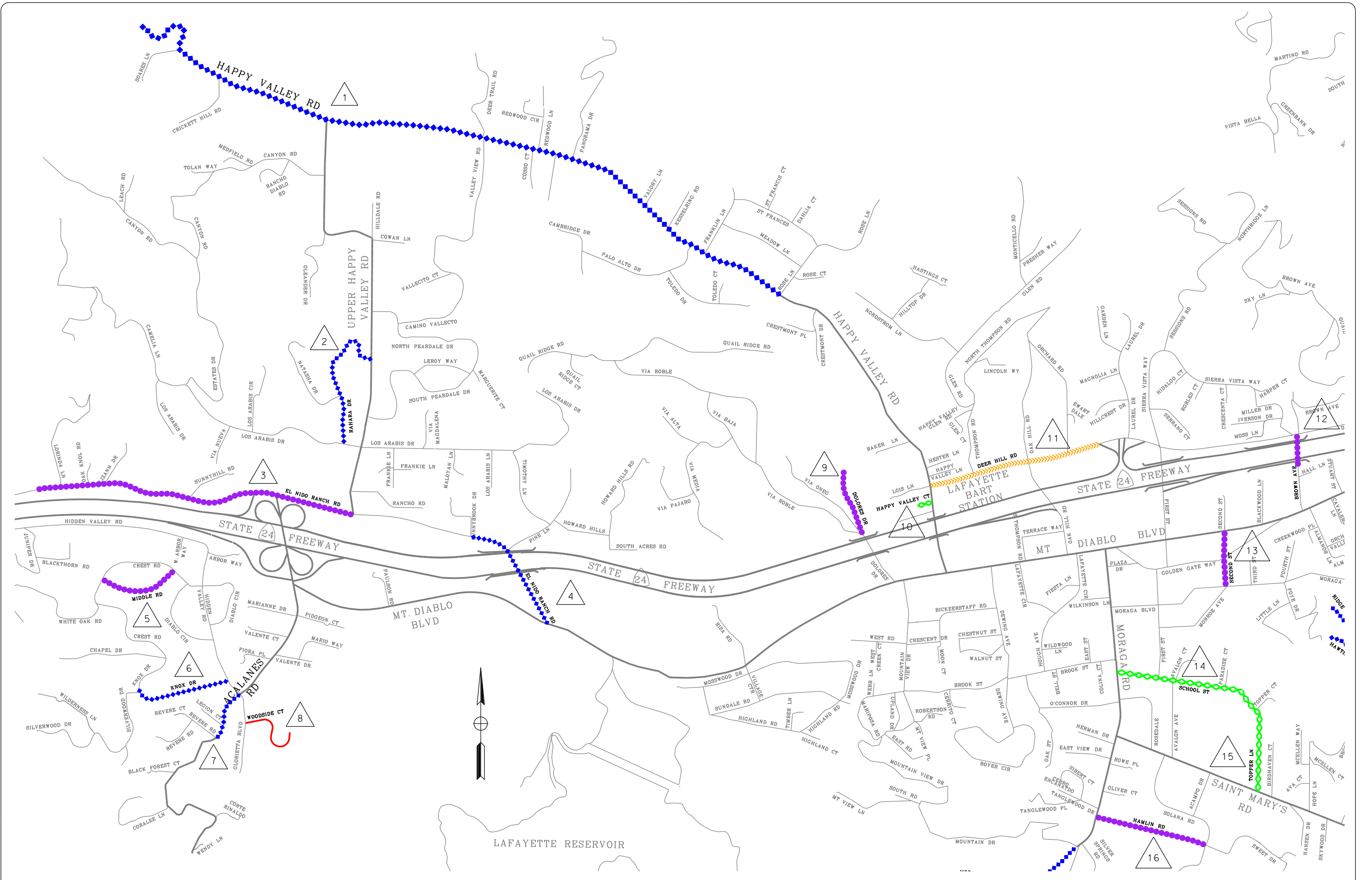
1. THE CONTRACTOR SHALL NOTIFY THE APPROPRIATE AGENCIES PRIOR TO THE START OF ANY WORK WHICH MAY AFFECT THEIR FACILITIES. THE FOLLOWING UTILITIES AND AGENCIES ARE KNOWN TO HAVE FACILITIES WITHIN THE PROJECT LIMITS:

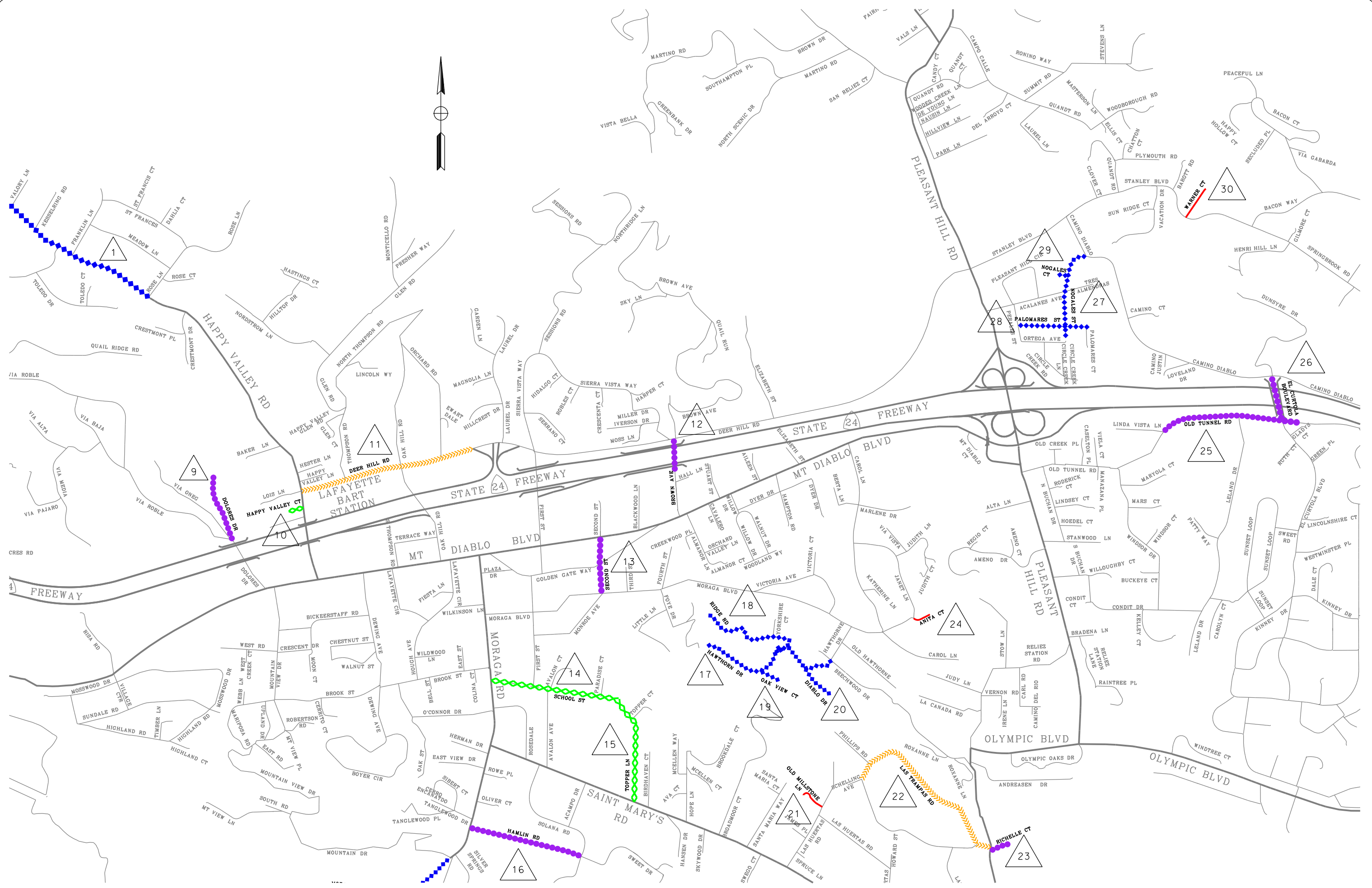
CENTRAL CONTRA COSTA SANITARY DISTRICT	(925)228-9500
EAST BAY MUNICIPAL UTILITY DISTRICT (WATER)	(510)287-0834
SBC (TELEPHONE)	(925)542-9000
PACIFIC GAS AND ELECTRIC (GAS)	(510)784-3211
PACIFIC GAS AND ELECTRIC (ELECTRIC)	(510)784-3236
CONSOLIDATE FIRE PROTECTION DISTRICT	(925)930-5531
COMCAST (CABLE TELEVISION)	(925)349-3300
SPRINT	(650)513-2545
2. THE CONTRACTOR SHALL INSPECT THE PROJECT SITE PRIOR TO SUBMITTING A BID IN ORDER TO OBSERVE AND DETERMINE THE EXISTING SITE CONDITIONS.
3. TRAFFIC CONTROL DURING CONSTRUCTION SHALL BE THE CONTRACTOR'S RESPONSIBILITY. ALL TRAFFIC CONTROL AND DEVICES SHALL BE IN ACCORDANCE WITH THE LATEST EDITION OF THE "MANUAL OF TRAFFIC CONTROLS FOR CONSTRUCTION AND MAINTANCE WORK ZONES" USED BY THE STATE OF CALIFORNIA, DEPARTMENT OF TRANSPORTATION.
4. THE CONTRACTOR SHALL ASSUME SOLE AND COMPLETE RESPONSIBILITY FOR JOB SITE CONDITIONS DURING THE COURSE OF CONSTRUCTION OF THE PROJECT. THESE PLANS DO NOT INCLUDE COMPONENTS NECESSARY FOR CONSTRUCTION SAFETY. IT IS THE CONTRACTOR'S RESPONSIBILITY TO PROVIDE FOR THE SAFETY OF ALL PERSONS AND PROPERTY DURING THE COURSE OF THE PROJECT.
5. THE CONTRACTOR SHALL COMPLY WITH THE RULES AND REGULATIONS OF CAL/OSHA. THIS REQUIREMENT SHALL BE MADE TO APPLY CONTINUOUSLY AND NOT BE LIMITED TO NORMAL WORKING HOURS.
6. THE CONTRACTOR SHALL BE SOLELY RESPONSIBLE FOR ANY DAMAGES TO THE SITE OR THE SURROUNDING AREA AS A RESULT OF THE CONTRACTOR'S WORK OR OPERATIONS. EXISTING CURB, GUTTER AND OTHER IMPROVEMENTS THAT ARE DAMAGED OR DISPLACED BY THE CONTRACTOR SHALL BE REPLACED AT THE CONTRACTOR'S SOLE EXPENSE.
7. THE CONTRACTOR SHALL LOCATE, REFERENCE, AND SET SUFFICIENT MARKS FOR ALL CITY OWNED AND NON-CITY OWNED EXISTING MANHOLE COVERS, VALVE COVERS, SURVEY MONUMENTS, IRON PIPES, RAILROAD SPIKES, PRIOR TO STARTING ANY WORK IN THE PAVING AREA WITHIN THE PROJECT LIMITS.
8. THE LOCATION OF SIDEWALK AND CURB AND GUTTER REMOVAL AND CONSTRUCTION SHALL BE MARKED IN THE FIELD BY THE ENGINEER PRIOR TO THE START OF WORK.
9. PAVEMENT REPAIR AREAS SHALL BE MARKED IN THE FIELD BY THE ENGINEER PRIOR TO THE START OF REPAIR.

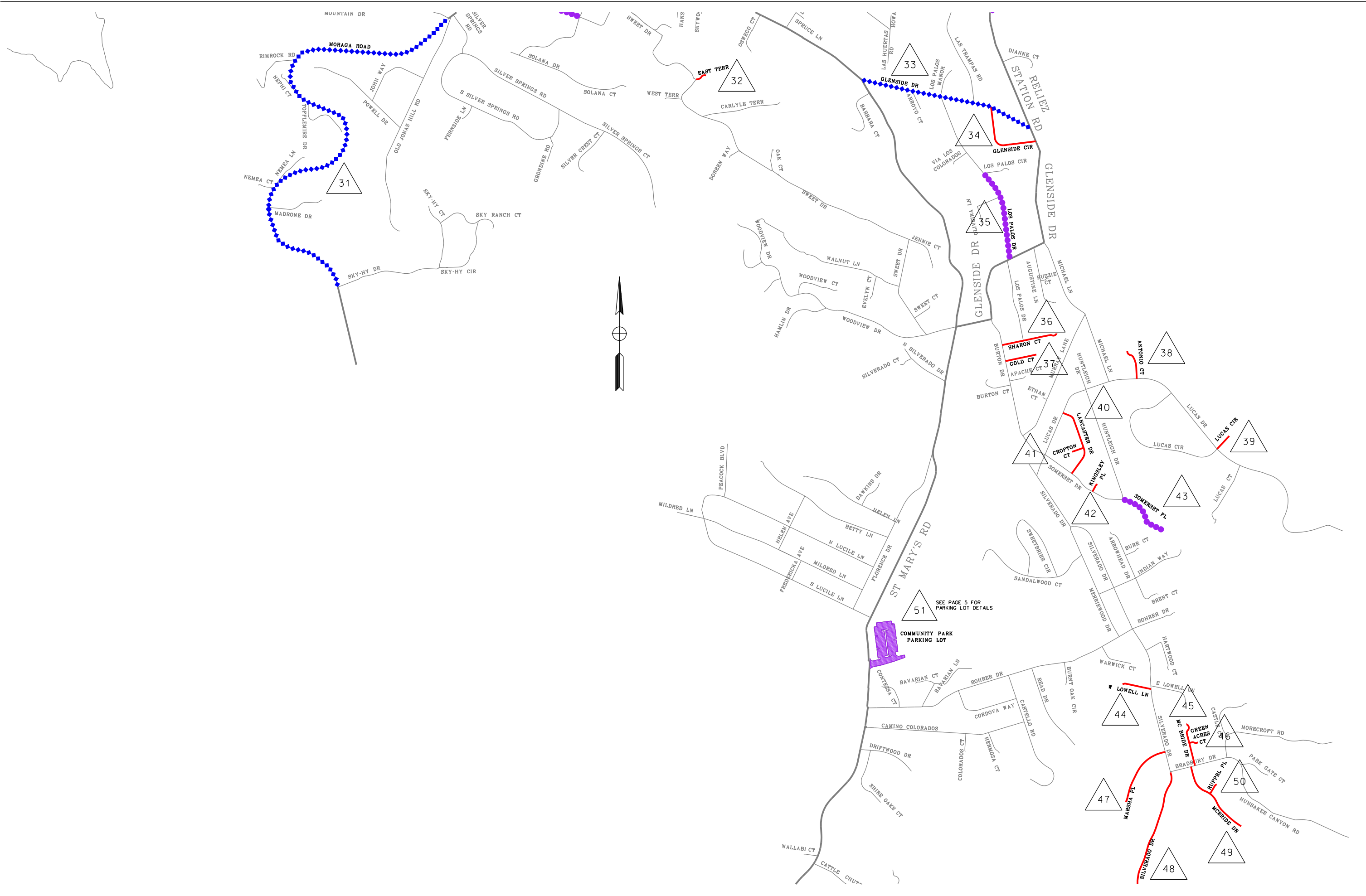
LEGEND:

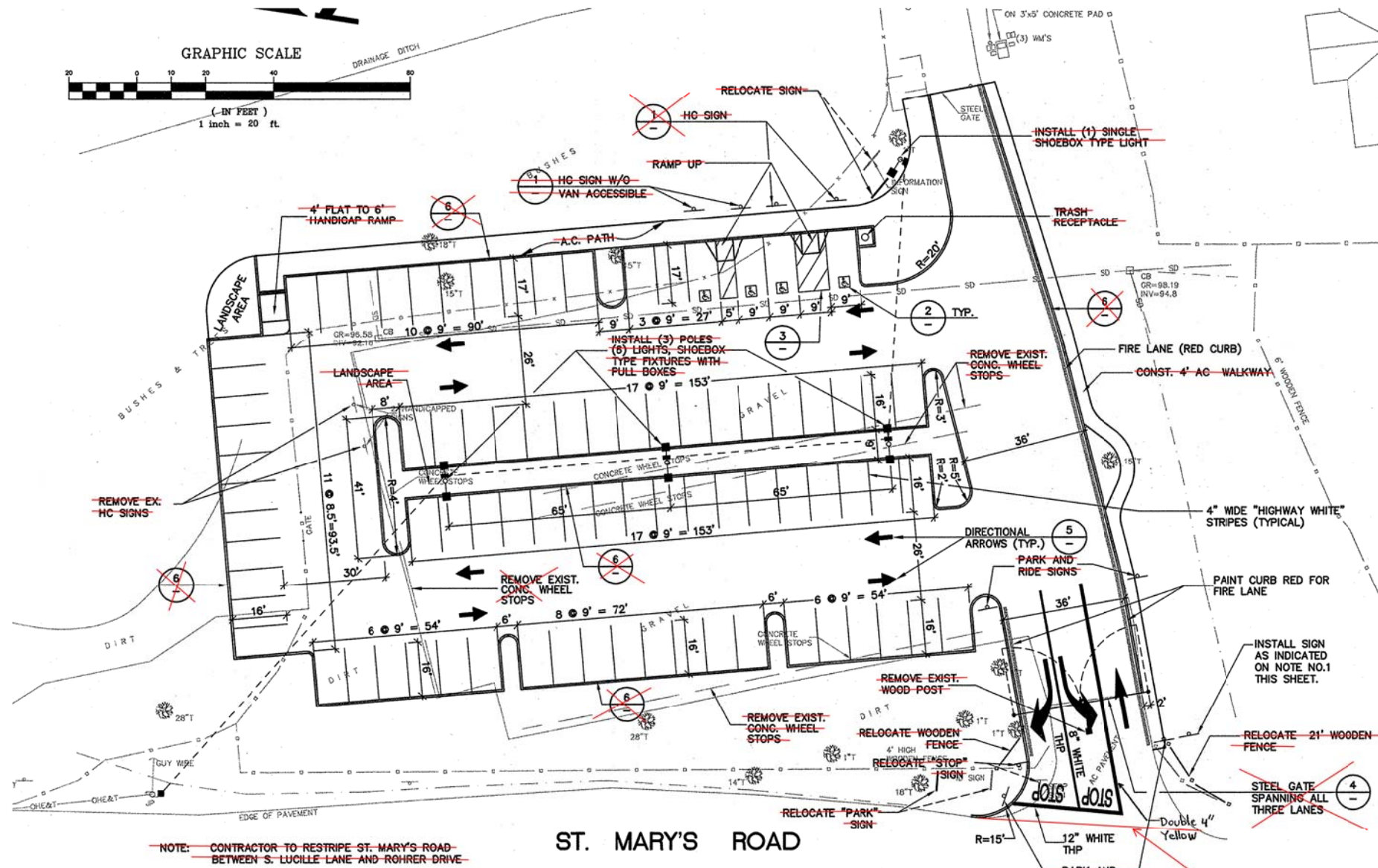
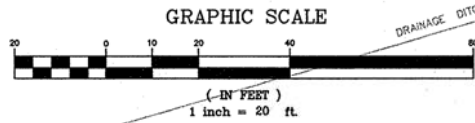
DESCRIPTION	
PAVEMENT REPAIR AND CAPE SEAL	
PAVEMENT REPAIR AND SLURRY SEAL	
PAVEMENT REPAIR AND CRACK SEAL	
CHIP SEAL ONLY	
CRACK SEAL ONLY	
LOCATION NUMBER	





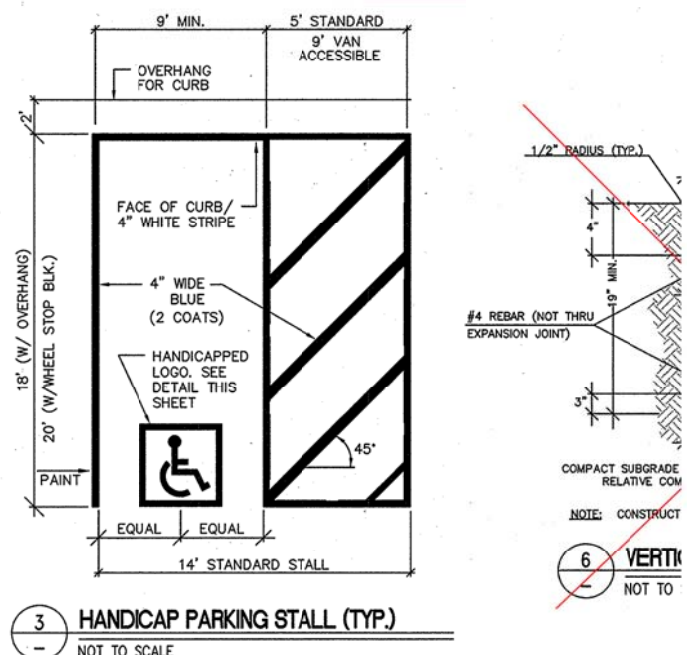
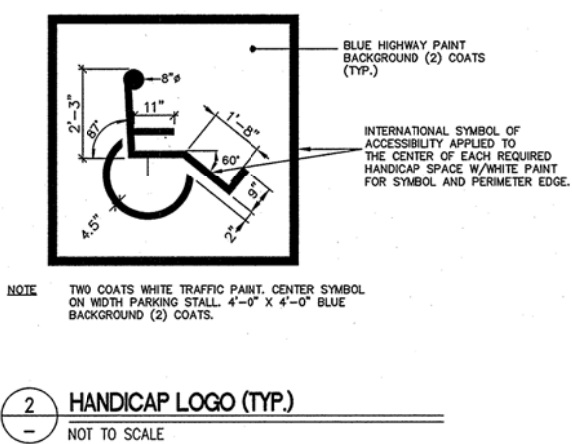
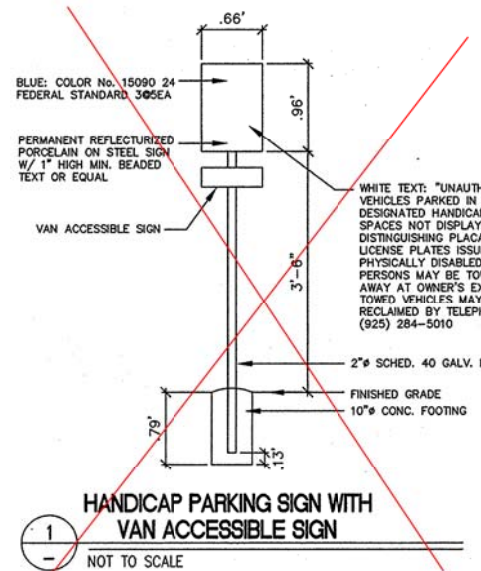






NOTE: CONTRACTOR TO RESTRIPE ST. MARY'S ROAD BETWEEN S. LUCILLE LANE AND ROHRER DRIVE

ST. MARY'S ROAD



BASE BID LOCATION	DESCRIPTION	PAVEMENT MARKERS AND MARKINGS																													
		0.5" PAVEMENT REPAIR	SKIN PATCH	CHIP SEAL	SLURRY SEAL	CRACK SEAL	REMOVE AND REPLACE CONCRETE CURB AND GUTTER	REMOVE AND REPLACE CONCRETE SIDEWALK OR DRIVEWAY	TRAFFIC SIGNAL LOOP	REMOVE MARKERS, THERMOPLASTIC STRIPING AND MARKINGS	DISABLED PARKING SPACE LEGEND	TYPE I ARROW (10')	TYPE I ARROW (18')	TYPE III ARROW	TYPE IV ARROW	"STOP" LEGEND	"STOP AHEAD" LEGEND	"SLOW SCHOOL XING" LEGEND	"KEEP CLEAR" LEGEND	"NO PARKING" LEGEND	4" THERMOPLASTIC STRIPE (WHITE)	4" THERMOPLASTIC STRIPE (YELLOW)	12" THERMOPLASTIC STRIPE (WHITE)	12" THERMOPLASTIC STRIPE (YELLOW)	DETAIL 4	DETAIL 23	DETAIL 27B	DETAIL 38	INSTALL "BLUE" TWO WAY PAVEMENT MARKERS	PAINT CURB OR BERM RED	
		SF	SF	SY	SY	Y/N	LF	SF	EA	Y/N	EA	EA	EA	EA	EA	EA	EA	EA	EA	EA	EA	EA	EA	EA	EA	EA	EA	EA	EA	EA	EA
1	HAPPY VALLEY ROAD CITY LIMITS TO ROSE LANE	-	-	-	-	Y	-	-	-	N	-	-	-	-	-	-	-	-	-	-	-	-	-	-	-	-	-	-	-	-	-
2	RAHARA DRIVE LOS ARABIS DRIVE TO UPPER HAPPY VALLEY ROAD	-	-	-	-	Y	-	-	-	N	-	-	-	-	-	-	-	-	-	-	-	-	-	-	-	-	-	-	-	-	-
3	EL NIDO RANCH ROAD UPPER HAPPY VALLEY ROAD TO CITY LIMITS	1,252	-	-	16,500	Y	26	-	-	Y	-	-	-	-	-	-	3	1	-	-	-	-	-	43	-	-	3,840	-	-	-	-
4	EL NIDO RANCH ROAD SUNNYBROOK DRIVE TO MOUNT DIABLO BOULEVARD	-	-	-	-	Y	-	-	-	N	-	-	-	-	-	-	-	-	-	-	-	-	-	-	-	-	-	-	-	-	
5	MIDDLE ROAD CREST ROAD TO CREST ROAD	650	-	-	2,350	Y	-	-	-	Y	-	-	-	-	-	-	-	-	-	-	-	-	-	-	-	75	220	-	-	1	
6	KNOX DRIVE HIDDEN VALLEY ROAD TO SILVERWOOD DRIVE	-	-	-	-	Y	-	-	-	N	-	-	-	-	-	-	-	-	-	-	-	-	-	-	-	-	-	-	-	-	
7	ACALANES ROAD HIDDEN VALLEY ROAD TO REVERE ROAD	-	-	-	-	Y	-	-	-	N	-	-	-	-	-	-	-	-	-	-	-	-	-	-	-	-	-	-	-	-	
8	WOODSIDE COURT GLORIETTA BOULEVARD TO END	84	1,611	3,540	-	N	-	-	-	N	-	-	-	-	-	-	-	-	-	-	-	-	-	-	-	-	-	-	-	-	
9	DOLORES DRIVE VIA ROBLE TO END	845	-	-	2,530	Y	-	-	-	Y	-	-	-	-	-	-	1	-	-	-	-	-	20	-	-	25	-	-	-	95	
10	HAPPY VALLEY COURT HAPPY VALLEY ROAD TO END	-	-	950	950	N	-	-	-	N	-	-	-	-	-	-	-	-	-	-	-	-	-	-	-	-	-	-	-	-	
11	DEER HILL ROAD HAPPY VALLEY ROAD TO FIRST STREET	883	5	-	-	Y	-	-	-	N	-	-	-	-	-	-	-	-	-	-	-	-	-	-	-	-	-	-	-	-	
12	BROWN AVENUE DEER HILL ROAD TO A POINT 260' SOUTH	710	-	-	1,040	Y	-	-	-	Y	-	-	-	-	-	2	-	-	-	-	-	-	151	-	220	46	-	-	-	-	
13	SECOND STREET MORAGA BOULEVARD TO MOUNT DIABLO BOULEVARD	880	-	-	1,940	Y	-	-	-	Y	-	-	-	-	-	3	-	-	-	-	-	-	204	-	-	182	-	-	1	75	
14	SCHOOL STREET MORAGA ROAD TO TOPPER LANE	712	-	6,440	6,440	N	40	235	6	Y	-	-	-	-	4	-	-	4	2	-	-	570	80	635	-	1,375	-	50	2	-	
15	TOPPER LANE SCHOOL STREET TO SAINT MARY'S ROAD	1,220	-	2,870	2,870	N	-	-	-	Y	-	-	-	-	-	-	-	-	-	-	-	144	-	-	-	-	-	-	1	-	
16	HAMLIN ROAD MORAGA ROAD TO SOLANA DRIVE	-	-	-	3,650	Y	-	-	-	Y	-	-	-	-	-	2	-	-	-	-	-	-	162	-	-	110	2,070	-	1	-	
17	HAWTHORNE DRIVE BEECHWOOD DRIVE TO END	-	-	-	-	Y	-	-	-	N	-	-	-	-	-	-	-	-	-	-	-	-	-	-	-	-	-	-	-	-	
18	RIDGE ROAD HAWTHORNE DRIVE TO END	-	-	-	-	Y	-	-	-	N	-	-	-	-	-	-	-	-	-	-	-	-	-	-	-	-	-	-	-	-	
19	OAK VIEW COURT HAWTHORNE DRIVE TO END	-	-	-	-	Y	-	-	-	N	-	-	-	-	-	-	-	-	-	-	-	-	-	-	-	-	-	-	-	-	
20	DIABLO DRIVE HAWTHORNE DRIVE TO END	-	-	-	-	Y	-	-	-	N	-	-	-	-	-	-	-	-	-	-	-	-	-	-	-	-	-	-	-	-	
21	OLD MILLSTONE LANE LAS HUERTAS ROAD TO END	-	270	980	-	N	-	-	-	N	-	-	-	-	-	-	-	-	-	-	-	-	-	-	-	-	-	-	-	-	
22	LAS TRAMPAS ROAD RELIEZ STATION ROAD TO SCHELLING AVENUE	2,815	-	-	-	Y	-	-	-	N	-	-	-	-	-	-	-	-	-	-	-	-	-	-	-	-	-	-	-	-	
23	RICHILLE COURT RELIEZ STATION ROAD TO END	125	-	-	1,060	Y	-	-	-	Y	-	-	-	-	-	2	-	-	-	-	-	-	30	-	-	55	-	35	-	-	
24	ANITA COURT JANET LANE TO END	-	52	690	-	N	-	-	-	N	-	-	-	-	-	-	-	-	-	-	-	-	-	-	-	-	-	-	-	-	
25	OLD TUNNEL ROAD LINDA VISTA LANE TO CITY LIMITS	165	-	-	8,910	Y	-	-	-	Y	-	-	-	-	-	3	-	-	-	-	-	-	62	-	160	2,000	510	-	-	-	
26	EL CURTOLA BOULEVARD CAMINO DIABLO TO OLD TUNNEL ROAD	750	1	-	1,515	Y	-	-	-	Y	-	-	-	-	-	2	-	-	-	-	-	-	77	-	-	490	-	-	-	-	
27	NOGALES STREET CAMINO DIABLO TO END	-	-	-	-	Y	-	-	-	N	-	-	-	-	-	-	-	-	-	-	-	-	-	-	-	-	-	-	-	-	
28	PALOMARES STREET PAERALE STREET TO END	-	-	-	-	Y	-	-	-	N	-	-	-	-	-	-	-	-	-	-	-	-	-	-	-	-	-	-	-	-	
29	NOGALES COURT NOGALES STREET TO END	-	-	-	-	Y	-	-	-	N	-	-	-	-	-	-	-	-	-	-	-	-	-	-	-	-	-	-	-	-	

BASE BID LOCATION	DESCRIPTION	PAVEMENT MARKERS AND MARKINGS																													
		0.5" PAVEMENT REPAIR	SKIN PATCH	CHIP SEAL	SLURRY SEAL	CRACK SEAL	REMOVE AND REPLACE CONCRETE CURB AND GUTTER	REMOVE AND REPLACE CONCRETE SIDEWALK OR DRIVEWAY	TRAFFIC SIGNAL LOOP	REMOVE MARKERS, THERMOPLASTIC STRIPING AND MARKINGS	DISABLED PARKING SPACE LEGEND	TYPE I ARROW (10')	TYPE I ARROW (18')	TYPE III ARROW	TYPE IV ARROW	"STOP" LEGEND	"STOP AHEAD" LEGEND	"SLOW SCHOOL XING" LEGEND	"KEEP CLEAR" LEGEND	"NO PARKING" LEGEND	4" THERMOPLASTIC STRIPE (WHITE)	4" THERMOPLASTIC STRIPE (YELLOW)	12" THERMOPLASTIC STRIPE (WHITE)	12" THERMOPLASTIC STRIPE (YELLOW)	DETAIL 4	DETAIL 23	DETAIL 27B	DETAIL 38	INSTALL "BLUE" TWO WAY PAVEMENT MARKERS	PAINT CURB OR BERM RED	
		SF	SF	SY	SY	Y/N	LF	SF	EA	Y/N	EA	EA	EA	EA	EA	EA	EA	EA	EA	EA	EA	LF	LF	LF	LF	LF	LF	LF	LF	EA	LF
30	WARNER COURT STANLEY BOULEVARD TO END	-	436	1,280	-	N	-	-	Y	-	-	-	-	-	-	1	-	-	-	-	-	-	-	-	-	-	-	-	-	-	-
31	MORAGA ROAD SILVER SPRINGS ROAD TO SKY-HY DRIVE	-	-	-	-	Y	-	-	N	-	-	-	-	-	-	-	-	-	-	-	-	-	-	-	-	-	-	-	-	-	
32	EAST TERRACE SWEET DRIVE TO END	-	540	560	-	N	-	-	N	-	-	-	-	-	-	-	-	-	-	-	-	-	-	-	-	-	-	-	-	-	
33	GLENSIDE DRIVE SAINT MARYS ROAD TO RELIEZ STATION ROAD	-	-	-	-	Y	-	-	N	-	-	-	-	-	-	-	-	-	-	-	-	-	-	-	-	-	-	-	-	-	
34	GLENSIDE DRIVE GLENSIDE DRIVE TO GLENSIDE DRIVE	-	935	2,200	-	N	-	-	N	-	-	-	-	-	-	-	-	-	-	-	-	-	-	-	-	-	-	-	-	-	
35	LOS PALOS DRIVE LOS PALOS CIRCLE TO GLENSIDE DRIVE	1,780	-	-	2,635	Y	-	-	Y	-	-	-	-	-	-	1	-	-	-	-	-	-	-	-	-	1,000	30	-	-	1	
36	SHARON COURT BURTON DRIVE TO END	-	580	2,040	-	N	-	-	N	-	-	-	-	-	-	-	-	-	-	-	-	-	-	-	-	-	-	-	-	-	
37	GOLD COURT BURTON DRIVE TO END	-	1,180	1,530	-	N	-	-	N	-	-	-	-	-	-	-	-	-	-	-	-	-	-	-	-	-	-	-	-	-	
38	ANTONIO COURT LUCAS DRIVE TO END	-	170	1,070	-	N	-	-	N	-	-	-	-	-	-	-	-	-	-	-	-	-	-	-	-	-	-	-	-	-	
39	LUCAS CIRCLE LUCAS DRIVE TO END	-	20	445	-	N	-	-	N	-	-	-	-	-	-	-	-	-	-	-	-	-	-	-	-	-	-	-	-	-	
40	LANCASTER DRIVE LUCAS DRIVE TO SOMERSET DRIVE	-	870	2,775	-	N	-	-	N	-	-	-	-	-	-	-	-	-	-	-	-	-	-	-	-	-	-	-	-	-	
41	CROFTON COURT LANCASTER DRIVE TO END	-	390	695	-	N	-	-	N	-	-	-	-	-	-	-	-	-	-	-	-	-	-	-	-	-	-	-	-	-	
42	KINGSLEY PLACE SOMMERSET DRIVE TO END	-	180	560	-	N	-	-	N	-	-	-	-	-	-	-	-	-	-	-	-	-	-	-	-	-	-	-	-	-	
43	SOMMERSET PLACE HUNTLEIGH DRIVE TO END	1,340	-	-	2,730	Y	-	-	N	-	-	-	-	-	-	-	-	-	-	-	-	-	-	-	-	-	-	-	1	-	
44	WEST LOWELL LANE SILVERADO DRIVE TO END	-	-	1,410	-	N	-	-	N	-	-	-	-	-	-	-	-	-	-	-	-	-	-	-	-	-	-	-	-	-	
45	MCBRIDE DRIVE (NORTH END) BRADBURY DRIVE TO END	-	630	1,600	-	N	-	-	Y	-	-	-	-	-	-	1	-	-	-	-	-	-	-	-	-	25	-	-	-	-	
46	GREEN ACRES COURT MCBRIDE DRIVE TO END	-	440	515	-	N	-	-	N	-	-	-	-	-	-	-	-	-	-	-	-	-	-	-	-	-	-	-	-	-	
47	MARSHA PLACE SILVERADO DRIVE TO END	-	350	2,935	-	N	-	-	N	-	-	-	-	-	-	-	-	-	-	-	-	-	-	-	-	-	-	-	-	-	
48	SILVERADO DRIVE BRADBURY DRIVE TO END	-	190	6,150	-	N	-	-	Y	-	-	-	-	-	-	1	-	-	-	-	-	-	-	-	-	50	-	-	-	-	
49	MCBRIDE DRIVE (SOUTH END) BRADBURY DRIVE TO END	-	365	3,370	-	N	-	-	Y	-	-	-	-	-	-	1	-	-	-	-	-	-	20	-	50	-	-	-	-	-	
50	RUPPEL PLACE MCBRIDE DRIVE TO END	-	135	645	-	N	-	-	N	-	-	-	-	-	-	-	-	-	-	-	-	-	-	-	-	-	-	-	-	-	
51	COMMUNITY PARK PARKING LOT 480 SAINT MARYS ROAD	3,420	-	-	3,350	Y	-	-	N	5	8	1	2	-	2	-	-	-	-	3	1,512	-	-	-	-	62	-	62	-	-	
	TOTALS	17,631	9,350	45,250	58,470		66	235	6		5	8	1	2	4	25	1	4	2	3	1,512	570	1,033	635	1,380	8,415	2,800	147	8	170	